



# SNYDERVILLE BASIN CEMETERY DISTRICT

Summit County, Utah

March 18, 2026

Joint Public Hearing

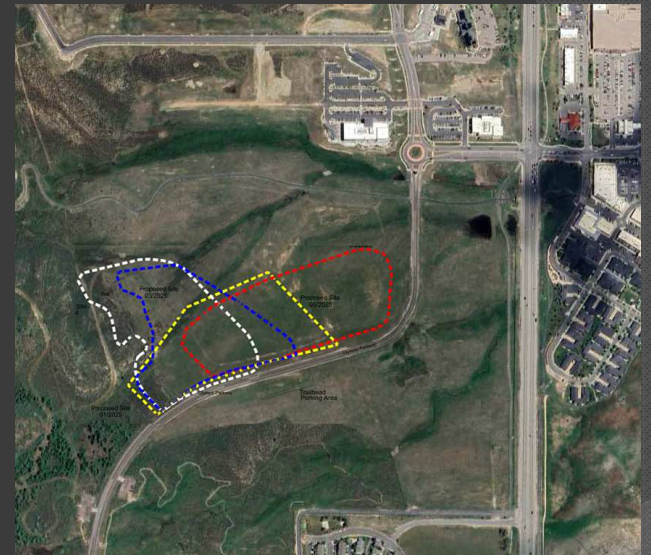
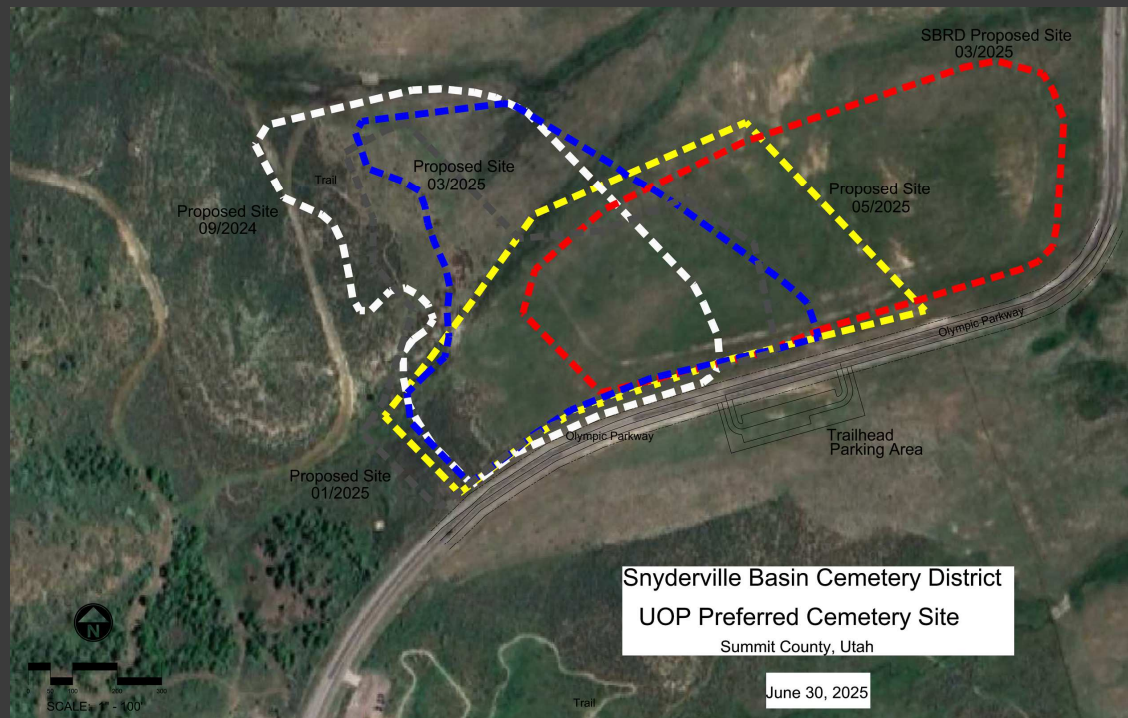
# Preferred Site Criteria

- ❑ 1.) Owned by Summit County
- ❑ 2.) +/- 10 Acres in Size
- ❑ 3.) Easy Access
- ❑ 4.) Adjacent to Trail System
- ❑ 5.) Close to Public Transit
- ❑ 6.) Offsite Views
- ❑ 7.) Utilities in Close Proximity

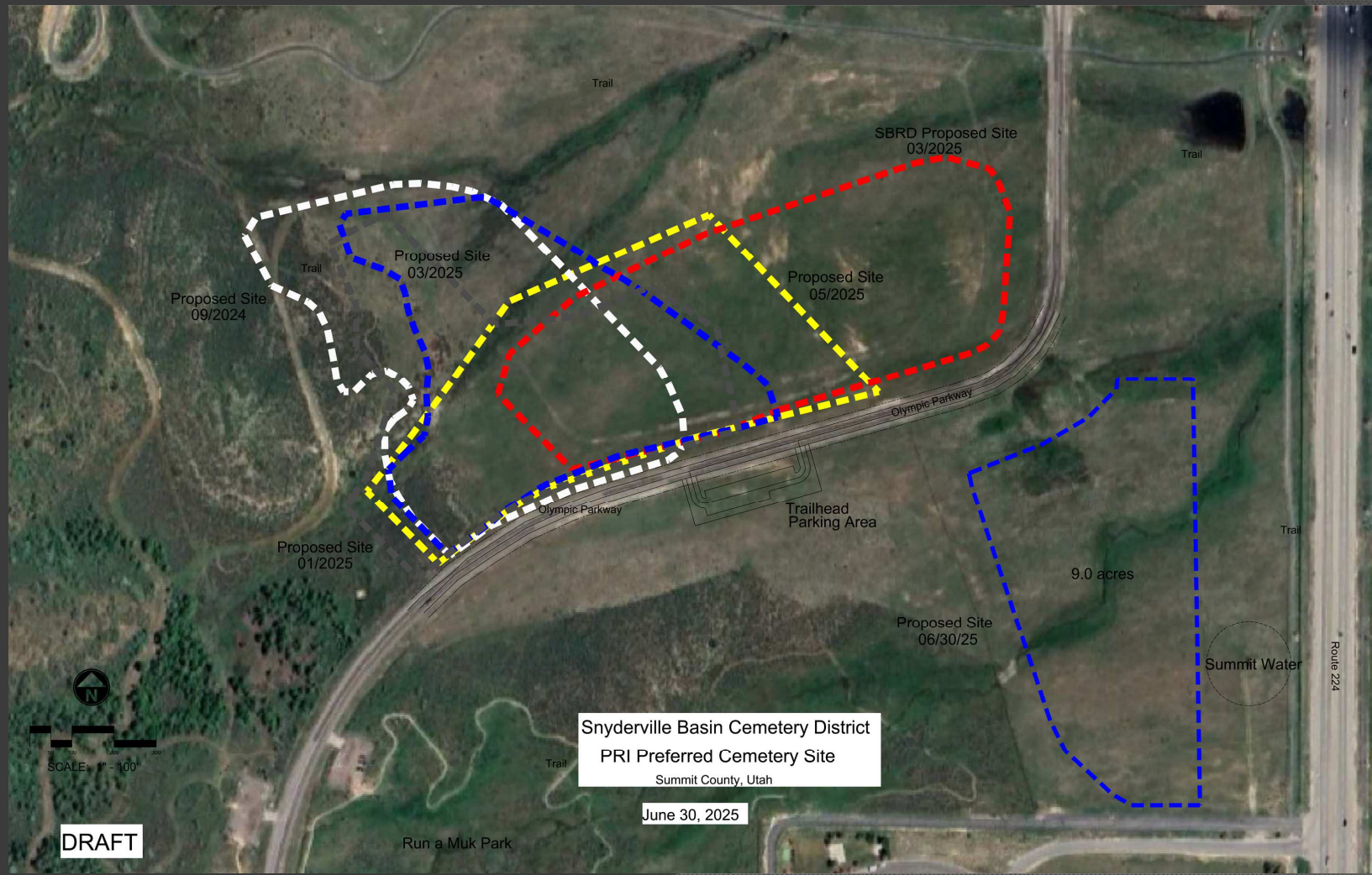
# Evaluation Process

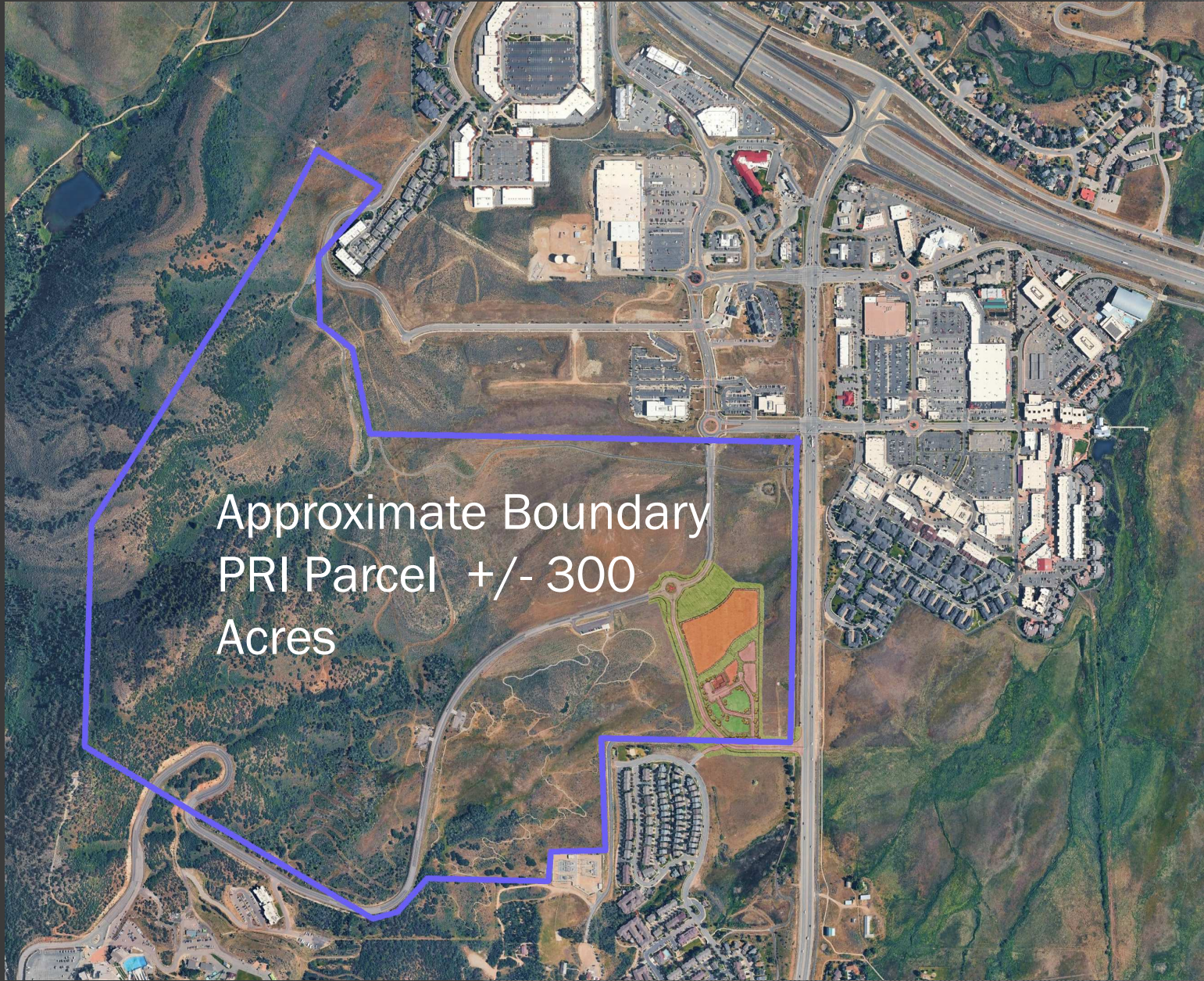
- ▣ 1.) Identify Parcels
- ▣ 2.) Determine Compatibility with Site Criteria
- ▣ 3.) Conduct Site Visit to Assess Factors such as:
  - ▣ A.) Highway Noise
  - ▣ B.) Soil Conditions
  - ▣ C.) Existing Trail Connections
  - ▣ D.) Adjacent Neighborhoods
  - ▣ E.) Adjacency to Open Space Parcels
  - ▣ F.) Vegetation
  - ▣ G.) Offsite Views
- ▣ 4.) Finalize Site Data and Present Findings to SBCD for Review and Outline Future Steps

# Considered Sites: PRI Parcel



# Alternate Site: PRI Parcel





Approximate Boundary  
PRI Parcel +/- 300  
Acres

# Neighboring Properties



# Current Site Consideration:

## Bear Cub Run

- Parcel Size 9.5 Acres
- County Owned w Basin Rec
- Access to Millenium Trail
- Soil Test Results Positive
- Open Space Buffer to RT 224
- Adjacent to Run Amok
- Utilities Located on Rt 224



# Amended Concept Plan

SBCD Contracted for Site Topography and Aerial Image

SBCD Examined 10 Test Pits for Soil Conditions

SBCD Met with County Staff, Summit Water, Utah Olympic Park and Basin Rec

