

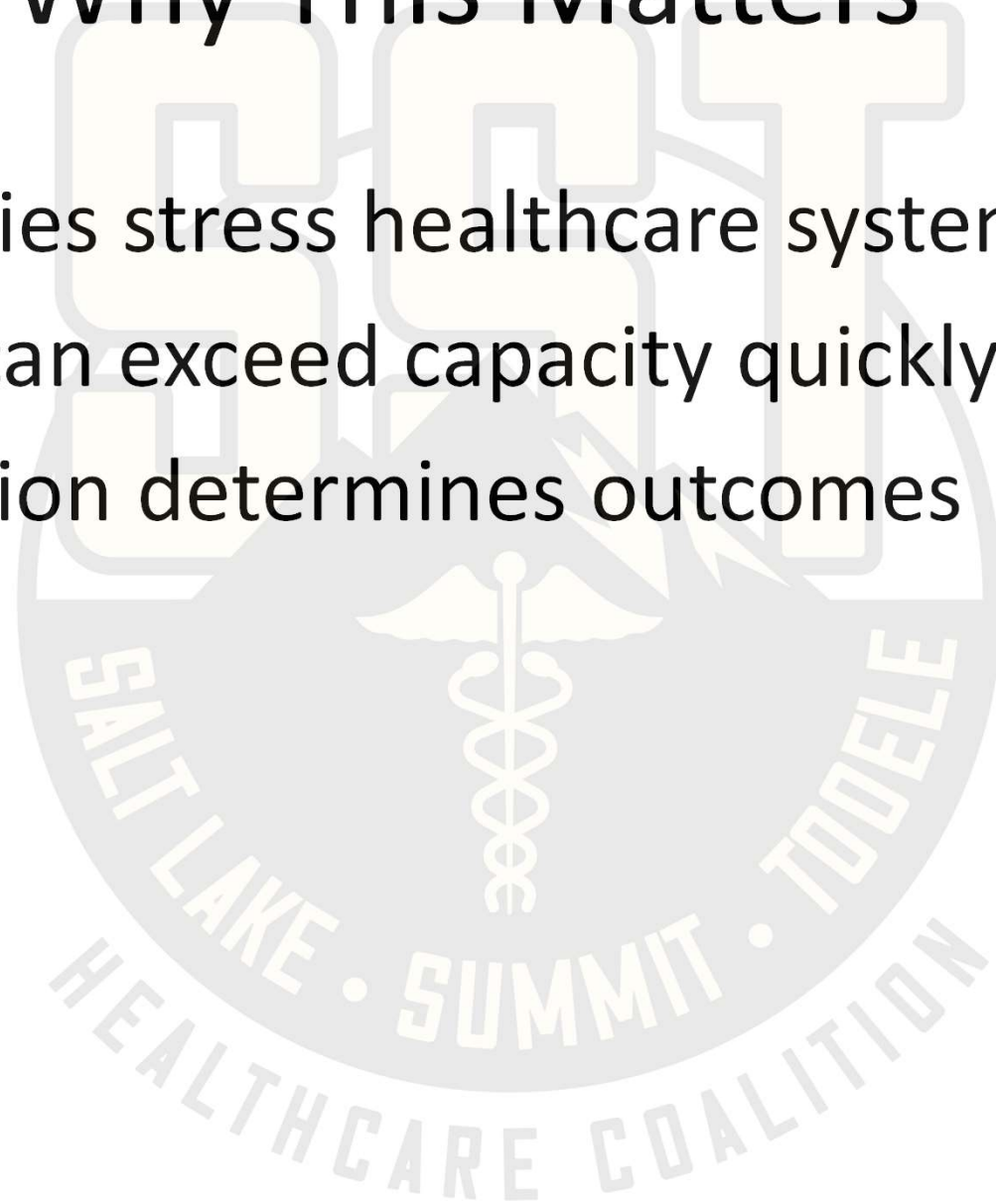
# SST Healthcare Coalition

*Supporting Community Health & Health Care  
System Readiness in  
Salt Lake, Summit and Tooele Counties*

Michelle McGaughey, SLCoHD Emergency Preparedness Bureau Manager  
Captain Tom Simons, MA, CEM, Salt Lake City Emergency Management

# Why This Matters

- Emergencies stress healthcare systems
- Demand can exceed capacity quickly
- Coordination determines outcomes



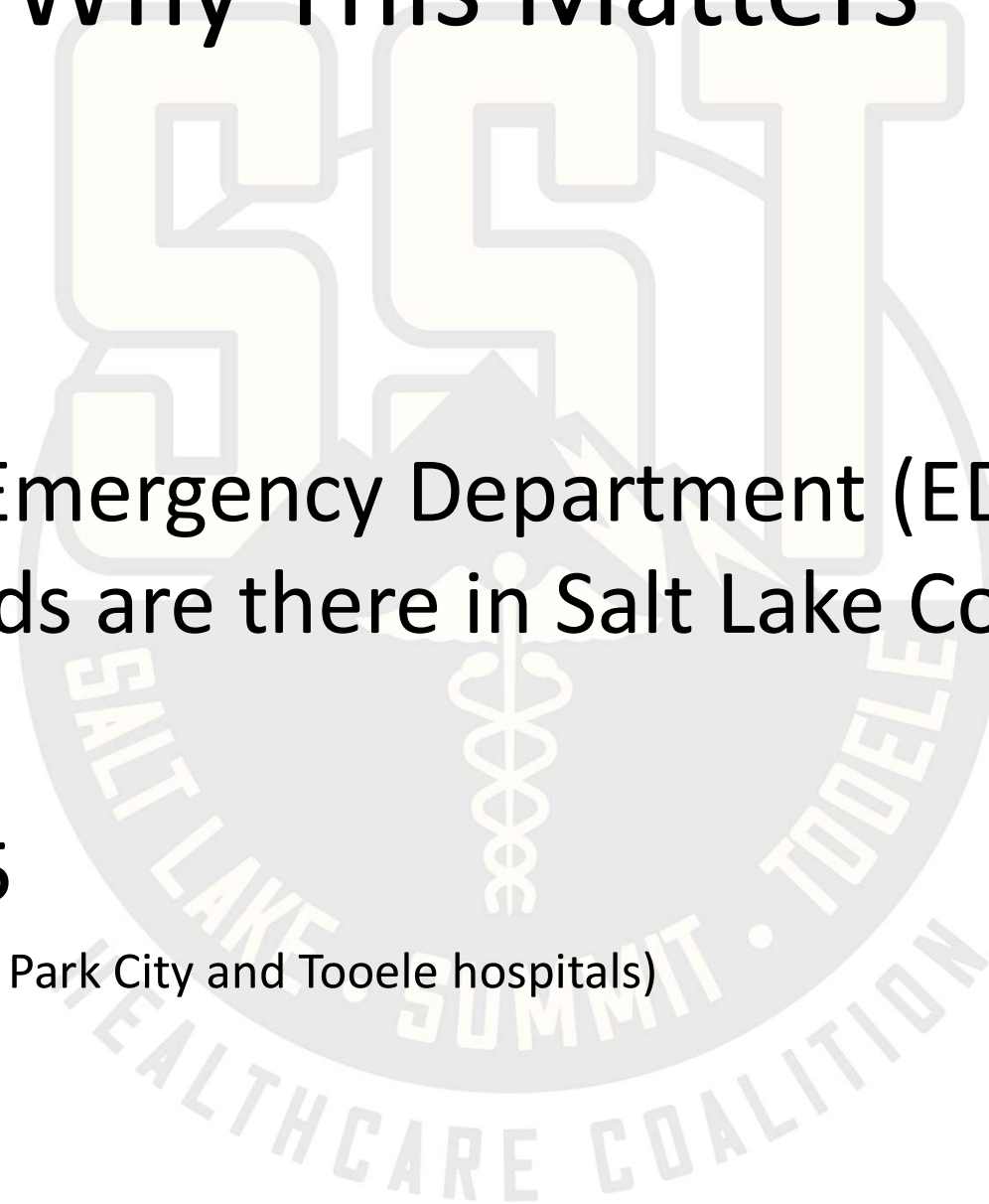
# Why This Matters

Quick Quiz:

How many Emergency Department (ED)  
Licensed Beds are there in Salt Lake County?

**Answer: 285**

(310 if you add in the Park City and Tooele hospitals)



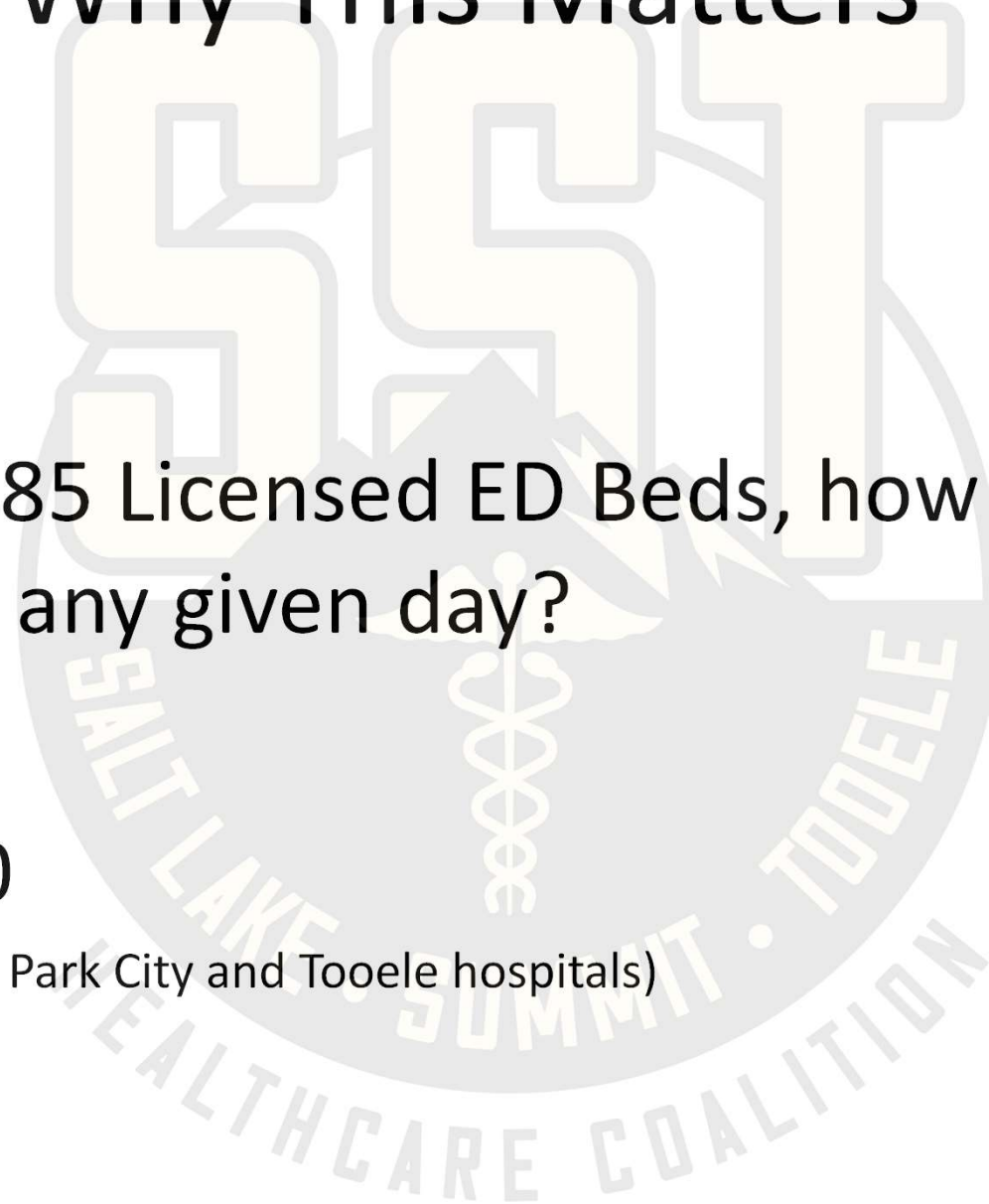
# Why This Matters

Quick Quiz:

Out of the 285 Licensed ED Beds, how many are available on any given day?

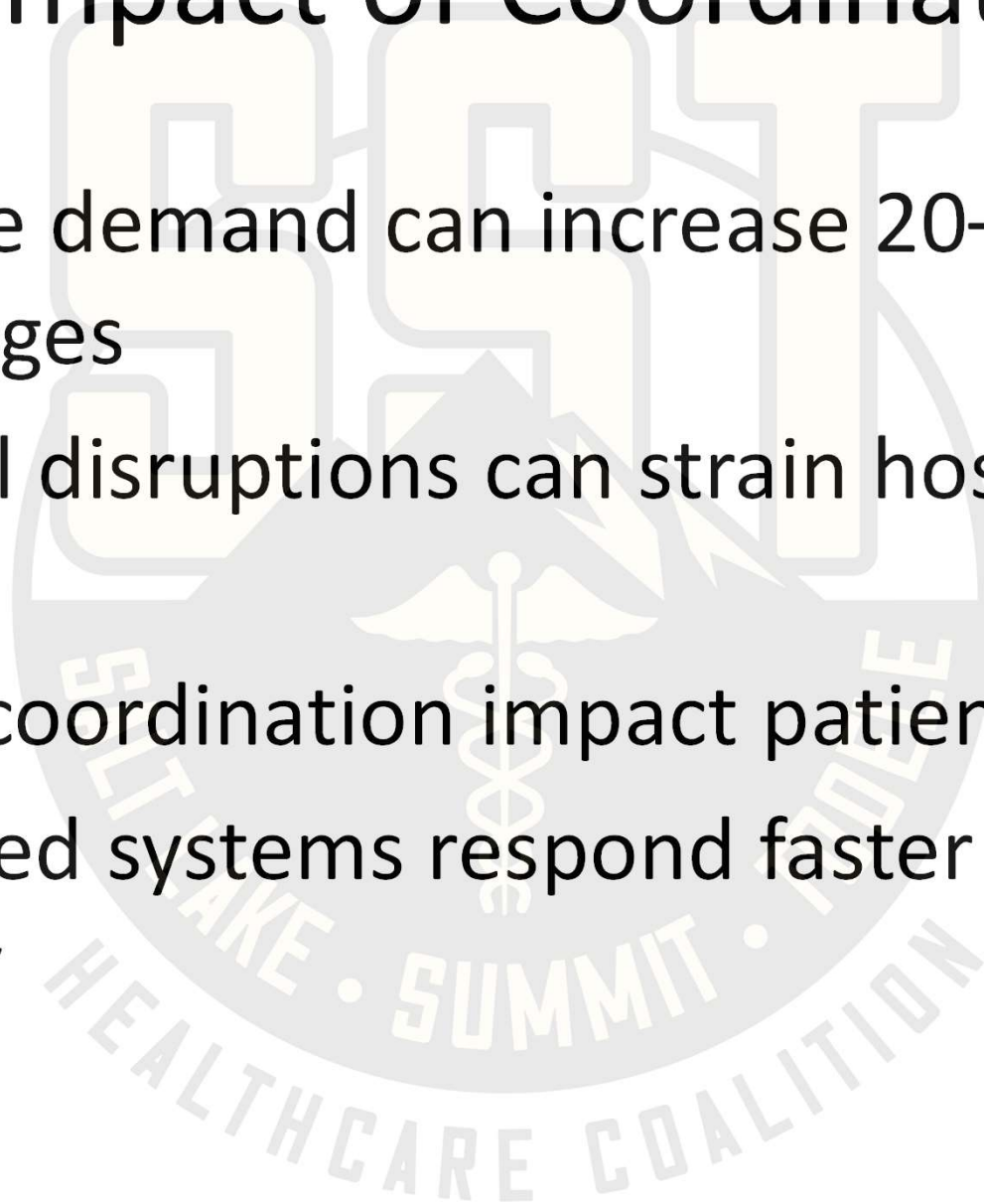
**Answer: 100**

(109 if you add in the Park City and Tooele hospitals)



# The Impact of Coordination

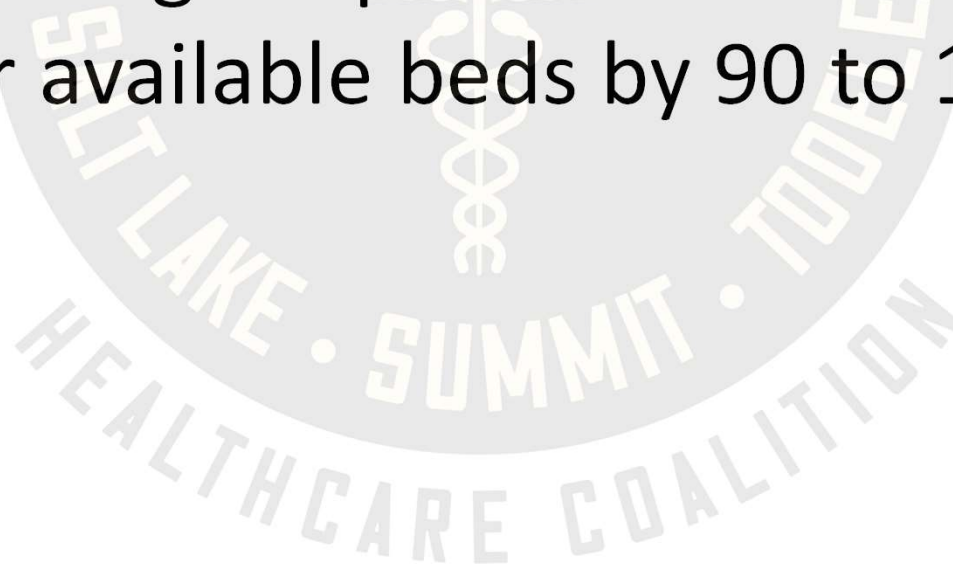
- Healthcare demand can increase 20–30% during surges
- Even small disruptions can strain hospital capacity
- Delays in coordination impact patient care
- Coordinated systems respond faster and more effectively



# In a Disaster

## 7.0 Earthquake

- Injured: 7,400 – 9,000 with life threatening injuries needing hospital care
- Injuries needing hospital treatment could outnumber available beds by 90 to 1.



# What is the Healthcare Coalition

- Regional coordination network including Salt Lake, Summit and Tooele County (SST Coalition)
- Healthcare + Public Health + EMS + EM
- Built for preparedness & response



# Program Basics

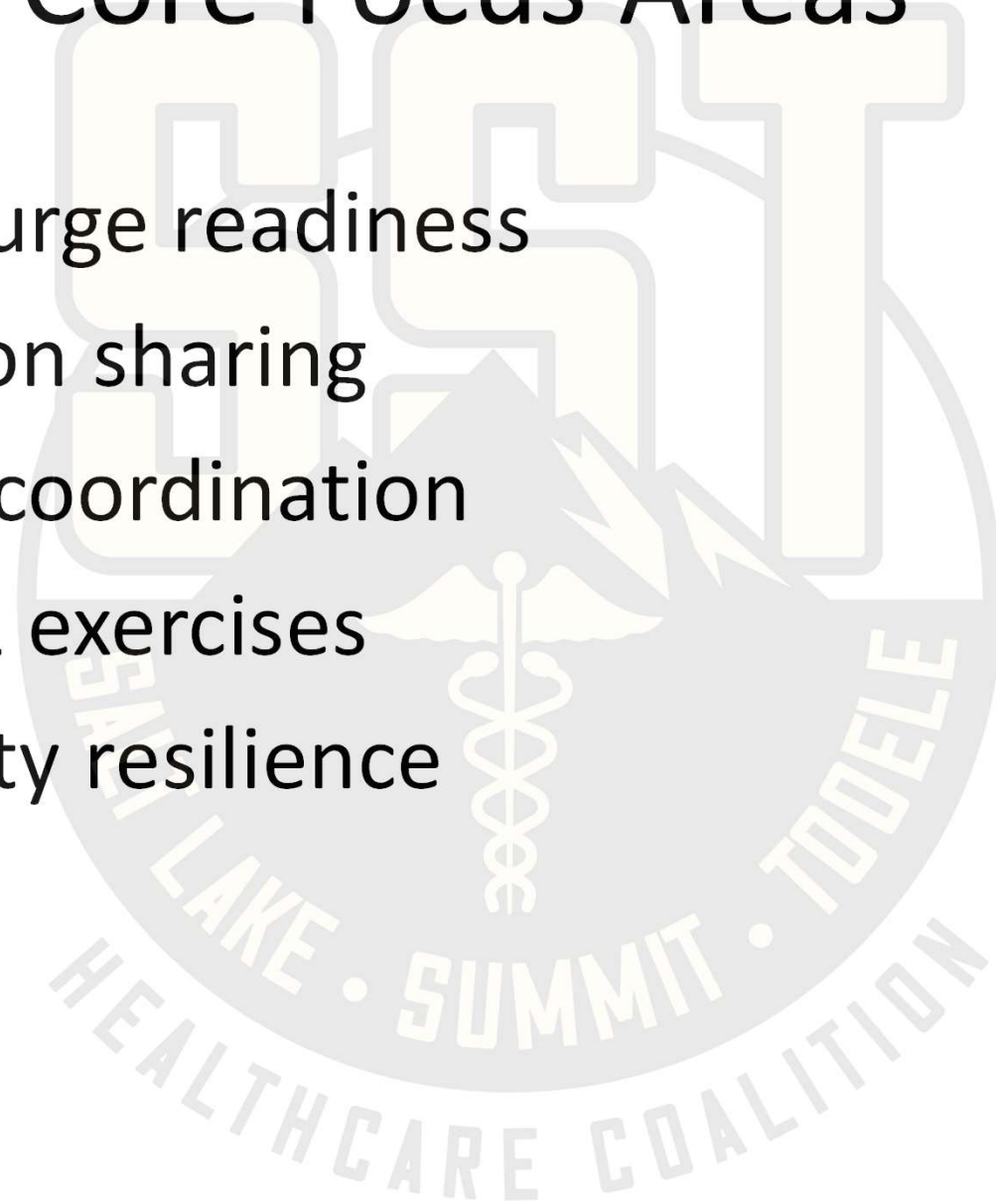
- Pass through funds from the Administration for Strategic Preparedness and Response (ASPR)
- Guided by an Executive Committee from the disciplines/regions represented
  - Captain Tom Simons is current chair
- Grant requires one FTE or equivalent for program administration and coordination

# Who's at the Table

- Hospitals & Health Systems
  - Community Clinics
  - Long Term Care Facilities (LTCF)
  - Skilled Nursing Facilities (SNF)
  - Dialysis Centers
- Emergency Medical Services & Fire
- Public Health
- Emergency Management
- Community Partners

# Core Focus Areas

- Medical surge readiness
- Information sharing
- Resource coordination
- Training & exercises
- Community resilience



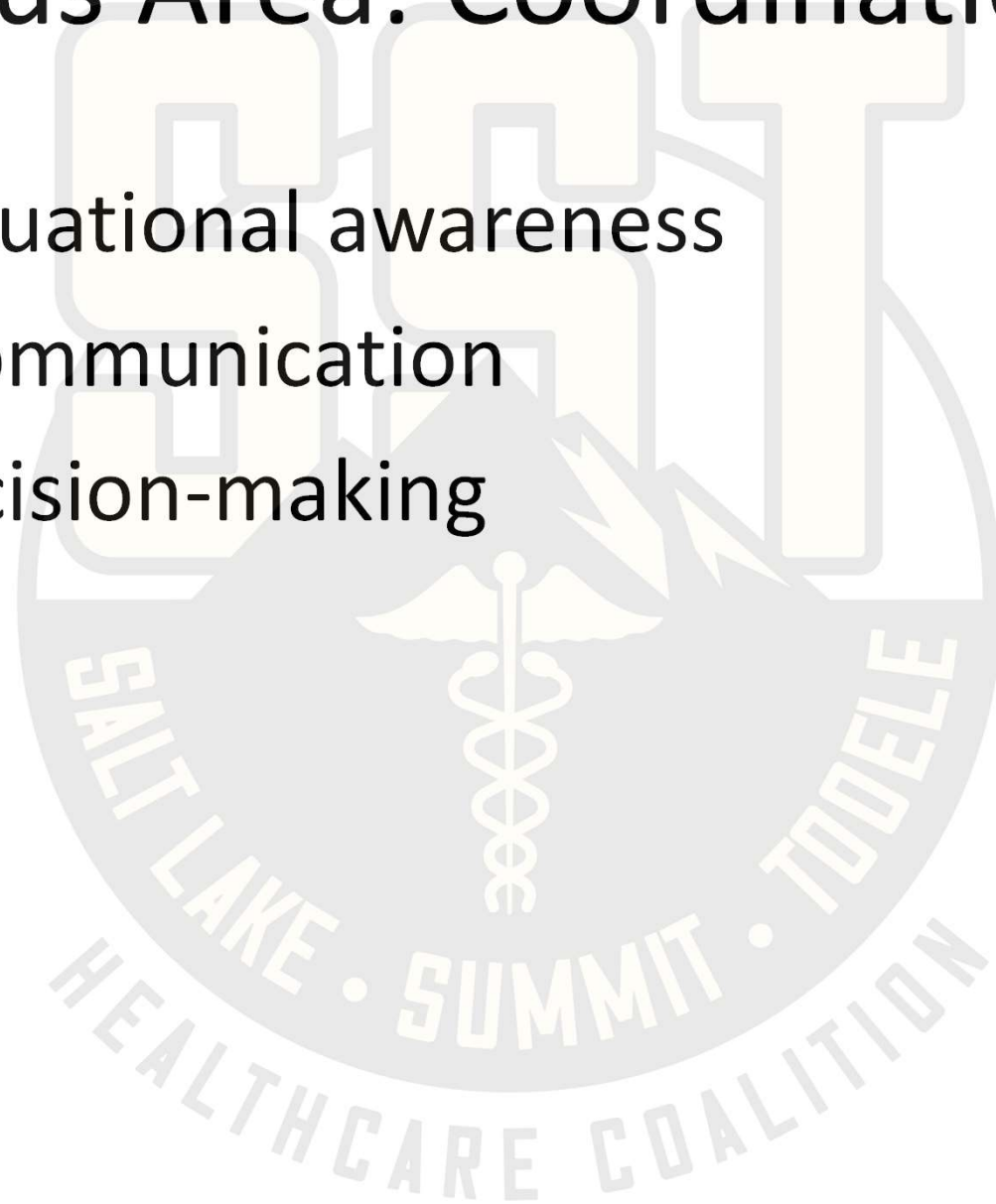
# Focus Area: Medical Surge

- Capacity strain
- Patient movement
- System coordination



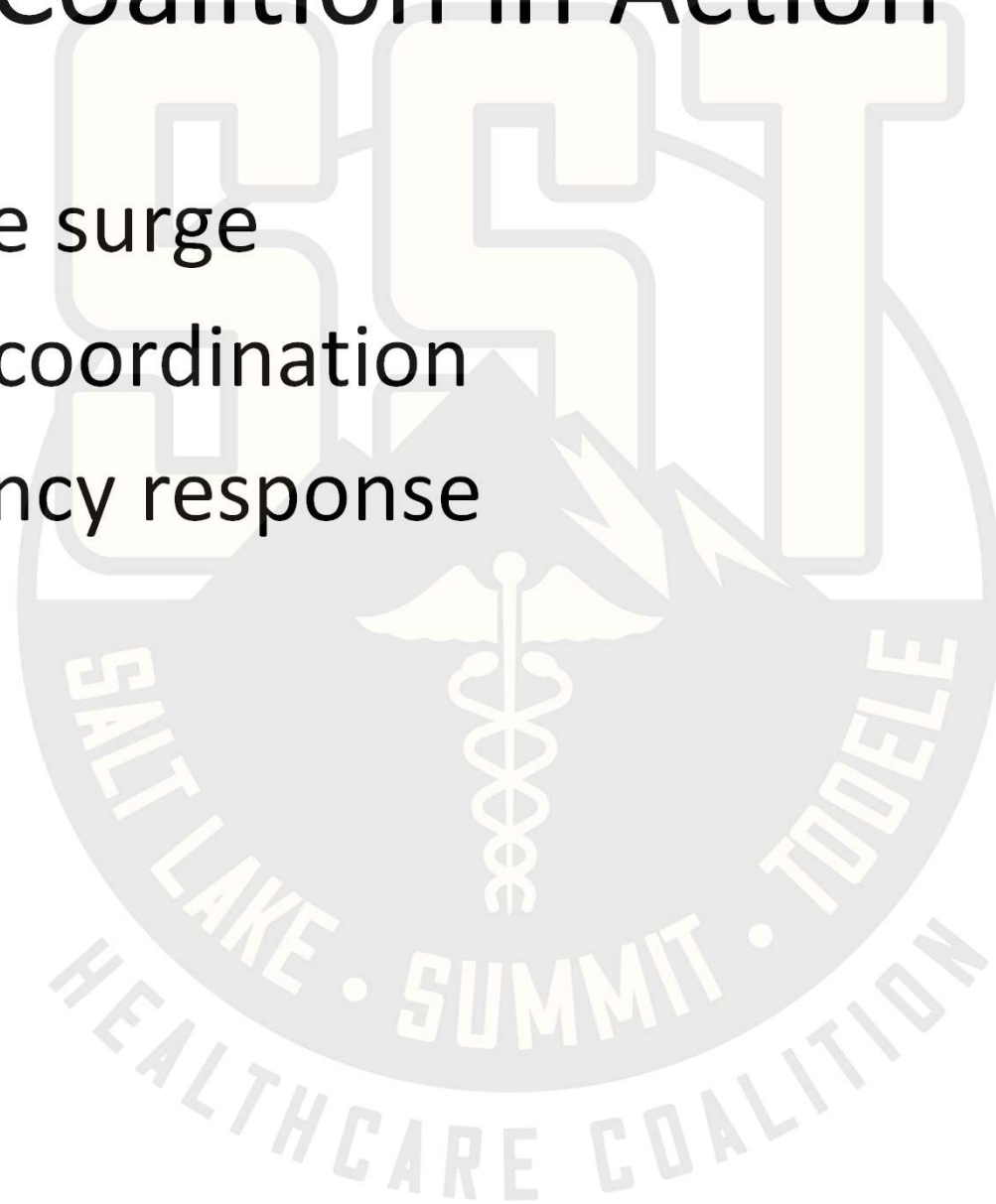
# Focus Area: Coordination

- Shared situational awareness
- Unified communication
- Faster decision-making



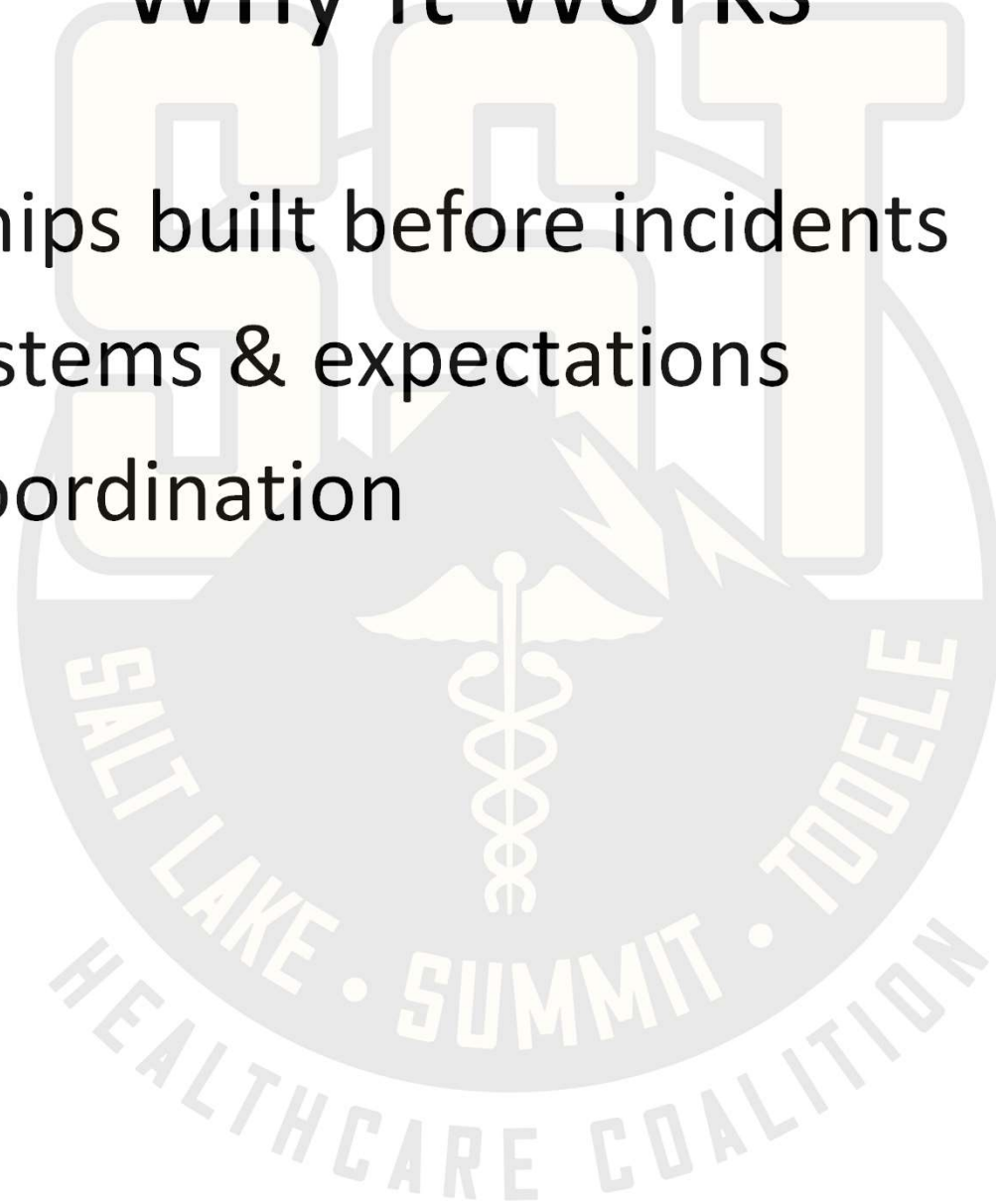
# Coalition in Action

- Healthcare surge
- Resource coordination
- Multi-agency response



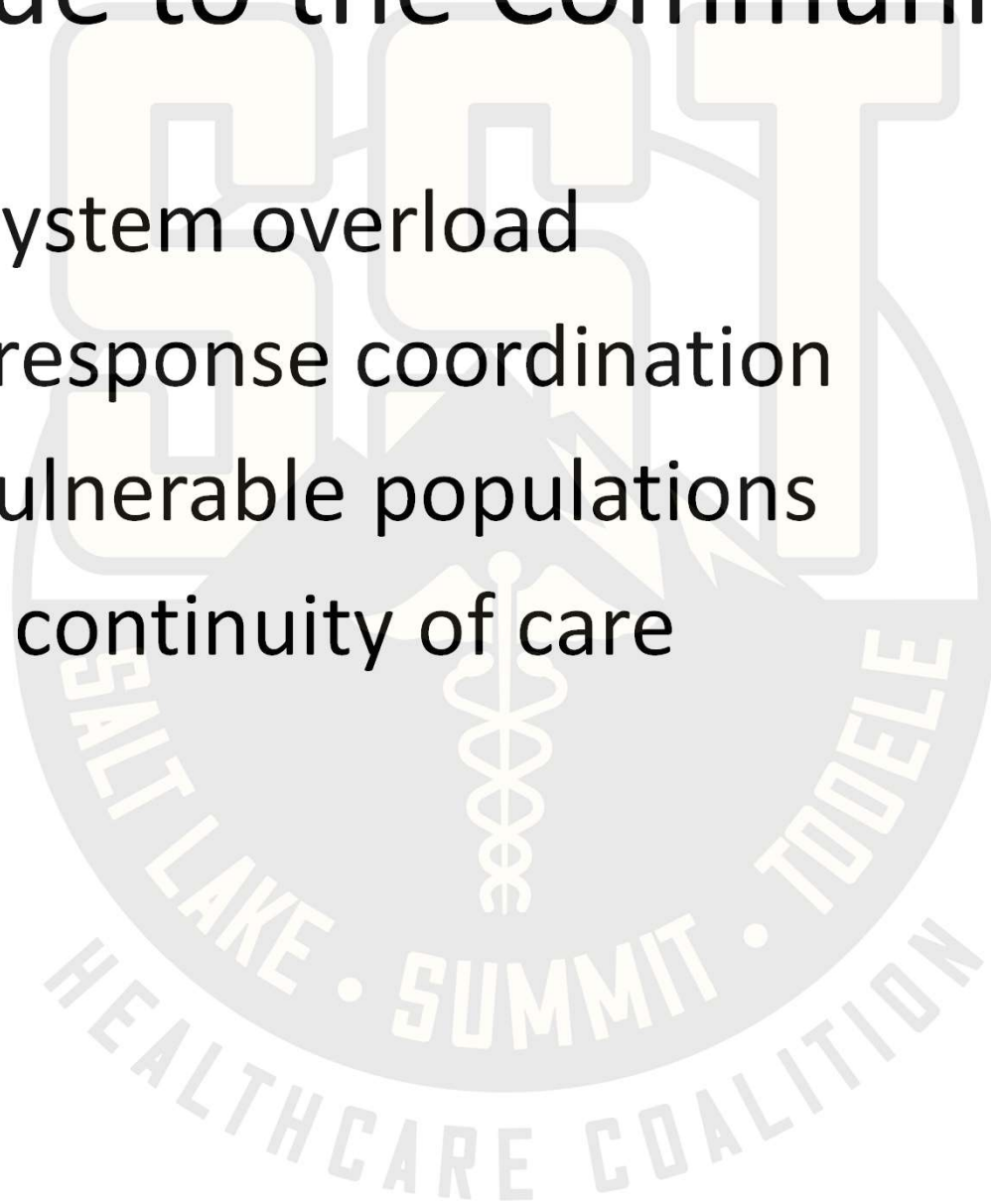
# Why It Works

- Relationships built before incidents
- Shared systems & expectations
- Trusted coordination



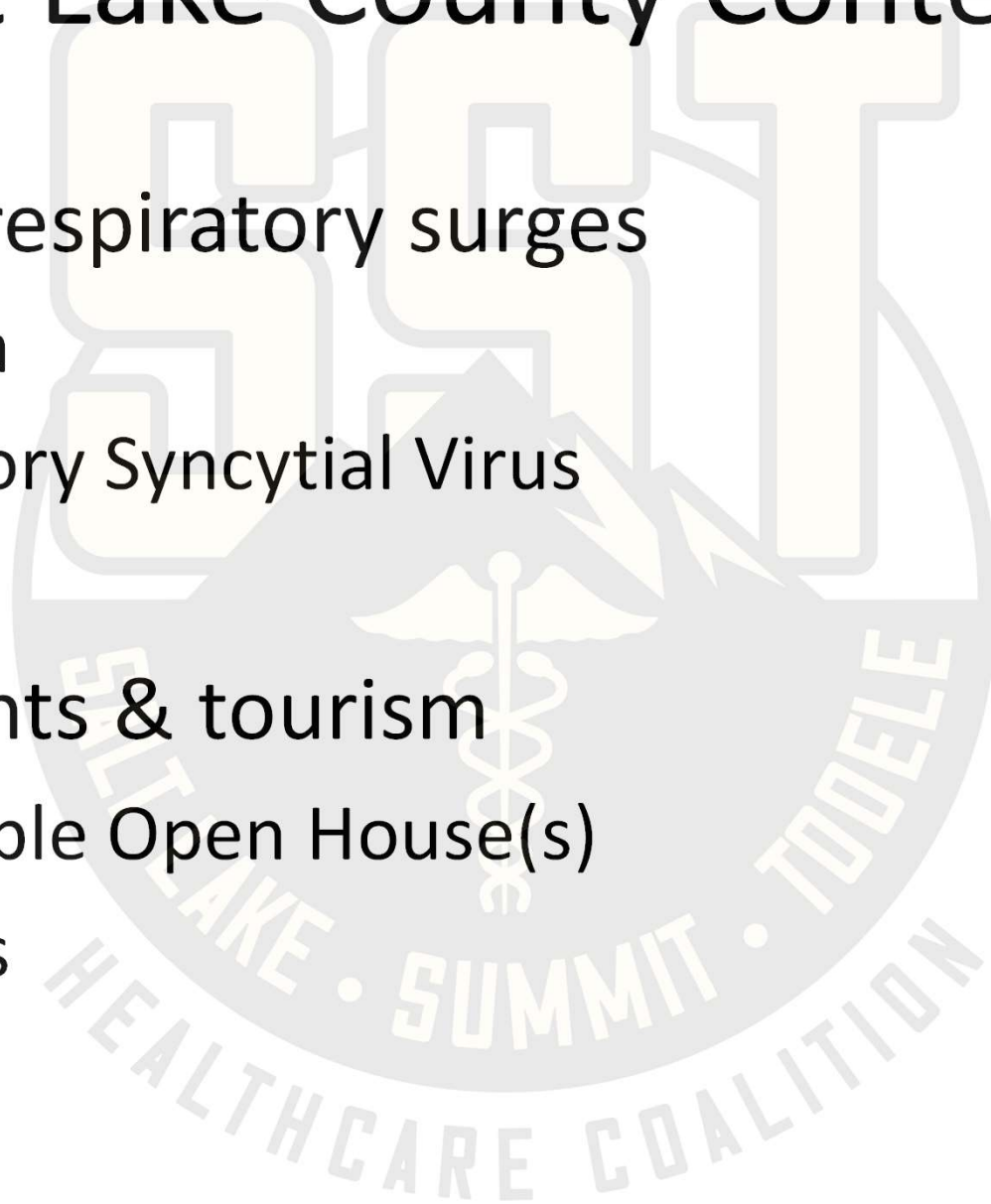
# Value to the Community

- Prevents system overload
- Improves response coordination
- Protects vulnerable populations
- Maintains continuity of care



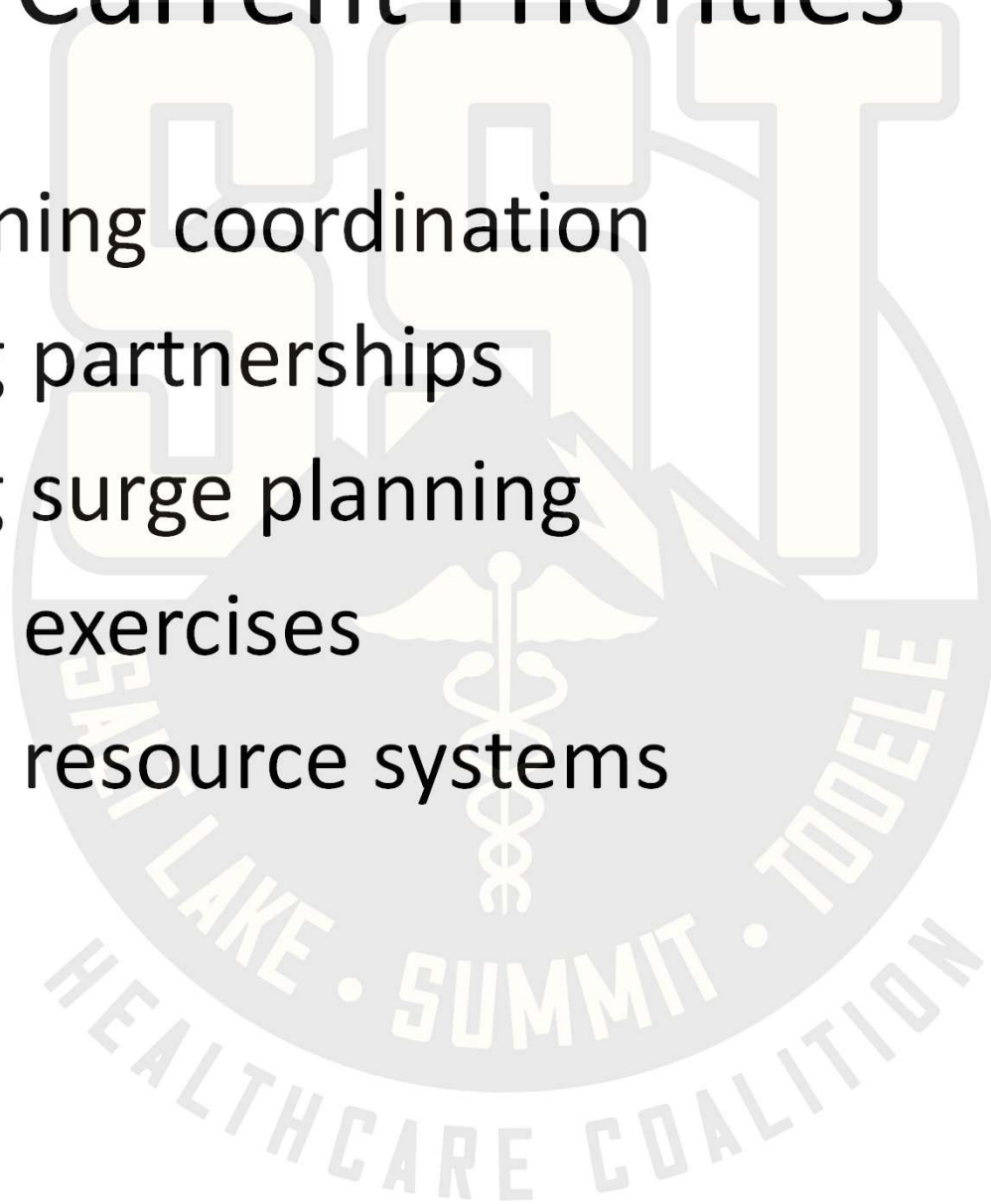
# Salt Lake County Context

- Seasonal respiratory surges
  - Influenza
  - Respiratory Syncytial Virus
  - COVID
- Large events & tourism
  - LDS Temple Open House(s)
  - Olympics



# Current Priorities

- Strengthening coordination
- Expanding partnerships
- Enhancing surge planning
- Training & exercises
- Improving resource systems



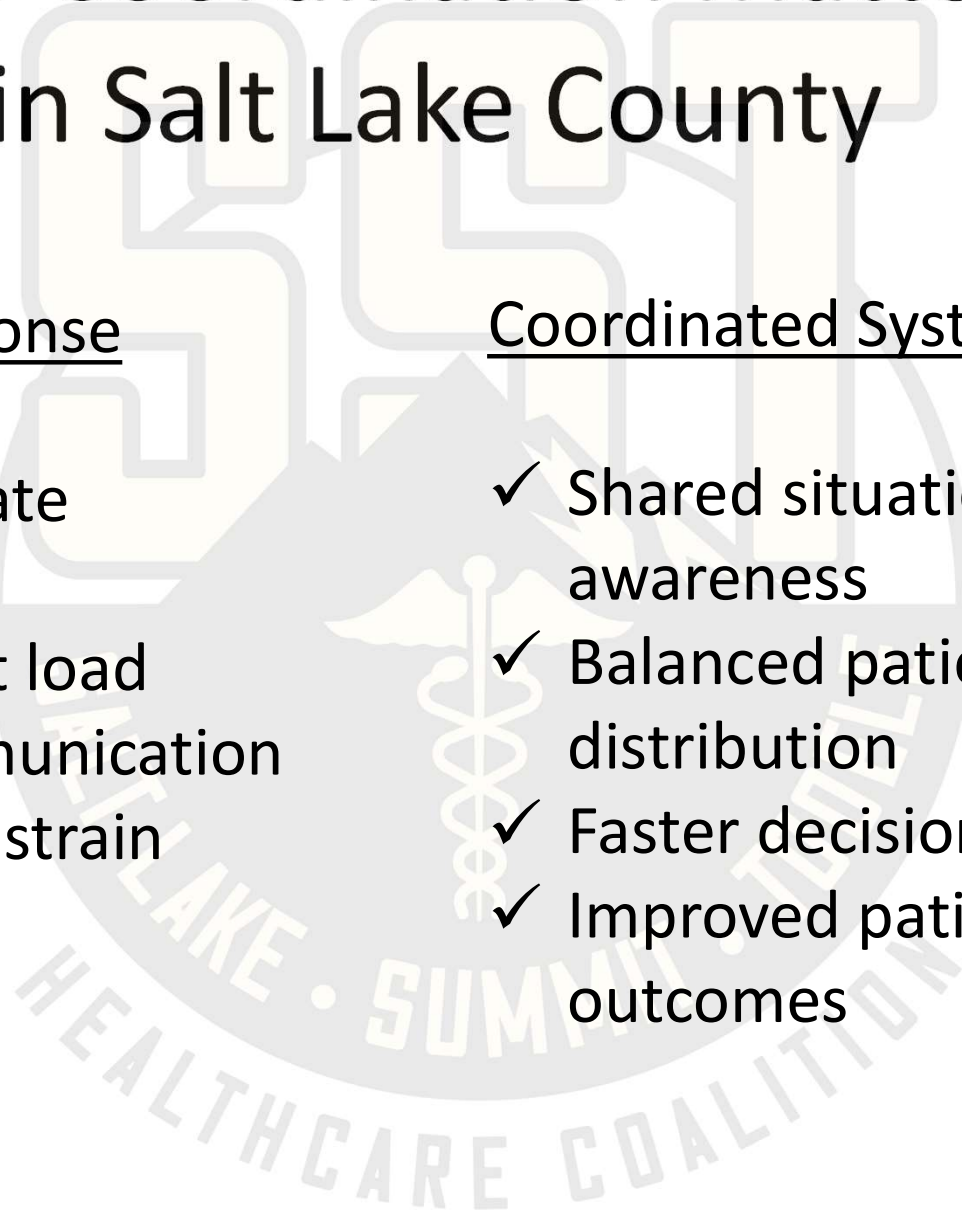
# Why Coordination Matters in Salt Lake County

## Fragmented Response

- × Hospitals operate independently
- × Uneven patient load
- × Delays in communication
- × Increased EMS strain

## Coordinated System

- ✓ Shared situational awareness
- ✓ Balanced patient distribution
- ✓ Faster decision-making
- ✓ Improved patient outcomes



# In Summary

- Healthcare systems can become quickly overwhelmed in an emergency
- A coordinated system is a resilient system
- Relationships built now result in stronger communication in an emergency





Questions?

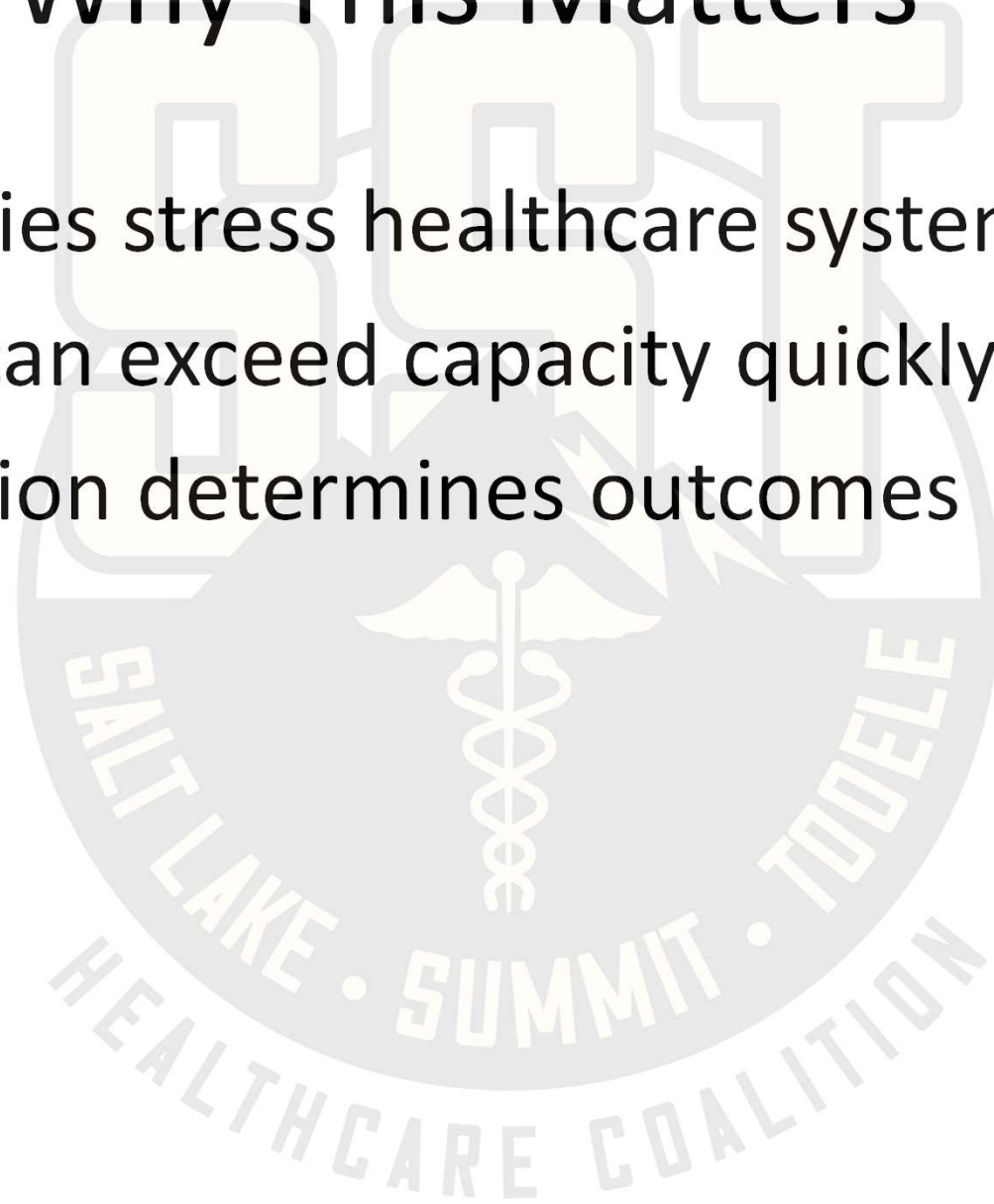
# SST Healthcare Coalition

*Supporting Community Health & Health Care  
System Readiness in  
Salt Lake, Summit and Tooele Counties*

Michelle McGaughey, SLCoHD Emergency Preparedness Bureau Manager  
Captain Tom Simons, MA, CEM, Salt Lake City Emergency Management

# Why This Matters

- Emergencies stress healthcare systems
- Demand can exceed capacity quickly
- Coordination determines outcomes



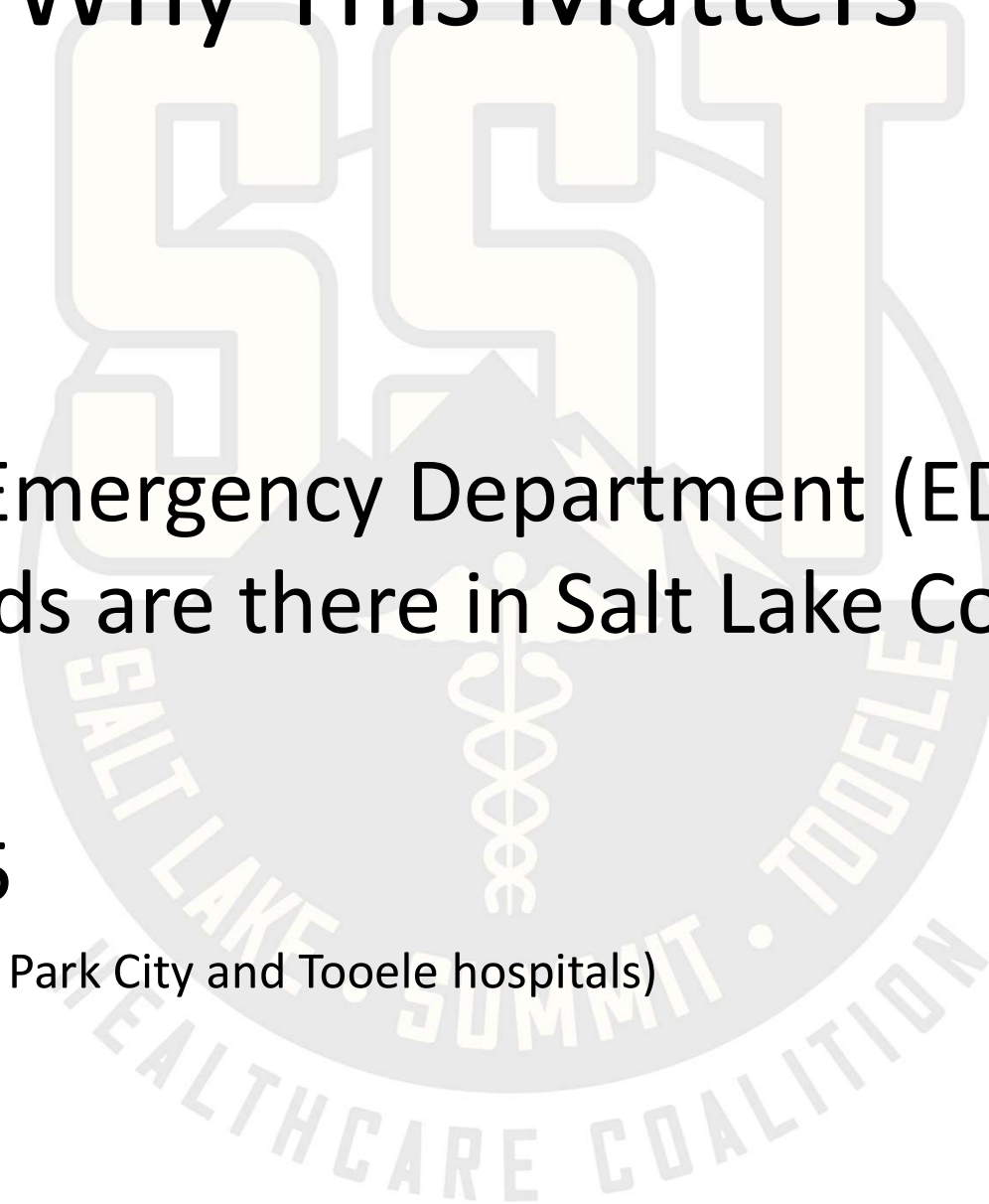
# Why This Matters

Quick Quiz:

How many Emergency Department (ED)  
Licensed Beds are there in Salt Lake County?

**Answer: 285**

(310 if you add in the Park City and Tooele hospitals)



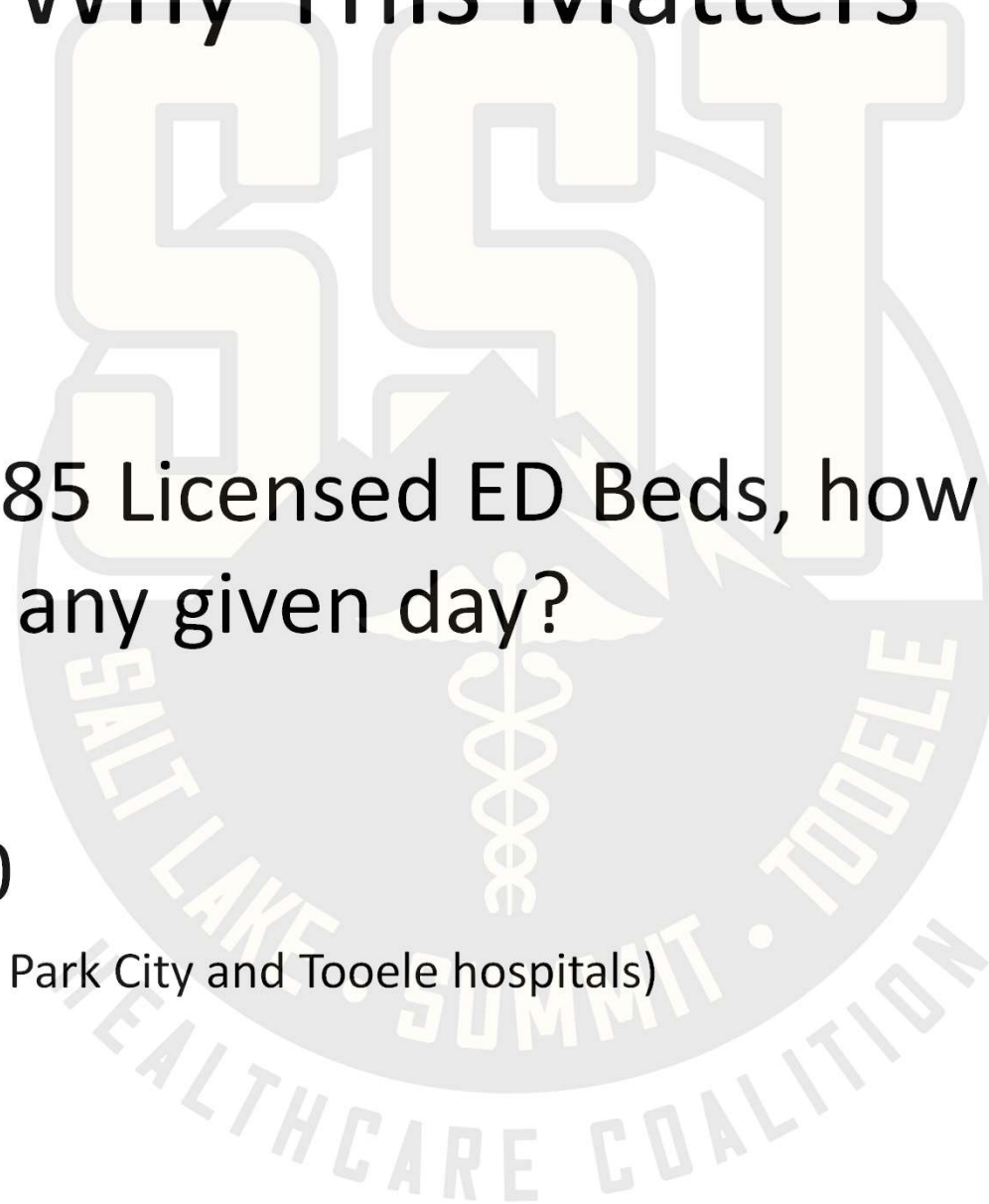
# Why This Matters

Quick Quiz:

Out of the 285 Licensed ED Beds, how many are available on any given day?

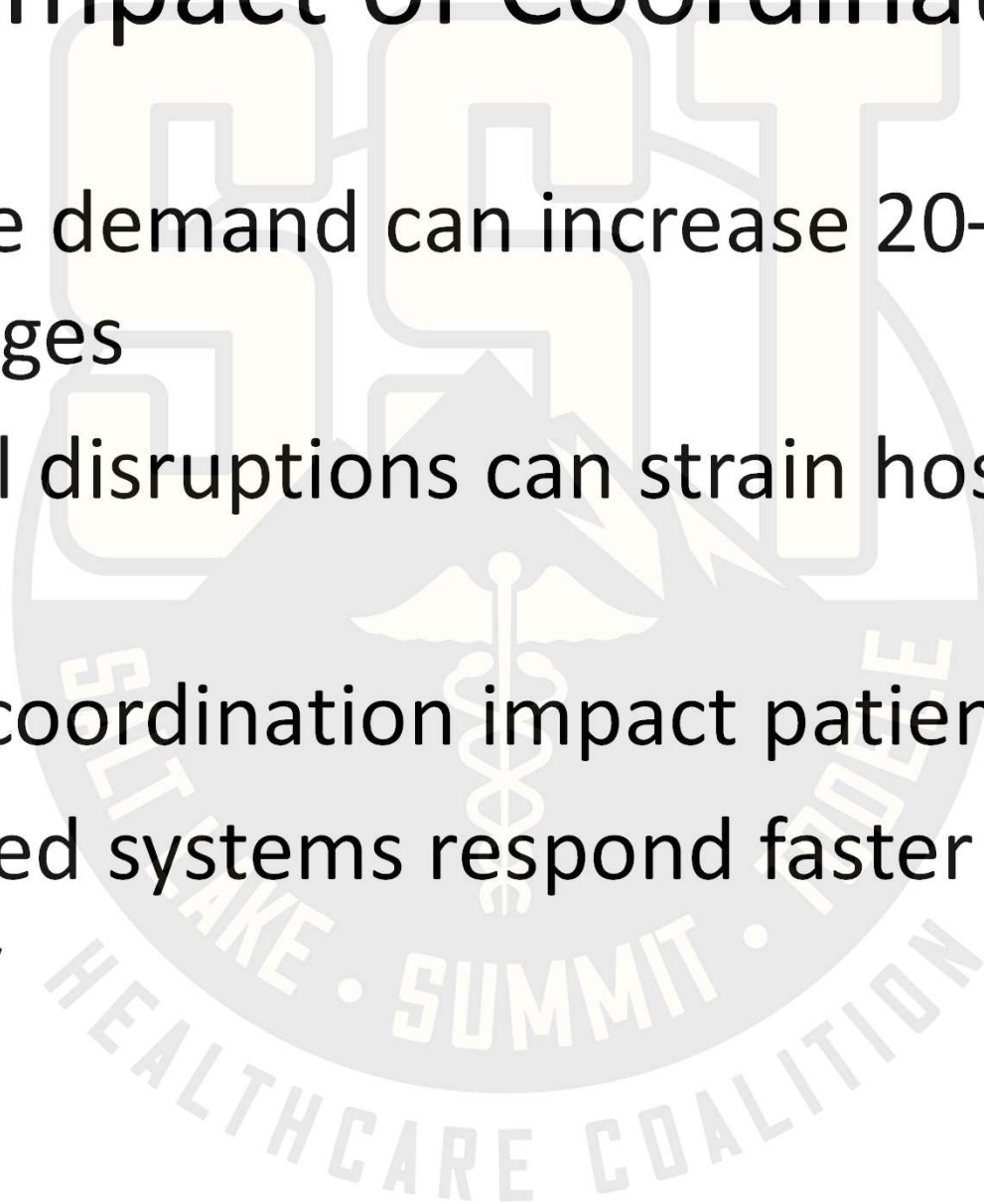
**Answer: 100**

(109 if you add in the Park City and Tooele hospitals)



# The Impact of Coordination

- Healthcare demand can increase 20–30% during surges
- Even small disruptions can strain hospital capacity
- Delays in coordination impact patient care
- Coordinated systems respond faster and more effectively



# In a Disaster

## 7.0 Earthquake

- Injured: 7,400 – 9,000 with life threatening injuries needing hospital care
- Injuries needing hospital treatment could outnumber available beds by 90 to 1.



# What is the Healthcare Coalition

- Regional coordination network including Salt Lake, Summit and Tooele County (SST Coalition)
- Healthcare + Public Health + EMS + EM
- Built for preparedness & response



# Program Basics

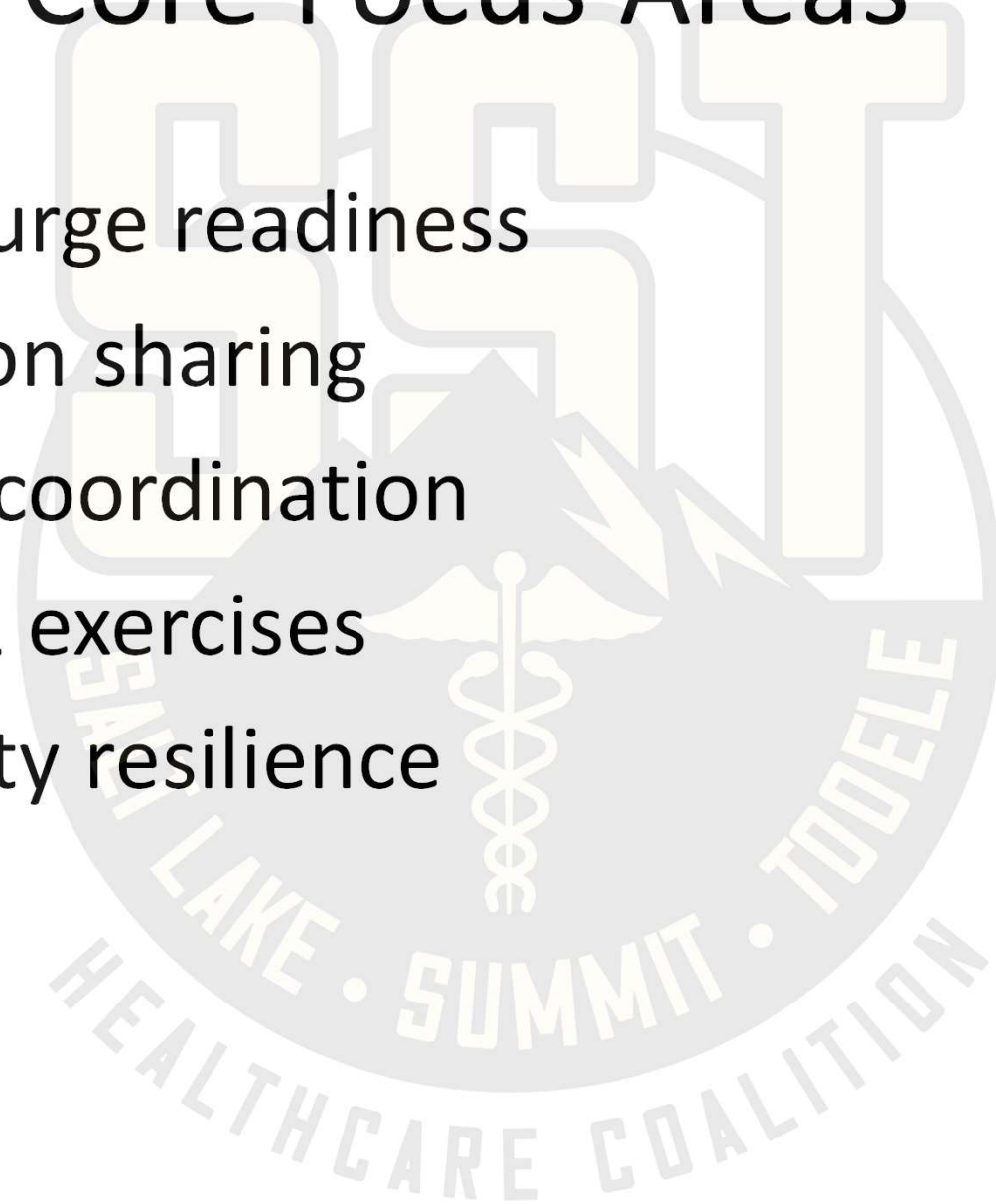
- Pass through funds from the Administration for Strategic Preparedness and Response (ASPR)
- Guided by an Executive Committee from the disciplines/regions represented
  - Captain Tom Simons is current chair
- Grant requires one FTE or equivalent for program administration and coordination

# Who's at the Table

- Hospitals & Health Systems
  - Community Clinics
  - Long Term Care Facilities (LTCF)
  - Skilled Nursing Facilities (SNF)
  - Dialysis Centers
- Emergency Medical Services & Fire
- Public Health
- Emergency Management
- Community Partners

# Core Focus Areas

- Medical surge readiness
- Information sharing
- Resource coordination
- Training & exercises
- Community resilience



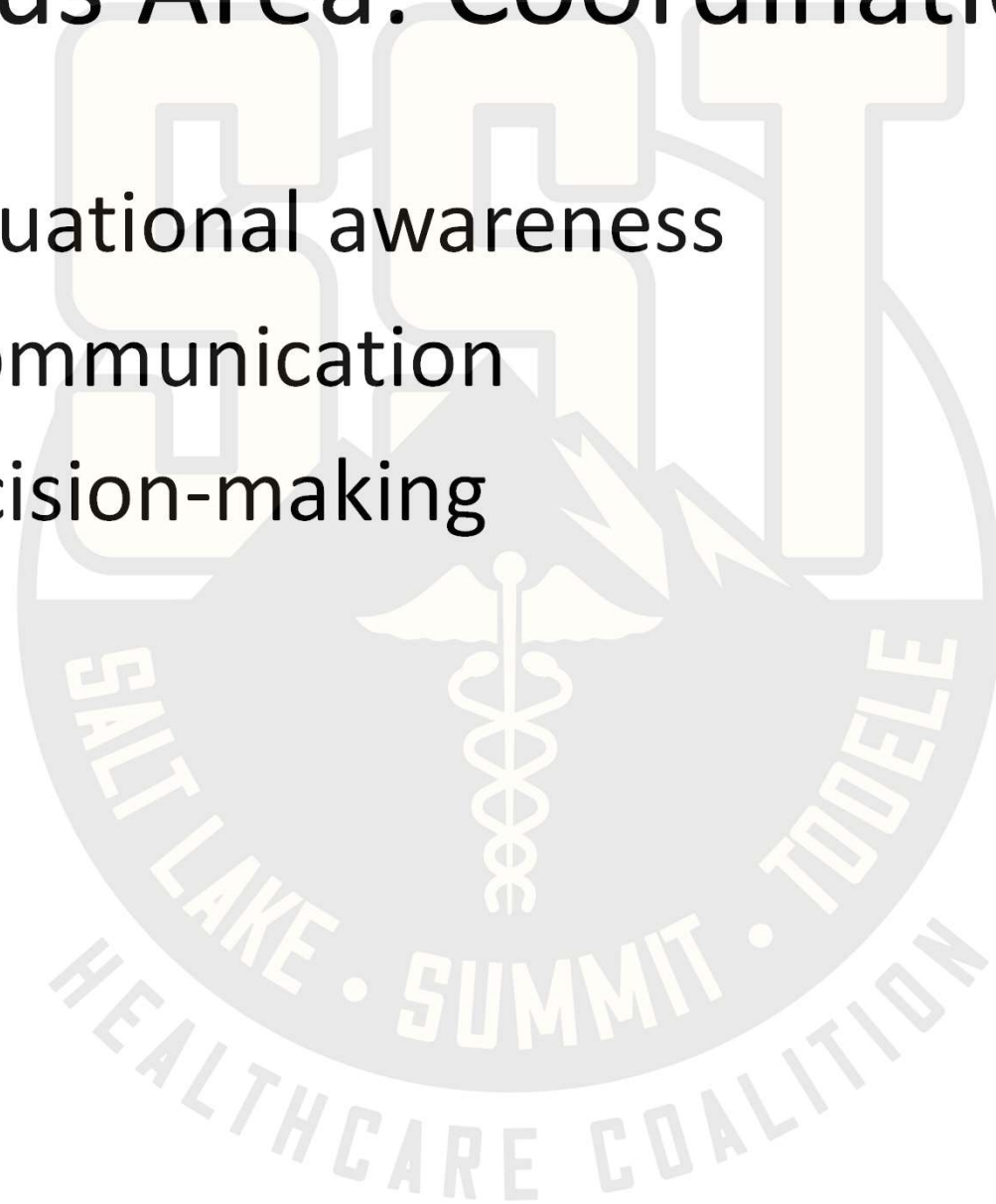
# Focus Area: Medical Surge

- Capacity strain
- Patient movement
- System coordination



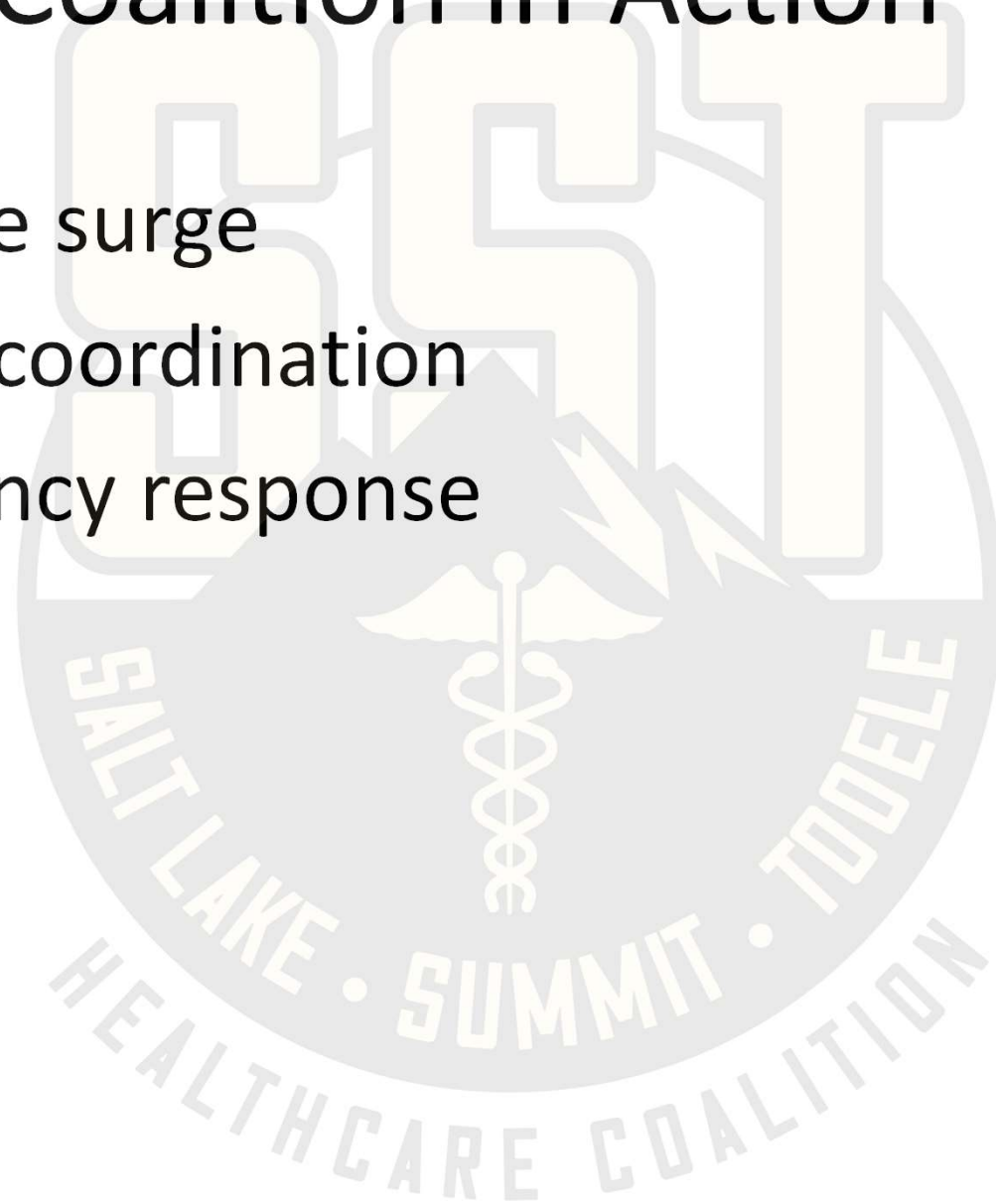
# Focus Area: Coordination

- Shared situational awareness
- Unified communication
- Faster decision-making



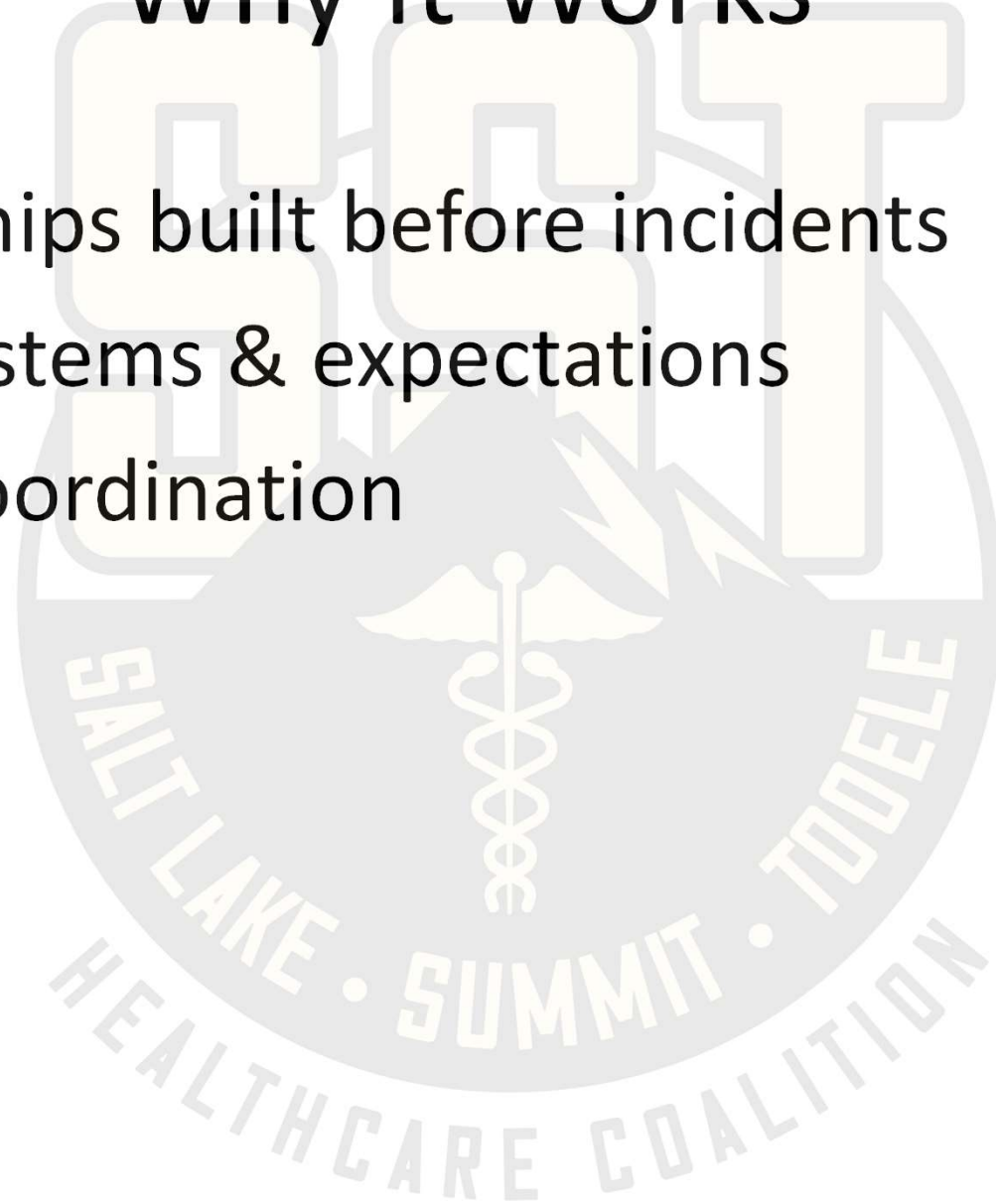
# Coalition in Action

- Healthcare surge
- Resource coordination
- Multi-agency response



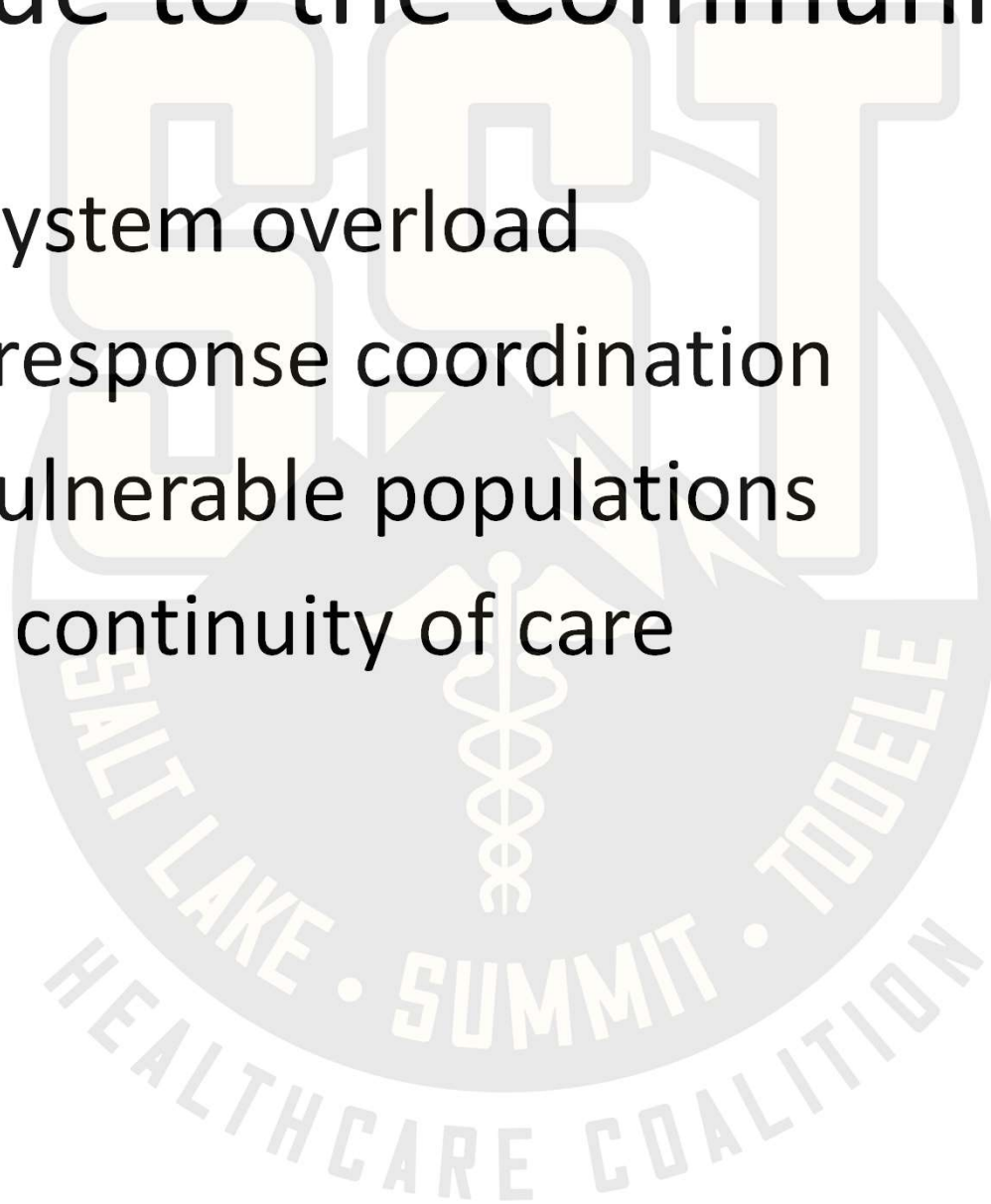
# Why It Works

- Relationships built before incidents
- Shared systems & expectations
- Trusted coordination



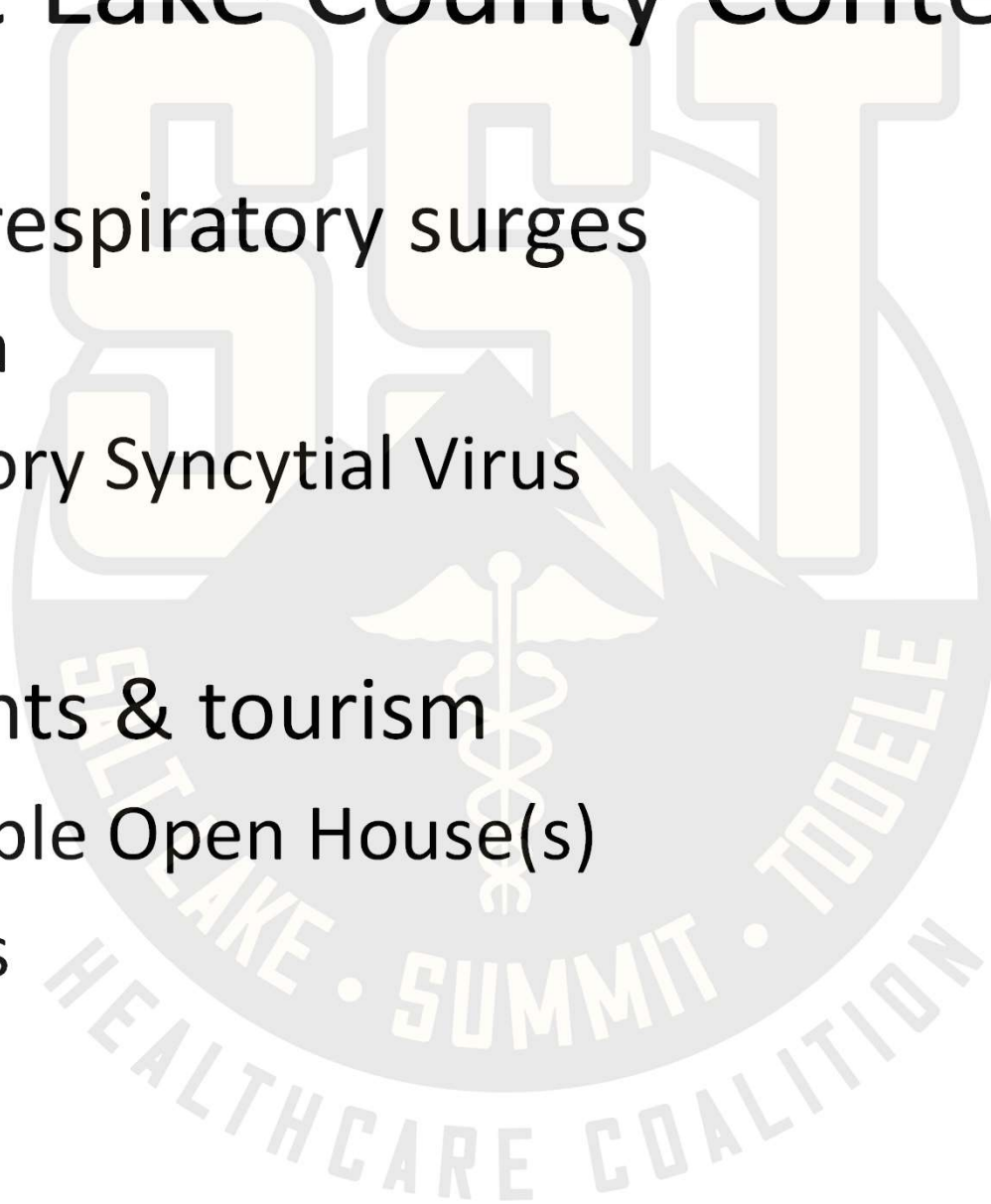
# Value to the Community

- Prevents system overload
- Improves response coordination
- Protects vulnerable populations
- Maintains continuity of care



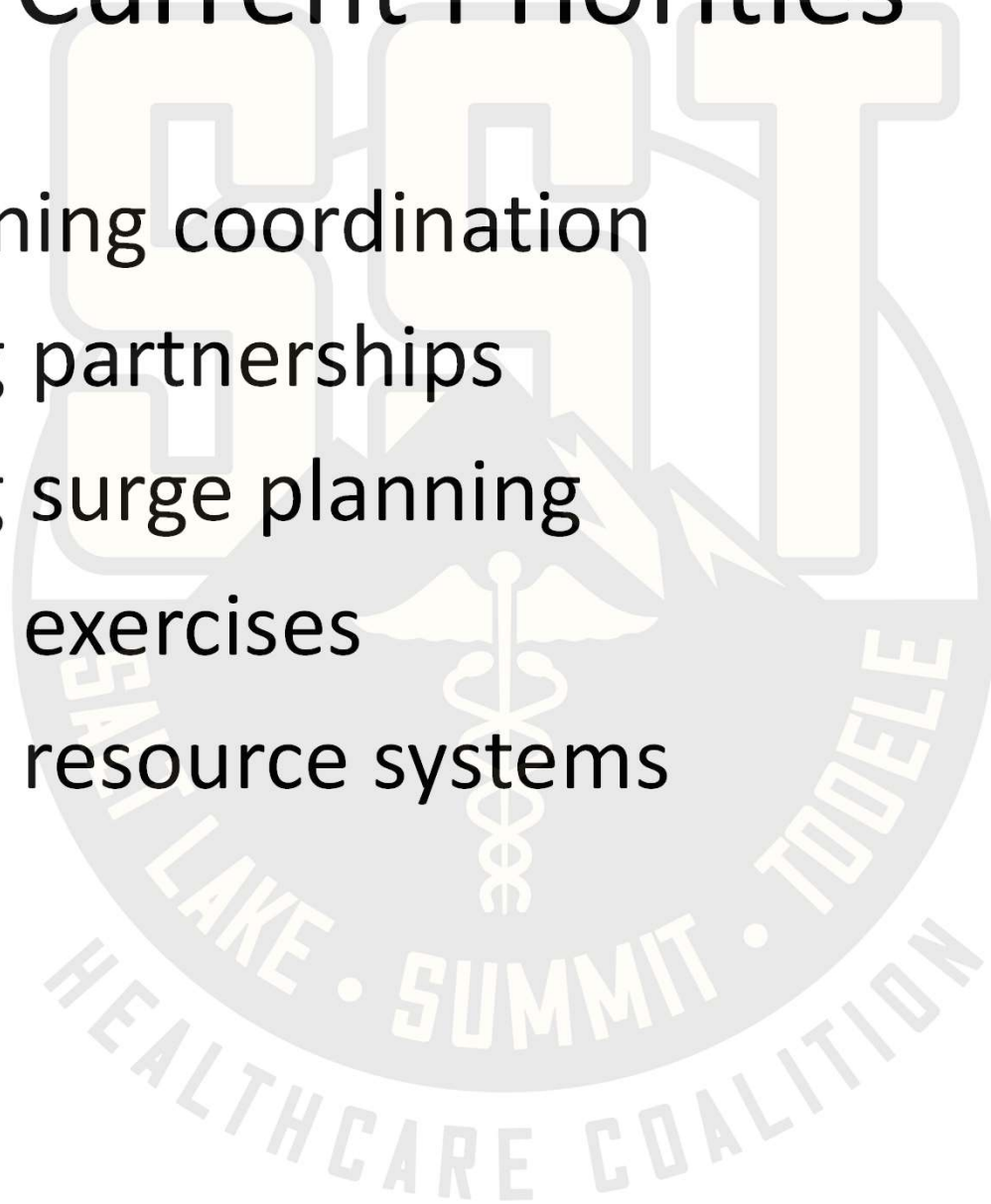
# Salt Lake County Context

- Seasonal respiratory surges
  - Influenza
  - Respiratory Syncytial Virus
  - COVID
- Large events & tourism
  - LDS Temple Open House(s)
  - Olympics



# Current Priorities

- Strengthening coordination
- Expanding partnerships
- Enhancing surge planning
- Training & exercises
- Improving resource systems



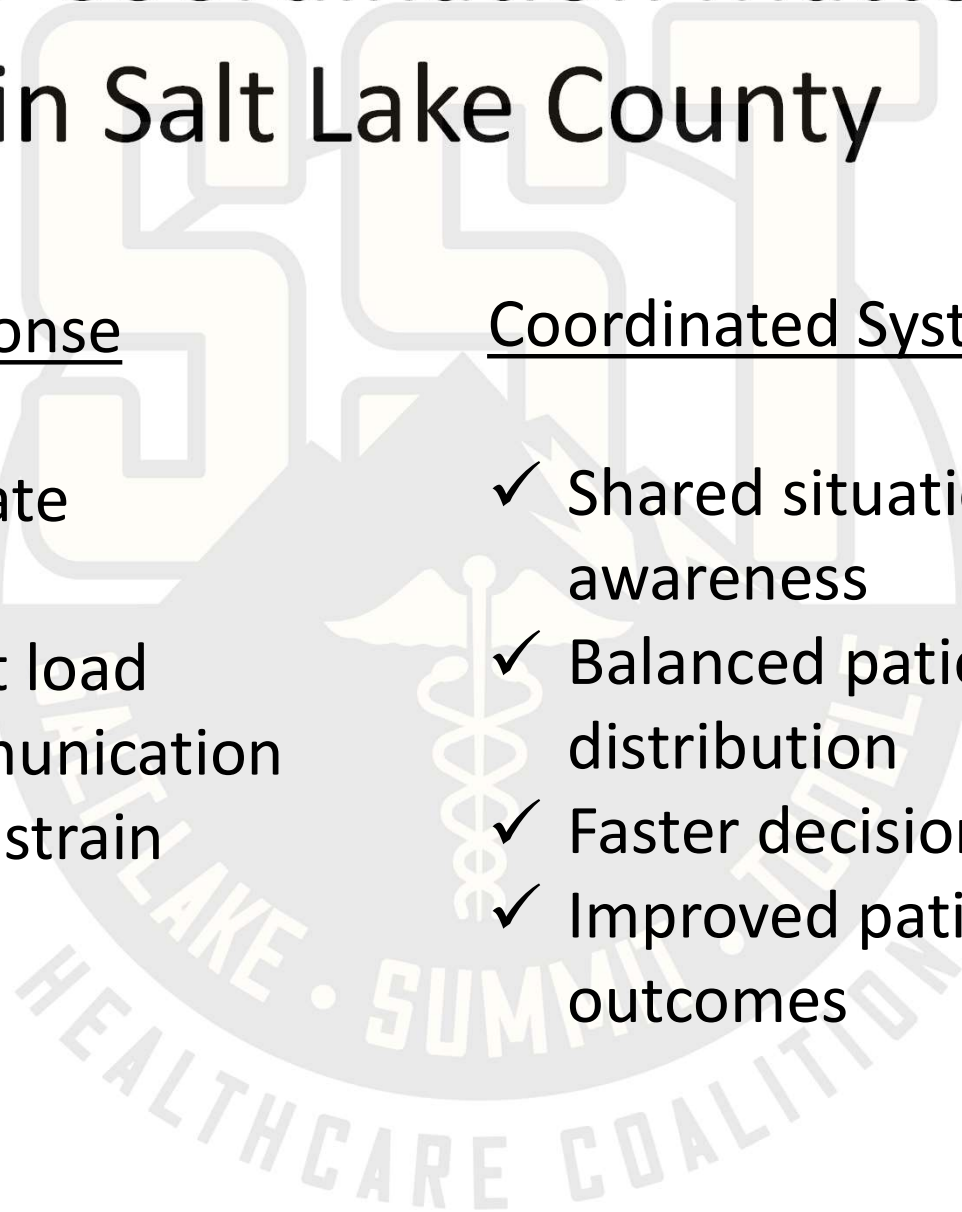
# Why Coordination Matters in Salt Lake County

## Fragmented Response

- × Hospitals operate independently
- × Uneven patient load
- × Delays in communication
- × Increased EMS strain

## Coordinated System

- ✓ Shared situational awareness
- ✓ Balanced patient distribution
- ✓ Faster decision-making
- ✓ Improved patient outcomes



# In Summary

- Healthcare systems can become quickly overwhelmed in an emergency
- A coordinated system is a resilient system
- Relationships built now result in stronger communication in an emergency





Questions?

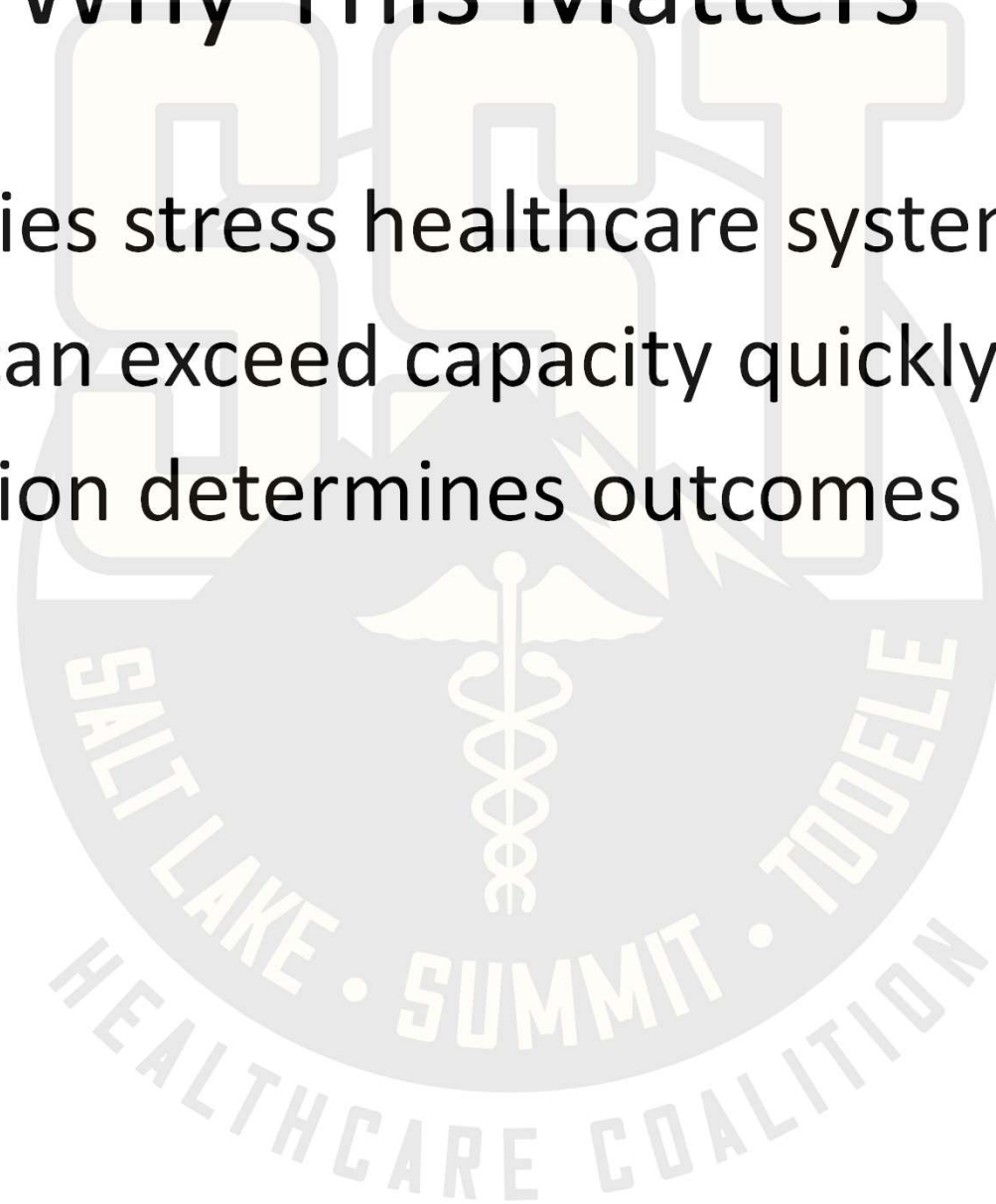
# SST Healthcare Coalition

*Supporting Community Health & Health Care  
System Readiness in  
Salt Lake, Summit and Tooele Counties*

Michelle McGaughey, SLCoHD Emergency Preparedness Bureau Manager  
Captain Tom Simons, MA, CEM, Salt Lake City Emergency Management

# Why This Matters

- Emergencies stress healthcare systems
- Demand can exceed capacity quickly
- Coordination determines outcomes



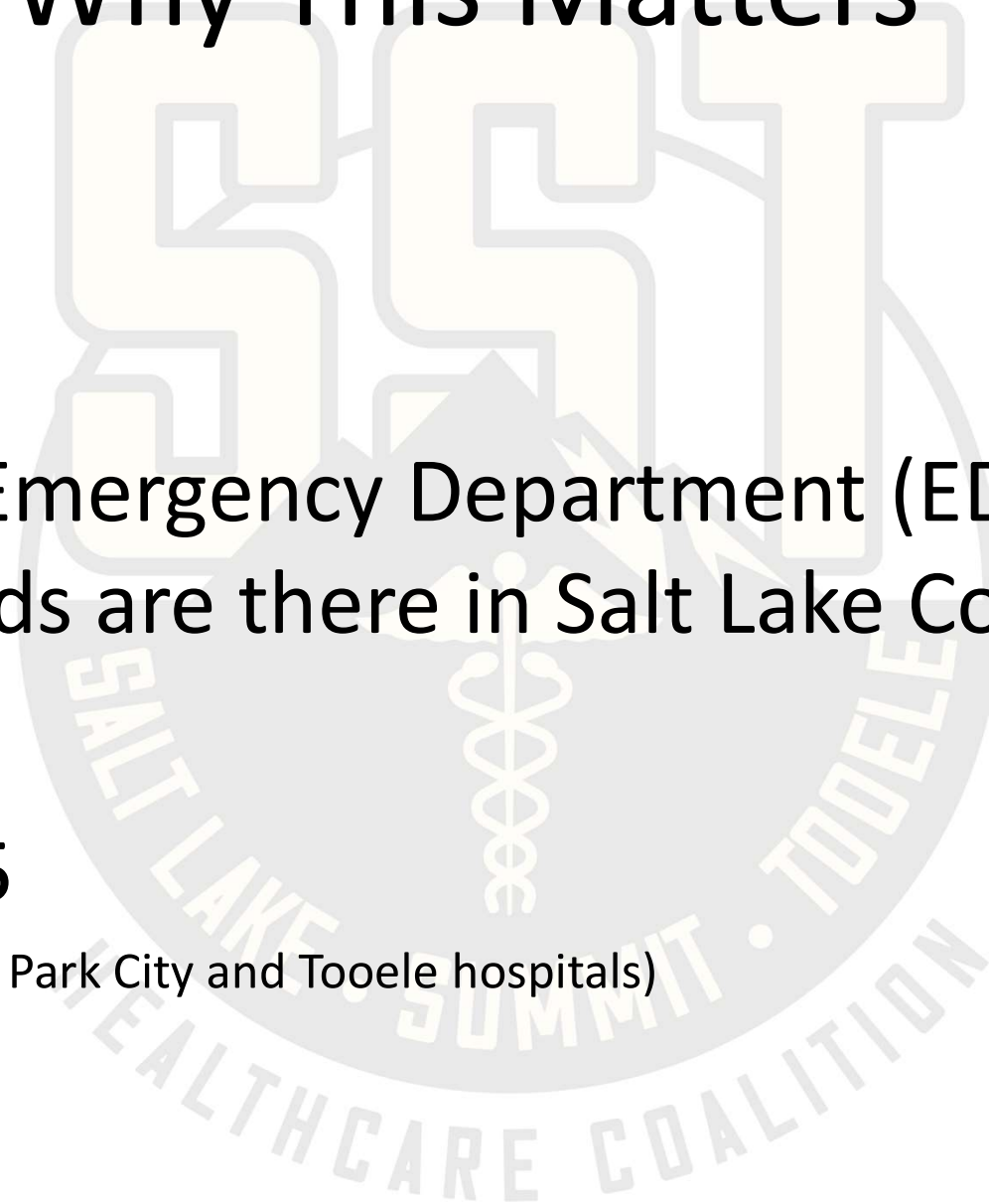
# Why This Matters

Quick Quiz:

How many Emergency Department (ED)  
Licensed Beds are there in Salt Lake County?

**Answer: 285**

(310 if you add in the Park City and Tooele hospitals)



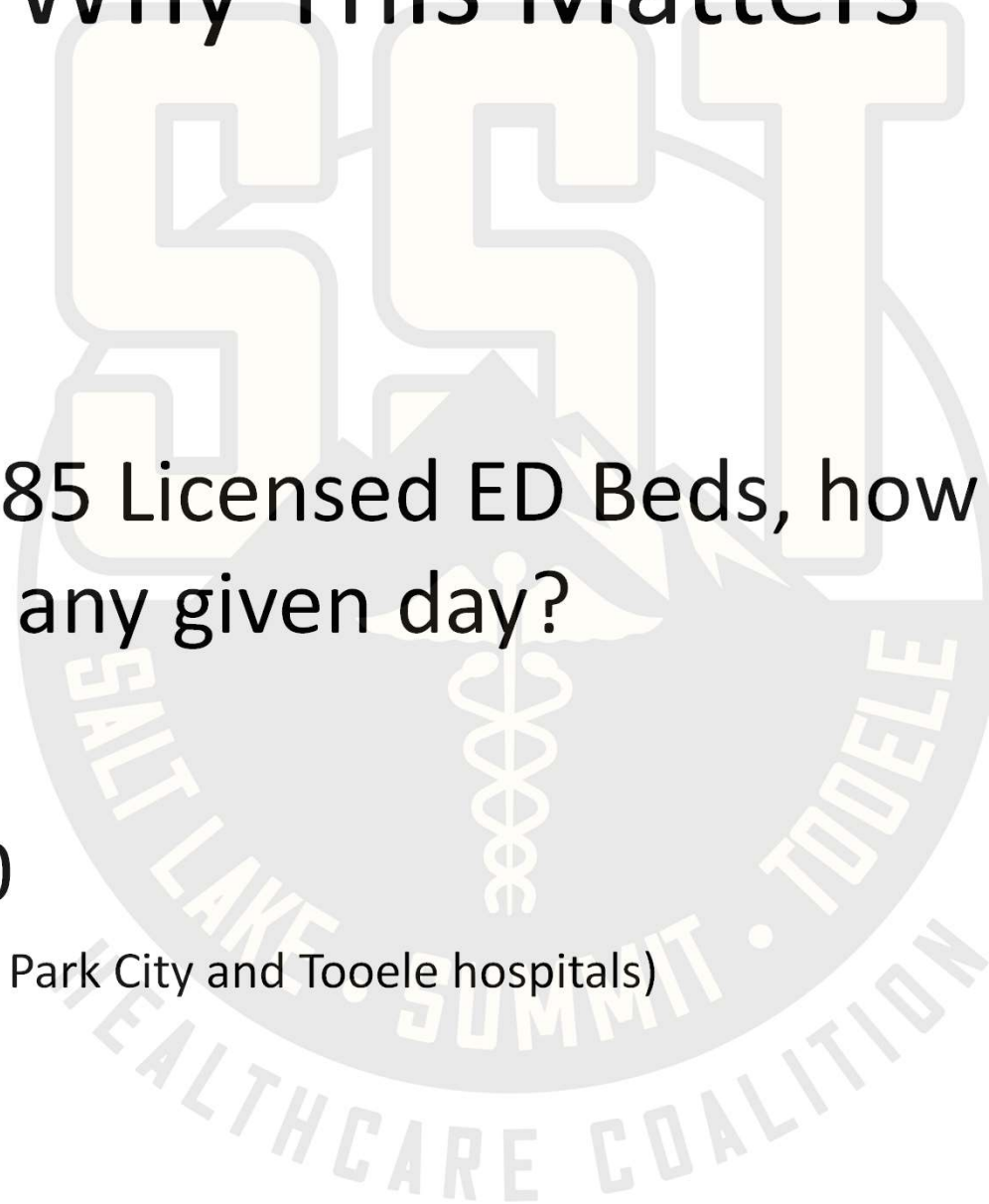
# Why This Matters

Quick Quiz:

Out of the 285 Licensed ED Beds, how many are available on any given day?

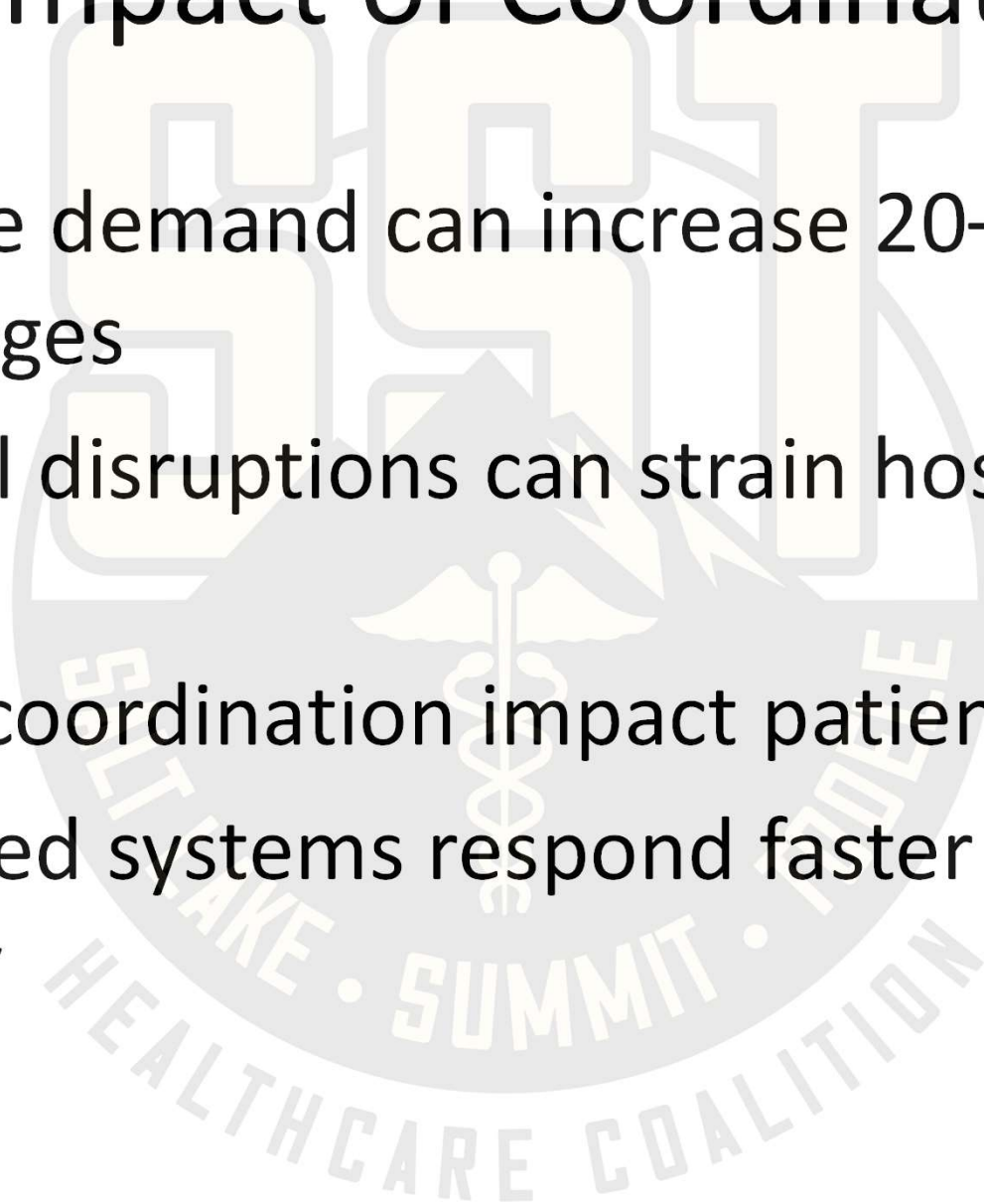
**Answer: 100**

(109 if you add in the Park City and Tooele hospitals)



# The Impact of Coordination

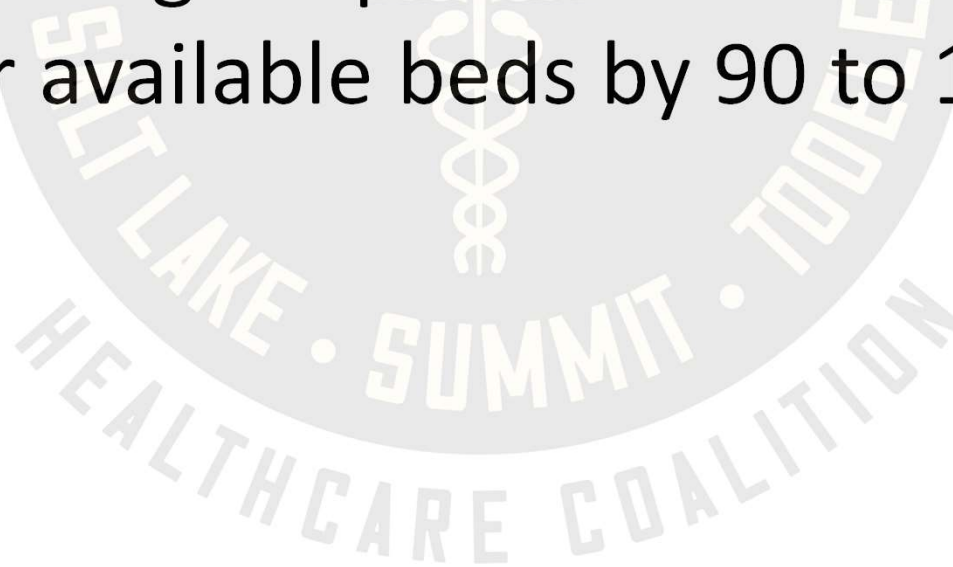
- Healthcare demand can increase 20–30% during surges
- Even small disruptions can strain hospital capacity
- Delays in coordination impact patient care
- Coordinated systems respond faster and more effectively



# In a Disaster

## 7.0 Earthquake

- Injured: 7,400 – 9,000 with life threatening injuries needing hospital care
- Injuries needing hospital treatment could outnumber available beds by 90 to 1.



# What is the Healthcare Coalition

- Regional coordination network including Salt Lake, Summit and Tooele County (SST Coalition)
- Healthcare + Public Health + EMS + EM
- Built for preparedness & response



# Program Basics

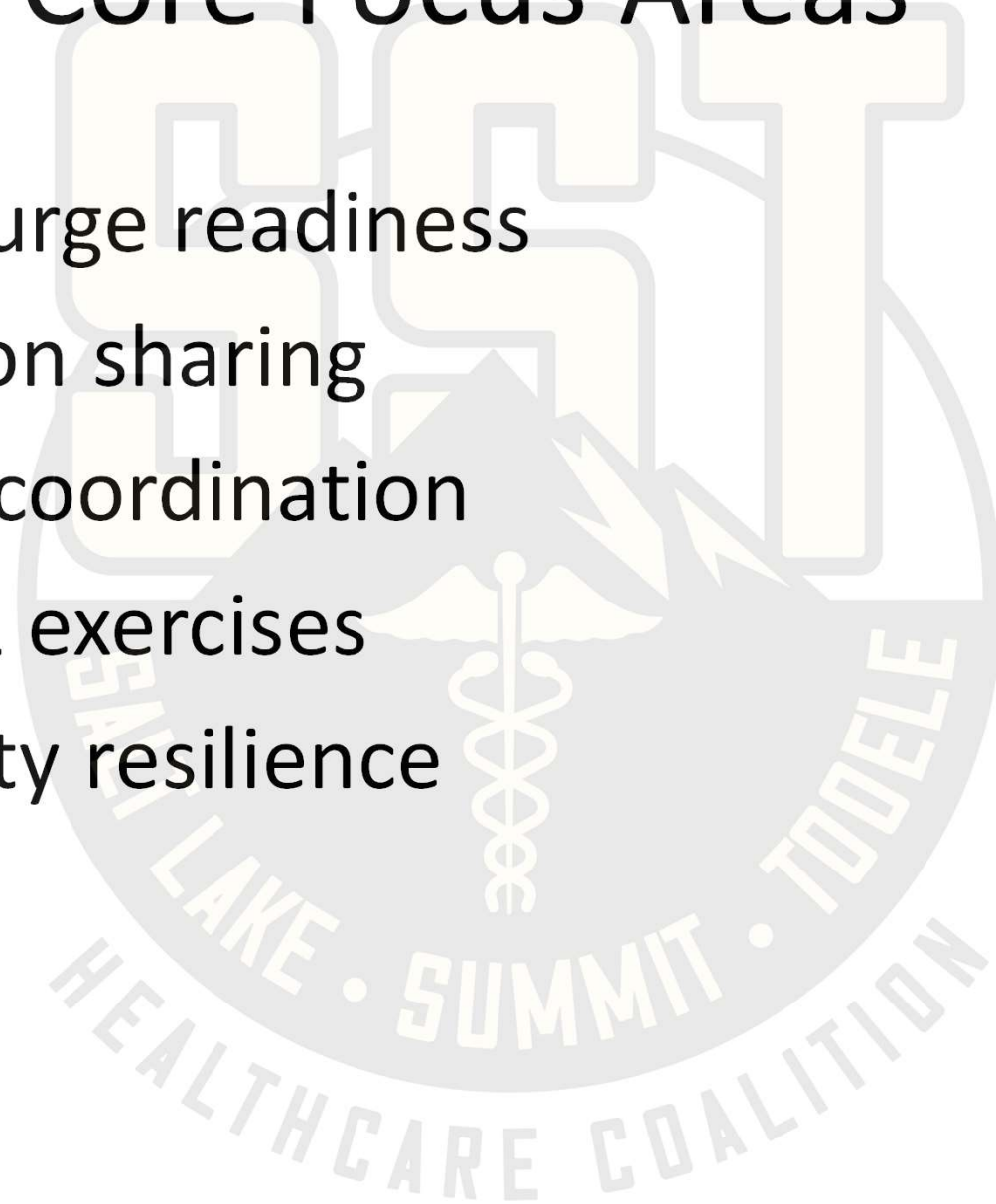
- Pass through funds from the Administration for Strategic Preparedness and Response (ASPR)
- Guided by an Executive Committee from the disciplines/regions represented
  - Captain Tom Simons is current chair
- Grant requires one FTE or equivalent for program administration and coordination

# Who's at the Table

- Hospitals & Health Systems
  - Community Clinics
  - Long Term Care Facilities (LTCF)
  - Skilled Nursing Facilities (SNF)
  - Dialysis Centers
- Emergency Medical Services & Fire
- Public Health
- Emergency Management
- Community Partners

# Core Focus Areas

- Medical surge readiness
- Information sharing
- Resource coordination
- Training & exercises
- Community resilience



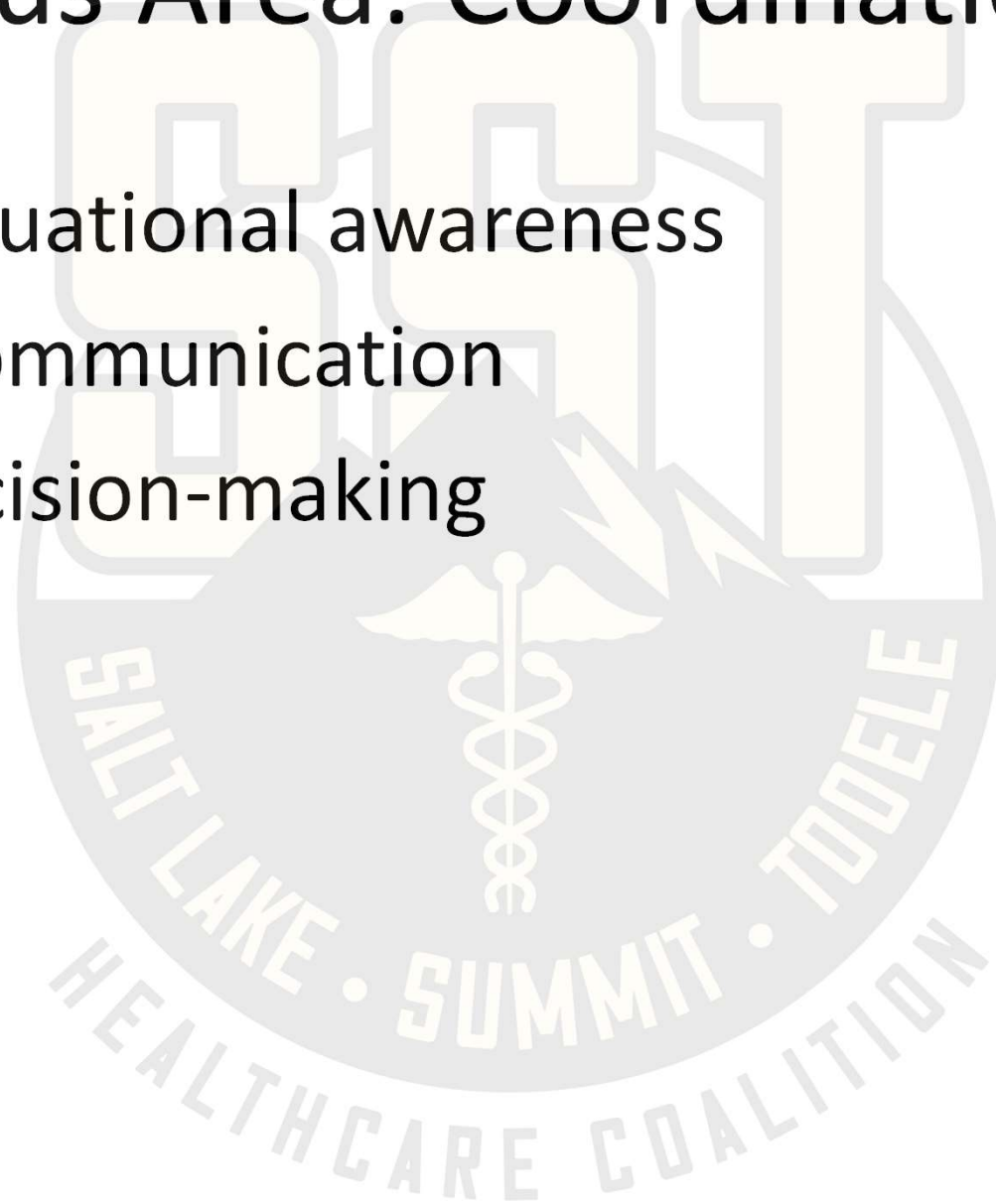
# Focus Area: Medical Surge

- Capacity strain
- Patient movement
- System coordination



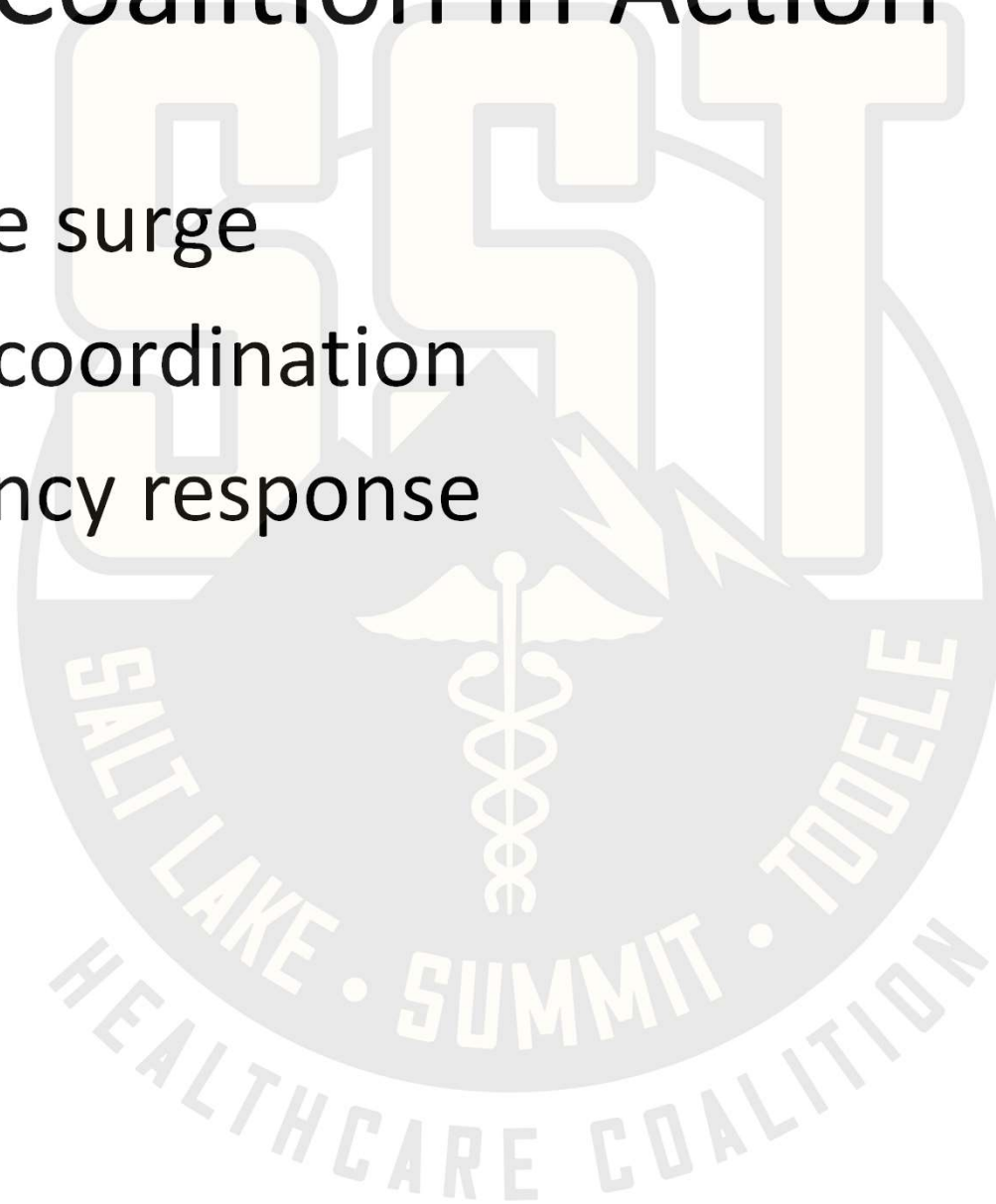
# Focus Area: Coordination

- Shared situational awareness
- Unified communication
- Faster decision-making



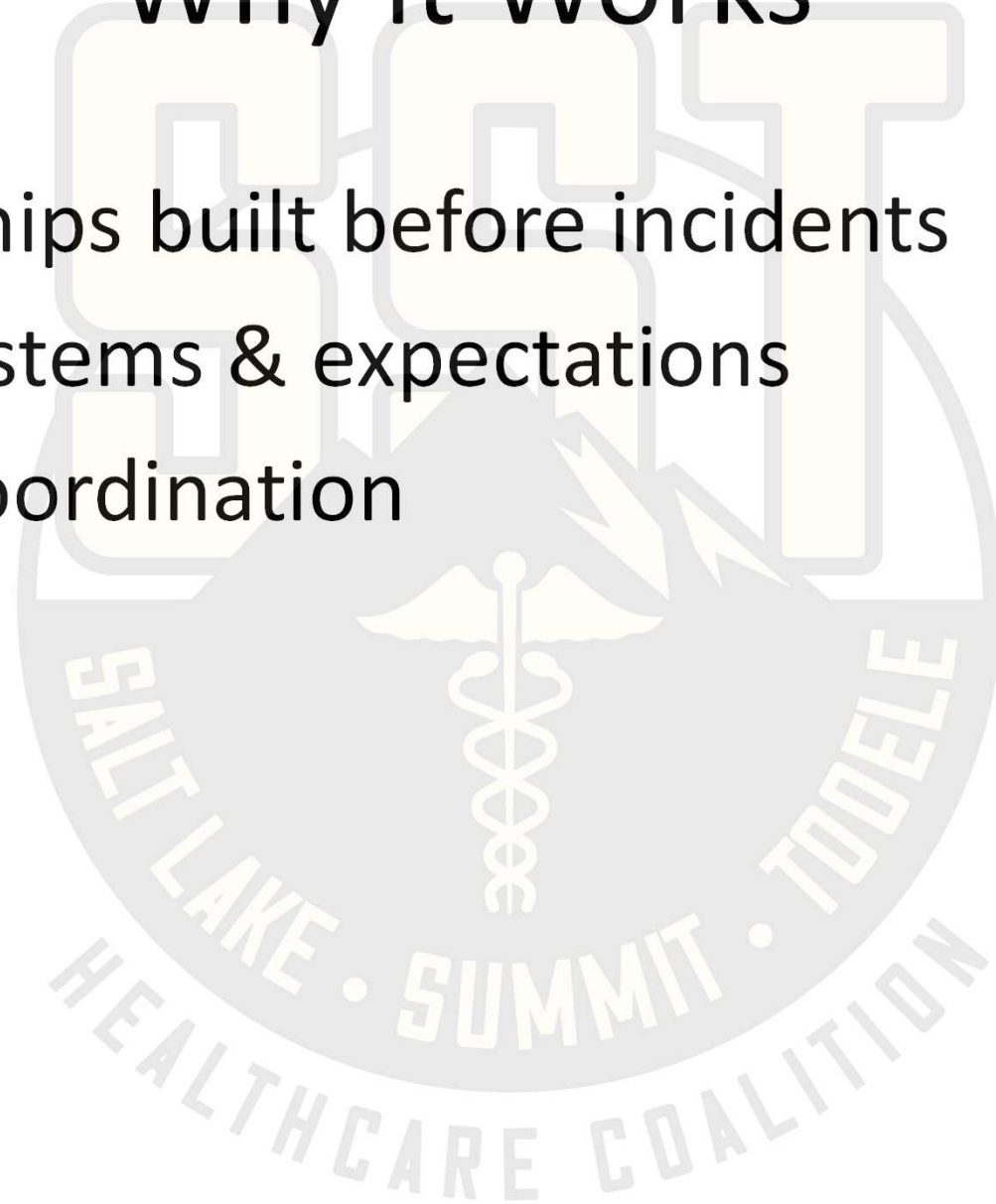
# Coalition in Action

- Healthcare surge
- Resource coordination
- Multi-agency response



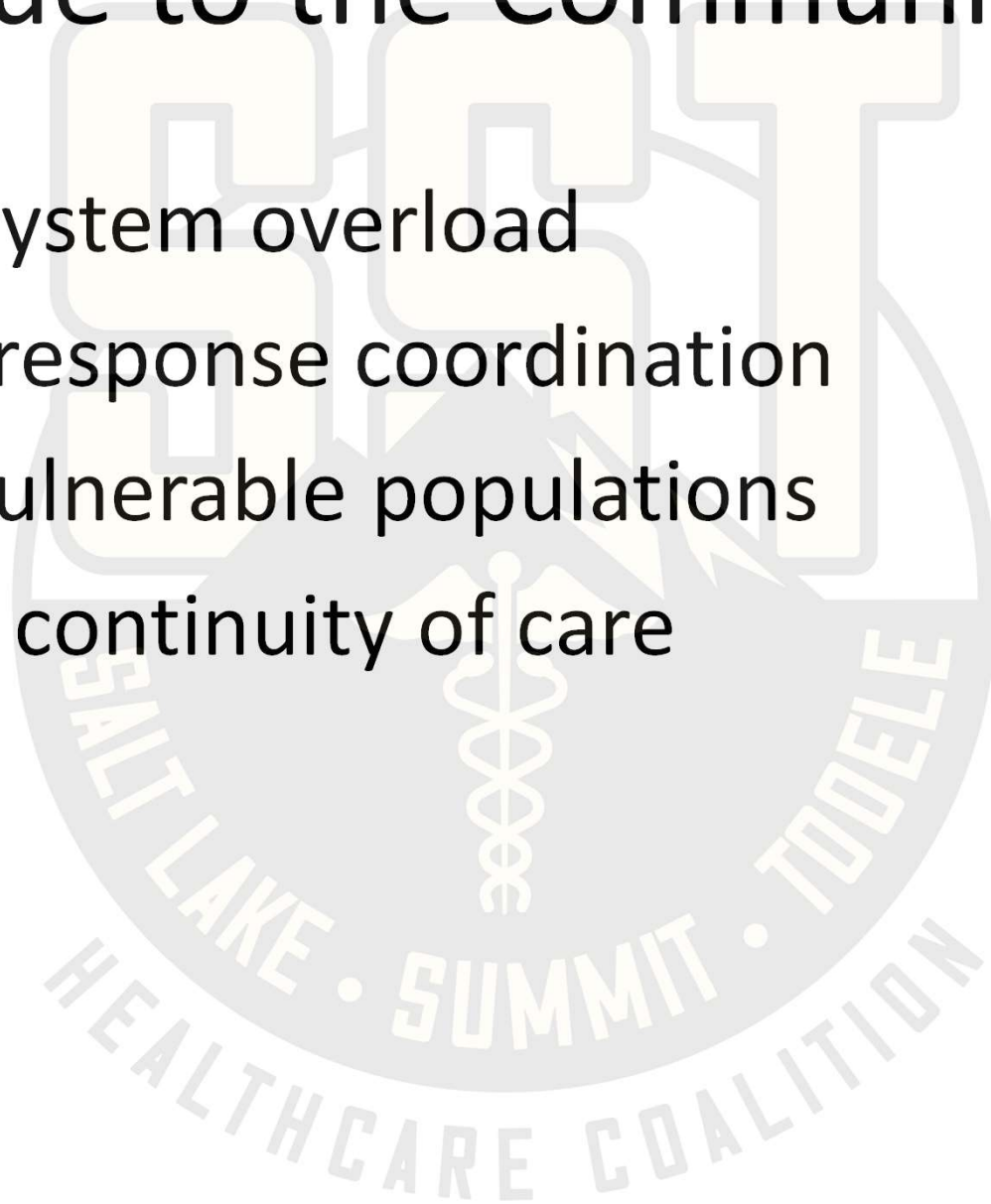
# Why It Works

- Relationships built before incidents
- Shared systems & expectations
- Trusted coordination



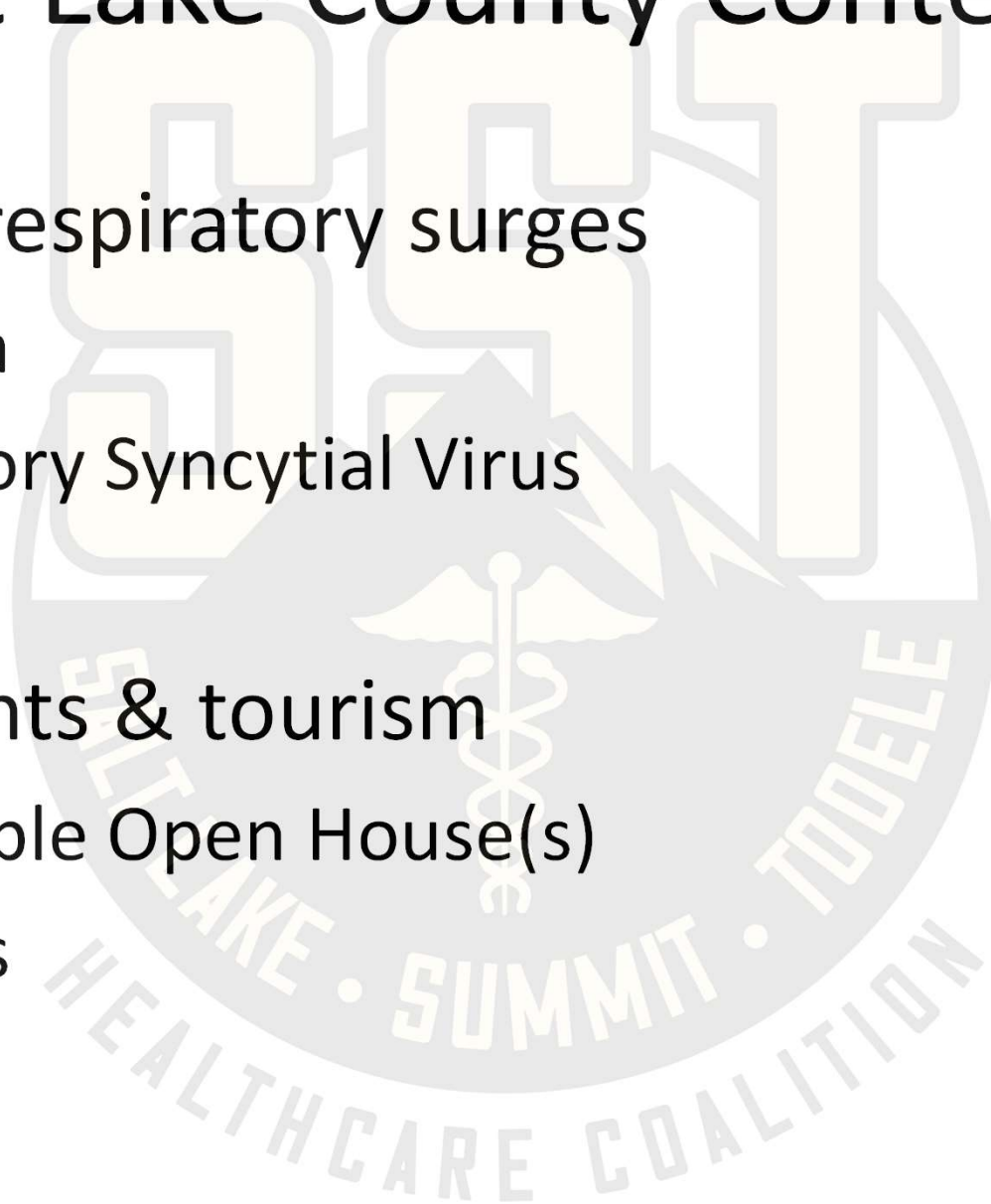
# Value to the Community

- Prevents system overload
- Improves response coordination
- Protects vulnerable populations
- Maintains continuity of care



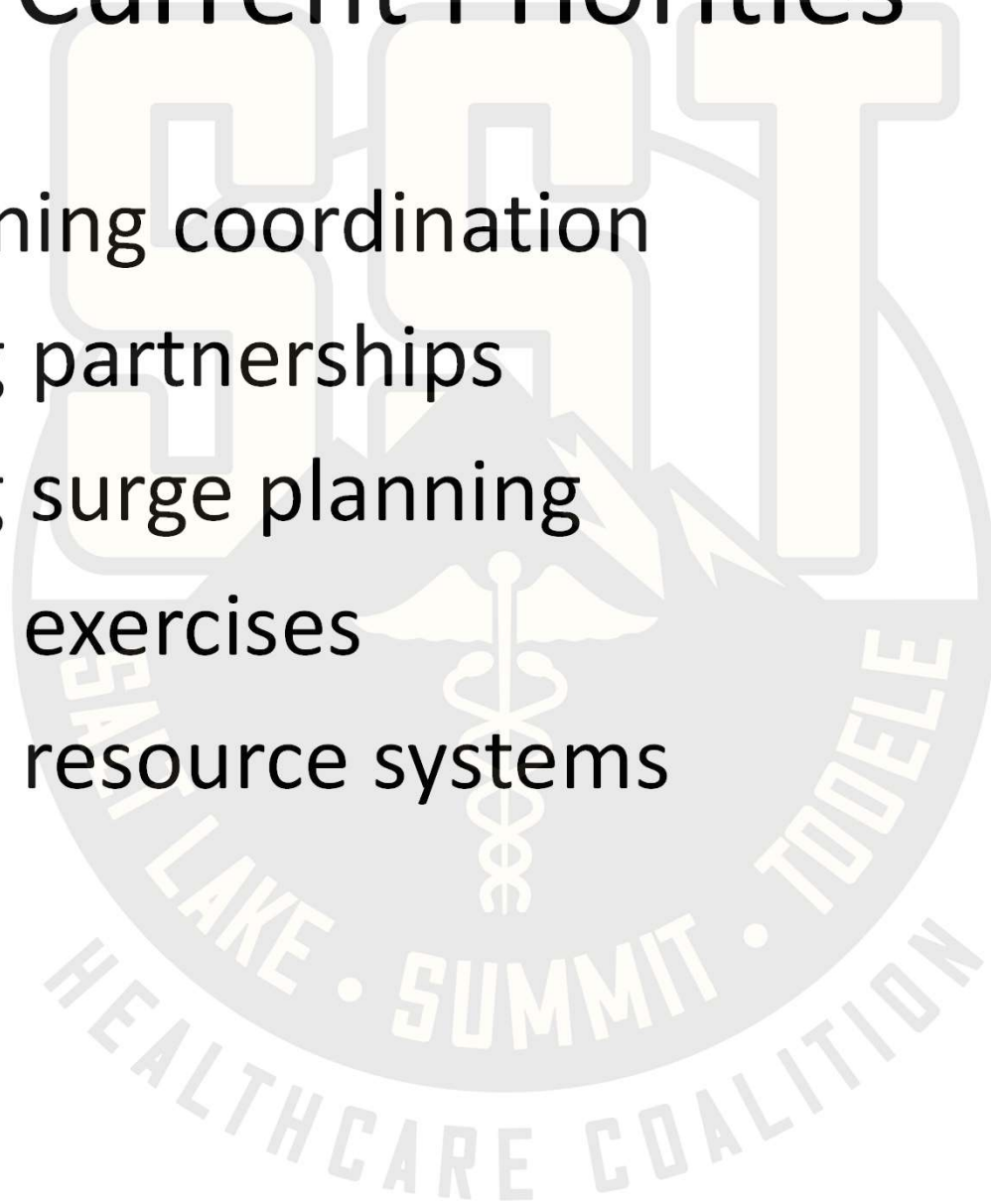
# Salt Lake County Context

- Seasonal respiratory surges
  - Influenza
  - Respiratory Syncytial Virus
  - COVID
- Large events & tourism
  - LDS Temple Open House(s)
  - Olympics



# Current Priorities

- Strengthening coordination
- Expanding partnerships
- Enhancing surge planning
- Training & exercises
- Improving resource systems



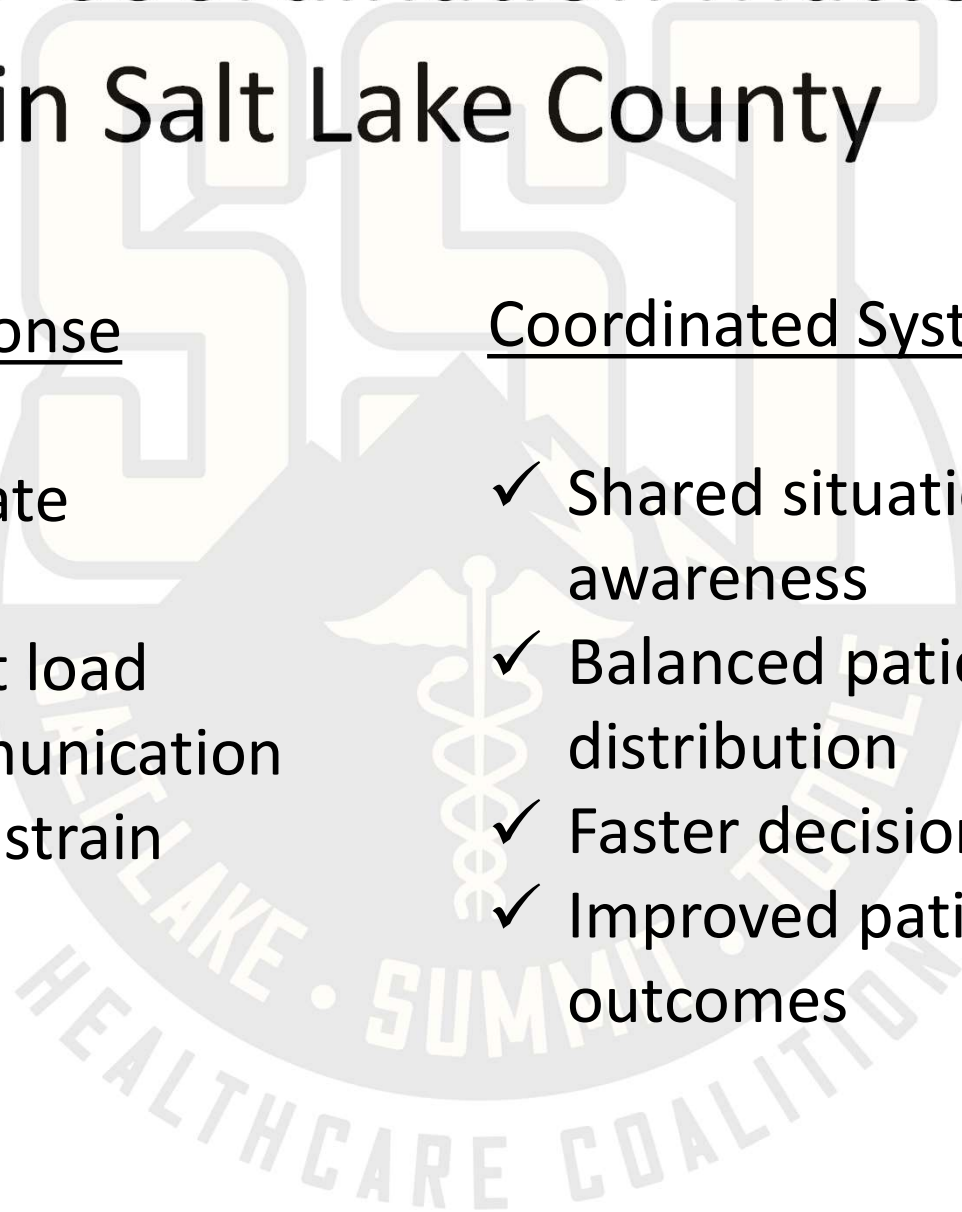
# Why Coordination Matters in Salt Lake County

## Fragmented Response

- × Hospitals operate independently
- × Uneven patient load
- × Delays in communication
- × Increased EMS strain

## Coordinated System

- ✓ Shared situational awareness
- ✓ Balanced patient distribution
- ✓ Faster decision-making
- ✓ Improved patient outcomes



# In Summary

- Healthcare systems can become quickly overwhelmed in an emergency
- A coordinated system is a resilient system
- Relationships built now result in stronger communication in an emergency





Questions?