

Introduction – 2027 Budget ~~Retreat~~ Session, Clinic or Roundtable

March 31, 2026



Change the name . . . Retreat won't work!

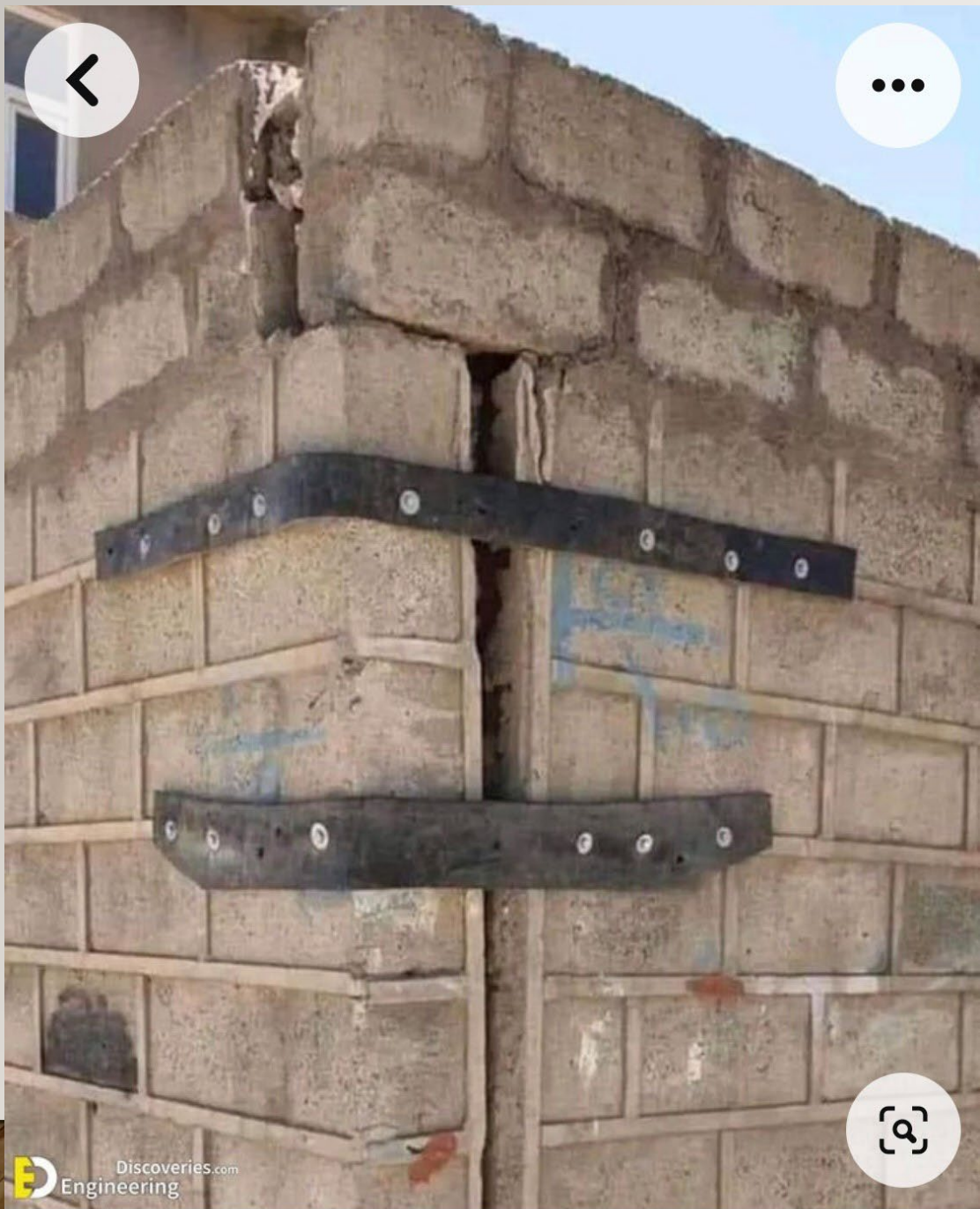
Synonyms: assembly, caucus, conclave, conference, convention, forum, get-together, huddle, parley, powwow, roundtable, seminar, summit, symposium

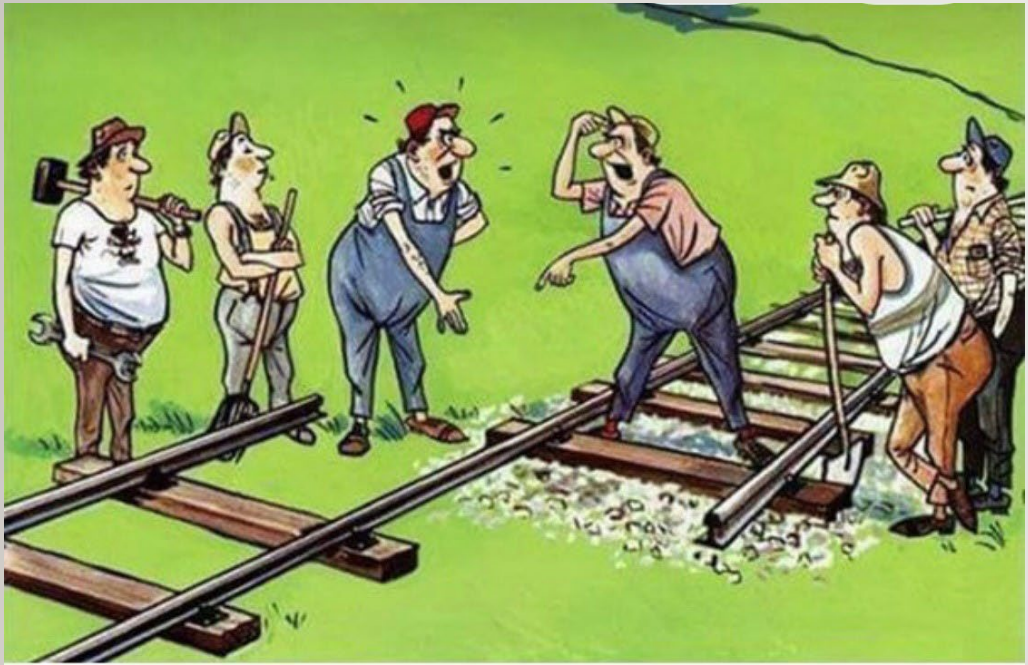
Session: A meeting or series of meetings

Clinic: A problem-solving meeting OR knowledge/skill acquisition

Roundtable: Discussion where members of equal standing share views on a specific topic

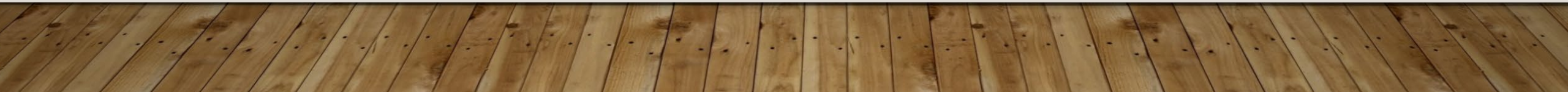






City of North Salt Lake Estimated Population

January 1, 2026









350 North

BRT

Station/
Post Office

High-Quality
Commercial
Redevelopment

Bamberger Trail Corridor

Multi-Family
Housing Helps
Activate the Edges
of Hatch Park

Mixed-Use with
Centralized
District Parking

Mixed Use
with Integrated
Parking,
Transitional
Residential to
Outer Edges
Creates Buffer
with Surrounding
Uses

Main Street

Highway 89

Courtyard Style
Multi-Family
Housing

Extended Hatch
Park

Orchard
Elementary
School

Center Street

Arts District

Transit
Hub

Center Street

Mixed Use with
Integrated Parking

Interstate 15

City Hall

Future Towne Plaza
Development

Mixed-Use

Pedestrian Sneakways/
Stairs Connect Town
Center and Transit Hub
to Development on
Higher Slopes



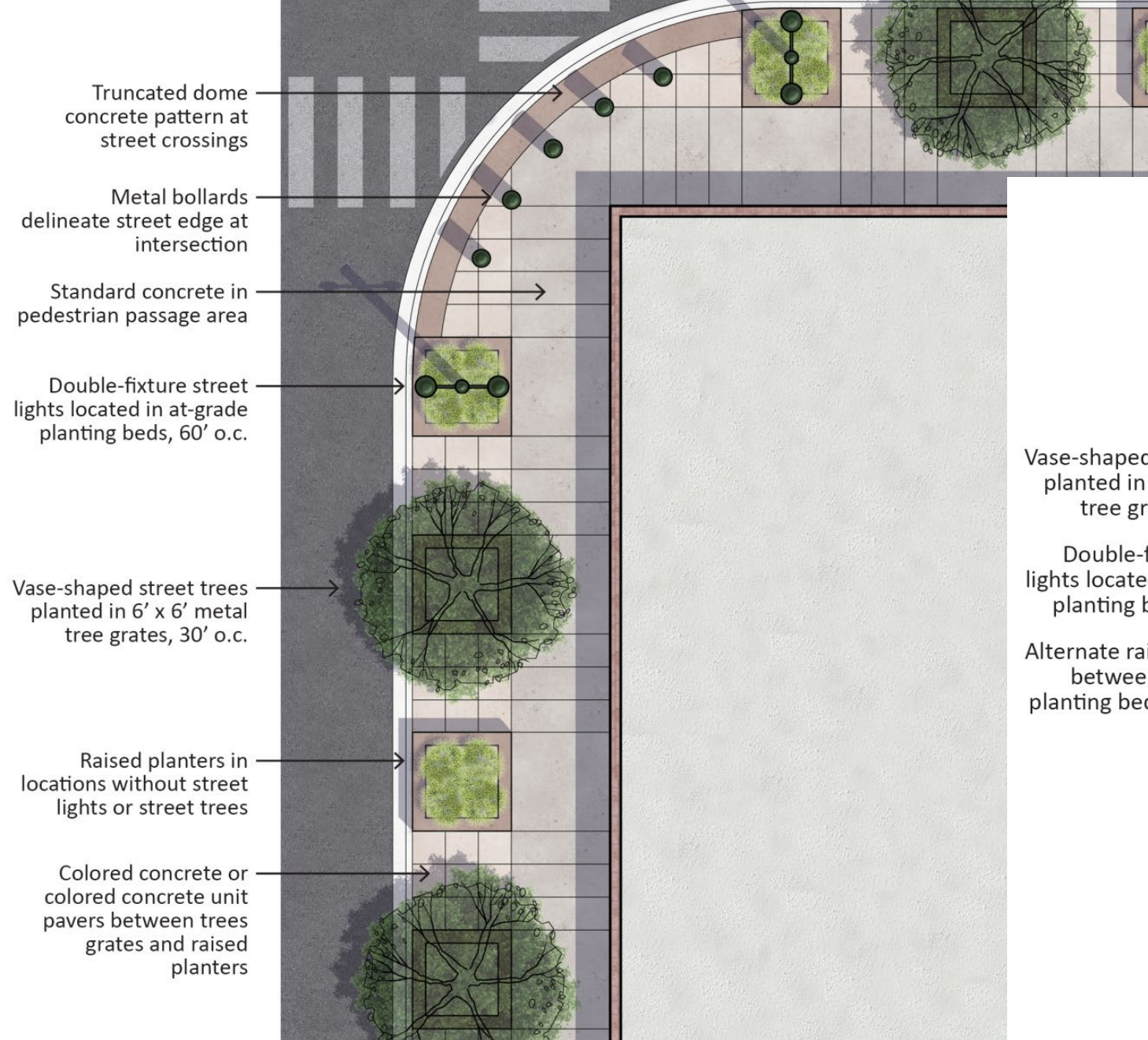
Example of on-street parallel and angled parking integrated into mixed-use development



Examples of shared street with special paving



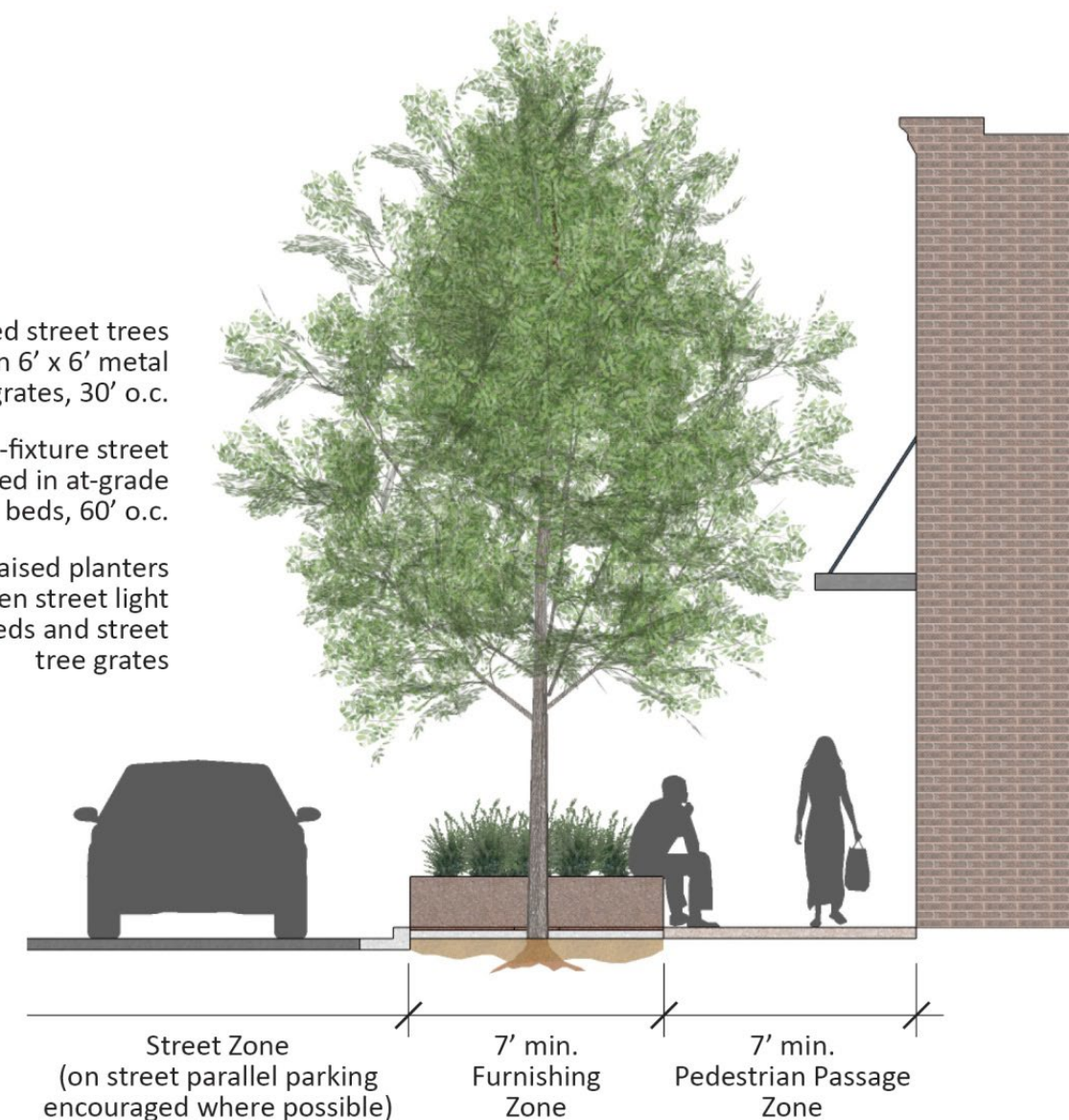




Vase-shaped street trees planted in 6' x 6' metal tree grates, 30' o.c.

Double-fixture street lights located in at-grade planting beds, 60' o.c.

Alternate raised planters between street light planting beds and street tree grates







Basketball Court



Interactive Play



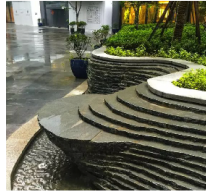
Sculptural Elements Along Sound Wall



Hillside Play



Deck Platform Overlooking Pond



Stepped Waterfall Feature



Modern Pond Feature



Banked Path Edge Adjacent to Slopes



Play Element Along Pickleball Courts



Meandering Stream Feature



Net Along Pond Feature



Shipping Container Stage



- SYMBOL
- 1 SOUTH PARK ENTRANCE
 - 2 PICKLEBALL COURTS WITH SEATING
 - 3 BENCHES
 - 4 GORG HULL-DELLA VERTICAL PLAY STRUCTURE
 - 5 TOT LOT (SPALL) PLAYGROUND
 - 6 ORNAMENTAL FENCE (BUFFER BETWEEN ROAD)
 - 7 PARKING
 - 8 MID-BLOCK CROSSWALK CONNECTION
 - 9 RESTROOM & PAVILION
 - 10 PLAZA - FARMERS' MARKET/EVENT SPACE
 - 11 PAVING PATTERNS (D REINFORCE ARCING PATTERN)
 - 12 TREES (4' TRITE GRATES)
 - 13 GROUP PAVILION
 - 14 PARK IDENTIFY SIGN
 - 15 BOARD WALK ACROSS POND
 - 16 MODERN STREAM FEATURE
 - 17 METAL GRATE OVER STREAM FEATURE
 - 18 GARDEN (ORNAMENTAL PLANTINGS)
 - 19 TABLE TOP CROSSWALK
 - 20 CITY CHRISTMAS TREE (CABLE STRUCTURE)
 - 21 BIKE LANE
 - 22 ONE/OBJECT / COMMERCIAL SPACE (ICE CREAM / SHOPS/DRINKS)
 - 23 SHIPPING CONTAINER STAGE
 - 24 TALL SCULPTURE
 - 25 FIRE FEATURE BUILT INTO WALLS
 - 26 SCULPTURAL BERMS
 - 27 WATER FALL FEATURE (RUNNEL DOWN BERMS)
 - 28 MODERN POND FEATURE
 - 29 SCULPTURE - CRANE NEST
 - 30 MAINTENANCE BUILDING
 - 31 DECK - PLATFORM OVERLOOKING POND (SEATING)
 - 32 SMALL PICNIC SHELTERS
 - 33 WALKING PATIO (TYP.)
 - 34 SCULPTURAL ELEMENTS / ART ALONG THE SOUND WALL
 - 35 FITNESS/PARKER
 - 36 MULTI-USERS OPEN LAWN
 - 37 SCULPTURE - FISH (CULFIELD 275 FT.)
 - 38 FULL SIZED BASKETBALL COURT
 - 39 DESTINATION PLAYGROUND INTEGRATED INTO HILLSIDE
 - 40 SHADE SAILS
 - 41 NORTH PARK ENTRANCE
 - 42 GATHERING SPACE
 - 43 PERSOLA SHADE STRUCTURE
 - 44 EXISTING RESIDENTIAL PROPERTY
 - 45 FUTURE (DOT) SOUNDWALL
 - 46 EXISTING CITY HALL

Total Parking: 222 Stalls



Trees in Plaza



Trees Grates (in plaza)



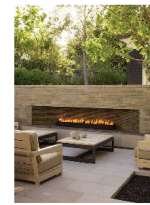
Arched Pergola (in plaza)



Bridge/Boardwalk



Fire Place/Outdoor Seating



Garden / Plantings



Sculptural Focal Point



Hatch Park

50 W Center St.
North Salt Lake, UT

G. BROWN: DESIGN INC
SITE LANDSCAPE ARCHITECTS

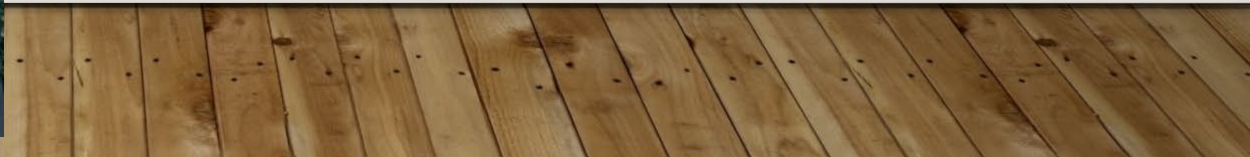
678 East Vine Street, Ste 10

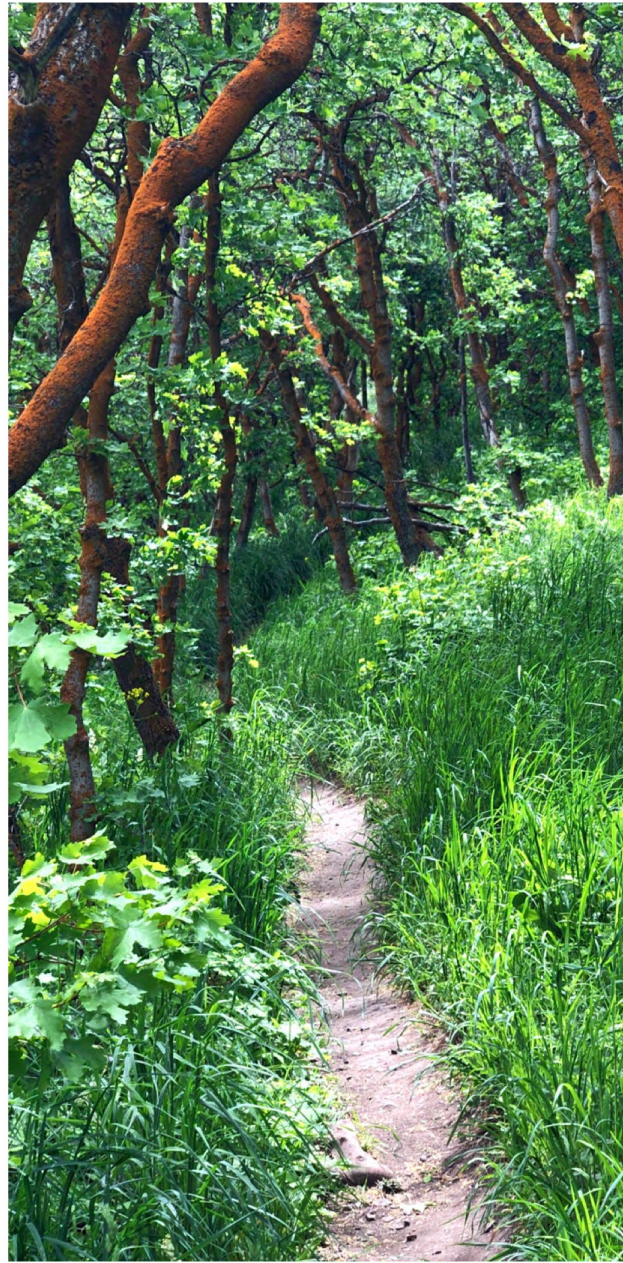
I PROPOSE WE FORM A COMMITTEE
TO REVIEW OUR COMMITTEES.



Hagen







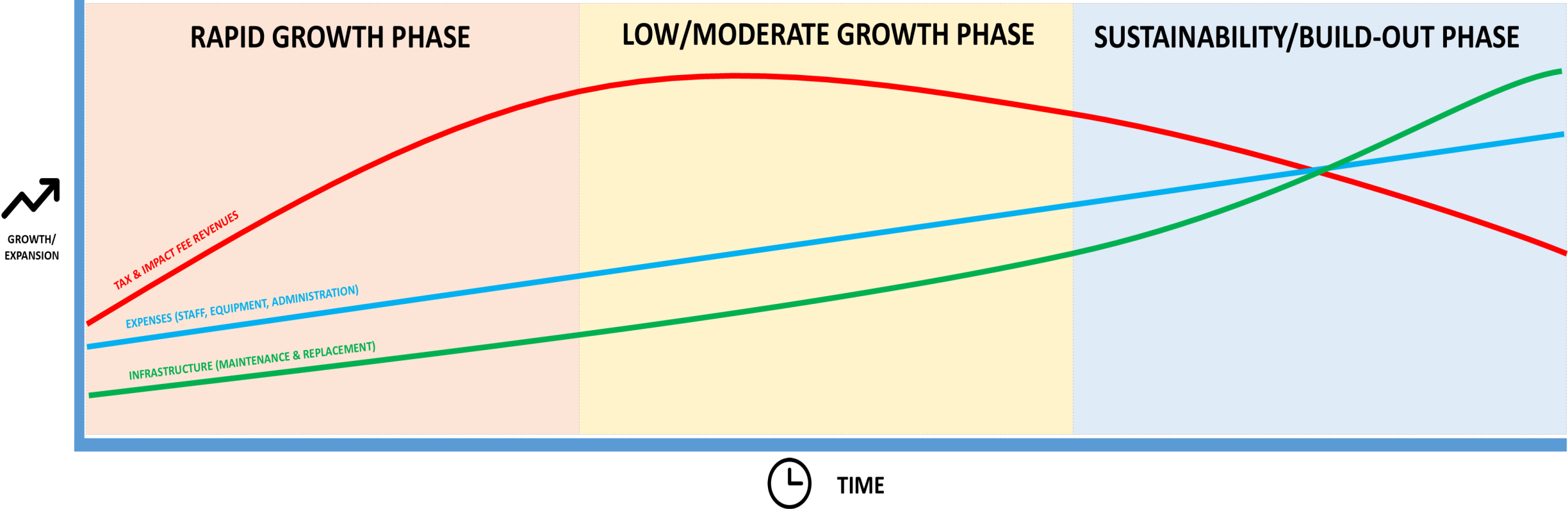




Condition of the City - Strengths

- ✓ Strong, stable, diverse revenues
- ✓ Good infrastructure maintenance systems
- ✓ Good cash reserves and savings for capital projects
- ✓ Manageable near-term challenges
- ✓ Good underlying systems to provide sustainable levels of service
- ✓ Some growth, but moving towards sustainable/build out-phase

Phases of the City (2024)



Condition of the City - Challenges

- ✓ Expanding infrastructure maintenance – water lines, streets, parks, storm drain, trails & sidewalks
- ✓ Long-term challenges: infrastructure replacement
- ✓ Growth in costs - Inflation
- ✓ City wants to continue to improve in active transportation, parks and trail expansion, use of technology
- ✓ Constant upgrade to systems to prepare for future