



Date: March 17, 2026

# Update on activity at Utah FORGE



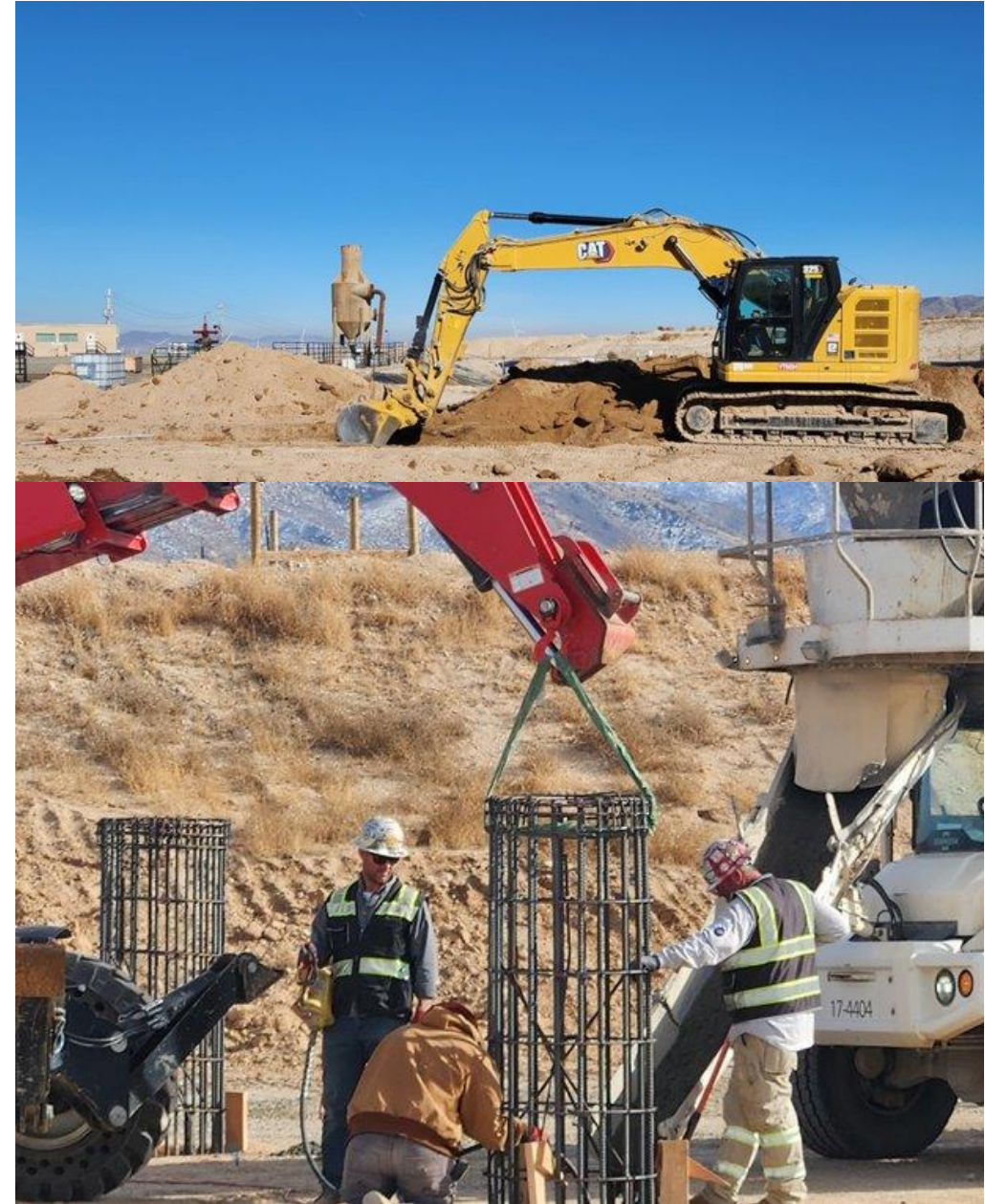
# Current Site Activities

- Building surface facility for circulation testing (commissioning late March)
  - No geothermal power generation
  - Cooling tower for reducing temperature to that expected for injection in commercial operations



# Upcoming Site Activities

- Conduct circulation for 4+ months (starting in April)
  - Duration dependent on observation of thermal breakthrough
  - Seismic and geochemical monitoring
  - Will target up-time expected for commercial operations (95%+)
- Evaluate circulation results to determine placement of new well 16C(78)-32
- Drill well 16C and stimulate wells 16A, 16B, 16C in preparation for longer term circulation



# Impact of Utah FORGE



Beaver County is now the global epicenter of Enhanced Geothermal Systems research and development.



Utah FORGE developed and tested foundational technologies that de-risked investment in commercial Enhanced Geothermal Systems.



Utah FORGE directly infused Beaver County's economy with \$660,000 from 2024 to present, additional significant investments through 2028.



The outreach team is a regular presence in local schools. K-12 education has benefited from over 100 Utah FORGE team school visits in rural communities.



Over 133 terabytes of free data released into the public domain for research and commercial use.

# Outreach Activities

- Presented to sixth graders at all Beaver County Schools - over 100 students
- Launched the Beaver County 6<sup>th</sup> grade poster contest - winners announced in April
- Started planning a fieldtrip to Beaver County as part of Utah FORGE workshop; reserved Milford City Hall Community Room
- Secured our spot at the Beaver County Fair

