

Maria Montessori Academy
Policy: Artificial Intelligence Policy
Approved: _____

Purpose

Maria Montessori Academy (the “School”) acknowledges the benefits of integrating artificial intelligence (“AI”) into public education and recognizes AI’s potential to foster innovation, improve student outcomes, and provide support to educators in delivering more effective and personalized learning experiences to students.

The purpose of this policy is to allow the appropriate and responsible use of AI at the School. This policy applies to students, teachers, staff, and administrators of the School, as well as to third parties who develop, implement, or interact with AI technologies used in the School.

Policy

The use and integration of AI at the School shall align with the Utah State Board of Education’s AI Framework. Accordingly, AI may be used to improve student learning, teacher effectiveness, and School operations. However, AI shall not be used to bully, harass, or intimidate; cheat; or plagiarize. All use of AI at the School shall comply with School policy and all applicable state and federal data privacy and security laws and regulations.

School administration shall ensure that the School takes a balanced approach to AI use. While AI can enhance student learning, students should not become overly dependent on AI in their education at the School. Similarly, while the use of AI can improve teaching and help reduce educators’ workloads, it should not replace the essential role of teachers in instructing, guiding, and supporting students on a personal, human level.

The Director shall establish administrative procedures regarding the use of specific AI tools and technologies at the School, including within classrooms. As an alternative to establishing administrative procedures, or in addition thereto, the Director may permit teachers to create their own classroom AI policies. Any classroom AI policy developed by a teacher shall be consistent with this policy and shall be approved by the Director or his/her designee.

The School shall review this policy regularly to ensure that it continues to meet its needs.



Maria Montessori Academy
Policy: Fee Waiver Policy
Approved: February 9, 2021
Reapproved: March 8, 2022
Reapproved: February 21, 2023
Reapproved: August 17, 2023
Reapproved: September 26, 2024
Reapproved:

Purpose

Maria Montessori Academy (the “School”) must abide by the Utah State Board of Education rules which direct the School’s Board of Directors (the “Board”) to implement a policy regarding student fees in the event the School elects to charge such fees. The purpose of this policy is to provide educational opportunities for all students. This allows the School to establish a reasonable system of fees, while prohibiting practices that would exclude those unable to pay from participation in School-sponsored activities.

Policy

Under the direction of the Board, the School’s Principal (the “Principal”) is authorized to administer this policy and is directed to do so fairly, objectively, and without delay, and in a manner that avoids stigma and unreasonable burdens on students or parents/guardians.

Definitions

“Common education expense”

- (a) means an expense the School incurs that is related to the delivery of instruction for all courses, unrelated to a specific course, program, or activity; and
- (b) includes the employment of educators and staff, the provision of capital facilities, and operation and maintenance costs.

“Course” or “class”

- (a) means an activity, a course, or a program that the School:
 - (i) intends to deliver instruction;
 - (ii) provides, sponsors, or supports; and
 - (iii) conducts primarily during school hours.
- (b) includes a course in which a student is required to enroll as a condition of participation in a separate extracurricular activity.

“Discretionary project” means a project that a student completes in lieu of or in addition to a required classroom project in accordance with Section 53G-7-503.

“Extracurricular activity”

- (a) means an activity or a program that:
 - (i) is not a course; and
 - (ii) the School provides, sponsors, or supports.
- (b) does not include a noncurricular club as defined in Section 53G-7-701.

“Fee” means a charge, expense, deposit, rental, or payment:

- (a) regardless of how the School terms, describes, requests, or requires the charge, expense, deposit, rental, or payment, directly or indirectly;
- (b) in the form of money, goods, or services; and
- (c) that is a condition to a student’s full participation in or admission to an activity, course, or program that the School provides, sponsors, or supports.

“Fee” includes:

- (a) payments to a third party that provides a part of a School activity, class, or program; and
- (b) a fine other than a fine described below.

“Fee” does not include:

- (a) a student fine that the School approves for:
 - (i) failing to return School property;
 - (ii) losing, wasting, or damaging private or School property through intentional, careless, or irresponsible behavior, including defacing or damaging School property as described in Utah Code 53G-8-212; or
 - (iii) improper use of School property, including a parking violation;
- (b) a payment for School breakfast or lunch;
- (c) a deposit that:
 - (i) is a pledge securing the return of School property; and
 - (ii) the School refunds upon the return of School property;
- (d) a charge for insurance, unless the insurance is required for a student to participate in an activity, course, or program; or
- (e) money or another item of monetary value that a student or the student’s family raises through fundraising.

“Fee course” means a course that is not a non-fee course.

“Instructional equipment”

- (a) means an activity-, course-, or program-related tool that:
 - (i) a student is required to use as part of an activity, course, or program in a secondary school; and
 - (ii) becomes the property of the student upon exiting the activity, course, or program.

- (b) does not include School equipment, an instructional supply, or a personal student supply for a secondary student.

“Instructional supply”

- (a) means a non-reusable or a consumable material or supply that is necessary to use, expend, or deplete as a component or element of an activity, course, or program in a secondary school.
- (b) does not include a personal student supply for a secondary student.

“Non-fee course” means a course that results in course credit or a course grade within the core standards the USBE establishes under Section 53E-4-202 and other statutory requirements for:

- (a) English language arts;
- (b) health education;
- (c) mathematics;
- (d) science; and
- (e) social studies

“Non-waivable charge” means a cost, payment, or expenditure that:

- (a) is a personal discretionary charge or purchase, including:
 - (i) a charge for insurance, unless the insurance is required for a student to participate in an activity, class, or program;
 - (ii) a charge for college credit:
 - (A) from an institution of higher education; or
 - (B) for post-secondary related courses; or
 - (iii) except when requested or required by the School, a charge for a personal consumable item such as a yearbook, class ring, letterman jacket or sweater, or other similar item;
- (b) is subject to sales tax as described in Utah State Tax Commission Publication 35, Sales Tax Information for Public and Private Elementary and Secondary Schools; or
- (c) by Utah Code, federal law, or State Board of Education rule is designated not to be a fee, including:
 - (i) a school uniform as provided in Utah Code § 53G-7-801;
 - (ii) a school lunch; or
 - (iii) a charge for a replacement for damaged or lost School equipment or supplies.

“Personal student supply”

- (a) means, for a secondary student, an object, tool, material, or supply that:
 - (i) is the personal property of the student;
 - (ii) regardless of the use of the supply in the instructional process, individuals not enrolled in the course or activity also commonly purchase and use;and

- (iii) has a high probability of regular use in activities other than School-sponsored activities.
- (b) includes pencils, papers, notebooks, crayons, scissors, and basic clothing.

"Provided, sponsored, or supported by the School"

- (a) means an activity, class, program, club, camp, clinic, or other event that:
 - (i) is authorized by the School; or
 - (ii) satisfies at least one of the following conditions:
 - (A) the activity, class, program, club, camp, clinic, or other event is managed or supervised by the School, or a School employee in the employees School employment capacity;
 - (B) the activity, class, program, club, camp, clinic, or other event uses, more than inconsequentially, the School's facilities, equipment, or other School resources; or
 - (C) the activity, class, program, club, camp, clinic, or other event is supported or subsidized, more than inconsequentially, by public funds, including the School's activity funds or minimum school program dollars.
- (b) does not include an activity, class, or program that meets the criteria of a noncurricular club as described in Title 53G, Chapter 7, Part 7, Student Clubs.

"Provision in lieu of fee"

- (a) means an alternative to fee payment; and
- (b) may include a plan under which fees are paid in installments or under some other delayed payment arrangement or a service in lieu of fee payment agreement.

"Requested or required by the School as a condition to a student's participation" means something of monetary value that is impliedly or explicitly mandated or necessary for a student, parent, or family to provide so that a student may:

- (a) fully participate in school or in a School activity, class, or program;
- (b) successfully complete a School class for the highest grade; or
- (c) avoid a direct or indirect limitation on full participation in a School activity, class, or program, including limitations created by:
 - (i) peer pressure, shaming, stigmatizing, bullying, or the like; or
 - (ii) withholding or curtailing any privilege that is otherwise provided to any other student.

"School activity clothing" means special shoes or items of clothing that:

- (a) meet specific requirements, including requesting a specific brand, fabric, or imprint;
- (b) the School requires a student to provide and to wear for an activity-, course-, or program-related activity; and

(c) that the student rents while participating in the activity, or become the property of the student upon exiting the activity, course, or program.

“School activity clothing” does not include:

- (a) a school uniform; or
- (b) clothing that is commonly found in students’ homes.

“School equipment” means a machine, equipment, facility, or tool that:

- (a) is durable;
- (b) is reusable;
- (c) a secondary school owns; and
- (d) a student uses as part of an activity, course, or program in a secondary school.

“Something of monetary value”

- (a) means a charge, expense, deposit, rental, fine, or payment, regardless of how the payment is termed, described, requested or required directly or indirectly, in the form of money, goods or services; and
- (b) includes:
 - (i) charges or expenditures for a School field trip or activity trip, including related transportation, food, lodging, and admission charges;
 - (ii) payments made to a third party that provide a part of a School activity, class, or program;
 - (iii) classroom textbooks, supplies or materials;
 - (iv) charges or expenditures for school activity clothing; and
 - (v) a fine, except for a student fine specifically approved the School for:
 - (A) failing to return School property;
 - (B) losing, wasting, or damaging private or School property through intentional, careless, or irresponsible behavior; or
 - (C) improper use of School property, including a parking violation.
- (c) does not include a payment or charge for damages, which may reasonably be attributed to normal wear and tear.

“Textbook”

- (a) means instructional material necessary for participation in an activity, course, or program, regardless of the format of the material;
- (b) includes:
 - (i) a hardcopy book or printed pages of instructional material, including a consumable workbook; or
 - (ii) computer hardware, software, or digital content; and
- (c) does not include School equipment, instructional equipment, or instructional supplies.

“Waiver” means a full release from:

- (a) a requirement to pay a fee; and

(b) any provision in lieu of fee payment.

General School Fees Provisions

The School may only charge a fee for an activity, class, or program provided, sponsored, or supported by the School that is noticed and authorized by School policies and state law.

If the School imposes a fee:

- (a) the fee shall be directly related to the expense incurred by the School in providing for a student the activity, course, or program for which the School imposes a fee;
- (b) the fee shall be equal to or less than the expense described immediately above; and
- (c) the School may not impose an additional fee or increase a fee to supplant or subsidize another fee that the School is prohibited from charging, including the normal expense of delivering instruction in a course.

The School may not sell textbooks or otherwise charge a fee for textbooks, except for a textbook used for a concurrent enrollment, International Baccalaureate, or Advanced Placement course.

All fees are subject to the fee waiver requirements of this policy.

The School shall not charge a fee that is general in nature and for a service or good that does not have a direct benefit to the student paying the fee. In addition, the School may not charge a fee for a common education expense.

Beginning for the 2026-2027 school year, the School shall, with respect to awarding secondary students credit toward graduation, ensure that it has at least one option for each graduation requirement that:

- (a) fulfills the graduation requirement; and
- (b) does not require the payment or waiver of any fee.

However, the restriction above does not apply to the School if the School only offers one of the following for a given graduation requirement:

- (a) an Advanced Placement course;
- (b) an International Baccalaureate course; or
- (c) a concurrent enrollment course, as described in Section 53E-10-302.

Fees for Classes & Activities During the Regular School Day

Fees for Students in Kindergarten through Sixth Grade

The School may not charge a fee in kindergarten through sixth grade for materials, textbooks, supplies, or for any class or regular school day activity (except for discretionary projects), including assemblies and field trips.

Elementary students cannot be required to provide their own student supplies. However, the School or teacher may provide to a student's parent a suggested list of student supplies for use during the regular school day so that a parent or guardian may furnish, only on a voluntary basis, those supplies for student use. The list provided to a student's parent or guardian must include the following language before identifying the supplies:

"NOTICE: THE ITEMS ON THIS LIST WILL BE USED DURING THE REGULAR SCHOOL DAY. THEY MAY BE BROUGHT FROM HOME ON A VOLUNTARY BASIS, OTHERWISE, THEY WILL BE FURNISHED BY THE SCHOOL."

The School may charge a fee to a student in grade six if all of the following are true:

- (a) the School has students in any of the grades seven through twelve;
- (b) the School follows a secondary model of delivering instruction to the School's grade six students; and
- (c) The School annually provides notice to parents that the School will collect fees from grade six students and that the fees are subject to waiver.

Fees for Students in Seventh through Ninth Grade

Fees may be charged in grades 7-9 in connection with an activity, class, or program provided, sponsored, or supported by the School that takes place during the regular school day if the fee is noticed and approved as provided in R277-407 and is allowed to be charged by state law. All such fees are subject to waiver. In addition, if an established or approved class requires payment of fees or purchase of items in order for students to fully participate and to have the opportunity to acquire skills and knowledge required for full credit and highest grades, the fees or costs for the class are subject to waiver.

In project related courses, projects required for course completion will be included in the course fee.

Secondary students may be required to provide their own student supplies, subject to the fee waiver requirements of this policy.

The School may charge students in grades 7-9 a fee for:

- (a) relating to a non-fee course or a fee course, for:
 - (i) instructional equipment;
 - (ii) a School field trip or activity trip or performance, including related transportation, food, lodging, and admission charges or participation fees;
 - (iii) School activity clothing;

- (iv) a discretionary project as described herein; or
 - (v) a competency remediation program in accordance with Section 53G-9-803;
- (b) an expense related to a course, activity, or program that is a fee course, including:
- (i) instructional supplies;
 - (ii) the life-cycle replacement costs for School equipment directed related to the fee course;
 - (iii) a music instrument rental;
 - (iv) licensing fees for fine arts intellectual property; or
 - (v) participating in a driver education course described in Section 53G-10-503;
- (c) an expense related to the following post-secondary-related courses, including tuition, college credit, an exam, or a textbook:
- (i) an Advanced Placement course;
 - (ii) an International Baccalaureate course; or
 - (iii) a concurrent enrollment course, as described in Section 53E-10-302.

If the School charges fees for a fee course or a non-fee course, such fees are limited to those described above.

Fees for Optional Projects

The School may require students at any grade level to provide materials or pay for an additional discretionary project if the student chooses a project in lieu of, or in addition to a required classroom project. A student may not be required to select an additional project as a condition to enrolling, completing, or receiving the highest possible grade for a course. The School will avoid allowing high cost additional projects, particularly when authorizing an additional discretionary project results in pressure on a student by teachers or peers to also complete a similar high cost project.

Fees for Activities Outside of the Regular School Day

Fees may be charged in all grades for any School-sponsored activity that does not take place during the regular school day if the fee is approved as provided in this policy and is allowed by state law and if participation in the activity is voluntary and does not affect the student's grade or ability to participate fully in any course taught during the regular school day. Fee waivers are available for such fees.

Activities that use the School facilities outside the regular school day but are not provided, sponsored, or supported by the School (e.g., programs sponsored by the parent organization and/or an outside organization) may charge for participation, and fee waivers are not available for these charges.

An activity, class, or program that is provided, sponsored, or supported by the School outside of the regular School day or School year calendar is subject to this policy and state law regardless of the time or season of the activity, class, or program.

Fees for Extracurricular Activities

The School may charge students in grades 7-9 fees for an extracurricular activity. The School may also charge students in grades K-6 fees for an extracurricular activity if it takes place outside of the regular school day and meets the other requirements described above. A fee for an extracurricular activity for students in grades 7-9 may include the life-cycle replacement costs for School equipment directly related to the extracurricular activity.

A fee related to an extracurricular activity may not exceed the maximum fee amounts for the extracurricular activity adopted by the Board, as provided below.

Other Miscellaneous Fees

Fees for Adult Education

The School may charge students in grades 7-9 fees for an adult education course in accordance with Section 53E-10-202.

Fees for Remediation Programs

The School may charge students in grades 7-9 fees to participate in the School's remediation programs.

The School may not charge students in grades K-6 fees to participate in the School's remediation programs.

Fees for Charter School Application Processing

The School may charge students in grades 7-9 a fee for charter school application processing in accordance with Section 53G-6-503.

Fee Schedule

The Board will approve a Fee Schedule at least once each year on or before June 1. The Fee Schedule will establish the maximum fee amount per student for each activity and the maximum total aggregate fee amount per student per school year. No fee may be charged or assessed related to an activity, class, or program provided, sponsored, or supported by the School, including for a course or extracurricular activity, unless the fee has been set and approved by the Board, is equal to or less than the established maximum fee amount for the activity, and is included in the approved Fee Schedule.

The School will encourage public participation in the development of the Fee Schedule and related policies.

Before approving the School's Fee Schedule, the School will provide an opportunity for the public to comment on the proposed Fee Schedule during a minimum of two public Board meetings. In addition to the standard notice of Board meetings under the Open and Public Meetings Act, the School will provide notice of these Board meetings using the same form of communication regularly used by the administration to communicate with parents.

After the Fee Schedule is adopted, the Board may amend the Fee Schedule using the same process.

Maximum Fee Amounts

In connection with establishing the Fee Schedule, the Board will establish a per student annual maximum fee amount that the School may charge a student for the student's participation in all courses, programs, and activities provided, sponsored, or supported by the School for the year. This is a maximum total aggregate fee amount per student per School year.

The Board may establish a reasonable number of activities, courses, or programs that will be covered by the annual maximum fee amount.

Notice to Parents

The Principal will annually provide written notice of the School's Fee Schedule and Fee Waiver Policy to the parent or guardian of each student in the School by ensuring that a written copy of the School's Fee Schedule and Fee Waiver Policy is included with all registration materials provided to potential or continuing students each year. The Fee Schedule shall clearly identify any fee for each activity, course, or program alongside the description of the activity, course, or program.

The School will also post the following on its website each school year:

- (a) The School's Fee Schedule, including maximum fee amounts, and Fee Waiver Policy;
- (b) The School's fee waiver application;
- (c) The School's fee waiver decision and appeals form; and
- (d) The School's fee notice(s) for families.

Donations

The School may not request or accept a donation in lieu of a fee from a student or parent unless the activity, class, or program for which the donation is solicited will

otherwise be fully funded by the School and receipt of the donation will not affect participation by an individual student.

A donation is a fee if a student or parent is required to make the donation as a condition to the student's participation in an activity, class, or program.

The School may solicit and accept a donation or contribution in accordance with the School's policies, including the Donation and Fundraising Policy, but such requests must clearly state that donations and contributions by a student or parent are voluntary.

If the School solicits donations, the School: (a) shall solicit and handle donations in accordance with policies and procedures established by the School; and (b) may not place any undue burden on a student or family in relation to a donation.

Fee Collection

The School may pursue reasonable methods for obtaining payment for fees and for charges assessed in connection with a student losing or willfully damaging school property.

The School may not exclude students from school, an activity, a class, or a program that is provided, sponsored, or supported by the School during the regular school day; refuse to issue a course grade; or withhold official student records, including written or electronic grade reports, class schedules, diplomas, or transcripts, as a result of unpaid fees.

The School may withhold the official student records of a student responsible for lost or damaged School property consistent with Utah Code § 53G-8-212 until the student or the student's parent has paid for the damages, but may not withhold a student's records required for student enrollment or placement in a subsequent school.

A reasonable charge may be imposed by the School to cover the cost of duplicating, mailing, or transmitting transcripts and other school records. No charge may be imposed for duplicating, mailing, or transmitting copies of school records to an elementary or secondary school in which the student is enrolled or intends to enroll.

Consistent with Utah Code § 53G-6-604, the School will forward a certified copy of a transferring student's record to a new school within 30 days of the request, regardless of whether the student owes fees or fines to the School.

Students shall be given notice and an opportunity to pay fines prior to withholding issuance of official written grade reports, diplomas and transcripts. If the student and the student's parent or guardian are unable to pay for damages or if it is determined by the School in consultation with the student's parents that the student's interests would not be served if the parents were to pay for the damages, then the School may provide

for a program of voluntary work for the student in lieu of the payment. A general breakage fee levied against all students in a class or school is not permitted.

Budgeting and Spending Revenue Collected Through Fees

The School will follow the general accounting standards described in Rule R277-113 for treatment of fee revenue.

The School will establish a spend plan for the revenue collected from each fee charged. The spend plan will (a) provide students, parents, and employees transparency by identifying a fee's funding uses; (b) identify the needs of the activity, course, or program for the fee being charged and include a list or description of the anticipated types of expenditures, for the current fiscal year or as carryover for use in a future fiscal year, funded by the fee charged.

School Fee Collections & Accounting Procedures

It is the responsibility of the Principal to ensure that all student fees collected are in compliance with the Fee Schedule and applicable financial policies and procedures.

Fees must be received and deposited in a timely manner.

Money may only be collected by staff authorized by the Principal. Students may not collect fees.

The School may not use revenue collected through fees to offset the cost of fee waivers by requiring students and families who do not qualify for fee waivers to pay an increased fee amount to cover the costs of students and families who qualify for fee waivers. However, the School may notify students and families that the students and families may voluntarily pay an increased fee amount or provide a donation to cover the costs of other students and families.

Fee Waiver Provisions

To ensure that no student is denied the opportunity to participate in a class or activity that is provided, sponsored, or supported by the School because of an inability to pay a fee, the School provides fee waivers or other provisions in lieu of a fee. Fee waivers or other provisions in lieu of a fee payment will be available to any student whose parent cannot pay a fee.

All fees are subject to waiver.

Non-waivable charges are not subject to waiver.

Fee Waiver Administration

The Principal will administer this policy and will review and grant fee waiver requests or designate another staff member to do so. The process for obtaining waivers or pursuing alternatives will be administered in accordance with this policy, fairly, objectively, and without delay, and in a manner that avoids stigma, embarrassment, undue attention, and unreasonable burdens on students and parents.

The School will not treat a student receiving a fee waiver or provision in lieu of a fee waiver differently from other students. The process for obtaining waivers or pursuing alternatives will create no visible indicators that could lead to identification of fee waiver applicants.

The process for obtaining waivers or pursuing alternatives will comply with the privacy requirements of The Family Educational Rights and Privacy Act of 1974, 20 U.S.C. 1232g (FERPA). The School may not identify a student on fee waiver to students, staff members, or other persons who do not need to know. As a general rule, teachers and coaches do not need to know which students receive fee waivers. Students may not assist in the fee waiver approval process.

Fee Waiver Eligibility

A student is eligible for a fee waiver if the School receives verification that:

- (a) In accordance with Utah Code § 53G-7-504(4), family income falls within levels established annually by the State Superintendent and published on the Utah State Board of Education website;
- (b) The student to whom the fee applies receives Supplemental Security Income (SSI). If a student receives SSI, the School may require a benefit verification letter from the Social Security Administration;
- (c) The family receives TANF or SNAP funding. If a student's family receives TANF or SNAP, the School may require the student's family to provide the School an electronic copy or screenshot of the student's family's eligibility determination or eligibility status covering the period for which the fee waiver is sought from the Utah Department of Workforce Services;
- (d) The student is in foster care through the Division of Child and Family Services or is in state care. If a student is in state care or foster care, the School may rely on the youth in care required intake form or school enrollment letter provided by a caseworker from the Utah Division of Child and Family Services or the Utah Juvenile Justice Department; or
- (e) The student qualifies for McKinney-Vento Homeless Assistance Act assistance. If a student qualifies for McKinney-Vento, verification is obtained through the School's McKinney-Vento liaison.

The School will not maintain copies of any documentation provided to verify eligibility for a fee waiver.

The School will not subject a family to unreasonable demands for re-qualification.

The School may grant a fee waiver to a student, on a case by case basis, who does not qualify for a fee waiver under the foregoing provisions but who, because of extenuating circumstances, is not reasonably capable of paying the fee.

The School may charge a proportional share of a fee or a reduced fee if circumstances change for a student or family so that fee waiver eligibility no longer exists.

The School may retroactively waive fees if eligibility can be determined to exist before the date of the fee waiver application.

Fee Waiver Approval Process

The School will inform patrons of the process for obtaining waivers and will provide a copy of the standard fee waiver application on the School's website.

The Principal or a designee will review fee waiver applications within five (5) school days of receipt. If the School denies a request for a fee waiver, the School will provide the decision to deny a waiver in writing and will provide notice of the procedure for appeal in the form approved by the Utah State Board of Education.

Any requirement that a student pay a fee will be suspended during any period in which the student's eligibility for a waiver is being determined or during the time a denial of waiver is being appealed.

Each year the School will maintain documentation regarding the number of School students who were given fee waivers, the number of School students who worked in lieu of fee waivers, the number of School students who were denied fee waivers, the total dollar value of student fees waived by the School, and the total dollar amount of all fees charged to students at the School, as this information may be requested by the Utah State Board of Education as part of its monitoring of the School's school fees practices.

The School shall also submit school fee revenue information in the Utah Public Education Financial System as provided in R277-113.

Appeal Process

Denial of eligibility for a waiver may be appealed in writing to the Principal within ten (10) school days of receiving notice of denial. The School shall contact the parent within two (2) weeks after receiving the appeal and schedule a meeting with the Principal to discuss the parent's concerns. If, after meeting with the Principal, the waiver is still denied, the parent may appeal, in writing, within ten (10) school days of receiving notice of denial to the Board.

In order to protect privacy and confidentiality, the School will not retain information or documentation provided to verify eligibility for fee waivers.

Alternatives to Fees and Fee Waivers

The School may allow a student to perform service or another approved task (as described in Utah Code § 53G-7-504(2)) in lieu of paying a fee or, in the case of an eligible student, in lieu receiving a fee waiver, but such alternatives may not be required. If the School allows an alternative to satisfy a fee requirement, the Principal will explore with the interested student and his or her parent/guardian the alternatives available for satisfying the fee requirement, and parents will be given the opportunity to review proposed alternatives to fees and fee waivers. However, if a student is eligible for a waiver, textbook fees must be waived, and no alternative in lieu of a fee waiver is permissible for such fees.

The School may allow a student to perform service in lieu of paying a fee or receiving a fee waiver if: (a) the School establishes a service policy or procedure that ensure that a service assignment is appropriate to the age, physical condition, and maturity of the student; (b) the School's service policy or procedure is consistent with state and federal laws, including Section 53G-7-504 regarding the waiver of fees and the federal Fair Labor Standards Act, 29 U.S.C. 201; (c) the service can be performed within a reasonable period of time; and (d) the service is at least equal to the minimum wage for each hour or service.

A student who performs service may not be treated differently than other students who pay a fee.

The service may not create an unreasonable burden for a student or parent and may not be of such a nature as to demean or stigmatize the student.

The School will transfer the student's service credit to another LEA upon request of the student.

The School may make an installment payment plan available for the payment of a fee. Such a payment plan may not be required in lieu of a fee waiver.

The School may provide optional individual fundraising opportunities for students to raise money to offset the cost of the student's fees as provided in R277-408.

Annual Review, Approval, and Training

The Board will review and approve this policy annually.

The School will develop a plan for at least annual training of School employees on fee-related policies specific to each employee's job functions.

March 12, 2026 Board Meeting Financial Summary

As of February 28th, we are 67% through fiscal year 2026. Please keep this in mind as we compare budget to actuals below.

On the Statement of financial position, you will notice that cash and investments are both up year over year. Current liabilities have decreased year over year. This has led to an overall increase in both the School's fund balance and net income year over year.

Total Revenue is right on target at 66%; it will begin to tick upward as we draw down some of our federal funding in March. We have already submitted some requests.

Total expenditures are at 59.4% of budget.

Areas of the P&L that we want to discuss are those budget categories where actual expenditure exceeds the budget by more than 5%:

Budget Category	Purchased Property Services		
Budget Sub Categories	Budget	Actual	% of Budget
0410 - Utility Services	11,000	7,568	68.8 %
0422 - Snow Removal Services	6,000	3,225	53.8 %
0423 - Custodial Services	72,500	46,952	64.8 %
0424 - Lawn Care Services	27,000	21,108	78.2 %
0430 - Repairs & Maintenance Services	25,000	37,515	150.1 %
0441 - Rental of Land & Buildings	2,800	0	0.0 %
0442 - Rental of Equipment & Vehicles	0	3,949	0.0 %
0443 - Rental of Computers & Related Equipment	0	2,890	0.0 %
0490 - Other Purchased Property Services	5,000	2,193	43.9 %
Total Purchased Property Services	149,300	125,400	84.0 %

Underestimated the budgets for Utilities and Lawn Care. The lawn care will be offset somewhat by Snow Removal. Lawn care came in high and so far snow removal expense has been lower than expected.

The school has required some costly electrical work along with an unexpected water heater replacement to satisfy requirements of the anticipated school lunch program. A light pole was also damaged in an accident. A gate had to be repaired.

No budget was initially included for rental of equipment and vehicles and rental of computers and related equipment. This will be adjusted during the budget amendment process prior to year end.

Budget Category	Supplies & Materials		
Budget Sub Categories	Budget	Actual	% of Budget
0610 - General Supplies	70,000	76,633	109.5 %
0610-001 - Furniture and Fixtures (not capitalized)	1,500	4,070	271.3 %
0610-002 - Other Food Purchases	5,500	0	0.0 %
0621 - Natural Gas	19,000	8,371	44.1 %
0622 - Electricity	50,000	33,012	66.0 %
0641 - Textbooks	28,000	6,832	24.4 %
0642 - E-Textbooks / Online Curriculum	8,000	11,480	143.5 %
0644 - Library Books	500	248	49.6 %
0650 - Supplies - Technology Related	40,000	13,428	33.6 %
0670 - Software	20,000	22,613	113.1 %
0680 - Maintenance Supplies and Materials	20,000	5,322	26.6 %
Total Supplies & Materials	262,500	182,009	69.34%

We have surpassed our initial budget for general supplies for the year. While we always expect these to be high due to all of the expenses that are incurred to start the school year, this is higher than expected. We will have to adjust the budget, but we will want to be conscientious about supplies going forward for the remainder of the year. Anytime we are this far ahead of budget, I like to take a more detailed look through the expenses and determine if there are items that have been coded incorrectly.

While furniture and fixtures looks high, it's mainly due to the budget being relatively small, so any overage is going to look fairly extreme. Not worried about this.

Software is high, but there is a coding error in there. I have made the adjusting journal entry, but it won't be reflected until you receive your financials next month. There was \$7,216 of expense coded to software that should have been coded to online curriculum.

Budget Category

Property

Budget Sub Categories

	Budget	Actual	% of Budget
0730 - Equipment	55,000	60,587	110.2 %
0733 - Capitalized Furniture and Fixtures	0	9,910	0.0 %
0734 - Technology Related Hardware	0	8,880	0.0 %
0736 - Technology Software	0	10,053	0.0 %
Total Property	55,000	89,430	162.6 %

There was a lot of kitchen equipment purchased at the beginning of the year. Walkin refrigerator and compressor warranty were purchased in February.

Tables and Whiteboards were purchased at the beginning of the school year. There was no budget setup up for this. This will be addressed during the budget amendment process in April or May.

The school needed to upgrade the server. The server equipment and related software is expensive but necessary. We did not include this in the initial budget. This will be addressed during the budget amendment process in April or May.

Questions/Concerns?

EXECUTIVE SUMMARY

FEE SCHEDULE

This is the ***second comment period*** for the fee schedule. Board action is needed at this time.

Per state law, if a school charges any school fees, the school must approve a fee schedule for the upcoming school year by June 1 before the school year begins. In addition, prior to the June 1 deadline, the school must also allow public comment on the proposed fee schedule at no fewer than two board meetings. A school's fee schedule must include a description of all fees charged, the amount of any fee, an explanation of how the fees will be spent by the school, a per student annual maximum fee amount for the school year (the maximum amount a student would pay in fees if the student participated in all activities, classes, clubs, etc. that charge a fee), and a statement notifying parents that their student might be eligible for a fee waiver.

Action: *Public Comment Opportunity & Board Vote needed.*

DIRECTORS REPORT

See board meeting documentation folder for the most up to date report.

Action: *No action needed*

FINANCE REPORT

See board meeting documentation folder for the most up to date report.

Action: *No action needed*

SCHOOL LAND TRUST PLAN 2026/2027

Each year the school receives funding through the Utah School LAND Trust Program, which distributes state School LAND Trust revenue to support improved student academic achievement. The School LAND Trust Plan outlines how resources will be used to support measurable academic growth for all students.

Action: *Board Vote*

HELPSIDE PROFESSIONAL EMPLOYER AGREEMENT

A new Professional Employer Agreement between the school and Helpside is being presented for board approval. Under the Utah Procurement Code, contract terms are generally limited to five years, with limited exceptions. Helpside provides a comprehensive suite of services, including payroll administration, 401(k) benefits, FMLA administration, unemployment support, and workers' compensation coverage. Helpside has consistently delivered high-quality, comprehensive services at competitive rates. The terms of the new agreement are consistent with the expiring agreement. It is recommended that

the Board approve the Professional Employer Agreement with Helpside and authorize the Board President to execute the agreement on behalf of the school.

Action: Board Vote, authorize board chair to sign

CARPET PURCHASE

Administration has received one quote for the carpet replacement project but intends to gather additional quotes to ensure the best value. Because pricing may vary between vendors and the current quote include multiple options, Kacee is requesting board approval for an “up to” spending amount that would allow the school to move forward with the most competitive quote once additional bids are received.

Action: Board Vote

RATIFY BARGREEN ELLINGSON PURCHASE

Administration is seeking approval for the purchase of a freezer from Bargreen Ellingson to support the school’s new kitchen. This equipment will allow the kitchen to begin functioning. This invoice is for the amount of \$15,113.84.

Action: Board Vote

ALISON’S MONTESSORI QUOTE

Administration is requesting approval for a purchase from Alison’s Montessori to provide curriculum materials and classroom furniture for approximately 20 students. These materials will support the implementation of the Montessori program and ensure the classroom is properly equipped for student learning. This quote is for the amount of \$14,636.49.

Action: Board Vote

SPEECH THERAPY CONTRACT

Administration is requesting approval to review a one-year contract with Something to Talk About for speech therapy services for the 2026-2027 school year. The school has previously partnered with this provider.

Action: Board Vote

ADOPTING AI POLICY

This new AI Policy is general in nature, aligns with the [AI Framework](#) established by the Utah State Board of Education, and provides basic rules with respect to AI use at the school. Per the new policy, the use of specific AI tools and technologies at the school will be set forth in administrative procedures established by the Director or in classroom policies developed by teachers and approved by the Director or the Director’s designee.

Action: Board vote needed

FEE WAIVER POLICY

HB 344 from the 2025 legislative session separates out courses for school fee charging purposes into “non-fee courses” (ELA, health education, math, science, and social studies) and “fee courses” (all courses that are not non-fee courses) This new law restricts what types of fees can be charged for such courses. It also specifies that beginning with the 26-27 school year, schools that have secondary students (students in grades 7-12) and award them credit toward graduation must provide at least one option for each graduation credit requirement that does not require the payment or waiver of a fee. However, there is an exception for charter schools that only offer the following for a given graduation requirement: an AP, IB, or CE course. HB 344 also extends the annual deadline by which schools must approve their fee schedules for the following school year, changing it from April 1 to June 1. The changes from HB 344 and R277-407 (which was last revised in December 2025) have been worked into the school’s Fee Waiver Policy.

Action: Board vote needed

MARIA MONTESSORI ACADEMY - HALLWAYS AND MAIN AREAS

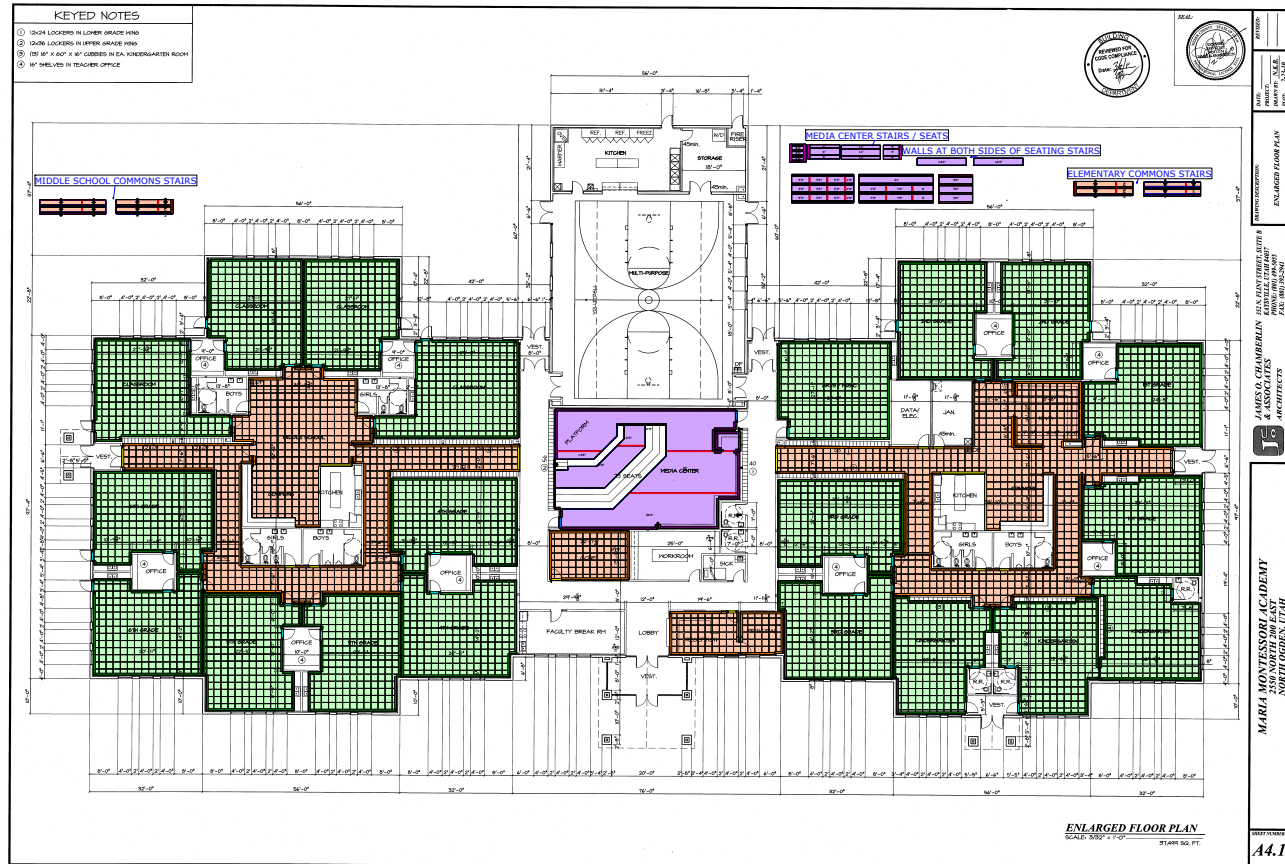
01 May 2025 : MARIA MONTESSORI ACADEMY - HALLWAYS AND MAIN AREAS

Summary Report



- CARPET TILE (GREEN) - STYLE / COLOR - TBD
- CARPET TILE (ORANGE) - STYLE / COLOR TBD
- BROADLOOM CARPET (ORANGE) - STYLE / COLOR - TBD - 12' WIDE
- BROADLOOM CARPET (PURPLE) - STYLE / COLOR - TBD - 12' WIDE
- CARPET BASE (GREEN) - 4.5" STYLE / COLOR TBD
- CARPET BASE (ORANGE) - 4.5" STYLE / COLOR TBD
- CARPET BASE (PURPLE) - 4" STYLE / COLOR TBD
- CARPET STRINGER (ORANGE) @ STAIRS - STYLE / COLOR TBD
- CARPET STRINGER (PURPLE) @ STAIRS - STYLE / COLOR TBD
- TRANSITION (ORANGE) - CARPET TO EXISTING - TBD
- TRANSITION (PURPLE) - CARPET TO EXISTING - TBD
- TRANSITION (GREEN) - CARPET TO EXISTING - TBD

Scale 1:650 (original drawing scale 1:128)



Something to Talk About, LLC

Somethingtotalkabouthealth@gmail.com

Katie Poland M.S., CCC-SLP
Heather Ferguson M.S., CCC-SLP
197 West 2050 south
Perry UT 84302
435.830.8647

Contract for Speech Therapy Services Maria Montessori Academy 2026-27 School Year

Specifications

Something To Talk About, LLC will provide speech/language therapy services for students within the District, grades K-9 for an estimated forty-two (42) hours per week. Services will initiate on **August 10, 2026** for the 2026-2027 school year and are renewable yearly. This agreement may be terminated by either party by giving thirty (30) days written notice. Services will be billed at seventy-seven dollars (\$77) per hour for work done by a speech language pathologist (SLP); this includes work done at home that is directly related to servicing students such as writing IEP's, scoring evaluations and writing evaluation reports. Work that is done by the speech-language technician (SLT) will be billed at fifty-nine dollars (\$59) per hour. Work done by an SLT will be supervised and fall within the scope of the SLT role as outlined by the Utah State Board of Education (USBE) guidelines. Services will be billed to Maria Montessori School on the first day of the following month. Payment for services is expected by the fifteenth of each month. Payments not received by the last day of the month will be subject to a \$100 late fee. The services to be provided include:

- Provide Kindergarten articulation and language screeners.
- Provide hearing screeners on Kindergarten, 1st, 3rd, and 5th graders and all Special Education students.
- Provide consultative and direct speech/language therapy services.
- Consult with teachers, parents, and other professionals
- Screen and/or evaluate each student in all areas of suspected language dysfunction as identified by the RTI team or the IEP team members for possible services. Evaluations and reports will be completed within timelines required by the school district and IDEA.
- Review progress of each student in the therapy program and document progress with the same frequency as general education students.
- Revise IEP goals and objectives with IEP team members, as needed, and make recommendations to parents and other professionals as appropriate.
- Confer with classroom teachers concerning the classroom application of speech therapy recommendations.
- Participate in the individual education planning process by collaborating with special education and general education teachers as appropriate for each student who is to receive speech/language therapy.
- Maintain appropriate records and files for students receiving speech/language therapy.
- Maintain current speech therapy evaluations for students receiving speech/language therapy services so as to be in compliance with IDEA.

The speech-language pathologist (SLP) and the speech-language technician (SLT) will possess and maintain current licensure and credentials as required by the Utah State Board of Education (USBE).

Something To Talk About, LLC

Date

Maria Montessori Academy

Date

Maria Montessori Academy

Statement of Activities

Created on March 10, 2026
For Prior Month

	Annual June 30, 2026 Budget	Year-to-Date February 28, 2026 Actual	% of Budget
Net Income			
Income			
Revenue From Local Sources	211,500	140,894	66.6 %
Revenue From State Sources	5,092,129	3,462,366	68.0 %
Revenue From Federal Sources	102,500	0	0.0 %
Revenue from Other Sources	50,000	0	0.0 %
Total Income	5,456,129	3,603,260	66.0 %
Expenses			
Instruction/Salaries	2,560,000	1,454,501	56.8 %
Employee Benefits	555,000	311,753	56.2 %
Purchased Prof & Tech Serv	626,000	410,507	65.6 %
Purchased Property Services	149,300	125,400	84.0 %
Other Purchased Services	333,500	74,584	22.4 %
Supplies & Materials	262,500	182,009	69.3 %
Property	55,000	89,430	162.6 %
Debt Services & Miscellaneous	742,500	490,445	66.1 %
Total Expenses	5,283,800	3,138,629	59.4 %
Total Net Income	172,329	464,631	269.6 %

Maria Montessori Academy
Statement of Financial Position
Created on March 10, 2026
For Prior Month

	Period Ending 02/28/2026	Period Ending 02/28/2025
	<u>Actual</u>	<u>Actual</u>
Assets & Other Debits		
Current Assets		
Operating Cash	3,111,598	2,745,220
Accounts Receivables	2,811	292
Total Current Assets	<u>3,114,409</u>	<u>2,745,512</u>
Net Assets		
Fixed Assets	12,488,512	12,515,657
Depreciation	(3,364,049)	(3,048,199)
Total Net Assets	<u>9,124,463</u>	<u>9,467,458</u>
Total Assets & Other Debits	<u>12,238,872</u>	<u>12,212,970</u>
Liabilities & Fund Equity		
Current Liabilities	50,440	56,211
Long-Term Liabilities	<u>9,727,235</u>	<u>10,024,298</u>
Fund Balance	<u>1,996,566</u>	<u>1,720,436</u>
Net Income	<u>464,631</u>	<u>412,025</u>
Total Liabilities & Fund Equity	<u>12,238,872</u>	<u>12,212,970</u>

Goal

Students will show growth in mathematics by the end of the school year as measured by Acadience math assessments. Scores from BOY will increase by 5% at EOY for Kindergarten through third grade.

Academic Area

Mathematics

Measurements

Acadience benchmarks and progress monitoring.

Action Steps

1. Increase targeted academic intervention and Instructional Coaching
2. Professional development to improve instructional practice
3. Data systems and curriculum resources to support individualized instruction

Planned Expenditures

Category	Description	Estimated Cost
Salaries and Benefits		\$40,219.83
Professional Development		\$10,000
Transparent Classroom Record keeping/parent communication software K-5		\$8000
Panorama Student Information System		\$8000
iReady K-9		\$8000
SeedSCOPES - JrHigh		\$2000
Estimated SLT Total Allocation		\$76,219.83

The mission of Maria Montessori Academy is to provide an individualized education that promotes academic excellence founded on the authentic philosophy of Dr. Maria Montessori. Maria Montessori Academy will craft each child's education in partnership with educators and parents to achieve higher levels of academic, personal and social achievement, thereby preparing students to become constructive contributors to their community.

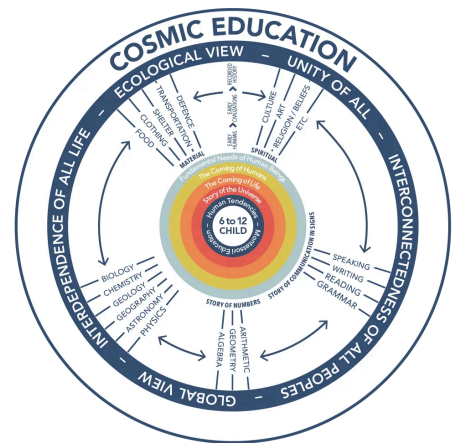
Director Report - March 2026

Montessori Moment - Cosmic Education

In Montessori classrooms, children study history, science, geography, math, and culture through this lens of interconnectedness. We call this **Cosmic Education**—helping students understand that they are part of a larger story and that their own contributions matter. The goal is not just academic knowledge, but developing thoughtful humans who feel responsible for the world and their community.

Key Montessori ideas:

- Natural Laws: The universe follows natural laws, from gravity to the water cycle, which children observe and study. Human societies also create laws to maintain order and cooperation.
- Work & Contributions: Everything in nature and human civilization has a role to play. From the work of bees pollinating plants to the contributions of scientists and artists, children see how each element of the universe is purposeful.
- Interdependencies & Relationships: All systems in the universe, from ecosystems to human economies, are interconnected. Montessori education highlights these relationships to foster understanding and responsibility.
- Love, Appreciation, & Gratitude: Cosmic Education nurtures a sense of reverence for the universe, whether through scientific discovery or historical narratives.



Schoolwide Priorities - Staff Climate Survey Results

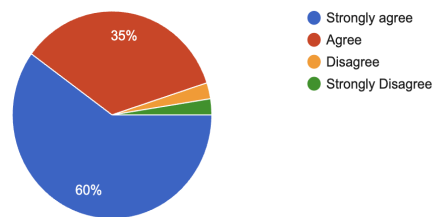
1 - Deepen Our Collective Understanding of Montessori Philosophy Through Consistent, Engaging, and Inclusive Community Learning Opportunities

- National Center for Montessori in the Public Sector conference in April
- Mentorship with Walden School in Provo through WestEd/SCSB
-

Dimension 6 : Interpersonal Relationships : Respect for Diversity : There is mutual respect for individual differences (e.g. gender, race, culture, etc) at all levels of the school - student-student, adult-student, adult-adult and overall norms for tolerance.



40 responses

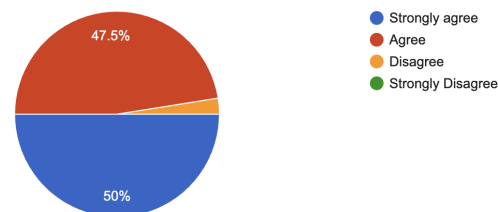


2 - Enhance Academic Excellence Through PLC Accountability, Student Ownership of Learning, and Clarity Around High-Quality Work

- Change Management Cohort for Literacy Improvement.
- Discussing improvements for next year.
- Continued refinement of PLCs.
- Student-led conferences next week.

Dimension 4 : Teaching and Learning : Support for Learning : The school has supportive teaching practices, such as : encouragement and constructive feedback; varied opportunities to demonstrate knowledge and skills; support for risk-taking and independent thinking; atmosphere conducive to dialogue and questioning; academic challenge; and individual attention.

40 responses



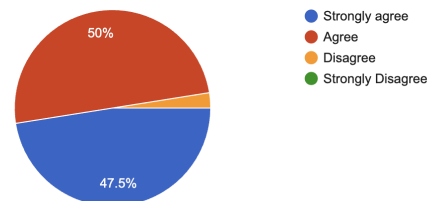
3 - Strengthen Family Engagement to Support Student Learning Through Classroom Connection, Home Partnership, and Meaningful Observation Opportunities.

- Call for Family Teacher Association members for the 26-27 school year open.

Dimension 9 : Institutional Environment : School Connectness/Engagement : People feel a positive identification with the school and norms for broad participation in school life for students, staff, and families.



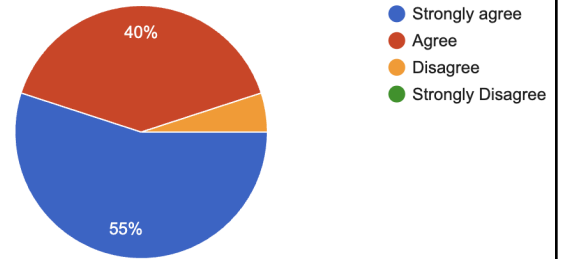
40 responses



4 - Foster Staff Satisfaction and Retention Through Supportive Leadership, Clear Communication, Shared Expectations, and Manageable Responsibilities

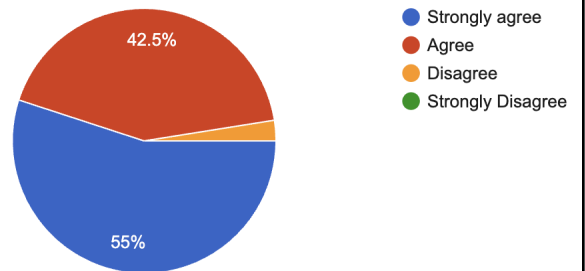
Dimension 11 : Staff Only : Leadership : The school has an administration that creates and communicates a clear vision, and is accessible to and supportive of school staff and staff development.

40 responses



Dimension 12 : Professional Relationships : The school fosters positive attitudes and relationships among school staff that support effectively working and learning together.

40 responses

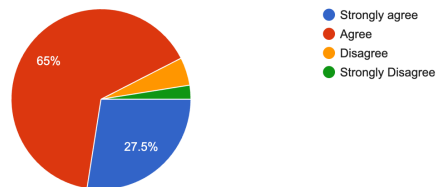


5 - Promote positive student behavior through intentional design of individualized and challenging work, consistent implementation of expectations, and a shared commitment to trust in established systems and supportive adults.

- [Positive Behavior Systems Report](#)

Dimension 3 : Safety : Sense of Social-Emotional Security : There is a sense that students and adults feel safe from verbal abuse, teasing and exclusion.

40 responses



ENROLLMENT

25-26 Enrollment (As of 3/9/26)

K	1	2	3	4	5	6	7	8	9	Total
59	46	61	50	30	40	43	25	21	23	398

26-27 Enrollment (As of 3/9/26)

K	1	2	3	4	5	6	7	8	9	Total
68	58	45	58	47	29	39	43	25	20	432

STAFFING UPDATES

- Interviewing for a fourth Early Childhood teacher
- Interviewing for JrHigh PE, College and Career Awareness, Math and Science

MARKETING

- Hosting the 2027 Utah Montessori conference in January 2027
- Filling a few more kindergarten spots

PROGRAMS

- **School Land Trust Updates** -
- **Preschool Program** - 15 students enrolled for next year!
- **Academics** - RISE and ASPIRE Testing in April. Acadience testing in May
- **Athletics** - Girls Basketball
- **Musical Theater** - Sound of Music Performances begin April 8th!
- **Family Teacher Association** -
 - Gearing up for the Imaginarium!
 - Promoting next year's FTA events and soliciting leadership.
- **NSLP** - Training on new equipment begins. Shadowing at other school kitchens.
- **Gifted and Talented** - Continued weekly lessons with Ms. Candice. 15 students plan to attend the UVU Math contest on March 9th! Ms. Candice provided a PD for staff members about G&T addressing myths and facts of gifted education. 14 Junior High Students participated in UVUs State Math Competition. [G&T Newsletter](#)
- **Safety** - School Guardian volunteers

FACILITIES

- Install of a privacy fence nearly complete on the East side.
- Anticipating carpet replacement in the Elementary building along with complete refresh/reorganization of classroom shelves and offices due to the need to move everything out.

FUNDRAISING

- Kitchen cookbook project and soliciting businesses for donations.
- Microeconomy selling concessions at home sports games.

UPCOMING

- March 13: At Home Learning Day/Deep Data Dive
- March 13: Imaginarium 6:30-9:00pm
- March 19-20: Parent Teacher Conferences
- March 26 & 27: Spring Performances
- March 30-April 3: Spring Break
- April 8 - 11: Sound of Music Performances
- April 13-16: 6th grade trip to Teton Science School
- April 15: End of Year Testing begins
- April 23: Junior High Information Night for incoming 6th graders
- April 30: SCSB Comprehensive Review
- April 30: Early Childhood Meet and Greet
- May 4-8: 9th grade trip to Maine
- May 21: Last Day of School
- May 26 - 29: Professional Development days



COMMERCIAL FLOORING

May 7, 2025

KYLE VANDERDOES
ACADEMICA WEST
290 N FLINT ST SUITE A
KAYSVILLE, UT 84037

Re: MARIA MONTESSORI ACADEMY
Bid # 400329

Dear Kyle:

Thank you for the opportunity to submit the following proposal for the above referenced project.

Scope of Work:

OPTION 1 (PATCRAFT):

MAIN-HW	PROVIDE AND INSTALL: 698 SY CARPET TILE, BROADLOOM CARPET ON COMMONS SEATING AND 1,200 LF 4.5" CARPET BASE	\$39,075.00
CLASSROOM	PROVIDE AND INSTALL: 1,908 SY CARPET TILE AND 2,500 LF 4.5" CARPET BASE	\$96,995.00
MEDIA CEN	PROVIDE AND INSTALL: 275 SY BROADLOOM CARPET AND 200 LF 4.5" CARPET BASE	\$14,500.00

OPTION 2 (SHAW):

MAIN-HW	PROVIDE AND INSTALL: 701 SY CARPET TILE, BROADLOOM CARPET ON COMMONS SEATING AND 1,200 LF 4.5" CARPET BASE	\$29,895.00
CLASSROOM	PROVIDE AND INSTALL: 1,909 SY CPT TILE & 2,500 LF 4.5" CARPET BASE	\$70,795.00
MEDIA CEN	PROVIDE AND INSTALL: 275 SY BROADLOOM CARPET AND 200 LF 4.5" CARPET BASE	\$14,500.00

The pricing includes regular floor prep (expansion joints) and assumes the concrete will be flat, level and suitable for installation.

Pricing includes the removal of existing carpet. Extra labor will be required if double stick pad (unusual with this existing carpet) or excessively applied/difficult adhesive is present. (Carpet should be able to be reasonably



Re: MARIA MONTESSORI ACADEMY
Bid # 400329

pulled up by hand with light scraping of glue.)

Pricing excludes attic stock aside from leftover materials.

Furniture move excluded, but may be added for:
Hallways and main areas: \$1,500.00
Classrooms: \$9,200.00

Option 1: Patcraft - Big Splash! - Rip (carpet tile, broadloom for wrapped seating and media center) and carpet cove base.

Option 2: Shaw Contract - Hub Accent - Action Blue (carpet tile) with Shaw Contract - Gradient - Slate (coordinating base and broadloom).

We appreciate the opportunity.

Thank you,

A handwritten signature in black ink, appearing to read 'Christal Stephens', written over a horizontal line.

Christal Stephens
Contract Sales
Wall 2 Wall Commercial Flooring - Ogden
christal@w2wcommercial.com 385-279-0888

* * *

I hope you find this proposal complete and to your satisfaction.
Please sign below to accept this proposal.

Authorized Signature

Date



www.alisonsmontessori.com

91B McKee Drive
Mahwah, NJ 07430
Toll Free: 877-566-1855
Tel: 201-831-0006
Fax: 201-831-0008
E-mail: orders@alisonsmontessori.com

QUOTE

Date: 03/06/2026 Order#: 147249

Order Comments:

Quote for 3-6 Math+Language+ Furniture/20 students. Valid through April 6, 2026.

Bill To: (Customer ID#65964)

Maria Montessori Academy
Kacee Weaver
290 NORTH FLINT ST
KAYSVILLE, UT 84037
United States
801-444-9378
kweaver@mmautah.org

Ship To:

Maria Montessori Academy
Kacee Weaver
2505 North 200 East
North Ogden, UT 84414
United States
(801) 827.0150

Payment Method:

Quote

Shipping Method:

Shipping Charges via Freight Truck

Code	Description	Qty	Price	Total
CR19.MATH	Math Package (Premium Quality) (3-6)	1	\$4,423.25	\$4,423.25
^ M29	Large Fraction Skittles (1/1 - 1/4)	1	\$0.00	\$0.00
^ M55.i	Insets for Metal Fraction Circles	1	\$0.00	\$0.00
^ M55.S	Stands for Metal Fraction Circles	1	\$0.00	\$0.00
^ PF07	Stand for Red and Number Rods (Premium Quality)	1	\$0.00	\$0.00
^ PM05	Blue and Red Number Rods (Premium Quality)	1	\$0.00	\$0.00
^ PM07	Sandpaper Numbers (Premium Quality)	1	\$0.00	\$0.00
^ PM08.1	Teen Boards (Premium Quality)	1	\$0.00	\$0.00
^ PM08.2	Tens Boards (Premium Quality)	1	\$0.00	\$0.00
^ PM08.A	Teen Beads Box (Premium Quality)	1	\$0.00	\$0.00
^ PM08.B	Tens Beads Box (Premium Quality)	1	\$0.00	\$0.00
^ PM08.C	Colored Bead Stair Hanger (Premium Quality)	1	\$0.00	\$0.00
^ PM08.D	Teen Bead Hanger (Premium Quality)	1	\$0.00	\$0.00
^ PM09	Spindle Boxes with 45 Spindles (Premium Quality)	1	\$0.00	\$0.00
^ PM10	Addition Strip Board (Premium Quality)	1	\$0.00	\$0.00
^ PM11	Subtraction Strip Board (Premium Quality)	1	\$0.00	\$0.00
^ PM12	Multiplication Board (Premium Quality)	1	\$0.00	\$0.00
^ PM13	Division Board (Premium Quality)	1	\$0.00	\$0.00

^ PM14.C	Introduction to Decimal Quantity Tray Only (Premium Quality)	1	\$0.00	\$0.00
^ PM14.D	Introduction to Decimal Quantity (Beads Only) (Premium Quality)	1	\$0.00	\$0.00
^ PM20.A	Introduction to Decimal System (Exchange Game) (Premium Quality)	1	\$0.00	\$0.00
^ PM21	Nine Wooden Thousand Cubes (Premium Quality)	4	\$0.00	\$0.00
^ PM25.B	Golden Bead Material (8 mm Acrylic Individual Bead - Plastic Cards) (Premium Quality)	1	\$0.00	\$0.00
^ PM26	Addition Snake Game (Premium Quality)	1	\$0.00	\$0.00
^ PM26.B	Subtraction Snake Game (Premium Quality)	1	\$0.00	\$0.00
^ PM32	Small Bead Frame (Premium Quality)	1	\$0.00	\$0.00
^ PM33	Large Bead Frame (Premium Quality)	1	\$0.00	\$0.00
^ PM35	Bead Cabinet (Premium Quality)	1	\$0.00	\$0.00
^ PM35.AR	Wooden Printed Arrows for Complete Bead Material (Premium Quality)	1	\$0.00	\$0.00
^ PM36	Bead Material for Bead Cabinet (8MM) (Premium Quality)	1	\$0.00	\$0.00
^ PM40.A	Large Wooden Number Cards (1-9000) (Premium Quality)	1	\$0.00	\$0.00
^ PM40.C	Small Wooden Number Cards (1-9000) (Premium Quality)	1	\$0.00	\$0.00
^ PM41	Cut-Out Numerals and Counters (Premium Quality)	1	\$0.00	\$0.00
^ PM45	Table Top Number Rods (Premium Quality)	1	\$0.00	\$0.00
^ PM46	Stamp Game (Premium Quality)	1	\$0.00	\$0.00
^ PM53	Hundred Board (Premium Quality)	1	\$0.00	\$0.00
^ PM57.B	Decanomial Beads Only (55 each) (Premium Quality)	1	\$0.00	\$0.00
^ PM57.C	Decanomial Beads Box Only (Premium Quality)	1	\$0.00	\$0.00
CR19.LAN	Language Package (Premium Quality) (3-6)	1	\$1,888.74	\$1,888.74
^ FA24	Rabbit Hutch	1	\$0.00	\$0.00
^ L129	Storage Tray for Pink Language Series	1	\$0.00	\$0.00
^ L130	Storage Tray for Blue Language Series	1	\$0.00	\$0.00
^ L167	Lowercase Print Tracing Board	1	\$0.00	\$0.00
^ L38.A	Montessori Farm Animals without Farm	1	\$0.00	\$0.00
^ L49	Farm Game Labels (Printed)	1	\$0.00	\$0.00
^ PL01	Lowercase Sandpaper Letters: Print (Premium Quality)	1	\$0.00	\$0.00
^ PL01.C	Lowercase Sandpaper Letters: Cursive (Premium Quality)	1	\$0.00	\$0.00

^ PL04	Uppercase Sandpaper Letters: Print (Premium Quality)	1	\$0.00	\$0.00
^ PL04.C	Uppercase Sandpaper Letters: Cursive (Premium Quality)	1	\$0.00	\$0.00
^ PL05	Sandpaper Double Letters: Print (Premium Quality)	1	\$0.00	\$0.00
^ PL06.B	Small Movable Alphabets: Print - Red with Blue Vowels (Premium Quality)	1	\$0.00	\$0.00
^ PL09	Large Movable Alphabet: Lowercase - Pink and Blue (Premium Quality)	1	\$0.00	\$0.00
^ PL12.A	Metal Inset Tray (Premium Quality)	1	\$0.00	\$0.00
^ PL12.B	Wall Frame for Metal Insets (Premium Quality)	1	\$0.00	\$0.00
^ PL12.i	Metal Insets (Premium Quality)	1	\$0.00	\$0.00
^ PL12.S	Stands for Metal Insets (Premium Quality)	1	\$0.00	\$0.00
^ PL14	Small Paper Box (Premium Quality)	1	\$0.00	\$0.00
^ PL21	Introduction to Noun and Verb Solids (Premium Quality)	1	\$0.00	\$0.00
^ PL28	The Farm (Premium Quality)	1	\$0.00	\$0.00
L39	Montessori Pink Language Series (Printed) [Font Style:Print Font] [Laminate or Laminate & Cut:Laminate & Cut]	1	\$169.00	\$169.00
L40	Montessori Blue Language Series (Printed) [Font Style:Print Font] [Laminate or Laminate & Cut:Laminate & Cut]	1	\$192.00	\$192.00
L41	Montessori Green Language Series (Printed) [Font Style:Print Font] [Laminate or Laminate & Cut:Laminate & Cut]	1	\$582.00	\$582.00
L63	Noun Cards (Printed) [Laminate or Laminate & Cut:Laminate & Cut]	1	\$123.00	\$123.00
L156	Metal Insets Nomenclature Cards (Printed) [Laminate or Laminate & Cut:Laminate & Cut]	1	\$22.00	\$22.00
L212	Emotions (Printed) [Laminate or Laminate & Cut:Laminate & Cut]	1	\$22.00	\$22.00
L213	Verbs: Actions (Printed) [Laminate or Laminate & Cut:Laminate & Cut]	1	\$33.00	\$33.00
L214	A Day in a Child's Life (Printed) [Laminate or Laminate & Cut:Laminate & Cut]	1	\$29.00	\$29.00
L215	Things at School (Printed) [Laminate or Laminate & Cut:Laminate & Cut]	1	\$32.00	\$32.00

L216	Facial Expressions (Printed) [Laminate or Laminate & Cut:Laminate & Cut]	1	\$29.00	\$29.00
L219	Everyday Items (Printed) [Laminate or Laminate & Cut:Laminate & Cut]	1	\$32.00	\$32.00
L220	Favorite Foods (Printed) [Laminate or Laminate & Cut:Laminate & Cut]	1	\$37.00	\$37.00
L222	Things That Go Together (Printed) [Laminate or Laminate & Cut:Laminate & Cut]	1	\$22.00	\$22.00
L224	Opposites (Printed) [Laminate or Laminate & Cut:Laminate & Cut]	1	\$33.00	\$33.00
L225	Transportation Around the World (Printed) [Laminate or Laminate & Cut:Laminate & Cut]	1	\$48.00	\$48.00
L227	Sorting and Classifying (Printed) [Laminate or Laminate & Cut:Laminate & Cut]	1	\$30.00	\$30.00
L281	Children's Clothing (Printed) [Laminate or Laminate & Cut:Laminate & Cut]	1	\$36.00	\$36.00
L284	Careers (Printed) [Laminate or Laminate & Cut:Laminate & Cut]	1	\$20.00	\$20.00
L303	Adjective Picture Cards (Printed) [Laminate or Laminate & Cut:Laminate & Cut]	1	\$29.00	\$29.00
L432	Language Classification Cards (Printed) [Laminate or Laminate & Cut:Laminate & Cut]	1	\$99.00	\$99.00
L433	Whole to Part Matching Cards (Printed) [Laminate or Laminate & Cut:Laminate & Cut]	1	\$13.00	\$13.00
L434	Rhyming Labels (Printed) [Laminate or Laminate & Cut:Laminate & Cut]	1	\$19.00	\$19.00
L435	Picture to Silhouette Matching Cards (Printed) [Laminate or Laminate & Cut:Laminate & Cut]	1	\$19.00	\$19.00
L436	Opposites Pictures and Labels (Printed) [Laminate or Laminate & Cut:Laminate & Cut]	1	\$37.00	\$37.00
L437	Picture to Outline Matching Cards (Printed) [Laminate or Laminate & Cut:Laminate & Cut]	1	\$19.00	\$19.00

L438	Figure-Ground Matching Cards (Printed) [Laminate or Laminate & Cut:Laminate & Cut]	1	\$19.00	\$19.00
L439	Association Cards: Things That Go Together (Printed) [Laminate or Laminate & Cut:Laminate & Cut]	1	\$19.00	\$19.00
L440	Color Matching Labels (Printed) [Laminate or Laminate & Cut:Laminate & Cut]	1	\$14.00	\$14.00
L615	Rhyming Words Cards (Printed) [Laminate or Laminate & Cut:Laminate & Cut]	1	\$29.00	\$29.00
M11.A	Teen Boards & Beads Activities (10-19) (Printed) [Laminate or Laminate & Cut:Laminate & Cut]	1	\$24.00	\$24.00
M12.F	Tens Boards & Beads Activities (70-79) (Printed) [Laminate or Laminate & Cut:Laminate & Cut]	1	\$26.00	\$26.00
M13.C	Hundred Board Activity Set (Printed) [Laminate or Laminate & Cut:Laminate & Cut]	1	\$45.00	\$45.00
M15.A	Subtraction Strip Board Activity Set 1 (Printed) [Laminate or Laminate & Cut:Laminate & Cut]	1	\$29.99	\$29.99
M17.01	Division Board Exercise Cards (Printed) [Laminate or Laminate & Cut:Laminate & Cut]	1	\$54.00	\$54.00
M32.A	Addition Snake Game Charts (Printed, Laminated and Cut)	1	\$23.50	\$23.50
M39.B	Tens Boards Activity Cards (Printed) [Laminate or Laminate & Cut:Laminate & Cut]	1	\$8.00	\$8.00
M64.02	Small Bead Frame Exercise Set (Printed) [Laminate or Laminate & Cut:Laminate & Cut]	1	\$27.00	\$27.00
M81.01	Dot Exercise Sheets (Printed)	1	\$20.00	\$20.00
M92.03	Golden Bead Materials (Quantity and Symbol) Addition Activity Set #2 (2A-2D) (Printed) [Laminate or Laminate & Cut:Laminate & Cut]	1	\$61.00	\$61.00
M92.06	Golden Bead Materials - Multiplication Activity Set [Laminate or Laminate & Cut:Laminate & Cut]	1	\$57.99	\$57.99
M115.A	Extension to Short Bead Stair Chart (Printed) [Laminate or Laminate & Cut:Laminate & Cut]	1	\$17.00	\$17.00

M265.C	Level 1 Geometry Activity Cards (Printed) [Laminate or Laminate & Cut:Laminate & Cut]	1	\$73.00	\$73.00
S38.A	Charts for Geometric Cabinet Drawers (Printed) [Laminate or Laminate & Cut:Laminate]	1	\$24.00	\$24.00
M01.E	Number Rods - (Extension Cards) [Laminate or Laminate & Cut:Laminate & Cut]	1	\$43.99	\$43.99
M12.A	Tens Boards & Beads Activities (20-29) (Printed) [Laminate or Laminate & Cut:Laminate & Cut]	1	\$26.00	\$26.00
M12.D	Tens Boards & Beads Activities (50-59) (Printed) [Laminate or Laminate & Cut:Laminate & Cut]	1	\$26.00	\$26.00
M12.G	Tens Boards & Beads Activities (80-89) (Printed) [Laminate or Laminate & Cut:Laminate & Cut]	1	\$26.00	\$26.00
M14.A	Addition Strip Board Activity-1 (Printed) [Laminate or Laminate & Cut:Laminate & Cut]	1	\$48.00	\$48.00
M15.B	Subtraction Strip Board Activity Set 2 (Printed) [Laminate or Laminate & Cut:Laminate & Cut]	1	\$20.99	\$20.99
M28.01	Stamp Game Activity Set (Printed) [Laminate or Laminate & Cut:Laminate & Cut]	1	\$72.00	\$72.00
M33.A	Subtraction Snake Game Charts (Printed, Laminated and Cut)	1	\$23.50	\$23.50
M26.02	Decanomial Bead Box Task Cards (Printed) [Laminate or Laminate & Cut:Laminate & Cut]	1	\$60.99	\$60.99
M65.01	Large Bead Frame Paper (Printed)	1	\$15.00	\$15.00
M92.01	Introduction to the Decimal System (1A and 1B) (Printed) [Laminate or Laminate & Cut:Laminate & Cut]	1	\$45.00	\$45.00
M92.04	Golden Bead Materials (Quantity) Subtraction Activity Set #1 (A1-D1) (Printed) [Laminate or Laminate & Cut:Laminate & Cut]	1	\$61.00	\$61.00
M92.07	Golden Bead Materials - Division Activity Set [Laminate or Laminate & Cut:Laminate & Cut]	1	\$63.99	\$63.99

M115.B	Short Bead Stair Combination Activity Set-1 (Printed) [Laminate or Laminate & Cut:Laminate & Cut]	1	\$27.00	\$27.00
S17.01	Blue Constructive Triangles Exercise Set (Printed) [Laminate or Laminate & Cut:Laminate & Cut]	1	\$22.00	\$22.00
S38.04.PL	Geometric Cabinet Control Chart - (Printed and Laminated)	1	\$12.00	\$12.00
M12.B	Tens Boards & Beads Activities (30-39) (Printed) [Laminate or Laminate & Cut:Laminate & Cut]	1	\$26.00	\$26.00
M12.E	Tens Boards & Beads Activities (60-69) (Printed) [Laminate or Laminate & Cut:Laminate & Cut]	1	\$26.00	\$26.00
M12.H	Tens Boards & Beads Activities (90-99) (Printed) [Laminate or Laminate & Cut:Laminate & Cut]	1	\$26.00	\$26.00
M14.B	Addition Strip Board Activity-2 (Printed) [Laminate or Laminate & Cut:Laminate & Cut]	1	\$48.00	\$48.00
M16.01	Multiplication Board Activity Set (Printed) [Laminate or Laminate & Cut:Laminate & Cut]	1	\$54.00	\$54.00
M30.01	Adding Fractions: Common Denominators (Printed) [Laminate or Laminate & Cut:Laminate & Cut]	1	\$104.00	\$104.00
M39.A	Tens Beads Activity Cards (Printed) [Laminate or Laminate & Cut:Laminate & Cut]	1	\$9.00	\$9.00
M64.01	Small Bead Frame Paper (Printed)	1	\$15.00	\$15.00
M65.02	Large Bead Frame Activity Set (Printed) [Laminate or Laminate & Cut:Laminate & Cut]	1	\$39.00	\$39.00
M92.02	Golden Bead Materials (Quantity Addition Activity Set #1 (1A-1D) (Printed) [Laminate or Laminate & Cut:Laminate & Cut]	1	\$61.00	\$61.00
M92.05	Golden Bead Materials (Quantity and Symbol) Subtraction Activity Set #2 (A1-D1) (Printed) [Laminate or Laminate & Cut:Laminate & Cut]	1	\$61.00	\$61.00
S16.02	Constructive Triangles (Task Cards) [Laminate or Laminate & Cut:Laminate & Cut]	1	\$54.99	\$54.99

M115.C	Short Bead Stair Combination Activity Set-2 (Printed) [Laminate or Laminate & Cut:Laminate & Cut]	1	\$22.00	\$22.00
S38.01	Geometric Cabinet Nomenclature Cards (3-6) (Printed) [Laminate or Laminate & Cut:Laminate & Cut]	1	\$36.00	\$36.00
S46.01	Geometric Solids Nomenclature Cards 3-6 (Printed) [Laminate or Laminate & Cut:Laminate & Cut]	1	\$20.99	\$20.99
AMS71-12.02	Solid Birch Classroom Chairs 12" High (Set of 2)	10	\$252.00	\$2,520.00
AMS902.20	Solid Birch Classroom Table - Rectangle - 24" x 48" (20" Legs)	5	\$312.90	\$1,564.50
^ AMS49-20	Table Legs (Height 20")	5	\$0.00	\$0.00
^ AMS902	Solid Birch Classroom Table - Rectangle - 24" x 48" (Table Only)	5	\$0.00	\$0.00
DSC-00	Package Discount for Additional Items 5%	1	-\$378.92	-\$378.92

Subtotal: \$13,511.49

Tax: \$0.00

Shipping & Handling: \$1,125.00

Grand Total: \$14,636.49

Maria Montessori Academy Board of Directors Meeting

Date: March 12, 2026

Time: 4:00 PM

Location: <https://us02web.zoom.us/j/86790945346>



The mission of Maria Montessori Academy is to provide an individualized grade K-9 education that promotes academic excellence founded on the authentic philosophy of Dr. Maria Montessori. MMA will craft each child's education in partnership with educators and parents to achieve higher levels of academic, personal and social achievement, thereby preparing students to become constructive contributors to their community.

AGENDA

CALL TO ORDER

CONSENT ITEMS

- 01.28.2026 Board Meeting Minutes

PUBLIC COMMENT

- 2026/2027 Fee Schedule

REPORTS

- Director's Report
- Finance Report

VOTING & DISCUSSION ITEMS

- 2026/2027 Fee Schedule
- School Land Trust Plan
- Ratify Bargreen Ellingson Purchase
- Helpside Professional Employer Agreement
- Carpet Purchase
- Alison's Montessori Quote
- Speech Therapy Contract
- Policies:
 - AI Policy
 - Fee Waiver Policy

CALENDARING

- Next Board Meeting May 14, 2026 @ 4:00pm

ADJOURN

In compliance with the Americans with Disabilities Act, persons needing auxiliary communicative aids and services for these meetings should call 801-444-9378. One or more board members may participate electronically or telephonically pursuant to UCA 52-4-207.

BARGREEN ELLINGSON

FOODSERVICE SUPPLY & DESIGN

www.bargreen.com • 1.866.722.2665

REMIT TO: Lockbox 310055, P.O.Box 94328, Seattle WA 98124-6628
THIS IS YOUR INVOICE - PLEASE PROCESS FOR PAYMENT

Federal ID # 91-0715309

INVOICE

Invoice no	Invoice date	Due date
012276601	Jan 26, 2026	Feb 25, 2026
Branch		
055 SALT LAKE CITY		
To pay		
USD 15,113.84		

Customer Name	
MARIA MONTESSORI ACADEMY	
Bill To Address	
MARIA MONTESSORI ACADEMY 2505 N 200 E NORTH OGDEN, UT 84414	
Your order no	Our reference
Order number	Salesperson
2104141998	Paul Kuhn
Order date	Sales Support Contact
Dec 9, 2025	PMOLINA

Customer	Payer
30928272	30928272
Delivery Address	
MARIA MONTESSORI ACADEMY 2505 N 200 E NORTH OGDEN, UT 84414	
Address Phone	Customer Phone
	385-439-0574
Payment terms	Route
NET 30	155NO
Delivery method	Delivery number
OUR TRUCK	12247657

Line	Item number Alias number	Name	U/M	Quantity			Unit Price	Amount
				Ordered	Shipped	Backordered		
40	NRLKLB74810C+	KOLD LOCKER 8X10X7 FT 4 INCH COOLER 8X10X7 FT 4 INCH CAPSULE PACK INDOOR NO FLOOR S/N 26010075 (BOX) 766247 (REFRIGERATION)	EA	1	1	0	12,886.41	12,886.41
50	NRL5YRCOMP+	5 YEAR COMPRESSOR WARRANTY	EA	1	1	0	232.94	232.94
60	NRL36INCHDOOR+	36" DOOR	EA	1	1	0	79.21	79.21

Charge	Description	Amount
INST	INSTALL	800.00

At Bargreen Ellingson, we're committed to fair, transparent pricing.

A 2% surcharge applies to credit card payments. This helps prevent across-the-board price increases by offsetting processing costs, allowing us to keep pricing fair and continue investing in the quality and service you've come to expect.

Want to avoid surcharges? ACH, debit, checks, and cash payments are not affected.

BARGREEN ELLINGSON

FOODSERVICE SUPPLY & DESIGN

www.bargreen.com • 1.866.722.2665

REMIT TO: Lockbox 310055, P.O.Box 94328, Seattle WA 98124-6628
THIS IS YOUR INVOICE - PLEASE PROCESS FOR PAYMENT

Federal ID # 91-0715309

INVOICE

Invoice no	Invoice date	Due date
012276601	Jan 26, 2026	Feb 25, 2026
Branch		
055 SALT LAKE CITY		
To pay		
USD 15,113.84		

For Billing Inquiries Please Call: 253.722.2600

Our Guarantee: In foodservice, things don't always go as planned. When those things happen, Bargreen Ellingson guarantees to make it right. Our staff is given the power to resolve your issue. If they can't, or you aren't completely satisfied, feel free to call our President, David Ellingson, at 253.234.1400.

Signature _____ Print Name _____ Date _____

TERMS OF SALE: THE SALE OF THE MATERIALS DESCRIBED ON THIS INVOICE ARE SUBJECT TO THE FOLLOWING STANDARD CONDITIONS.

1. Accounts are due and payable on or before 30 days following date of purchase unless otherwise specified.
2. 1.5% per month penalty on all past due accounts.
3. Customer agrees to pay reasonable attorney's fees and other costs incurred at collection.
4. The property described above is hereby pledged as security for the debt incurred for the purchase price thereof and a security interest is hereby vested in the seller therein.
5. 25% handling charge on all returned merchandise. Special order merchandise is not returnable.
6. Claims must be made within three days of delivery. Retention of materials beyond 3 days for inspection constitutes acceptance.
7. Use of materials constitutes a waiver of all rights and remedies against Bargreen Ellingson.
8. The customer's exclusive remedy in the event that shipped material or goods does not meet invoice specifications shall consist of one of the following:
 - a. Replacement of all unused material or goods, or
 - b. Refund of the pro-rata purchase price upon return on unused materials or goods.

Item value	\$13,198.56
Charge amount	\$800.00
Sales tax	\$1,115.28

To pay	USD	\$15,113.84
---------------	------------	--------------------

Scan here to pay online:
Or go to <https://pay.bargreen.io>

