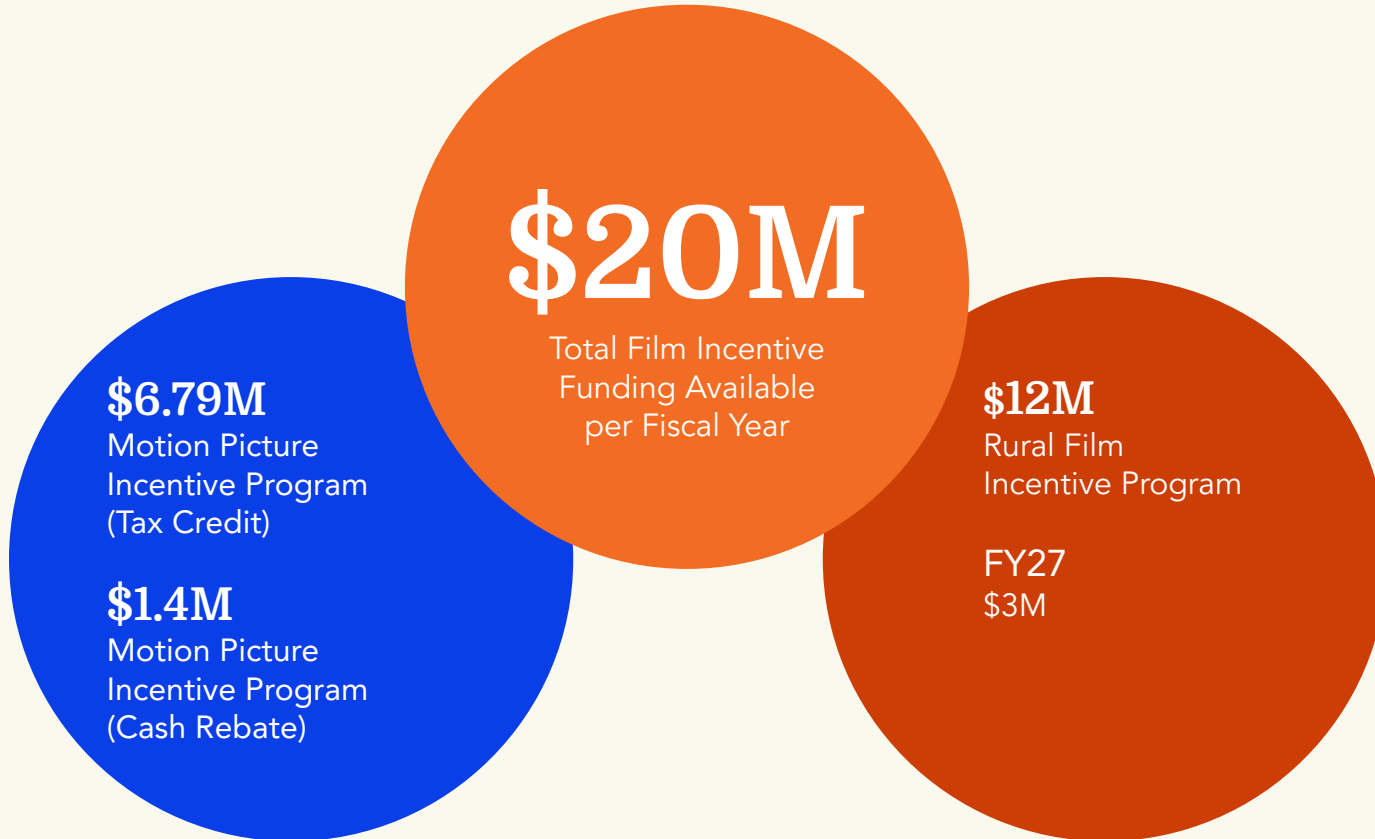


An aerial photograph of a snowy mountain landscape at Brian Head Ski Resort. The scene is dominated by snow-covered slopes, dense evergreen forests, and a ski lift system with several chairs visible. The lighting is soft and golden, suggesting early morning or late afternoon. The sky is a clear, pale blue. The overall atmosphere is serene and picturesque.

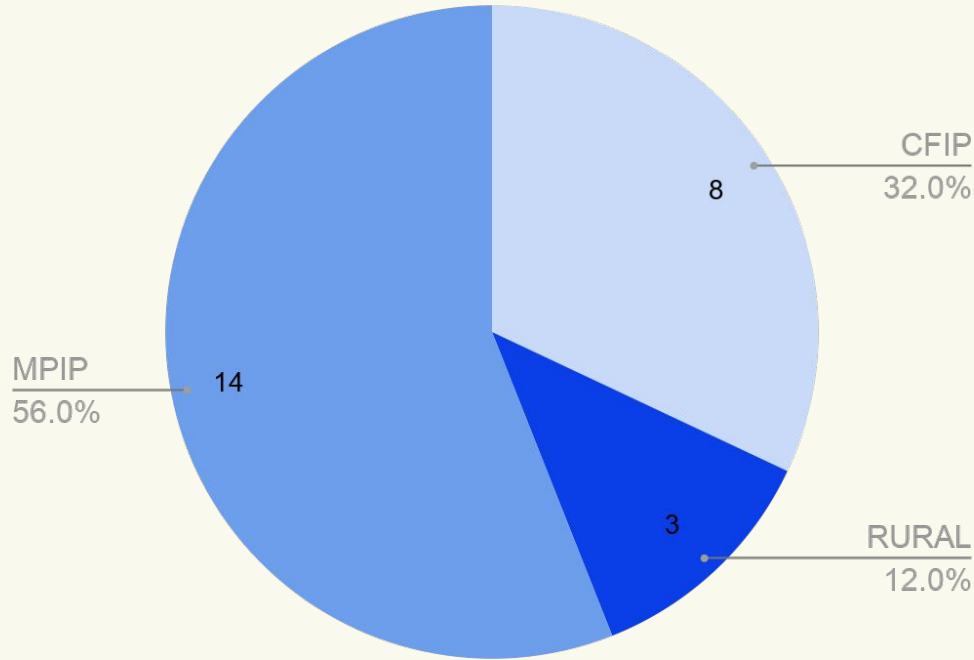
Utah Film Commission March 2026

Brian Head Ski Resort

Utah Film Incentive Funding



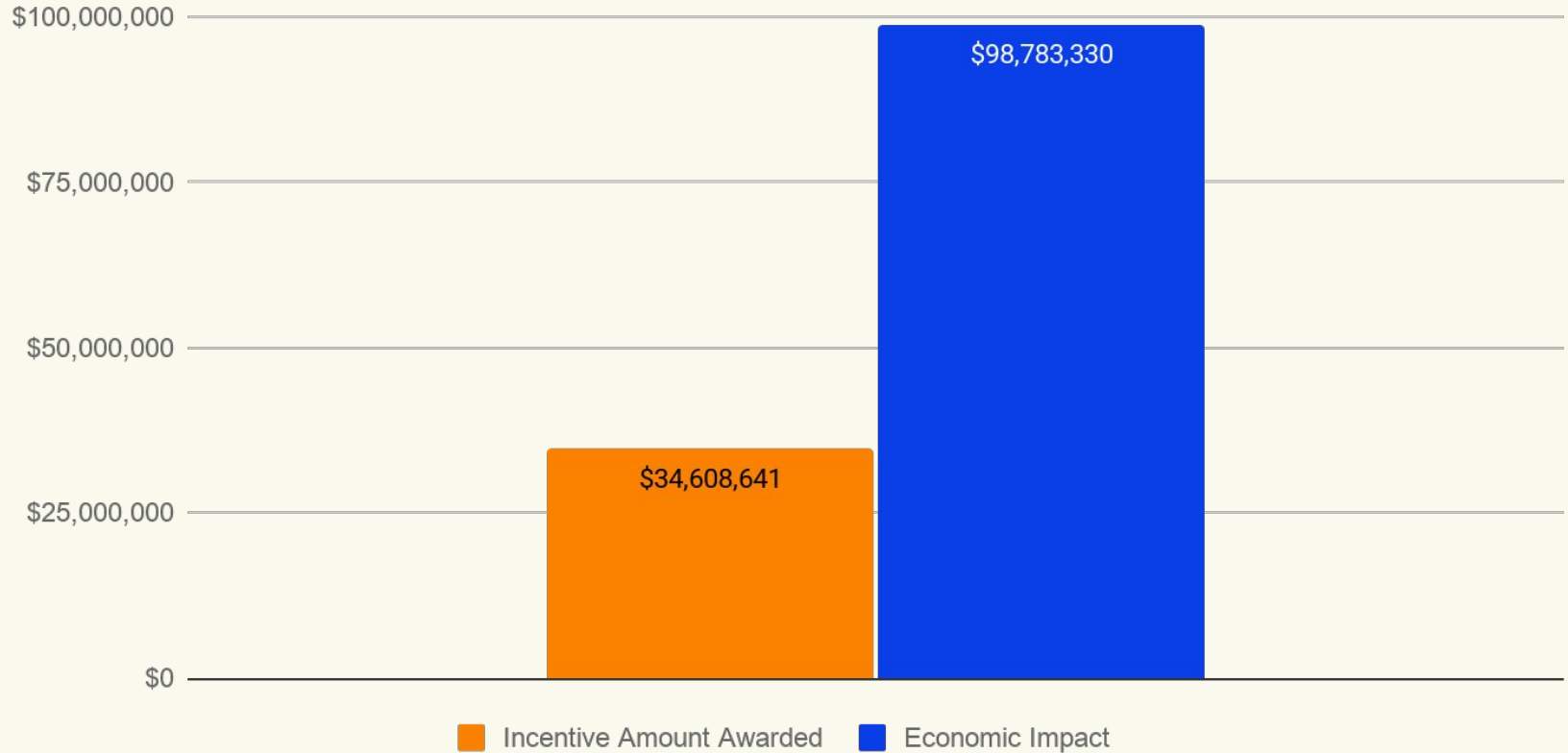
25 Approved Projects FY26



Filming locations include Davis, Grand, Juab, Kane, Morgan, Salt Lake, Summit, Tooele, Utah, Uintah, Wasatch, Washington, Wayne, & Weber counties



Incentive v. Economic Impact FY26





Incentive Applications

CFIP

*Creation: Rita Deanin Abbey
Miracles in Motion
Noah's Big Adventure*

MPIP

*Lulubug's Garden Season 2
Salt & Honey
One Beautiful Life
Untitled Warner Bros. Production*

Creation: Rita Deanin Abbey / Community Film Incentive Program

Production Highlights:	Documentary that explores the life and artistic legacy of pioneering American artist, Rita Deanin Abbey
Distribution:	Festival Circuit
Locations (County):	Emery, Grand, Kane, & Washington
Percentage Shot in Utah:	85%
Estimated Jobs:	Cast & Crew: 4
Estimated Spend:	\$150,000
Maximum Incentive:	\$30,000 (20% - Cash)
Production Dates (including Prep & Post-Production)	January 2026 – July 2026

***Miracles in Motion* / Community Film Incentive Program**

Production Highlights:	Local producer Michelle Moore is taking on her first big project
Distribution:	Streaming
Locations (County):	Davis, Salt Lake, Utah & Wasatch
Percentage Shot in Utah:	100%
Estimated Jobs:	Cast & Crew: 152 Extras: 10
Estimated Spend:	\$164,400
Maximum Incentive:	\$32,880 (20% - Cash)
Production Dates (including Prep & Post-Production)	March 2026 – January 2027

***Noah's Big Adventure* / Community Film Incentive Program**

Production Highlights:	Director Britt Sady's son with down syndrome will play the main character
Distribution:	Festival Circuit
Locations (County):	Summit
Percentage Shot in Utah:	100%
Estimated Jobs:	Cast & Crew: 27 Extras: 20
Estimated Spend:	\$230,000
Maximum Incentive:	\$46,000 (20% - Cash)
Production Dates (including Prep & Post-Production)	February 2026 – March 2027

Lulubug's Garden Season 2 / Motion Picture Incentive Program

Production Highlights:	Local production team bringing us the 2nd season of this children's show that teaches mental health with puppets
Distribution:	YouTube
Locations (County):	Utah
Percentage Shot in Utah:	100%
Estimated Jobs:	Cast & Crew: 47
Estimated Spend:	\$1,798,572
Maximum Incentive:	\$449,643 (25% - Tax Credit)
Production Dates (including Prep & Post-Production)	February 2026 – November 2026

***One Beautiful Life* / Motion Picture Incentive Program**

Production Highlights:	Based on local family YouTuber Jenny Phillips' life
Distribution:	Independent
Locations (County):	Davis, Salt Lake, Summit, & Wasatch
Percentage Shot in Utah:	100%
Estimated Jobs:	Cast & Crew: 107 Extras: 57
Estimated Spend:	\$3,500,000
Maximum Incentive:	\$875,000 (25% - Tax Credit)
Production Dates (including Prep & Post-Production)	March 2026 – September 2026

Untitled Warner Bros. Production / Motion Picture Incentive Program

Production Highlights:	Warner Bros. Production bringing small chunk to Utah
Distribution:	Theatrical
Locations (County):	TBD
Percentage Shot in Utah:	10%
Estimated Jobs:	Cast & Crew: 175
Estimated Spend:	\$4,618,869
Maximum Incentive:	\$1,154,717 (25% - Tax Credit)
Production Dates (including Prep & Post-Production)	Spring/Summer 2026

***Salt & Honey* / Motion Picture Incentive Program**

Production Highlights:	Helper for Helper, Amy Redford is directing alongside Jennie Morris
Distribution:	Theatrical
Locations (County):	Carbon & Sevier
Percentage Shot in Utah:	100%
Estimated Jobs:	Cast & Crew: 94 Extras: 63
Estimated Spend:	\$2,154,553
Maximum Incentive:	\$538,638 (25% - Tax Credit)
Production Dates (including Prep & Post-Production)	February 2026 – June 2026

Utah Spend / Incentive Approval Overview

Approve a total of **\$3,126,878** for incentives for the following productions, which have met the criteria defined by statute.

Production	Estimated Utah Spend	Incentive Amount Per Production	Locations (Counties)
<i>Creation: Rita Deanin Abbey</i>	\$150,000	\$30,000 - 20%	Emery, Grand, Kane, & Washington
<i>Miracles in Motion</i>	\$164,400	\$32,880 - 20%	Davis, Salt Lake, Utah & Wasatch
<i>Noah's Big Adventure</i>	\$230,000	\$46,000 - 20%	Summit
<i>Lulubug's Garden S2</i>	\$1,798,572	\$449,643 - 25%	Utah
<i>Salt & Honey</i>	\$2,154,553	\$538,638 - 25%	Carbon & Sevier
<i>One Beautiful Life</i>	\$3,500,000	\$875,000 - 25%	Davis, Salt Lake, Summit, & Wasatch
<i>Untitled Warner Bros. Production</i>	\$4,618,869	\$1,154,717 - 25%	TBD
	\$12,616,394 TOTAL Spend	\$3,126,878 TOTAL Incentives	

