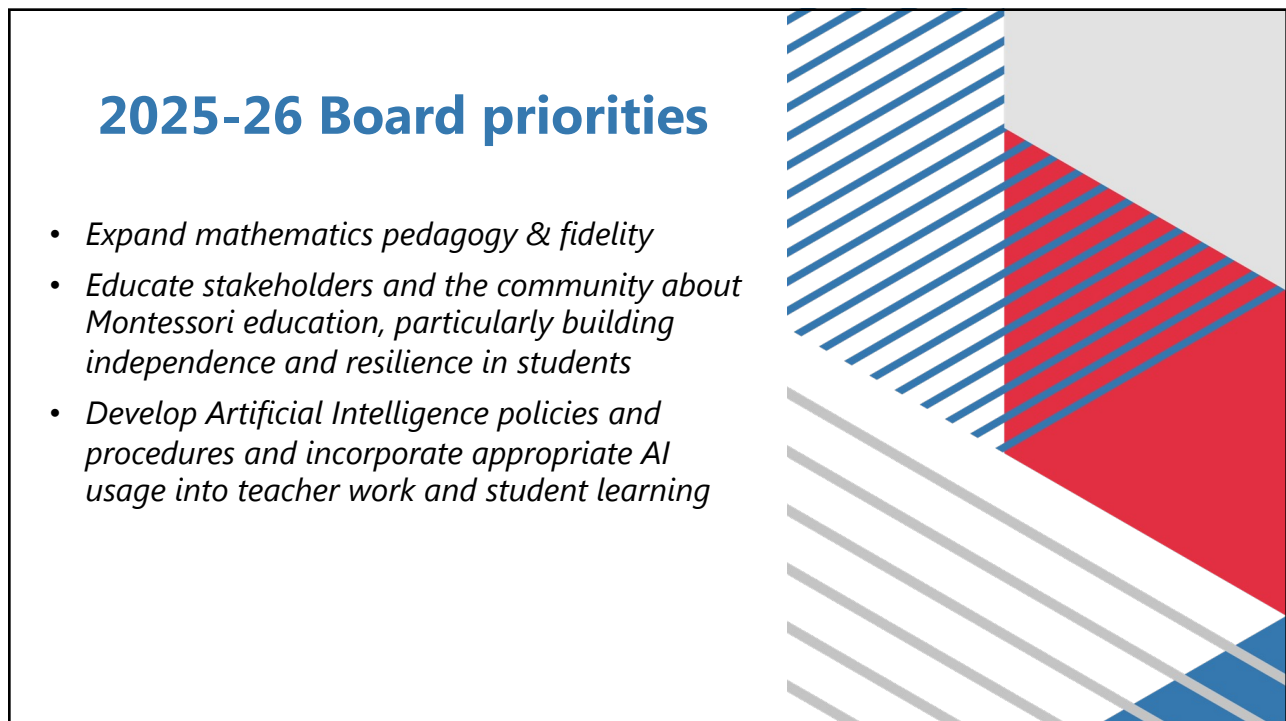




1



2

Montessori Education & Outreach

- *Binderly: "Learn About Montessori" Group*
- *Newsletter: Podcast Episodes*
- *Maria Montessori The Musical*

3

Binderly

Board Virtual Field Trip: Take out your phones!

- *Download the Binderly app*
- *Find our school and add it*
- *Look at the groups available*
- *Request to join the "Learn About Montessori Group"*

4

Monthly Newsletter

Each month, the school newsletter highlights episodes from our school podcast, "Do You See?" and provides a quick link for parents to the episode. Each episode covers a topic pertinent to Montessori education and offers a quick, convenient, audio option for parent education.



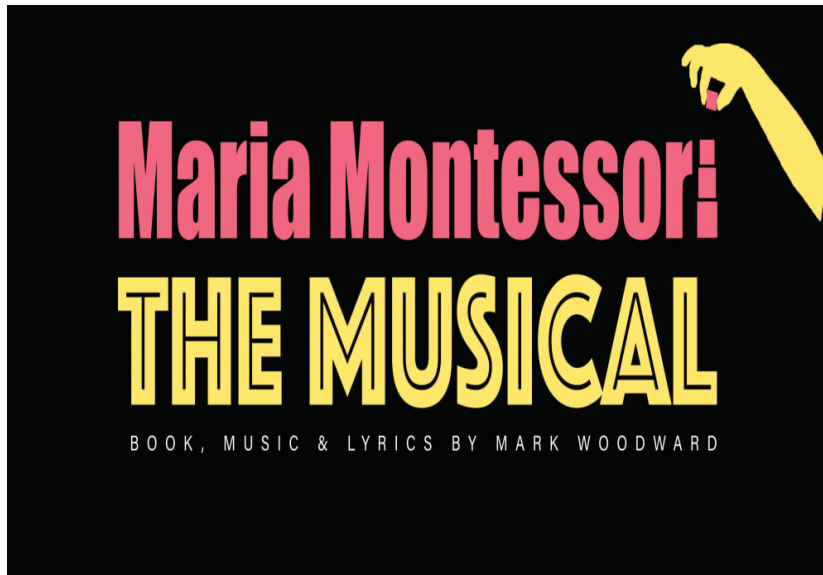
Episode 11: "Montessori 101"

In this episode, Ms. Angie, Ms. Alisha, and Ms. Hailey talk about the essentials of the Montessori method and the difficulty in trying to explain it all quickly, because there is so much to it! With 20/20 hindsight, we postulate that perhaps this should have been Episode 1 instead of Episode 11, and instead of homework, Ms. Angie offers parents a bonus.

Episode 32: "A Lasting Peace"

In this episode, Ms. Angie, Ms. Alisha, and special guest Dr. Lois Bobo discuss Montessori peace education in two parts: (1) the teaching of conflict resolutions skills and (2) the instilling of values inherent in long-term respect for each other while still disagreeing.

5



SAVE THE DATE!

April 17th & 18th

6

Wellness Policy Triennial Progress Report

7

Triennial Progress Report December 2025

Every three years our school Wellness Policy is reviewed by a committee consisting of parents, teachers, administration, counseling, health educators, and the kitchen manager.

Summary: Upon review, the committee found MWMA as fully compliant in every area except for "Physical Activity: PE", which was found to be "Approaching Compliance" due to the constraint of limited gym time during winter months, when elementary classes have a 30-minute period in the gym rather than the 40-60 minutes suggested by the policy.

8

Student Performance Analysis

- *Data Sources*
- *Noteworthy Achievement*
- *Area in Need of Improvement*

9

Data Sources

As part of the school's extensive re-accreditation process this year, student performance data was analyzed longitudinally from the following sources:

- *Utah State School Report Card (2021-2024)*
- *State Charter School Board Five Year Comprehensive Review (2025)*
- *Acadience Reading & Math Assessments: 3 administrations per year (BOY, MOY, EOY) from 2022-23 school year through 2024-25 school year plus 1 administration (BOY) during 2025-26 school year*
- *Utah RISE Assessment: Language, Math, and Science EOY 2020-2025*

10

Noteworthy Achievement

MWMA has shown noteworthy achievement in student growth across all grade levels in all subject areas in the past five years. As part of the Utah State School Board's 5-Year Comprehensive Review, the state contrasted growth at MWMA with other comparable charter schools in Utah and found that MWMA outperformed 19 of the 20 comparable schools in English Language Arts, 19 of the 20 comparable schools in Mathematics, and 18 of the 20 comparable schools in Science.

RISE Growth School Comparison

Compare Schools for School Year 2024

Choose a School Year	Select the school you want to use as a comparison	Choose Comparison Type	More Info
2024	Mountain West Montessori Academy - Mountain West	ACIP	
	English Language Arts	Mathematics	Science
Mountain West Montessori Academy - Mountain West	60	72	62
Summit Academy - Summit Academy - Draper Campus	57	51	55
Ascent Academies of Utah - Ascent Academies of Utah Little	62	72	61
Ascent Academies of Utah - Ascent Academies of Utah Farmington	54	54	50
Leadership Learning Academy - Leadership Learning Academy	62	57	60
Summit Academy - Summit Academy High School	65	49	41
Olympus Charter School - Olympus Charter School	63	58	55
Summit Academy - Summit Academy - Independence	62	47	65
Summit Academy - Summit Academy - Bluffdale	57	65	52
Pyracuse Arts Academy - Pyracuse Arts Academy - Pittsburg	62	62	62
Channing Hall - Channing Hall Academy	55	51	46
Bonneville Academy - Bonneville Academy	62	28	62
Legacy Preparatory Academy - Legacy Preparatory Academy	54	57	50
Thomas Edison - Thomas Edison North	64	58	57
Wasatch Walden Charter School - Wasatch Walden Charter School	50	45	59
Wasatch Peak Academy - Wasatch Peak Academy	59	56	41
American Preparatory Academy - American Preparatory Academy - Salt Lake	54	50	51
Ascent Academies of Utah - Ascent Academies of Utah George	62	51	51
Bear River Charter School - Bear River Charter School	53	41	48
Freedom Preparatory Academy - Freedom Preparatory Academy - Uta	59	46	36
Quest Academy - Quest Academy	55	45	48

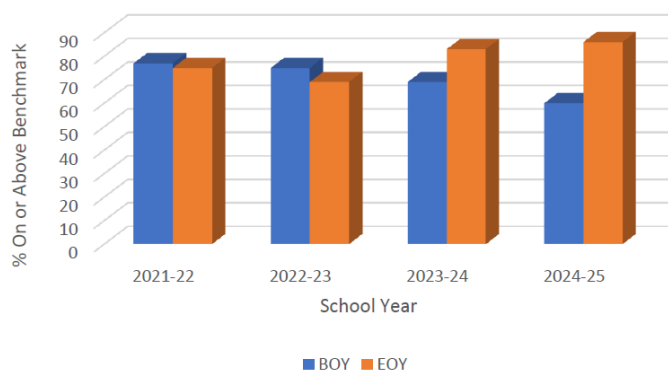
RISE Growth Comparison Summary

- English Language Arts - MWMA outperformed 19 of the 20 comparable schools
- Math - Mountain West Montessori outperformed 19 of the 20 comparable schools
- Science - Mountain West Montessori outperformed 18 of the 20 comparable schools

11

Noteworthy Achievement

Acadience Reading: Kindergarten BOY to EOY

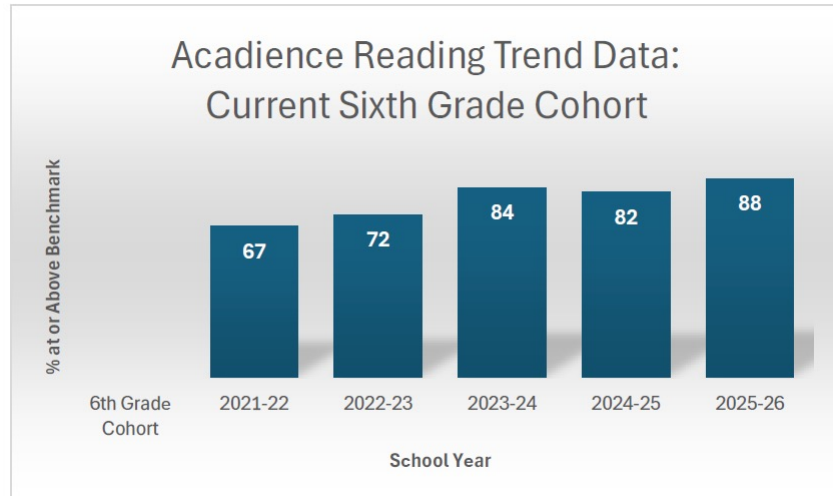


Another outstanding area of achievement is in early literacy outcomes. Student achievement data for reading in MWMA kindergarten students for school years 2021-22 through 2024-25 show an immense increase in the percentage of students at or above benchmark from BOY (beginning of year) to EOY (end of year) over the years.

12

Noteworthy Achievement

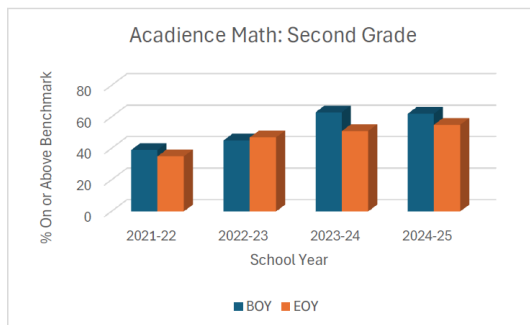
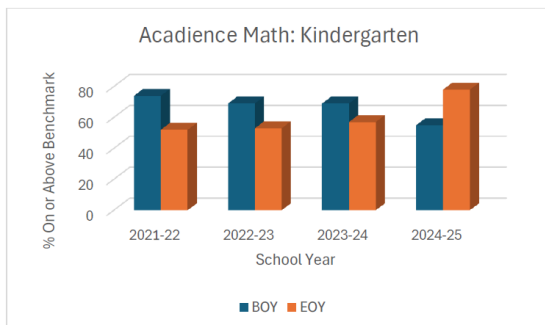
Following data trends for our current cohort of sixth graders over their past five years at MWMA indicates that the percentage of students at or above benchmark for Acadience reading has increased for this cohort from 67% in their second grade year to 88% this year.



13

Area in Need of Improvement

Analysis of longitudinal Acadience Math Assessment data in grades K-6 from 2021-2025 indicate that in kindergarten, first grade, third grade, fourth grade, and sixth grade, the number of students at or above benchmark on composite math scores from Beginning of Year (BOY) to End of Year (EOY) significantly shifted from a decrease to an increase, showing momentous growth above one year's progress in most grade levels. However, in second grade, MWMA data show a trend of declining percentage of students at or above benchmark between BOY and EOY assessment.



14

Highlighting a Strength

Accreditation

15

School Land Trust 2024-25 Report

LITERACY SCORES

Kindergarten BOY 60% EOY 86%
 First Grade BOY 65% EOY 68%
 Second Grade BOY 73% EOY 73%
 Third Grade BOY 74% EOY 78%
 Fourth Grade BOY 67% EOY 69%
 Fifth Grade BOY 72% EOY 82%
 Sixth Grade BOY 84% EOY 84%

K-6 Goal: Increase by 2% from BOY to EOY

MATH SCORES

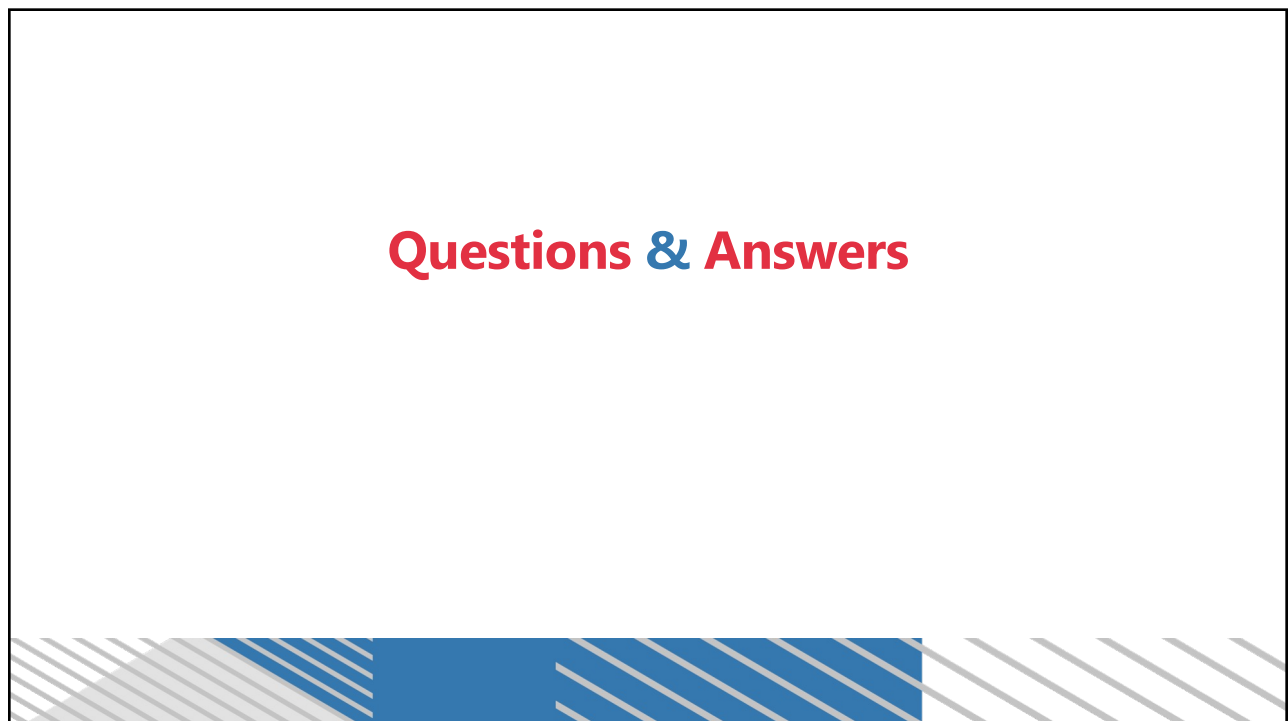
RISE 2023-24 32%
RISE 2024-25 35%

3-8 Goal: Increase by 1% to EOY

16



17



18