

# PUBLIC WORKS

UDOT 1600 SOUTH WIDENING PHASE 3  
- CORRIDOR BETTERMENTS



## 1600 South Criteria per General and Dry Creek Area Plans

### Recognizable Identity and Character

# Street Trees and Streetscape

- Subsequent Form Based Code
- Spacing, Type

## Furnishings

- Benches, Trash, Bike Racks

# Landscape

- Ground Plane Vegetation
- Any planter areas

## Lighting

- Pedestrian and Vehicular
- Banners, Art, Signage

## Street Trees & Streetscape Design

In order to create a recognizable identity and character to the 1600 South Corridor and create distinct district identities, street trees on the corridors are recommended to comply with a list provided for street tree and median tree selection as developed in the subsequent form based code. All new and existing streets will be lined with a consistent and appropriate planting of trees and street scape elements to establish tree canopy for a sense of identity and walkability along the corridor.

The following standards may apply to the installation of street trees.

- **Street Tree Type**

Generally large to medium deciduous shade trees to be determined by form based code

- **Street Tree Spacing**

Large trees can be spaced a minimum of 30 feet on center and no more than 50 feet on center. Medium trees can be spaced a minimum of 20 feet on center and no more than 30 feet on center. Spacing will be dependant on street type as determined by form based code.

## Street Furnishings

Benches, seat walls, planters, planter fences, trash receptacles, and bicycle racks at the least shall be cohesive in design and provide branding and identity to the corridor.

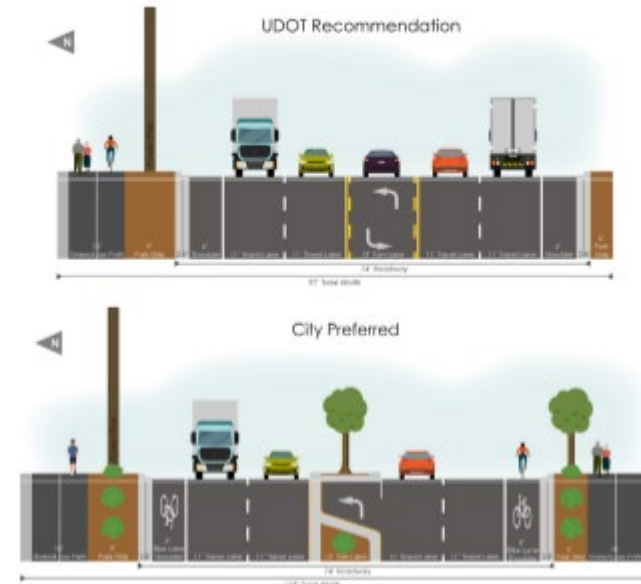
## Landscape Design

Ground plane vegetation shall be designated for any landscape bed areas, planter areas, and tree wells.

## Lighting

The 1600 South corridor shall have a consistent and recognizable pedestrian and vehicular lighting that will provide character and identity to the street. Identity Elements. Any other elements designed to establish the identity of the Corridor, such as banners, pavement markers, artwork, or signage, shall be included in the street scape design.

## 1600 South Corridor





## UDOT 1600 SOUTH WIDENING PHASE 3 - I-15 TO SR51 BETTERMENT:

- Public Works Utilities
- Landscape
- Street Lighting



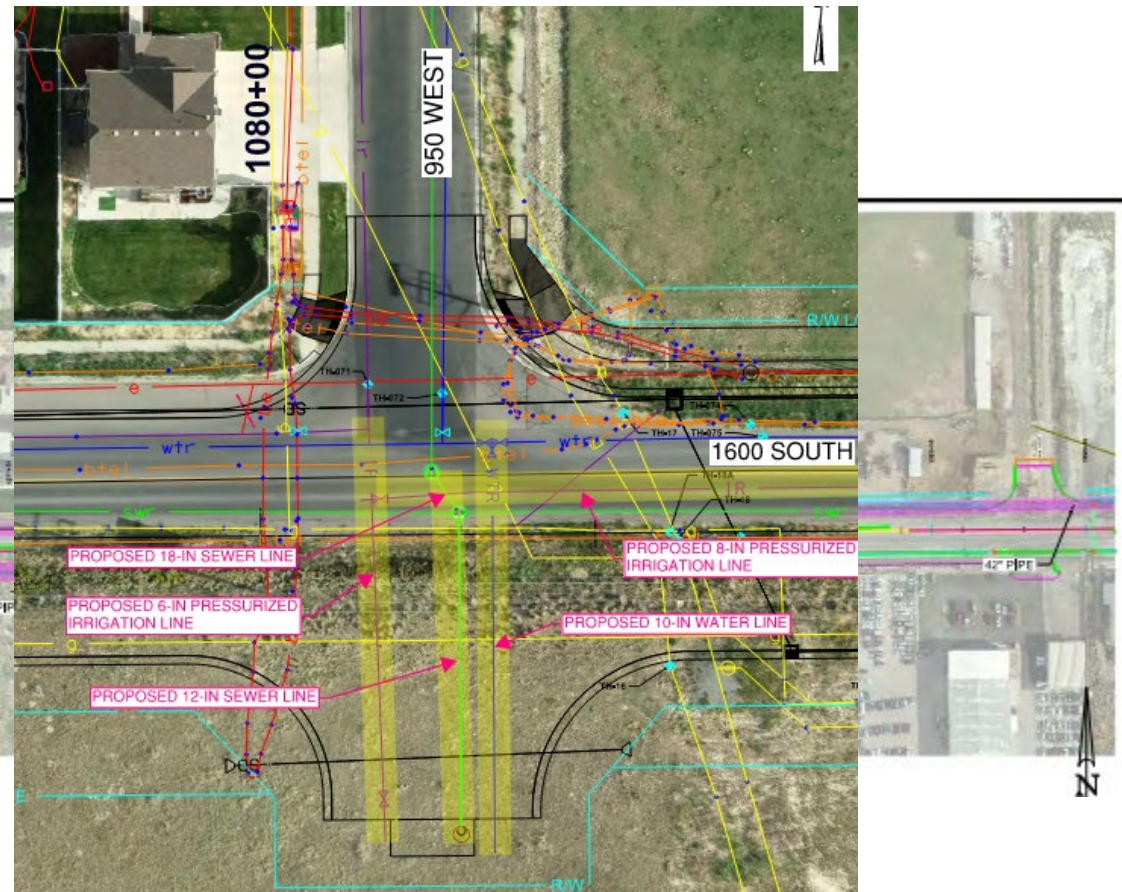
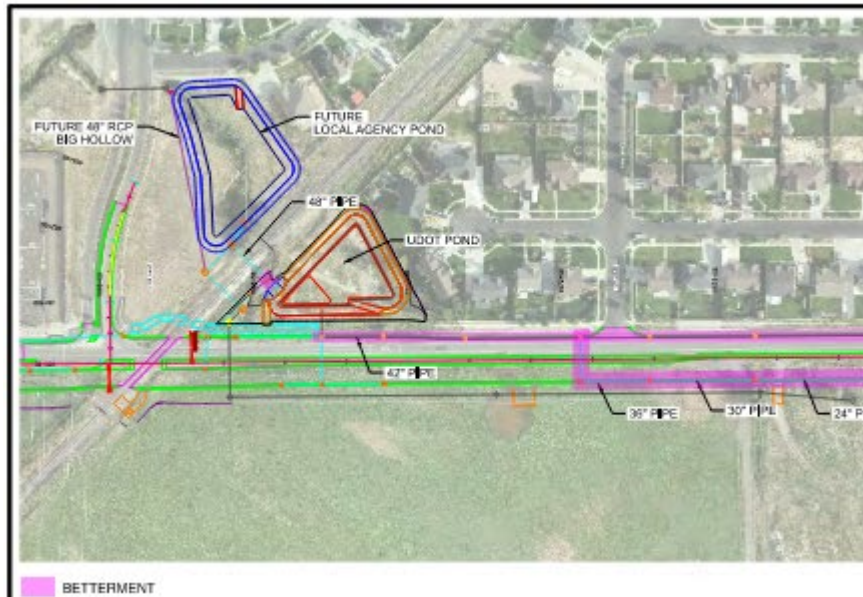




## Public Works Utilities:

Utilities identified in master plans and stubs to adjacent development

• Water & PI	\$1,406,823.18
• Sewer	\$ 343,027.62
• Stormwater	\$ 696,591.81
• Streets	\$ 7,514.97
Total	\$2,453,957.58

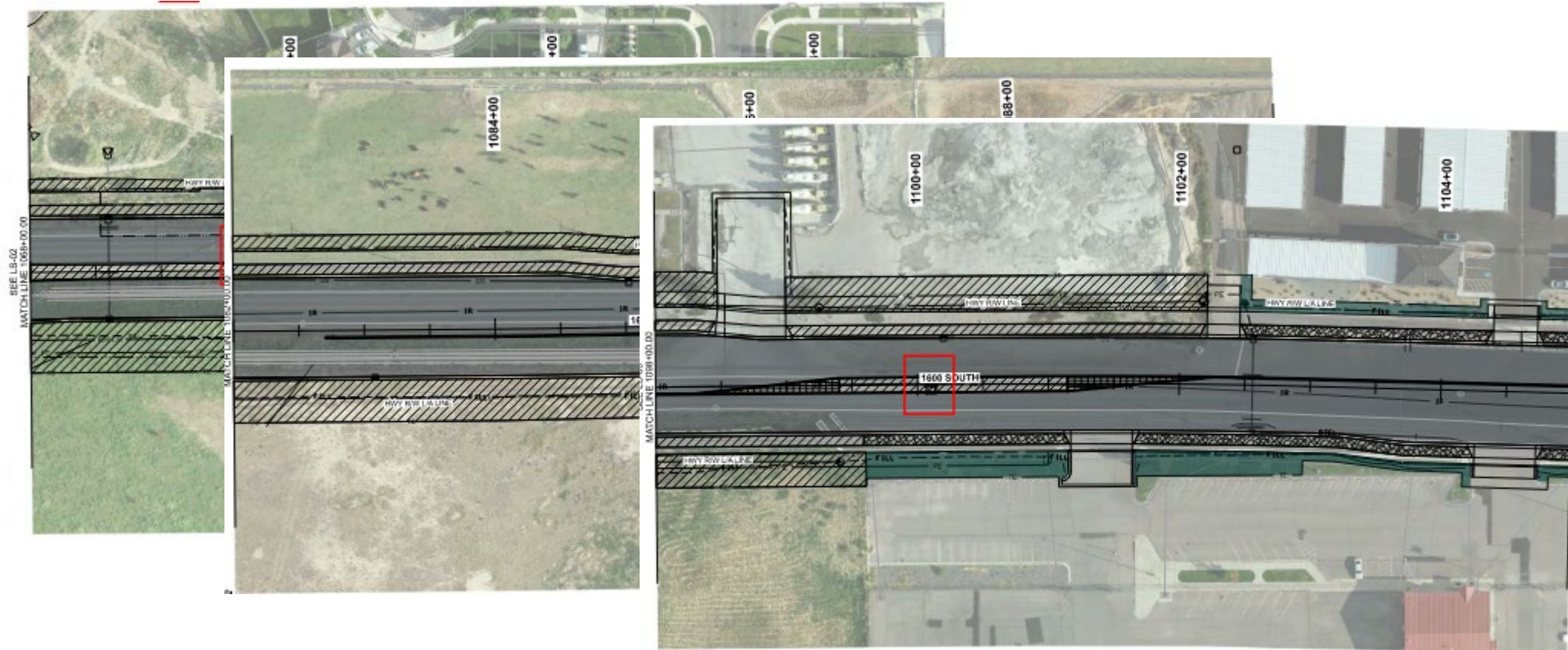




## Landscaping Betterment:

Credit for withholding of concrete in center medians

- Deducted from Betterment total - Improvements by City after UDOT Project
- \$213,630 Credit
- 3 medians from 1200 w to SR51
- Water service to each median

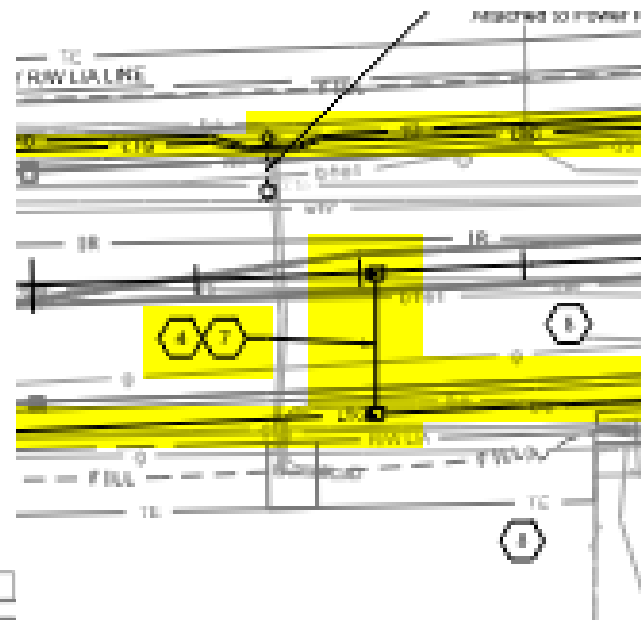






## Underground conduit:

- both sides of 1600 S
- I-15 to SR51
- Conduit to center medians
- \$397,997.99





## UDOT Better Agreement Summary

Total due to UDOT by July 15<sup>th</sup>, 2026

- \$2,638,325.57

Credit for Landscape Betterments (From Public Works)

- \$213,630

Monies to be budgeted in next fiscal year



springville  
ART CITY

## 1600 S. Medians Activation

*References for Art Elements*

# LANDSCAPING VS ART



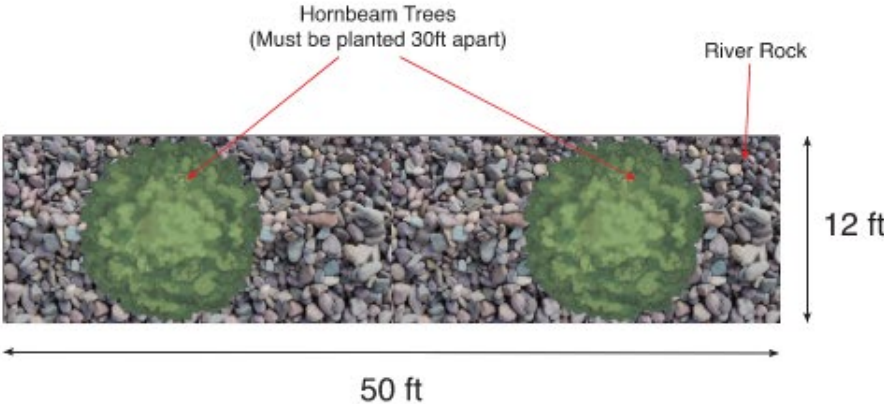




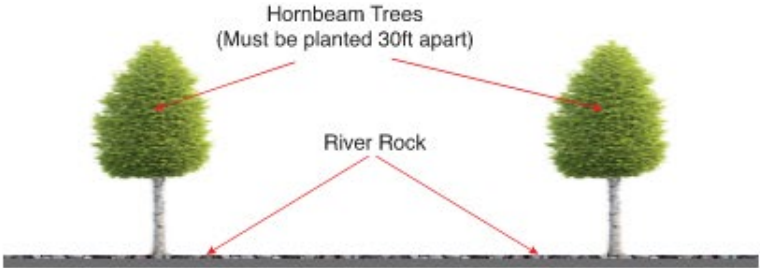
# 1600 S. Medians Activation

Option 1: Trees and River Rock

## Overhead View of Sections:



## Side View of Sections:



## Possible Median Layouts:

Median 1 (150ft)



Median 2 (200ft)



Median 3 (700ft)

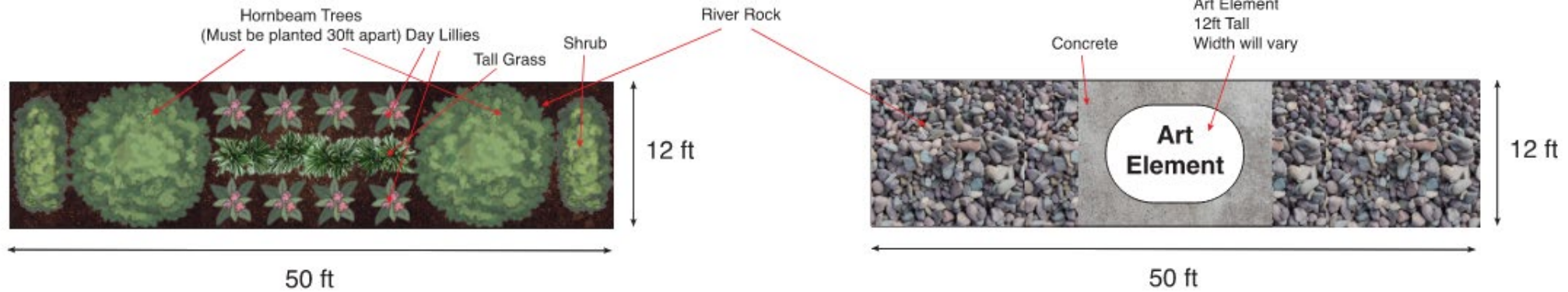




## 1600 S. Medians Activation

Option 2: Art Elements, Trees, Landscaping and River Rock

### Overhead View of Sections:



### Side View of Sections:



### Possible Median Layouts:

Median 1 (150ft)



Median 2 (200ft)



Median 3 (700ft)

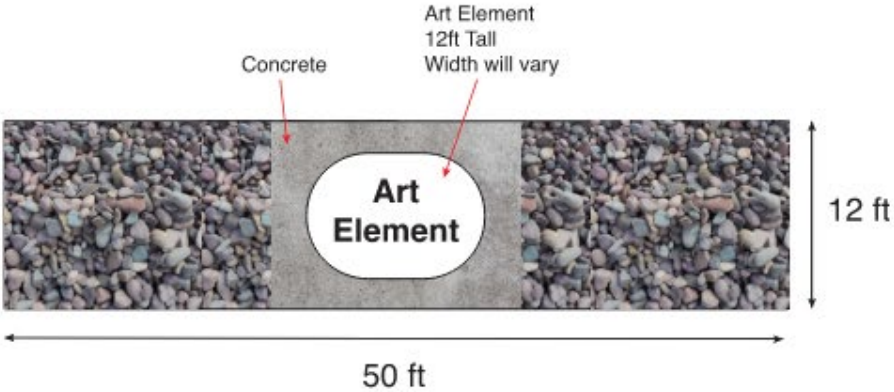




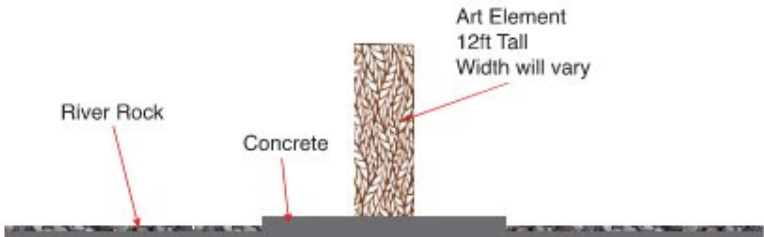
# 1600 S. Medians Activation

Option 3: Art Elements, Landscaping and River Rock

**Overhead View of Sections:**



**Side View of Sections:**



**Possible Median Layouts:**

**Median 1 (150ft)**



**Median 2 (200ft)**



**Median 3 (700ft)**



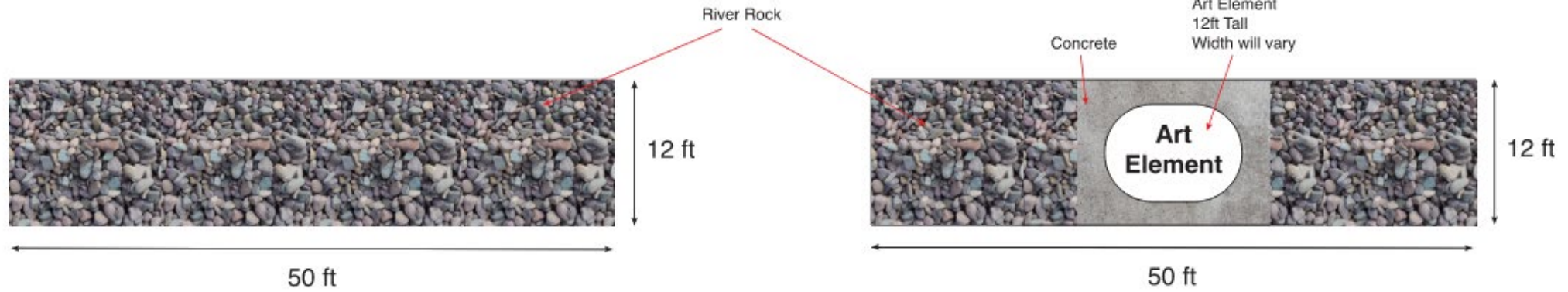




## 1600 S. Medians Activation

Option 4: Art Elements and River Rock

### Overhead View of Sections:



### Side View of Sections:



### Possible Median Layouts:

#### Median 1 (150ft)



#### Median 2 (200ft)



#### Median 3 (700ft)





# 1600 S. Medians Activation

Cost Breakdown



Option 1: Current Standards (Trees & Rock)		
	Install (1x)	Ongoing
Infrastructure/Streets		
Infrastructure/Power		
Landscaping/Parks	\$ 151,000.00	\$ 3,700.00
Art/Public Art	\$ -	\$ -
<b>TOTAL</b>	<b>\$ 151,000.00</b>	<b>\$ 3,700.00</b>



Option 2: Trees and Art		
	Install (1x)	Ongoing
Infrastructure/Streets		
Infrastructure/Power		
Landscaping/Parks	\$ 195,000.00	\$ 20,500.00
Art/Public Art	\$ 108,000.00	\$ 2,000.00
<b>TOTAL</b>	<b>\$ 303,000.00</b>	<b>\$ 22,500.00</b>



Option 3: Landscaping and Art		
	Install (1x)	Ongoing
Infrastructure/Streets		
Infrastructure/Power		
Landscaping/Parks	\$ 123,000.00	\$ 20,500.00
Art/Public Art	\$ 108,000.00	\$ 2,000.00
<b>TOTAL</b>	<b>\$ 231,000.00</b>	<b>\$ 22,500.00</b>



Option 4: Art Only		
	Install (1x)	Ongoing
Infrastructure/Streets		
Infrastructure/Power		
Landscaping/Parks	\$ 60,000.00	\$ 3,700.00
Art/Public Art	\$ 108,000.00	\$ 2,000.00
<b>TOTAL</b>	<b>\$ 168,000.00</b>	<b>\$ 5,700.00</b>





## Street Lighting Discussion

Existing Conditions:(Springville standard cobra head-style)

- (13) on Northside
- (4) on Southside



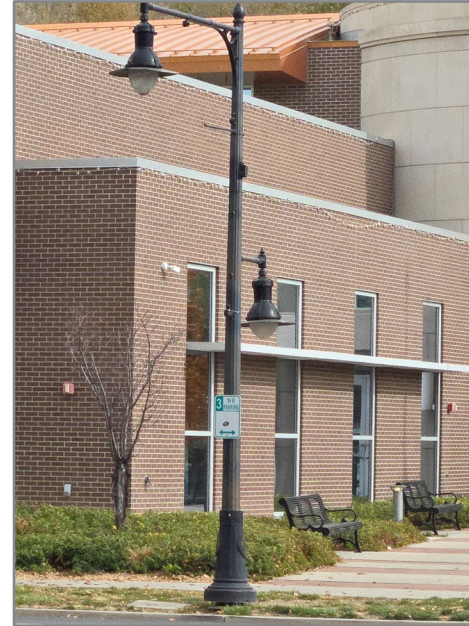
UDOT Betterment:

- Invested \$350 k to partner with UDOT on streetlight conduit installation - north and south sides of 1600 S





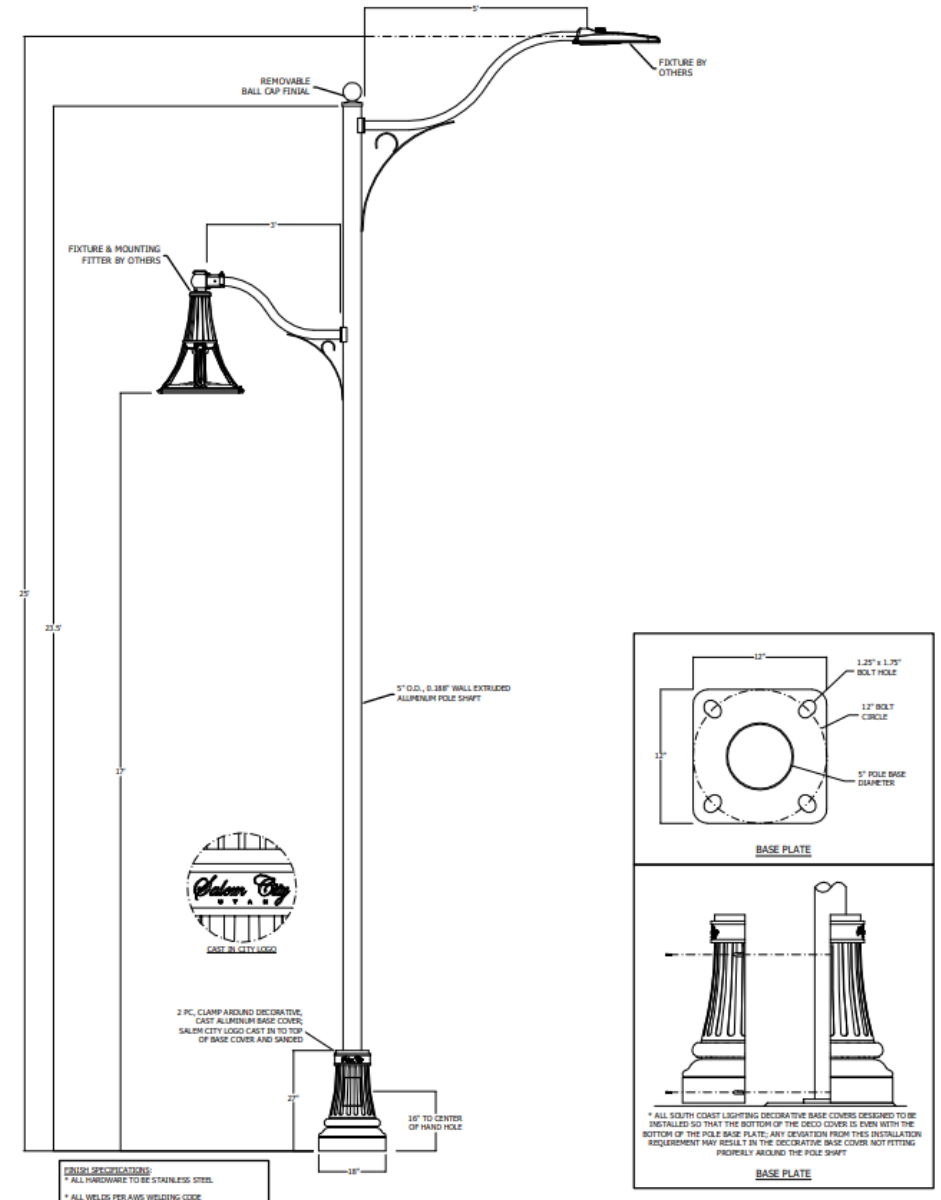
## Street Lighting Style



- Current cobra head style is approximately \$2 k
- Decorative options generally 3 to 4x MORE expensive than the standard streetlight
  - Example - installing decorative lights on one (or alternating) side/s (10,000 feet plus) would require 50 lights and approximately \$350 k.
  - Order up-front and reimburse as developed?



- Decorative light used in Spanish Fork and Salem
  - Taller (26' v. 20' feet) and more powerful than current decorative streetlights.
  - Spacing based on light intensity desired.







## ■ Pedestrian Bollard Lighting

- Estimated \$1,500 each plus connection.
- Spacing based on light intensity desired.
- Approximately 50 foot spacing - \$250,000.





# PUBLIC WORKS

UDOT 1600 SOUTH WIDENING PHASE 3  
- CORRIDOR BETTERMENTS



# QUESTIONS?