



WFRC

**LEGISLATIVE
SESSION
PREVIEW**

Role of WFRC on Capitol Hill

- **Technical Experts** to aid lawmakers in informed decision-making
- **Conveners** of transportation agencies, partners, and local leaders
- **Supporters** of policies, programs, and appropriations that further Utah's Unified Transportation Plan and the Wasatch Choice Vision



Legislative Landscape

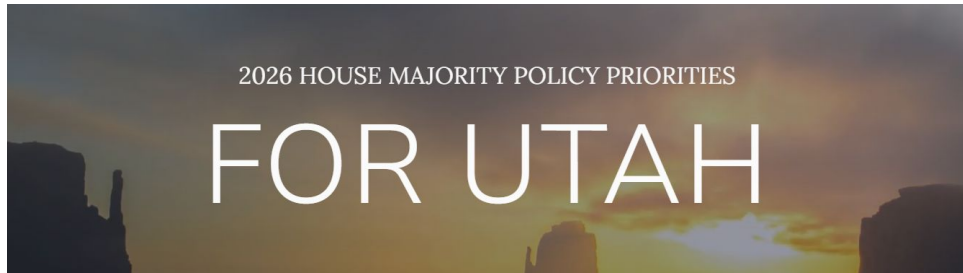


Budget Cuts
(5%)

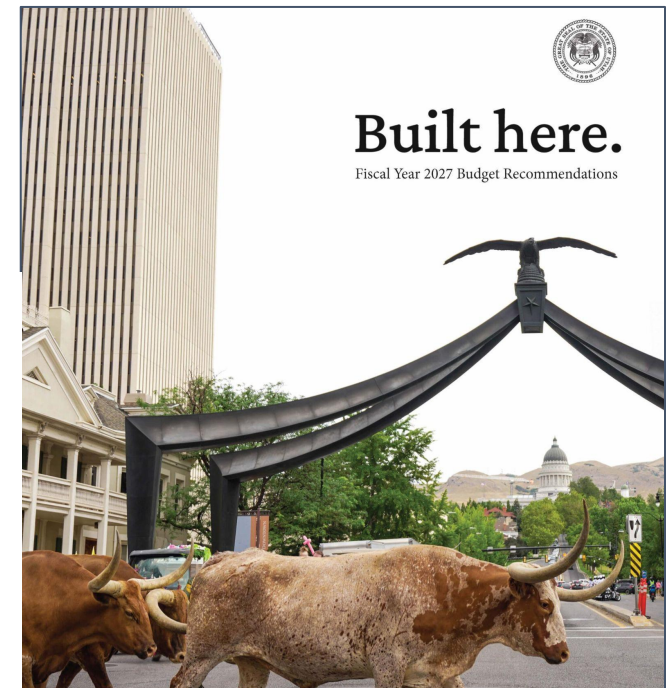


Cost of Living
+ Affordability

Legislative Priorities



UTAH SENATE
DEMOCRATS



Legislative Priorities - Transportation

- **Reducing Traffic:** Commitment to building roads, transit, and active transportation that keep Utahns moving forward (*House Majority*)
- **Infrastructure:** Collaborate with agencies and businesses to further develop transit options and tackle “last mile” challenges between transit riders and their destination. Public transit must be competitive with automobile travel, offering convenience and efficiency (*Senate Majority*)
- **Utah Trails:** With the goal of linking all parts of the state through active transportation, the Utah Trails Network aims to improve the walkability and recreation opportunities (*Governor Cox*)

What to expect (legislation + funding requests)

- **Housing programs reorganization (HB68)**
- **Regional infrastructure funding**
- **Transportation utility fee**
- **Gas tax reduction + subsidy elimination**
- **Local Administrative Advisor (LAA) funding restoration**

Don't miss a thing!



Bill Tracker

WFRC tracks bills that impact transportation and communities along the Wasatch Front during the legislative session.

[2026 Bill Tracker →](#)

[Previous Bill Trackers →](#)



Appropriations Tracker

WFRC tracks relevant funding item information as appropriations make their way through the legislative budgeting process.

[2026 Appropriations Tracker →](#)

[Previous Appropriations Trackers →](#)




Legislative Session Wrap-Up

Our comprehensive wrap-ups provide detailed information on the key budget and policy items tracked during the session.

[2025 Legislative Wrap Up →](#)

[Previous Legislative Wrap-ups →](#)

GOVERNMENT AFFAIRS UPDATE

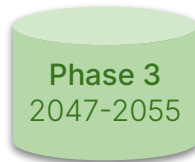
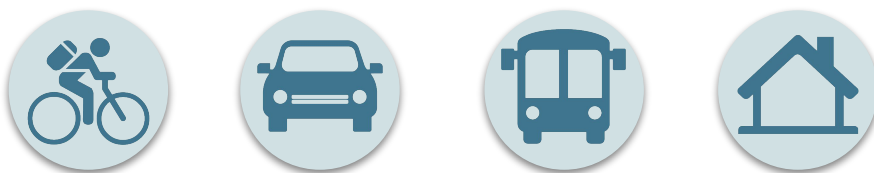
An aerial photograph of a city, likely Salt Lake City, showing a mix of urban development and greenery. In the background, large, rugged mountains are visible under a clear sky. The city features various buildings, including a prominent church with a tall steeple on the left, several multi-story commercial buildings in the center, and a large, modern building with a red and white facade in the foreground. The overall scene depicts a vibrant urban environment with a strong natural backdrop.

2027-2055 RTP Phasing Criteria

Regional Growth Committee // January 2026



Regional Transportation Plan Overview



[Livable & Healthy Communities](#)



[Access to Economic & Educational Opportunities](#)



[Manageable & Reliable Traffic Conditions](#)



[Quality Transportation Choices](#)



[Safe, User Friendly Streets](#)



[Clean Air](#)



[Housing Choices & Affordable Living Expenses](#)



[Fiscally-Responsible Communities & Infrastructure](#)



[Sustainable Environment](#)



[Ample Parks & Public Spaces](#)

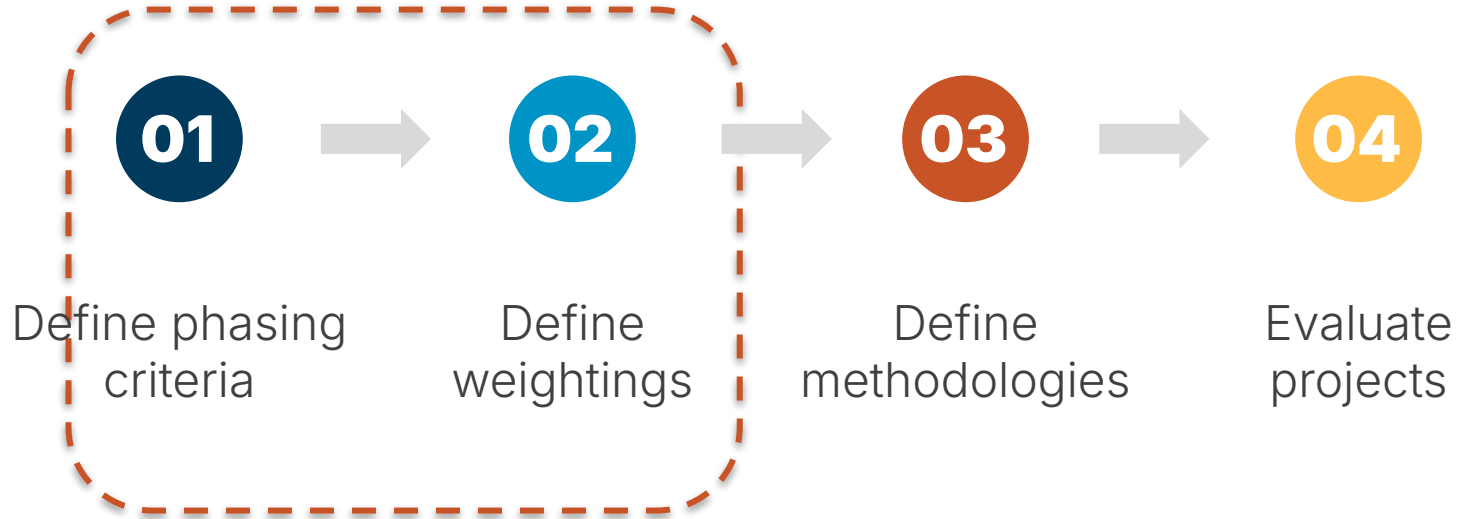
Where Are We?



Prioritize Projects

- A** **Needs-based phasing:** When a project is anticipated to be needed
- B** **Fiscally constrained phasing:** When a project is anticipated to be funded

Prioritize Projects



Phasing Criteria







Roadway Criteria

			PRIORITY
	Livable & Healthy Communities	Improves access to Wasatch Choice Vision centers	<div><div></div></div>
		Improves Access to Opportunities	<div><div></div></div>
	Access to Economic & Educational Opportunities	Improves Access to Opportunities in low-income areas	<div><div></div></div>
		Enhances freight mobility	<div><div></div></div>
	Manageable & Reliable Traffic Conditions	Improves travel time reliability	<div><div></div></div>
		Increases network connectivity	<div><div></div></div>
	Safe, User-Friendly Streets	Improves safety	<div><div></div></div>
	Fiscally Efficient Communities & Infrastructure	Improves state of good repair	<div><div></div></div>
		Advances previous investments	<div><div></div></div>
	Quality Transportation Choices	Supports transportation choices	<div><div></div></div>



Transit Criteria

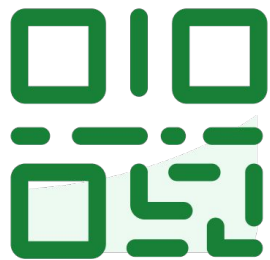
			PRIORITY
	Livable & Healthy Communities	Improves access to activity-intense station areas	<div><div></div></div>
		Improves access to existing amenities	<div><div></div></div>
	Access to Economic & Educational Opportunities	Improves Access to Opportunities	<div><div></div></div>
		Improves Access to Opportunities in low-income areas	<div><div></div></div>
	Addresses areas of traffic congestion	Provides service on or near a corridor with heavy traffic	<div><div></div></div>
	Quality Transportation Choices	Supports existing ridership	<div><div></div></div>
		Supports projected ridership	<div><div></div></div>
	Fiscally Efficient Communities & Infrastructure	Advances previous investments	<div><div></div></div>
	Safe, User-Friendly Streets	Improves access to transit	<div><div></div></div>

Active Transportation Criteria

			PRIORITY
	Livable & Healthy Communities	Improves access to Wasatch Choice Vision centers	<div><div></div></div>
		Provides opportunities for physical activity in areas in need of improved health outcomes	<div><div></div></div>
	Access to Economic & Educational Opportunities	Improves Access to Opportunities	<div><div></div></div>
		Improves Access to Opportunities in low-income areas	<div><div></div></div>
	Manageable & Reliable Traffic Conditions	Available roadway capacity to build AT project	<div><div></div></div>
	Quality Transportation Choices	Improves network connectivity	<div><div></div></div>
		Potential to replace vehicular trips	<div><div></div></div>
		Improves connections to transit	<div><div></div></div>
	Safe, User-Friendly Streets	Improves comfort and safety of user	<div><div></div></div>
	Fiscally Efficient Communities & Infrastructure	Advances previous investments	<div><div></div></div>

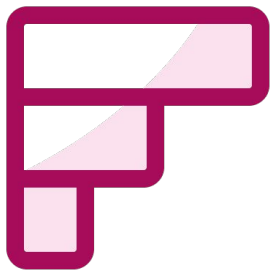
Your Feedback

-  **A What are your reactions?**
-  **B What criteria are important to you?**



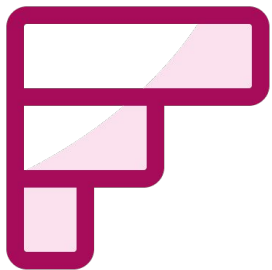
Join at slido.com
#3629431





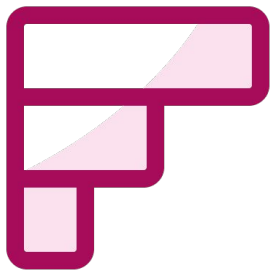
How would you rank these roadway criteria?





How would you rank these transit criteria?





How would you rank these active transportation criteria?





What additional questions or considerations do you have?



STATION AREA PLANNING

Bountiful - Woods Cross FrontRunner

Salt Lake City - Airport, River Trail, & 4 University TRAX Stations

Ogden - Ogden FrontRunner & 5 OGX Stations

South Salt Lake - Meadowbrook & Millcreek TRAX

Millcreek - Meadowbrook TRAX

Murray - Fashion Place West & Midvale Fort Union TRAX

Regional Growth Committee | January 15th, 2026

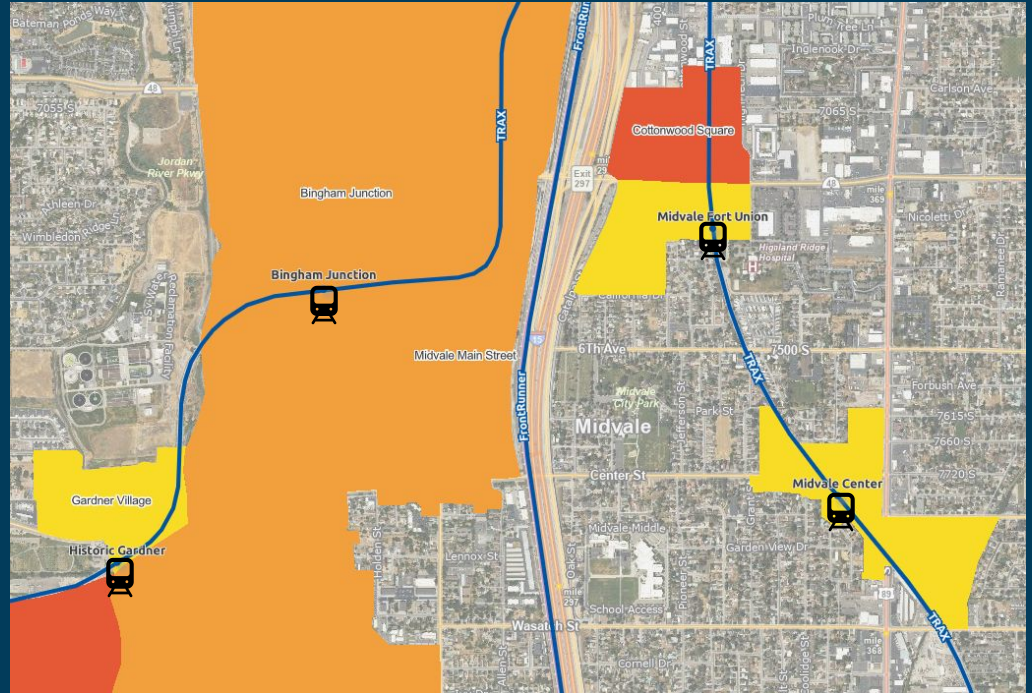
Byron Head, Community Planner



WASATCH FRONT REGIONAL COUNCIL

STATION AREAS ARE CENTERS!

- Most stations are in Wasatch Choice centers
- Strategically located
- The hearts of our communities



STATION AREA PLANNING, “SAP”



$\frac{1}{2}$ mile around
Rail stations



$\frac{1}{4}$ mile around
BRT stations



STATION AREA PLANNING, “SAP”

Objectives

- Increase the availability and affordability of housing
- Promote sustainable environmental conditions
- Enhance access to opportunities
- Increase transportation choices and connections

Required Components

- Vision, map, engagement, **implementation plan**

10-9a-403.1(2)(b)(ii) - Resolutions of Impracticability

For example:

- Existing developments or entitlements
- Environmental limitations
- Land ownership

10-9a-403.1(2)(b)(i) - Prior Actions

- HB462 allows for cities to adopt a resolution finding the objectives of station area planning have been substantially

pro

**STILL RELEVANT TO MAKING
MEANINGFUL PROGRESS**

- A
- Approved land use applications
- Approved agreements or financing
- Investments made

SAP PROGRESS TO DATE

Of the 127 station areas*

6

Stations where
station area planning
has not begun

8

Stations with
planning that
pre-dates HB462

16

SAPs being
prepared for
adoption

18

SAPs submitted for
certification

79

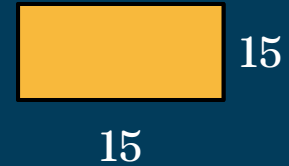
SAPs certified by
MPO

2025 Deadline

WFRC



MAG



- Those remaining?
 - Considering certification today
 - Bountiful (1), Millcreek (1), Murray (1), Ogden (4), & South Salt Lake (1)

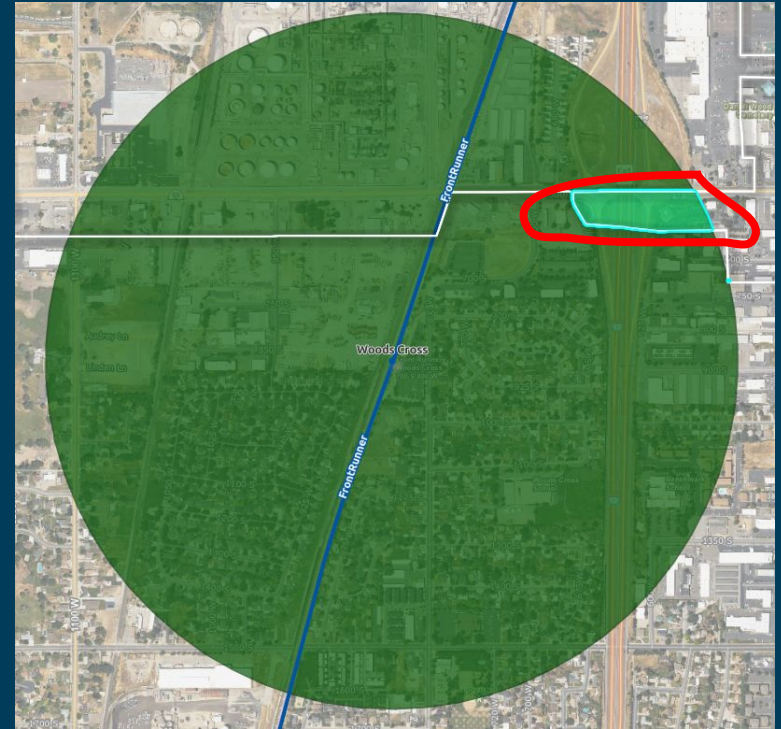
A modern multi-story apartment building with a mix of red brick and light-colored concrete panels. The building features large windows with black frames. In the foreground, there are balconies with black metal railings and small trees planted in concrete planters. The sky is clear blue.

Adopted plans would now support
>101,600 new homes
across the Wasatch Front

Resolutions of Impracticability

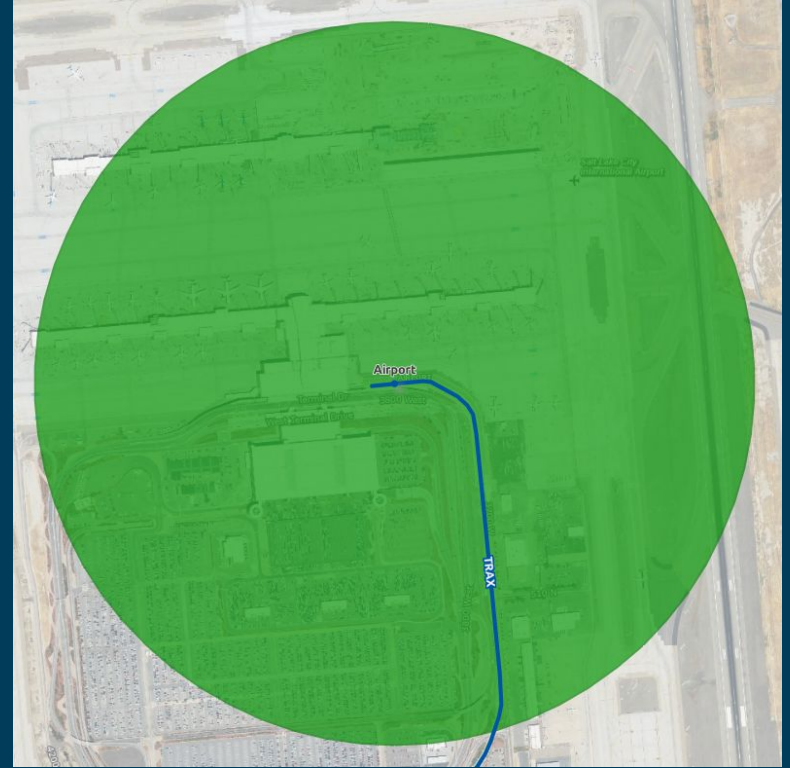
Bountiful - Woods Cross FrontRunner

- Mostly I-15 ROW
- Two commercial parcels on far side of I-15, no redevelopment anticipated



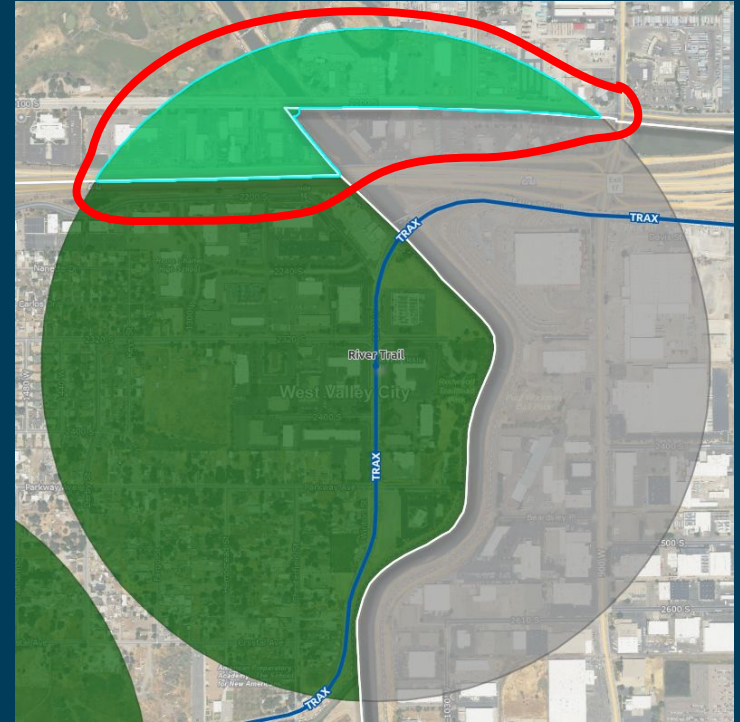
Salt Lake City - Airport

- Completely within SLC airport property



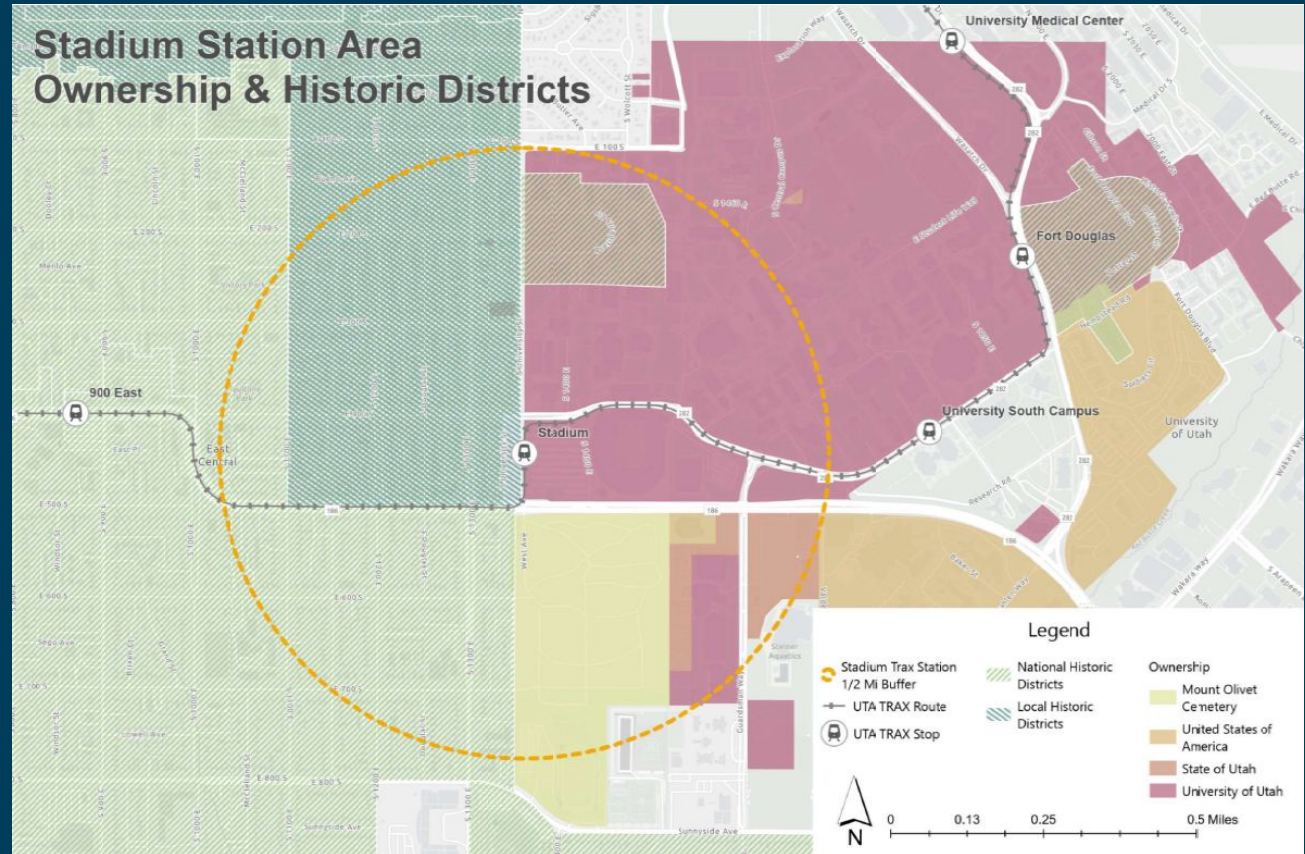
Salt Lake City - River Trail

- Cut off from TRAX station by Jordan River, UT 201
- Existing industrial/manufacturing



Salt Lake City - Stadium

- University property
- Historic districts
- Cemetery



Salt Lake City - University South Campus, Fort Douglas, & University Medical Center

- University property - not subject to city zoning regulations
- Stable single-family residential neighborhood



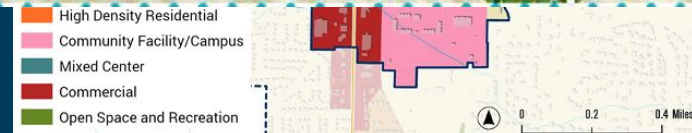
New Station Area Plans

- Seeking Prior Actions certification
 - Completed 3 plans prior to June 1, 2022
 - Have continued to plan and update zoning since
 - Working with development partners on Union Station area



Ogden - OGX Stations

- 5 stations in corridor (3 on WSU campus)
- 727 new homes
- Underpass at 3950 S
- Mixed-use redevelopment of targeted commercial lots





MILLCREEK STATION

WEST TEMPLE

TRAX

3300 S

300 W





FRONT RUNNER

TRAX

MEADOWBROOK STATION

3900 S

WEST TEMPLE



Item 5: ACTION - Station Area Planning

Suggested Motion

“I move to recommend certification of the Resolutions of Impracticability, Resolutions of Prior Actions, and Station Area Plans presented today for the cities of Bountiful, Salt Lake City, Ogden, South Salt Lake, Millcreek, and Murray to the Wasatch Front Regional Council.”

STATION AREA PLANNING, “SAP”

Required Components

- Vision
- Map (rail: $\frac{1}{2}$ mile radius, or BRT: $\frac{1}{4}$ mile radius)
- 5-Year Implementation Plan
- Statement describing how 4 objectives are met
- Public / Stakeholder Engagement

10-9a-403.1(2)(b)(ii) - Resolutions of Impracticability

- HB462 allows for cities to adopt a resolution stating the conditions that exist to make fulfilling the requirements of station area planning “impracticable”
 - Existing developments or entitlements
 - Environmental limitations
 - Land ownership
 - Other similar conditions