



3200 West 300 North
West Point, UT 84015
PH: 801.776.0970
www.westpointutah.gov

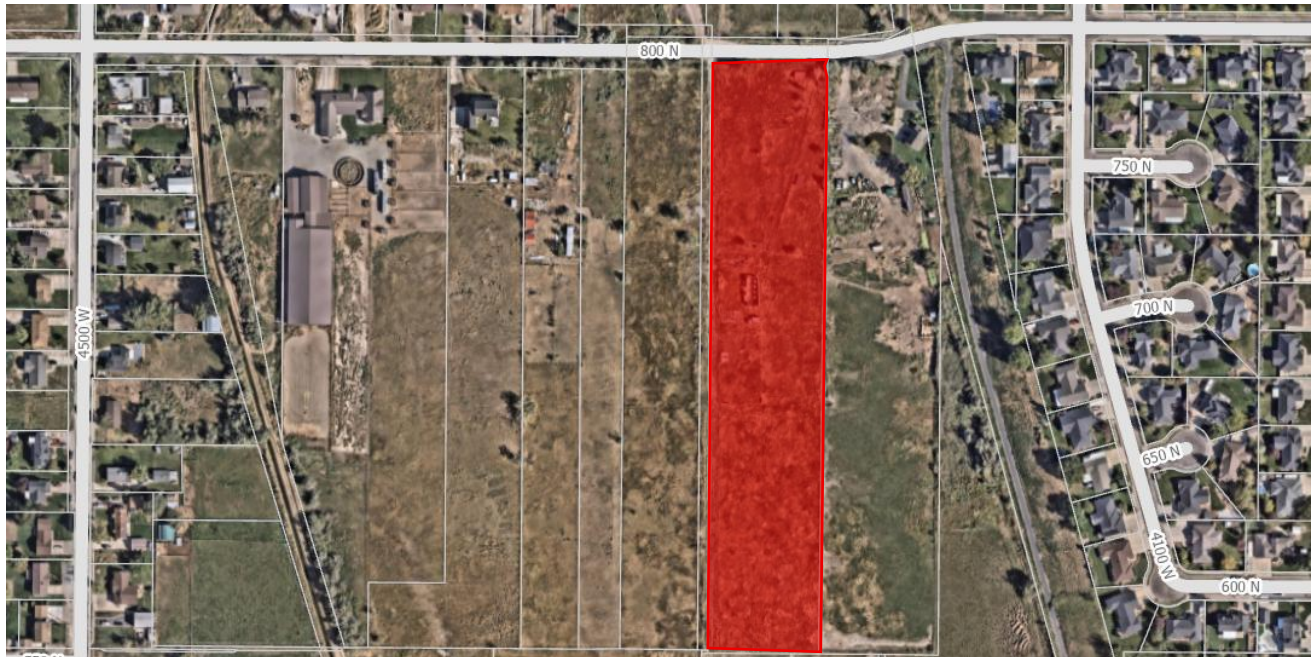
WEST POINT CITY NOTICE OF PUBLIC HEARING

Notice is hereby given that on Thursday, January 22, 2026, the West Point City Planning Commission will hold a public hearing at 3200 West 300 North, West Point City, UT, beginning at 7:00 PM.

The public hearing will be for a proposed rezone regarding property located at approximately 4200 West 800 North. The request made is to change the zoning on 7.04 acres of land from R-1 (Residential/maximum of 2.2 units per acres) to R-2 (Residential/maximum of 2.7 units per acre).

All interested parties are encouraged to attend and express their opinion on the matter. To review documentation related to the above hearing, contact West Point City Hall at 801-776-0970. If you need special accommodations to participate in the meeting, please call West Point City at least twenty-four (24) hours prior to the meeting at 801-776-0970.

Rezone *Approximately 4200 West 800 North*



Katie Hansen

Katie Hansen, West Point City Deputy Recorder
Posted this 12th day of January, 2026

Certificate of Posting

The undersigned, duly appointed Deputy City Recorder, does hereby certify that the above notice was posted on the date indicated in the following locations: 1) West Point City Hall Noticing Board 2) the City website at <http://www.westpointutah.gov/>
3) the Public Notice Website: <http://www.utah.gov/pmn/index.html>

Vicinity Map

Not to Scale



FAWKES
CONSULTANTS INC.

1404440084 WEST POINT, UTAH

PROJECT
Crystal Court

PARCEL 1404440084 -
WEST POINT,
DAVIS COUNTY,
UTAH

DATE: 11/18/2023

PROJECT NO: 23-003

REVISION: 001

1

2

3

4

5

6

7

8

9

10

11

12

13

14

15

16

17

18

19

20

21

22

23

24

25

26

27

28

29

30

31

32

33

34

35

36

37

38

39

40

41

42

43

44

45

46

47

48

49

50

51

52

53

54

55

56

57

58

59

60

61

62

63

64

65

66

67

68

69

70

71

72

73

74

75

76

77

78

79

80

81

82

83

84

85

86

87

88

89

90

91

92

93

94

95

96

97

98

99

100

101

102

103

104

105

106

107

108

109

110

111

112

113

114

115

116

117

118

119

120

121

122

123

124

125

126

127

128

129

130

131

132

133

134

135

136

137

138

139

140

141

142

143

144

145

146

147

148

149

150

151

152

153

154

155

156

157

158

159

160

161

162

163

164

165

166

167

168

169

170

171

172

173

174

175

176

177

178

179

180

181

182

183

184

185

186

187

188

189

190

191

192

193

194

195

196

197

198

199

200

201

202

203

204

205

206

207

208

209

210

211

212

213

214

215

216

217

218

219

220

221

222

223

224

225

226

227

228

229

230

231

232

233

234

235

236

237

238

239

240

241

242

243

244

245

246

247

248

249

250

251

252

253

254

255

256

257

258

259

260

261

262

263

264

265

266

267

268

269

270

271

272

273

274

275

276

277

278

279

280

281

282

283

284

285