

COUNCIL MEMBERS

Loren Steck
Jack Dalene
Dennis Nordfelt
Troy Birch
Anthony Beal

MANAGER

Katie Witt

COMMUNITY DEVELOPMENT

DIRECTOR/ENGINEER

Bryan Kimball

RECORDER

Candice Maudsley

EPHRAIM CITY CORPORATION

JOHN SCOTT, MAYOR

5 South Main, Ephraim, Utah 84627



CITY PLANNER

Megan Spurling

TREASURER

Aubrey Adams

FINANCE DIRECTOR

Jon Knudsen

PUBLIC SAFETY DIRECTOR

Colby Zeeman

POWER DIRECTOR

Cory Daniels

PUBLIC WORKS DIRECTOR

Jeff Jensen

COURTESY NOTICE OF PUBLIC HEARING

**SOUTH TOWNE HOMES SUBDIVISION
LOCATED AT APPROXIMATELY 687 S MAIN**

Public notice is hereby given that the Ephraim City Planning and Zoning Commission, in accordance with Sections 11.24.030 and 10.20.060 of the Ephraim City Municipal Code, will conduct a public hearing to discuss and possibly approve a request regarding a proposed Town Home subdivision located at approximately 687 S Main.

The applicants and current owners of the property, Matt and Molly Anderson are proposing to demolish the existing theater and are requesting the subdivision to construct 27 townhomes, on Assessor's Parcel S-831x. *See attached location and layout.*

The public meeting will be held:

Wednesday, January 14, 2026

beginning at 6:00 p.m.

Ephraim City Hall

5 South Main Street, Ephraim, Utah 84627

Interested parties may attend in person or electronically via zoom. Those wishing to attend electronically should notify Ephraim City Staff prior to 3:00 p.m. the day of the meeting. For further information, or to request a meeting link, please contact Megan Spurling, City Planner, 5 South Main Street, Ephraim, Utah 84624; call at (435) 283-4631; or email mspurling@ephraim.gov

Pursuant to the Americans with Disabilities Act, individuals needing special accommodations during this meeting should notify Ephraim City at (435) 283-4631 at least 24 hours prior to the meeting.



Posted: December 31, 2026

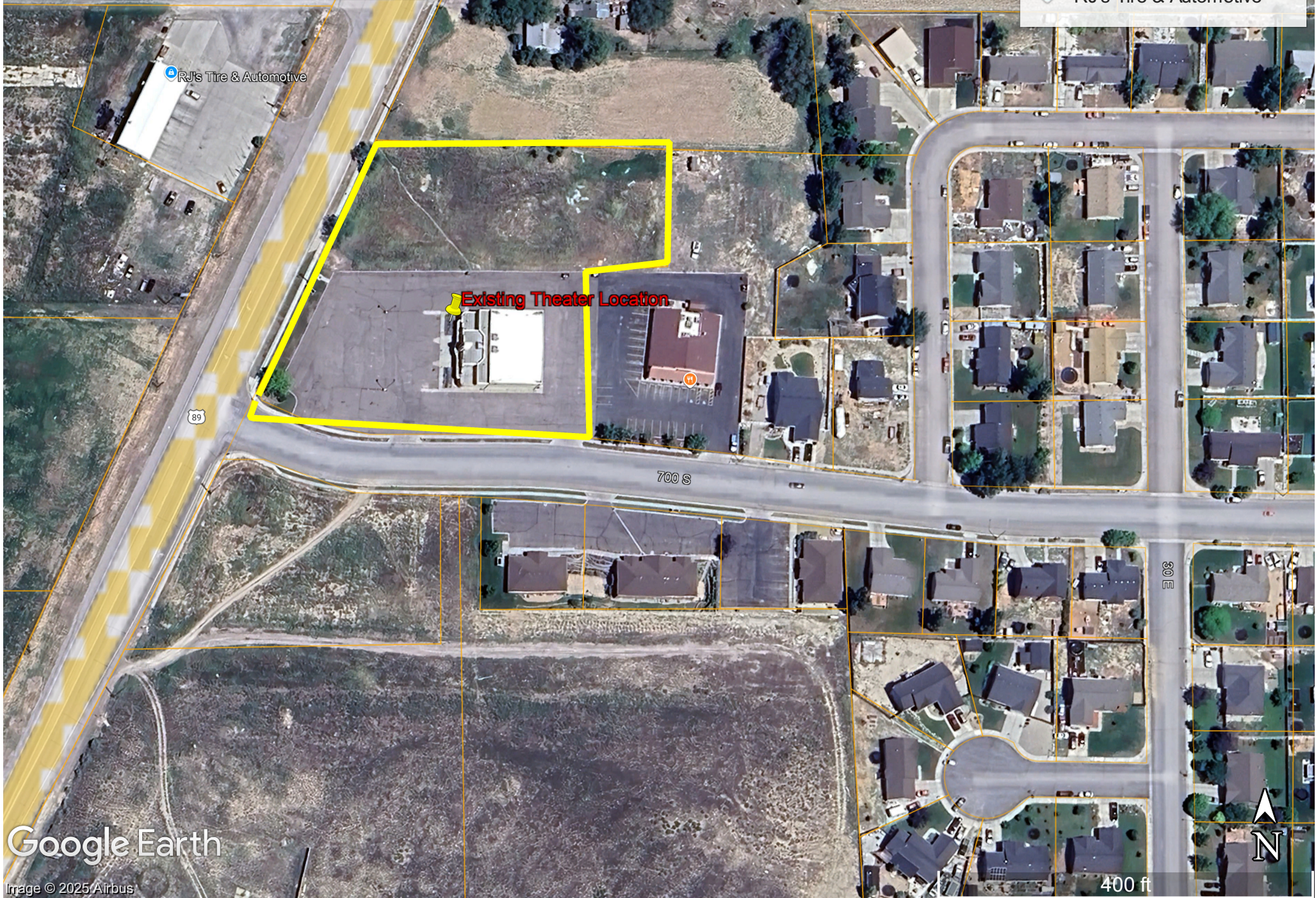
Published: December 31, 2026— *Ephraim.gov and Utah Public Notice Website*

Propose Townhome Location

Approximately 687 S Main

Legend

-  Existing Theater Location
-  RJ's Tire & Automotive



SOUTH TOWNE HOMES SUBDIVISION

PART OF THE SW QUARTERS OF SECTION 9
TOWNSHIP 17 SOUTH, RANGE 3 EAST, SALT LAKE BASE & MERIDIAN
EPHRAIM CITY, SANPETE COUNTY, UTAH

