

Jordan River Management





Rose Park Nature Area

**Cottonwood
Park**

Fairpark Urban Core

Modesto Park

Glendale Oxbow

Jordan River

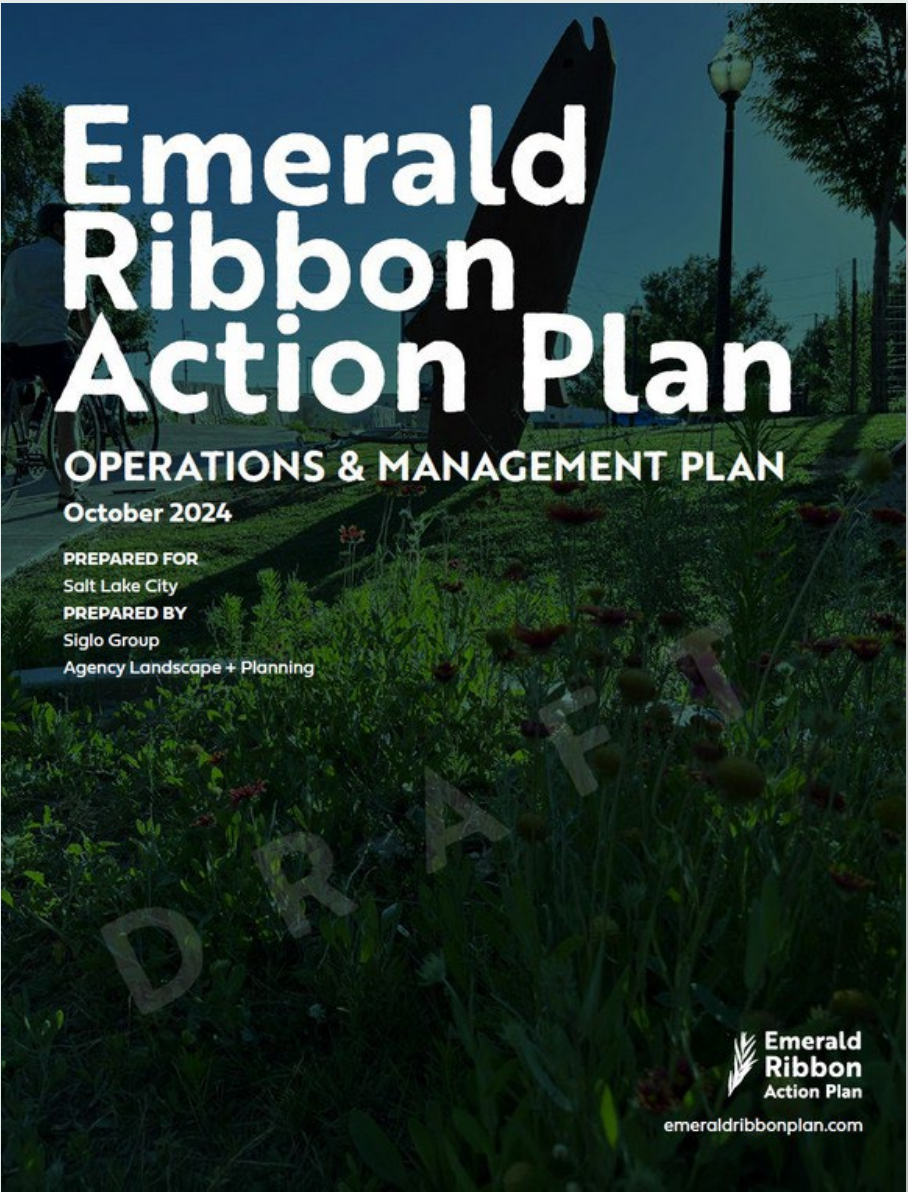
772
Acres Publicly
Owned Land

10 miles
river corridor

Five
focus sites for
Phase One

Two Plans to Bring the Vision to Life

EMERALD
RIBBON
ACTION PLAN



OPERATIONS AND
MANAGEMENT
PLAN

Guiding Principles

1

Celebrate the rich ecological and cultural diversity of the corridor.



2

Connect the corridor into surrounding streets, trails, and waterways.



4

Restore and enhance the river ecosystem as a peaceful refuge.



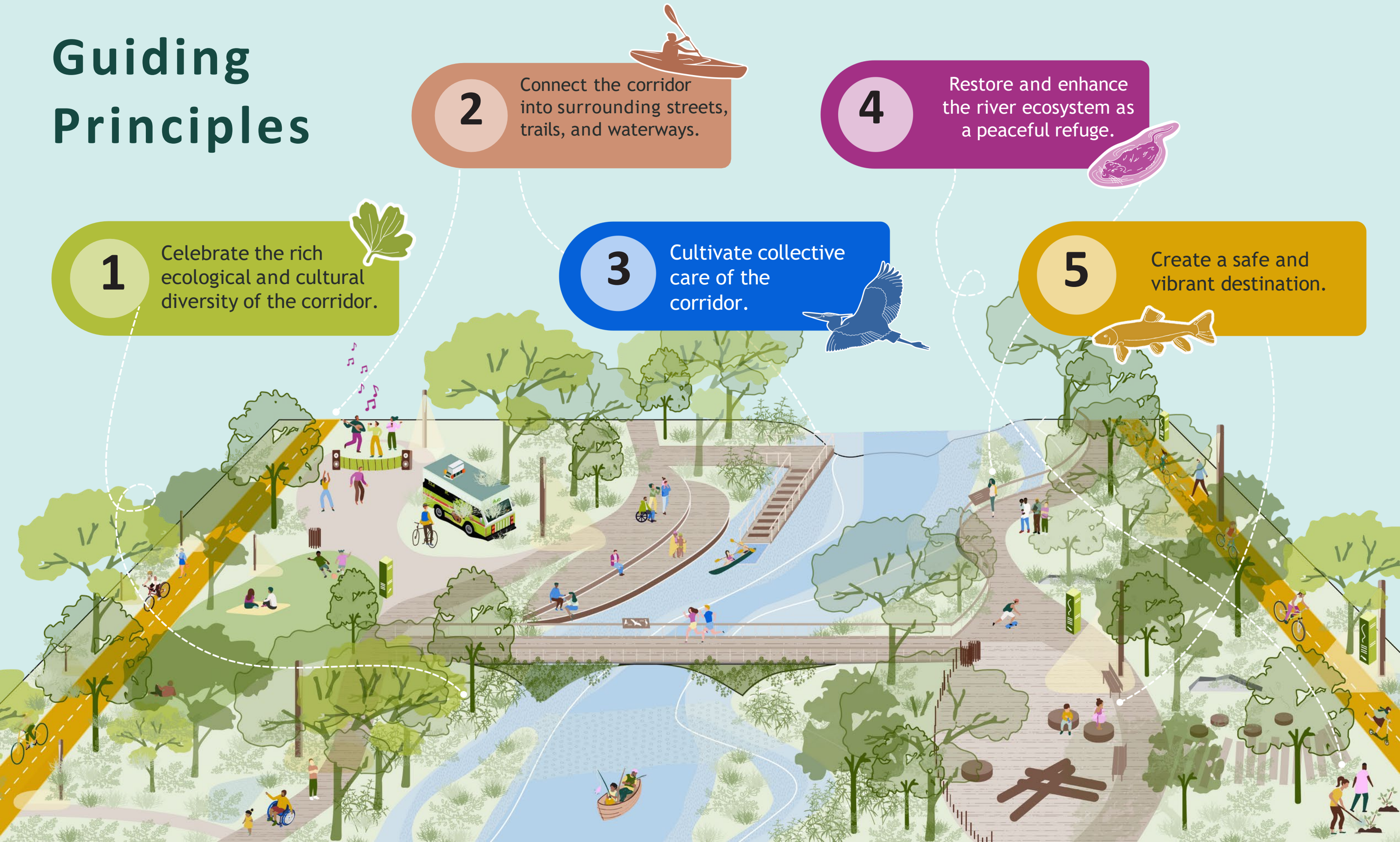
3

Cultivate collective care of the corridor.



5

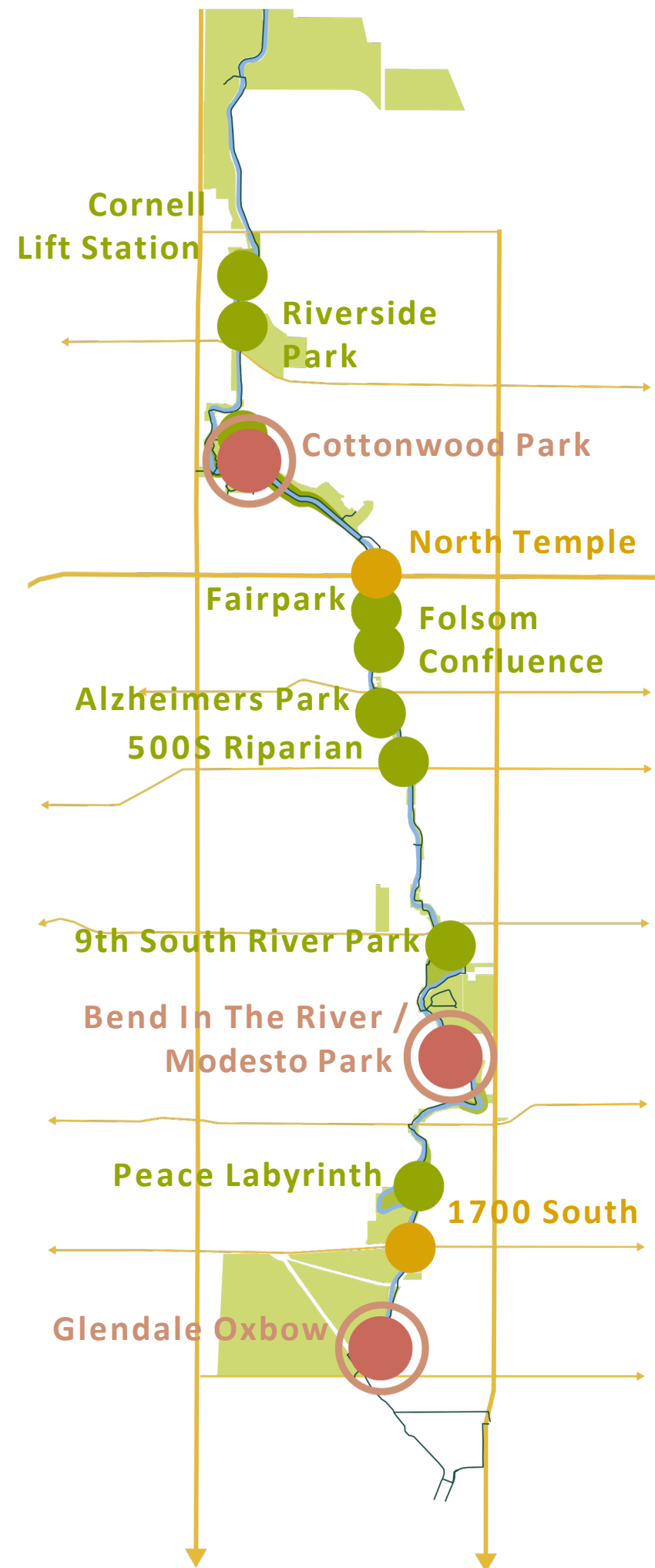
Create a safe and vibrant destination.



CAPITAL INVESTMENTS

9 Line Trail & Green Loop

Glendale Regional Park



The next 3 years

Phase One Priorities

**Includes Glendale Park*

\$51.5 M

Total Cost

\$36M

Dedicated GO Bond

Funding

\$8.5M

Additional CIP
Funding

NOTE: Estimates include soft costs such as design fees, permitting costs, contingencies, and escalation.

Glendale Park

\$14.5M Phase One





PUBLIC
LANDS

Backman Nature Playground

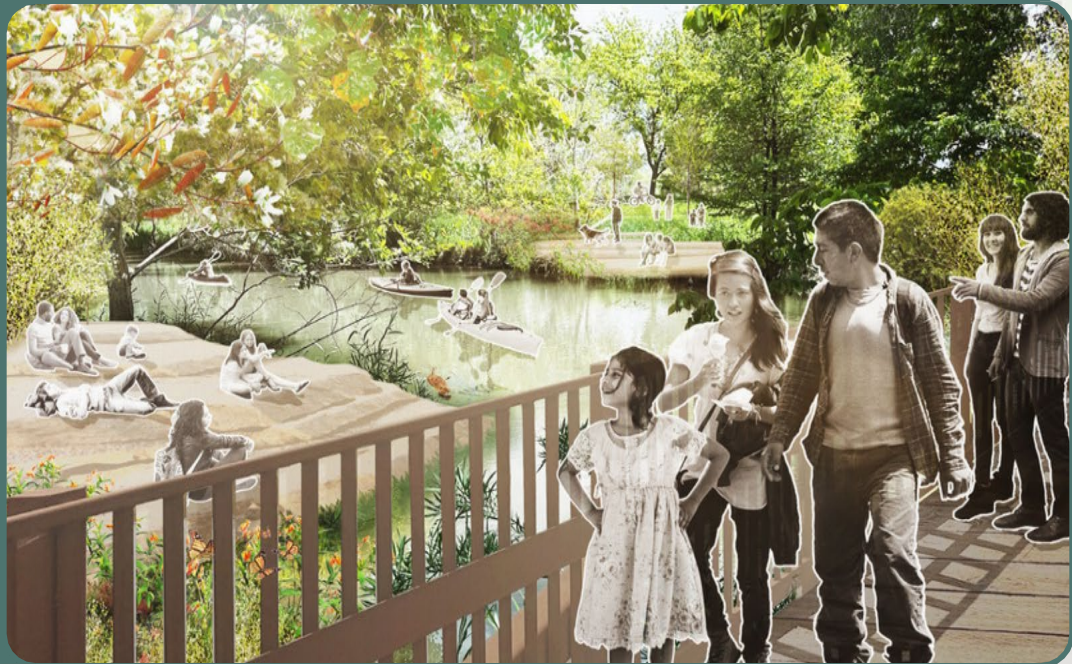
“Enhanced connections
between the community,
park and the river”

\$1M

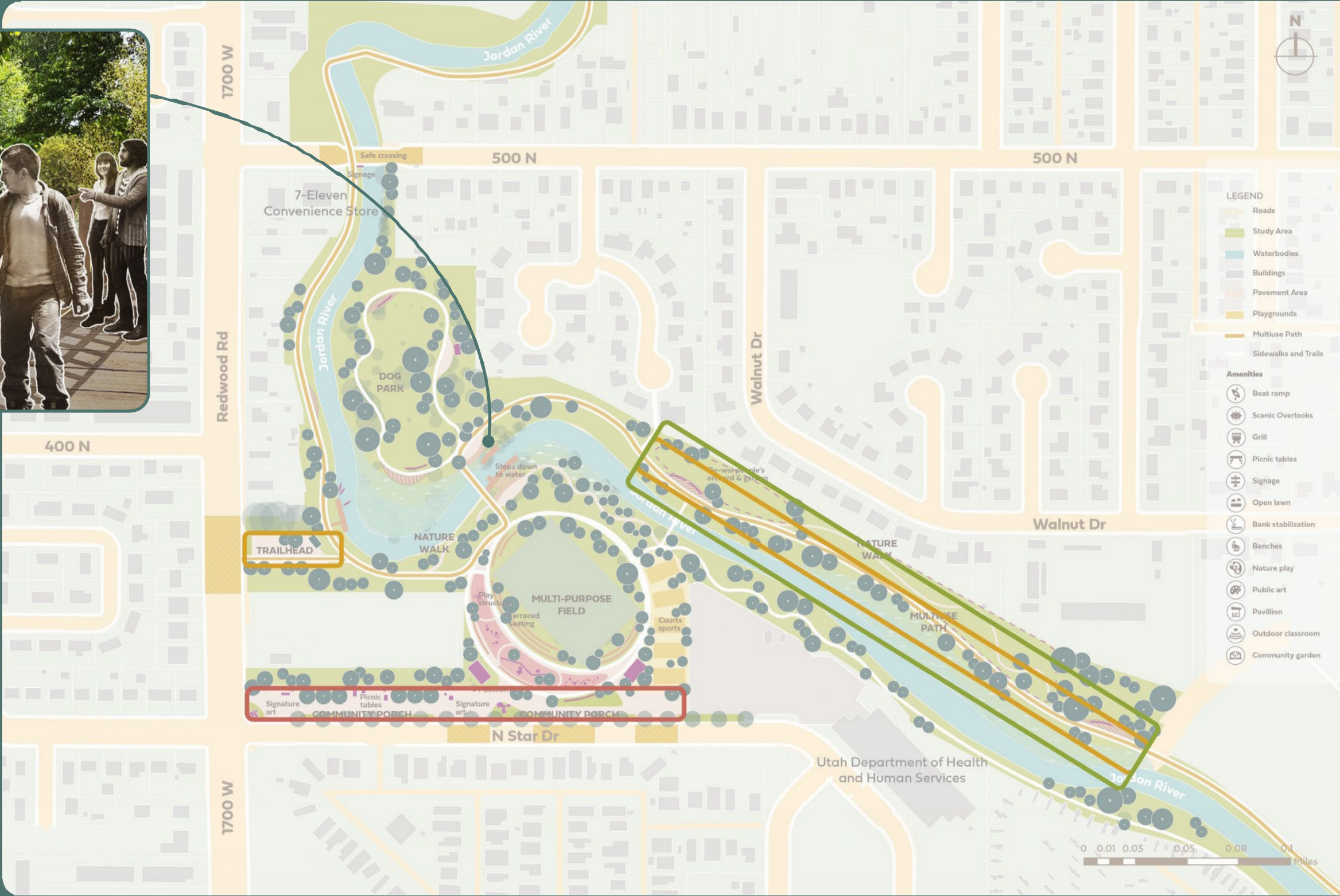


Cottonwood Park

“Enhanced connections
between the community,
park and the river”



\$4.5M
for Phase
One



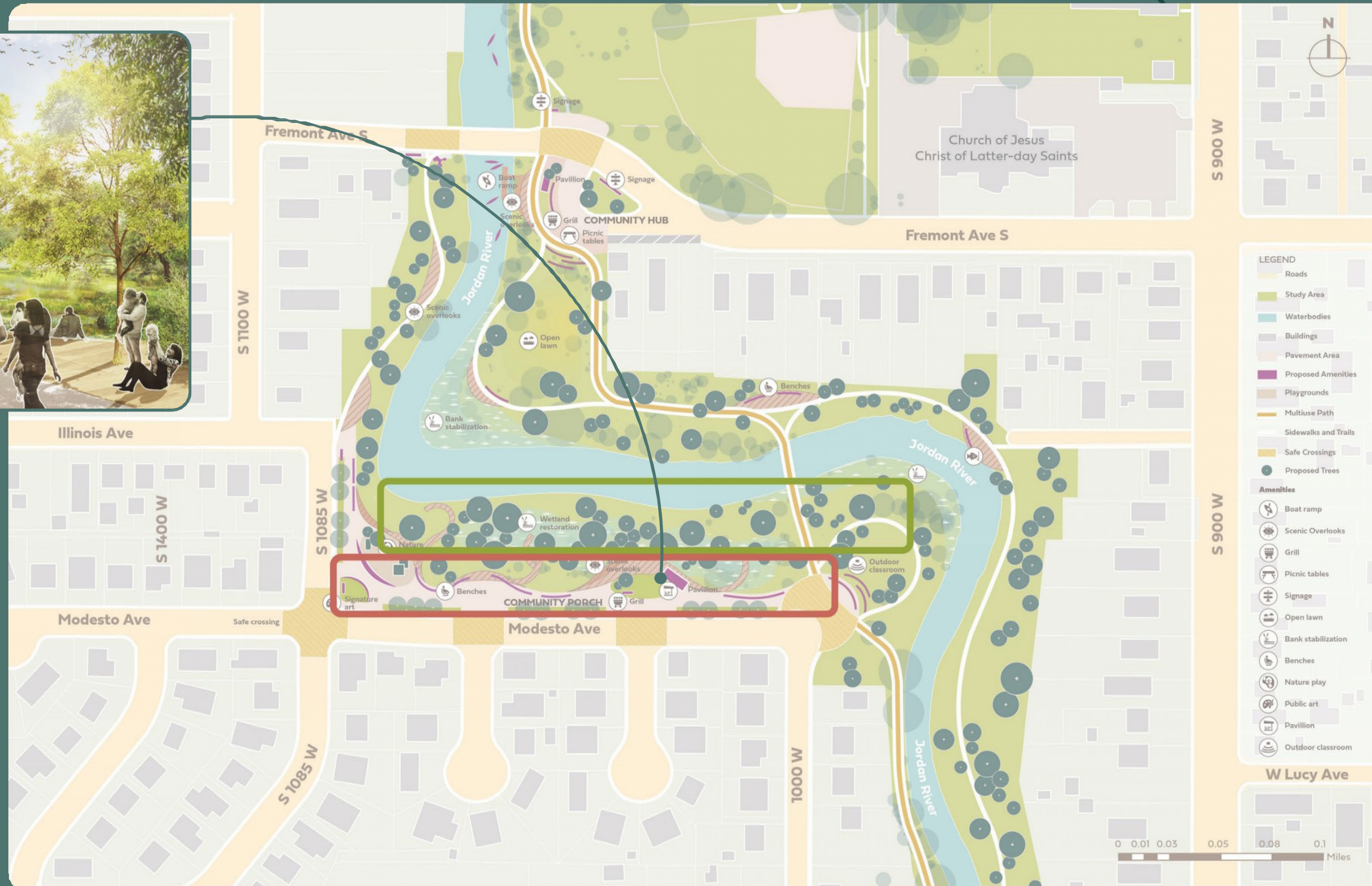
Bend in the River & Modesto Park

“A community porch overlooking restored nature”



\$4M

For
Phase
One



Glendale Oxbow and Phase II

“A great place to give space back to nature along the river”



\$30M
For Phase II



Glendale Oxbow and Phase II

“A great place to give
space back to nature
along the river”

\$30M
For Phase II

Glendale Regional Park Master Plan



Park Features

- 1 Trail Connection
 - 2 Picnic Lawn
 - 3 All Ages & Abilities Playground
 - 4 Pavilion/Shade Structure
 - 5 Full-Court Basketball
 - 6 Ice & Roller Skating Ribbon
 - 7 Kid's Climbing Feature
 - 8 All Ages Climbing Feature
 - 9 Pavilion
 - 10 Community Plaza / Promenade
 - 11 Parking Lot
 - 12 Hiking & Stedding Hill
 - 13 ADA Accessible, Multi-Use Trail
 - 14 Hilltop Overlook
 - 15 Skateboarding Area
 - 16 Water Feature/Plaza
 - 17 Outdoor Pool
 - 18 Flex Lawn & Performance Space
 - 19 Flex Stage/Plaza
 - 20 Bridge Connection to Jordan River Parkway
 - 21 Dog Park
 - 22 Picnic Areas
 - 23 Riparian Restoration
 - 24 Riverside Boardwalk
 - 25 Riverside Beach & Sand Volleyball
 - 26 Kayak Rental Station
 - 27 Boat Dock
 - 28 Boat Ramp
 - 29 Boat Drop-off
- * Pickleball Courts

Maintenance & Stewardship



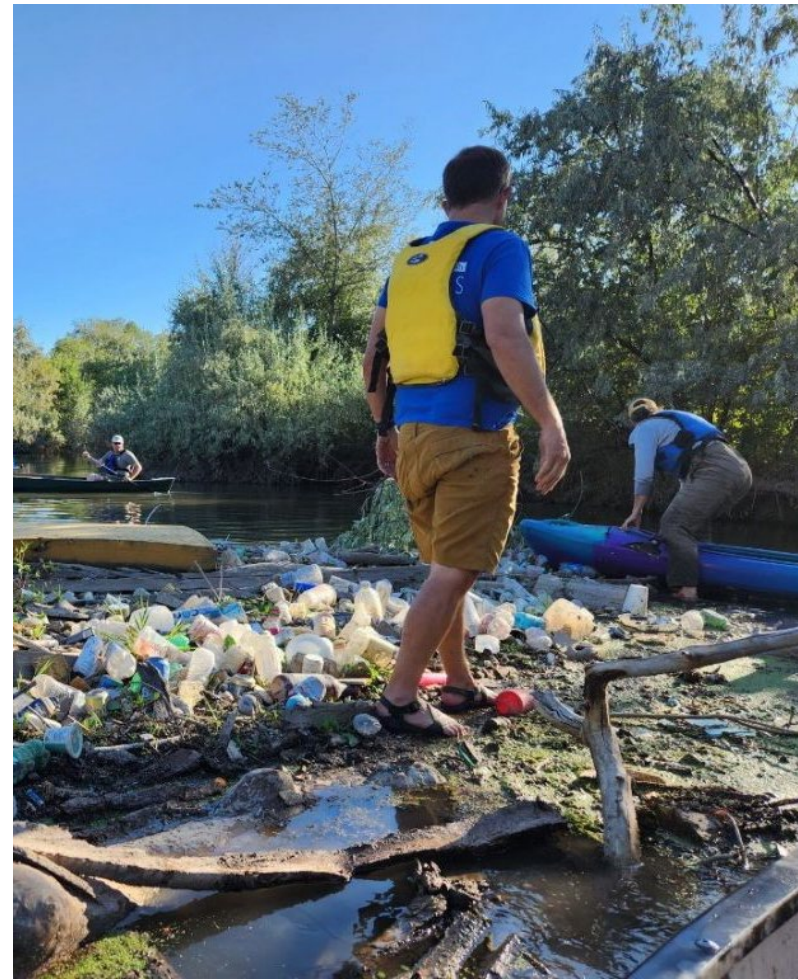
Cornell Wetlands

“A great place to give
space back to nature
along the river”



- Partnerships: Utah Department of Corrections
- Jordan River CWMA Grant
- University of Utah: Green House Partnership/Volunteers
- SLC Public Utilities: Stormwater Fees
- Stewardship: Utah Conservation Corps
- Volunteer Stewardship Series led by SLC

Jordan River Debris Vegetation Clearing (2022-2026)



Phase 1: \$675k

- Grant Funding
- Deferred Maintenance SLC

Phase 2:

Grant Funding: \$666k,

- Outdoor Recreation
- State FFSL
- Utah Conservation Corp

Jordan River Trash



Jordan River Stewardship

2025 Numbers

- 32 Individual sessions along Jordan River
- 2000 Volunteer Hours
- +5000 of Trash
- +40,000 Native Plants

Wasatch Mountain Institute Partnership
with SLC School District

- 3 Dedicated Locations for Educational Programming.



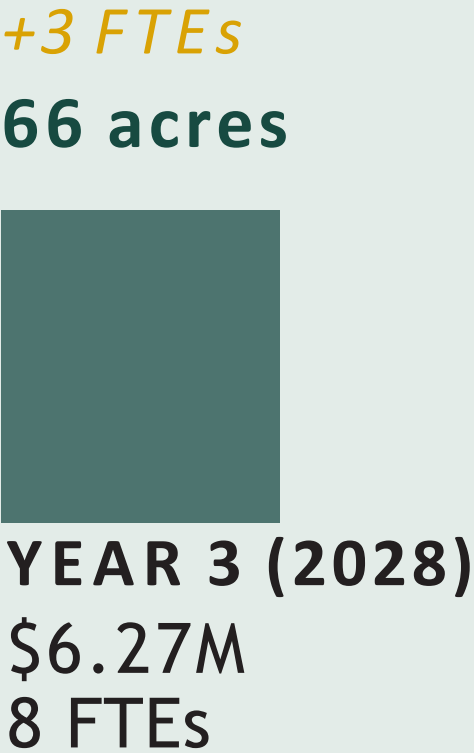
Big Idea

Transition to Natural Lands

Target area managed
as natural lands



Staff manage 74.5
acres per FTE
today, 55 acres
more than the 20
acre / FTE
recommendation





Thank you!

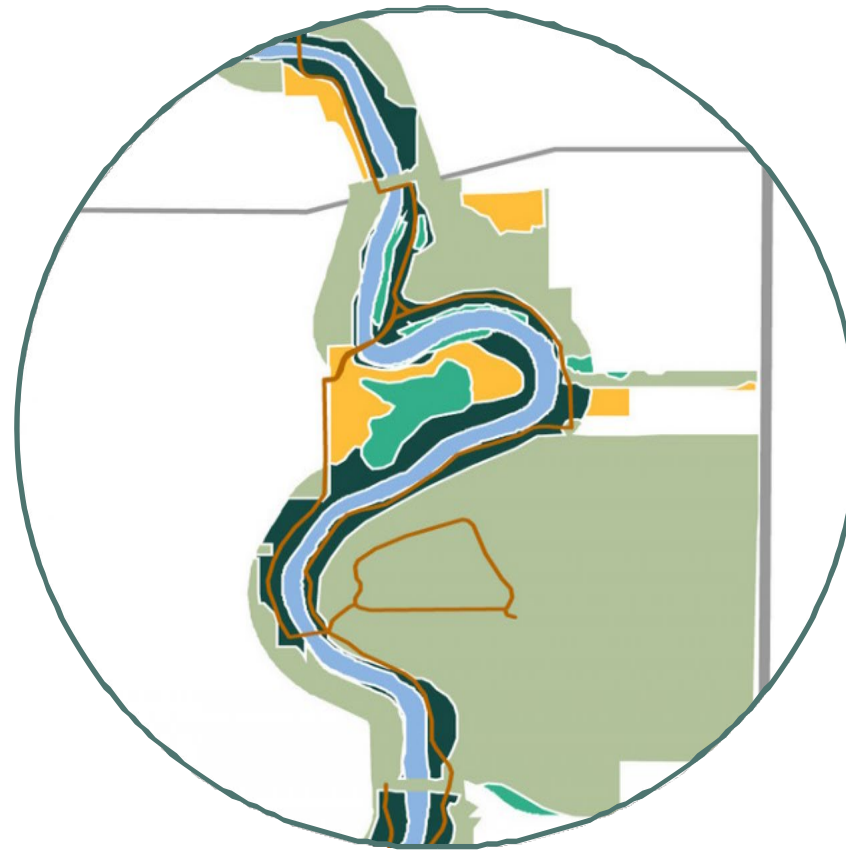
emeraldribbonactionplan.com



A Closer Look

Transitioning to Natural Lands

Increases in wetland and riparian area near 900 S River Park



Regional Athletic Complex

Rose Park Golf Course

Riverside Park

Northwest Recreation Center

N Temple

City Creek

200 South

Poplar Grove Blvd

Indiana Ave

Jordan Park

California Ave

1700 South

Glendale Golf Course

132 total acres

50 total acres

52 total acres

36 total acres

15 total acres

15 total acres

2 acres

3 acres

3 acres

Wetland

Upland

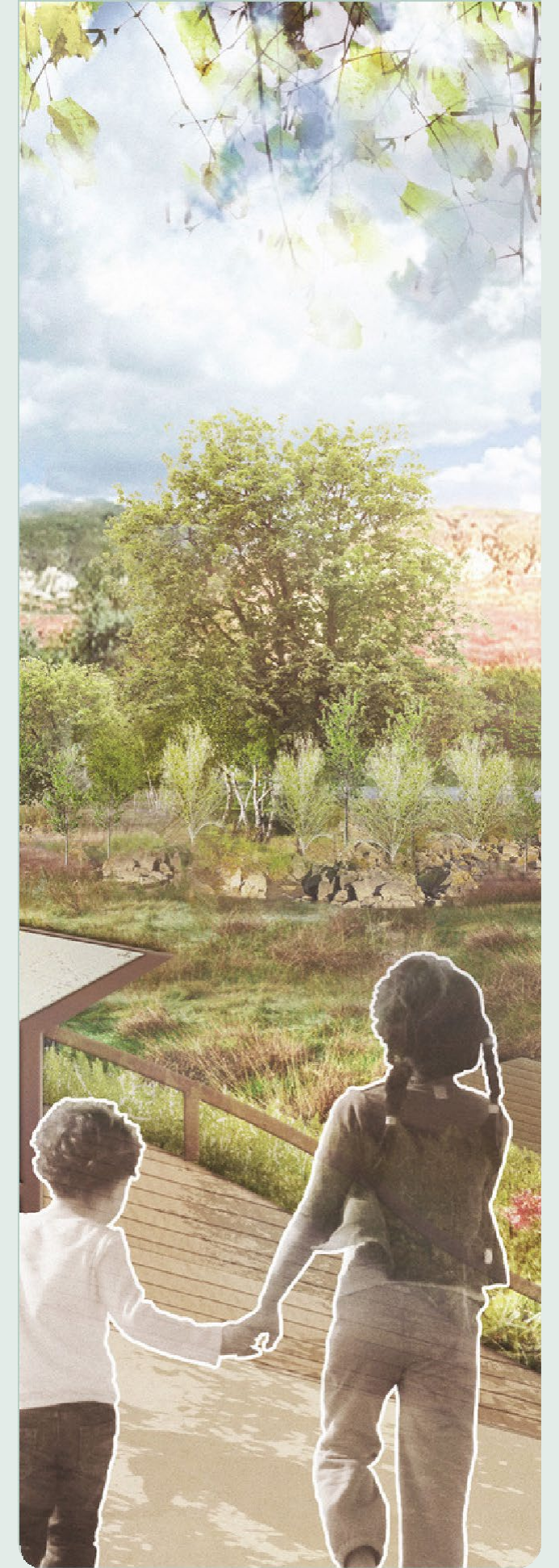
Riparian

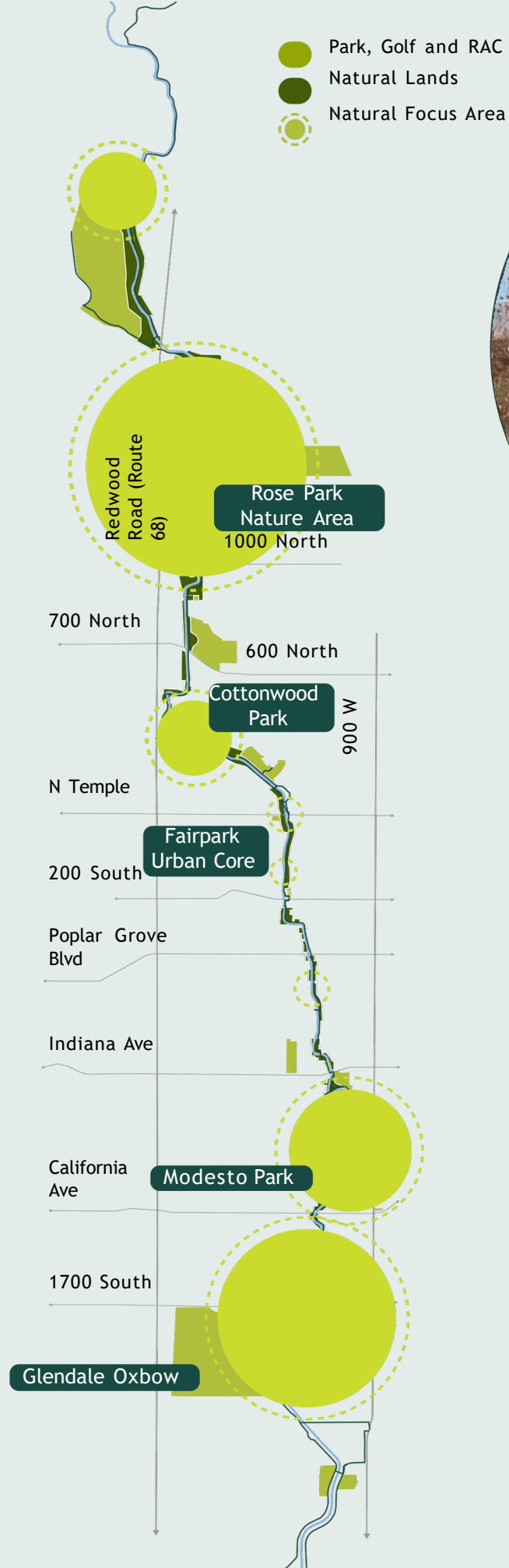
YEAR 1

YEAR 3

YEAR 10

Appendix





Nature

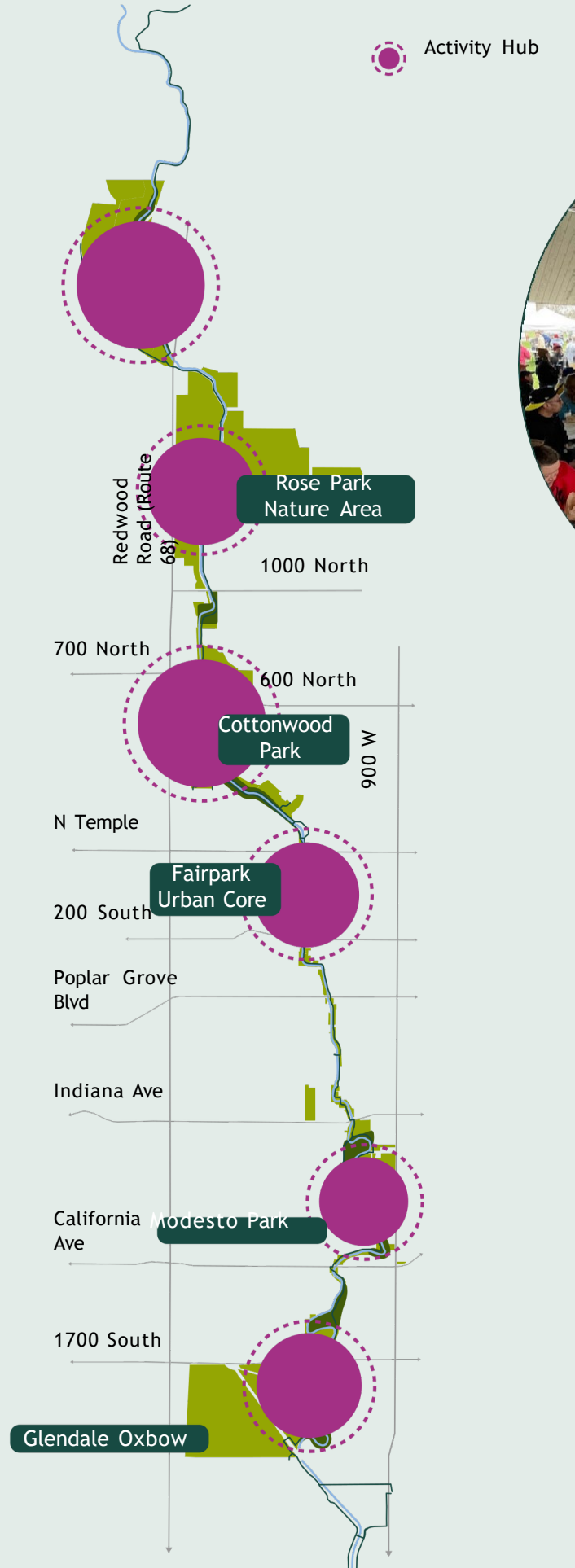
Focus on the restoration of native species, creation of new wetlands and natural habitats, and the design of nature experiences for people.

Key Metric



Sample Nature Goals:

- Enhancing Nature Experiences (1.1)
- Creating Biodiverse Habitat (1.2)
- Making Room for the River (4.1)
- Improving Water Quality (4.2)
- Expanding Natural Lands (4.3)



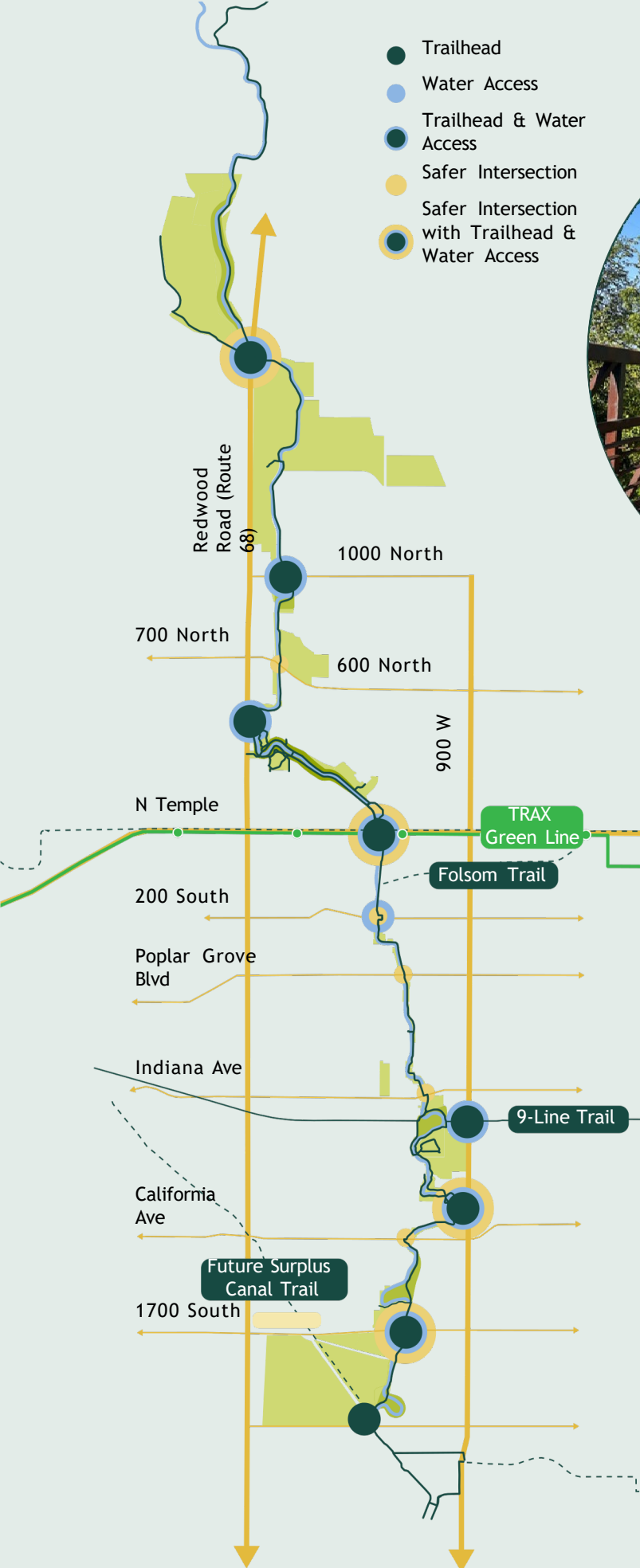
Culture

Increase investment in community resources and invest in new public amenities throughout the corridor.

Sample Culture Goals:

- Expand Public Art Programs (1.3)
- Celebrate & Support the Culture of the West Side (1.4)
- Bring Programming to the River and River's Edge (5.1)
- Support Small Businesses and Commercial Activation (5.2)
- Create Flexible Event and Gathering Spaces (5.5)





Connectivity

Improve the trail network on the corridor, optimizing for all user types and better connecting into both neighborhoods and other trails.

Sample Connectivity Goals:

- Create Safer and More Visible Intersections (2.1)
- Improve Neighborhood Connections (2.2)
- Expand Trail Widths and Separate Paths Where Possible (2.3)
- Improve Wayfinding and Signage (2.4)
- Bring Programming to the Water and Waters Edge (5.1)
- Improve Trail-Side Amenities (5.4)

