

Other Business Arrangement (ML 54666-OBA)

Exploration Agreement with Option to Lease

Lucin Mining District, Box Elder County, Utah

Lost Creek Utah Corp (aka Visionary Metals Corp)

Tyler Wiseman, PG – Lease Manager / Geoscientist

November 20, 2025



Lucin Mining District Project

Geologic Overview

- ☐ Basin and Range Province
- ☐ Northern Pilot Range
- ☐ Historic Lucin Mining District
 - Polymetallic vein and replacement deposits (Copper Mountain and East Canyon)
 - Past production of Cu, Pb, Ag, and Fe

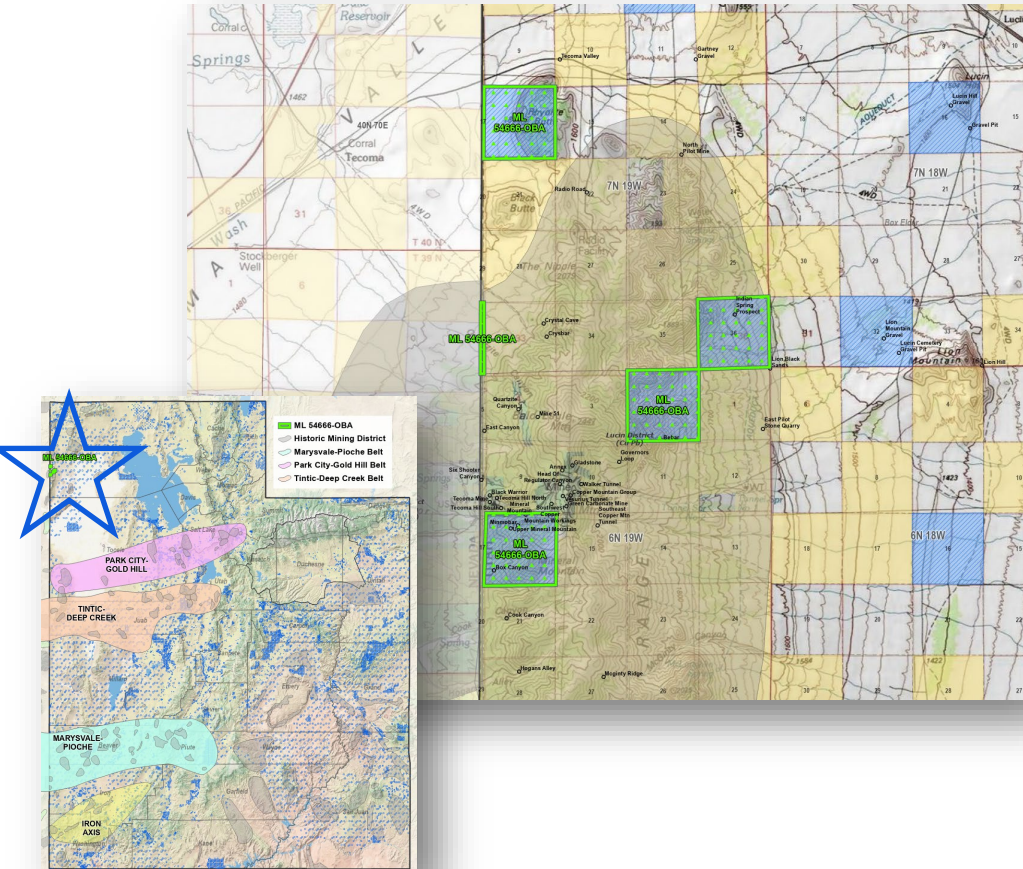
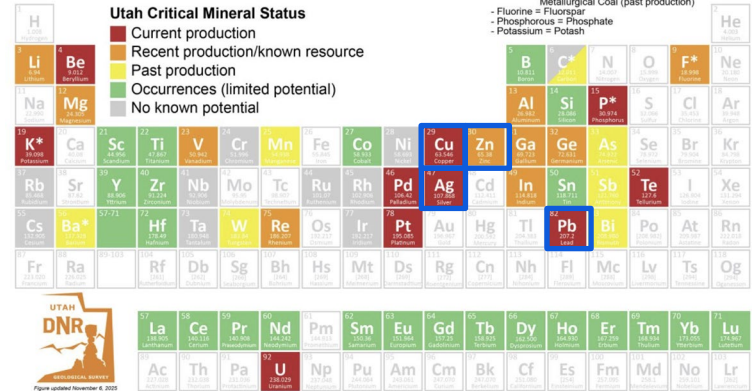
Utah Critical Mineral Summary

Final DOI List, November 2025

- Barium = Barite
- Carbon = Graphite (no known potential) and Metallurgical Coal (past production)
- Fluorine = Fluorspar
- Phosphorous = Phosphate
- Potassium = Potash

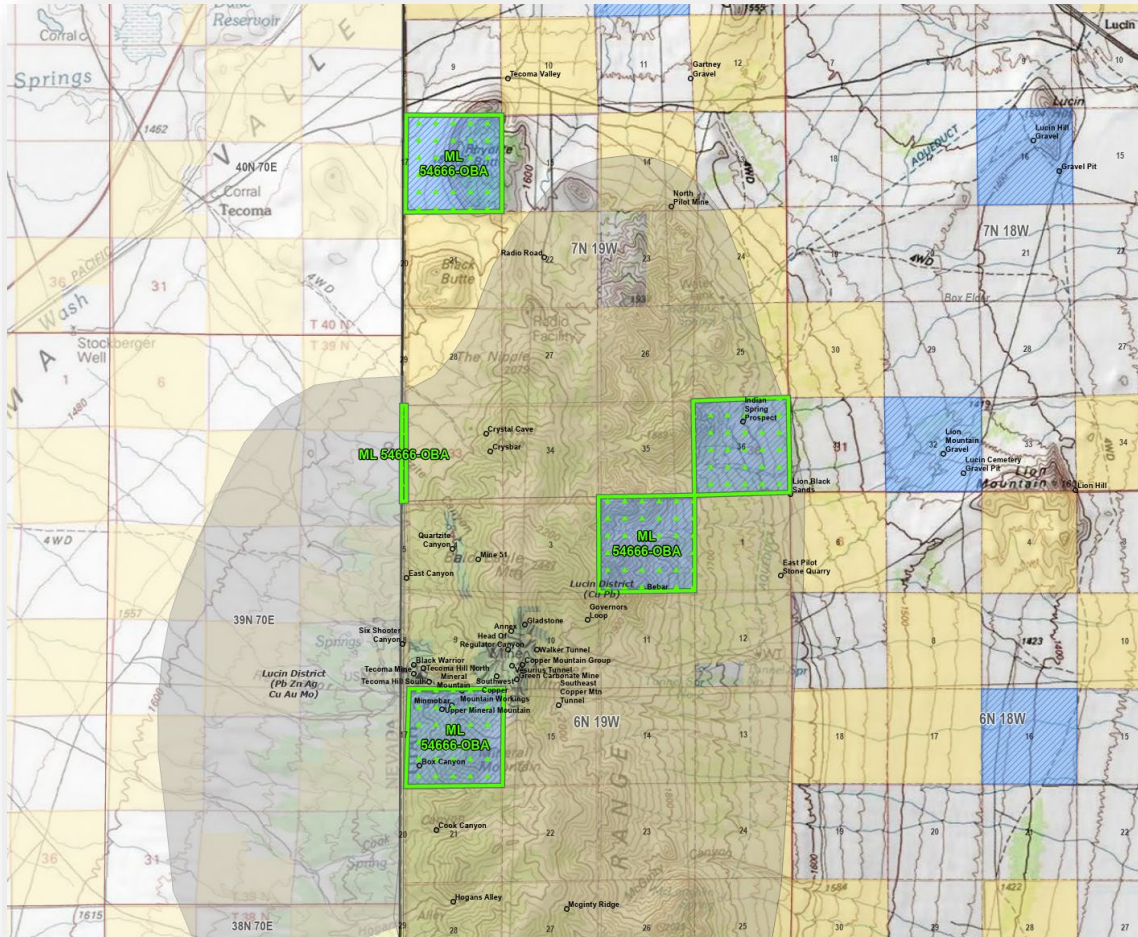
Utah Critical Mineral Status

- Current production
- Recent production/known resource
- Past production
- Occurrences (limited potential)
- No known potential



Overview & Proposed Terms

- ☐ T6-7N, R19W, Box Elder County
- ☐ ~2,585.00 total acres (100% Schools)
- ☐ Five-year Exploration Agreement with work commitments
- ☐ Option to Lease (Ten-year Primary Term) contingent on completion of work commitments and NI 43-101 report or feasibility study
- ☐ One-time \$10,000.00 signing bonus
- ☐ Five-year escalated annual rental from \$3.00 per acre to \$7.00 per acre
- ☐ 4% gross royalty on non-fissionable metalliferous minerals; 8% gross royalty on fissionable minerals, if applicable



Questions?

Thank You