



# DAI-MOTION TOWNHOMES DESIGN PACKAGE

TAYLORSVILLE, UTAH

12 NOV 2025





# DAI-MOTION TOWNHOMES DESIGN PACKAGE

TAYLORSVILLE, UTAH

REAR LOAD  
EVEREST-OPTION-1

**D101**

12 NOV 2025





## DAI-MOTION TOWNHOMES DESIGN PACKAGE

TAYLORSVILLE, UTAH

FLEX GEN 4-PLEX-01  
EXTERIOR VIEW

**D102**

12 NOV 2025





# DAI-MOTION TOWNHOMES DESIGN PACKAGE

TAYLORSVILLE, UTAH

FLEX GEN 4-PLEX-01  
EXTERIOR VIEW

**D103**

12 NOV 2025





## DAI-MOTION TOWNHOMES DESIGN PACKAGE

TAYLORSVILLE, UTAH

FLEX GEN 4-PLEX-01  
EXTERIOR VIEW

**D104**

12 NOV 2025





# DAI-MOTION TOWNHOMES DESIGN PACKAGE

TAYLORSVILLE, UTAH

ENTRY VIEW-1-OPTION-1

**D107**

12 NOV 2025





## DAI-MOTION TOWNHOMES DESIGN PACKAGE

TAYLORSVILLE, UTAH

ENTRY VIEW-2-OPTION-1

**D108**

12 NOV 2025





# DAI-MOTION TOWNHOMES DESIGN PACKAGE

TAYLORSVILLE, UTAH

ENTRY VIEW-3-OPTION-1

**D109**

12 NOV 2025





# DAI-MOTION TOWNHOMES DESIGN PACKAGE

TAYLORSVILLE, UTAH

VIEW-1-OPTION-1

**D110**

12 NOV 2025





# DAI-MOTION TOWNHOMES DESIGN PACKAGE

TAYLORSVILLE, UTAH

COURTYARD  
VIEW-2-OPTION-1

**D111**

12 NOV 2025





# DAI-MOTION TOWNHOMES DESIGN PACKAGE

TAYLORSVILLE, UTAH

COURTYARD  
VIEW-3-OPTION-1

D112

12 NOV 2025





# DAI-MOTION TOWNHOMES DESIGN PACKAGE

TAYLORSVILLE, UTAH

COURTYARD  
VIEW-4-OPTION-1

D113

12 NOV 2025





# DAI-MOTION TOWNHOMES DESIGN PACKAGE

TAYLORSVILLE, UTAH

VIEW-1-OPTION-2

**D114.**

12 NOV 2025





# DAI-MOTION TOWNHOMES DESIGN PACKAGE

TAYLORSVILLE, UTAH

VIEW-2-OPTION-2

D115.

12 NOV 2025





## DAI-MOTION TOWNHOMES DESIGN PACKAGE

TAYLORSVILLE, UTAH

VIEW-3-OPTION-2

**D116.**

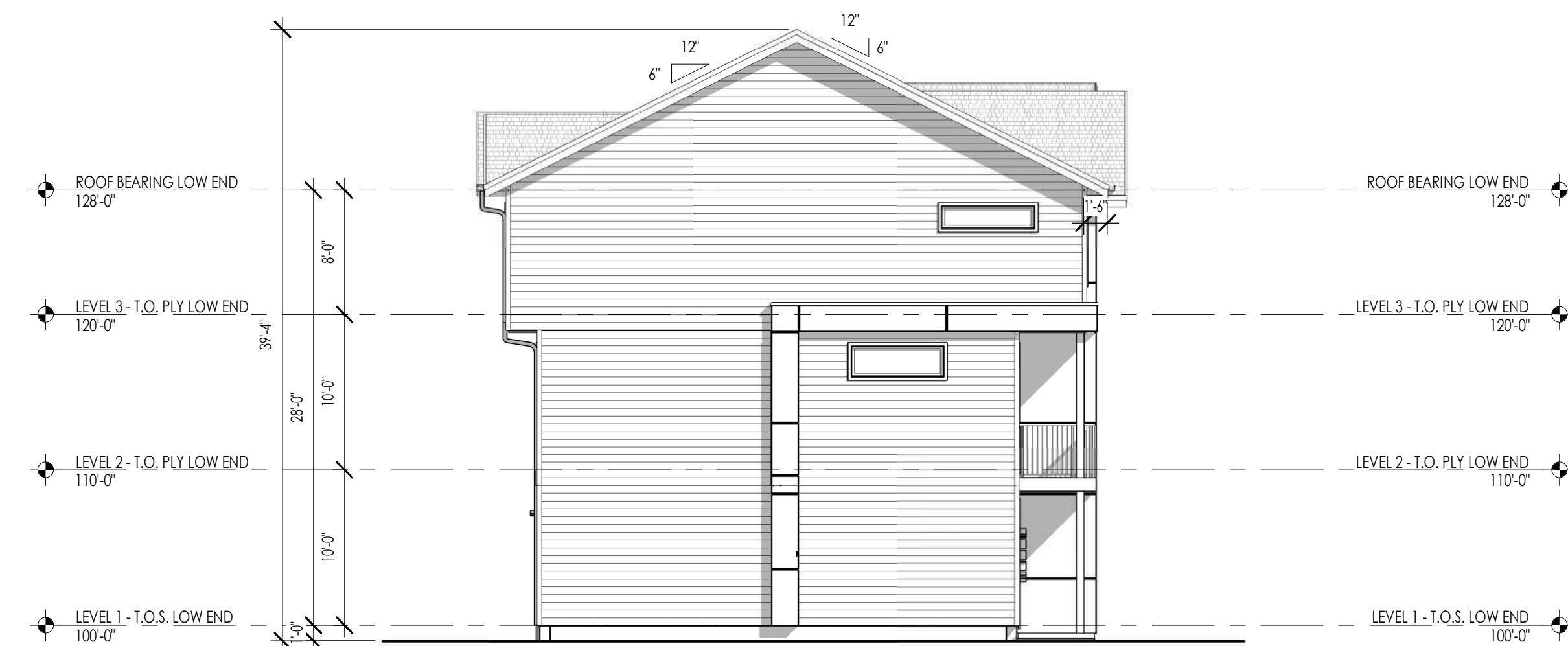
12 NOV 2025





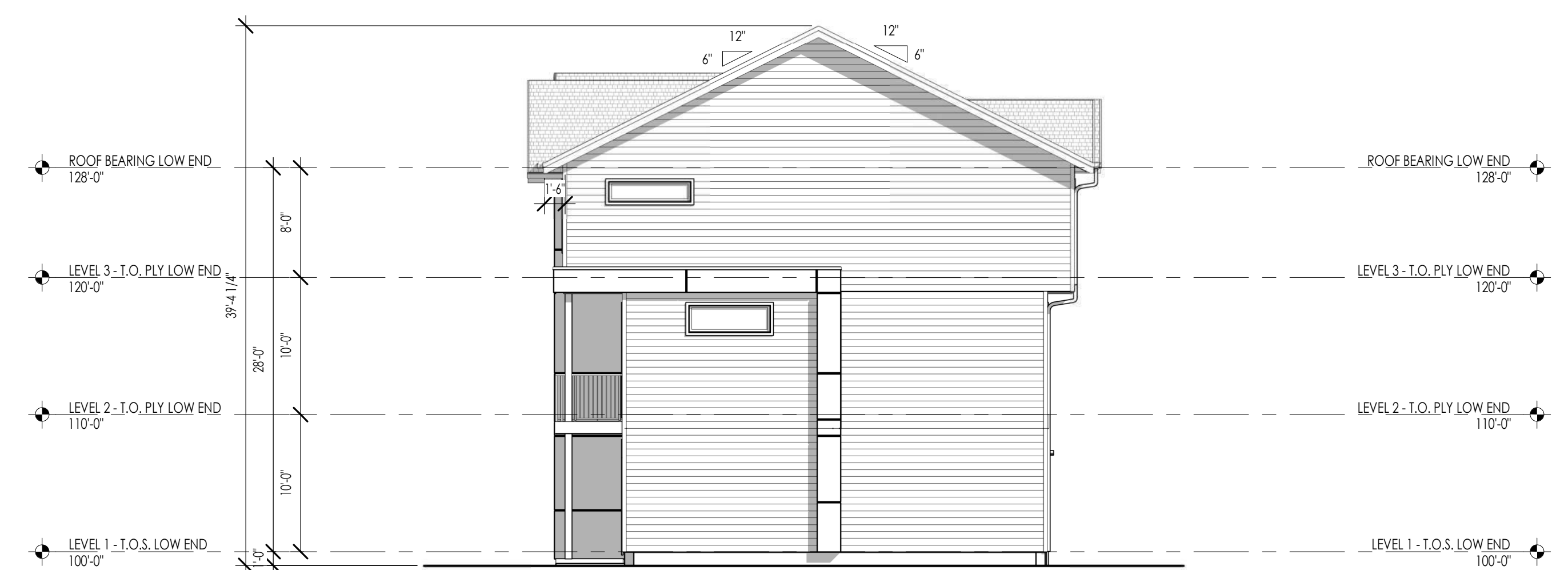
FRONT ELEVATION SD  
1/8" = 1'-0"

1  
D201



LEFT ELEVATION SD  
1/8" = 1'-0"

2  
D201



RIGHT ELEVATION SD  
1/8" = 1'-0"

3  
D201

REFER TO RENDERINGS AND MATERIAL  
BOARD FOR COLOR/MATERIAL SELECTIONS





REFER TO RENDERINGS AND MATERIAL  
BOARD FOR COLOR/MATERIAL SELECTIONS



The designs shown and described herein including all technical drawings, graphic representation & models thereof, are the copyrighted work of Think Architecture, Inc. and cannot be copied, duplicated, or commercially exploited in whole or in part without the sole and express written permission from Think Architecture, Inc.

## DAI - MOTION TOWNHOMES

7-PLEX-01 FLAT  
EXTERIOR ELEVATIONS

D202

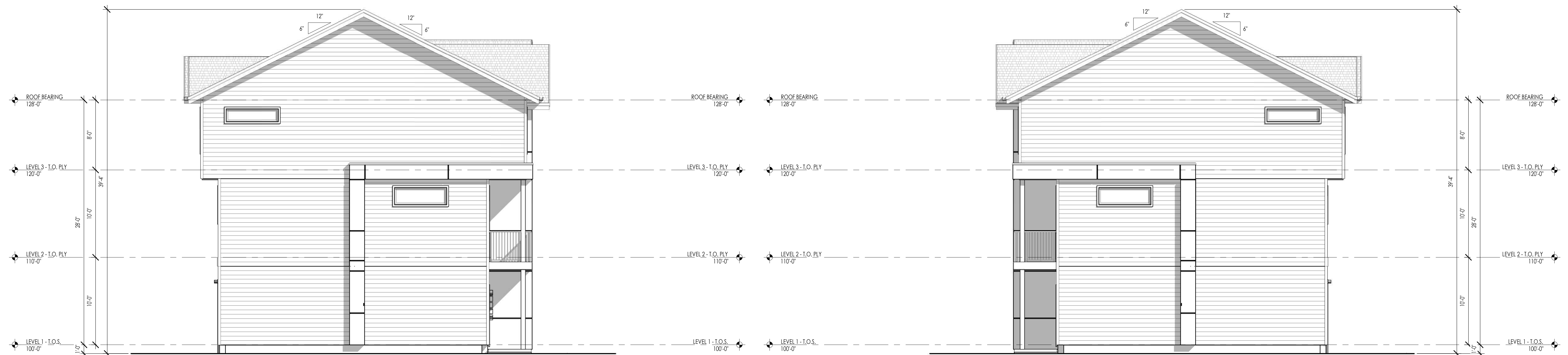
12 NOV 2025





FRONT ELEVATION SD  
3/16" = 1'-0"

1  
D203



LEFT ELEVATION SD  
3/16" = 1'-0"

2  
D203

RIGHT ELEVATION SD  
3/16" = 1'-0"

3  
D203

REFER TO RENDERINGS AND MATERIAL  
BOARD FOR COLOR/MATERIAL SELECTIONS





REAR ELEVATION SD  
3/16" = 1'-0"

1  
D204

REFER TO RENDERINGS AND MATERIAL  
BOARD FOR COLOR/MATERIAL SELECTIONS



The designs shown and described herein including all technical drawings, graphic representation & models thereof, are the copyrighted work of Think Architecture, Inc. and cannot be copied, duplicated, or commercially exploited in whole or in part without the sole and express written permission from Think Architecture, Inc.

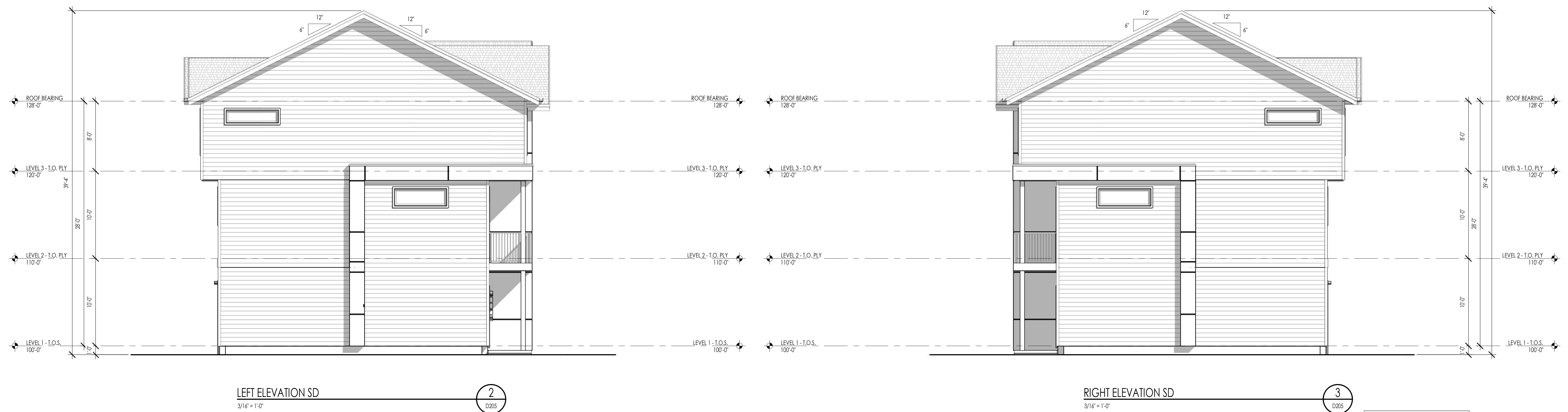
## DAI - MOTION TOWNHOMES

5-PLEX-01 FLAT  
EXTERIOR ELEVATIONS

D204

12 NOV 2025





REFER TO RENDERINGS AND MATERIAL BOARD FOR COLOR/MATERIAL SELECTIONS



The designs shown and described herein including all technical drawings, graphic representation & models thereof, are the copyrighted work of Think Architecture, Inc. and cannot be copied, duplicated, or commercially exploited in whole or in part without the sole and express written permission from Think Architecture, Inc.

# DAI - MOTION TOWNHOMES

6-PLEX-01 FLAT  
EXTERIOR ELEVATIONS

D205

12 NOV 2025



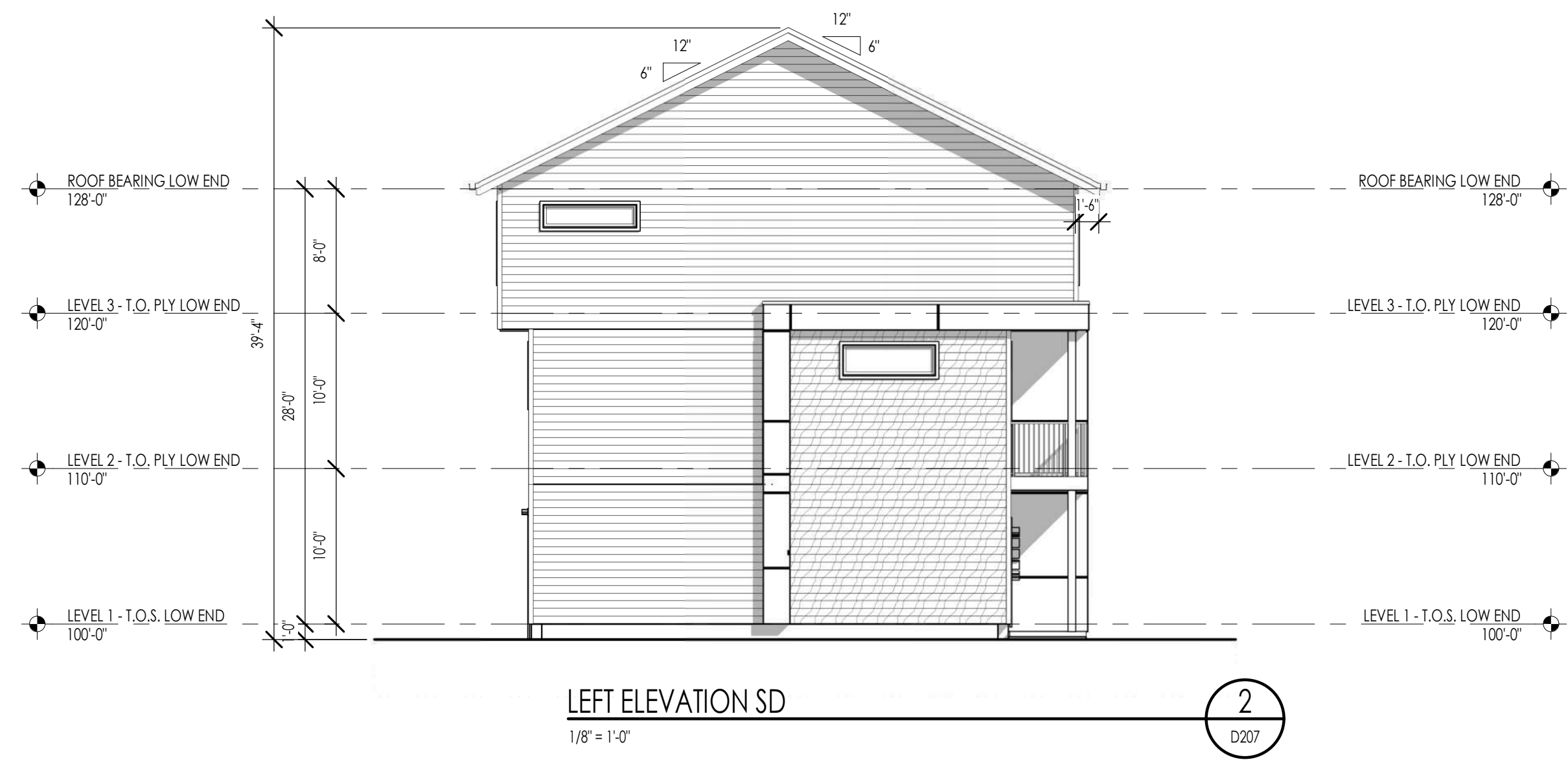


REAR ELEVATION SD  
3/16" = 1'-0"

1  
D206

REFER TO RENDERINGS AND MATERIAL  
BOARD FOR COLOR/MATERIAL SELECTIONS



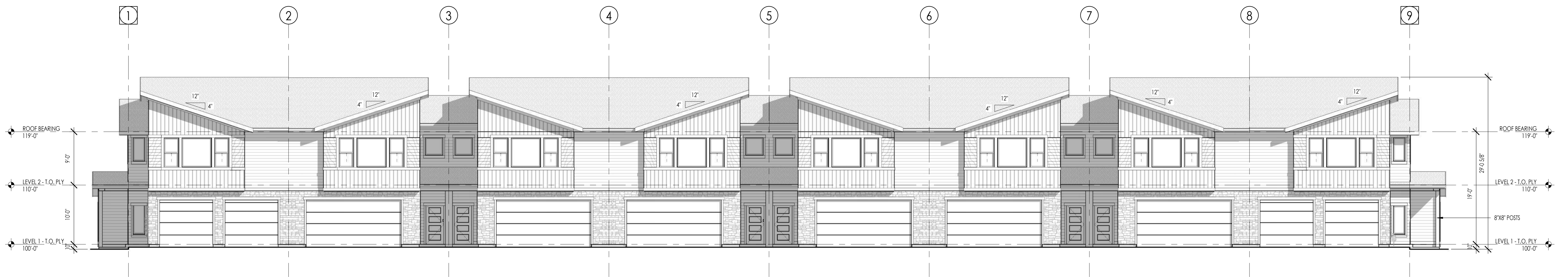


REFER TO RENDERINGS AND MATERIAL BOARD FOR COLOR/MATERIAL SELECTIONS









FRONT ELEVATION SD  
1/8" = 1'-0"

1  
D209

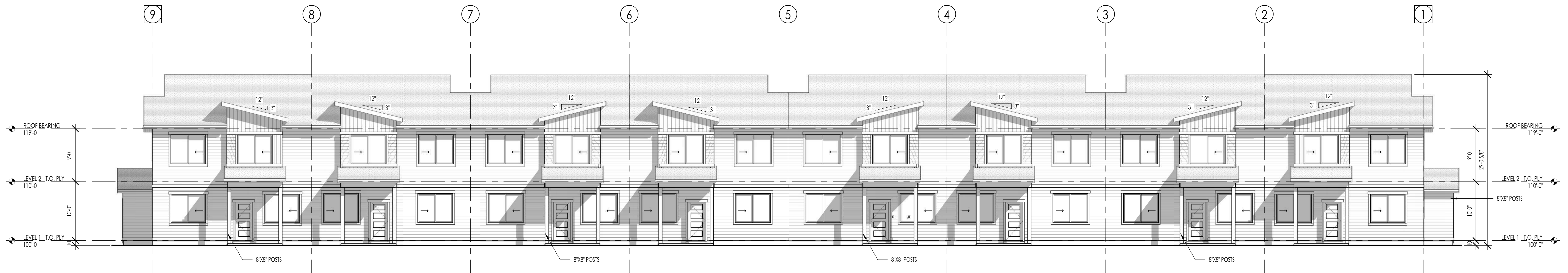


RIGHT. ELEVATION SD  
1/8" = 1'-0"

3  
D209

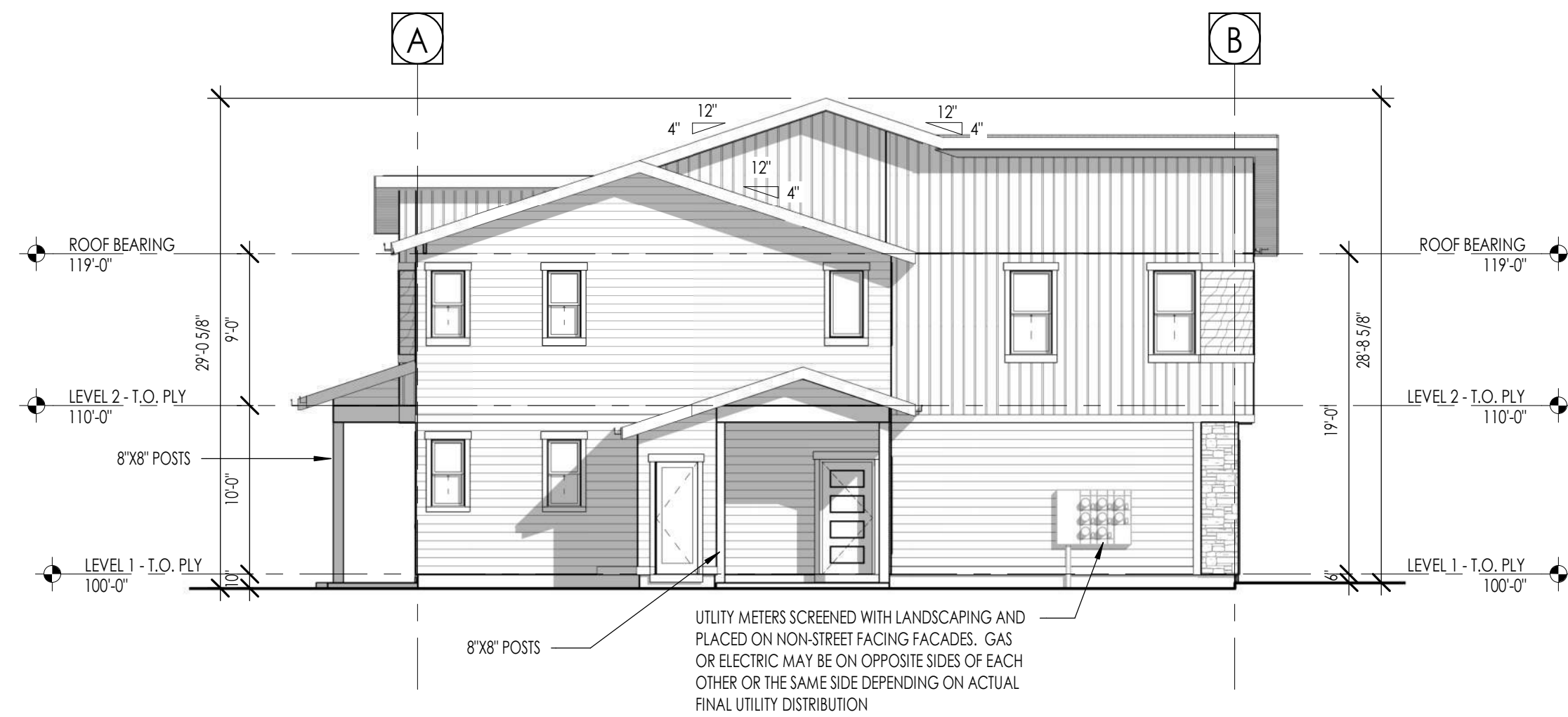
NOTES:  
1. NOTE CONCEPTUAL DRAWINGS. INDIVIDUAL UNITS, ELEVATIONS, BUILDING STEPS AND ROOF TYPES MAY BE CONFIGURED IN VARIOUS WAYS TO MEET THE SITE CONDITIONS.  
2. REFER TO RENDERINGS, COLOR ELEVATIONS AND MATERIAL BOARD FOR COLOR/MATERIAL SELECTIONS.





REAR ELEVATION SD  
1/8" = 1'-0"

1  
D210

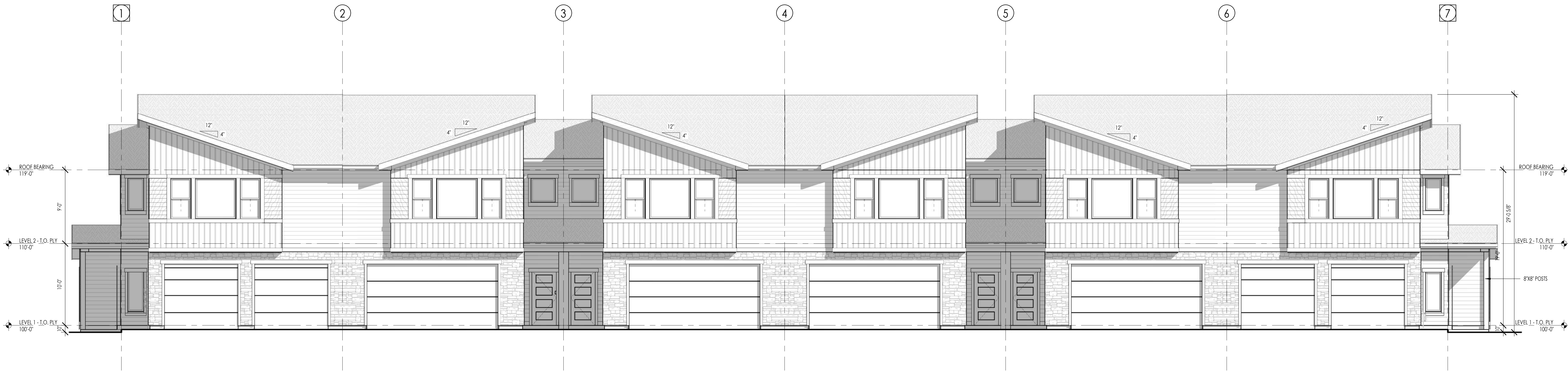


LEFT ELEVATION SD  
1/8" = 1'-0"

2  
D210

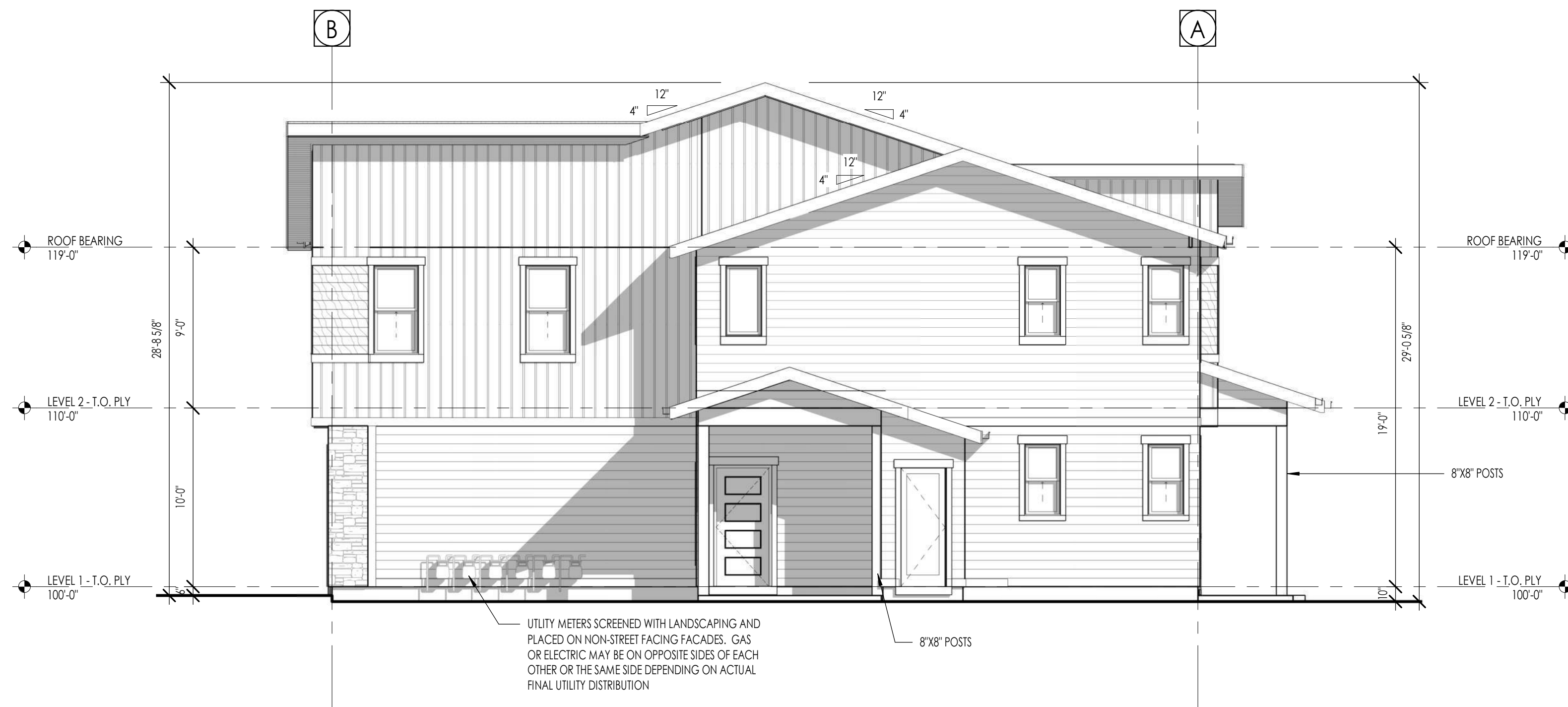
NOTES:  
1. NOTE CONCEPTUAL DRAWINGS : INDIVIDUAL UNITS, ELEVATIONS, BUILDING STEPS AND ROOF TYPES MAY BE CONFIGURED IN VARIOUS WAYS TO MEET THE SITE CONDITIONS  
2. REFER TO RENDERINGS, COLOR ELEVATIONS AND MATERIAL BOARD FOR COLOR/MATERIAL SELECTIONS.





FRONT ELEVATION SD  
3/16" = 1'-0"

1  
D211



RIGHT ELEVATION SD  
3/16" = 1'-0"

3  
D211

NOTES:  
1. NOTE CONCEPTUAL DRAWINGS - INDIVIDUAL UNITS, ELEVATIONS, BUILDING STEPS AND ROOF TYPES MAY BE CONFIGURED IN VARIOUS WAYS TO MEET THE SITE CONDITIONS  
2. REFER TO RENDERINGS, COLOR ELEVATIONS AND MATERIAL BOARD FOR COLOR/MATERIAL SELECTIONS.



The designs shown and described herein including all technical drawings, graphic representation & models thereof, are the copyrighted work of Think Architecture, Inc. and cannot be copied, duplicated, or commercially exploited in whole or in part without the sole and express written permission from Think Architecture, Inc.

## DAI - MOTION TOWNHOMES

IMPERIAL - 6-PLEX  
ELEVATIONS

D211

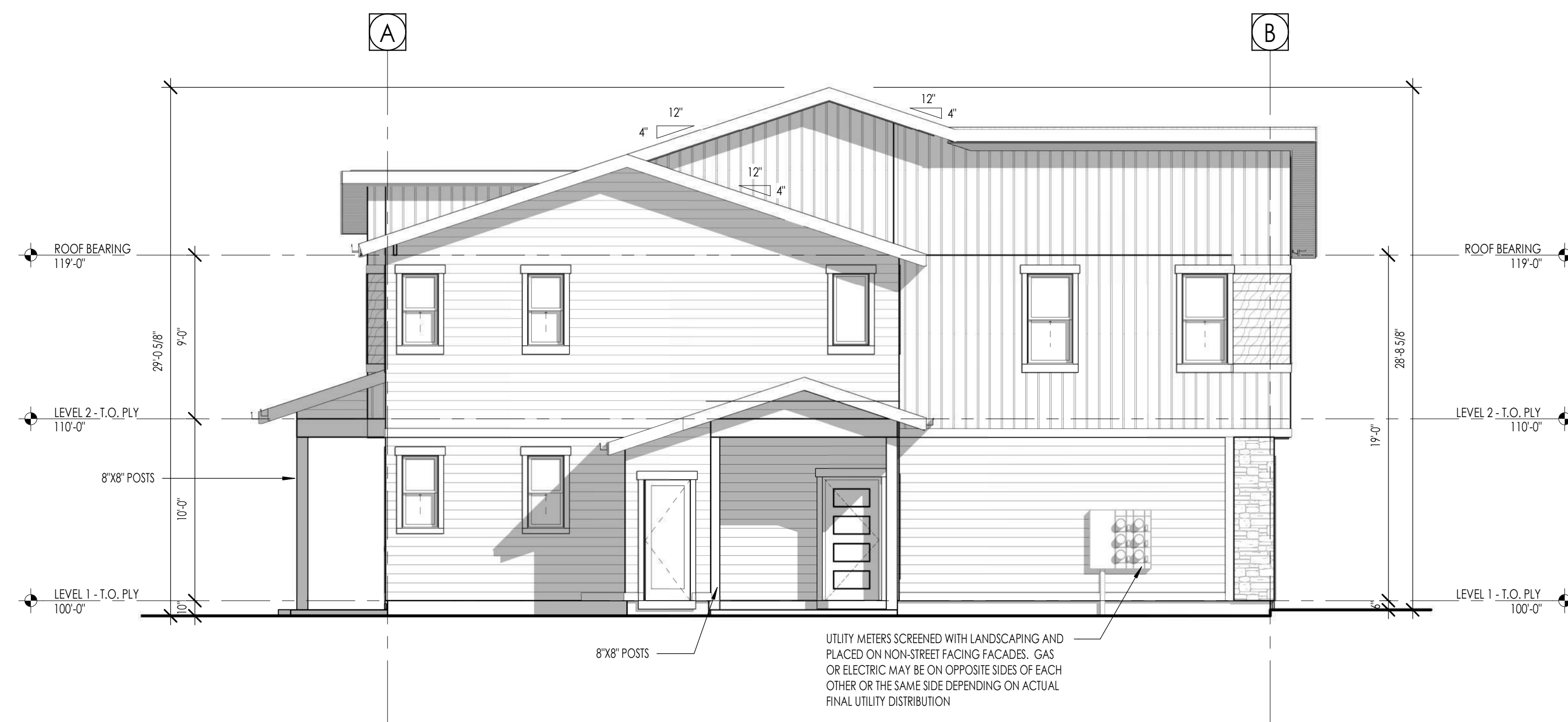
12 NOV 2025





REAR ELEVATION SD  
3/16" = 1'-0"

1  
D212



LEFT ELEVATION SD  
3/16" = 1'-0"

2  
D212

NOTES:  
1. NOTE CONCEPTUAL DRAWINGS : INDIVIDUAL UNITS, ELEVATIONS, BUILDING STEPS AND ROOF TYPES MAY BE CONFIGURED IN VARIOUS  
WAYS TO MEET THE SITE CONDITIONS  
2. REFER TO RENDERINGS, COLOR ELEVATIONS AND MATERIAL BOARD FOR COLOR/MATERIAL SELECTIONS.



The designs shown and described herein including all technical drawings, graphic representation & models  
thereof, are the copyrighted work of Think Architecture, Inc. and cannot be copied, duplicated, or  
commercially exploited in whole or in part without the sole and express written permission from Think  
Architecture, Inc.

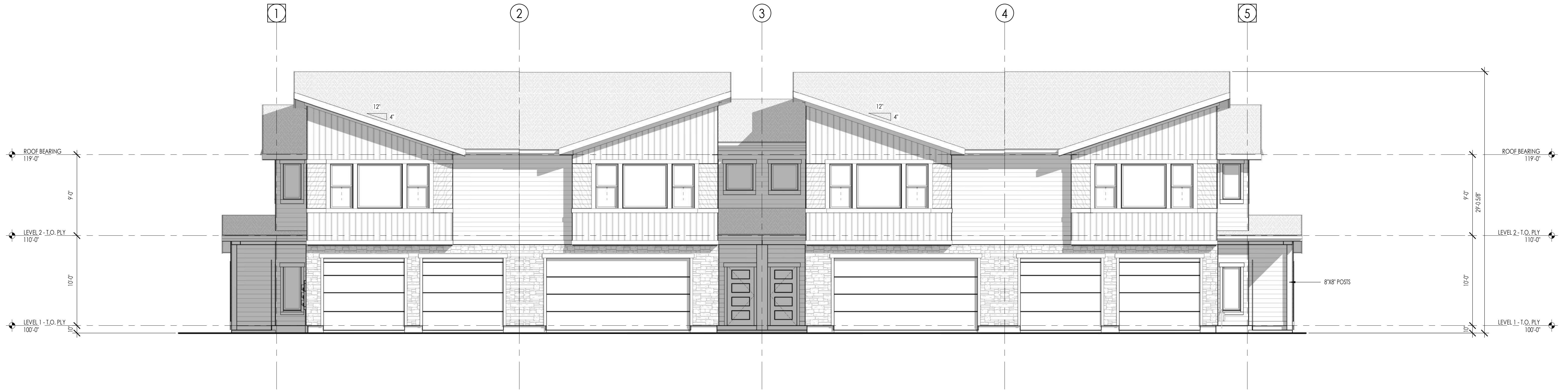
# DAI - MOTION TOWNHOMES

IMPERIAL - 6-PLEX  
ELEVATIONS

D212

12 NOV 2025





FRONT ELEVATION SD  
3/16" = 1'-0"

1  
D213



RIGHT ELEVATION SD  
3/16" = 1'-0"

3  
D213

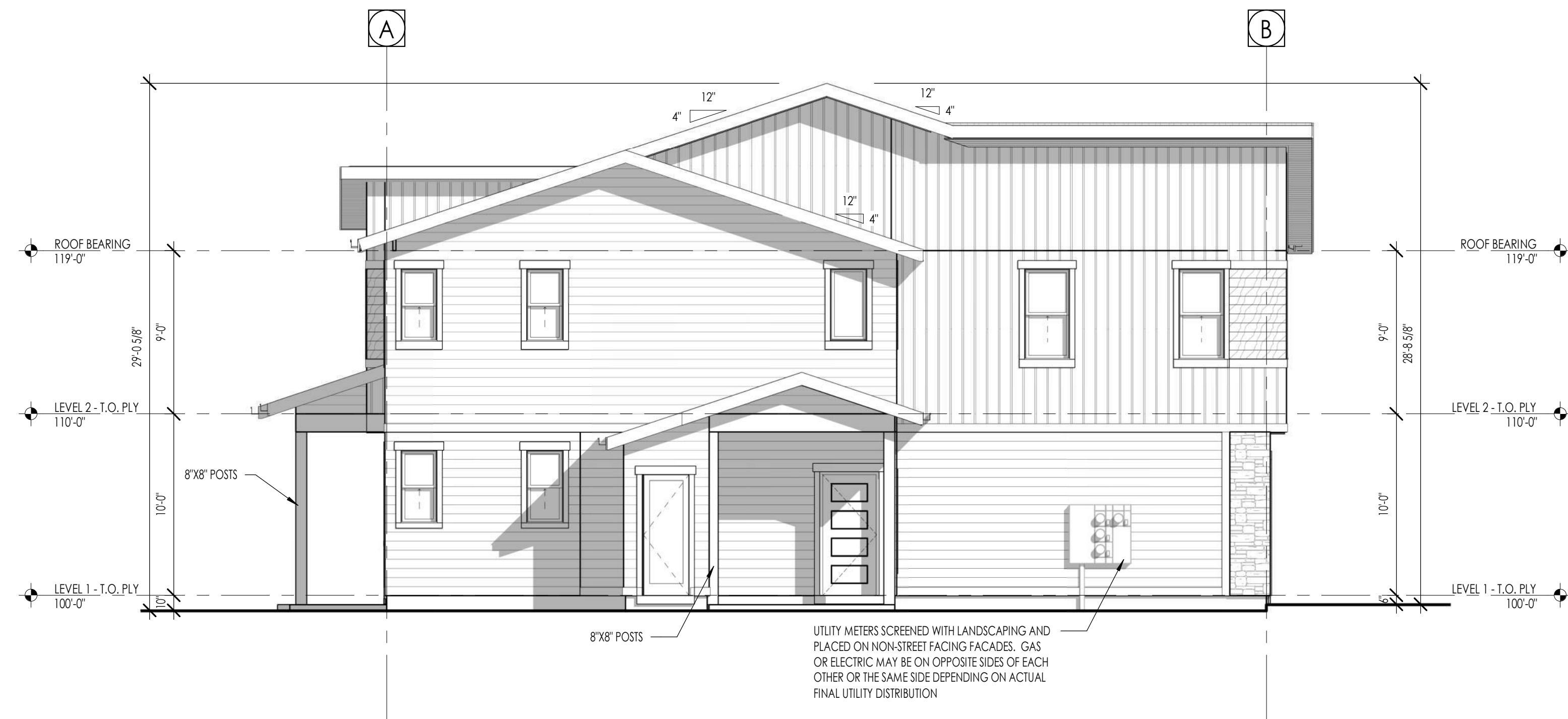
NOTES:  
1. NOTE CONCEPTUAL DRAWINGS - INDIVIDUAL UNITS, ELEVATIONS, BUILDING STEPS AND ROOF TYPES MAY BE CONFIGURED IN VARIOUS WAYS TO MEET THE SITE CONDITIONS  
2. REFER TO RENDERINGS, COLOR ELEVATIONS AND MATERIAL BOARD FOR COLOR/MATERIAL SELECTIONS.





REAR ELEVATION SD  
3/16" = 1'-0"

1  
D214



LEFT ELEVATION SD  
3/16" = 1'-0"

2  
D214

NOTES:  
1. NOTE CONCEPTUAL DRAWINGS : INDIVIDUAL UNITS, ELEVATIONS, BUILDING STEPS AND ROOF TYPES MAY BE CONFIGURED IN VARIOUS WAYS TO MEET THE SITE CONDITIONS  
2. REFER TO RENDERINGS, COLOR ELEVATIONS AND MATERIAL BOARD FOR COLOR/MATERIAL SELECTIONS.



The designs shown and described herein including all technical drawings, graphic representation & models thereof, are the copyrighted work of Think Architecture, Inc. and cannot be copied, duplicated, or commercially exploited in whole or in part without the sole and express written permission from Think Architecture, Inc.

# DAI - MOTION TOWNHOMES

IMPERIAL - 4-PLEX  
ELEVATIONS

D214

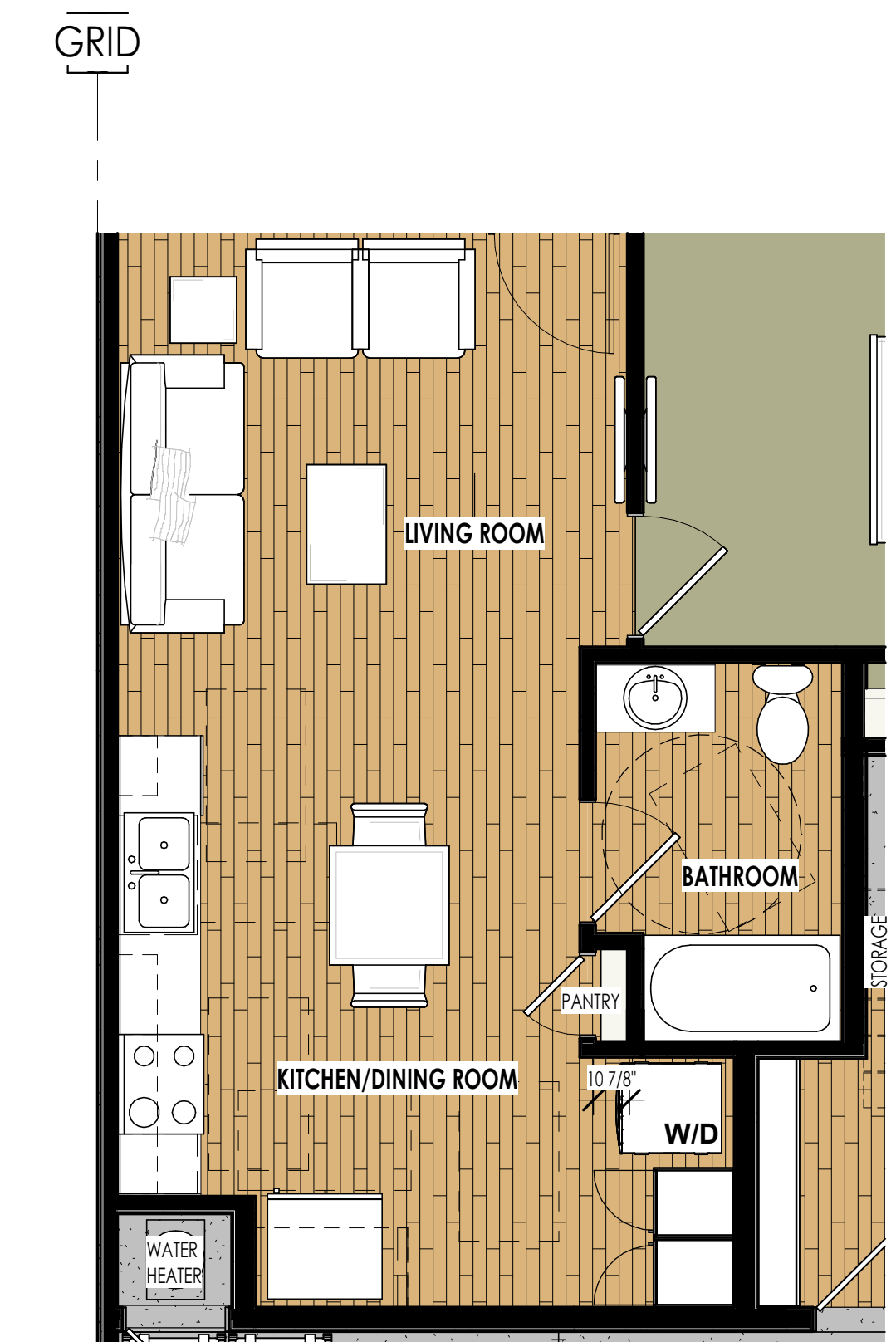
12 NOV 2025





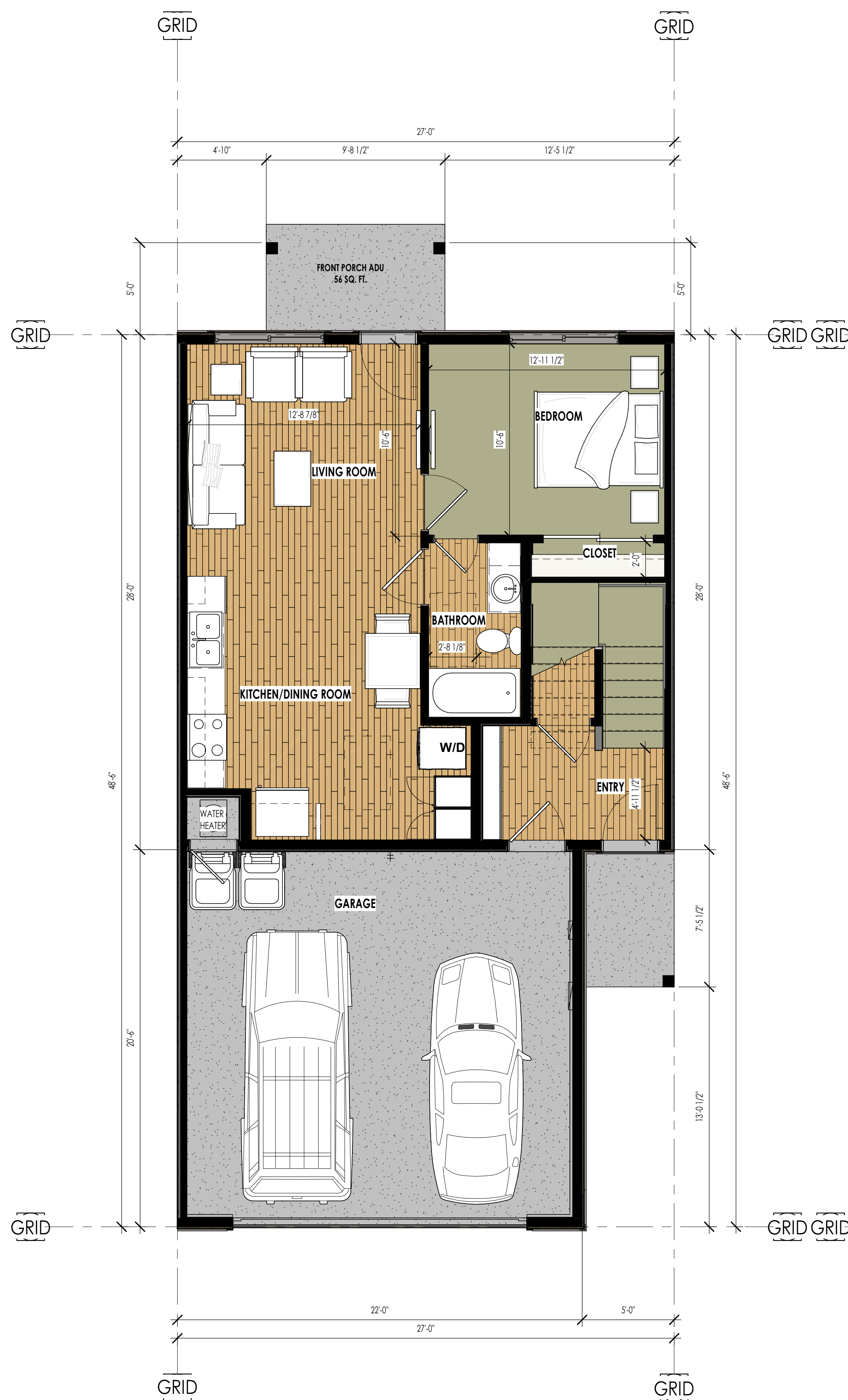
IMPERIAL 1 FINISHED AREAS	
LEVEL	AREA
LEVEL 1 (1ST UNIT)	626 SF
LEVEL 1 (2ND UNIT ENTRY)	129 SF
LEVEL 2	1196 SF
TOTAL	1951 SF
IMPERIAL 1 GARAGE AREAS	
GARAGE	478 SF
TOTAL	478 SF
<b>GRAND TOTAL</b>	<b>2429 SF</b>





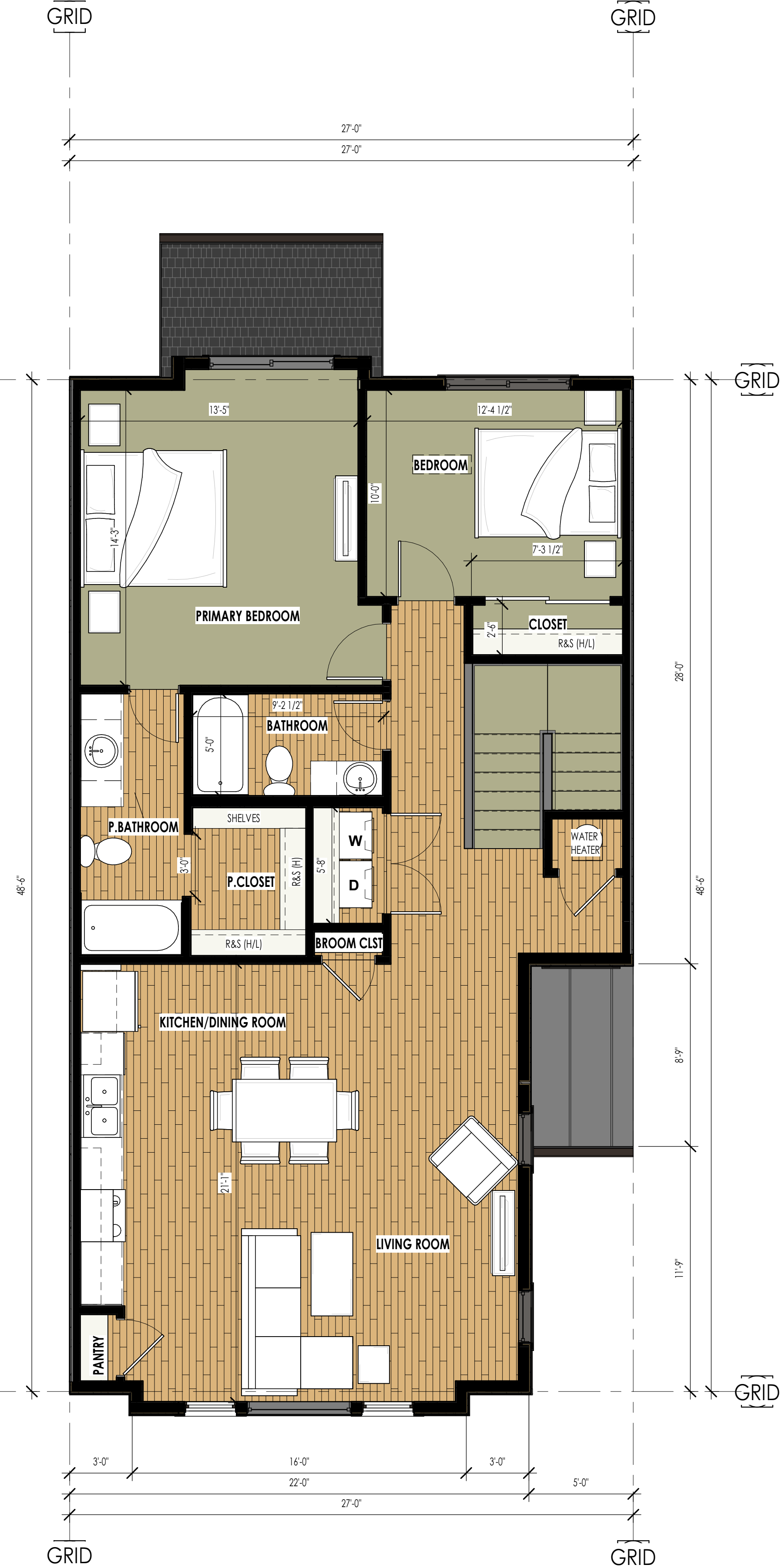
LEVEL 1 - PRESENTATION ADA Type A  
1/4" = 1'-0"

3  
D402



LEVEL 1 - PRESENTATION  
1/4" = 1'-0"

1  
D402



LEVEL 2 - PRESENTATION  
1/4" = 1'-0"

2  
D402

IMPERIAL 2 FINISHED AREAS	
LEVEL	AREA
LEVEL 1 (1ST UNIT)	618 SF
LEVEL 1 (2ND UNIT ENTRY)	129 SF
LEVEL 2	1160 SF
TOTAL	1906 SF
IMPERIAL 2 GARAGE AREAS	
GARAGE	448 SF
TOTAL	448 SF
GRAND TOTAL	
AREA	2354 SF



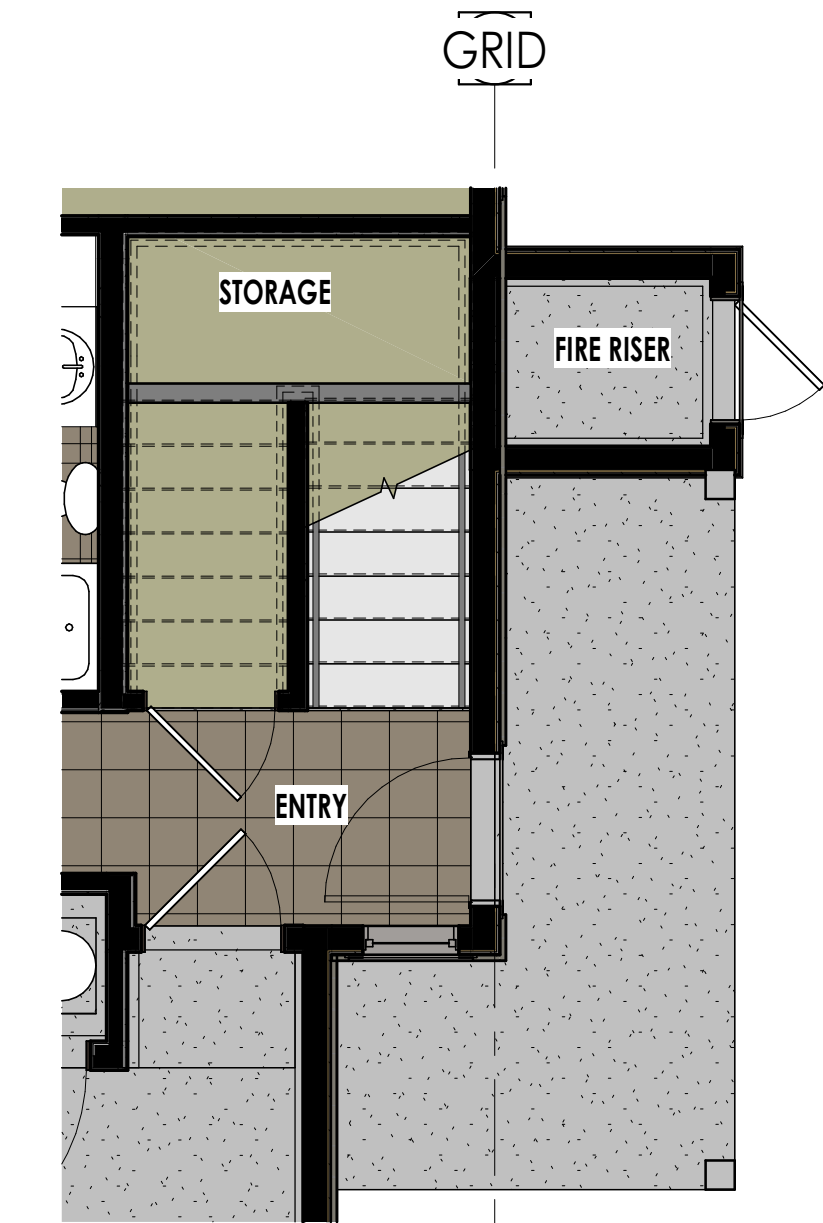
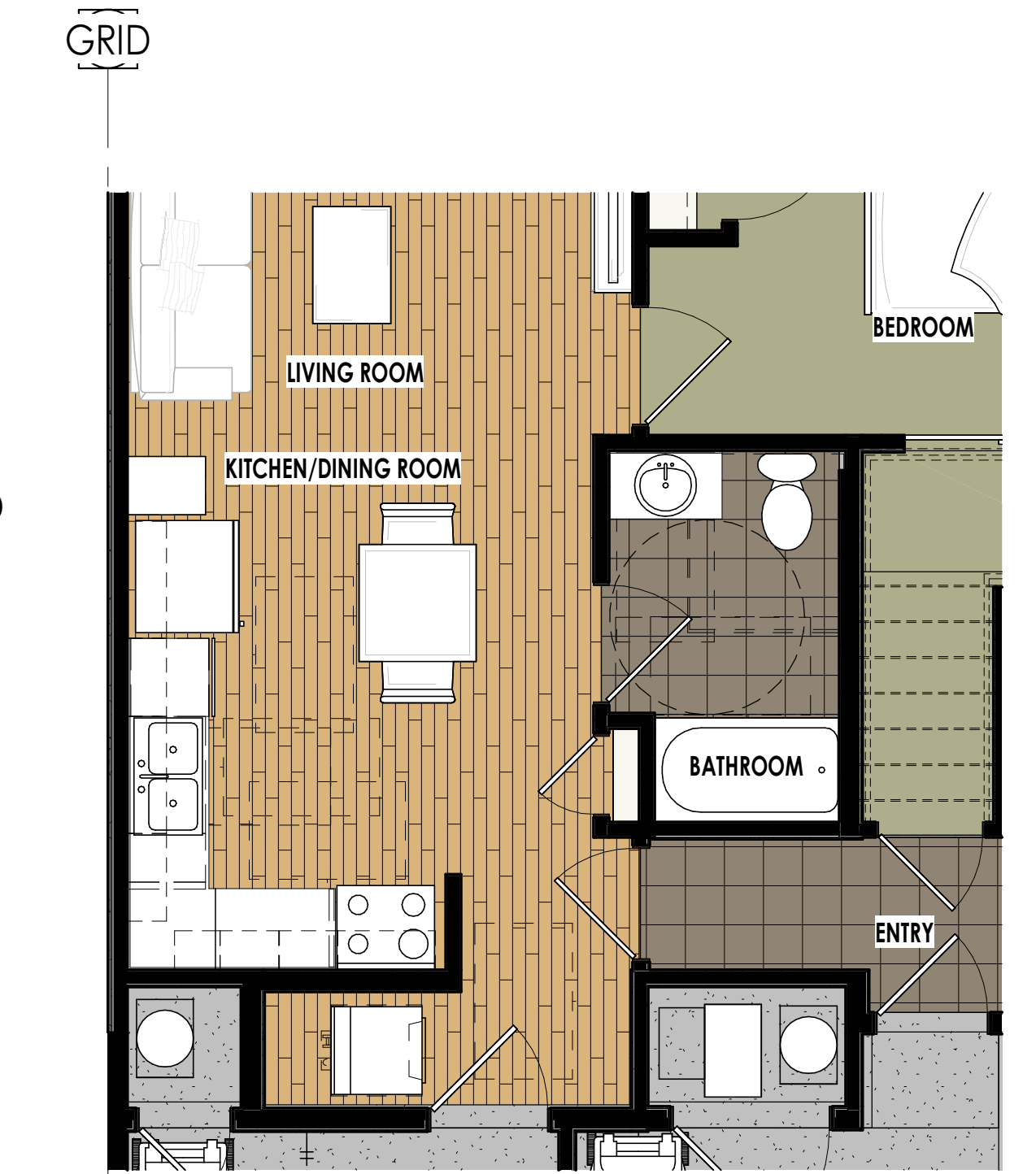
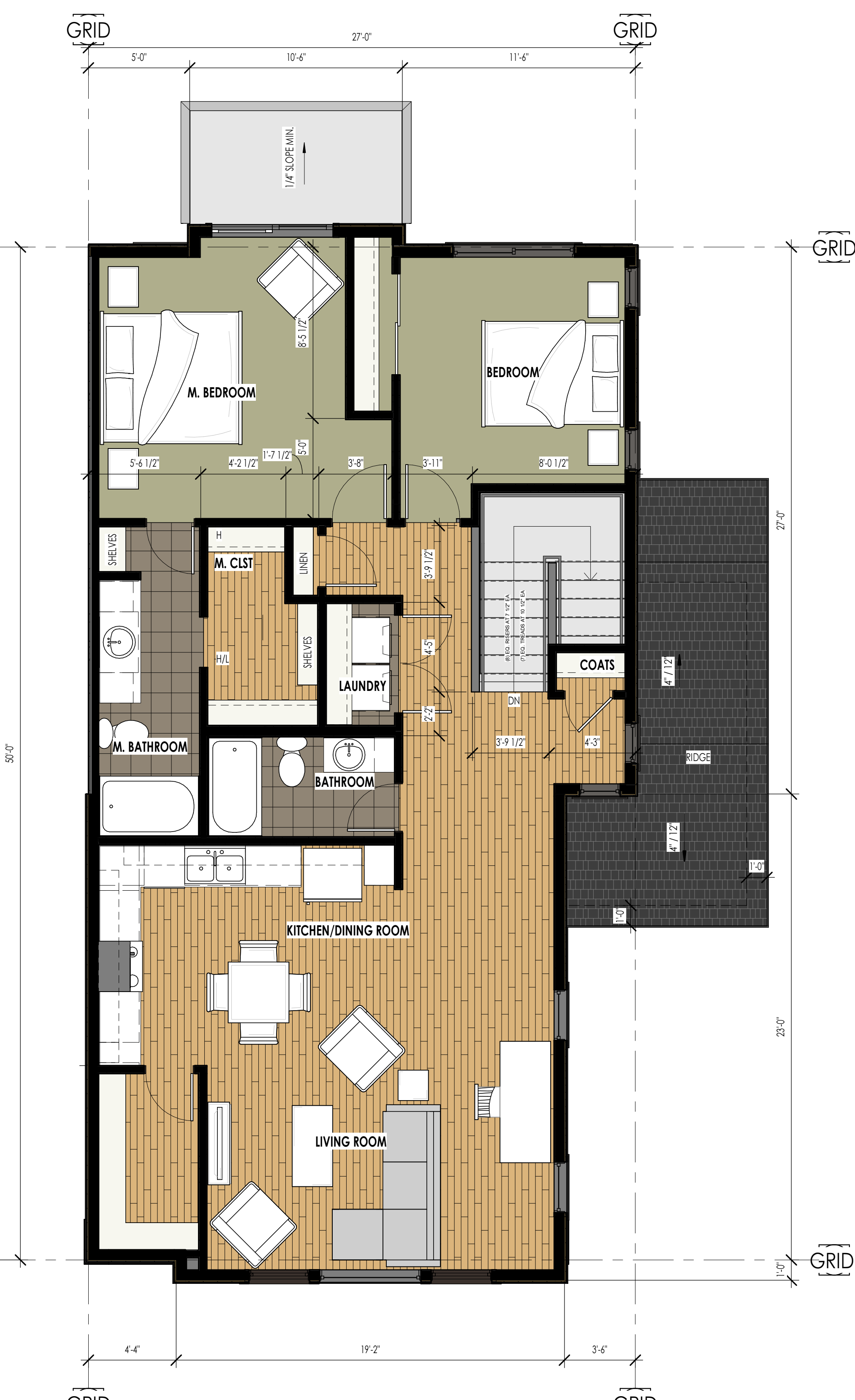


LEVEL 1 - PRESENTATION (FLEX GEN)

1/4" = 1'-0"

1

D401.2



I-01 UNIT (Gross Area)	
Name	AREA
ACCESSORY UNIT	628 SF
2ND UNIT ENTRY	148 SF
2ND FLOOR	1232 SF
TOTAL FINISHED SF	2008 SF
GARAGE	494 SF
TOTAL UNFINISHED SF	494 SF
<b>TOTAL SF</b>	<b>2501 SF</b>





LEVEL 1 - PRESENTATION (FLEX GEN) PANTRY OPTION

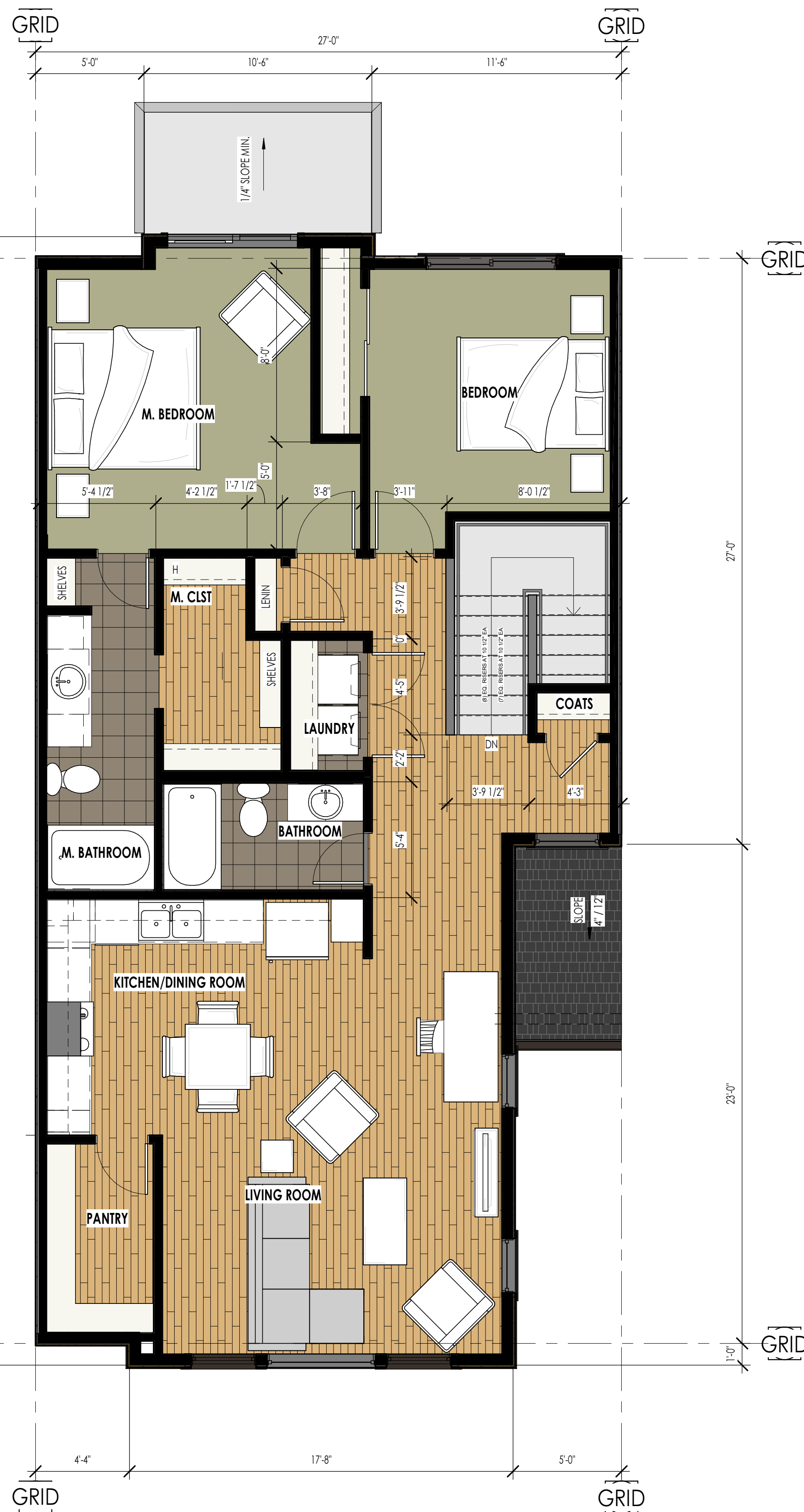
1/4" = 1'-0"

LEVEL 1 - PRESENTATION (FLEX GEN)

1/4" = 1'-0"

1

D402.1

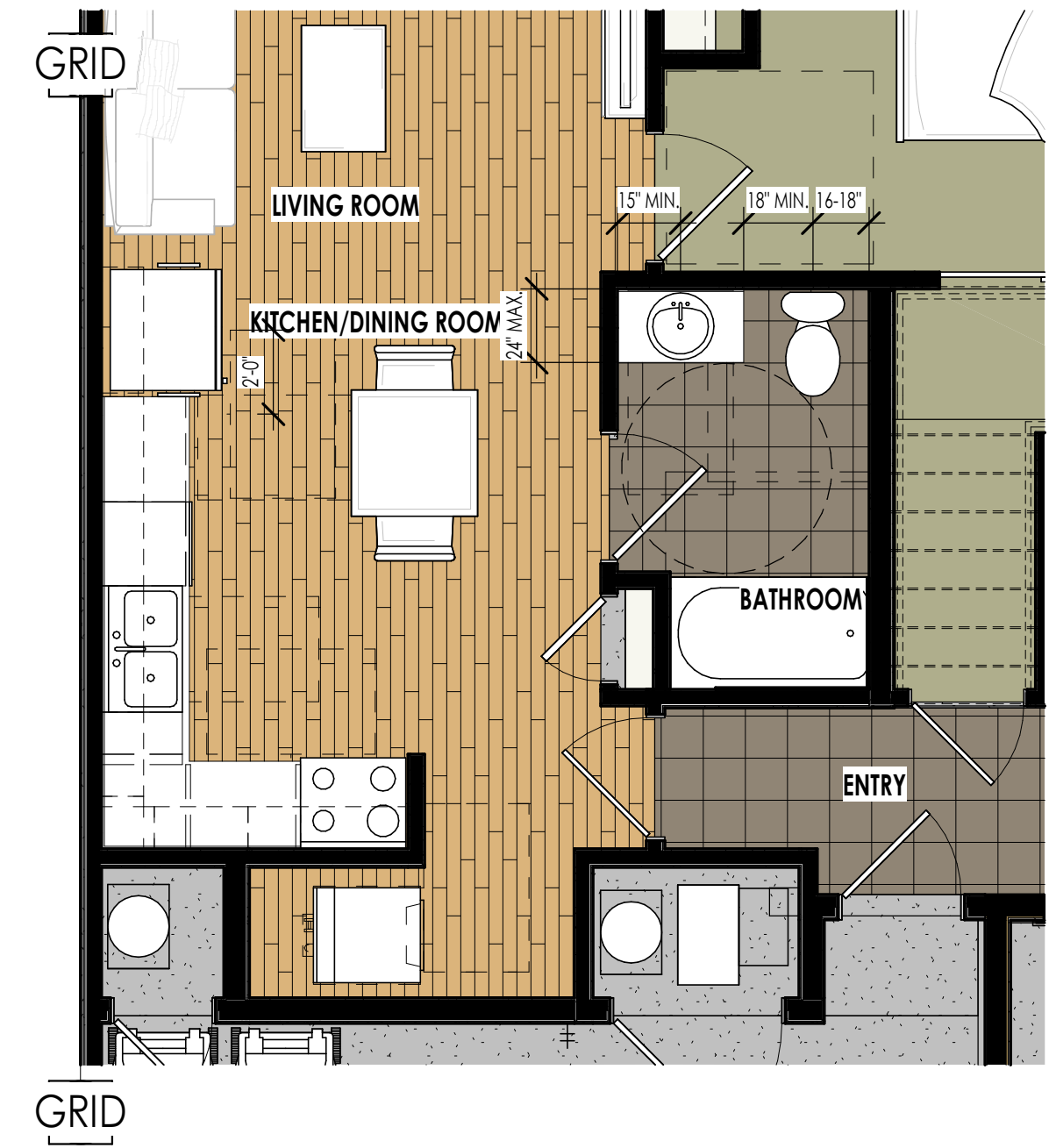


LEVEL 2 - PRESENTATION (FLEX GEN)

1/4" = 1'-0"

2

D402.1



LEVEL 1 - PRESENTATION ADA TYPE A (FLEX GEN)

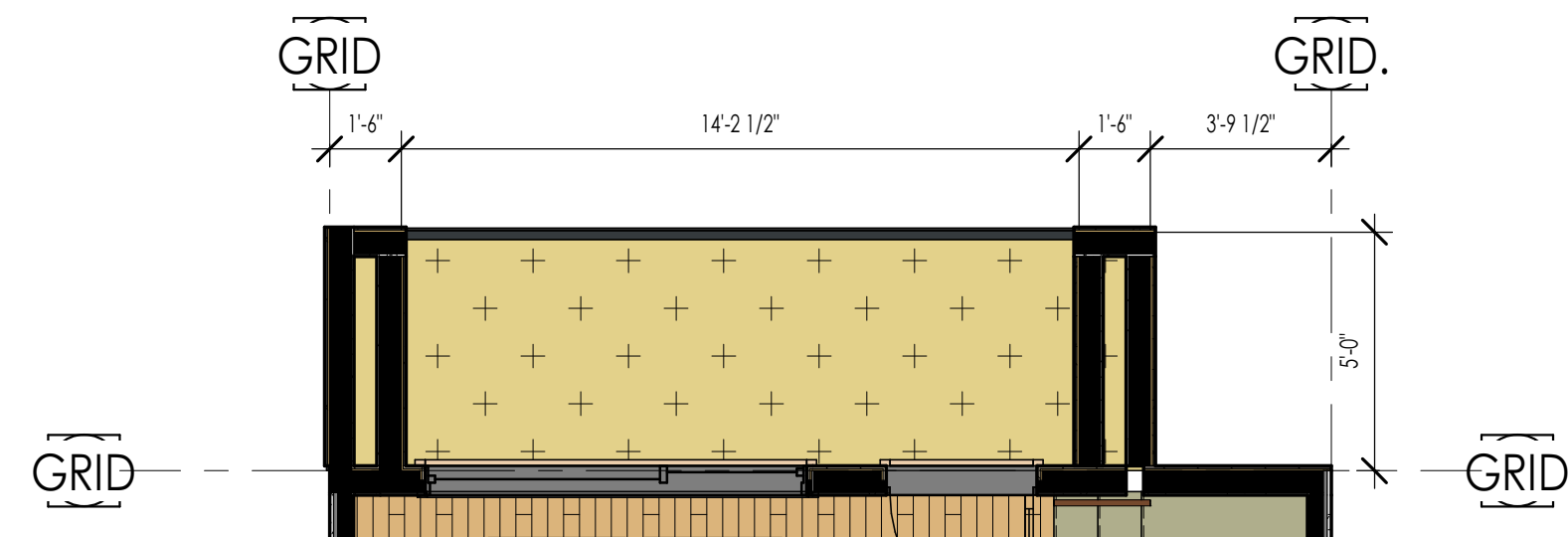
1/4" = 1'-0"

3

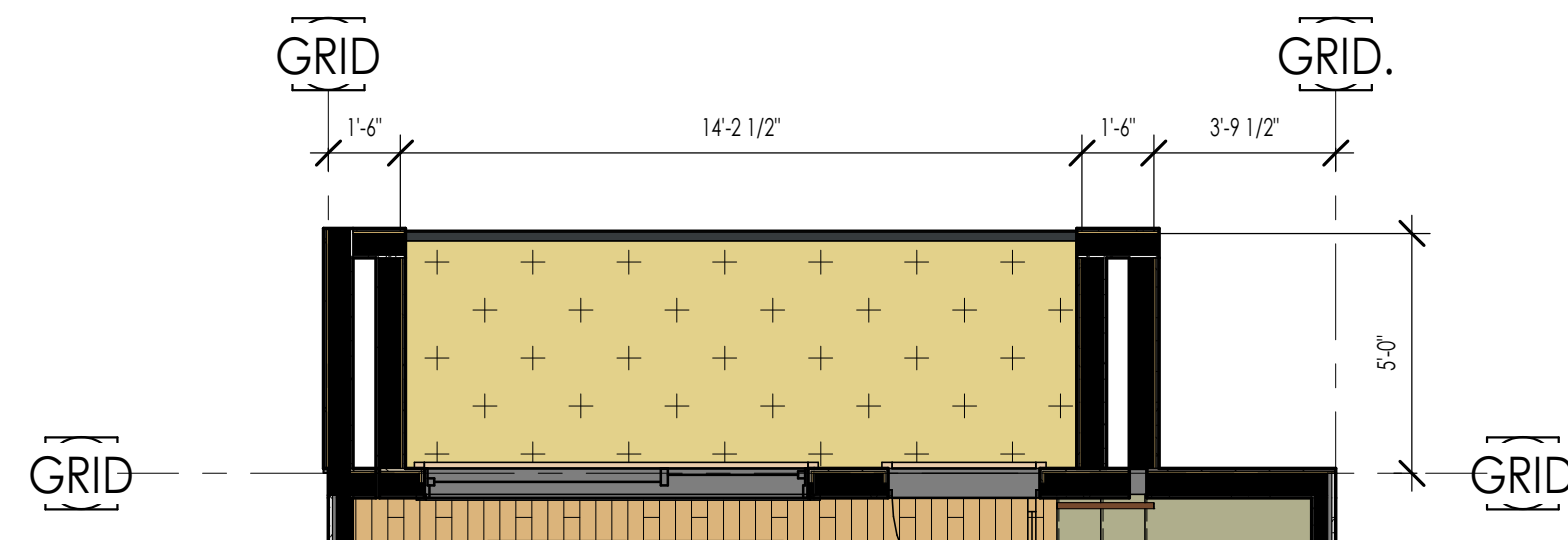
D402.1

I-01 UNIT (Gross Area)	
Name	AREA
ACCESSORY UNIT	623 SF
2ND UNIT ENTRY	116 SF
2ND FLOOR	1196 SF
TOTAL FINISHED SF	1935 SF
GARAGE	496 SF
TOTAL UNFINISHED SF	496 SF
<b>TOTAL SF</b>	<b>2431 SF</b>

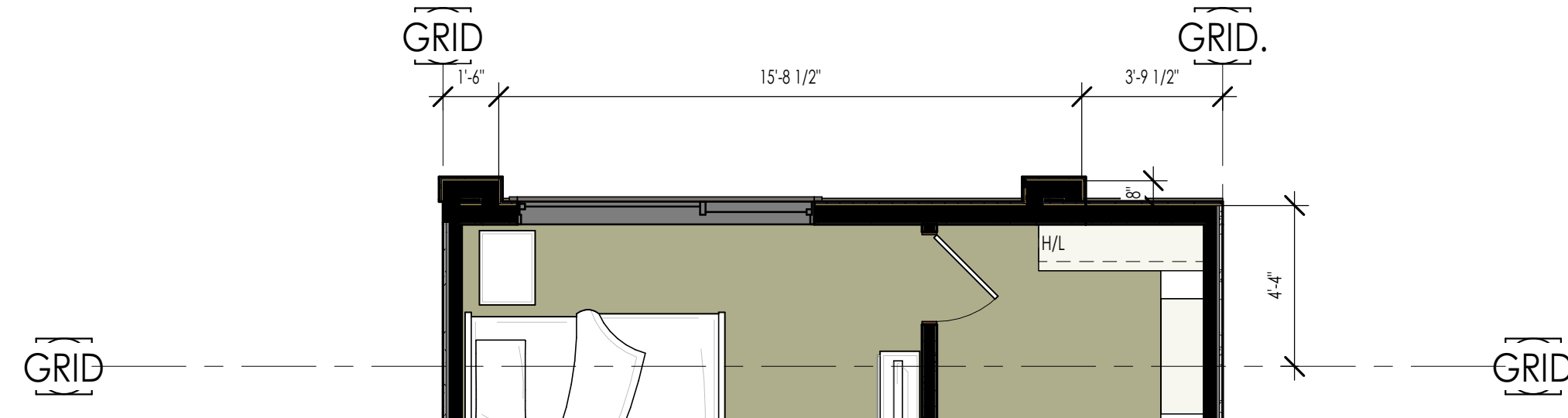




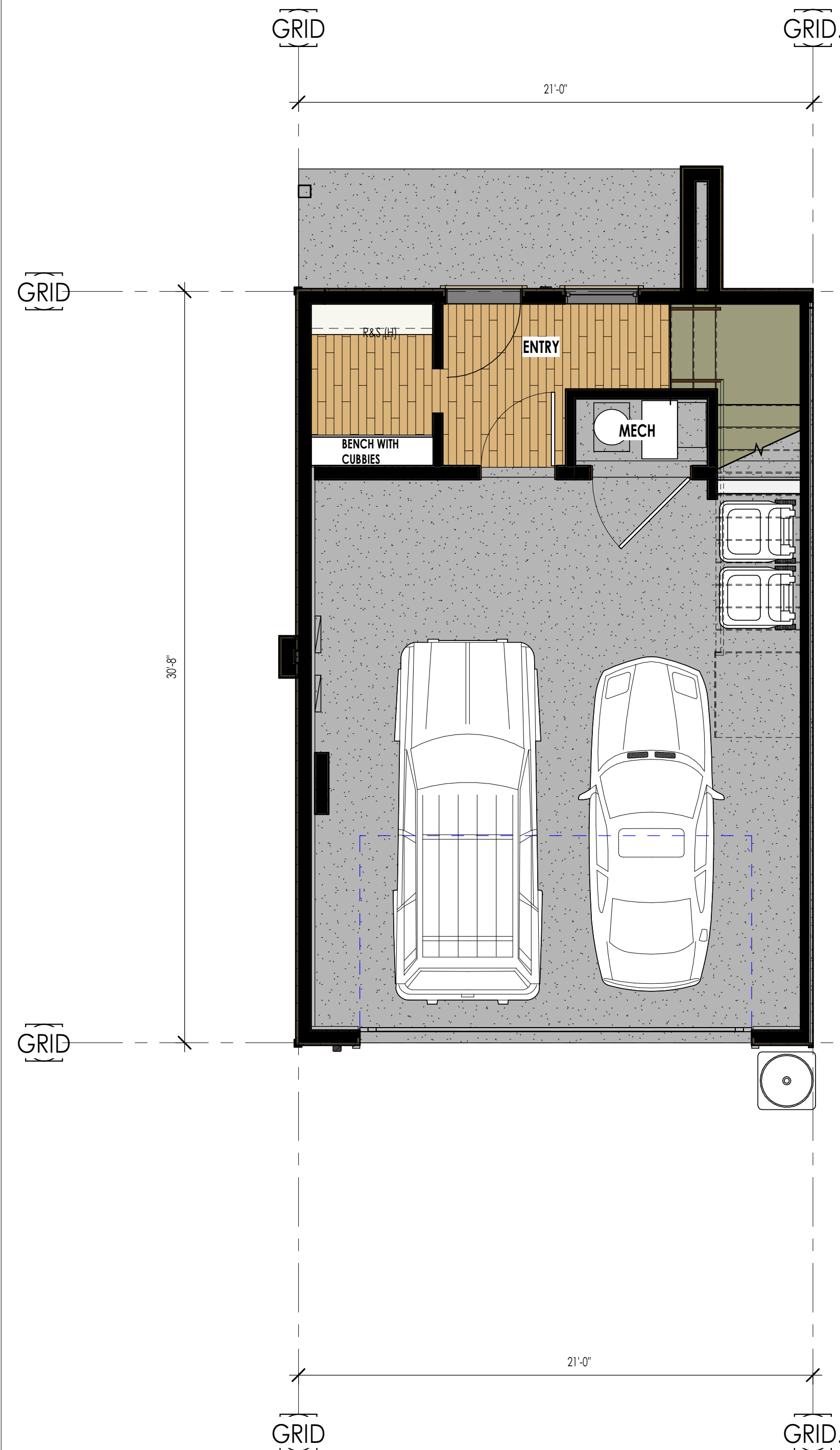
LEVEL 2 (FLAT) - PRESENTATION Middle Unit at Gable  
1/4" = 1'-0"



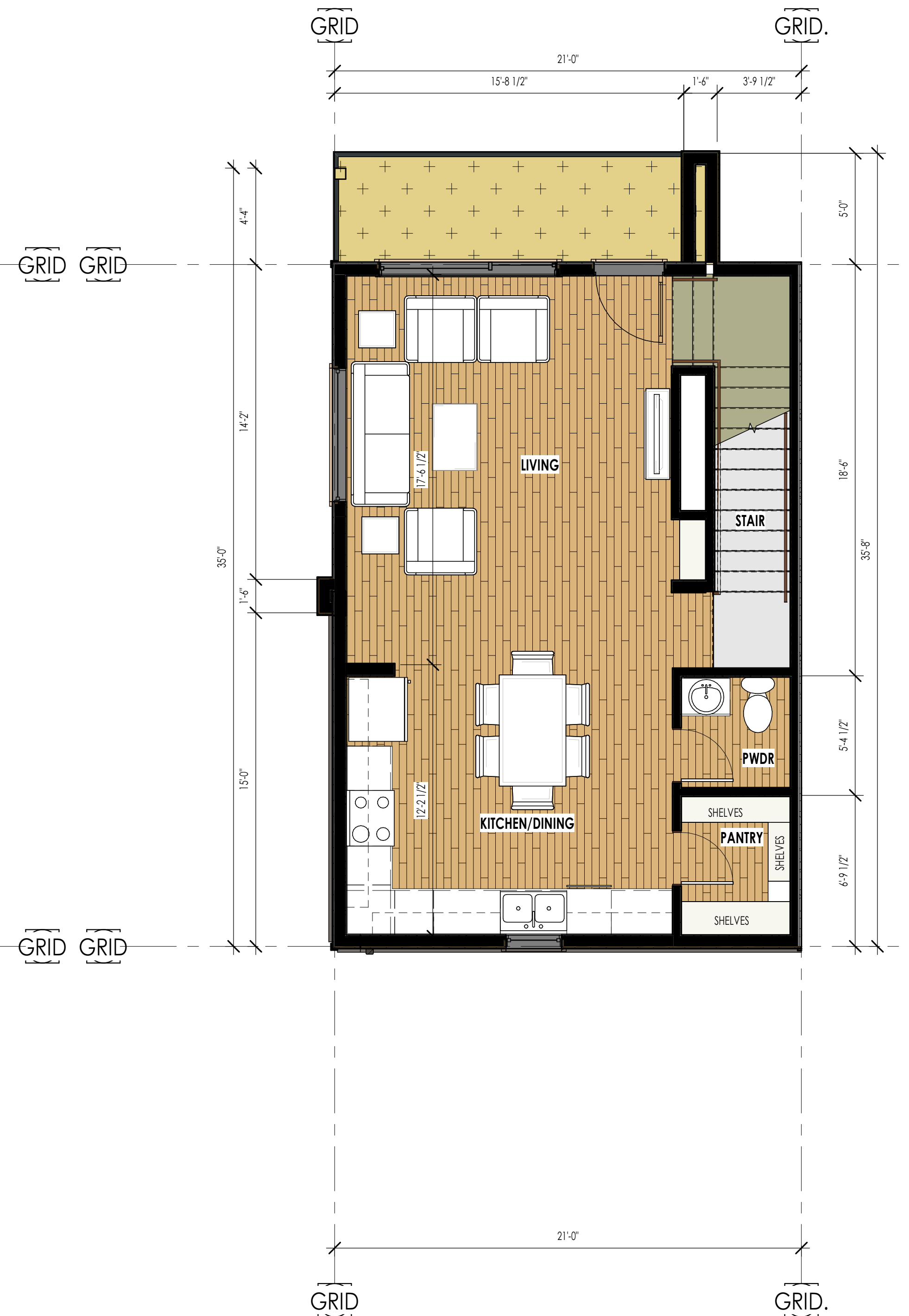
LEVEL 2 (FLAT) - PRESENTATION Middle Unit  
1/4" = 1'-0"



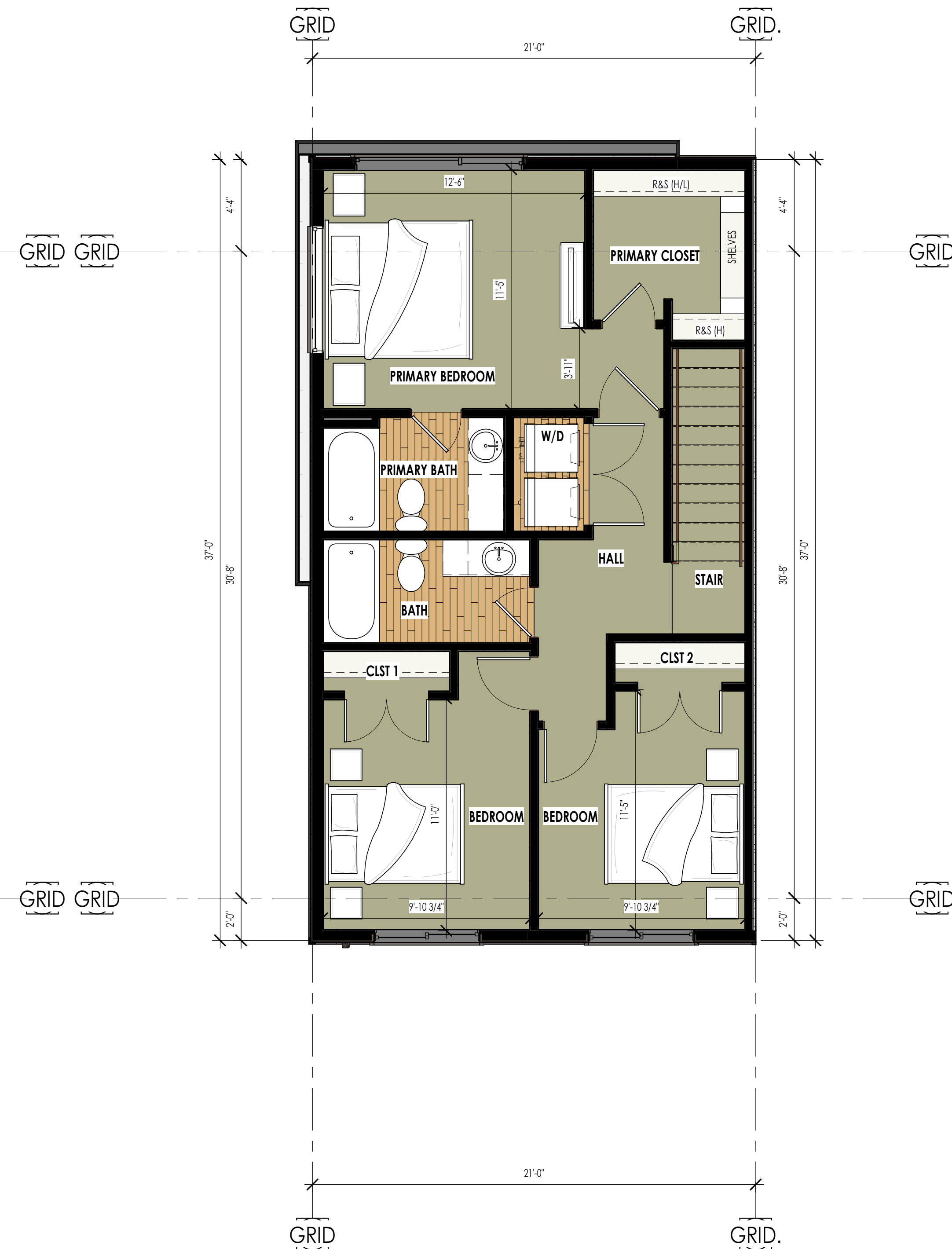
LEVEL 3 (FLAT) - PRESENTATION Middle Unit Gable  
1/4" = 1'-0"



LEVEL 1 (FLAT) - PRESENTATION  
1/4" = 1'-0"



LEVEL 2 (FLAT) - PRESENTATION  
1/4" = 1'-0"



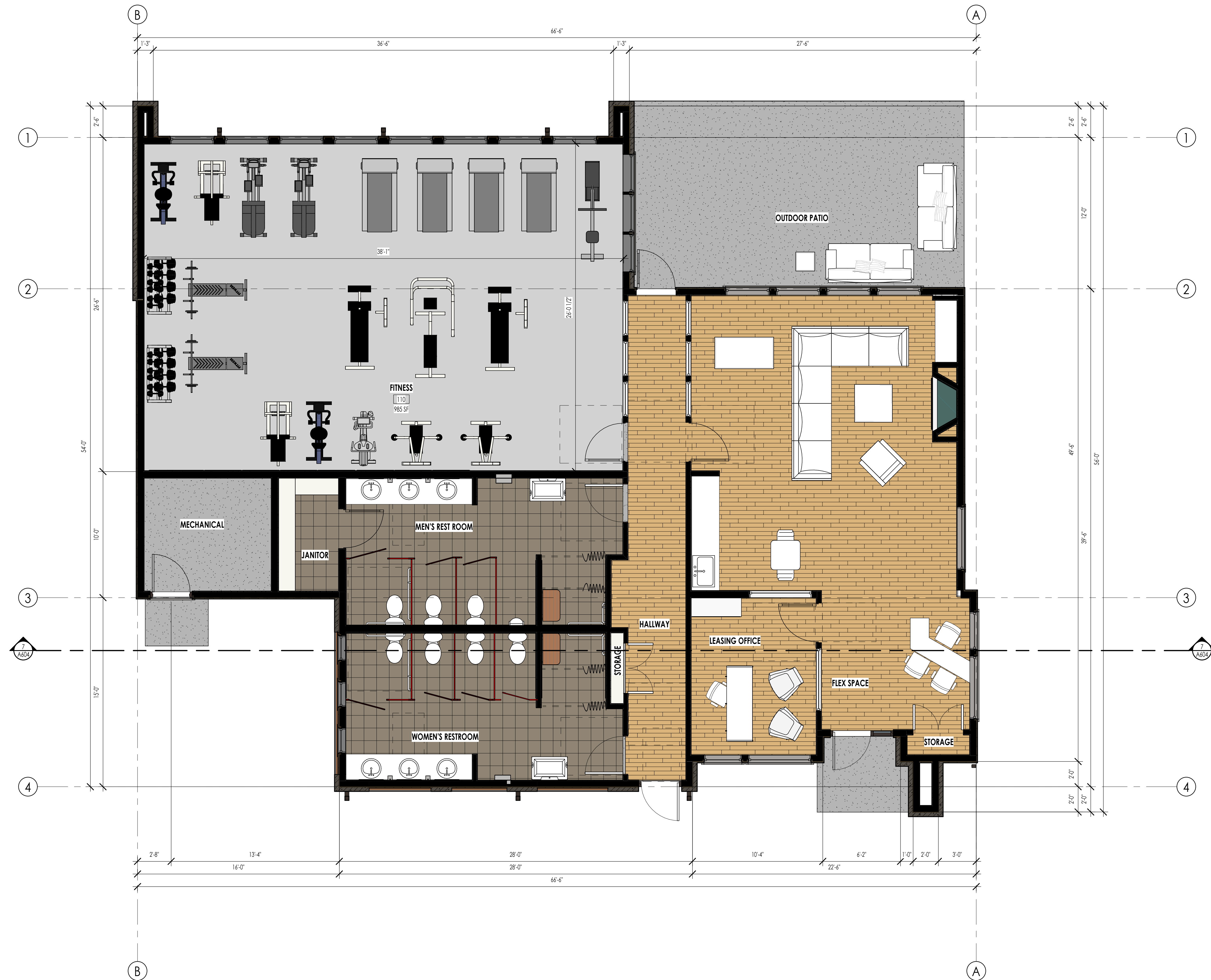
LEVEL 3 (FLAT) - PRESENTATION  
1/4" = 1'-0"

EVEREST FINISHED AREAS, FLAT	
LEVEL 1	156 SF *
LEVEL 2	634 SF *
LEVEL 3	713 SF *
TOTAL	1502 SF
TOTAL AREA, FLAT	
	1502 SF
EVEREST GARAGE AREAS, FLAT	
GARAGE	478 SF *
TOTAL	478 SF

\*AREAS PROVIDED FOR MIDDLE UNIT. FOR END UNIT ADJUST AREAS AS FOLLOWS:  
GROSS AREA (FINISHED)  
LEVEL 1: + 1 SF  
LEVEL 2: + 5 SF  
LEVEL 3: + 6 SF (+ADDITIONAL 12 SF FOR GABLE DESIGN OPTION)

AREA (UNFINISHED)  
GARAGE: + 4 SF





GROSS AREA (FINISHED)	
LEVEL	FINISHED
CLUBHOUSE AREA	2773 SF
OUTDOOR LOUNGE AREA	395 SF
TOTAL	3168 SF



GENERAL BUILDINGS MATERIALS

SWATCH:



DESCRIPTION: LAP SIDING LAP SIDING STONE FIBER CEMENT SIDING WINDOWS/ DOORS FRONT DOOR GARAGE DOOR TRIM/FASCIA/S OFFIT

MANUFACTURER: TBD TBD DUTCH QUALIY TBD ANDERSON WINDOWS OR SIMILAR TBD GARAGA OR SIMILAR TBD

COLOR: "GRAYISH" (SW 6001) OR SIMILAR "GUANTLET GRAY" (SW 7019) OR SIMILAR ASHEN DRY STACK "IRON ORE" (SW 7069) OR SIMILAR "DARK BRONZE" OR SIMILAR SHERWIN WILLIAMS "DOVETAIL" (SW 7018) OR SIMILAR "TERRASTONE" OR SIMILAR "DARK BRONZE" OR SIMILAR

HIGHLIGHT COLORS

SWATCH:



DESCRIPTION: ROOFING -SHINGLES RAILINGS GARAGE DOOR FORMED METAL PANEL OR JAMES HARDIE WOODTONE F.C. BOARD & BATTEN F.C. BOARD & BATTEN F.C. BOARD & BATTEN

MANUFACTURER: CERTIANTEED OR SIMILAR FORTRESS RAIL OR SIMILAR CHI OVERHEAD DOORS ALURRA OR EQUAL TBD TBD TBD

COLOR: "MOIRE BLACK" OR SIMILAR "BLACK" OR SIMILAR "BRONZE" OR SIMILAR RUSTIC SERIES "SUMMER WHEAT" (OSI#245) OR SIMILAR "COUNTRYLANE RED " OR SIMILAR "TORTUGA" OR SIMILAR "EVENING BLUE " OR SIMILAR



The designs shown and described herein including all technical drawings, graphic representation & models thereof, are the copyrighted work of Think Architecture, Inc. and & cannot be copied, duplicated, or commercially exploited in whole or in part without the sole and express written permission from Think Architecture, Inc.

DAI-MOTION TOWNHOMES DESIGN PACKAGE

TAYLORSVILLE, UTAH

COLOR / MATERIAL BOARD

D501.

12 NOV 2025