

Enrollment Comparisons – Projections Vs. Actuals

USBE Board Meeting
November 6, 2025

Common Data Committee (CDC)



GOVERNOR'S OFFICE OF
Planning & Budget



Oct. 1 Counts - Projections Vs. Actuals			
Student Count	Districts	Charters	Total
Oct. 1 2024 Enrollments (Actuals)	586,962	81,855	668,817
Oct. 1 2025 Enrollments (CDC Projections)	577,511	83,492	661,003
Projected Change (Students)	(9,451)	1,637	(7,814)
Projected Change (%)	-1.61%	2.00%	-1.17%
Oct. 1 2025 Enrollments (Actuals)	572,007	85,268	657,275
Actual Change (Students)	(14,955)	3,413	(11,542)
Actual Change (%)	-2.55%	4.17%	-1.73%

Oct. 1 Counts - Projections Vs. Actuals

Student Count	Districts	Charters	Total
Oct. 1 2025 Enrollments (Actuals)	572,007	85,268	657,275
Oct. 1 2026 Enrollments (CDC Projections)	554,992	88,681	643,673
Projected Change (Students)	(17,015)	3,413	(13,602)
Projected Change (%)	-2.97%	4.00%	-2.07%

FY25 ADM - Projections Vs. Actuals			
Student Count	Districts	Charters	Total
FY24 K-12 ADM	574,996.4	77,946.1	652,942.4
FY25 K-12 ADM (Projections)	568,258.9	79,821.2	648,080.2
Projected Change (ADM)	(6,737.4)	1,875.1	(4,862.3)
Projected Change (%)	-1.17%	2.41%	-0.74%
FY25 K-12 ADM (Actuals)	565,535.0	80,147.1	645,704.4
Actual Change (ADM)	(9,461.3)	2,201.1	(7,238.0)
Actual Change (%)	-1.65%	2.82%	-1.11%

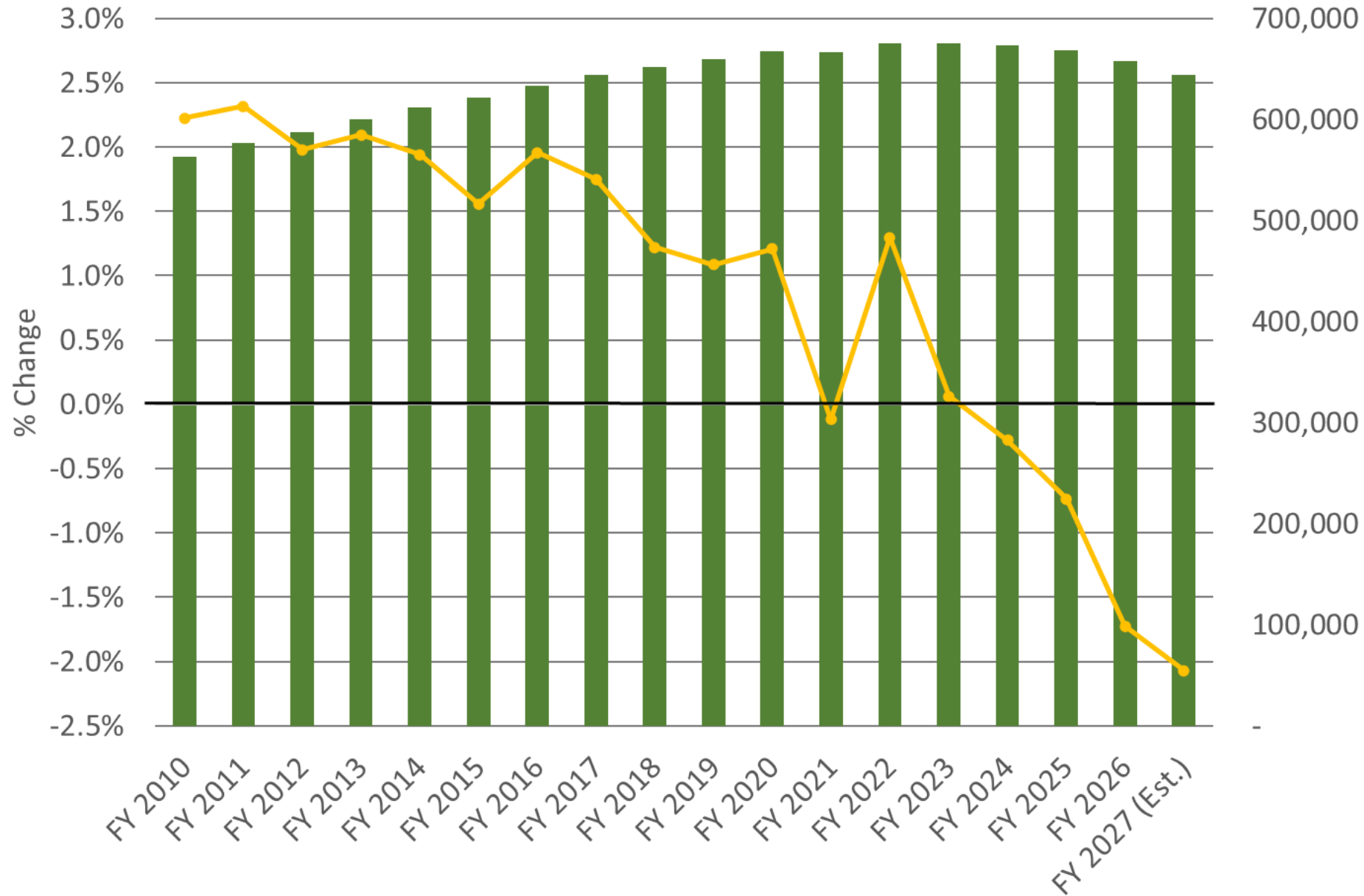
Full-Day Kindergarten - Projections Vs. Actuals

Kindergarten Counts	Districts	Charters	Total
Oct. 1 2024 Enrollments (Actuals)	34,221	6,415	40,636
Oct. 1 2025 Enrollments (Actuals)	32,488	7,542	40,030
Change (Students)	(1,733)	1,127	(606)
Change (%)	-5.1%	17.6%	-1.5%
% of Kindergarteners	Districts	Charters	Total
Oct. 1 2024 Enrollments (Actuals)	92.1%	84.0%	90.7%
Oct. 1 2025 Enrollments (Actuals)	92.6%	89.4%	92.0%
Change (% Points)	0.5%	5.3%	1.2%

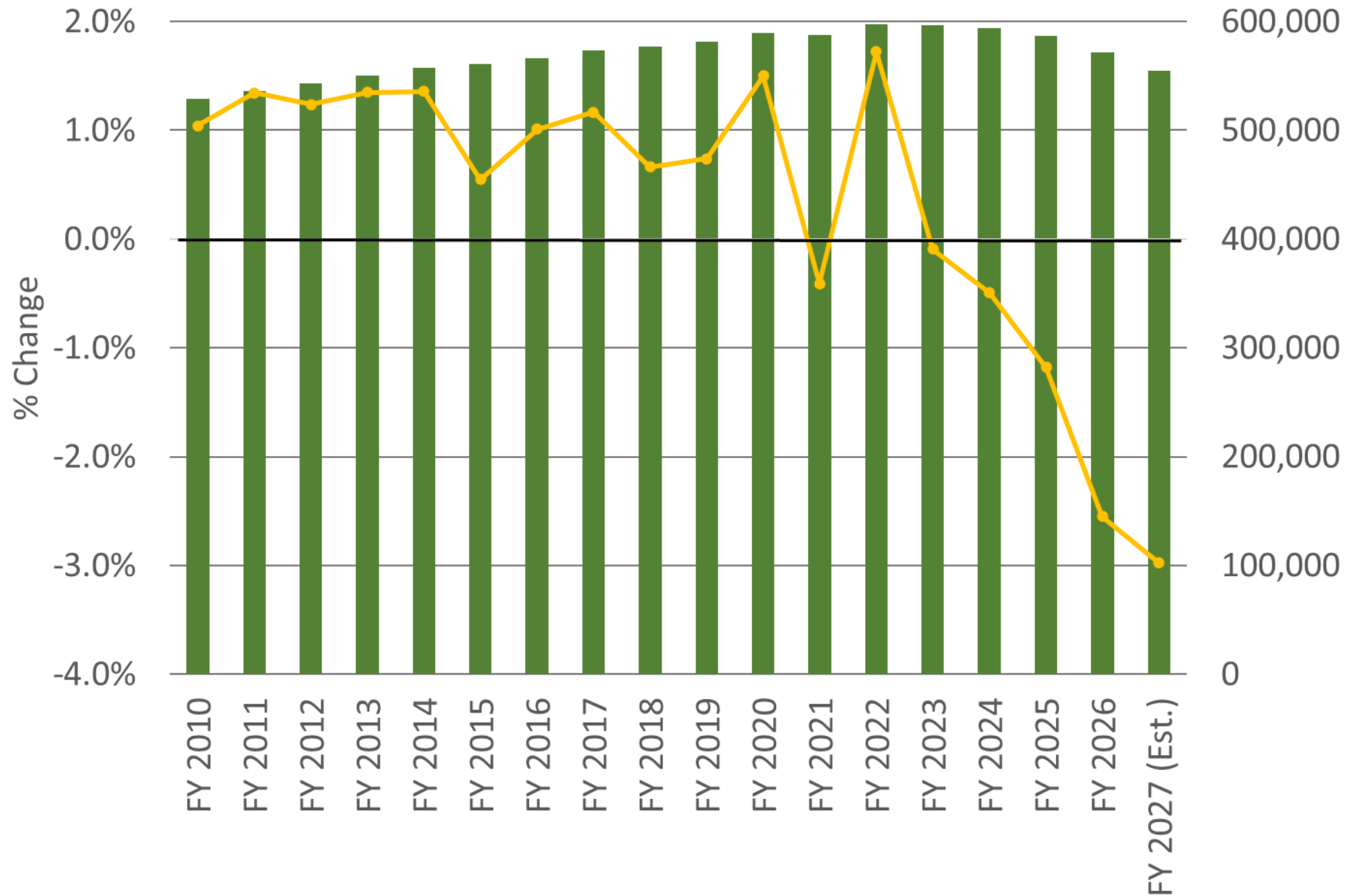
CACTUS Educator FTE - Projections Vs. Actuals

Educator FTE Counts	Districts	Charters	USDB/RESAs	Total
Oct. 15, 2024 Educator FTE (Actuals)	32,067.7	4,897.9	206.4	37,171.9
Educator FTE (Legislative Estimates)	32,067.7	4,916.1	206.4	37,190.2
Projected Change (FTE)	-	18.3	-	18.3
Projected Change (%)	0.00%	0.37%	0.00%	0.05%
Oct. 15, 2025 Educator FTE (Actuals)	31,935.9	5,034.0	213.6	37,183.4
Actual Change (FTE)	(131.8)	136.1	7.2	11.5
Actual Change (%)	-0.41%	2.78%	3.49%	0.03%

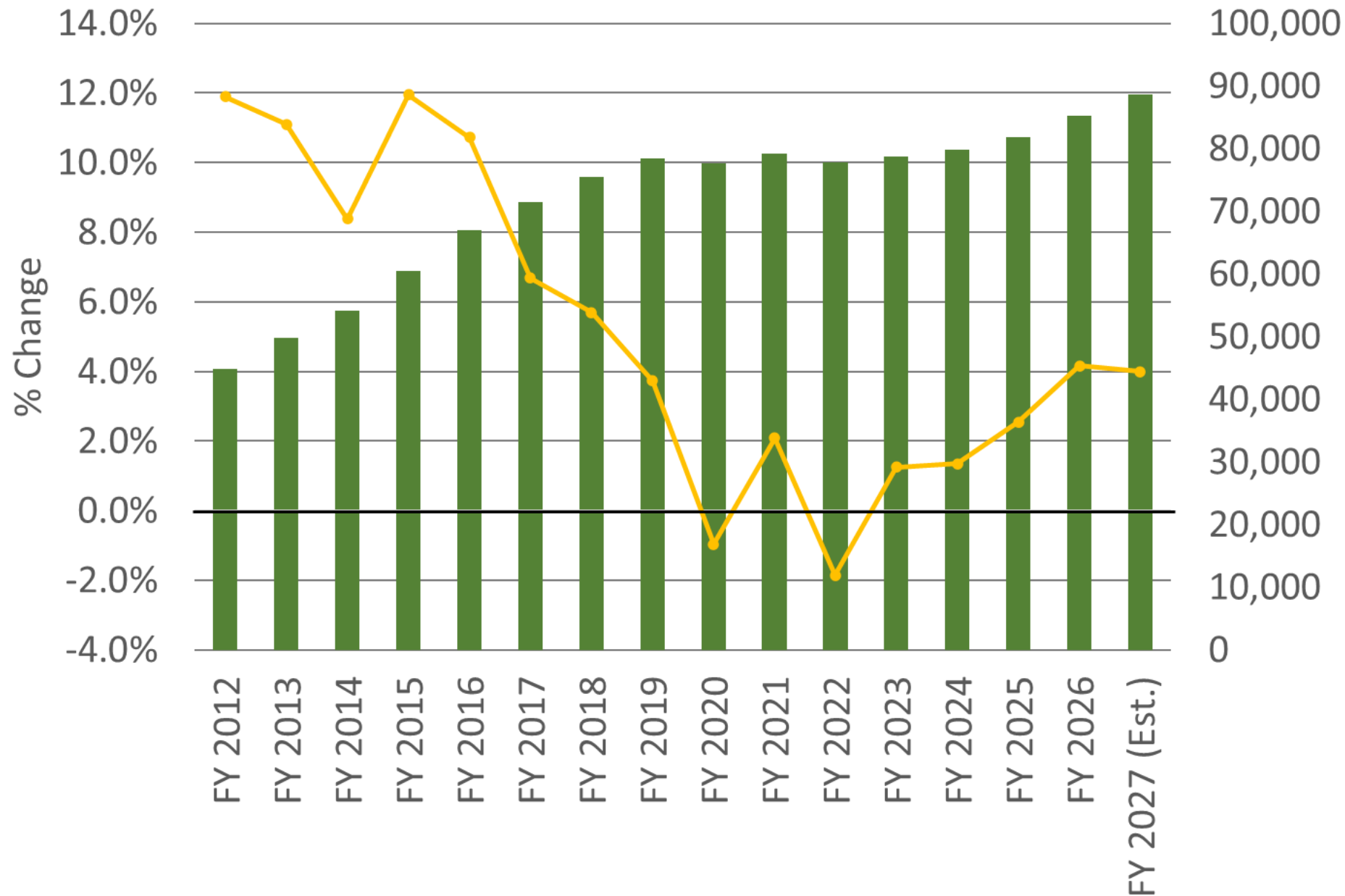
Total Oct. 1 Enrollments Over Time



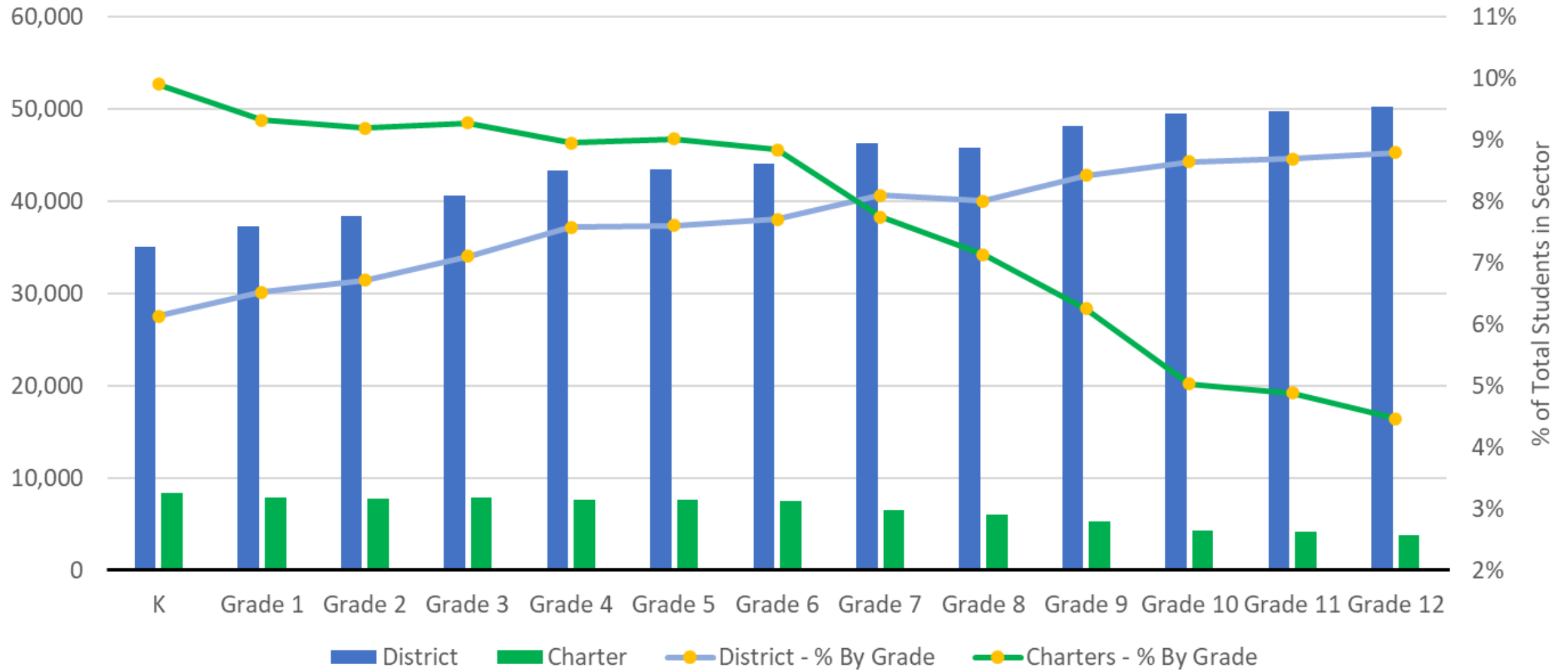
Total Oct. 1 Enrollments Over Time - School Districts



Total Oct. 1 Enrollments Over Time - Charters



Student Populations By Grade



October 1 Enrollments and Projections

		Oct 1 2023	Oct 1 2024			Oct 1 2025			Oct 1 2026 (CDC Projections)		
	LEA	FY24	FY25	Change	% Change	FY26	Change	% Change	FY27	Change	% Change
	District Total	593,950	586,962	(6,988)	-1.2%	572,007	(14,955)	-2.5%			
	Charter Total	79,823	81,855	2,032	2.5%	85,268	3,413	4.2%	554,992	(17,015)	-3.0%
ID	Statewide Total	673,773	668,817	(4,956)	-0.7%	657,275	(11,542)	-1.7%	88,681	3,413	4.0%
1	Alpine	84,710	84,757	47	0.1%	84,215	(542)	-0.6%	643,673	(13,602)	-2.1%
2	Beaver	1,468	1,434	(34)	-2.3%	1,452	18	1.3%	82,999	(1,216)	-1.4%
3	Box Elder	12,268	12,244	(24)	-0.2%	12,087	(157)	-1.3%	1,419	(33)	-2.3%
4	Cache	19,794	19,847	53	0.3%	19,720	(127)	-0.6%	11,900	(187)	-1.5%
5	Carbon	3,178	3,186	8	0.3%	3,135	(51)	-1.6%	19,250	(470)	-2.4%
6	Daggett	177	161	(16)	-9.0%	140	(21)	-13.0%	3,094	(41)	-1.3%
7	Davis	70,703	69,602	(1,101)	-1.6%	67,466	(2,136)	-3.1%	131	(9)	-6.4%
8	Duchesne	5,143	5,104	(39)	-0.8%	4,942	(162)	-3.2%	65,305	(2,161)	-3.2%
9	Emery	2,058	1,986	(72)	-3.5%	1,907	(79)	-4.0%	4,800	(142)	-2.9%
10	Garfield	1,511	1,561	50	3.3%	1,319	(242)	-15.5%	1,826	(81)	-4.2%
11	Grand	1,397	1,371	(26)	-1.9%	1,376	5	0.4%	1,275	(44)	-3.3%
12	Granite	58,312	57,038	(1,274)	-2.2%	54,467	(2,571)	-4.5%	1,340	(36)	-2.6%
13	Iron	14,479	13,883	(596)	-4.1%	13,407	(476)	-3.4%	51,948	(2,519)	-4.6%
14	Jordan	57,436	57,083	(353)	-0.6%	55,820	(1,263)	-2.2%	12,817	(590)	-4.4%
15	Juab	2,686	2,705	19	0.7%	2,654	(51)	-1.9%	53,250	(2,570)	-4.6%
16	Kane	1,426	1,408	(18)	-1.3%	1,386	(22)	-1.6%	1,350	(36)	-2.6%
17	Millard	3,109	3,064	(45)	-1.4%	2,997	(67)	-2.2%	2,950	(47)	-1.6%

Contact Us

Winona Moss

MSP Financial Manager

winona.moss@schools.utah.gov

Dale Frost

MSP Administrator

dale.frost@schools.utah.gov

Sam Urie

School Finance Director

sam.urie@schools.utah.gov