

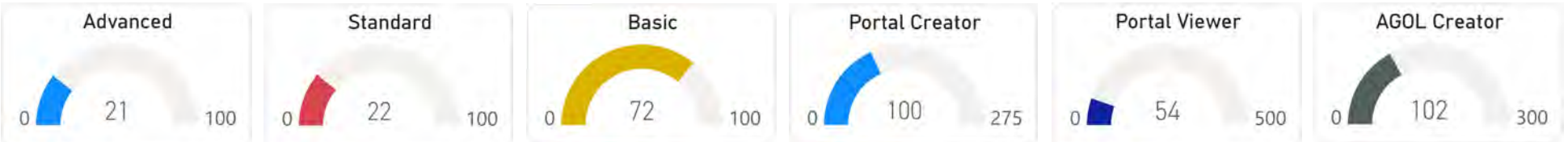
Esri Licenses

Available ArcPro: 185

Available Portal: 621

Available AGOL: 198

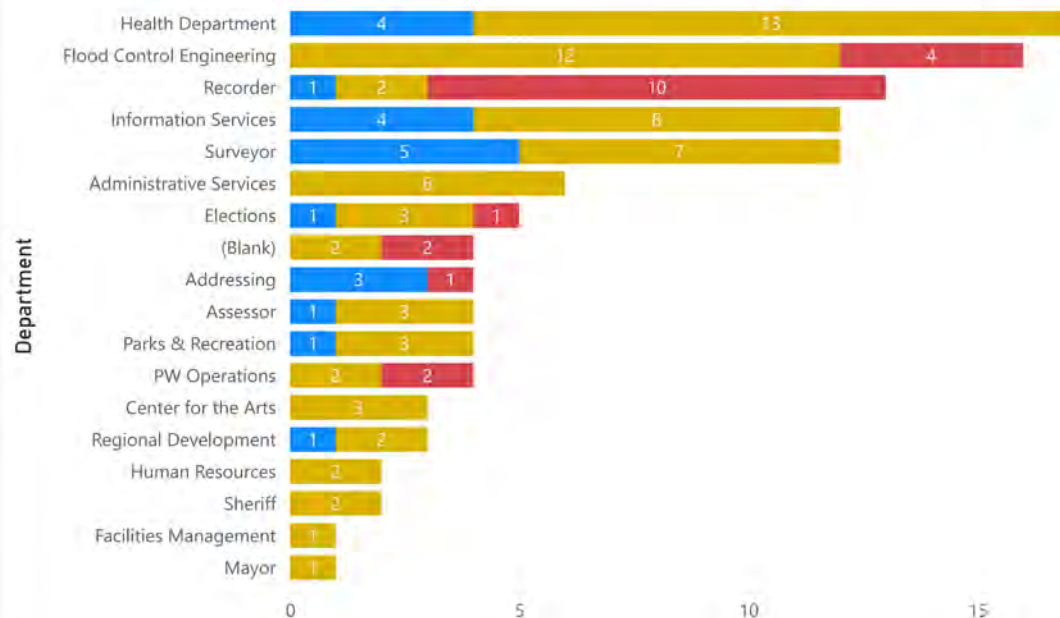
Concurrent ArcDesktop: 22



ArcGIS Pro Licenses	Portal Licenses	AGOL Licenses	ArcGIS Desktop Licenses	Extensions
---------------------	-----------------	---------------	-------------------------	------------

ArcGIS Pro Licenses

Pro Licenses ● Advanced ● Basic ● Standard



Account	Advanced	Basic	Standard
ABayon@slco.org_slco			✓
ADGeorge@slco.org_slco	✓	✓	
ADibb@slco.org_slco	✓		
AErickson@slco.org_slco			✓
AGrey@slco.org			✓
AHamilton@slco.org_slco		✓	
ALinnett@slco.org_slco		✓	
AMurphy@slco.org_slco		✓	
AOsuna@slco.org			✓
AParry@slco.org_slco		✓	
APerov@wasatchfrontwaste.org_slco			✓
ASherwood@slco.org_slco		✓	
BDuffy@slco.org_slco	✓		
BLeCheminant@slco.org_slco	✓		
CAAlvarado@slco.org_slco		✓	
CBenson@slco.org_slco		✓	
CBush@slco.org_slco		✓	
CFrancis@slco.org_slco		✓	
Total	21	72	22

Last Refresh : 9/18/2025 2:13:13 AM

Modified SWOT analysis

Brief discription of the full and modified SWOT analysis
<https://www.youtube.com/watch?v=BNcY76swk4&t=2s>
 Please create as many notes as necessary to facilitate the meeting

What is working well?

Part objectives that were defined have been accomplished. SG

IT takes care of the infrastructure. JZ

Inter personal comms

GIS chat webex space for help, questions, guidance - JR

When I'm lost I know I can reach out. - SK

1

Increasing communication and working outside of silos

Collegial meeting atmosphere that encourages discussion and welcomes friendly exchange of ideas (WB)

People attend the meetings. Great asset for new employees to meet other county GISers. (LHB)

Past user group meetings and solution sessions with the initial county data group seemed to be productive. SG

Transitioning into the new GIS system. Feature Services being registered in both Portal and AGOL. (BDuffy)

What is in our way?

Duplication of effort between agencies - TA

Being afraid to share what we're working on. (LHB)

Duplications of datasets. Customers not working together with shared resources. (Silo) -BDuffy

Improve efficiencies - JR

I find lack of engagement between everyone. This might be due to doing things for our separate departments/division. - SK

Understanding what issues departments/groups are facing with respect to GIS. Hurdles, conflict? SG

Information not registered with the SDE living inside of Portal and AGOL --BDuffy

Marking Authoritative content in AGOL and Portal -BDuffy

So many published layers when searching portals, redundancy. Hard to find Authoritative content. JZ/TA

It takes care of the infrastructure. BL

STWG Objectives and goals for the year defined. SG

Meetings have not been worth my time, until maybe the last one - JR

Meeting minutes & outcomes need to be clearly recorded and distributed; action items especially need to be clearly assigned and received by anyone willing to accept responsibility for them (WB)

Meeting agendas need to be communicated more clearly in advance so we have the opportunity to come to each meeting prepared to discuss approaching topics (WB)

What are our biggest growth or improvement opportunities?

Involve more departments. Look at the licenses dashboard to see who to include/invite. (LHB)

Need to be able to describe Who is behind increased license usages and Why the licenses are of use/value to them and the county. What is the value to the county, and why is the value to the county going up (if enterprise agreement increases)

Encouraging engagement amongst the group. Share our work with each other, ask questions, communication, etc. (LHB)

Sharing work and experience within the group. TA

Restart GIS Users Meeting and do demos (LHB)

Let's turn our cameras on in our meetings. If you're talking, your camera is on. (LHB)

Share where/who we can go to for data/information. Get more of us involved with each other. - SK

Sharing datasets TA/LHB

data catalog, owners, data sharing capability, what's authoritative - JR

the ability to create views in database as a way to share data without giving direct access. JZ

Standardizing data and creating uniform ways of exposing it to stakeholders. SG

Role based - BDuffy

Showing the beneficial uses of the technology and how it can assist employees in decision making. Educating and onboarding new users and continued assistance and support. We used to have a 1 hour technical session where people could bring help with problems.

Working through the challenges of python programming CB

Training and engagement beyond the core GIS Community - ZP



Legend:

= Fully supported

= Partial support or with limitations/workarounds

= Not supported

Desktop & Enterprise GIS Comparison

Feature/Requirement	ArcGIS Pro	QGIS	AutoDesk Map 3D	GRASS	uDig	gvSIG	MapInfo Pro	Maptitude
Custom Tools	Python/Toolbox	Python/Plugins	AutoLISP/.NET	Scripts	Java plugins	Scripting	MapBasic	Basic scripting
Scripts/Modeling	Python/ModelBuilder	Python/Modeler		Shell/Python		Limited		
Local Gov Templates	(Esri LGIM)	Custom only						
Relationship Tables	Full support	Full support		Limited				
Modeling Tools	ModelBuilder	Graphical Modeler						
Versioning (Multi-user)	(Enterprise GDB)	(PostGIS)						
Attribute Rules/Assistants	Arcade, Rules	Expressions						
File GDB Support	Native	Read-only		GDAL				
Routing	Network Analyst	Plugins						
Manual Georeferencing								
Excel/Spreadsheet Support					CSV only			
Data Joins								
Access DB	(OLE DB)	(via ODBC)						
DBF/SQL Support	(DBF, SQL, FGDB)	(DBF, PostGIS, etc.)						
COGO	(Survey grade editing)		(Survey grade editing)					
3D Analysis	(Advanced, Industry-leading)	(via plugins)	(CAD-based)	(3D terrain only)	(Minimal/none)	(Limited)	(Some 3D tools)	(Very limited)
Spatial Analysis	(Industry-leading)	(Extensive)	(Infrastructure focused)	(Advanced raster)	(Basic)	(Moderate)	(Good for vector analysis)	(Good for thematic maps)
Business Analysis	(Esri Business Analyst, dashboards)	(possible via plugins, limited)	(AEC/engineering business focus)				(Market planning)	(Business GIS core strength)

Web / Cloud GIS & Visualization

Feature	Azure Maps	CARTO	Mapbox	MangoMap	Policy Map	Power BI (Maps)
Custom Tools	APIs & SDKs	SQL/JS	JS SDKs	Limited		(Power Query/DAX)
Scripts/Modeling	API only	SQL	JS			DAX logic
Local Gov Templates						
Relationship Tables		Limited				Via model
Modeling Tools						Power BI model
Versioning						
Attribute Rules/Assistants						
File GDB Support						
Routing	(Charge per each inquiry)					
Manual Georeferencing						
Excel/Spreadsheet Support	CSV only					Native
Data Joins	Via API					
Access DB						Indirect
DBF/SQL Support	SQL APIs	SQL DBs	via tilesets			Limited SQL connectors
COGO						
3D Analysis	(3D visualization)	(2.5D only)	(3D WebGL maps)			(via custom visuals)
Spatial Analysis	(Limited analytics)	(GeoSQL, spatial stats)	(Minimal built-in)	(Basic only)	(Pre-packaged maps)	(Basic filters/spatial joins)
Business Analysis	(integration with Microsoft stack)	(location intelligence)	(used in dashboards, apps)	(Web dashboards)		(Business dashboards, great UX)

Quick Highlights by Category

Requirement	Best Tools
Full Local Government Support	ArcGIS Pro
Open-source	QGIS
Web-Based Mapping	ArcGIS Pro, CARTO, Mapbox, Power BI
Custom Scripting/Tools	ArcGIS Pro, QGIS, Mapbox, CARTO
Routing	ArcGIS Pro, Azure Maps, Maptitude
File GDB Compatibility	ArcGIS Pro, QGIS (read-only)
Access/DBF/SQL Support	ArcGIS Pro, QGIS, MapInfo Pro
Manual Georeferencing	ArcGIS Pro, QGIS, GRASS GIS
3D Analysis	ArcGIS Pro
Spatial Analysis	ArcGIS Pro
Business Analysis	ArcGIS Pro

Notes:

ArcGIS Pro is the only platform that supports **all** of these workflows natively — including **COGO**, **versioning**, **attribute rules**, and **Esri's Local Government templates (LGIM)**.

QGIS is very strong overall and supports most workflows with **plugins**, though it lacks Esri-style **attribute rules**, **versioning**, and **COGO**.

GRASS, gvSIG, MapInfo Pro, AutoDesk Map 3D all support many components but fall short in one or more critical areas (like COGO or templates).

Web-based tools (CARTO, Mapbox, MangoMap, Azure Maps, PolicyMap, Power BI) are **not suitable** for traditional county GIS workflows — they're designed for **visualization**, **dashboards**, and **data delivery**, not **survey-grade editing** or **local government workflows**.

2025 Esri User Conference:

an IT Perspective

Teddy Arnold

9.18.2025

Big Picture

—

What's New

- ▶ GIS is more connected and intelligent
- ▶ AI and automation built into ArcGIS tools
- ▶ ArcGIS Integrations - Microsoft and More
- ▶ Real-Time GIS and Digital Twins
- ▶ Enterprise Server 12.0 is coming

AI in ArcGIS – AI Framework

GeoAI

- Deep learning models

AI Assistants

- Improving access and efficiency

AI Agents

- Automated workflows

AI Examples from Esri UC

- ▶ Chattanooga: AI detecting road damage
- ▶ Survey123: photo → auto-filled hazard form
- ▶ Symbology: Using language prompts
- ▶ [COGO Reader for Parcel Fabrics in ArcGIS Pro](#)
- ▶ [Using GeoAI to Inventory ADA Curb Ramps](#)

Integrations with Microsoft 365



Excel → add maps and analyze spatial data



PowerAutomate → data management,
attachments handling



SharePoint → dynamic mapping with lists, link
document libraries



Why it matters: maps where you already work

Real-Time GIS

- ▶ Velocity
- ▶ Digital Twins and Indoor GIS
- ▶ predictive maintenance, simulation, and scenario planning

Enterprise 12.0 Announced

- ▶ Web AppBuilder, Configurable Apps, and Map Viewer Classic are officially gone
- ▶ New Support Lifecycle
- ▶ Currently upgrading from 10.9.1 to 11.5
- ▶ 11.5 general availability until June 2027 and extended support June 2029

ArcGIS Online vs Enterprise

- ▶ quick, easy, anywhere
 - ▶ SaaS solution, Esri Managed
 - ▶ Upgrades quarterly
 - ▶ Best for less critical datasets or less regulated environments designed to be shared
- ▶ On Premises
 - ▶ secure, internal systems managed by IT
 - ▶ Releases are behind ArcGIS Online
- ▶ Hybrid approach: best of both

Takeaways

- ▶ AI trends are continuing
- ▶ Indoors and Digital Twinning in real world applications
- ▶ Stronger Microsoft 365 integrations

Additional Information

- ▶ [ArcGIS Trust Center | Documentation](#)
- ▶ [Update to ArcGIS Enterprise Product Lifecycle](#)
- ▶ [Automate Road Surface Investigation Using Deep Learning](#)
- ▶ [Integrate your SharePoint documents with ArcGIS](#)
- ▶ [Dive into ArcGIS Enterprise 11.5 before you delve into 12](#)