

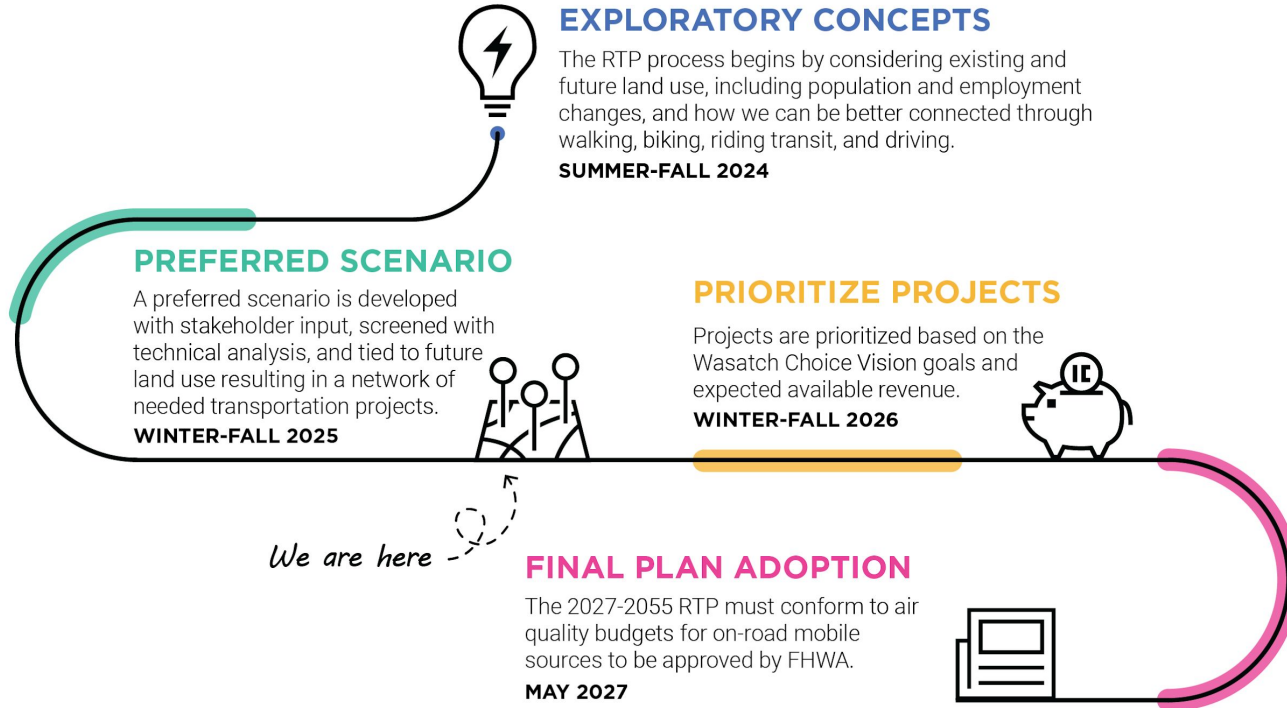


# 2027-2055 RTP: Phasing Criteria Initial Input

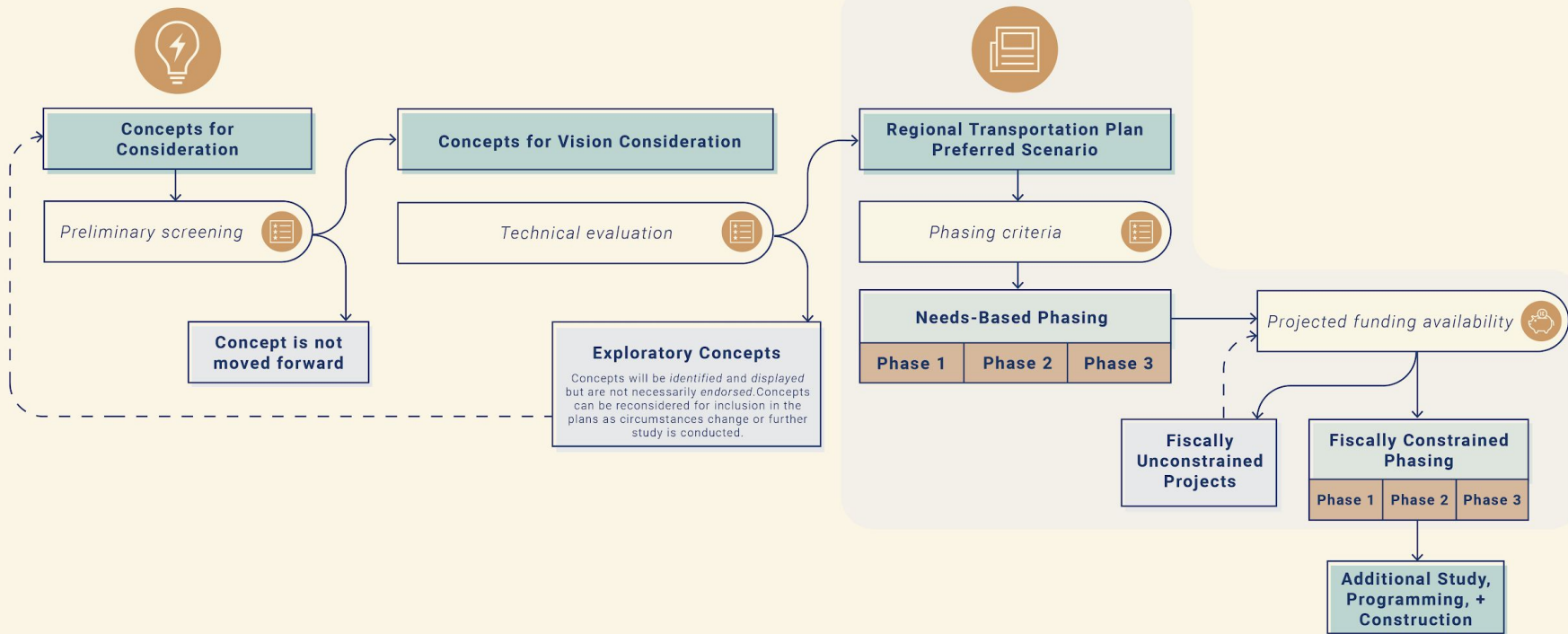
Active Transportation Committee  
October 14, 2025



# RTP Planning Process

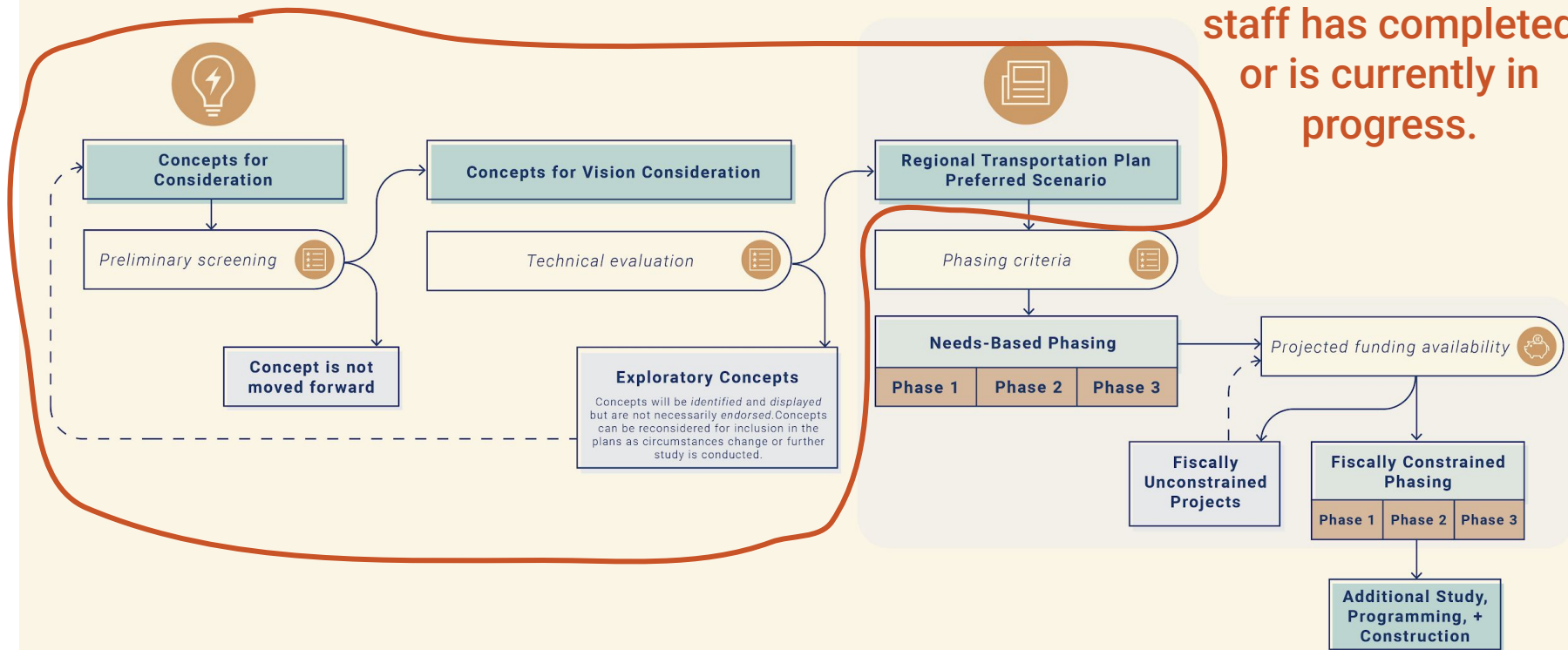


# EXPLORING REGIONAL TRANSPORTATION CONCEPTS



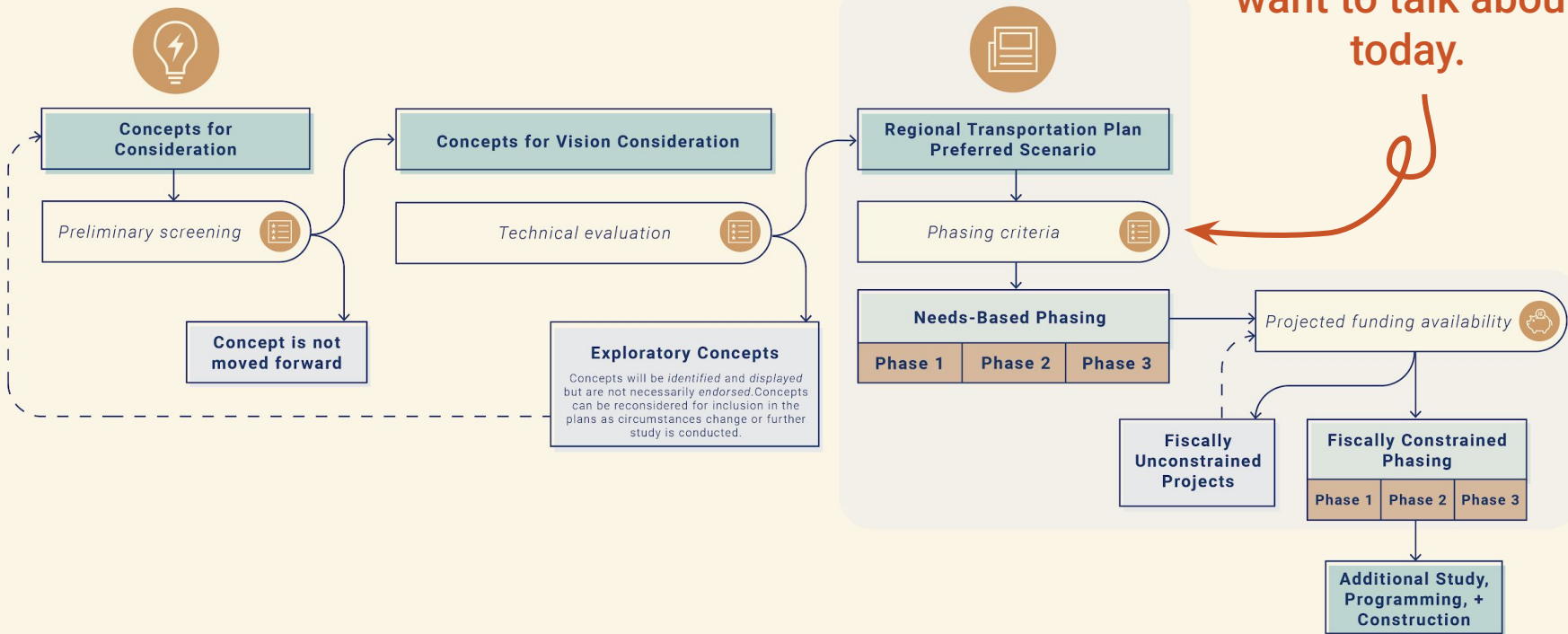
## EXPLORING REGIONAL TRANSPORTATION CONCEPTS

This is the work staff has completed or is currently in progress.



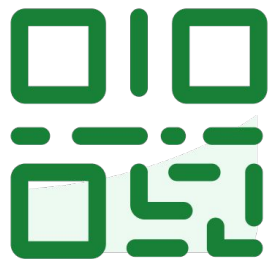
# EXPLORING REGIONAL TRANSPORTATION CONCEPTS

This is what we want to talk about today.



# 2023 RTP Phasing Criteria





Join at [slido.com](https://slido.com)  
#3261373



# Wasatch Choice Vision Goals



Livable & Healthy Communities



Clean Air



Access to Economic & Educational Opportunities



Housing Choices & Affordable Living Expenses



Manageable & Reliable Traffic Conditions



Fiscally Responsible Communities & Infrastructure



Quality Transportation Choices



Sustainable Environment



Safe, User Friendly Streets



Ample Parks & Public Spaces

# Active Transportation Phasing Criteria



## Safe, user-friendly streets

Improves safety

Addresses latent bicycle demand



## Quality transportation choices

Improves network connectivity

Improves connections to transit

Improves connections to shared mobility services



## Livable & healthy communities

Supports the Wasatch Choice Vision and revitalizes the economy

Improves health outcomes



## Access to economic & educational opportunities

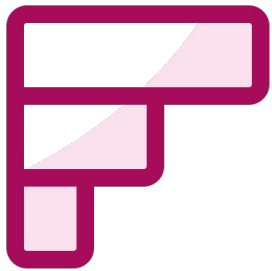
Improves access to opportunities

Improves access to opportunities in Community Focus Areas

Improves access to and within Community Focus Areas

Goals Not Being Used:





Please rank, from highest priority to lowest priority, the Wasatch Choice goals that we should consider for AT phasing criteria.



# Next Steps

- + Review comments from RGC TACs and ATC
- + Internal review of state, local, and federal funding programming evaluation criteria
- + Outreach to UDOT and UTA
- + Bring back a recommendation to the RGC TACs in December 2025
- + Present to RGC in January 2026

# Contact us!



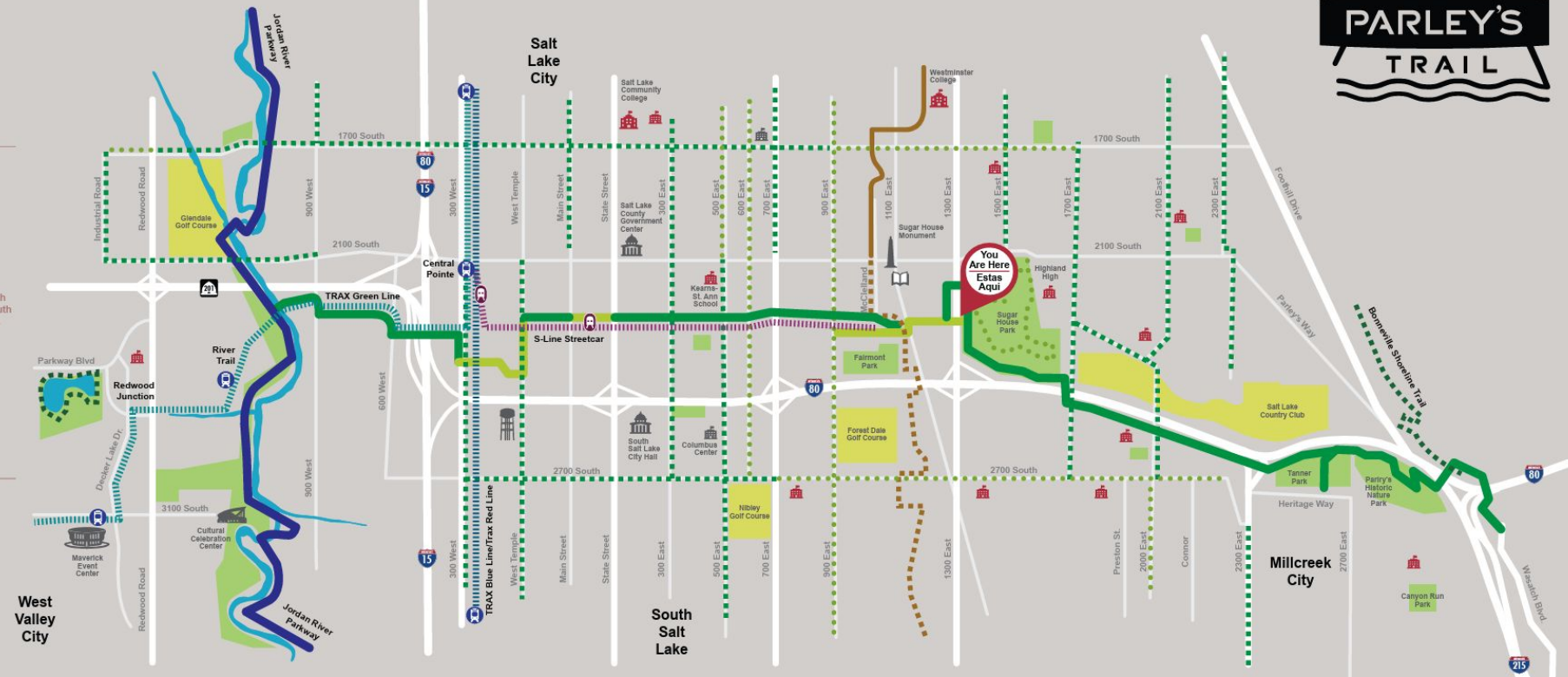
[hugh.vanwagenen@wfrc.utah.gov](mailto:hugh.vanwagenen@wfrc.utah.gov)



[longrange@wfrc.utah.gov](mailto:longrange@wfrc.utah.gov)

# PARLEY'S TRAIL

2700 South to 1700 South  
1.5 Miles



- ### Parley's Trail

  - Completed Off-Street Shared-Use Trail
  - On-Street Route
  - Jordan River Parkway Completed Off Street Shared use Trail
- ### Roads

  - Freeway System (Auto Access Only)
  - Auto Traffic Street
  - On-Street Bike Lane
  - Signed Shared Street Route
  - Existing Shared-Use Path
- ### Utah Transit Authority (UTA)

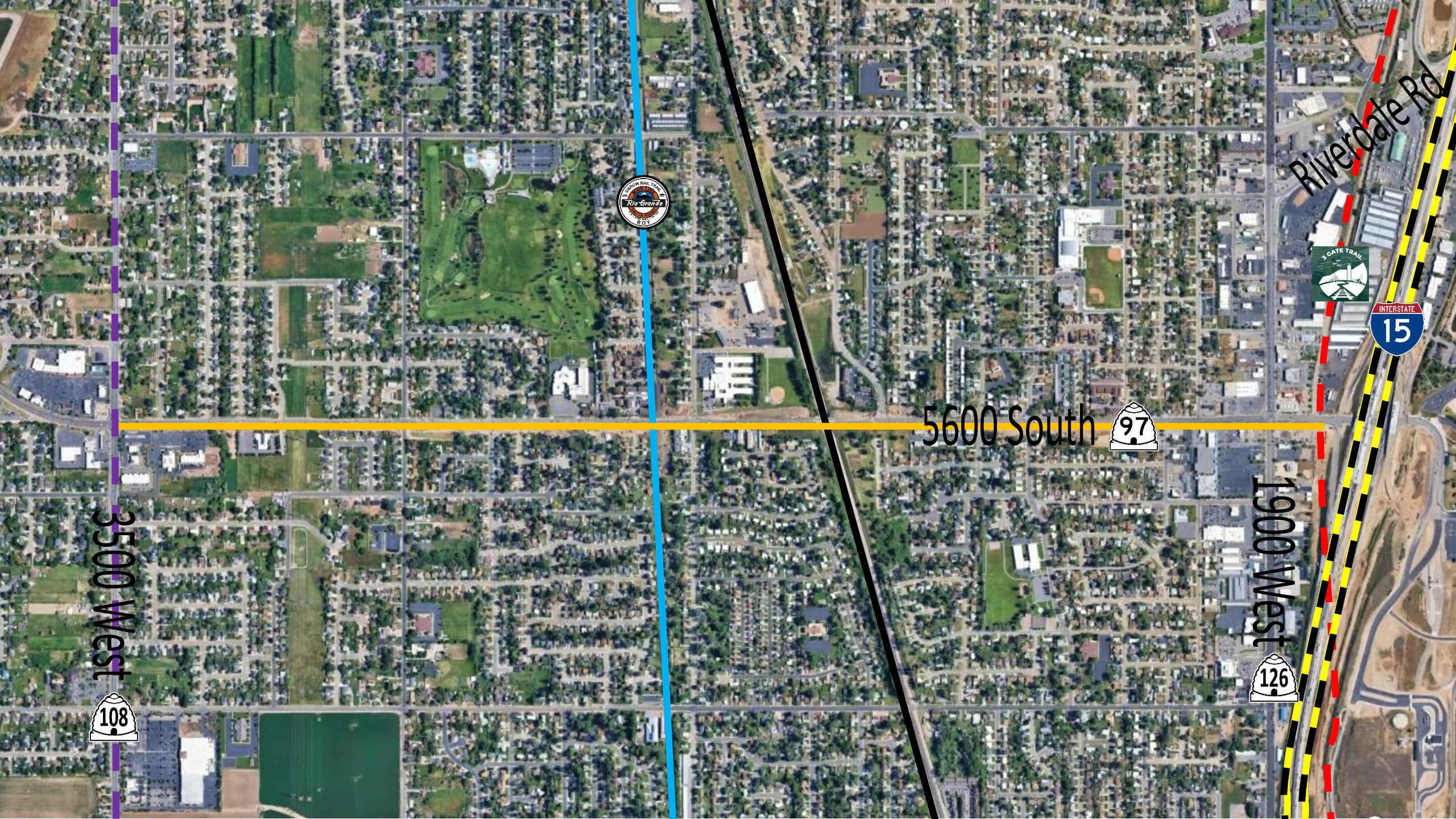
  - TRAX Red and Blue Lines
  - TRAX Green Line
  - S-Line Streetcar
  - TRAX Station
  - S-Line Station
- ### Points Of Interest

  - School
  - Public Building
  - Library
  - Parks and Open Space
  - Golf Course
  - Proposed Canal Trail
  - Existing Canal Trail



# Active Transportation





3500 West



5600 South



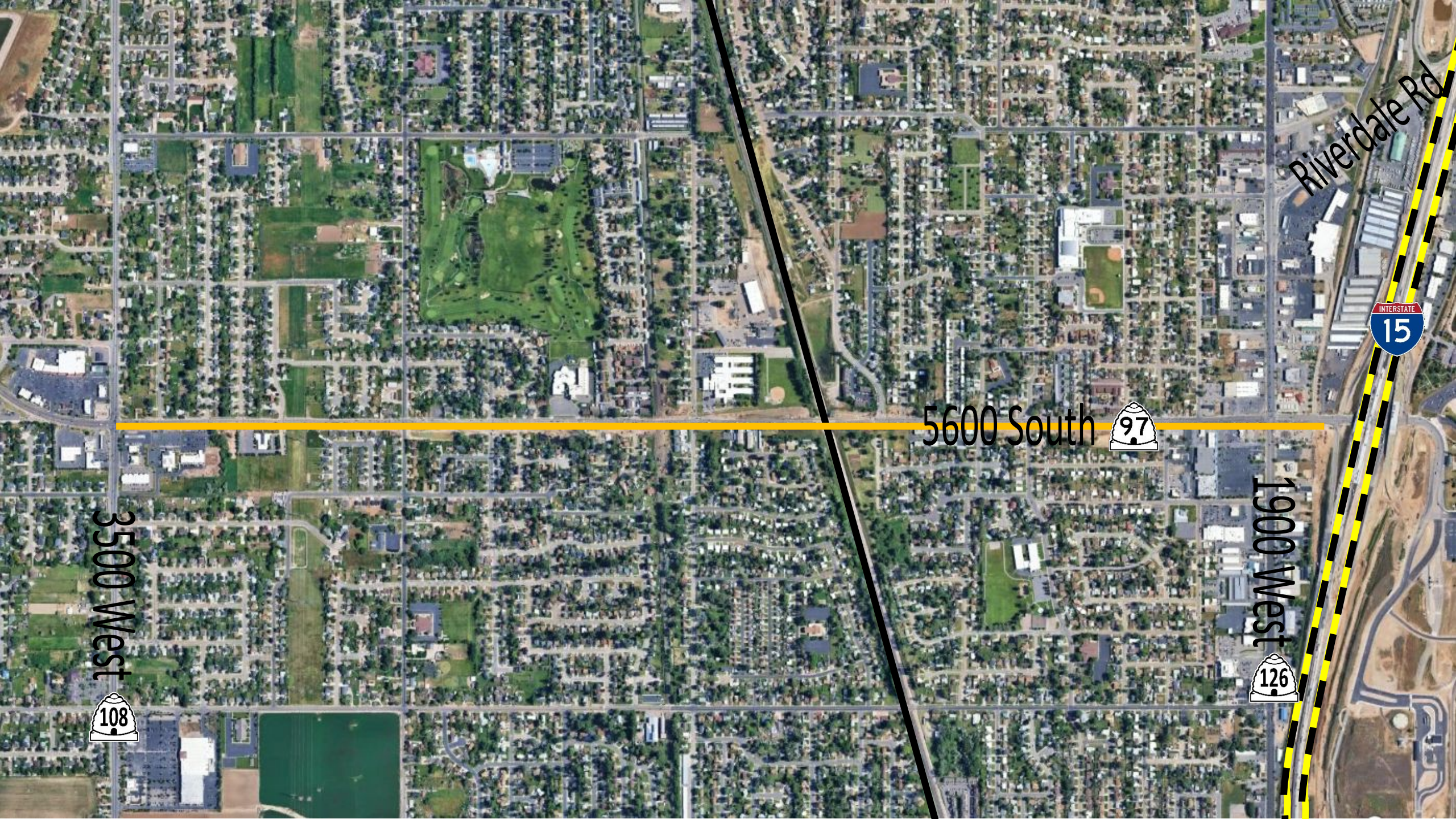
1900 West



Riverdale Rd







Riverdale Rd



1900 West



5600 South



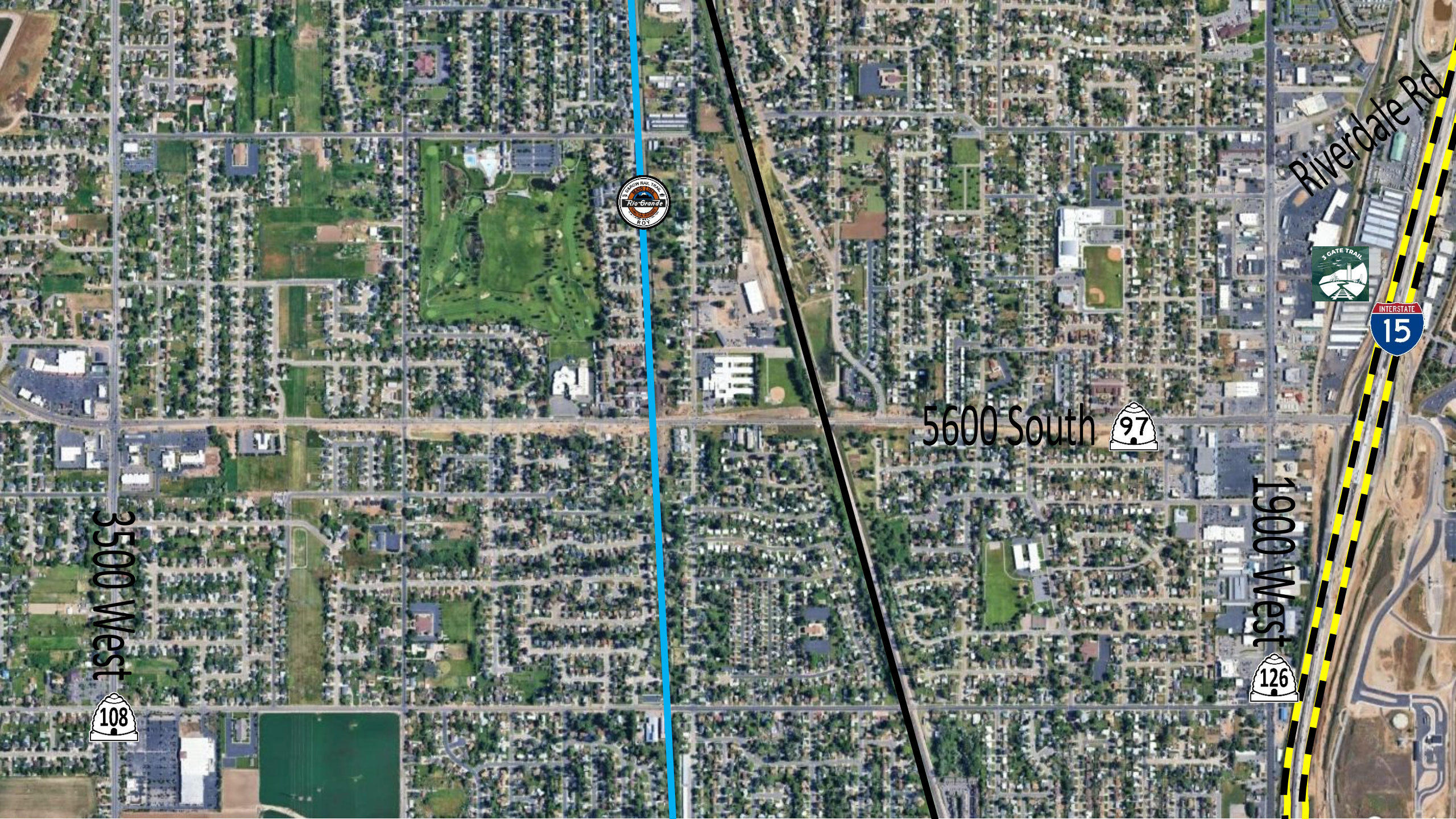
3500 West











Riverdate Rd



5600 South 

1900 West 

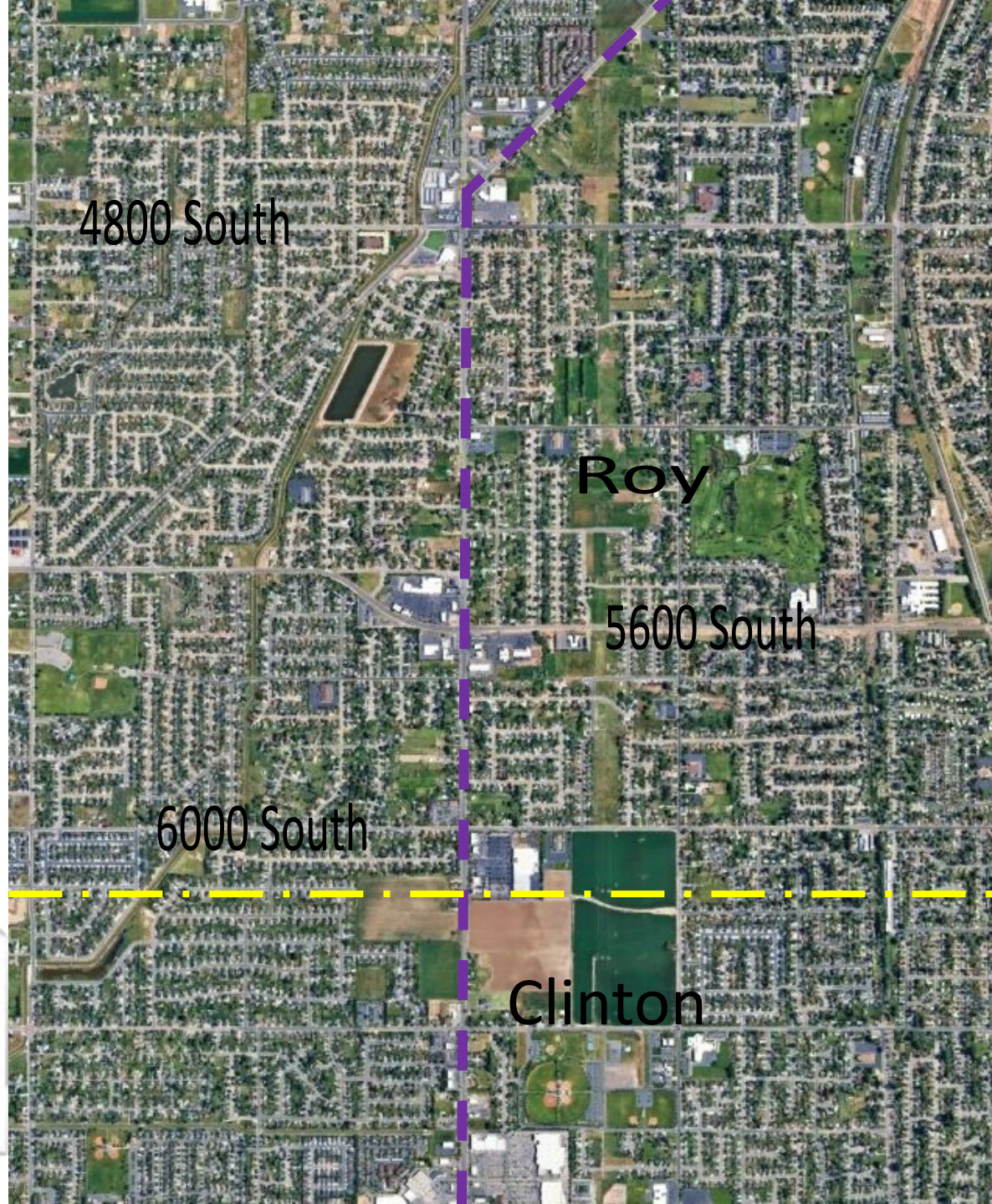
3500 West 

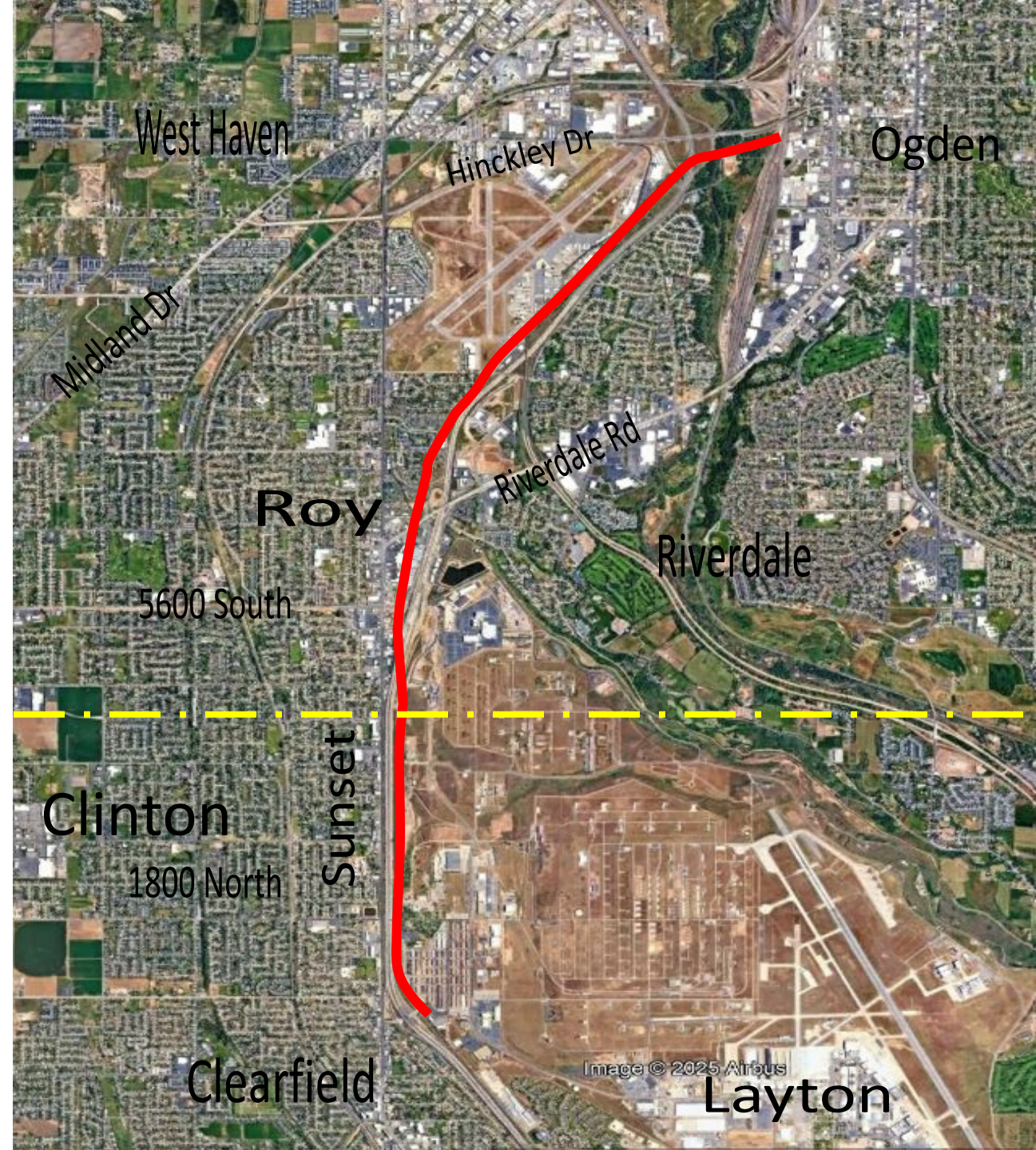






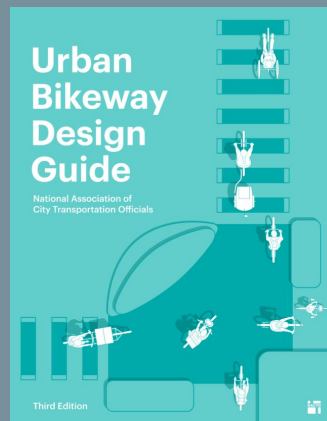








UTAH  
**TRAIL  
NETWORK**  
A UDOT PROGRAM



**MAG**  
Expert Resources. Enriching Lives.

 **Utah Bikeways** bikeways.utah.gov



**TRANSPORTATION  
IMPROVEMENT  
PROGRAM**



**TRANSPORTATION  
AND  
LAND USE CONNECTION**



# What should the Active Transportation Committee focus on in 2026?



# 2026

**Tuesdays, 9:15 am**

February 10

April 14

June 9

August 11

October 13

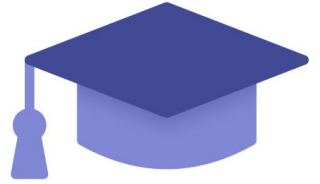




**UTAH ACTIVE TRANSPORTATION IMPLEMENTATION ACADEMY**



# 3



October 31