

# PLANNING COMMISSION MEETING

October 14, 2025  
6:30 p.m.



CITIZEN COMMENT

PUBLIC HEARING

Amendment to the  
Self Storage & Storage Shed  
Overlay Zone Map  
211 West Center Street  
Douglas White, Storage City





# Self Storage and Storage Shed Overlay Zone Amendment

## 211 West Center Street

### Zoning Map

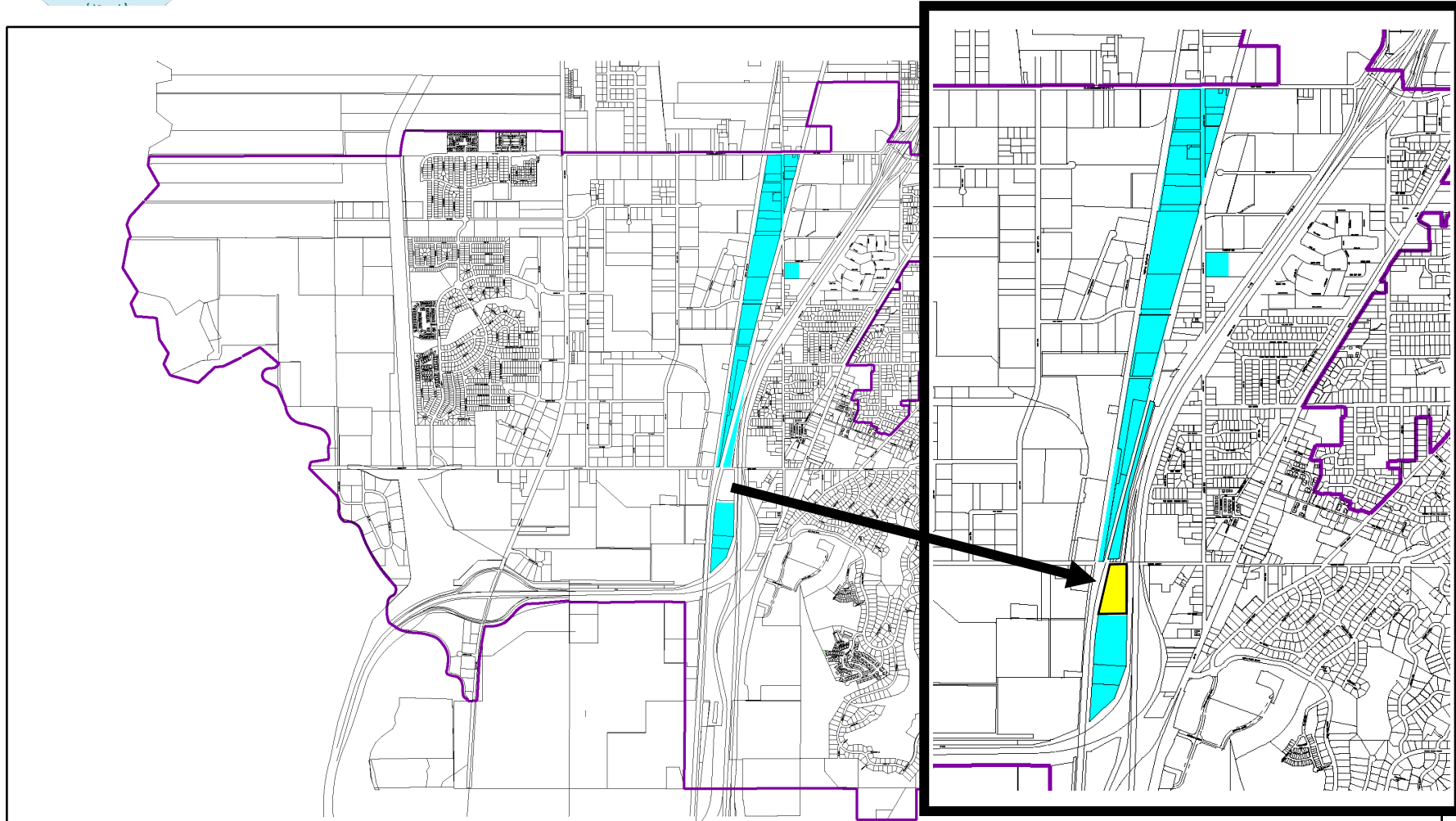




# Self Storage and Storage Shed Overlay Zone Amendment

## 211 West Center Street

### Self Storage and Storage Shed Overlay Map



REVISION	DATE	BY	DESCRIPTION	DESIGN
				PAD
				DRAWN
				PAD
				CHECKED
				PAD
				DATE
				DEC 2011
				BY
				NSL

**NORTH SALT LAKE CITY**  
**SELF STORAGE &**  
**STORAGE SHED**  
**OVERLAY MAP**



CITY OF NORTH SALT LAKE  
10 West Center Street  
North Salt Lake, Utah 84054  
801.335-8700

LEONARD K. ARVIE  
Mayor  
BARRY EDWARDS  
City Manager

SHEET  
OF  
PROJECT NO.





# Self Storage and Storage Shed Overlay Zone Amendment

## 211 West Center Street

### UDOT I-15 Potential ROW Impact (Oct. 2024)

I-15 ENVIRONMENTAL  
IMPACT STATEMENT  
Farmington to Salt Lake City









#### UDOT I-15 Farmington to Salt Lake City FEIS: Potential ROW Impacts October 2024

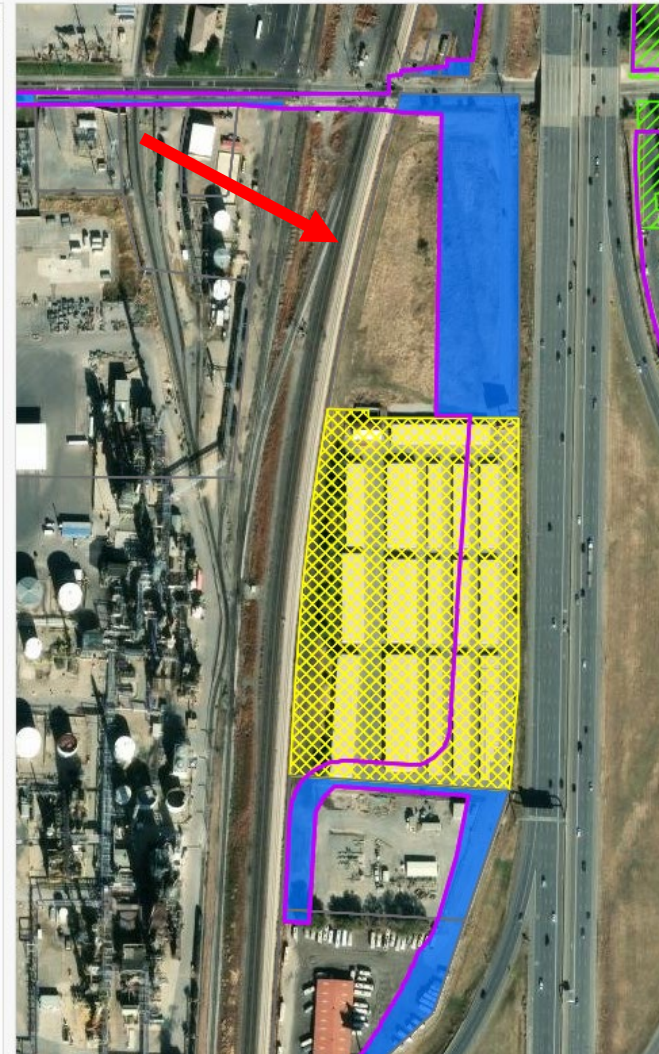
To select an alternative, please select  
from the top right segment selector.

The FEIS Selected Alternative includes  
the North - Farm. 400 W. Option and the  
South - SLC 1000 N. Northern Option.

*Disclaimer: This map shows the ROW  
impacts for the FEIS in October 2024.*

#### Legend:

-  Area of Potential Impact
-  Full Acquisition
-  Partial Acquisition
-  Relocation
-  Potential Relocation
-  Perpetual Easement
-  Temporary Construction Easement
-  Access Change



# ACTION UPDATE



MINUTES



ADJOURN