

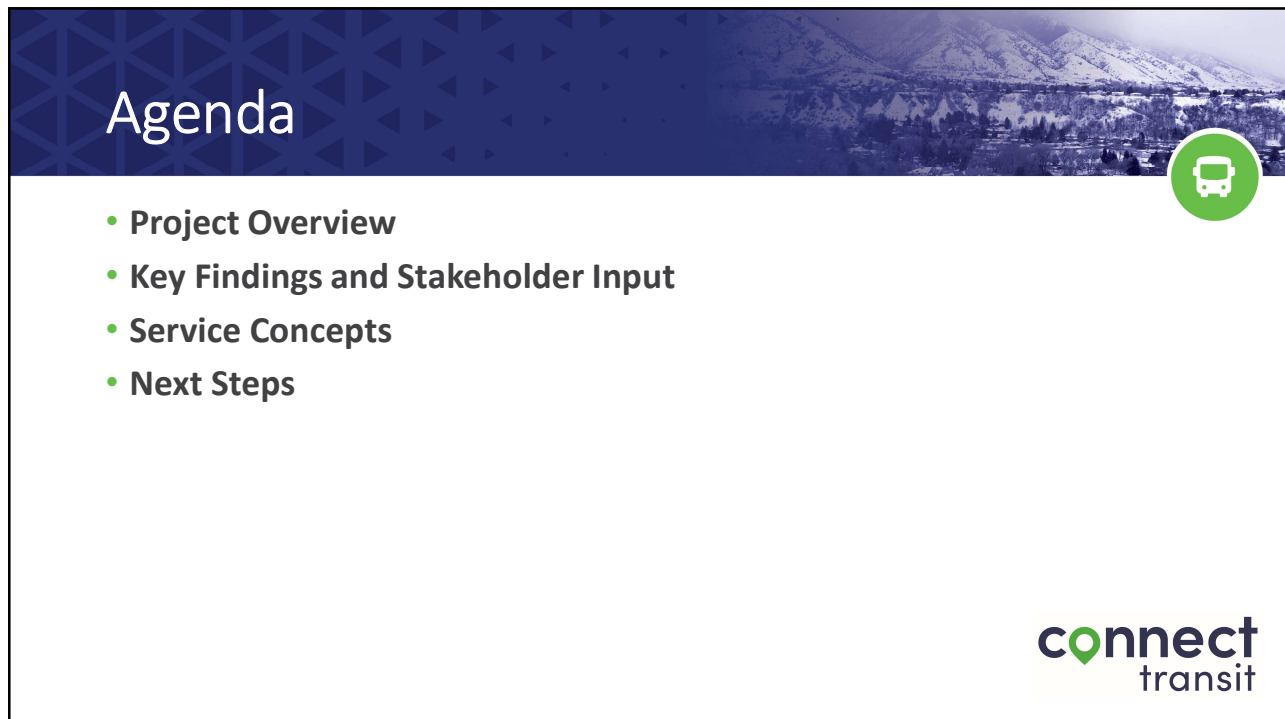


# Transit Feasibility Study Board Meeting

September 24, 2025

**connect**  
transit

1



## Agenda

- Project Overview
- Key Findings and Stakeholder Input
- Service Concepts
- Next Steps

**connect**  
transit

2

## Project Overview



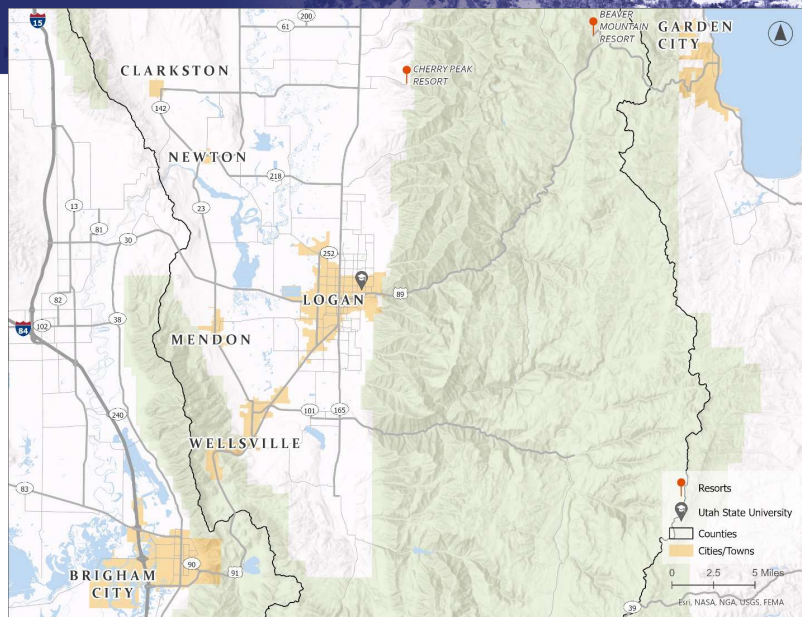
- **Purpose:** Evaluate transit demand in currently unserved areas and explore potential new transit services.
- **Phase 1:** Analyze existing conditions and trends.
- **Phase 2:** Develop and evaluate service concepts.
- **Phase 3:** Summarize potential service options.

**connect**  
transit

3

## Study Areas

- Brigham City
- Wellsville
- Clarkston
- Newton
- Mendon
- Garden City
- Beaver Mountain Lodge
- Cherry Peak Resort
- Cache County trailheads



4

# Project Schedule



**connect**  
transit

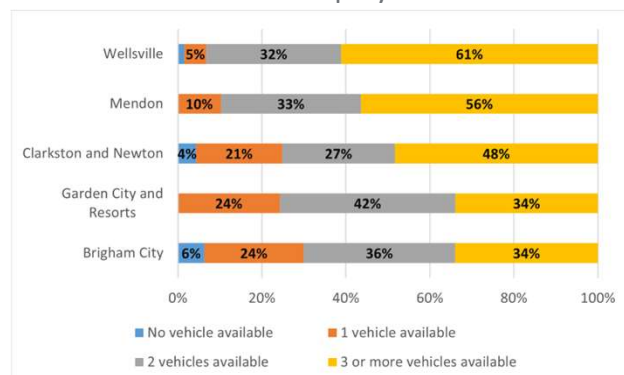
5

# Key Findings



- **Vehicle ownership is high in all study areas.**

Vehicle Ownership by Household



**connect**  
transit

6

## Key Findings

- Vehicle ownership is high in all study areas.
- **Limited access to basic needs in outlying areas.**



7

## Key Findings

- Vehicle ownership is high in all study areas.
- Limited access to basic needs in outlying areas.
- **Significant number of commuters to/from Logan.**

Commuter Inflow/Outflow

Community	# of Residents who work in Logan	# of Workers who live in Logan
Brigham City	440	228
Wellsville	456	57
Mendon	148	22
Clarkston	71	0
Newton	81	7
Garden City	4	13

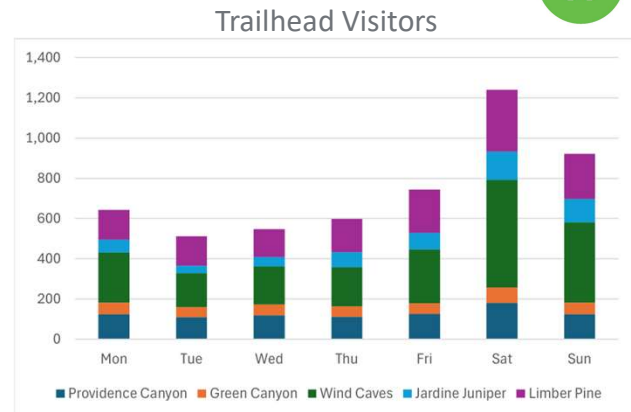


**connect**  
transit

8

## Key Findings

- Vehicle ownership is high in all study areas.
- Limited access to basic needs in outlying areas.
- Significant number of commuters to/from Logan.
- **High seasonal activity at recreation destinations.**



connect  
transit

9

## Stakeholder Input

- Transportation options between **Logan and Brigham City** remain limited, despite both being key regional hubs and activity centers.
- Garden City, trailheads, and ski resorts draw **seasonal visitors and local residents**, such as employees and USU students.
- Introducing new transit services could attract Connect Transit's main rider market: **USU students.**

connect  
transit

10



## Case Studies



### King County Metro Trailhead Direct

- Operates seasonally from Seattle
- Available on summer weekends only
- Utilizes smaller-sized vehicles



### Intercity Express Bus Collaboration

- Serving Skagit and Whatcom Counties, WA
- Jointly funded and managed by participating agencies
- Launched with support from a state grant



11

## Potential Service Options

- Five key target market segments:
  - Long-distance commuters
  - Older adults, especially Summer Citizens
  - Visitors, both local and out-of-town
  - USU students, including commuters and those in ski classes
  - Residents with limited or no vehicle access
- Three potential new service offerings:
  - Express commuter route connecting Logan and Brigham City
  - Feeder routes linking surrounding areas to Logan
  - Seasonal shuttles for summer and winter recreational activities

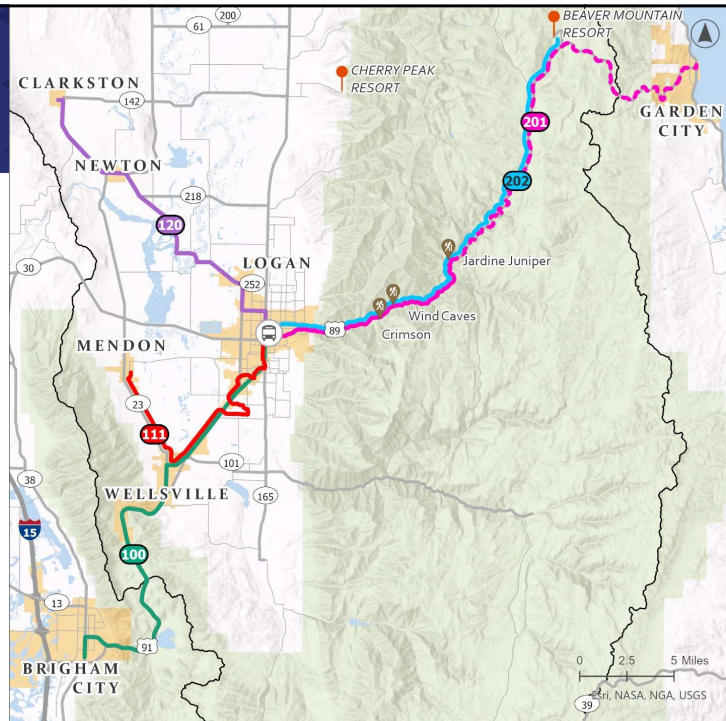


**connect**  
transit

12

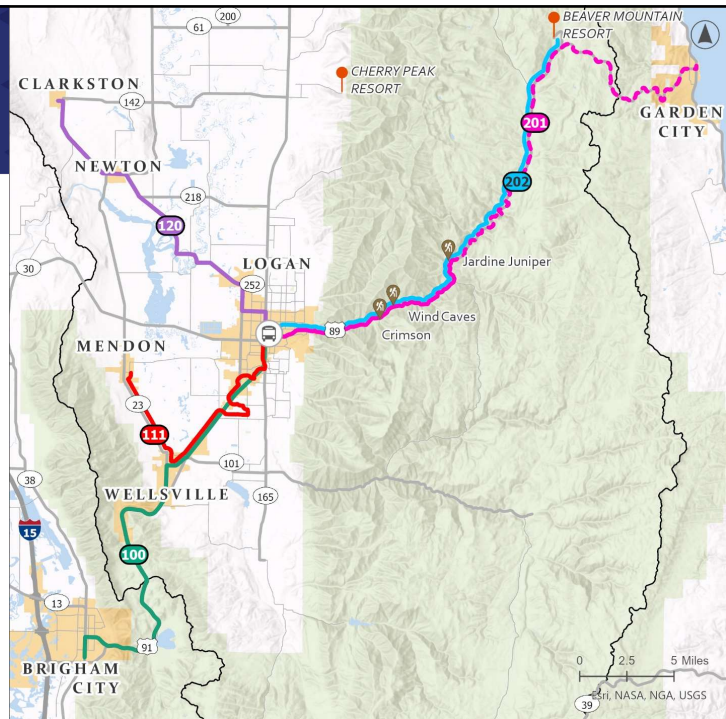
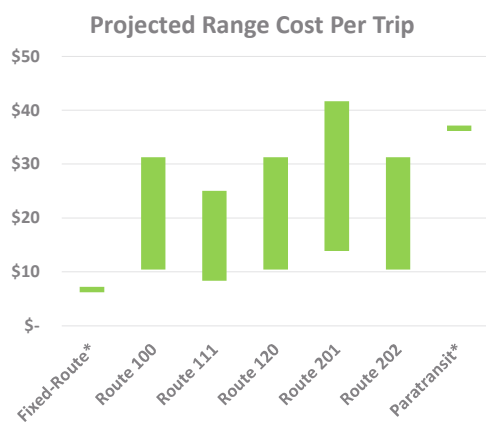
# Service Options

Route	Days of Operation	Service Span	Headways
100	Weekdays	5 am - 8 pm	45 - 90 minutes
111	Weekdays	5 am - 8 pm	60 minutes
	Saturday	11 am - 7 pm	60 minutes
120	Weekdays	5 am - 8 pm	45 - 90 minutes
	Saturday	11 am - 7 pm	90 minutes
201	Saturday	7 am - 7 pm	30 minutes
202	Friday	8 am - 8 pm	120 minutes
	Saturday	8 am - 8 pm	60 minutes



13

# Service Options



14

## Considerations



- The service options reviewed involve high costs and could impact Connect Transit's other priorities.
- They should be weighed carefully against system needs in the next transit plan update.
- Charging a fare might be considered for some options.

**connect**  
transit