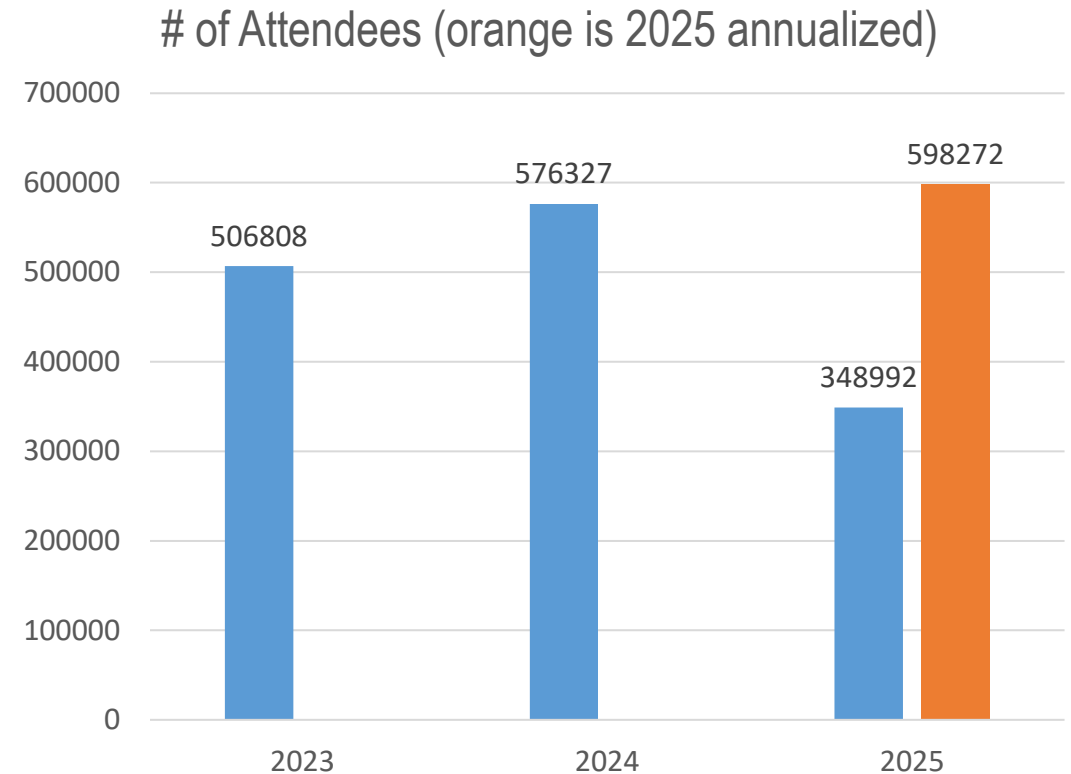
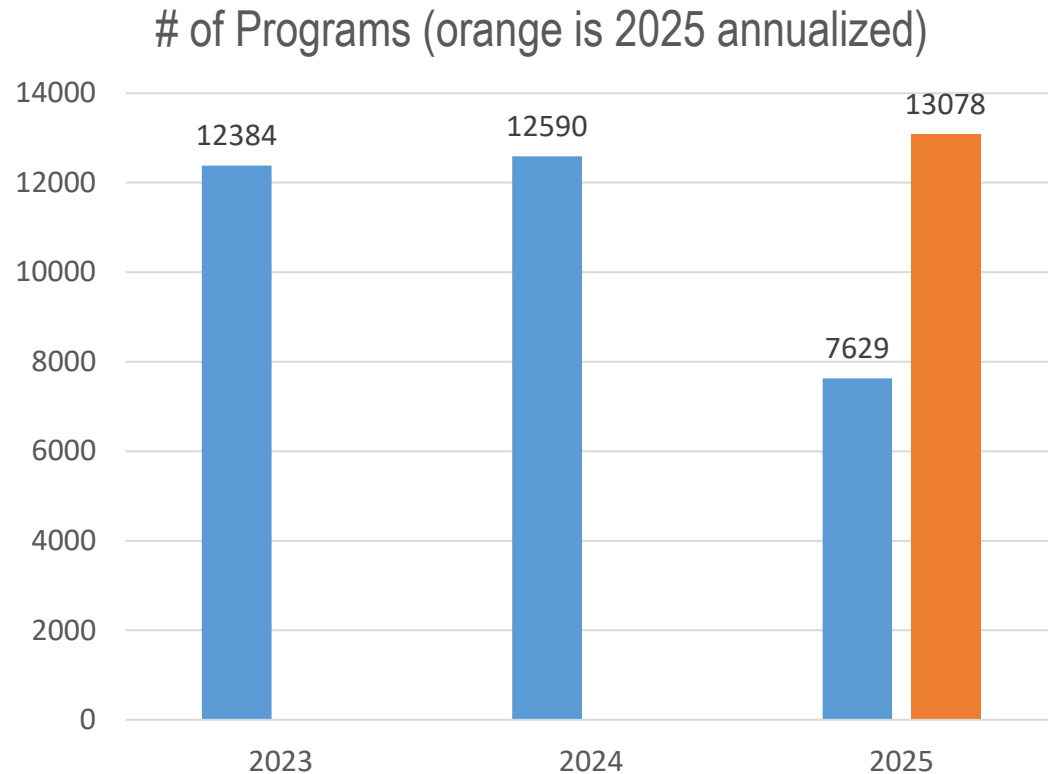


## Overview of Programming Viridian Lifelong Learning Early Learning



## Systemwide Programs and Attendance



## So far in 2025

- The library has averaged 43.6 programs each day over 175 open days
- 46 attendees per program
- 1994 attendees each day





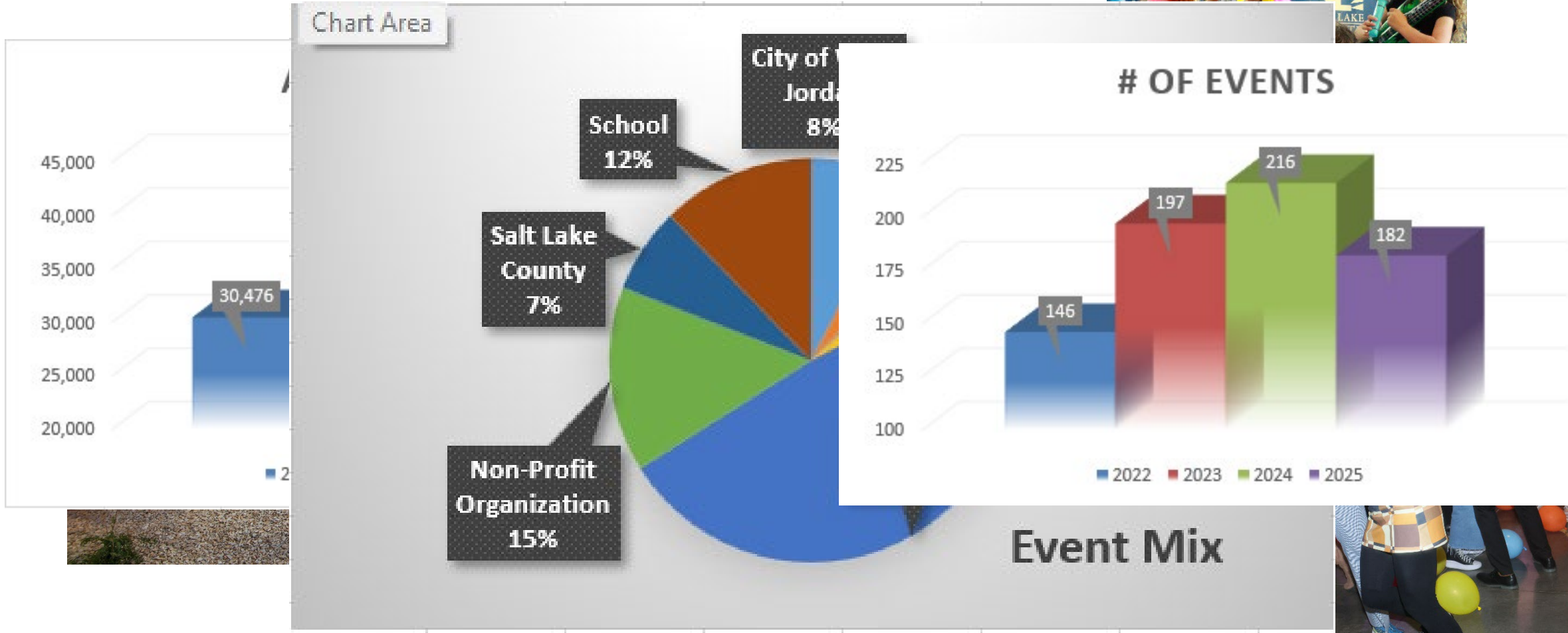
## Programming builds connection

- Attendees love the library
- Many first-time attendees aren't active library users
- Children and teens meet friends from other areas of the valley
- Dates and future partners
- Programs are educational and fun





# Viridian Event Center Community Gathering Space





- Yearlong - Loaning Event Items
- First Friday Concerts – First Friday of Every Month
- Classes - Tuesdays
  - Hobby 101
  - Rock
  - Wasatch Woolpack
  - USU relationship classes
- Adult Night Out – Quarterly
  - 2/14 – Valentine's Dance
  - 6/13 – 90's Prom
  - 10/25 – Vampire Ball
  - 12/31 – New Year's Eve Gala
- Movies
  - 4/26 - Tumbleweeds Film Festival
  - October Mondays - Halloween Movies
  - December Mondays - Christmas Movies
- 8/30 - Chalk the Walk
- 10/18 - Costume Swap - GRA
- 10/24 - Teen Halloween

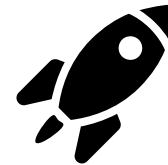


# Lifelong Learning 2025 - Initiatives



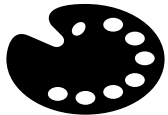
## Winter Reading:

- 7,529 participants
- 59 classes -> 2,374 students
- Month of January



## Level Up:

- Targeted 3<sup>rd</sup> Grade outreach
- Designed around Common Core
- Runs September-December



## Summer Reading:

- 47,921 participants
- Free admission to NHMU
- BOGO Tracy Aviary and REAL Salt Lake
- Bookmark Contest



## Read Together:

- Free books for visitors to the Jail
- Promotes literacy and family connection
- Criminal Justice Services – future partnership

# Lifelong Learning 2025 - Partnerships



## America 250

- 250 Anniversary of country
- Exploring programming for 2026



## Take Care Utah:

- Health Insurance Counseling
- Monthly April - October
- GRA, KEA, TYL



## Lead Poisoning Prevention

- Salt Lake County Health Dept
- Taught at summer camps
- Branch visits

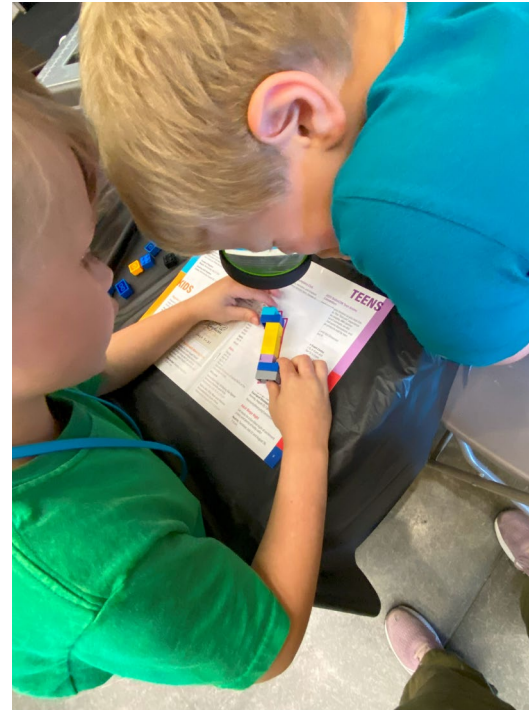


# Lifelong Learning 2025 - Programs



## O.W.L. Camp

- 1022 Students (ages 11-18)
- 7 days
- 8 partners



## Spy Camp

- 488 Students (ages 6-10)
- 6 days
- 8 partners



## ToshoCON:

- 2000 attendees
- 2 days
- Teen content



# Early Learning

at the County Library



## Early Learning Team

**Program Manager**

Susan Spicer

**Acting-in Program Manager**

Kim Welch

**Senior Librarian**

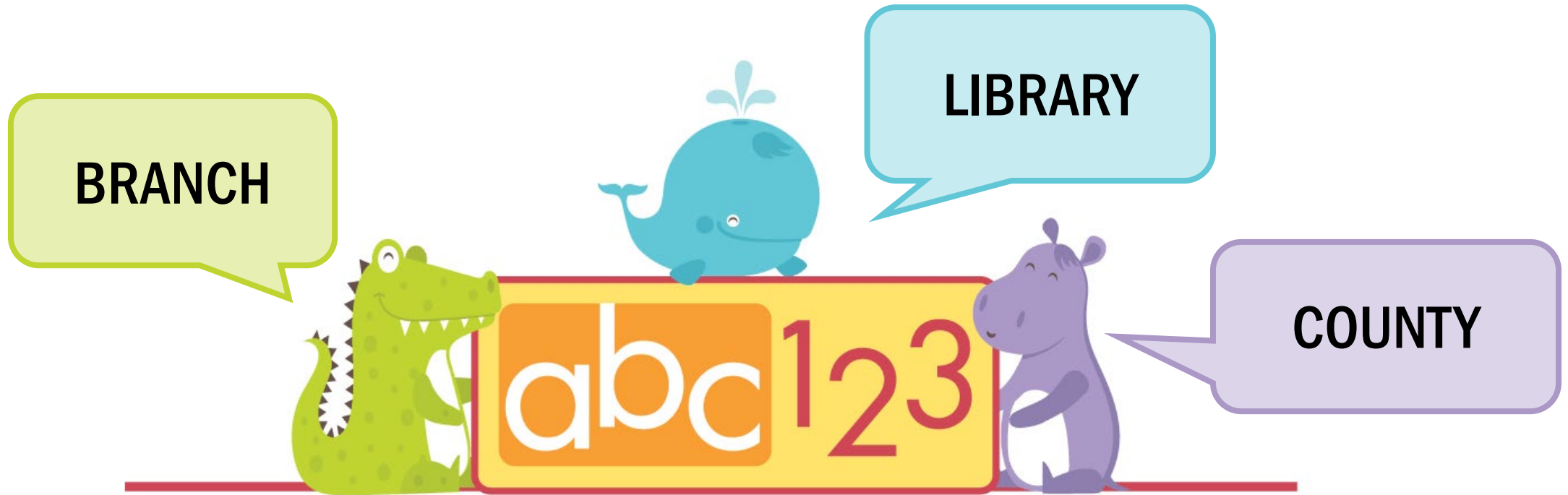
Tami Austin

**Library Assistants**

Em Hammer and Olivia Smock



## Early Learning supports the:



## BRANCH



### Explore Color!



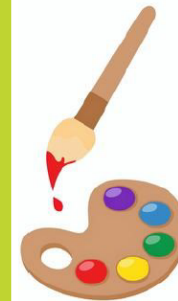
An open-ended project designed especially for 3-6 year olds

Check out everything in your super fun kit.  
Talk about colors with your grown-up.

What happens when you mix  
colors? What new colors can you  
create? Paint a picture.

Sprinkle some salt on the top of one  
of your painted pictures. Want to  
put tissue paper on another paper  
and get it wet? What happens?  
Why?

Paint and color all the things!



# LIBRARY



The Big Play







**1,000 books**  
before kindergarten



Storytime Summit



# EARLY LEARNING

at the County Library



Conservation Garden



Wheeler Farm



Storytime to Go



## COUNTY



Books for Baby



South Main Clinic Reading Room





**What's next for  
Early Learning?**