

# Utah Rare Plant Team Updates from Washington County

HCAC Meeting  
September 24, 2025



**Mindy Wheeler**  
USU/ UDWR  
Native Plant  
Conservation  
Project Leader





# Updates from the Field – Spring 2025

## Utah Rare Plant Team

Holmgren's  
milkvetch



AND



Jones'  
Cycladenia

# Updates from the Field – Spring 2025

## Utah Rare Plant Team

In 2025....  
Dry Year,  
so..

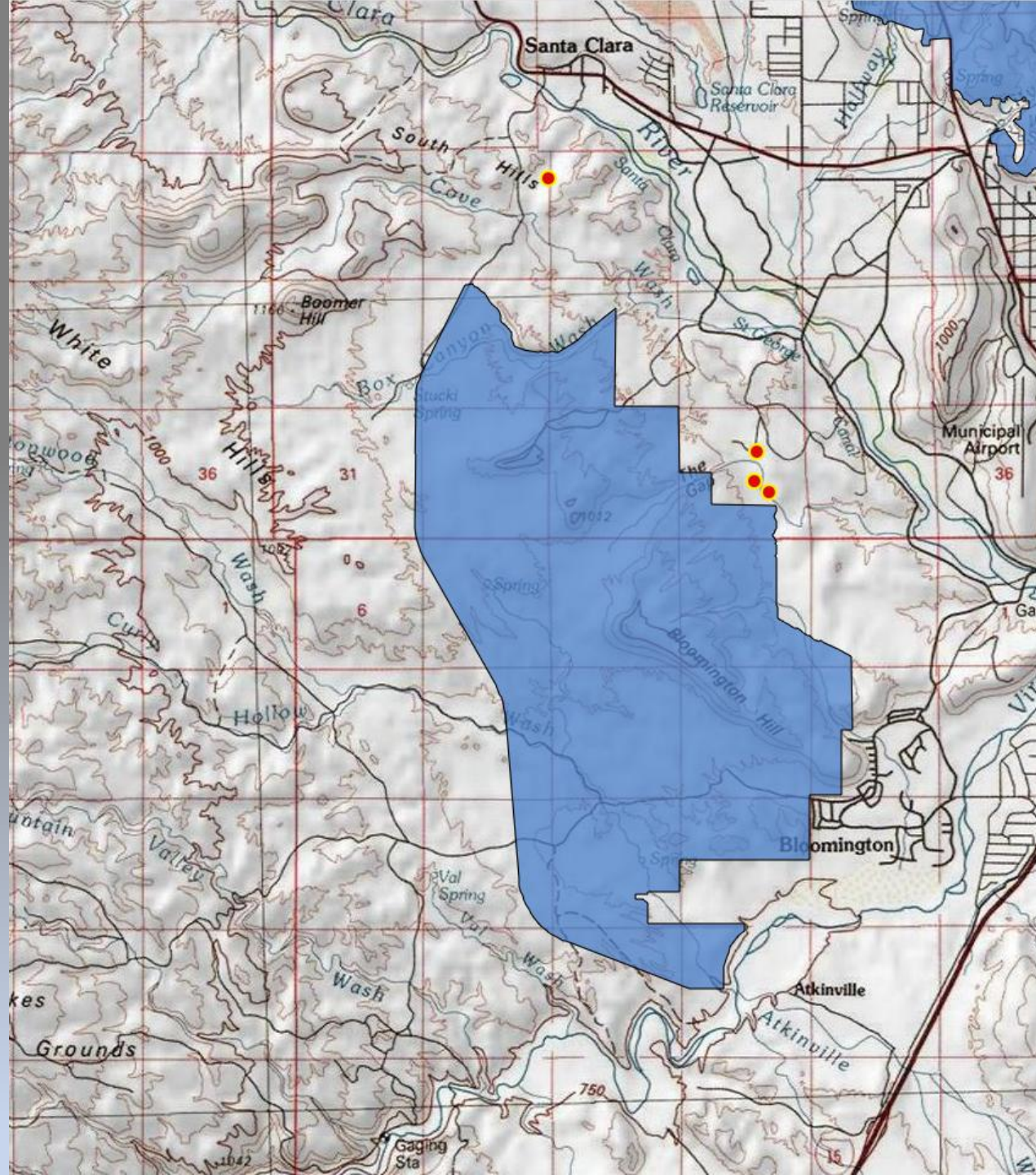


**Holmgren's  
was not  
found!**



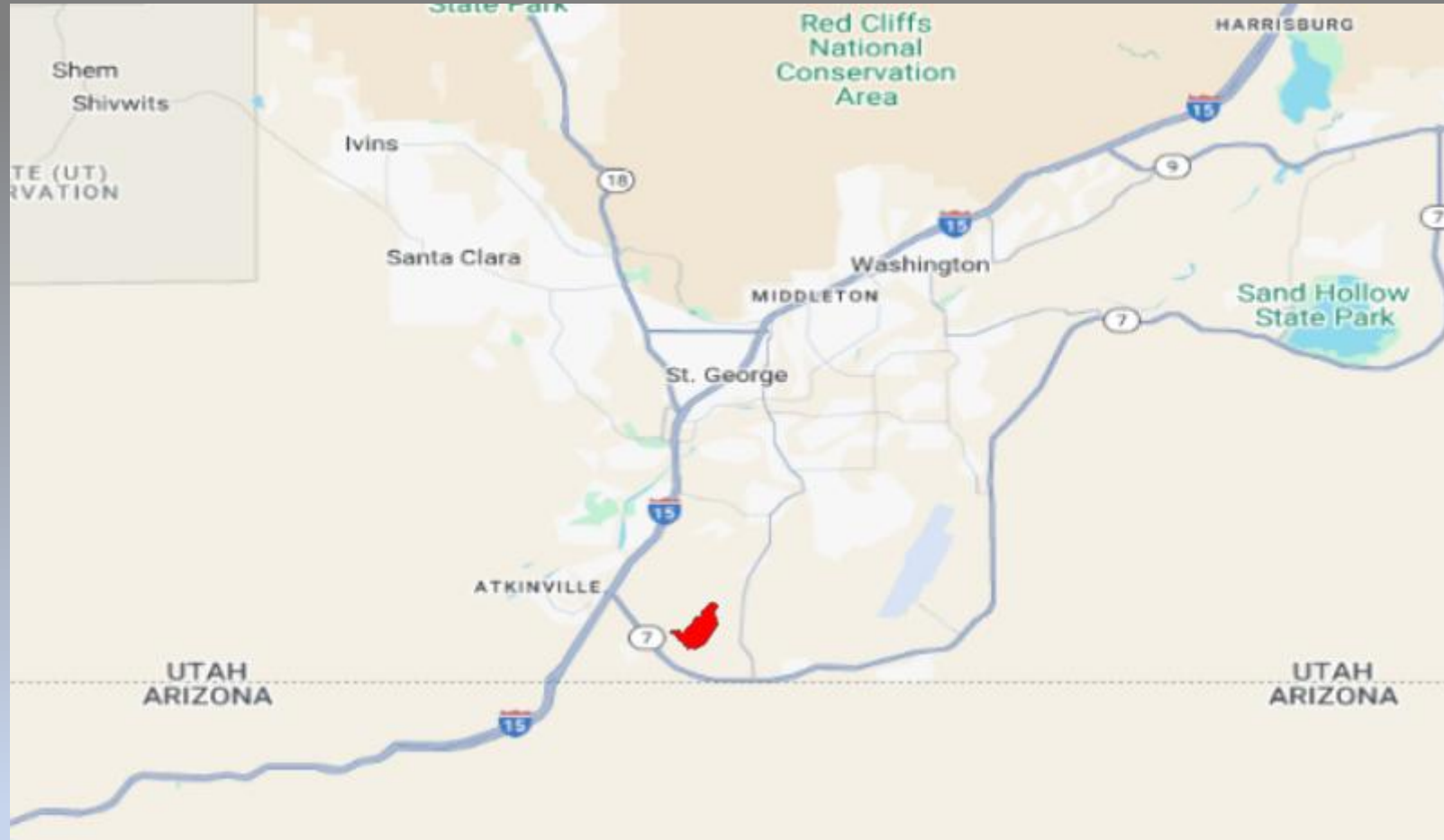
All are 'absence' points for  
*Astragalus holmgreniorum*

Full day of searching for 2  
experienced botanists  
knowing where to look from  
habitat assessments and past  
observations



# **\*Proposed\*** Central Valley Preserve for Holmgren's milkvetch in critical habitat

USFWS will be reaching out to SITLA in the near future





# Updates from the Field – Spring 2025

## Utah Rare Plant Team



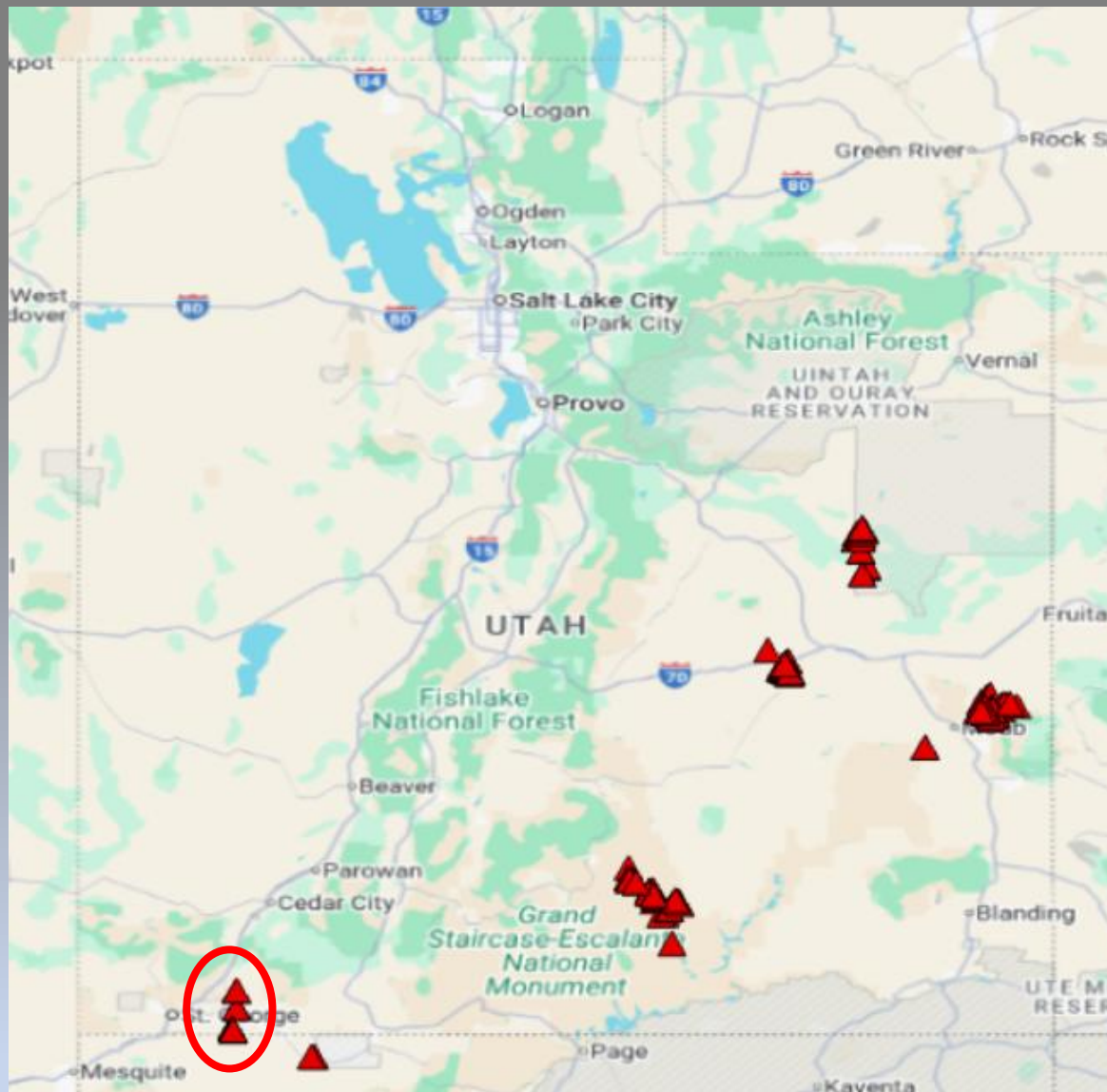
### Jones' Cycladenia

- Listed as Threatened
- found in 3 spots in Washington County in 2024



# Updates from the Field – Spring 2025

## Utah Rare Plant Team



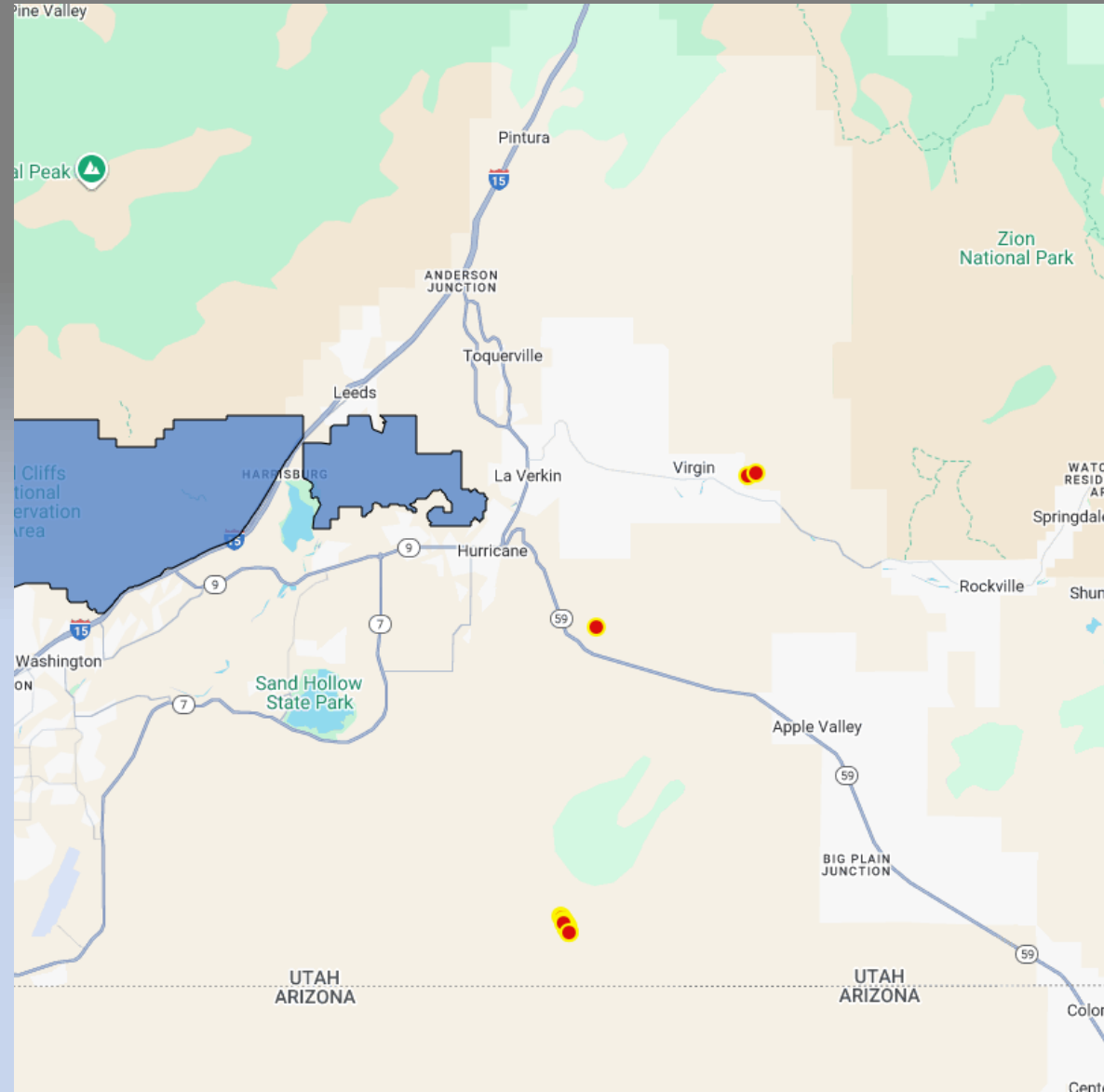
Distribution of Jones  
Cycladenia

*Cycladenia humilis* var  
*jonesii*  
OR  
*Cycladenia jonesii*

Federally Listed:  
Threatened

# Updates from the Field – Spring 2025

## Utah Rare Plant Team

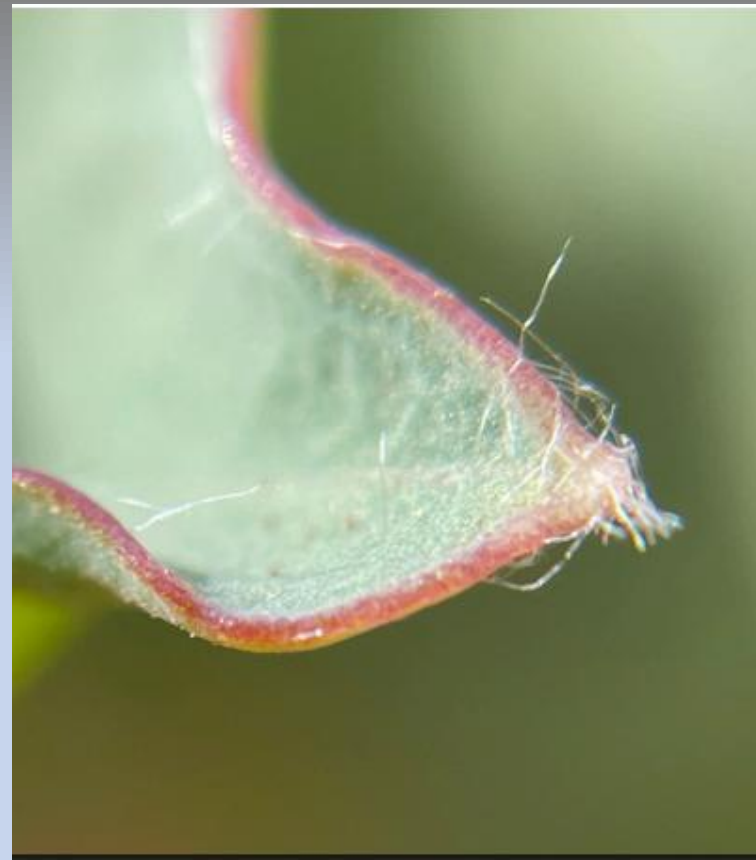




# Updates from the Field – Spring 2025

## Utah Rare Plant Team

### Washington County Plants





# Updates from the Field – Spring 2025

## Utah Rare Plant Team

### Northern/Central UT plants





# Utah Rare Plant Team – Spring 2025

Genetics work is ongoing at BYU (Dr. Leigh Johnson) to work through what these differences mean

Leigh Johnson (BYU geneticist) about Jones' *Cycladenia* “..it would make the most sense to recognize the pipe springs (AZ)/St. George material as a variety or subspecies, because they are more different from the rest of the Utah material than the rest of the Utah material is from each other.



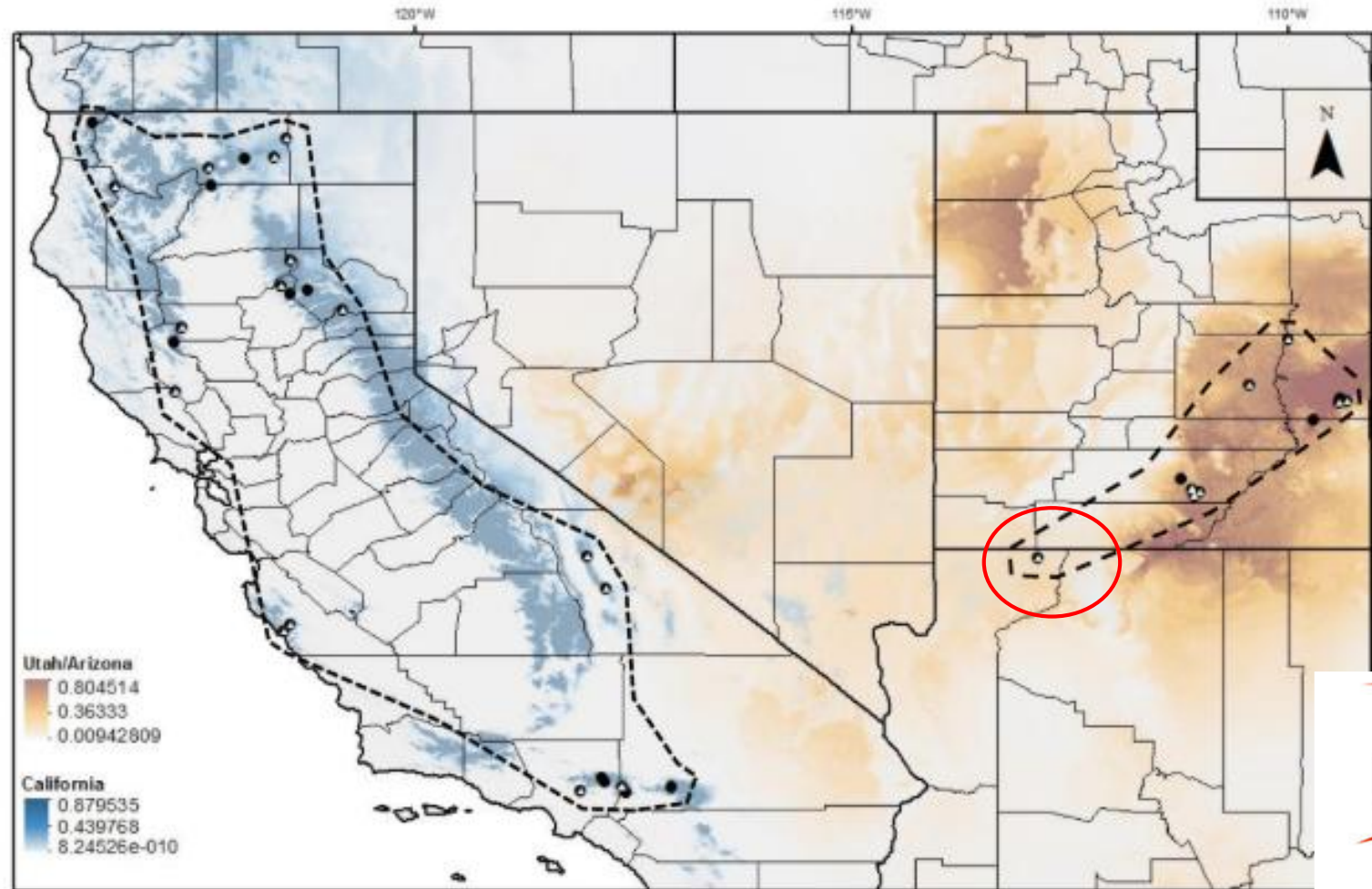
# Utah Rare Plant Team – Spring 2025

## Taxonomy and background

*Cycladenia humilis* (California)  
vs. *Cycladenia jonesii* (Utah and  
Arizona)

- Major geographic separation
- Distinct habitat preferences
- No gene exchange

Ecological Niche Modeling map from  
"Limiting Species and Varieties of  
*adenia humilis* (Apocynaceae)"  
/ Kathryn Brabazon, 2015





# Utah Rare Plant Team – Spring 2025

1

## Siler's Pincushion Cactus (*Pediocactus sileri*)

---

**2023 Monitoring results &  
Census comparison 2003 vs 2024  
White Dome Nature Preserve**

Submitted to:

Elaine York

The Nature Conservancy

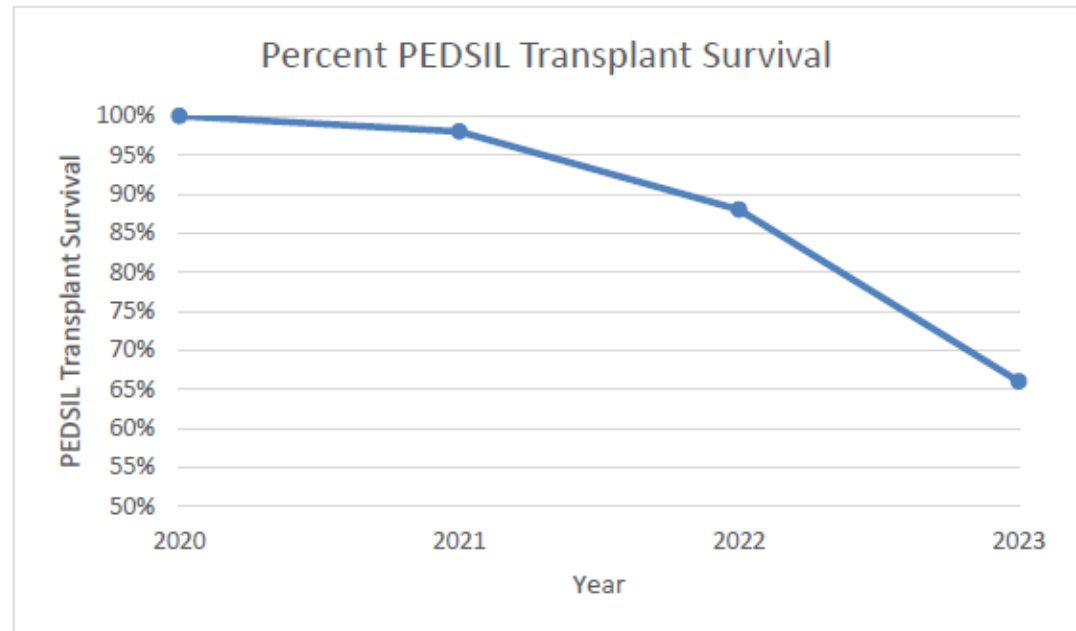
559 E S Temple St, Salt Lake City, UT 84102



# Utah Rare Plant Team – Spring 2025

**Table 2. PEDSIL Observations in 2024**

	Reproductive	Nonreproductive	Living Total (Phenology not specified)	Plant Density Estimate Per Acre	Dead
2003	NA	NA	113	0.36	0
2024	98	73	171		1



**Figure 2. Percentage of Survived PEDSIL (Transplanted between 2020-2022).**



# Utah Rare Plant Team – Spring 2025

Thanks!!

Mindy Wheeler

[mindywheeler@utah.gov](mailto:mindywheeler@utah.gov)

385-235-1062

