

Baby Watch

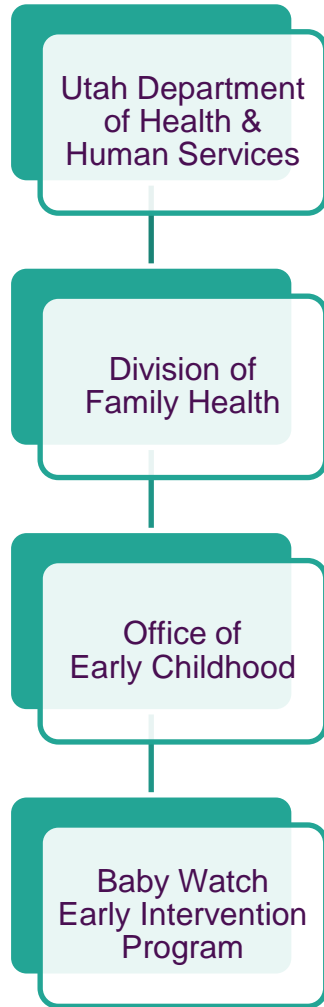
Early Intervention Program

Eliza Hintze MS CCC-SLP
ehintze@utah.gov



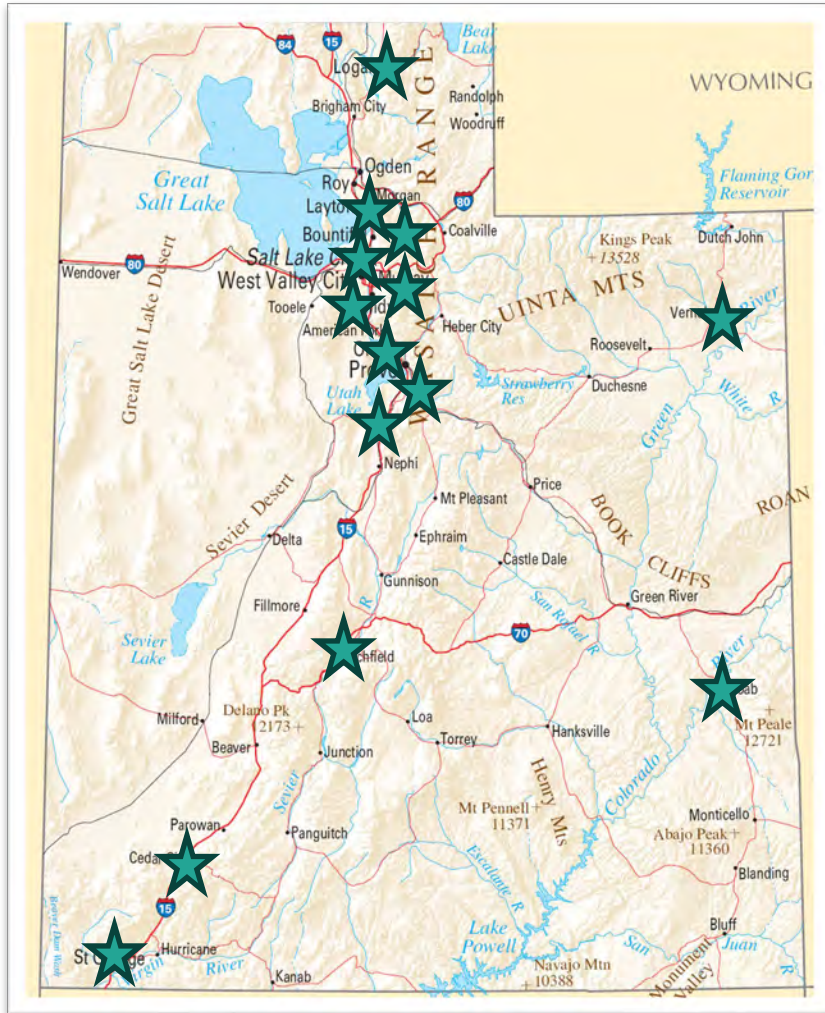
Baby Watch's Purpose

To enhance early growth and development in infants and toddlers, who have developmental delays or disabilities, by providing individualized support and services to the child and their family



Baby Watch is the state agency responsible for Part C early intervention (EI) services in Utah.

Our statewide network of EI programs serves the families of eligible infants and toddlers with developmental delays or disabilities.



**Baby Watch contracts with
14 local EI programs that
provide services statewide.**

- Nonprofits
- Universities
- County health departments
- School districts
- In-house





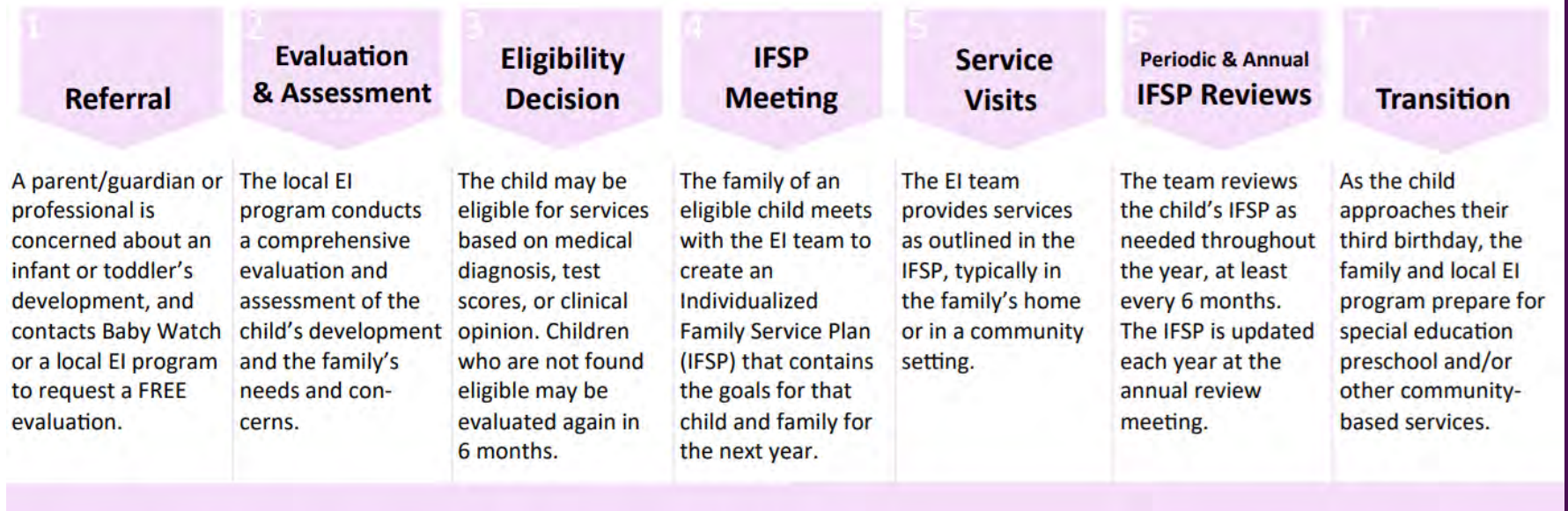
Services provided in **natural environments** by a team of early childhood professionals:

- Developmental specialists
- Early childhood special educators
- Registered nurses
- Speech-Language Pathologists
- Occupational/Physical Therapists
- Social Workers
- Hearing/vision specialists

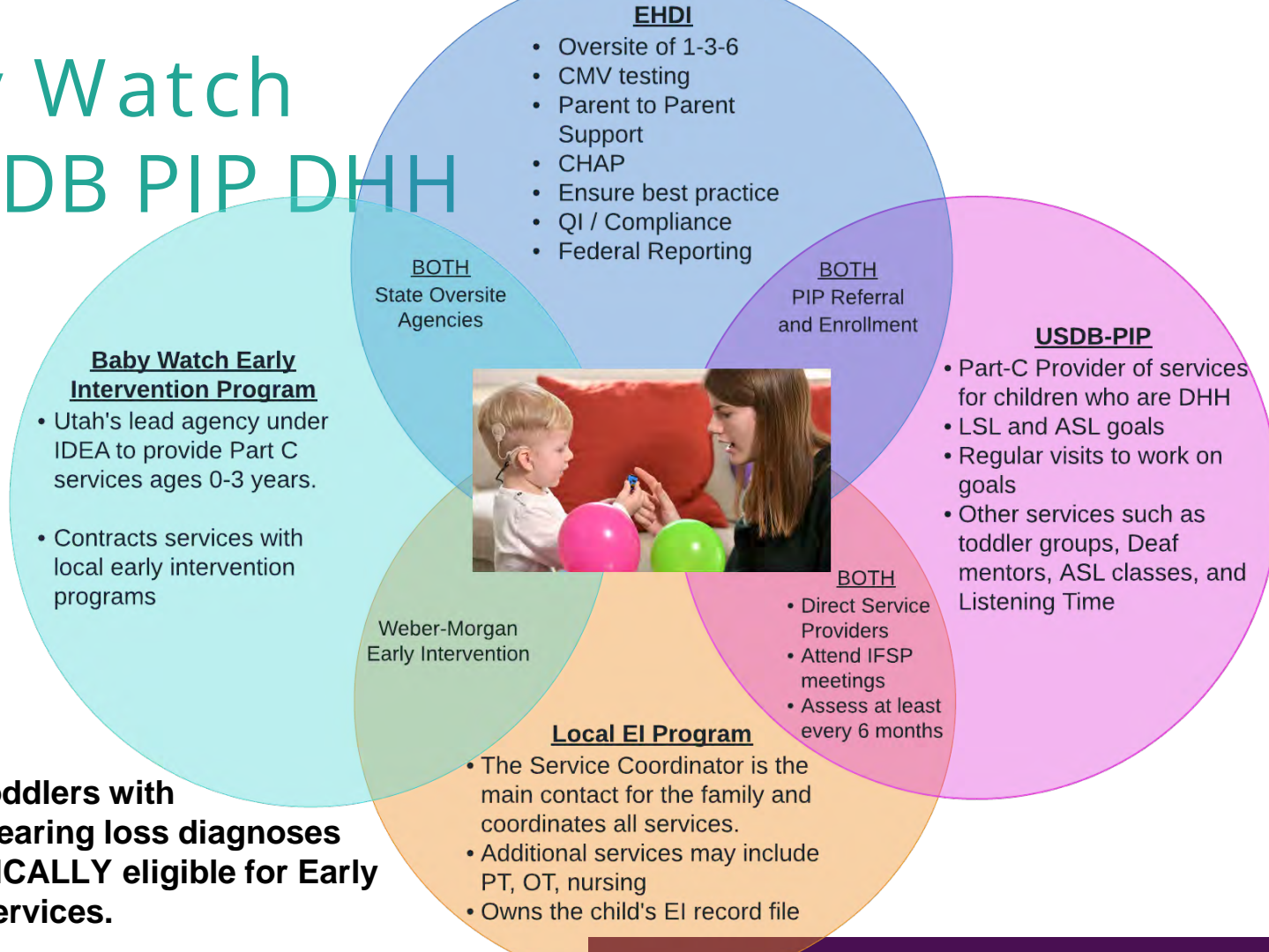


Early intervention (EI) is a
**parent coaching
program** that teaches
families how to support their
infant or toddler's development.

Our Process



Baby Watch & USDB PIP DHH







Utah infants/toddlers with documented hearing loss diagnoses are AUTOMATICALLY eligible for Early Intervention Services.

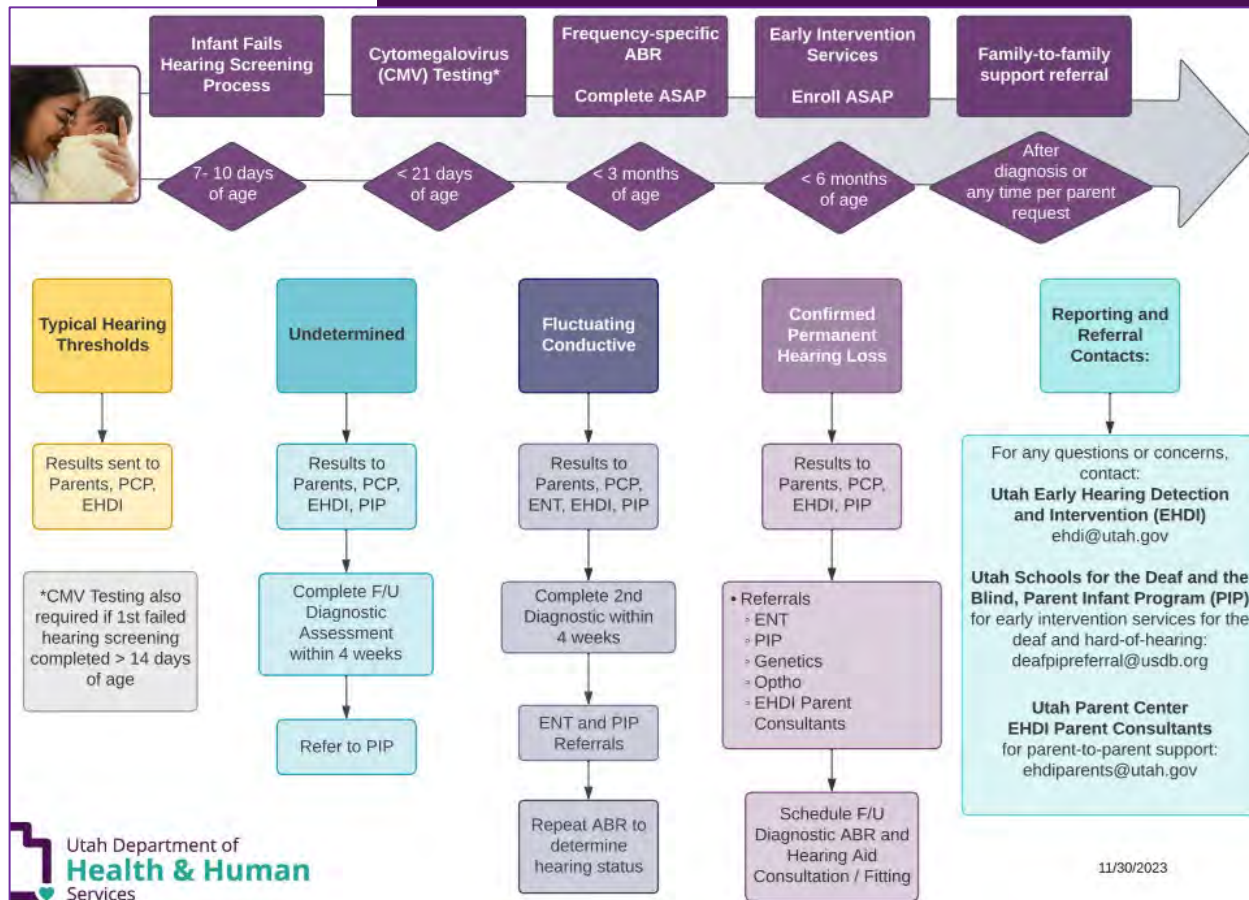
Part C Service Responsibilities

Baby Watch Early Intervention

USDB PIP DHH

SERVICES AS DESCRIBED IN THE PART C FEDERAL REGULATIONS	SERVICE COORDINATION 	EARLY INTERVENTION 	AUDIOLOGY 	VISION 
(§303.13 and §303.34)	<ul style="list-style-type: none"> Coordinating all Part C services across agency lines Informing families of their rights and procedural safeguards Coordinating funding sources Assisting parents in gaining access to and coordinating Part C services Coordinating evaluations/assessments Facilitating and participating in IFSP development, review, evaluation Coordinating and monitoring the delivery of timely services Making referrals for needed services, scheduling appointments Facilitating development of a transition plan to preschool/other services 	<ul style="list-style-type: none"> Assistive technology device and service Family training, counseling, and home visits Health services Nursing services Occupational therapy Physical therapy Psychological services Social work services Special instruction Speech-language pathology services Transportation and related costs 	<ul style="list-style-type: none"> Identification of children with auditory impairments Determination of the range, nature, degree of hearing loss and communication functions Auditory training Aural rehabilitation Sign language and cued language services Speech reading and listening devices Orientation and training Hearing loss prevention Determination of the child's individual amplification: selecting, fitting, and dispensing listening devices Evaluating effectiveness of listening devices 	<ul style="list-style-type: none"> Evaluation and assessment of visual functioning, including diagnosis and appraisal of specific visual disorders, delays, and abilities that affect early childhood development Referral for medical or other professional services Communication skills training Orientation and mobility training for all environments Visual training Additional training necessary to activate visual motor abilities

EHDI Diagnostic & Referral Process



https://familyhealth.utah.gov/wp-content/uploads/Office_CSHCN/pdf/ehdi/EHDI-PIP-Referral-Process.pdf

Common Concerns



Cost



- Initial evaluation FREE for everyone
- Services are FREE for families with Medicaid or CHIP
- Monthly family fee is income-based, on a sliding scale

Convenience



- Services provided in natural environments, usually in the home
 - Appointments at days/times that are convenient for the family
 - Goals determined by the family, often in context of daily routines
-

Language Barriers



- All services provided in family's preferred language
- Many programs have bilingual English/Spanish speaking employees
- Foreign language interpreters available

Respect & Control



- Participation is 100% voluntary
- Families are the experts on their child
- Family coaching model puts caregivers in the driver seat

Red Tape



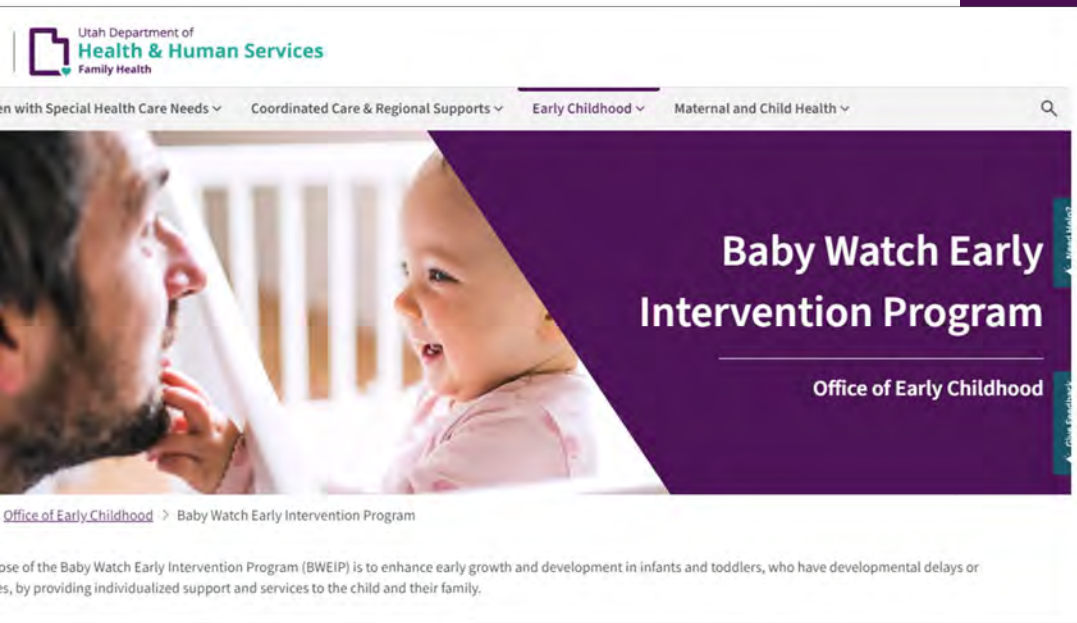
- ANYONE can refer a child for an evaluation (doctor referral not needed)
 - Families can contact local EI programs directly to request an evaluation
 - Eligibility decision within 45 days
-

Privacy



- All family info shared with the local EI program is confidential
 - Service records stored in secure online database
 - Federal FERPA laws protect family's rights
-

Baby Watch



- babywatch.utah.gov
- Local EI program contact info
- Baby Watch brochures
- Baby Watch policy

USDB PIP DHH



- <https://www.usdb.org/deaf-school/early-childhoodbirth-to-age-3>
- Make a secure referral
- Find a service provider

Q&A



thank you

babywatch.utah.gov