



PUBLIC SAFETY



EXISTING CITY CODE

9-2-104 Unlawful Parking.

(1) ...It shall be unlawful to stand or park any motor vehicle in a street other than parallel with the curb and with the two (2) right wheels of the vehicle within twelve inches (12") of the regularly established curb line, except on those streets which have been marked for angle parking. On streets which have been marked for angle parking, vehicles shall be parked at the angle to the curb indicated by such marks.



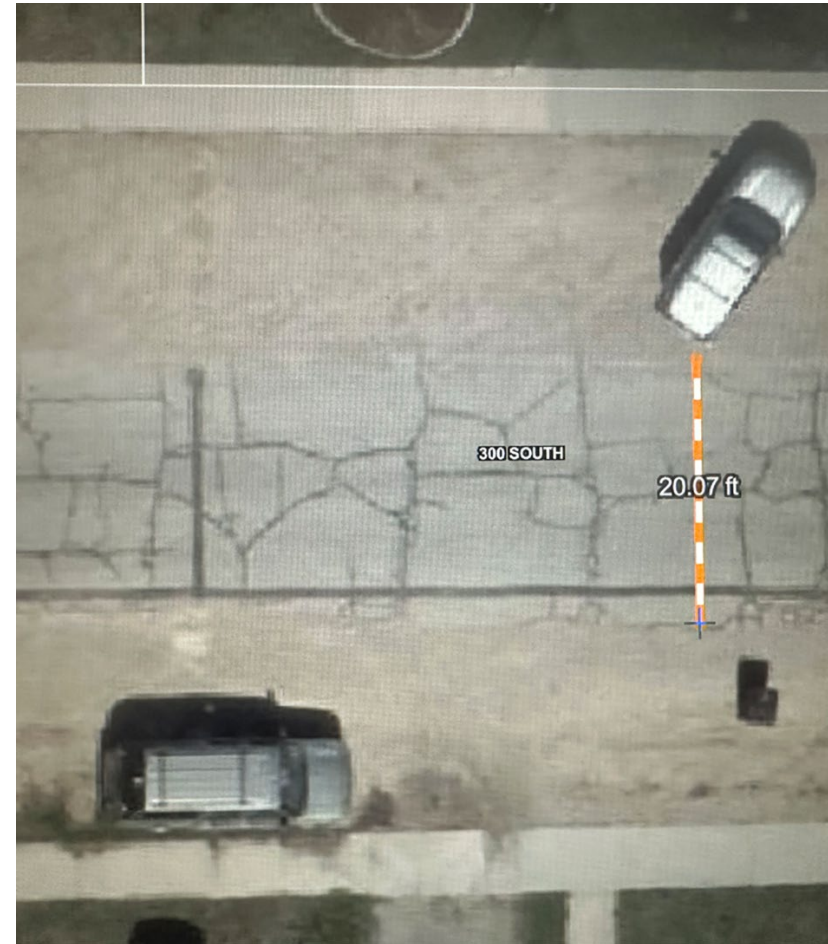
EXISTING CITY CODE

9-2-104 Unlawful Parking.

(5) No person shall park a motor vehicle or trailer within an alley or street in such manner or under such conditions as to leave less than ten feet (10') of the width of the roadway available for the free movement of vehicular traffic.



300 S





EDUCATION PRIOR TO ENFORCEMENT

- We will place door hangers on residences and vehicles, with information about legal and illegal parking, specific to 300 S.
- We will issue warnings on vehicles that are in violation, over a period of one month.
- After one month, we may then begin to issue citations for violations.



OTHER LOCATIONS IN SPRINGVILLE

Public Works is drafting new guidelines for on-street angle or perpendicular parking, considering:

- Minimum pavement width requirements
- Plan review and compliance
- Roadway classification restrictions
- Proximity restrictions
- Approval process
- Enforcement and exceptions