



PUBLIC SAFETY



EMERGENCY OPERATIONS PLAN

- A **framework** to approach **response and recovery** operations.
- **Coordinates resources** needed to:
 - save lives,
 - protect property and public health,
 - maintain or restore city processes and productivity, and
 - preserve citizens' confidence in their government.
- Applicable to **all city departments** that may be **tasked** to perform activities during response or recovery.
- Seeks the **most reasonable course of action**.



NATIONAL INCIDENT MANAGEMENT SYSTEM (NIMS) COMPLIANCE

- **Resource Management:** Standard mechanisms to systematically manage resources (e.g., **personnel, equipment, supplies, terms, and facilities**) both before and during incidents, to help organizations more effectively share resources when needed.
- **Command and Coordination:** Leadership roles, processes, and recommended organizational structures for incident management at the **operational and incident support** levels, and an explanation of how these structures interact to manage incidents effectively and efficiently.
- **Communications and Information Management:** Systems and methods that help ensure incident personnel and other decision makers have the **means and information** they need to make and communicate decisions.

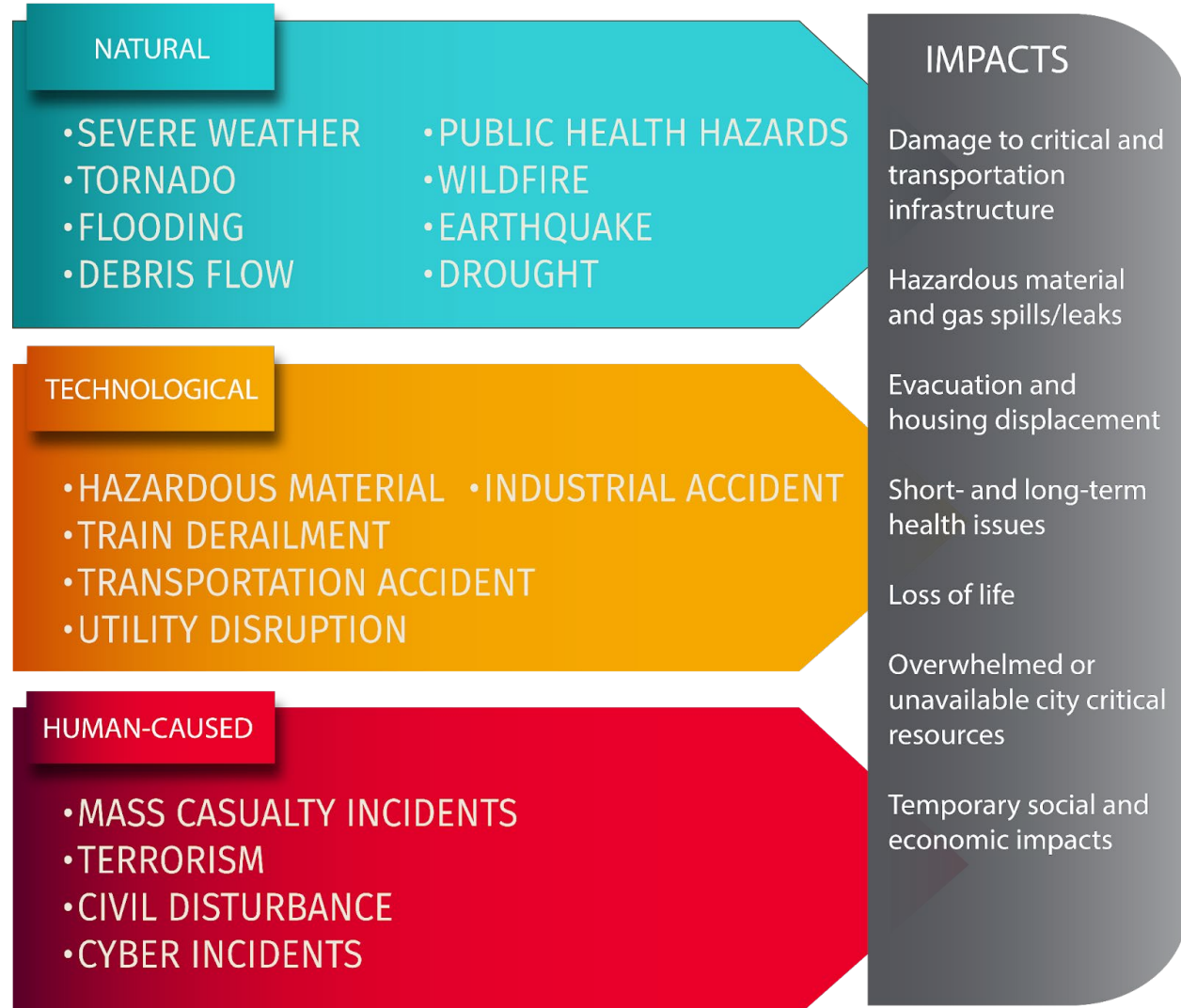


DIRECTION AND CONTROL

- **Executive Policy Group:** the Mayor and Council Members with the City Administrator, City Attorney and Director of Public Safety as advisors.
- The Mayor, City Administrator, Emergency Manager or Director of any Department has the authority to **activate the Emergency Operations Center (EOC)**.
- The **Everbridge** system will be used for emergency notification in conjunction with the department call-down lists.
- The city may request assistance through the following channels:
 - **Mutual Aid**
 - **Emergency Declaration** - This is declared by local (or state) officials when an incident is anticipated to overwhelm resources.
 - **Federal Disaster Declaration:** Issued by the President, this happens after an incident causes widespread damage.



HAZARD OVERVIEW





VULNERABILITIES

SOCIAL VULNERABILITIES

The demographics of a community and impacts on various groups within the population including vulnerable populations.



PHYSICAL VULNERABILITIES

The built environment including housing stock, business structures, and critical infrastructure; such as transportation, energy, and water systems.



COMMUNITY CONDITIONS

The network of systems of a community that are critical to disaster recovery. These include the status of indicators such as economic, environmental, social, and governmental.





COMMUNITY LIFELINES



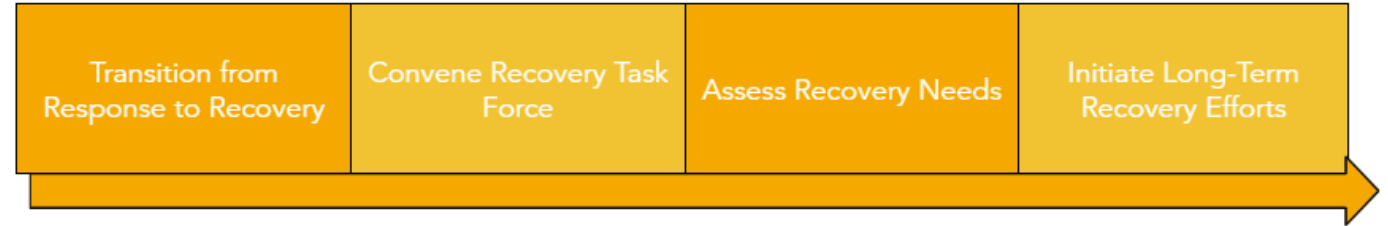


CONCEPT OF OPERATIONS

RESPONSE PHASE (steps to be repeated as many times as necessary)



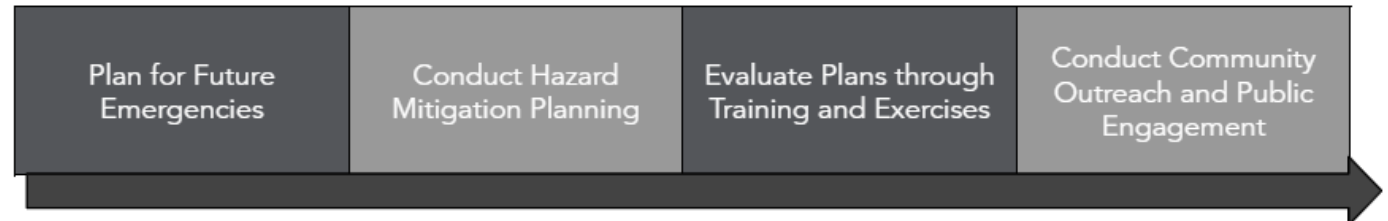
RECOVERY PHASE



MITIGATION PHASE



PREPAREDNESS PHASE





PRIORITIES

- **Save Lives**
- **Protect Public Health**
- **Protect Property**
- **Restore the city's critical processes: community lifelines**
- **Recover city's productivity engines**



EMERGENCY OPERATIONS CENTER

- A centralized, coordinated hub for managing and directing response efforts during emergencies and disasters,
- Primary focus on supporting Incident Command.
- Effective communication, coordinating resources across various agencies and departments.
- Collection and analysis of critical information,
- Supports strategic planning,
- Aids in the overall management of incident response
- Scalable



EOC STAFF

