



Joint TAB-BAC Meeting: 900 South

September 15, 2025

Milestones

- 1992 – Open Space Master Plan
- 2007 – Union Pacific Abandoned Rail
- 2011 – First 9-Line Section completed
- 2015 – 9 Line Master Plan adopted
- 2018 – Bond Passed including 900 South



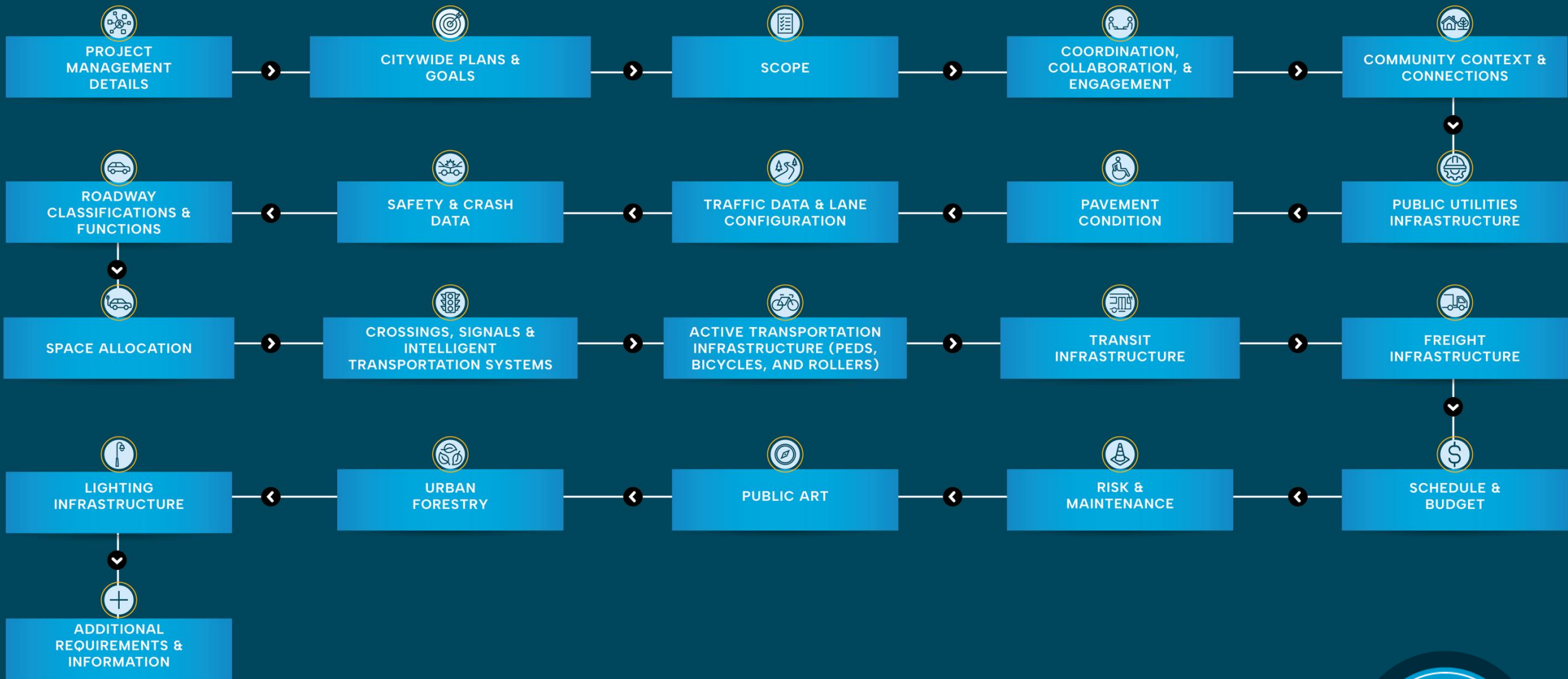
Major Project Components

- Poor pavement quality – OCI was as low as 34 in some areas
- Utilities in poor condition
- Trail construction
- Parking Demand Pressure
- Traffic issues around West Temple
- Transit Access
- RDA Opportunities

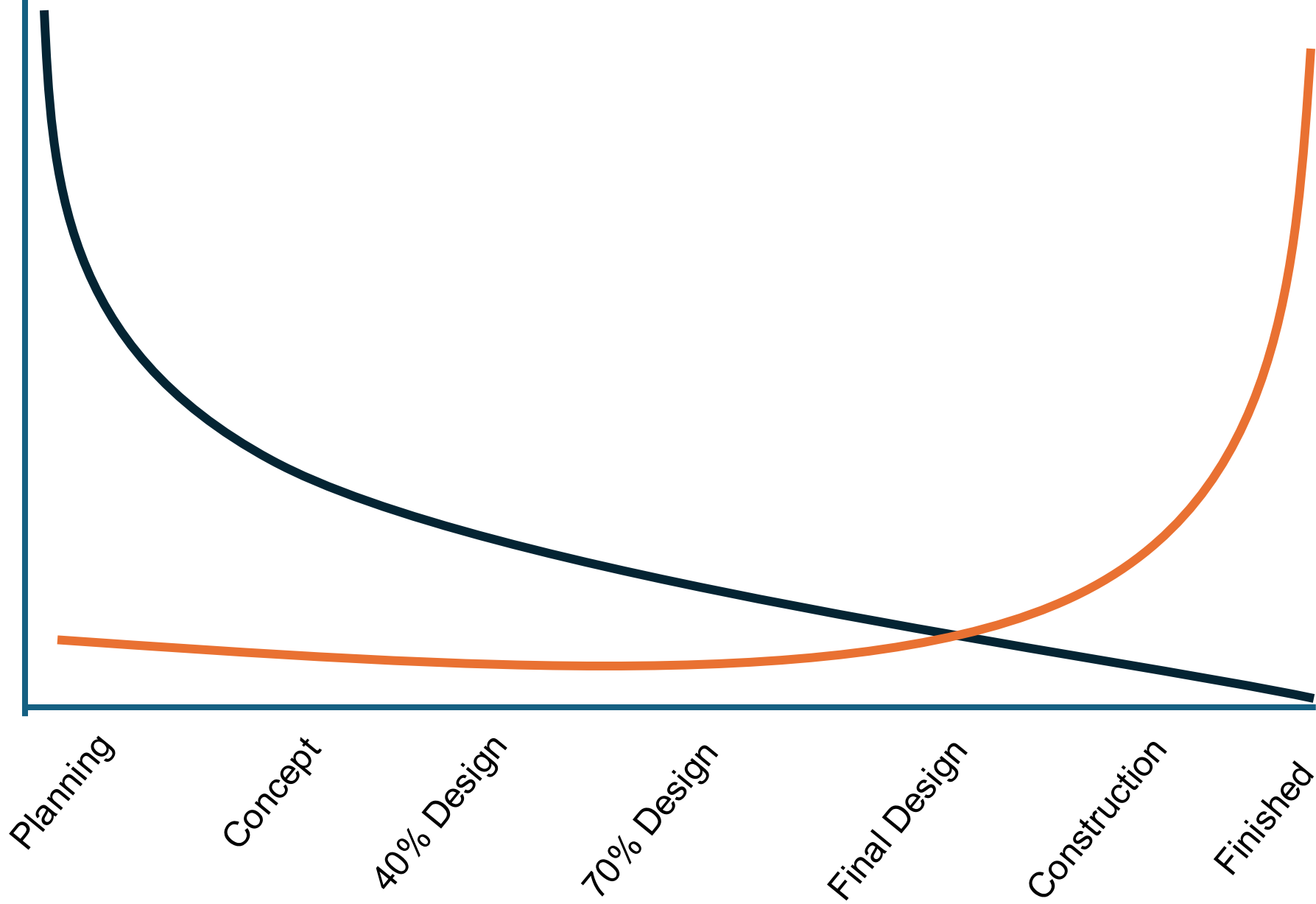




Current Project Process



Ability to make changes



Public Interest





Project Outcomes

900 South

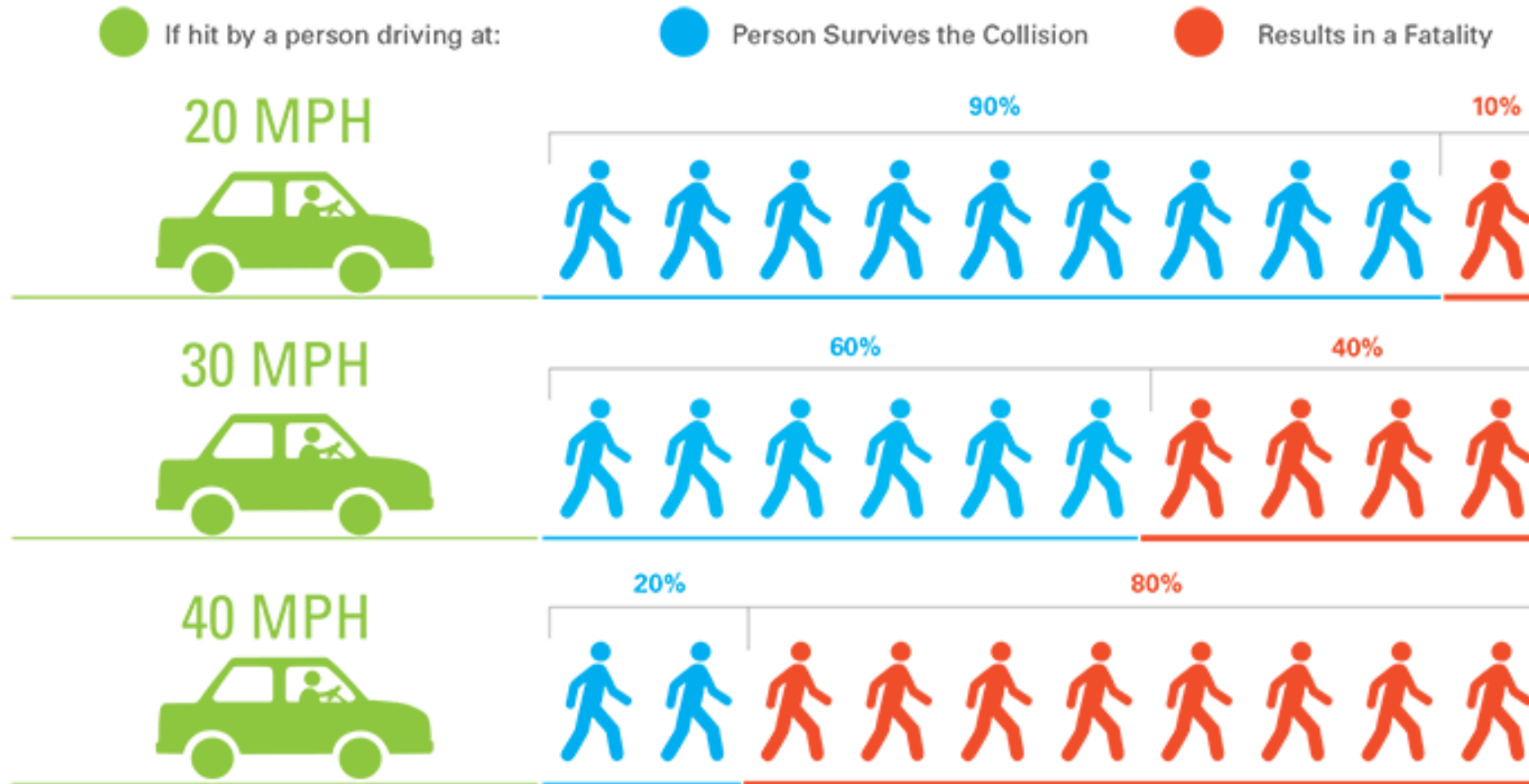


900 South



900 South

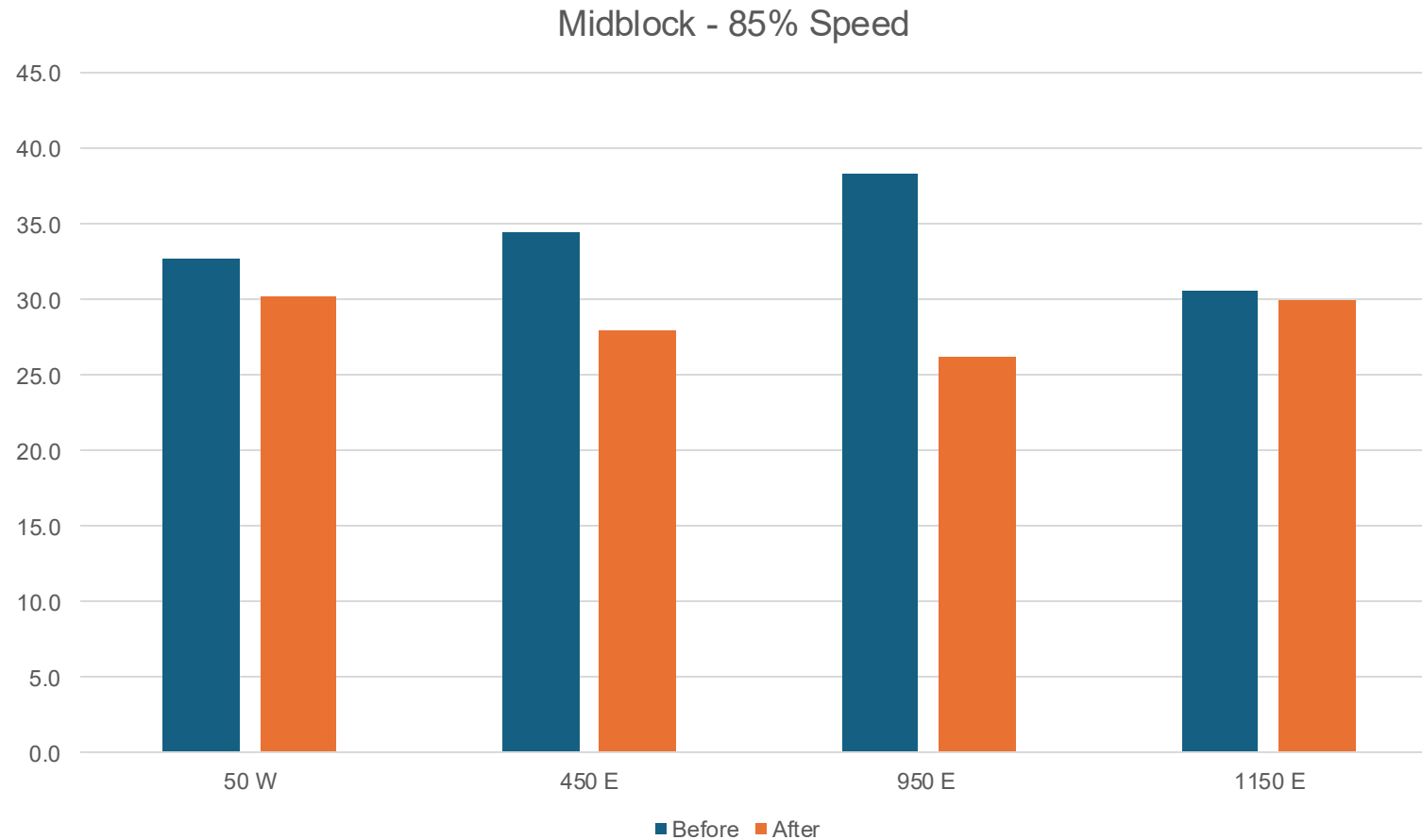




Data source: US Department of Transportation, Literature Reviewed on Vehicle Travel Speeds and Pedestrian Injuries. March 2000



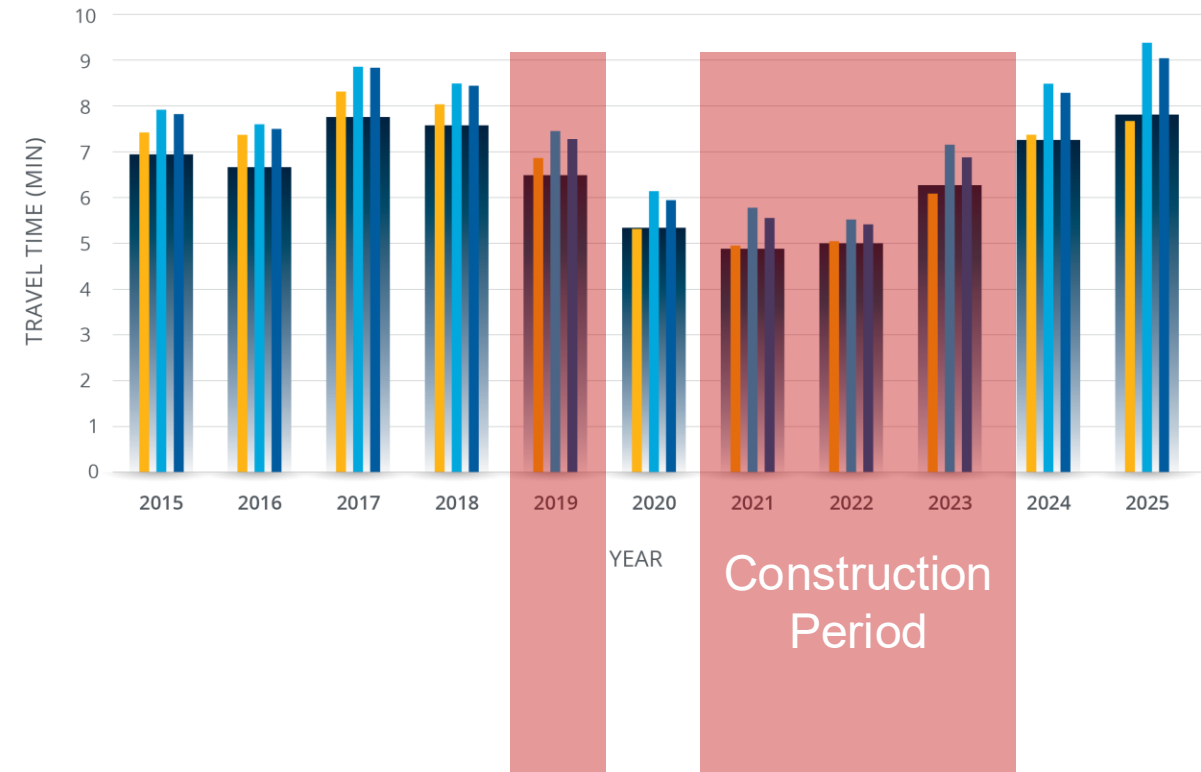
Traffic Speeds



900 S. AVERAGE TRAVEL TIME PER YEAR (EB)

FROM 300 WEST TO 1100 EAST

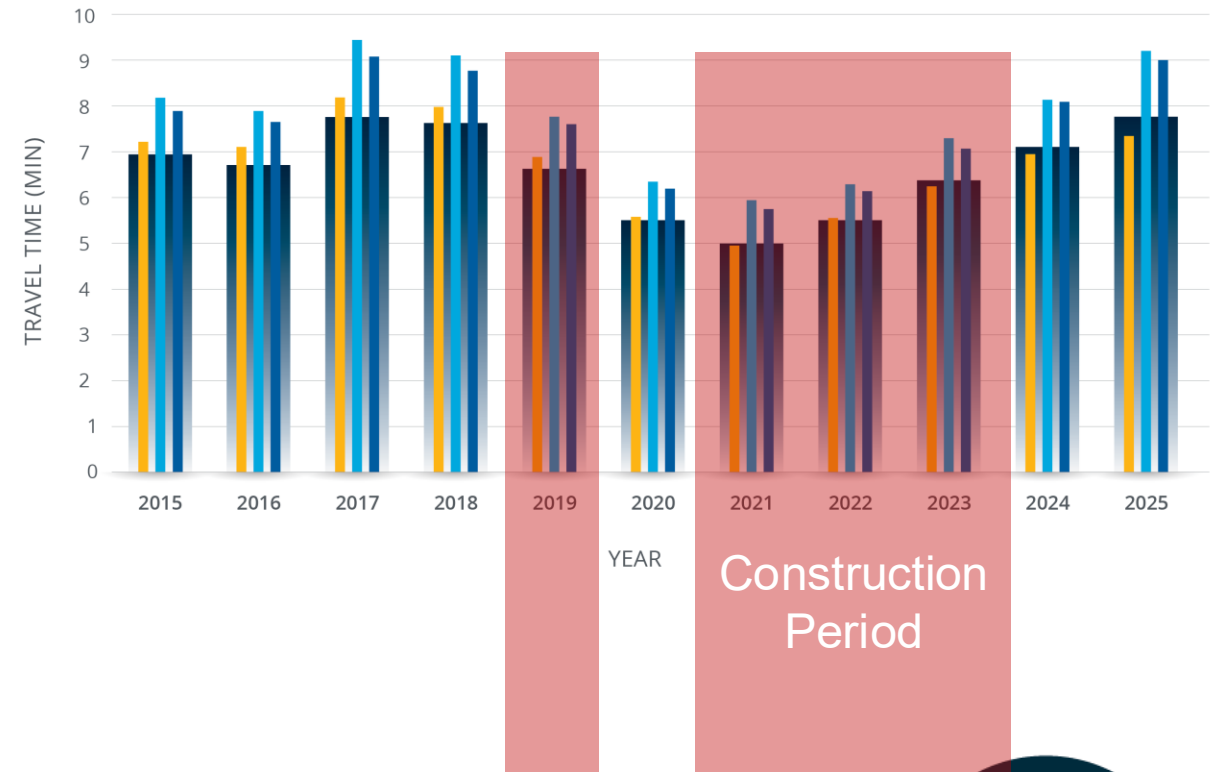
■ Daily Average ■ AM Average ■ Midday Average ■ PM Average



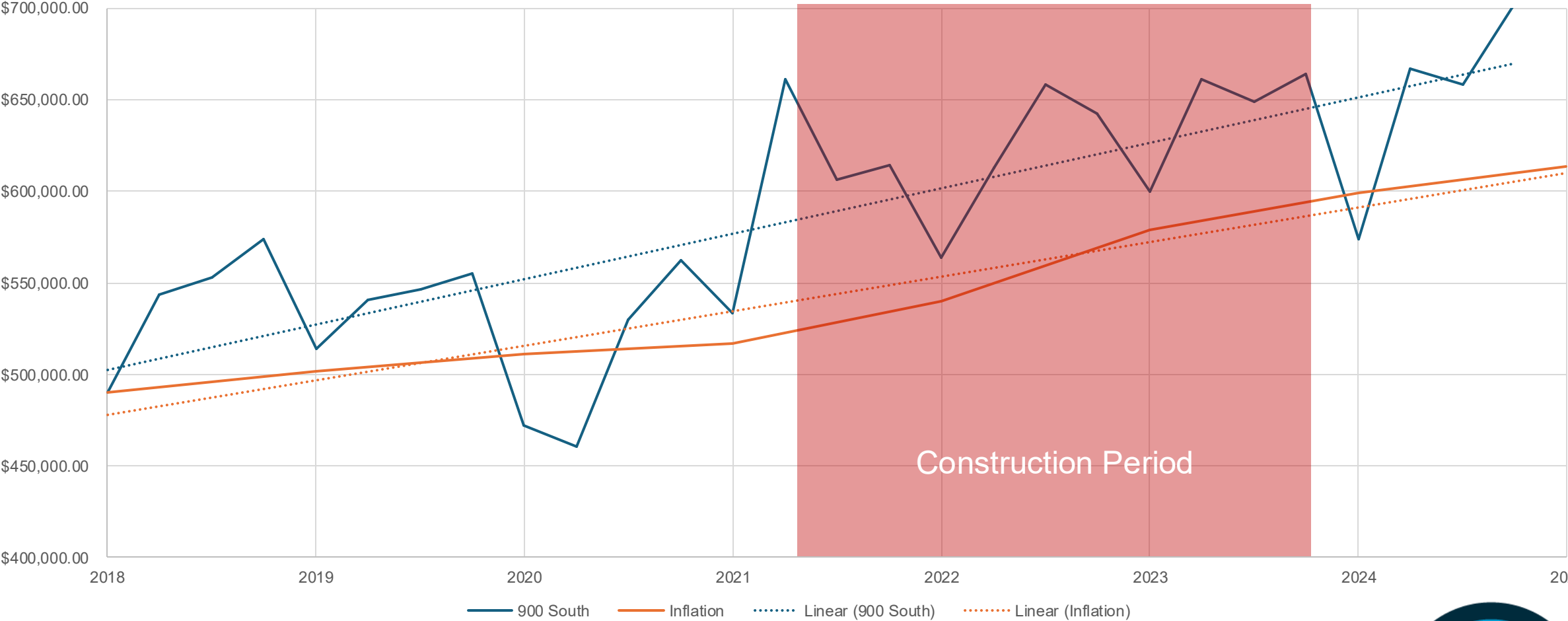
900 S. AVERAGE TRAVEL TIME PER YEAR (WB)

FROM 300 WEST TO 1100 EAST

■ Daily Average ■ AM Average ■ Midday Average ■ PM Average



900 South Sales Tax



Business Activity

- 20 NET new businesses

The Salt Lake Tribune

‘Main Street USA’? Feels like Portland? Here’s what makes this SLC street ‘good and cool.’

Bungalows, a bike and walking path, good food and a network of supportive businesses are combining to give this developing part of 900 South a vibe similar to Portland.





THANK YOU

For questions contact or to learn more, please
contact Salt Lake City Transportation