

# Board Meeting

August 21, 2025

Stephanie Barber-Renteria & Chanse Rinderknecht  
Energy & Minerals

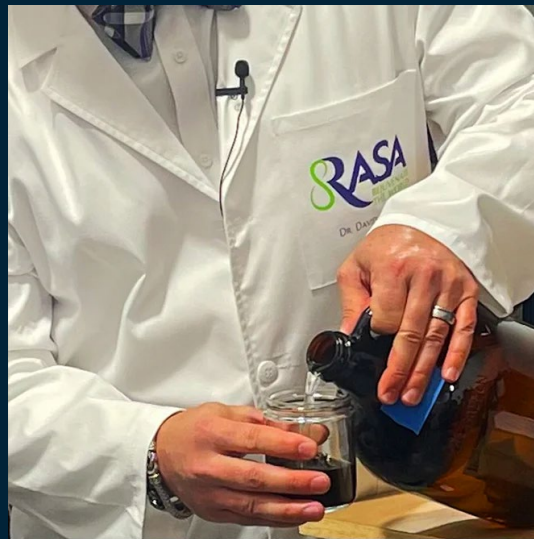


# Rasa 50 OBA

This is a topographic map of the Pecos River area in New Mexico. The map features a grid system with labels such as T15.5S R24E, T16S R24E, T15.5S R25E, and T16S R25E. A scale bar at the bottom left indicates a scale of 1:100,000, with a distance of 2 miles. The map shows the Pecos River, Pecos Canyon, and surrounding terrain. A red box highlights a specific area on the map, located near the intersection of the Pecos River and Pecos Canyon. The map also includes various geographical features such as ridges, canyons, and mountains, as well as a network of roads and trails.



Data represented on this map for REFERENCE USE ONLY and is not suitable for legal, engineering, or surveying purposes. Users of this information should review or consult the primary data and information sources to ascertain the usability of the information. The Trust Lands Administration provides this data in good faith and shall not be liable for any damages, including consequential damages, arising from the use of this information, whether in or in connection with the use or the inability to use the data. Herein, Land parcels, lease boundaries and mineral rights are not shown. The Trust Lands Administration and its managers may have knowledge of the correct Ownership Land Surface boundaries (if present) as shown on the map. The Trust Lands Administration to reflect current trust lands status and surface ownership, rivers, streams, highways, roads, county and state boundaries are not shown. The Trust Lands Administration does not warrant the accuracy of the data. The data was derived from USGS 1:50,000 scale DEM. Please Note: While the Trust Lands Administration seeks to verify data for accuracy and content, discrepancies may exist within the data. Acquiring the most updated Trust Lands Lands Data from the USGS is recommended. The Trust Lands Administration GIS Department welcomes your comments and concerns regarding the data and will attempt to resolve issues as they are brought to our attention. Product Date: March 18, 2020.



## Polar selective agents

### Low entropy

## TARGETS-Separates-Precicely

The background of the slide is a photograph of the interior of Antelope Canyon. The walls are made of smooth, undulating sandstone, creating a series of flowing, wave-like patterns. The lighting is dramatic, with warm orange and red tones in the center, transitioning to deep purples and blues towards the edges and shadows. The overall effect is one of natural beauty and depth.

# **Terms of the OBA**

# OBA Terms

**Bonus Payment**  
**\$1.50/acre ~ \$75.63**

**Rental**  
**Per Rule R850-22-500**  
**\$500**

## Minimum Royalty

### \$500

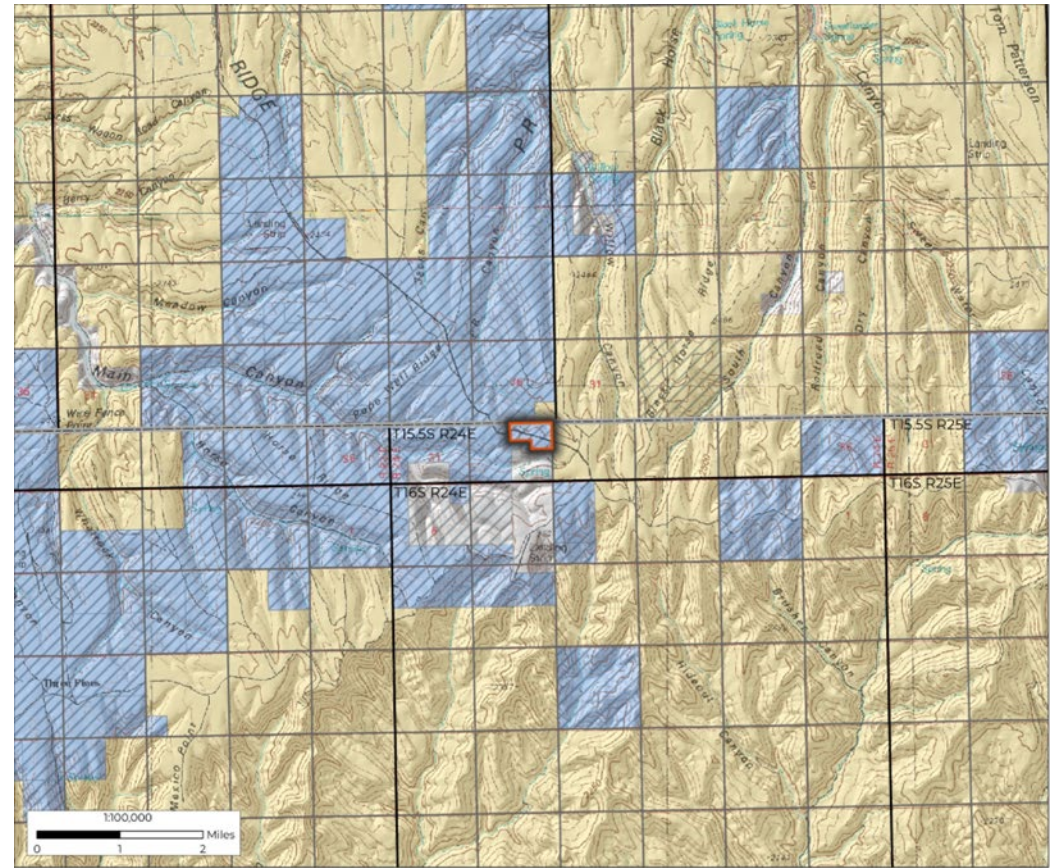
## Production Royalty

**Lessee will pay 8.5% on all produced material**

## Lease Terms

**10 year primary term starting September 1, 2025**

**Held by Production (HBP)**  
**If production royalty exceeds minimum royalty**



# Benefits to TLA

- Hydrocarbon in TLA Tar Sands deposits is prevalent
- Try an new method for recovery
- RASA has the adjacent private leases, which will allow for exploration



**“I move to approve the RASA 50 OBA on the terms set forth in the Memorandum and to have the agency take all further actions necessary to finalize the transaction.”**

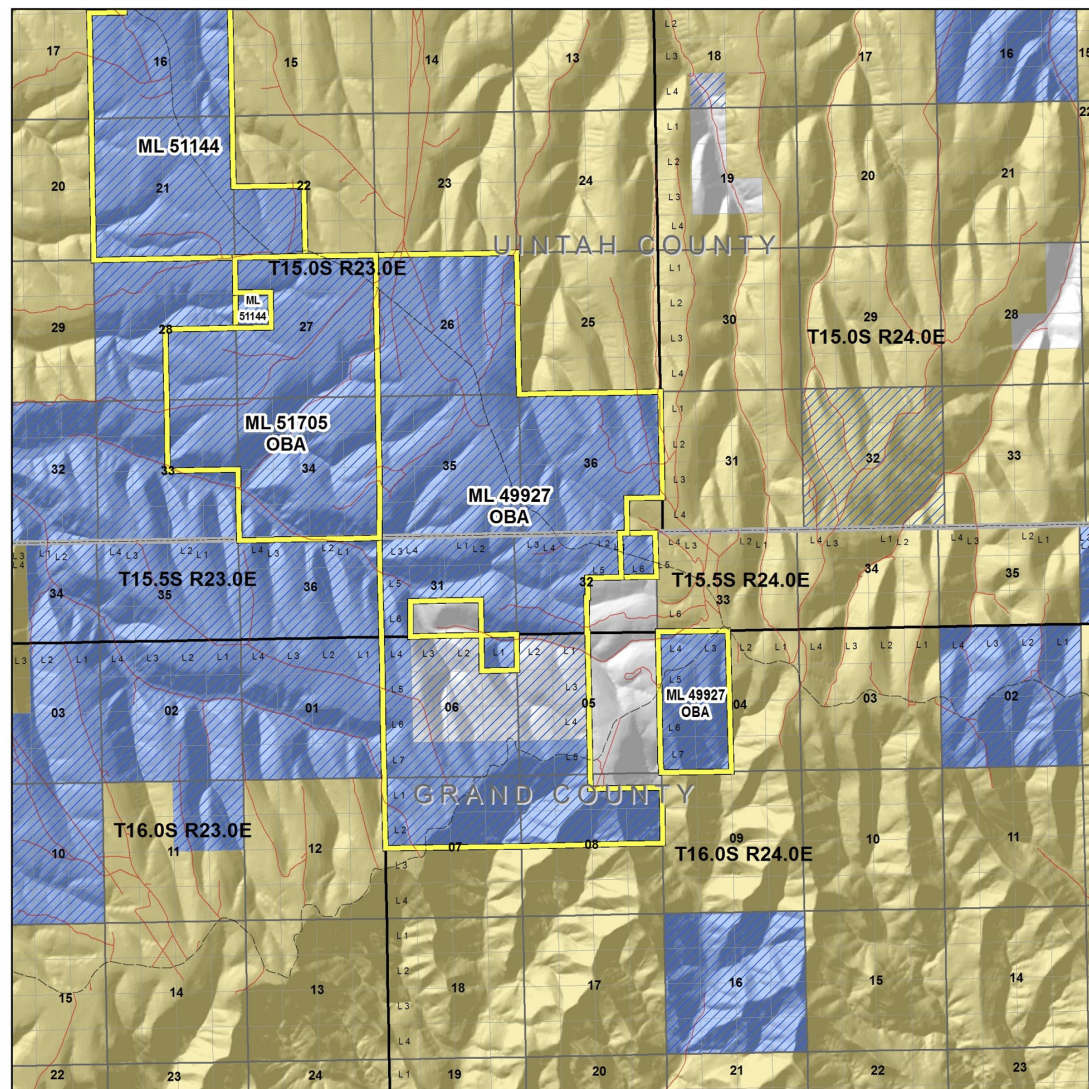
# Board Meeting

August 21, 2025

Stephanie Barber-Renteria & Chanse Rinderknecht  
Energy & Minerals








# 2020 Resources OBA



ML 49927 OBA  
Tar Sands Lease



-  Tar Sands Active Contracts
- Trust Lands Mineral Ownership**
-  Full Mineral
-  Partial Mineral
- Land Ownership and Administration**
-  Bureau of Land Management
-  Bureau of Reclamation
-  Bankhead-Jones Land Use Lands
-  National Recreation Area
-  National Parks, Monuments & Historic Sites
-  National Forest
-  National Wilderness Area
-  National Wildlife Refuge
-  Other Federal
-  Military Reservations and Corps of Engineers
-  Private
-  State Trust Lands
-  State Sovereign Land
-  State Parks and Recreation
-  State Wildlife Reserve/Management Area
-  Other State
-  Tribal Lands



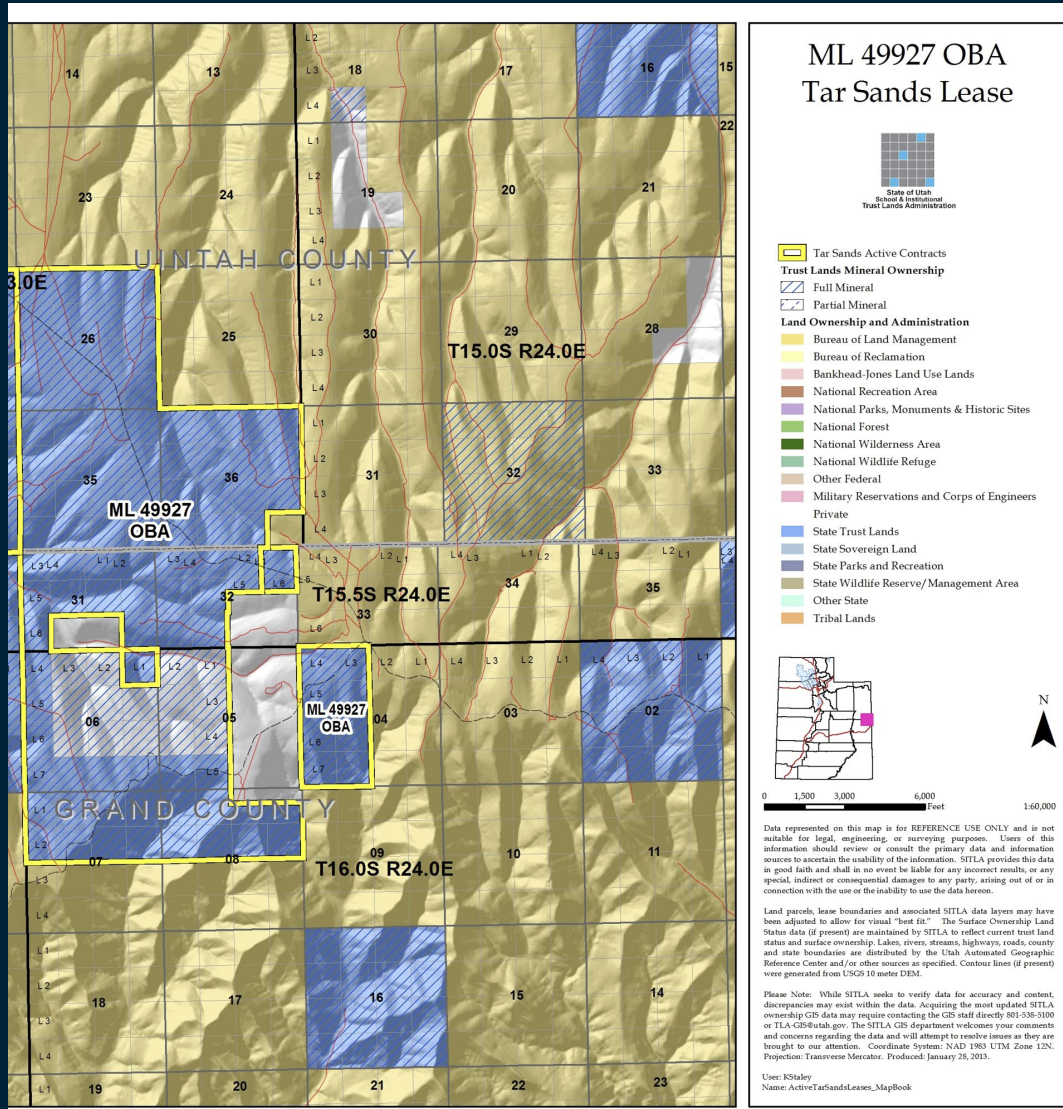
Data represented on this map is for REFERENCE USE ONLY and is not suitable for legal, engineering, or surveying purposes. Users of this information should review or consult the primary data and information sources to ascertain the usability of the information. SITLA provides this data in good faith and shall in no event be liable for any incorrect results, or any special, indirect or consequential damages to any party, arising out of or in connection with the use or the inability to use the data hereon.

Land parcels, lease boundaries and associated SITLA data layers may have been adjusted to allow for visual "best fit." The Surface Ownership Land Status data (if present) are maintained by SITLA to reflect current trust land status and surface ownership. Lakes, rivers, streams, highways, roads, county and state boundaries are distributed by the Utah Automated Geographic Reference Center and/or other sources as specified. Contour lines (if present) were generated from USGS 10 meter DEM.

Please Note: While SITLA seeks to verify data for accuracy and content, discrepancies may exist within the data. Acquiring the most updated SITLA ownership GIS data may require contacting the GIS staff directly 801-338-5100 or TLA-GIS@utah.gov. The SITLA GIS department welcomes your comments and concerns regarding the data and will attempt to resolve issues as they are brought to our attention. Coordinate System: NAD 1983 UTM Zone 12N. Projection: Transverse Mercator. Produced: January 28, 2013.

User: KStaley  
Name: ActiveTarSandsLeases\_MapBook

# 2020 Resources Tar Sands Processing



# 2020 Resources Tar Sands Processing



The background of the slide is a photograph of the interior of Antelope Canyon. The walls are made of smooth, undulating sandstone that has been eroded into flowing, wave-like patterns. The lighting is dramatic, with warm orange and red tones in the center, transitioning to deep purples and blues towards the edges and shadows. The overall effect is one of natural beauty and depth.

# **Terms of the OBA**

# OBA Terms

## Extension

**Lease will extend to January 31, 2030**

## Paid Up Bonus

**Lessee will pay TLA \$432,000**

## Amended Royalty Rate

**Royalty will increase to 10%**

## Produce to Earn

**2020 Resources has agreed to a produce to earn clause that prohibits any new disturbance until exposed Hydrocarbon has been produced**



# Benefits to TLA

- Hydrocarbon in TLA Tar Sands deposits is prevalent
- Large bonus payment
- Plant is nearly operational
- Produce to earn clause protects TLA's interest



**“I move to approve the Amendment and Extension of ML 49927 on the terms set forth in the Memorandum and to have the agency take all further actions necessary to finalize the transaction.”**