



PUBLIC WORKS
OPERATIONS

Emigration Canyon Pavement Management

August 2025

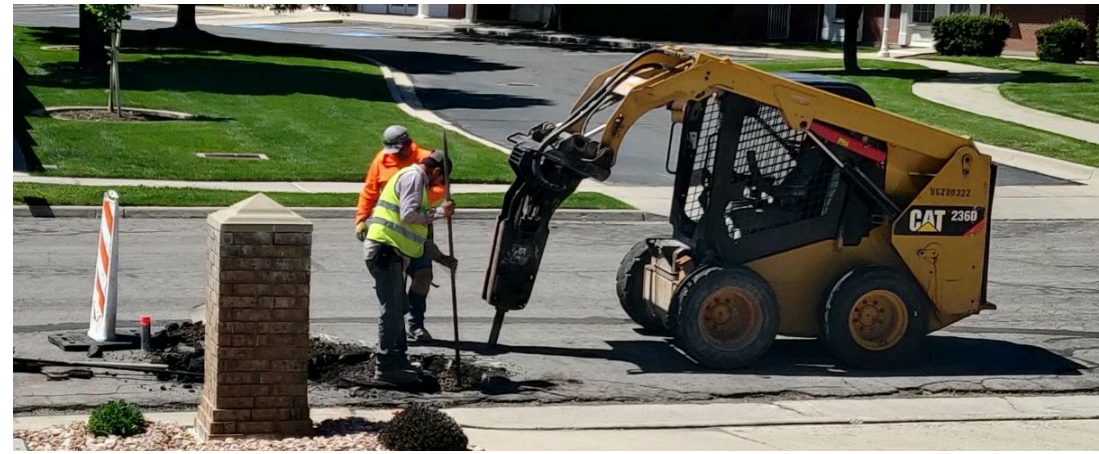


EMIGRATION CANYON



Public Works Operations Provides the Following Services:

- Road inspections (3-year rotation)
- Data management
- Mill and overlays of asphalt surface (2")
- Repairs
 - Potholes
 - Crack sealing
 - Mastic patch
 - Asphalt patch
- Micropave (contracted)
- Slurry seals (contracted)



**SL SALT LAKE
COUNTY**
PUBLIC WORKS
OPERATIONS



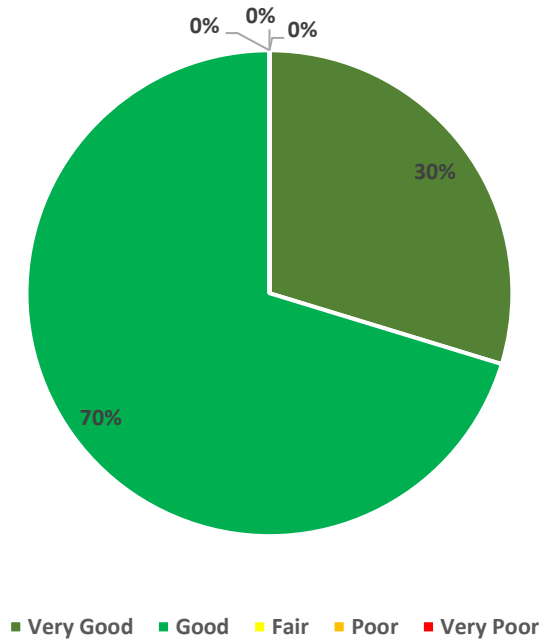
EMIGRATION CANYON

Pavement Preservation

	Very Good	Good	Fair	Poor	Very Poor	Total
Centerline Condition	30%	70%	0%	0%	0%	100%
Centerline Miles	5.47	7.49	0	0	0	12.95
Area Square Feet	522,624	1,236,114	0	0	0	1,758,739

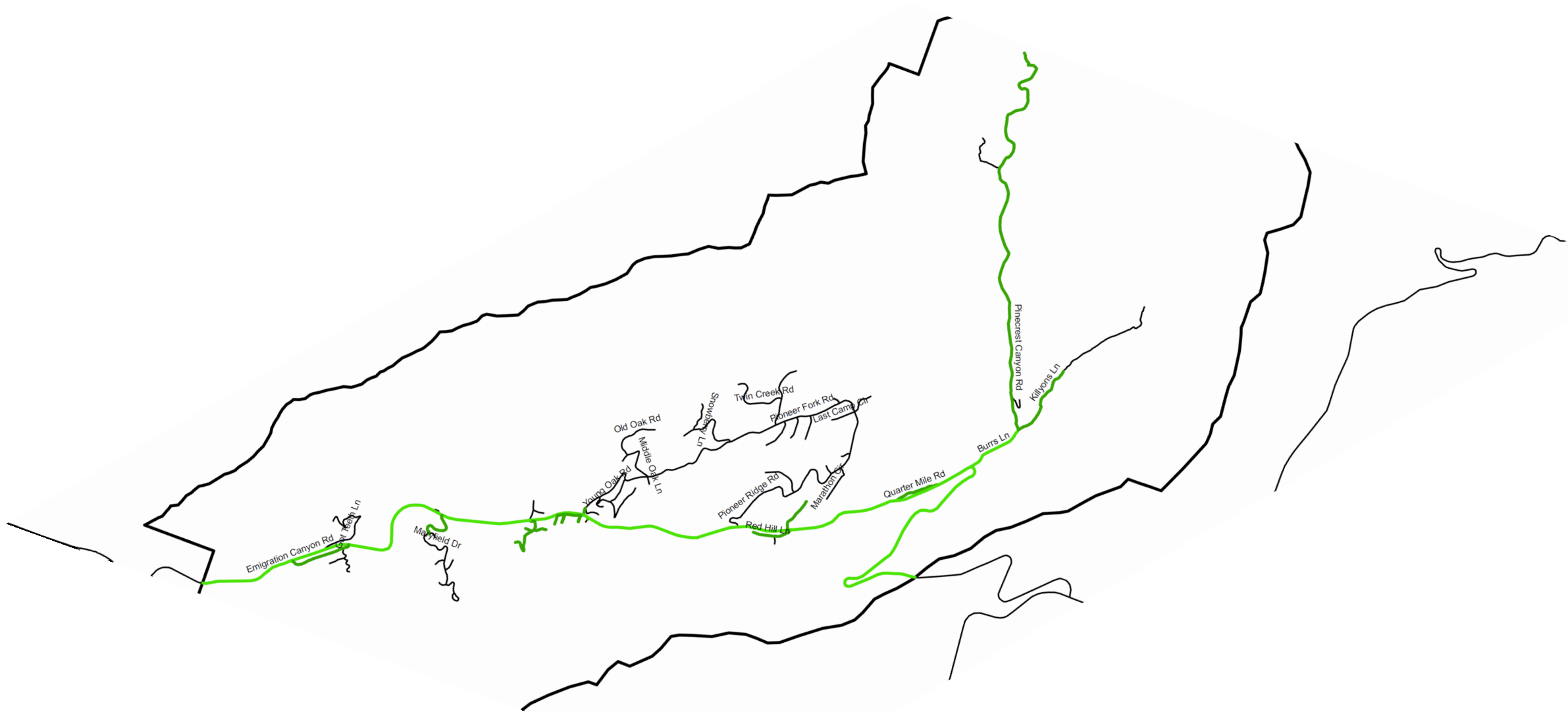
Average Road Segment OCI = 91.9

Emigration Pavement Condition



Emigration Current Condition





Emigration Current Condition



Budget Forecast Assumptions:

- Does not consider concrete improvements, asphalt maintenance only.
- Class B&C road fund allocations to jurisdiction set at 2024 allocations plus 3% annual growth (avg. statewide from past 5-yrs)
- Linear deterioration rate of asphalt vs. 20-yr service life
- Construction inflation of 6.5%
- Overlay available every ~ 6 years up to 200,000 SF if needed
- Assume treatment of Emigration Canyon Road altogether

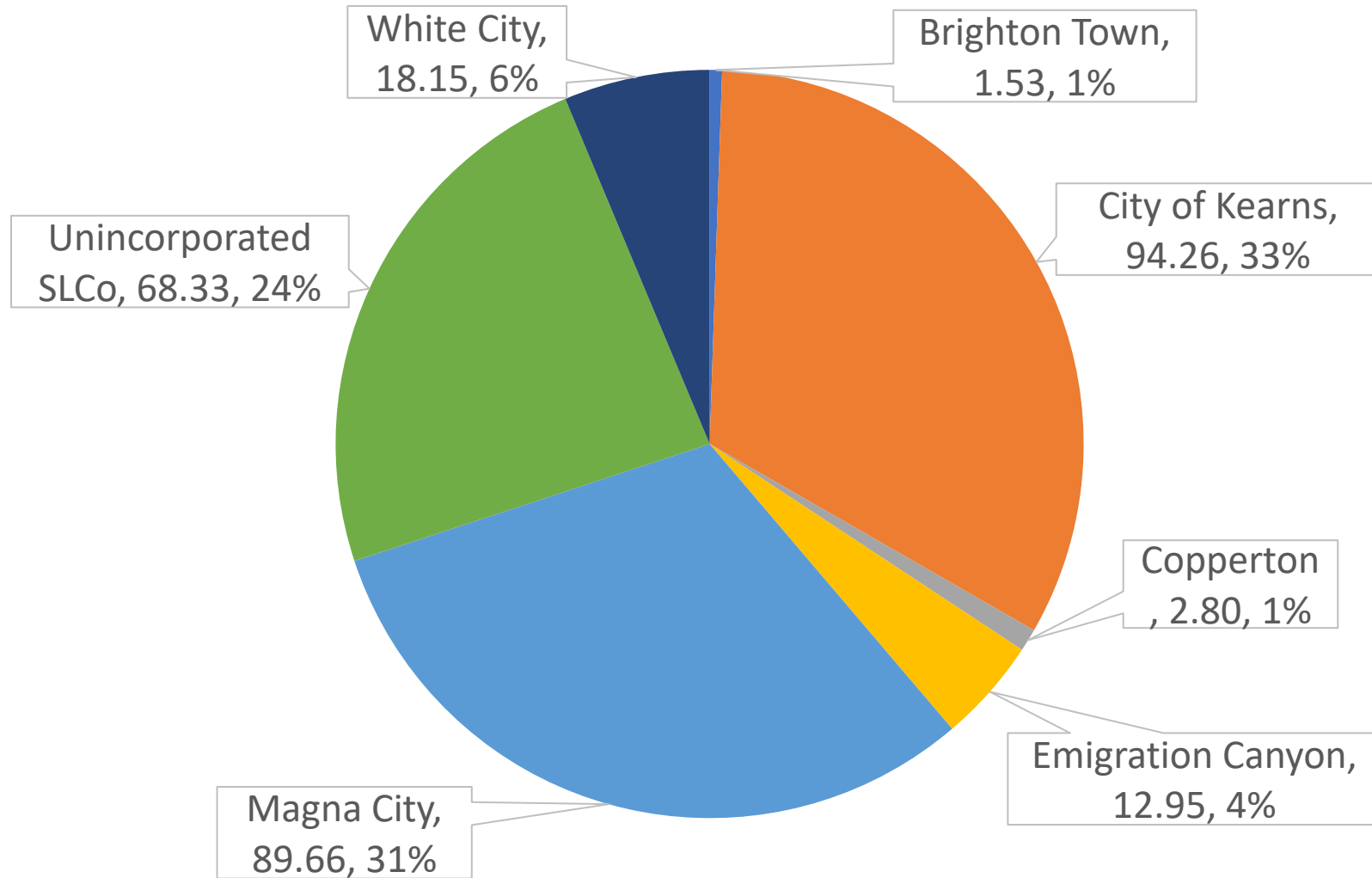


2025-2045 Budget Forecast

SL SALT LAKE
COUNTY
PUBLIC WORKS
OPERATIONS



EMIGRATION CANYON



GSLMSD Road Miles (July 2025)



Treatment Type	Minimum (yrs)	Average (yrs)	Maximum (yrs)
Thin (< 2.5-inch) Hot-Mix Asphalt (HMA) Overlay	2	8	12
Thick (≥ 2.5-inch) HMA Overlay	6	10	17
Single Chip Seal	1	6	12
Double Chip Seal	4	9	15
Thin (< 2.5-inch) Mill and Fill	4	8	20
Thick (≥ 2.5-inch) Mill and Fill	6	10	17
Cold-In-Place HMA Recycling	5	10	20
Crack Sealing	2	3	10
Microsurfacing	4	6	10

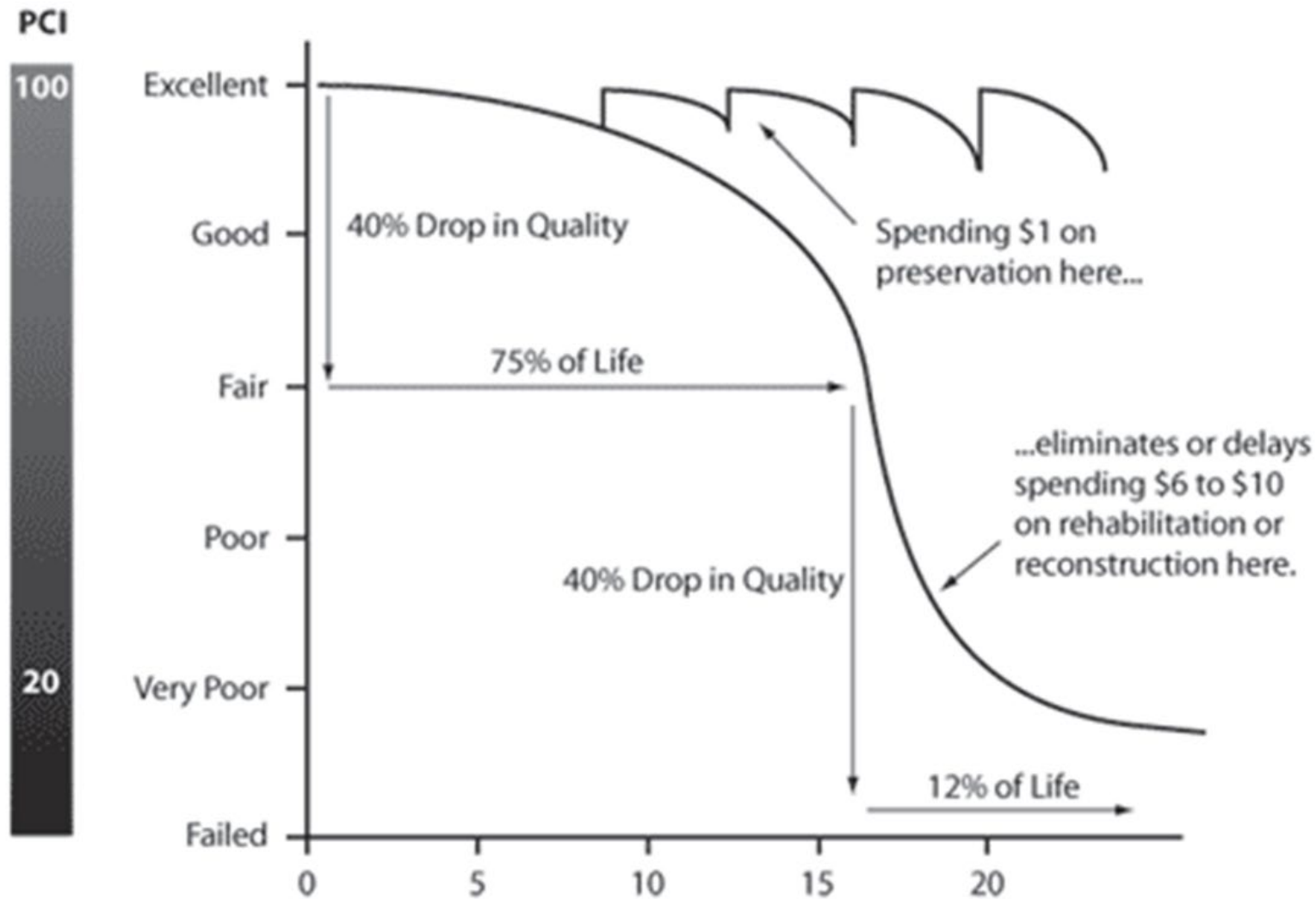
Source: Federal Highway Administration. (2017). *Pavement performance measures and forecasting and the effects of maintenance and rehabilitation strategy on treatment effectiveness (Revised)* (FHWA-HRT-17-095). U.S. Department of Transportation.

<https://www.fhwa.dot.gov/publications/research/infrastructure/pavements/ltp/17095/003.cfm>

Treatment Performance

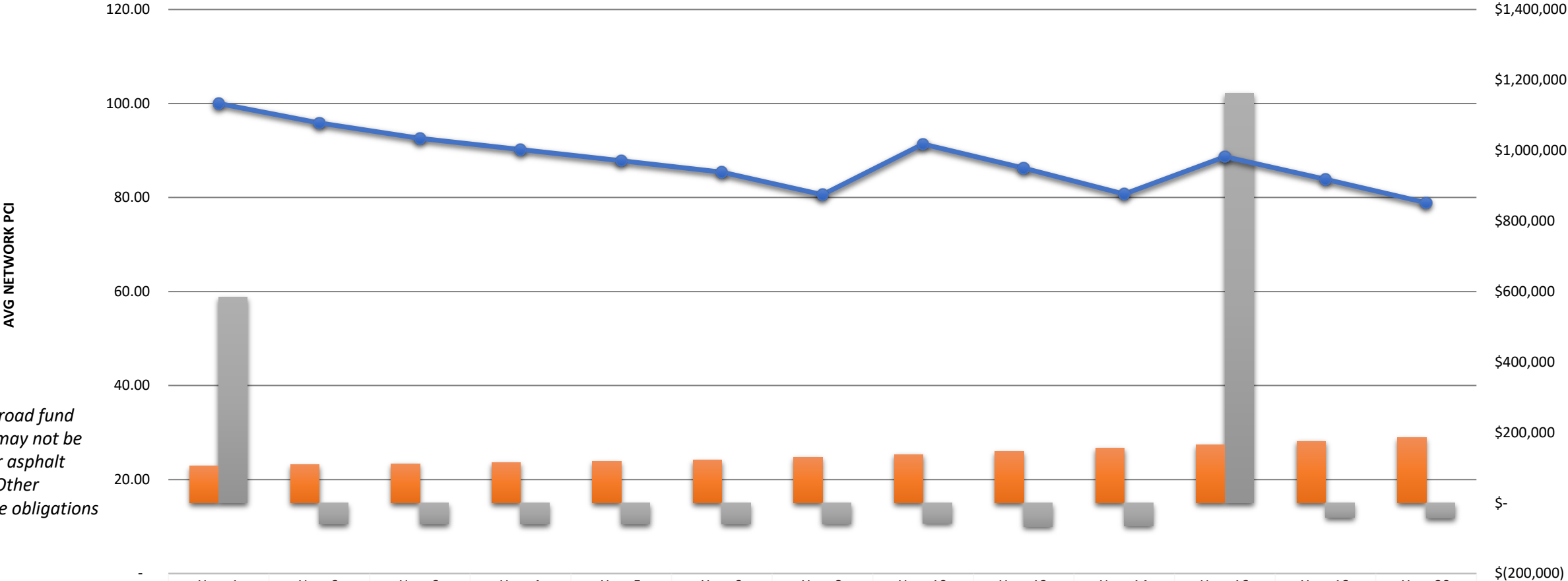


EMIGRATION CANYON



Pavement Preservation

Average PCI vs Budget



**All of B&C road fund allocations may not be available for asphalt treatment. Other maintenance obligations may exist.*

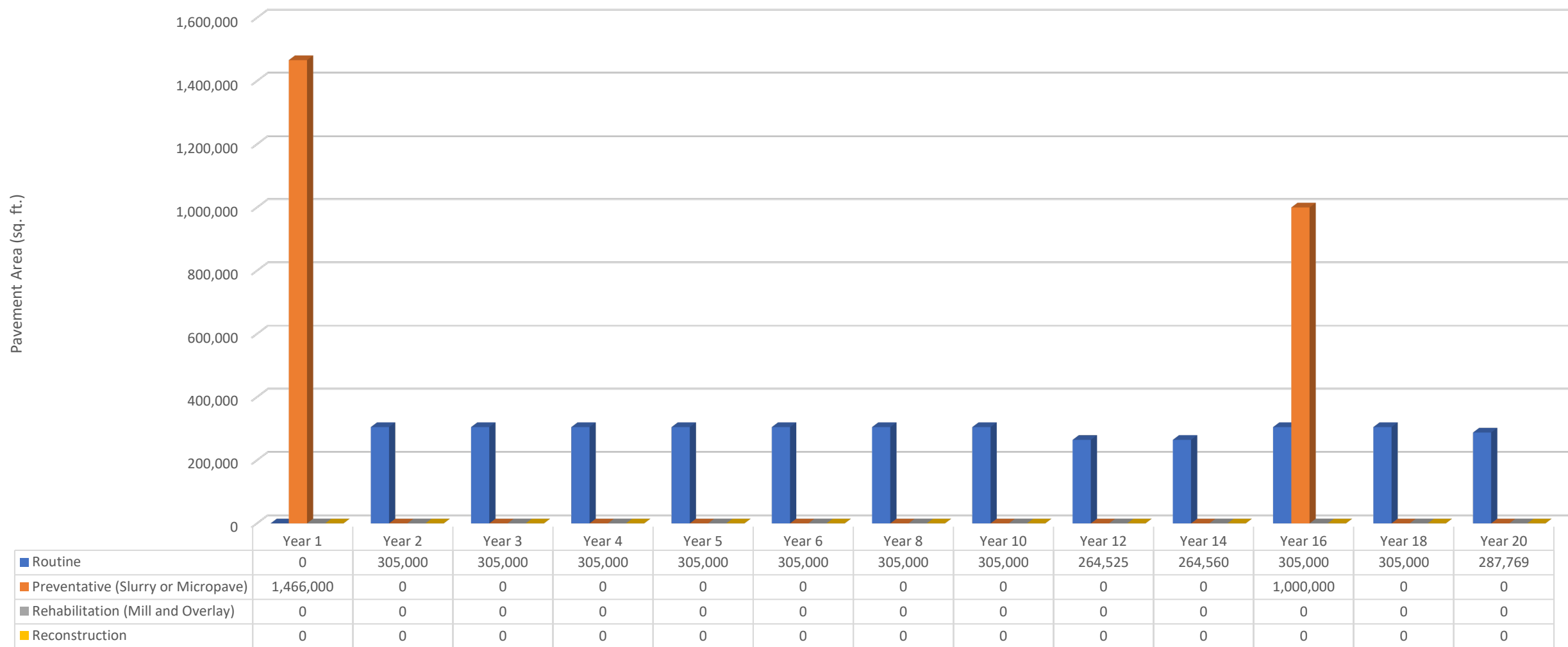
	Year 1	Year 2	Year 3	Year 4	Year 5	Year 6	Year 8	Year 10	Year 12	Year 14	Year 16	Year 18	Year 20
B & C Funding	\$105,000	\$108,194	\$111,486	\$114,878	\$118,373	\$121,974	\$129,509	\$137,509	\$146,004	\$155,023	\$164,599	\$174,767	\$185,563
Supplemental Funding Needed	\$584,020	\$(59,471)	\$(59,595)	\$(59,614)	\$(59,517)	\$(59,293)	\$(58,414)	\$(56,872)	\$(66,680)	\$(65,040)	\$1,161,828	\$(41,312)	\$(42,746)
Average PCI	100.00	95.87	92.60	90.21	87.81	85.41	80.61	91.39	86.24	80.74	88.69	83.87	78.90

2025-2045 Budget Forecast



EMIGRATION CANYON

Pavement Treatment Area by Type(sq. ft.)

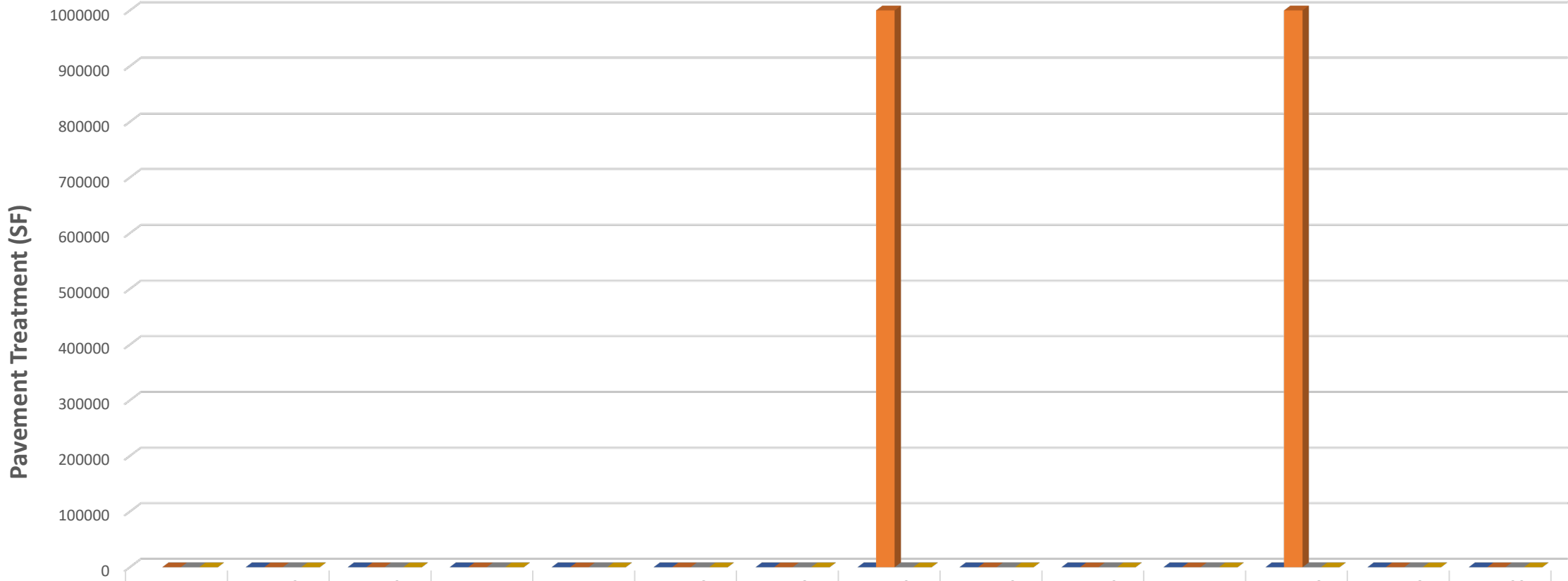


2025-2045 Budget Forecast



EMIGRATION CANYON

Supplemental Pavement Maintenance by Type



	Year 1	Year 2	Year 3	Year 4	Year 5	Year 6	Year 8	Year 9	Year 10	Year 12	Year 14	Year 16	Year 18	Year 20
Contract Routine Maintenance		0	0	0	0	0	0	0	0	0	0	0	0	0
Contract Preventative Maintenance	0	0	0	0	0	0	0	1000000	0	0	0	1000000	0	0
Contract Rehabilitation	0	0	0	0	0	0	0	0	0	0	0	0	0	0
Contract Reconstruction	0	0	0	0	0	0	0	0	0	0	0	0	0	0

2025-2045 Budget Forecast



EMIGRATION CANYON

- Emigration Canyon road network recently overlayed in past 5 years and general good condition. Preventative maintenance planned for 2025, routine maintenance recommended for next 6-8 years.
- Equilibrium of “good” condition achieved with 1/5th of road network receiving maintenance each year
- Supplemental preventative maintenance suggested in year 9, assumed to be larger treatment to capture Emigration Canyon road.

Model Takeaways



EMIGRATION CANYON

Interactive Web Map:

- Provide current pavement condition index (composite of 3-year data)
- Show planned Operations performed/managed:
 - Mill and Overlays (Red)
 - Micropave (Purple)
 - Slurry Seals (Blue)
- Includes recommended capital projects for MSD Engineering
 - Proposed (Orange)
 - Known funded capital projects (Green)

Link: [Operations Pavement Management Plan](#)

FY26-FY28 Pavement Plan

SL SALT LAKE
COUNTY
PUBLIC WORKS
OPERATIONS



EMIGRATION CANYON

QUESTIONS?



SL SALT LAKE
COUNTY
PUBLIC WORKS
OPERATIONS



EMIGRATION CANYON