

Data Privacy at USBE

USBE Study Session | August 2025



Thank you for your
stewardship!

8 Things to Know

1. Nationally recognized
2. Dedicated staff
3. Controlled data sharing
4. Focused data minimization
5. Need-to-know access
6. Involvement in USIMS project
7. Privacy-minded staff
8. New training course



Public Education Data Systems

Making Sense of Education Data



Data Literacy

is the ability to read, understand, create, and communicate data as information. In education, data literacy empowers educators, administrators, and stakeholders to use data effectively to inform decisions, improve practices, and support student learning.

Organizing Data

Collection, management and quality assurance of data sets

Communicating with Data

Visualization, reporting and presentation of results

Analyzing Data

Understanding, evaluating and interpreting information

Taxonomy of Data Use Purposes

1. **Person-Centric:** Individual Verification
2. **System-Centric:** Operational Performance
3. **Accountability-Centric:** Compliance & Outcomes
4. **ROI / Program Evaluation:** Investment Impact
5. **Diagnostic / Improvement:** Root Causes and Cycles



1. Person-Centric Perspective



- **Focus:** Individual records
- **Uses:** Quality Assurance (QA), audits, teacher certification, transcript checks
- **Tools:** SIS, ESS/Vantage, Payroll, use case files
- **Limitation:** Not suitable for system evaluation

2. System-Centric Perspective

- **Focus:** System health, performance trends
- **Uses:** KPIs, benchmarking, dashboards
- **Tools:** Tableau, PowerBI, Excel, *Data Gateway*
- **Examples:** Teacher retention, student performance over time, Finance Performance



3. Accountability-Centric Perspective



- **Focus:** Meeting predefined standards
- **Uses:** School Accountability & ESSA, Title funding, public dashboards
- **Tools:** Monthly Allotment Memo, School Report Card, Accountability Indicators, Acadience Reading and Math, Risk-Ratings in Finance
- **Audience:** Local School Boards, School Leaders, legislators, federal reviewers

4. ROI / Program Evaluation Perspective

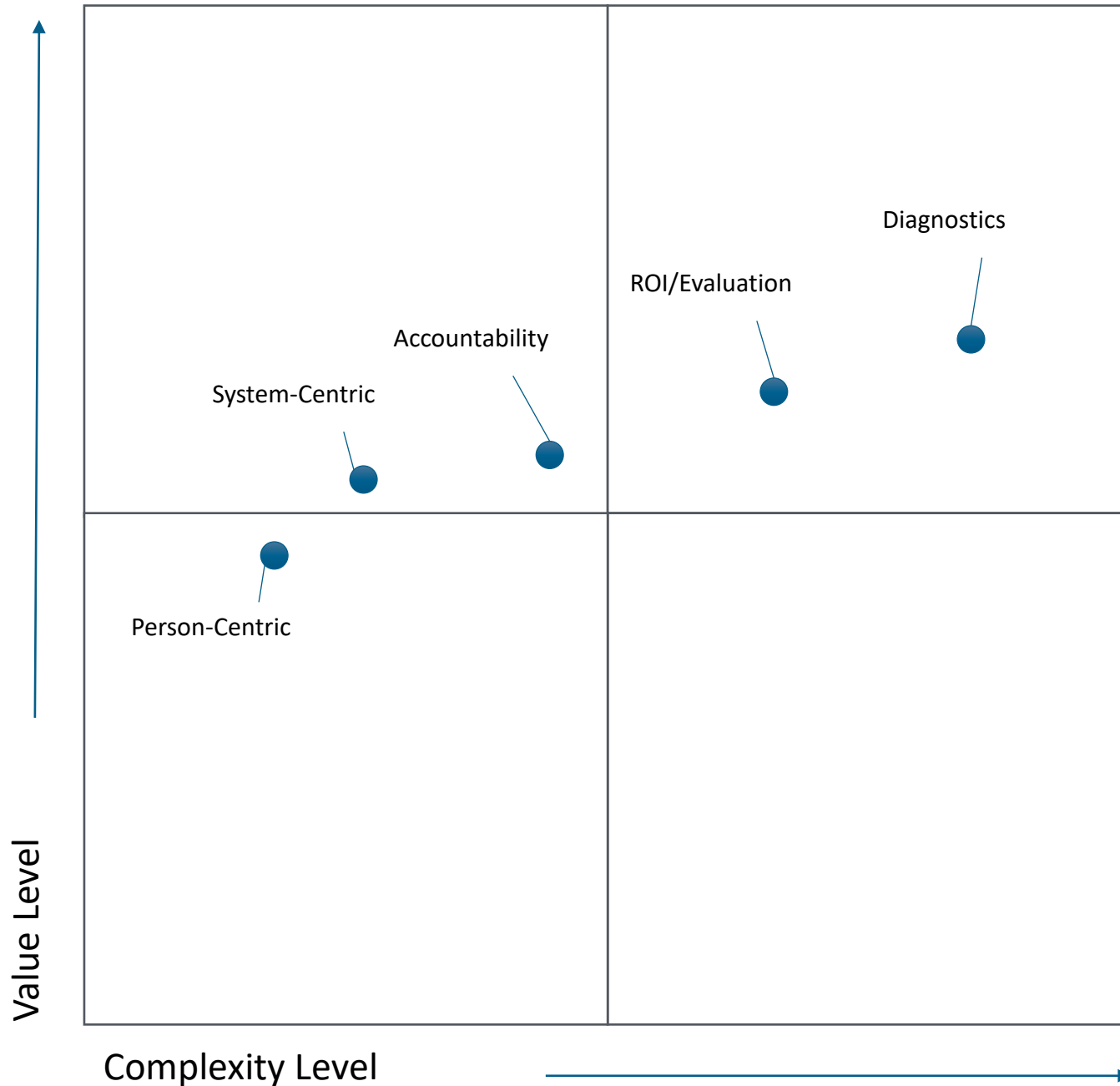
- **Focus:** Evaluating effectiveness and efficiency
- **Uses:** Program evaluation, theory of action testing
- **Tools:** Tableau, Machine Learning (ML), R, Python
- *Examples:* Tutoring program ROI, Teacher Merit Award



5. Diagnostic & Improvement Perspective



- **Focus:** Root cause analysis and implementation
- **Uses:** Continuous improvement, climate survey analysis
- **Tools:** Qualtrics, R, Python, Program evaluations
- *Examples:* MTSS fidelity, absenteeism trends



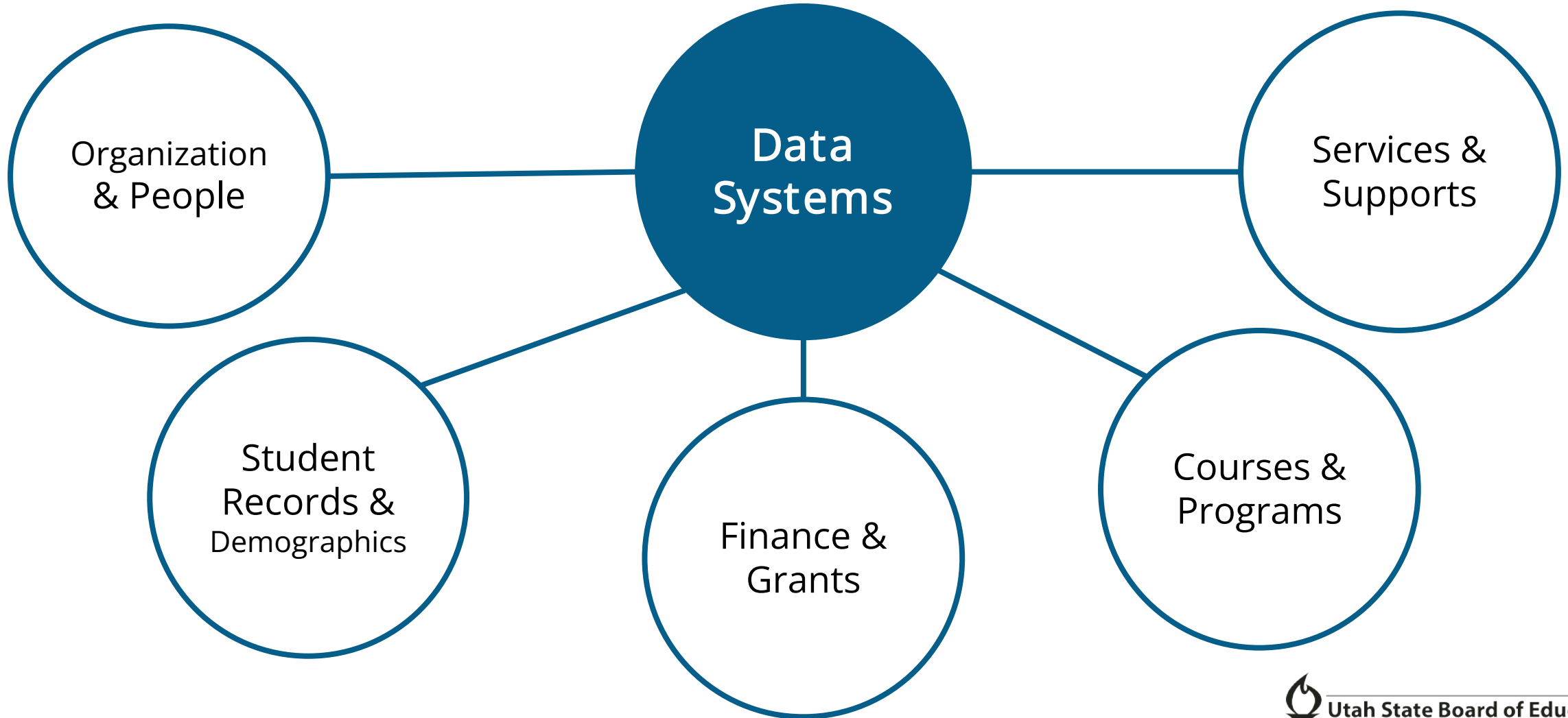
Data Value Matrix: Purpose, Impact, and Investment

Putting It All Together: A Unified Framework

- No single lens is sufficient alone
- Combine perspectives for robust insight
- Build from individual to systemic to strategic views



Education State System Data Domains



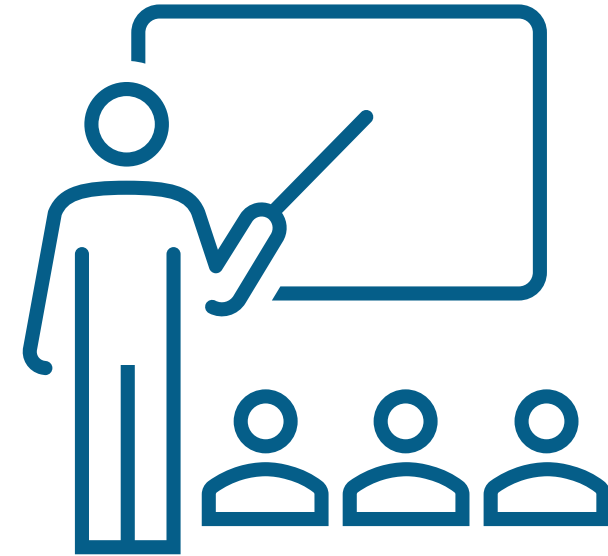
Organization & People

- LEA
- School
- Education Service Providers
- Teacher and Staff
- Licensing and Endorsements
- Assignment



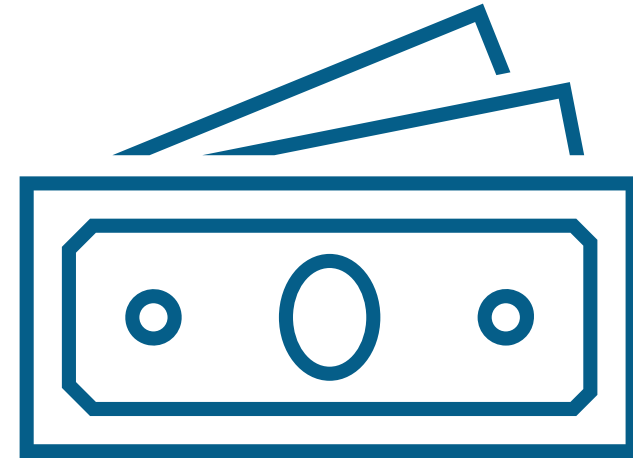
Student Records and Demographics

- Student Records
- Enrollment
- Demographics
- Attendance Type
- Absenteeism



Finance and Grants

- MSPA
- Utah Grants
- Financial Reporting/UPES



Courses and Programs

- Course Work
- Full Day Kindergarten
- CTE
- Personalize Competency Based Learning
- Extracurricular Activities



Services and Supports

- Early Warning System
- MTSS
- School Safety
- Other
 - IEP
 - English Learner
 - Free and Reduced Lunch
 - Foster Care



State Data Flow Process

Collecting Student Information – Daily

Districts collect student information through various sources such as registration forms, student records, and assessments, and attendance. This information includes demographic data, attendance, grades, and more is stored in LEA Student information System (SIS)

State Data Flow Process

LEAS submit records to UBSE via UTREX – Daily

- UTREx submission is a process in which a subsection of SIS data, in a summary or cumulative format, is sent to USBE and ensures the accuracy and completeness of the data by performing various checks and validations.
- Data are processed and used for state level learning and assessment platforms for things such as automated rostering

State Data Flow Process

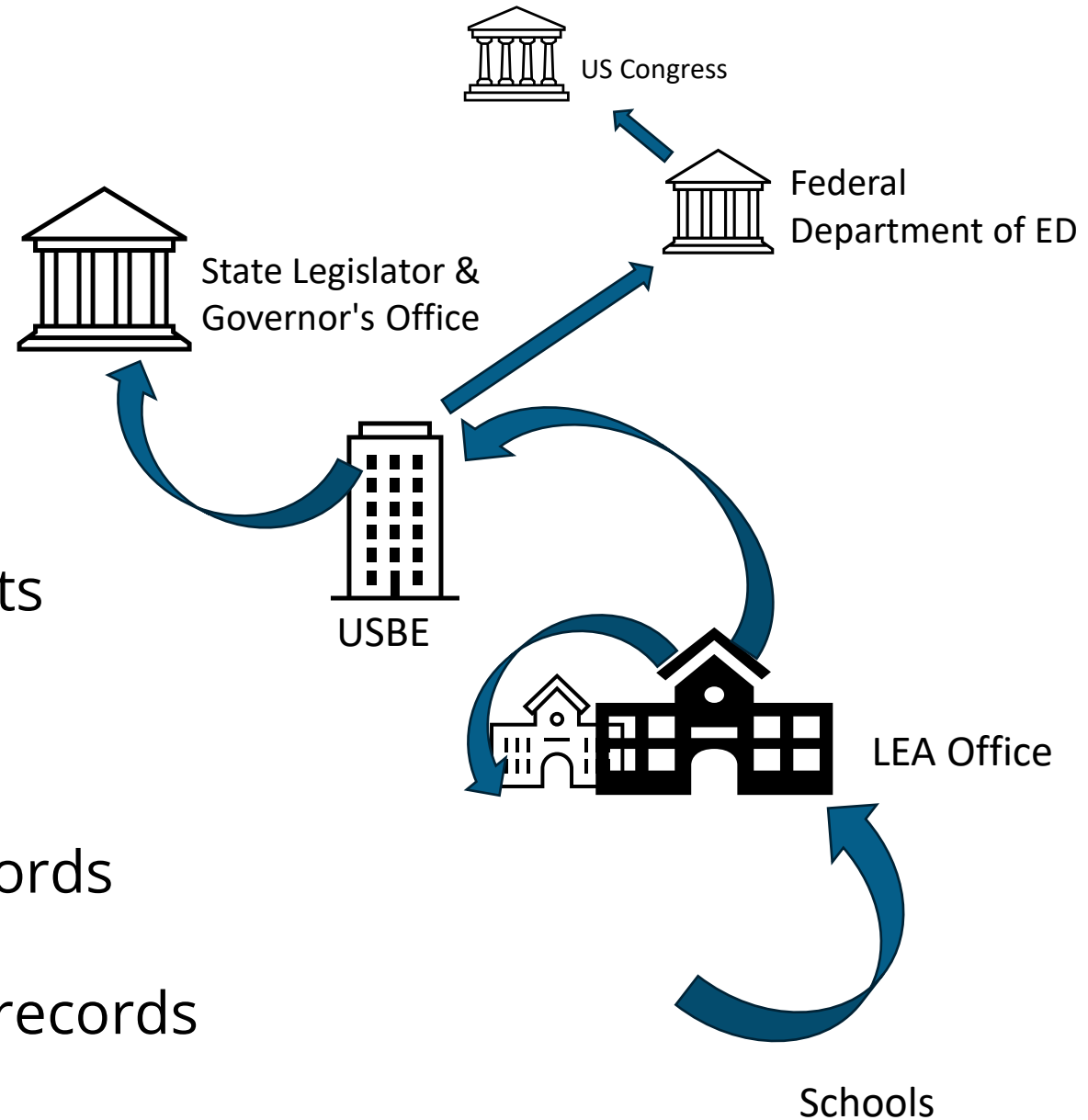
Certified Data Submission – 3 Times during the school year

Three finalized and certified as accurate submission are submitted by LEAs:

- Oct 1 – (No extensions) Funding, Populations, Graduation
- Dec 1 – Special Education
- End of Year – Finalized Year's dataset

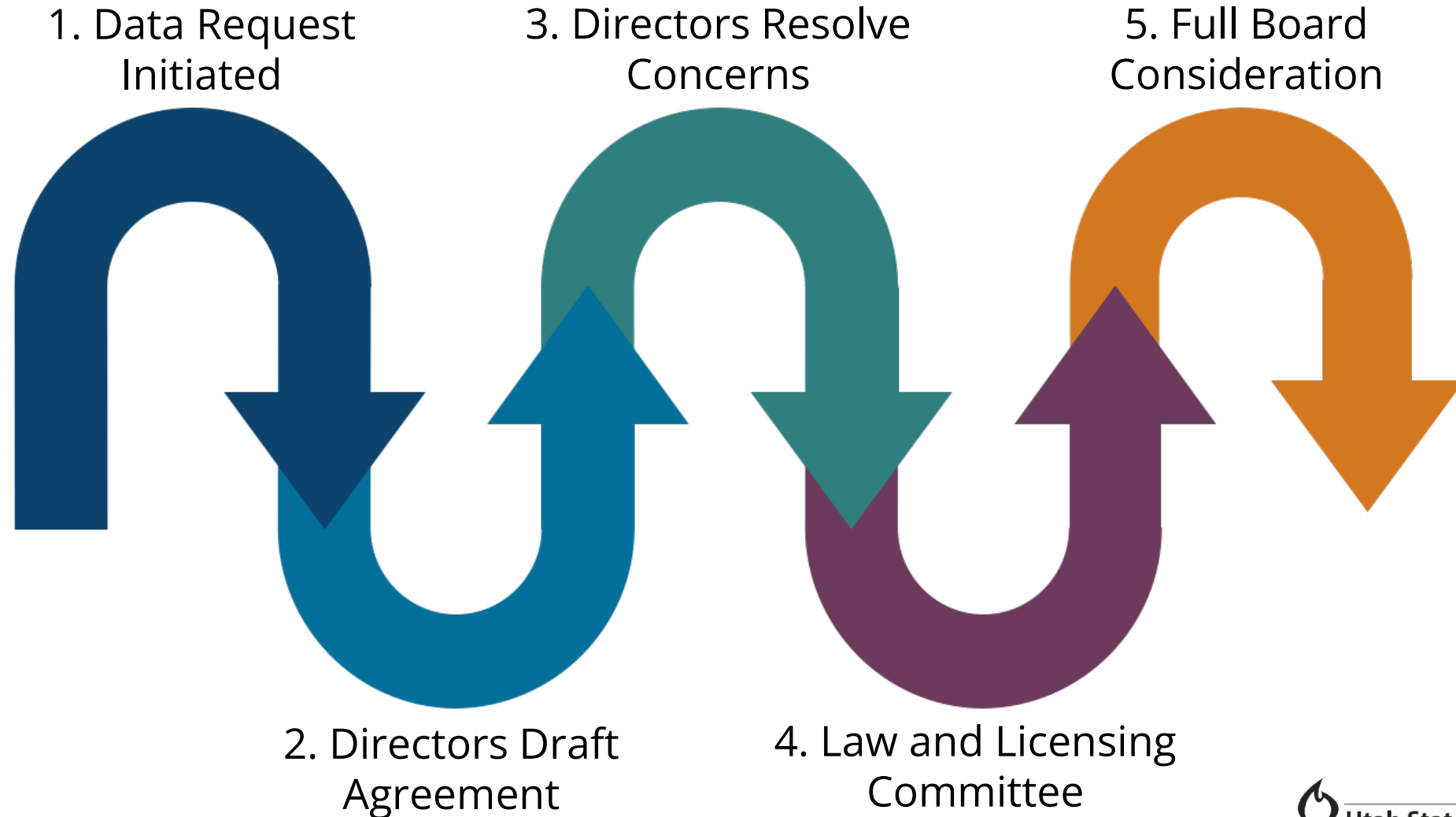
This information is used by USBE to populate funding formulas, evaluate programs, report on Enrollment numbers, and calculate accountability systems to ensure compliance with state and federal regulations.

Data Flow



- Summative Aggregate Reports
- Aggregated Counts records
- Summative student level records
- Detailed day-to-day student records

Data Sharing Agreements



Conclusion

The Public School System is a complex network that relies on accurate and secure data. The State Data Flow Process is a critical component of the system that ensures quality data, funding allocation, and regulatory compliance. Data security and privacy are also critical concerns that must be addressed to protect Personally Identifiable Information.

