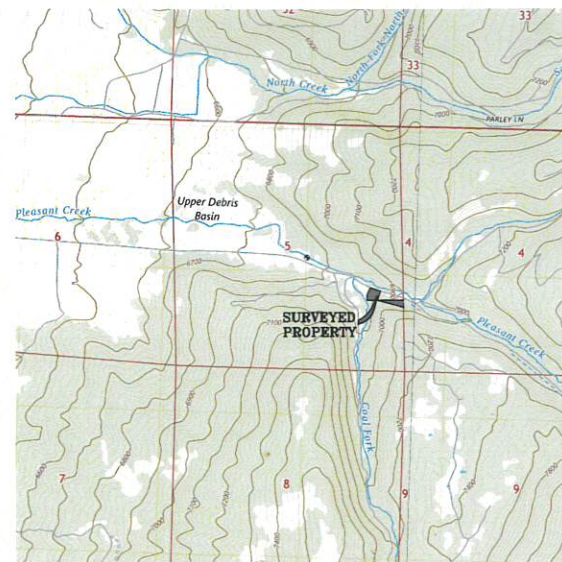
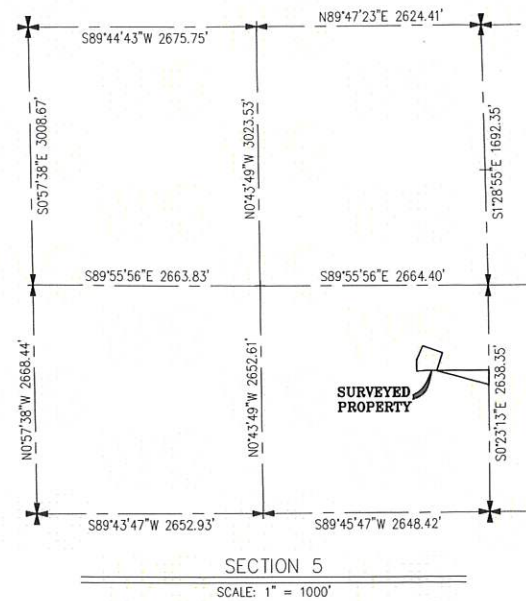


# Mt. Pleasant City and Stewardship Ranches Boundary Establishment

Located in Section 5, Township 15 South, Range 5 East, Salt Lake Base and Meridian,  
Sanpete County, Utah, 2025



LEGEND	
	BOUNDARY LINE
	DEED LINES
	SECTION LINE
	QUARTER SECTION LINE
	40 ACRE LINE
	PUBLIC UTILITY EASEMENT
	SET ORANGE PLASTIC CAP
	STAMPED SUNRISE ENGINEERING
	SECTION CORNER AS NOTED
	QUARTER CORNER AS NOTED



© 2025 Microsoft Corporation © 2025 Maxar ©CNES (2025) Distribution Airbus DS

**PRELIMINARY**



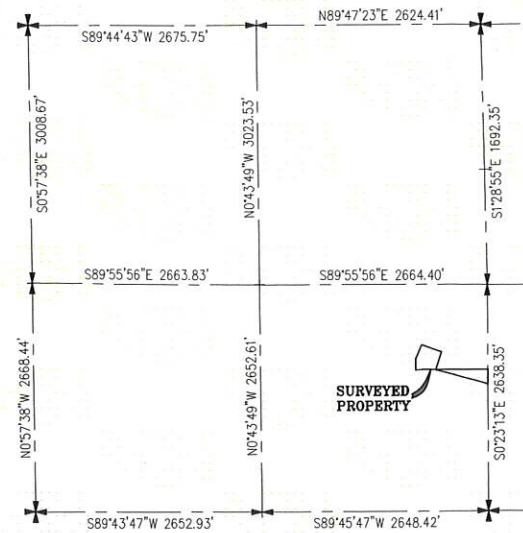
Record of Survey for Mt. Pleasant City  
and Stewardship Ranches

SET NO.	SURVEYED	DRAWN	CHECKED	SHEET NO.	SCALE
S0000.000	R.P.	R.R.M.	J.T.S.	1 of 1	1" = 150'

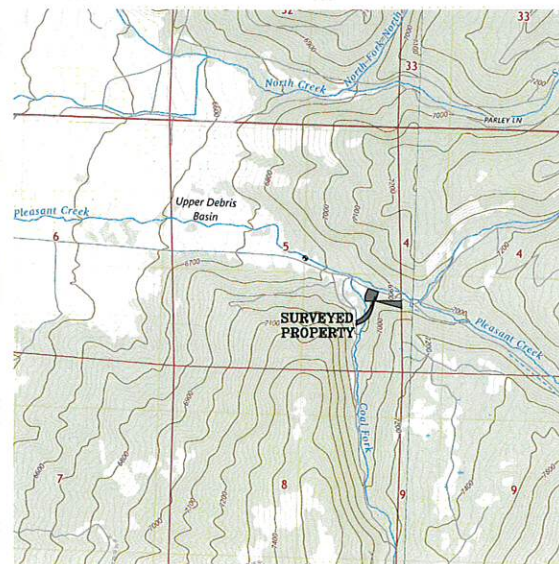


# Mt. Pleasant City and Stewardship Ranches Boundary Establishment

Located in Section 5, Township 15 South, Range 5 East, Salt Lake Base and Meridian,  
Sanpete County, Utah, 2025



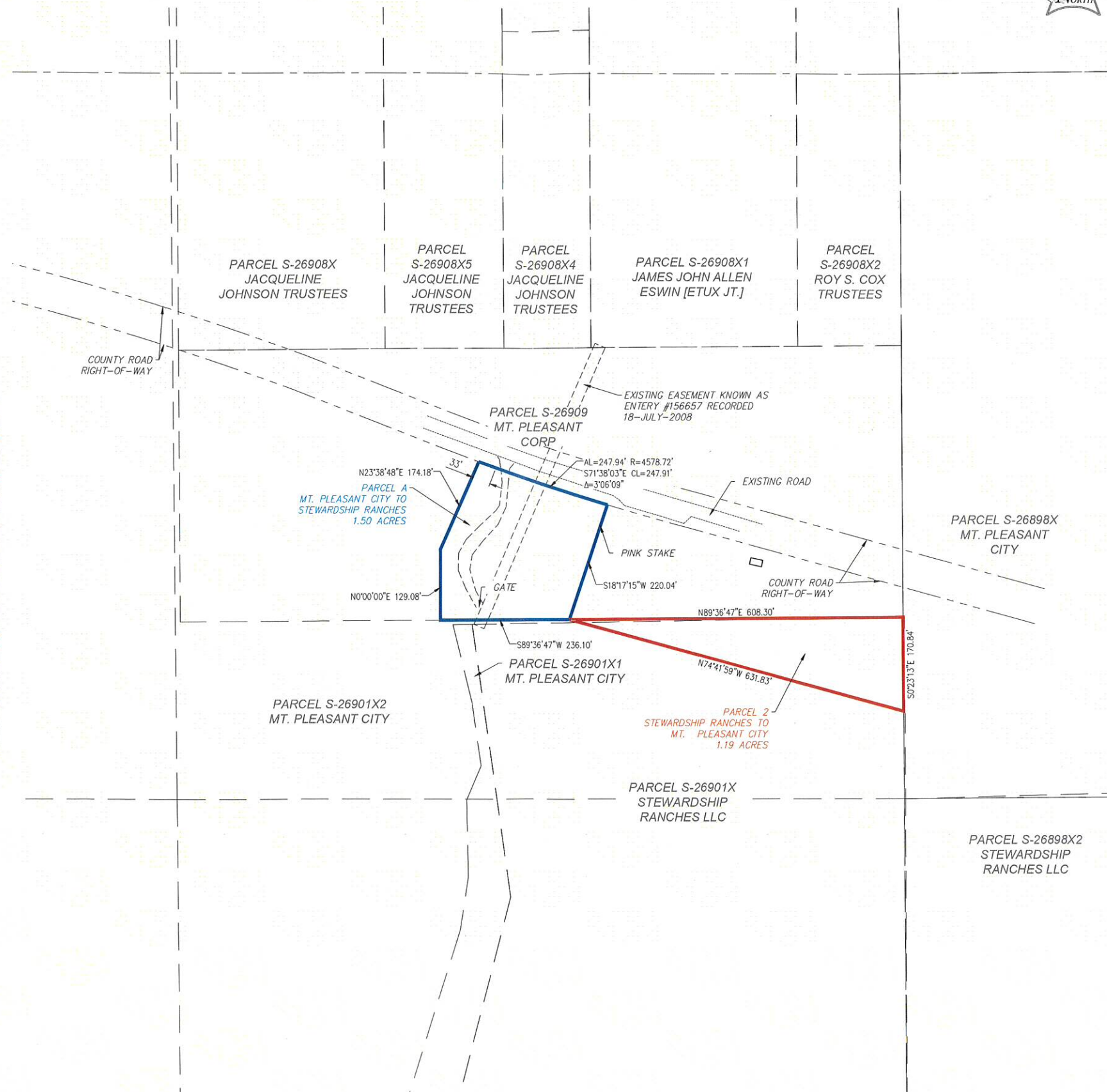
SECTION 5  
SCALE: 1" = 1000'



VICINITY MAP  
NOT TO SCALE

## LEGEND

- BOUNDARY LINE
- DEED LINES
- SECTION LINE
- QUARTER SECTION LINE
- 40 ACRE LINE
- PUBLIC UTILITY EASEMENT
- SET ORANGE PLASTIC CAP  
STAMPED SUNRISE ENGINEERING
- SECTION CORNER AS NOTED
- QUARTER CORNER AS NOTED



**PRELIMINARY**

**SUNRISE  
ENGINEERING**

25 EAST 500 NORTH  
FILLMORE, UTAH 84631  
TEL 435.743.6151 • FAX 435.743.7900  
www.sunrise-eng.com

Record of Survey for Mt. Pleasant City  
and Stewardship Ranches

SET NO.	SURVEYED	DRAWN	CHECKED	SHEET NO.	SCALE
S0000.000	R.P.	R.R.M.	J.T.S.	1 of 1	1" = 150'