



Pacific Power  
Rocky Mountain Power



## Spanish Fork to Mercer

### 345kV Transmission Project

[www.pacificorp.com/transmission/transmission-projects/spanish-fork-to-mercer](http://www.pacificorp.com/transmission/transmission-projects/spanish-fork-to-mercer)



1

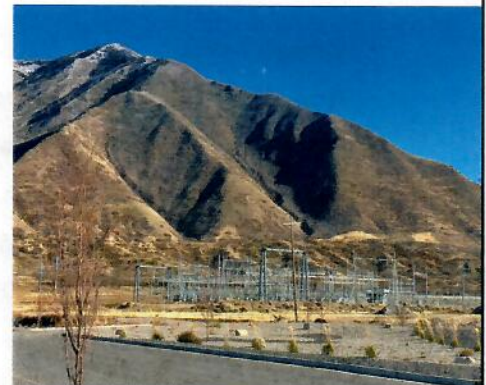


Pacific Power  
Rocky Mountain Power

## Project Overview

### Rocky Mountain Power:

- Proposing to construct, operate, and maintain a new 45-mile-long overhead, 345 kilovolt (kV) transmission line in southern Utah Valley between the existing Spanish Fork Substation and the Mercer Substation near Eagle Mountain.
- Conducted a routing study to identify, analyze, and compare alternative routes.
- Presented the most reasonable and feasible routes to the community before selecting a preferred route for permitting and construction.



2



Pacific Power  
Rocky Mountain Power

## Project Need

### Improve Reliability and Efficiency

- Establish an additional transmission path to enhance the reliability and resiliency of the electric system.
- Reduce the risk of outages and congestion.

### Increase Capacity and Flexibility

- Allow more power to be transmitted over longer distances.
- Address the region's growing demand for electricity effectively.

### Support Renewable Energy Integration

- Enable the delivery of power from renewable energy sources to customers.
- Contribute to the reduction of greenhouse gas emissions and decrease dependence on fossil fuels.



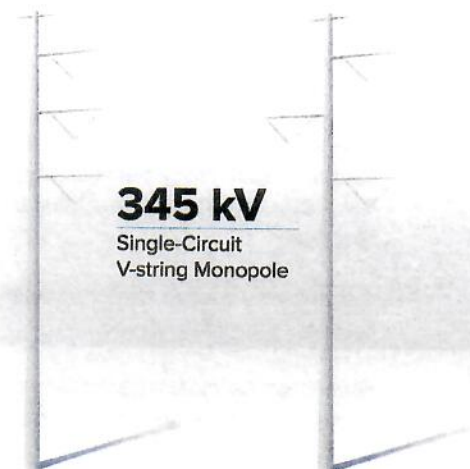
3



Pacific Power  
Rocky Mountain Power

## Project Description

- **Voltage:** 345 kV
- **Type of structure:** Steel monopole
- **End points:** Spanish Fork Substation and Mercer Substation
- **Length:** Approximately 48 miles
- **Height of monopoles:** 90 to 135 feet
- **Span between monopoles:** 600 to 800 feet
- **Right-of-way width:** 125 feet



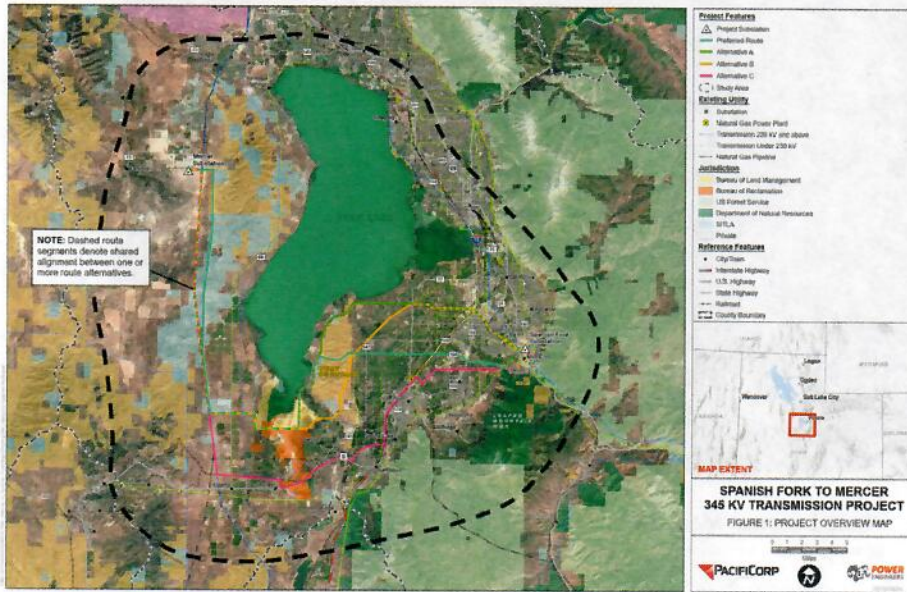
4



## Map Overview with Alternative Routes



Pacific Power  
Rocky Mountain Power



5

## 8800 South Alternative

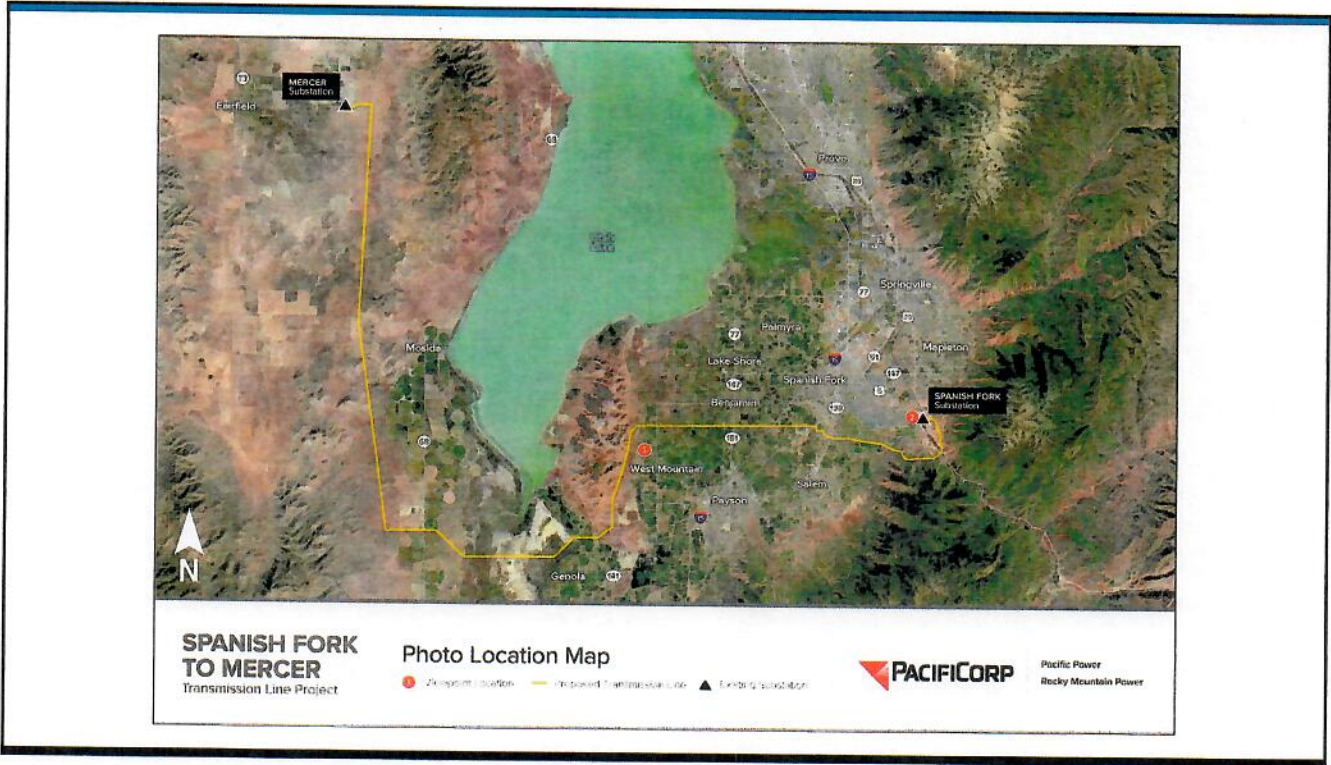


Pacific Power  
Rocky Mountain Power

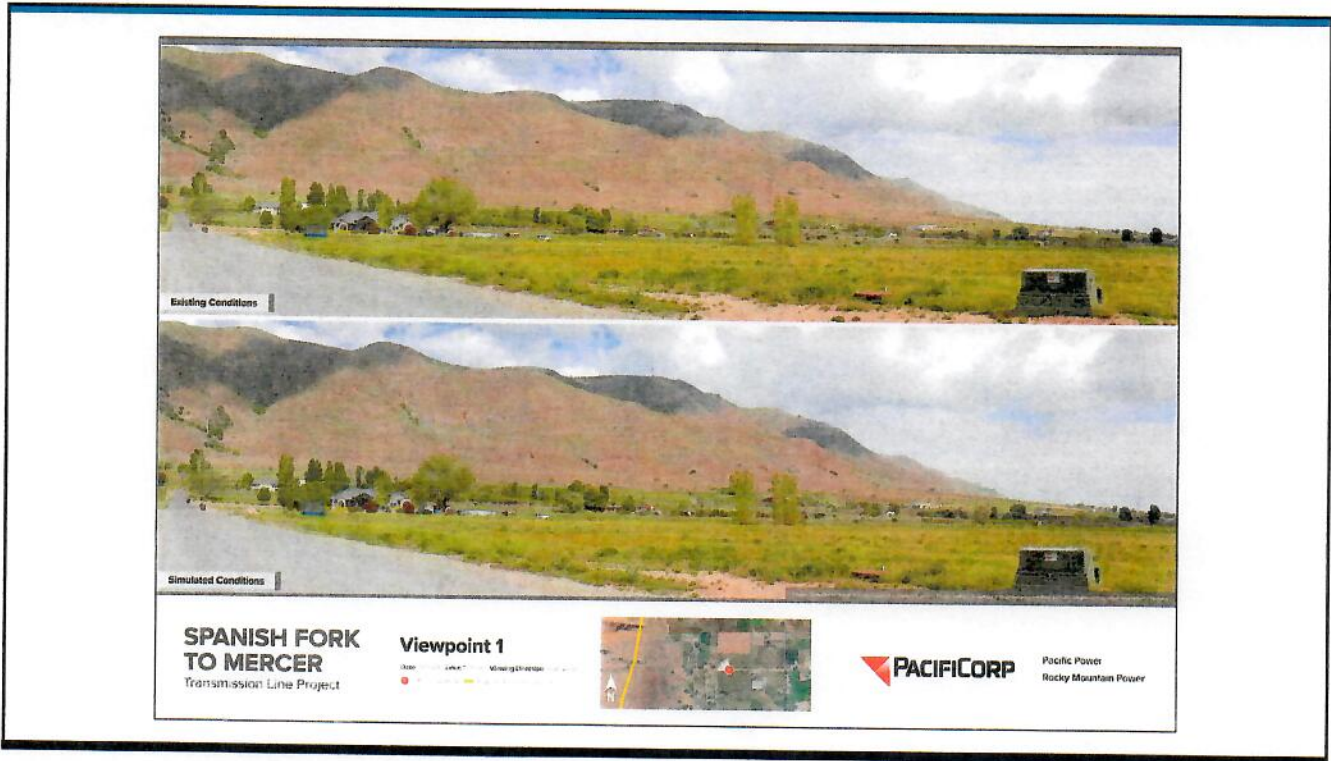


6





7




8





9


Pacific Power  
Rocky Mountain Power

## Compliance with Utah State Code

*This Project is subject to compliance with Utah State Code – Title 54, Chapter 18 – Siting of High Voltage Power Line Act. Chapter 18 of State Code outlines a required outreach and notification process with affected entities and property owners. The following meetings and other outreach requirements were held:*

- 1) 90-Day Notice of Intent letter to affected entities that have land use authority.
- 2) 60-day Notice of Intent letter to affected entities and property owners and other information including:
  - a. Website with contact information.
  - b. Notice in weekly newspaper of general circulation in each county for at least two weeks.
- 3) Notice of public workshop meetings mailed out. This included the following:
  - a. Mailed letters to potentially affected property owners.
  - b. A newspaper notice in a paper of general circulation.
  - c. Radio station announcements in the target area.

10

## Public Outreach and Engagement Briefings Late 2023-present



Pacific Power  
Rocky Mountain Power

Government	Utilities	Local Area Developers
U.S. Bureau of Land Management	Central Utah Water Conservancy District	DR Horton
U.S. Bureau of Reclamation	Southern Utah Valley Power Systems	Edge Homes
Utah Department of Natural Resources	Utah Association of Municipal Power Systems	Moderia
Mountainland Association of Governments	Utah Municipal Power Agency	
UDOT	South Utah Valley Electric Service District	
Utah State Trust Lands		
Utah County Planning and Public Works		
Mapleton City		
Payson City		
Salem City		
Santaquin		Other
Spanish Fork City		Conserve Utah Valley
Springville City		Provo Agricultural Commission
Goshen		
Genola		
Eagle Mountain		

11

## Public Open Houses



Pacific Power  
Rocky Mountain Power

PUBLIC OPEN HOUSE	DATE AND TIME	LOCATION	NUMBER OF ATTENDEES
Public Open House 1	June 18, 2024 5:30 to 7:30 p.m.	Goshen Senior Center 79 S Center Street Goshen, Utah	30
Public Open House 2	June 19, 2024 5:30 to 7:30 p.m.	Salem Junior High School Cafeteria 598 N Main Street Salem, Utah	22
Public Open House 3	June 20, 2024 5:30 to 7:30 p.m.	Spanish Fork Fairgrounds High Chaparral Room 475 S Main Street Spanish Fork, Utah	31
Public Open House 4 (Virtual)	June 25, 2024 5:30 to 6:30 p.m.	Virtual (Zoom Webinar)	55
Public Open House 5	July 15, 2024 5:30 to 7:30 p.m.	Genola Fire House 455 N Main St. Genola, Utah	130
TOTAL			268

12



## Key Themes of Open House Comments

- Proximity of the transmission line to their properties
- Potential effects of the presence of the transmission lines on property values.
- Potential effects on livestock and agricultural operations
- Aesthetic/visual effects of the transmission line
- Why the proposed location of the line was selected rather than an alternative location



13

## Key Themes of Open House Comments

- Health and safety concerns related to transmission lines (e.g., potential effects of electric and magnetic fields)
- Potential environmental and wildlife impacts (e.g., hawks and artesian springs) near the transmission line
- Potential impact on historical nature of Project area



14



Pacific Power  
Rocky Mountain Power

## Project Milestones

