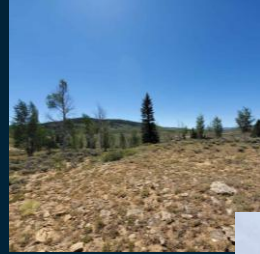


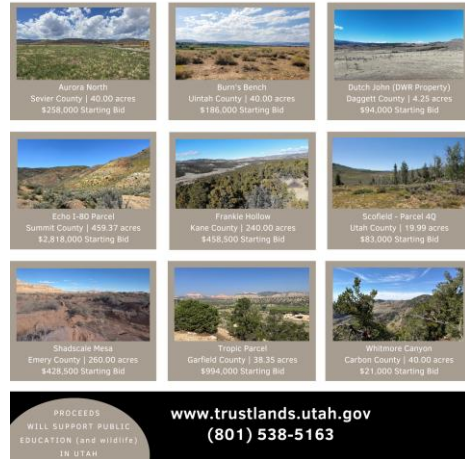
Trust Lands Administration

Land Sale Auction Results April and June 2025



TRUST LANDS
ADMINISTRATION

Auction Procedures



- Lands nominated (externally or internally)
- Usually remote with no improvements
- Internal management review - approval from Director
- Collection of earnest money from nominee
- Post on RDCC
- Appraisal
- Cultural Resources Survey
- Land Survey (if needed)
- Post on website with photos, video, map, etc.
- Advertising
- Auction conducted by Efficient Markets
- Bidders can choose automatic or manual bidding
- 10% down payment and closing costs paid
- Financing available – prime + 2.5% or 7.5% (whichever is greater)
- Patents prepared for those paid in full
- Quit claim deeds signed for those financing

April 24-29, 2025 Auction Results

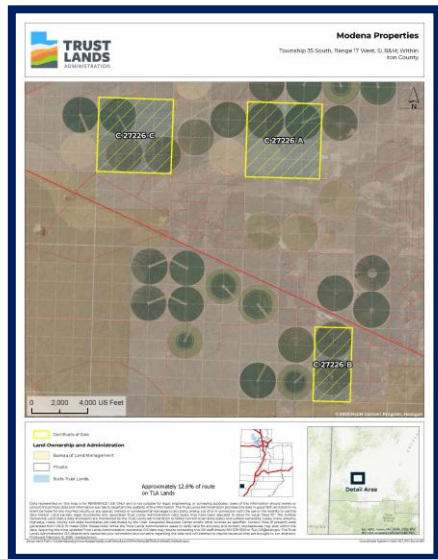
- Extra auction – request from petitioner
- All properties located in western Iron County
- All 4 properties sold
- Active bidding on 3 of the properties
- \$1,093,000 earned
- 1,645.27 acres sold



Modena Properties (3) | Iron County

Currently Leased for Agricultural Purposes

- Parcel A – 647.89 acres - \$356,500 minimum - \$380,500 sale price
- Parcel B – 320 acres - \$176,000 minimum - \$241,000 sale price
- Parcel C – 640.88 acres - \$352,500 minimum - \$402,500 sale price
- **Total earned - \$1,024,000**



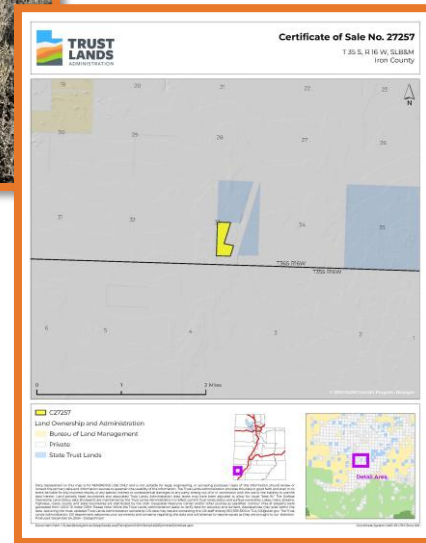
Parcel A – 2 bidders – 12 bids
Parcel B – 4 bidders – 24 bids
Parcel C – 2 bidders – 25 bids

West Beryl | Iron County | 36.50 Acres

Minimum Price \$69,000 | Sold for \$69,000



- Located in western Iron County, within the town of Beryl
- Near the rural airstrip
- 2nd of 3 properties created from this parcel



June 5-10, 2025 Auction Results

- 9 properties offered
- 4 properties sold
- 1 property in Daggett County offered on behalf of DWR – did not sell – offering again in November
- Several properties being offered again after not selling at previous auctions
- \$919,500 earned
- 339.99 acres sold



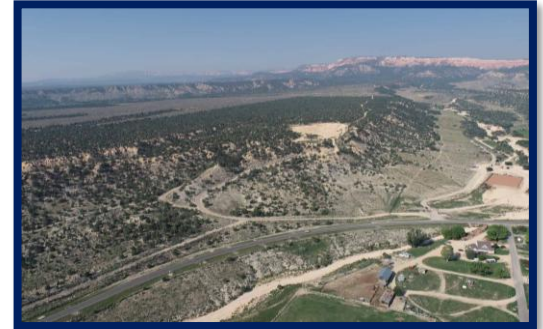
Aurora North
Sevier County - 40 acres
\$258,000 minimum



Echo I-80 Parcel
Summit County – 459.37 acres
\$2,818,000 minimum



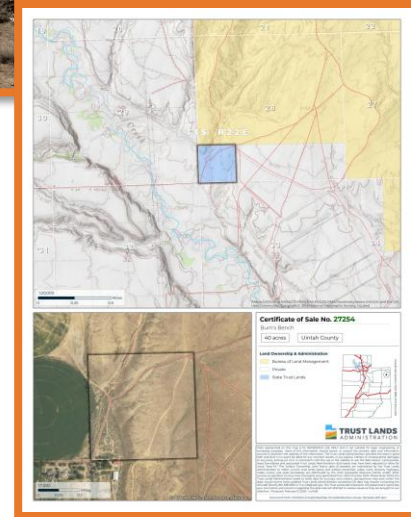
Shadscale Mesa
Emery County – 260 acres
\$428,500 minimum



Tropic Parcel
Garfield County – 38.35 acres
\$994,000 minimum

Burn's Bench | Uintah County | 40 Acres

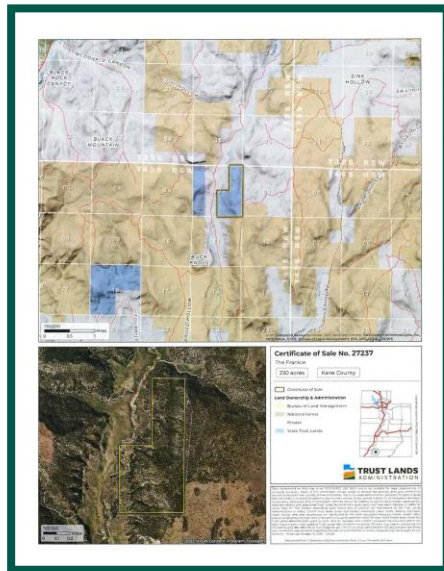
Minimum Price \$186,000 | Sold for \$186,000



- Located on a bench about 2 miles east of Vernal
- Good access and great views of the surrounding area
- 1 Bidder – 1 Bid

Frankie Hollow | Kane County | 240 Acres

Minimum Price \$458,500 | Sold for \$486,500

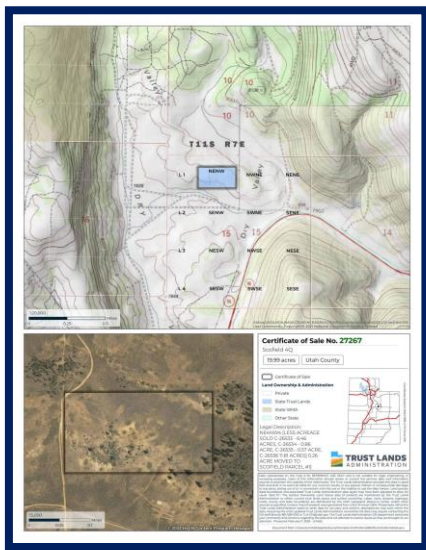


- 5 miles south of the town of Alton
- Access challenged – seasonal road
- 3 Bidders – 14 Bids



Scofield – Parcel 4Q | Utah County | 19.99 Acres

Minimum Price \$83,000 | Sold for \$176,000



- Recreation property – located 3.5 miles north of Scofield Reservoir
- Sold previously - forfeiture
- 4 Bidders – 51 Bids

Whitmore Canyon | Carbon County | 40 Acres

Minimum Price \$21,000 | Sold for \$71,000



- Remote, steep property (9,500 feet) (average slope 68%)
- 9 miles north of East Carbon
- Seasonal access
- 7 Bidders – 51 Bids

Any Questions?



SUPPORTING UTAH SCHOOLS AND INSTITUTIONS

