



HEALTH EDUCATION

Excelsior Academy

FRIDAY, MAY 7, 2021

BELLRINGER

- **Quote**

- **Question 1**

- **Question 2**

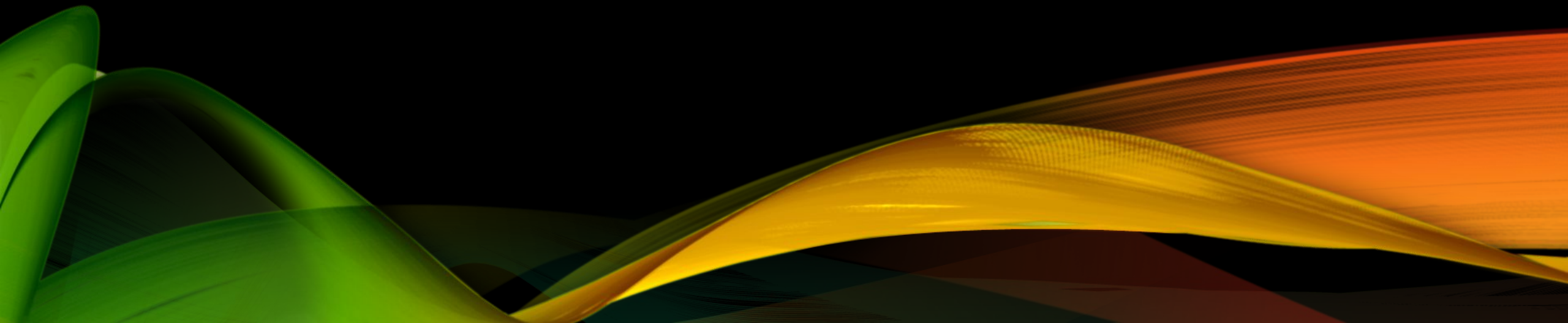
- **Question 3**

“

Students will be able to

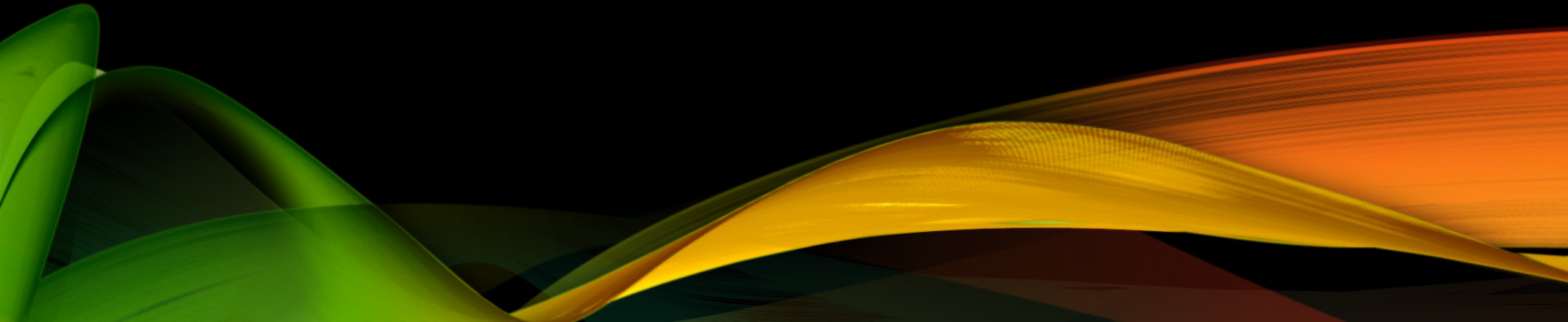
IDENTIFY THE SEQUENCE OF THE
MENSTRUAL CYCLE

”

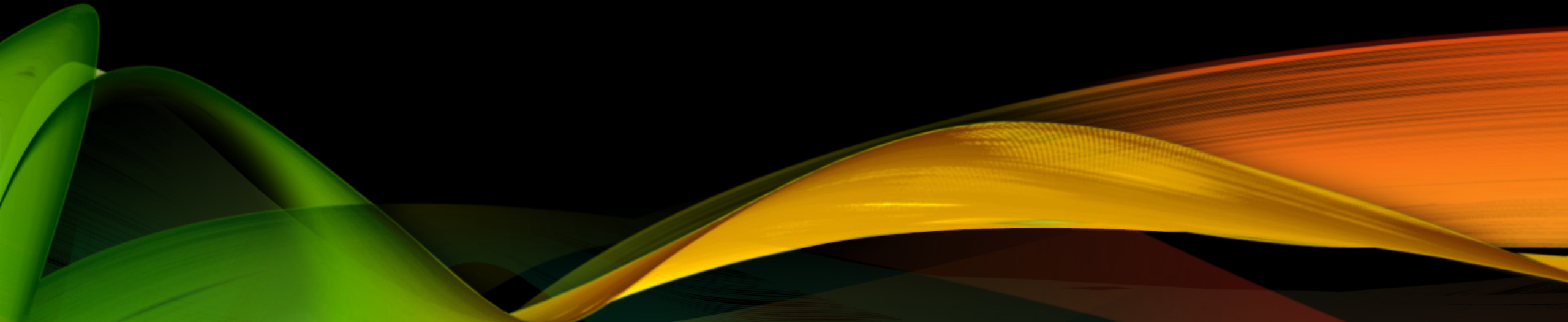


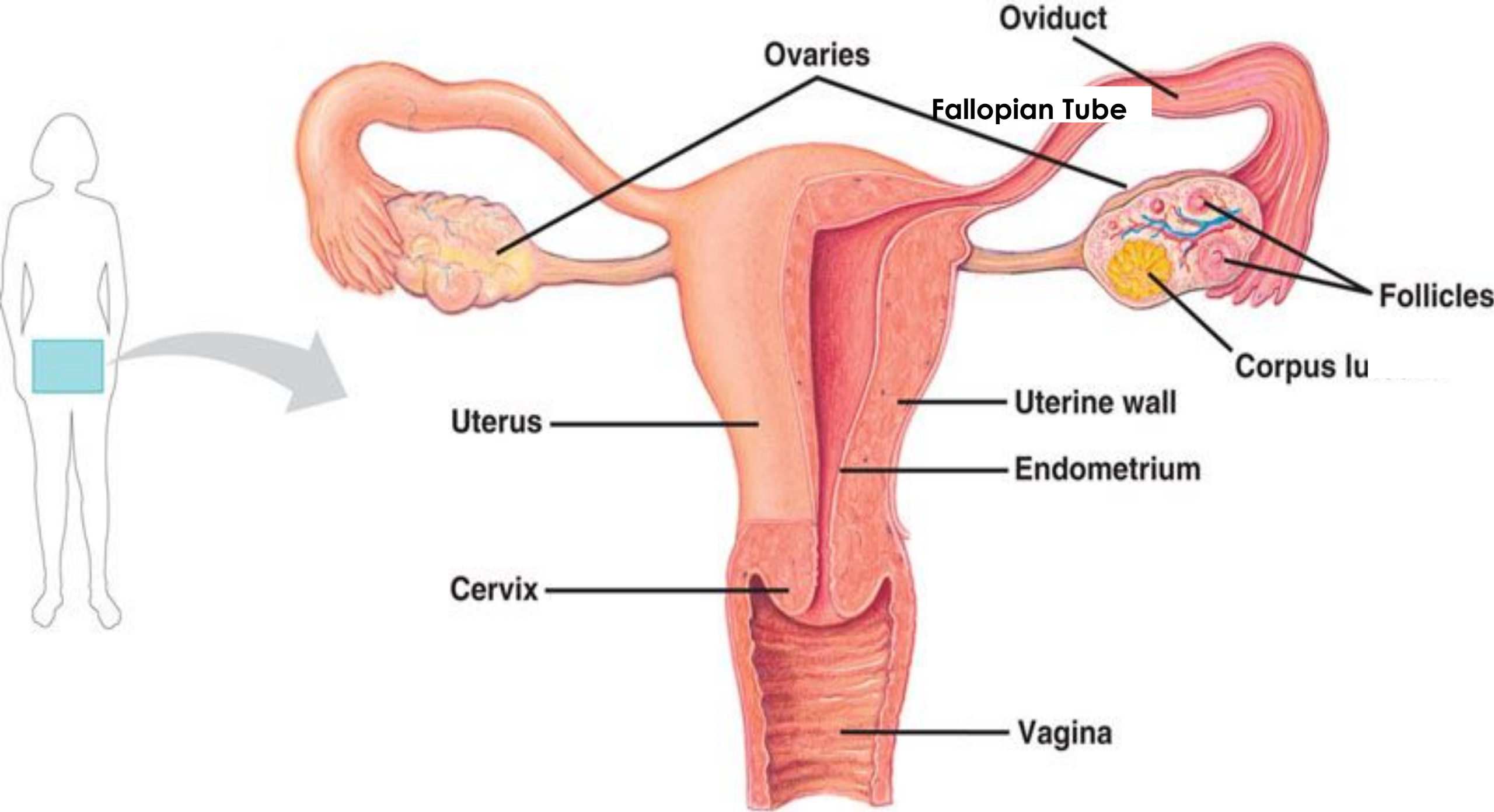
REPRODUCTIVE SYSTEM

Lesson: Number



FEMALE REPRODUCTIVE SYSTEM





FEMALE REPRODUCTIVE SYSTEM

- **Ovaries-**

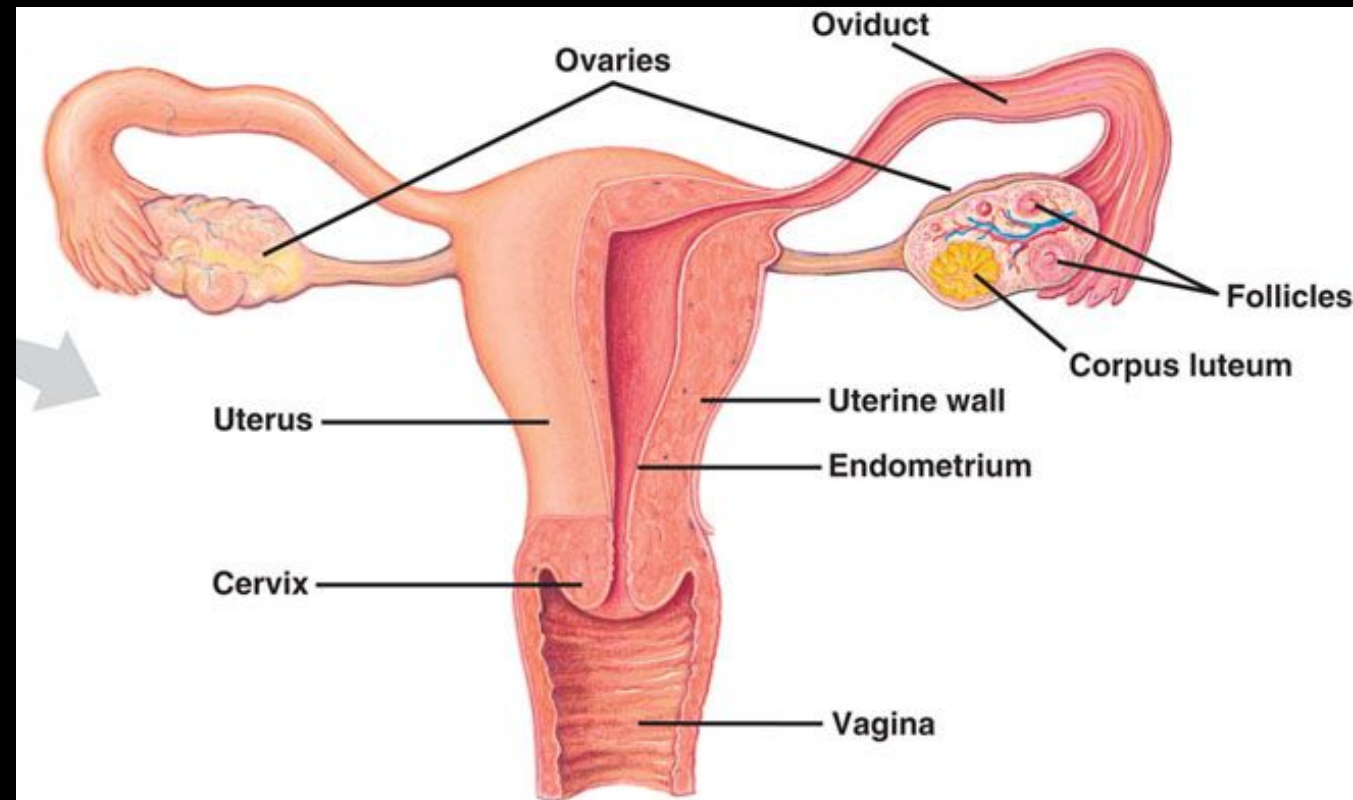
- Where the female egg is produced

- **Fallopian Tube-**

- Pathway from the ovary to the Uterus the egg travels down

- **Uterus-**

- Where the baby develops during pregnancy





MALE REPRODUCTIVE SYSTEM

- **Testosterone-**

- Hormone for Male
Reproduction development

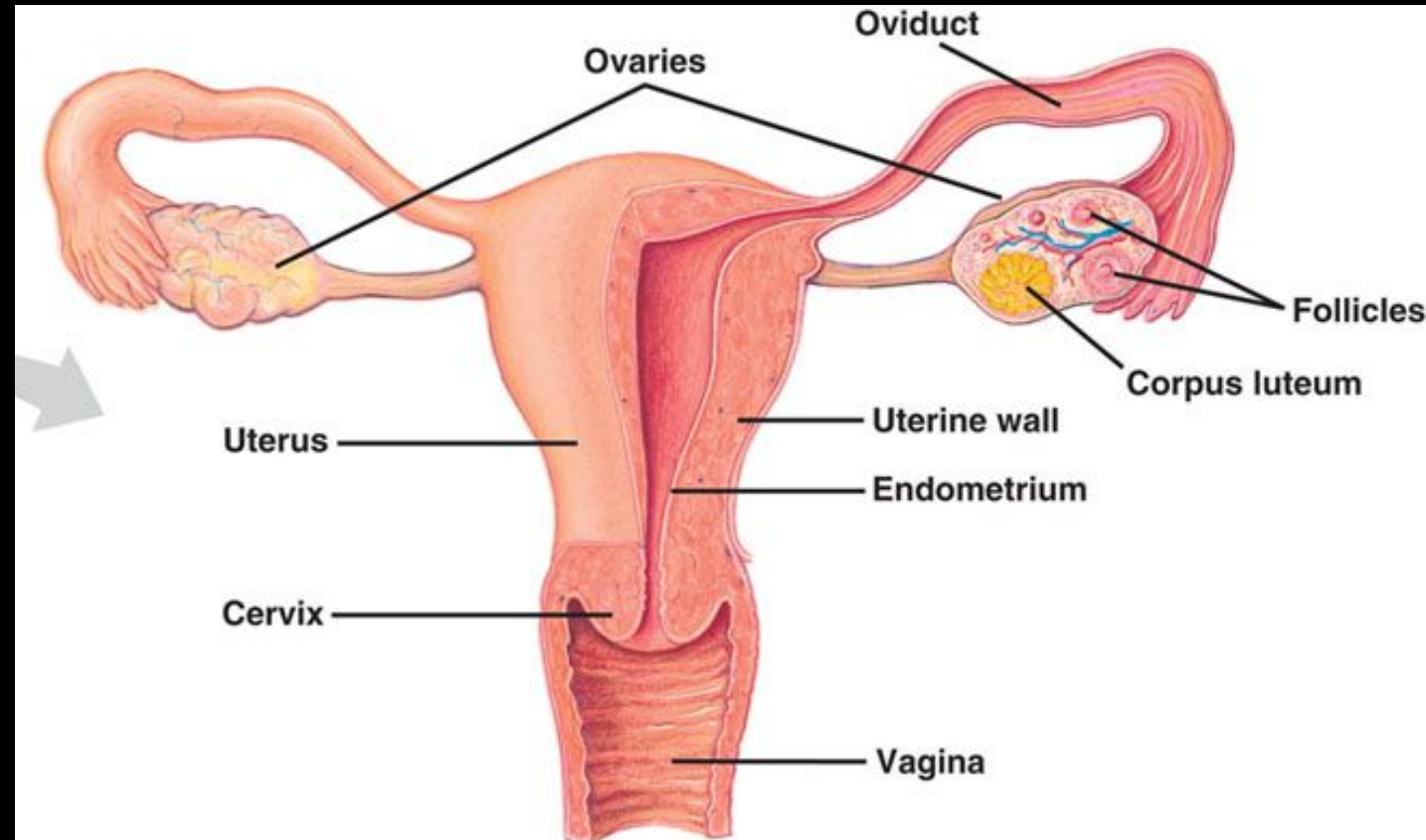
- **Estrogen**

- Hormone for Female
preproduction development

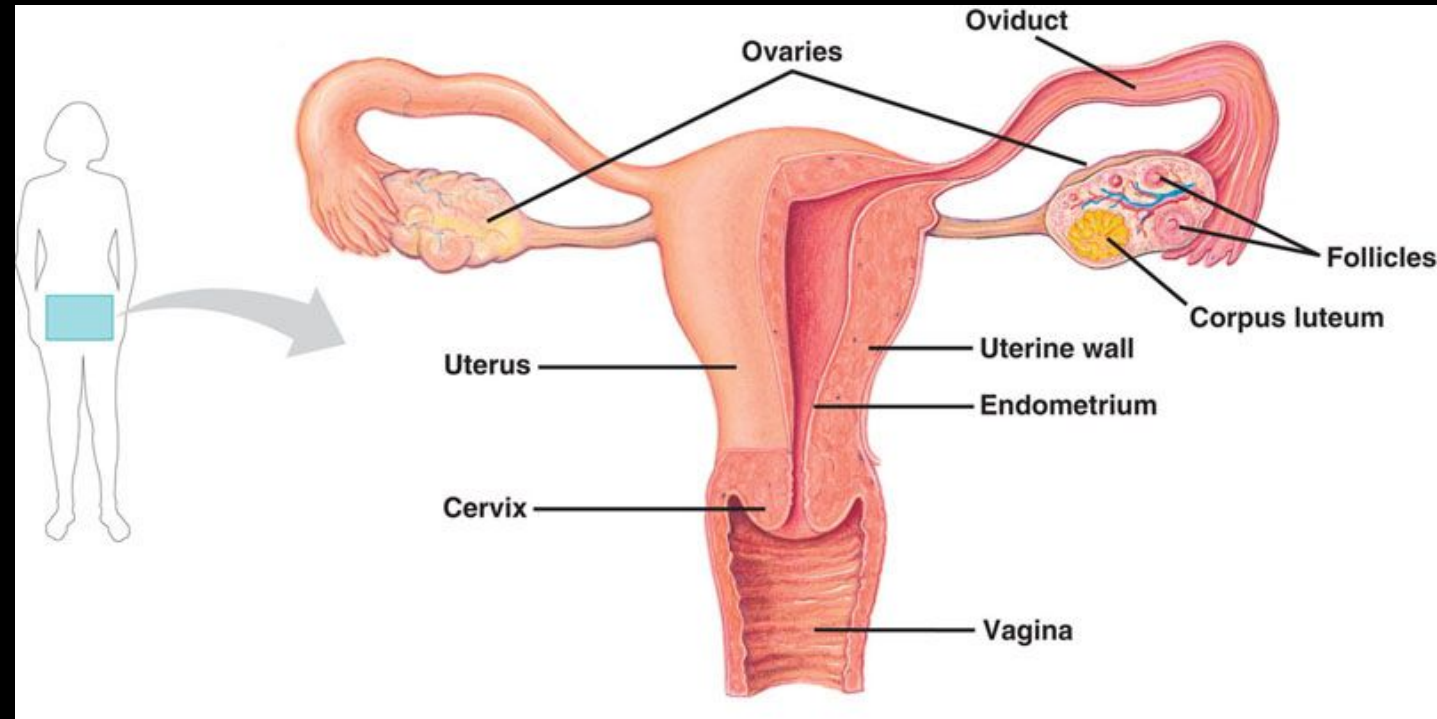
FEMALE REPRODUCTIVE SYSTEM

• Puberty for Females

- **Age: 9-14** usually around 12
- **Taller sooner**
- **Hips Get Wider**
- **Breasts Develop**
- **Increase of Hormone Activity**
- **Amount of hair increases**
 - face, armpits, torso, back, legs, pubic region
- **Periods Begin**

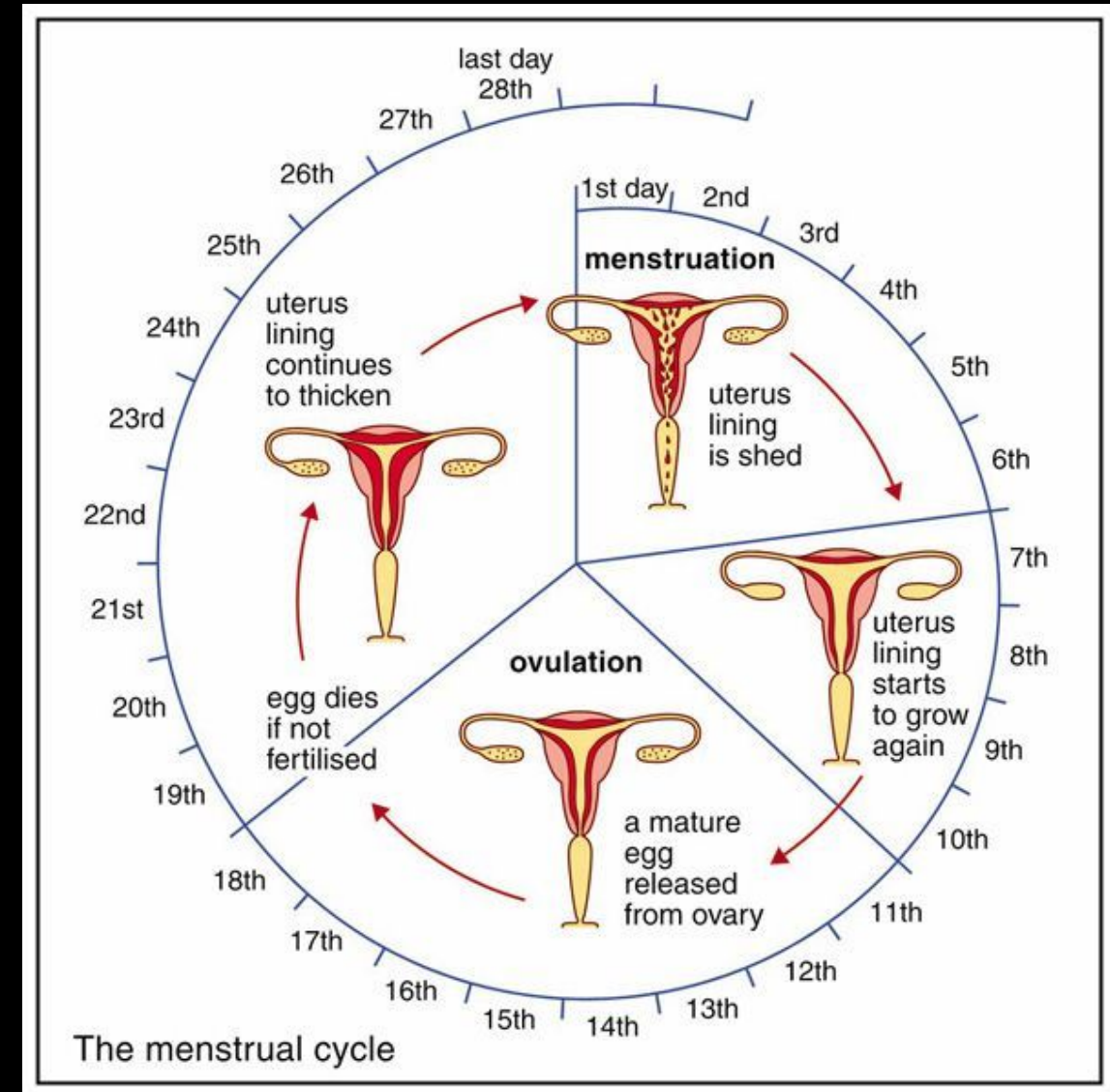



• Period (Menstruation)



MENSTRUAL CYCLE

- **Ovary produces an egg (ovum) & Ovary releases the egg**
- **Egg travels down Fallopian Tube**
- **Uterine wall thickens**
- **Uterine wall sheds and is expelled in the form of blood**
- **Cycle is on average about 28 days**



- 
- **Everybody is different**
 - **Every BODY is different**
 - **If anything seems unusual concerning your body, it is important to discuss with Parents and Doctors**