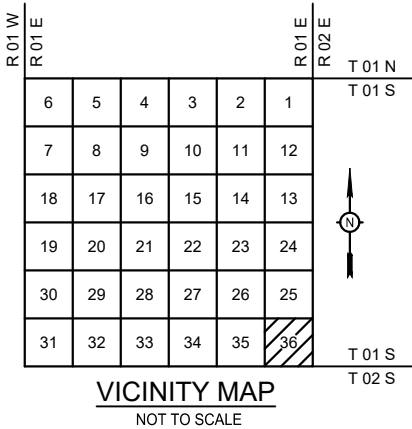


10-Apr-25 10:41:25 P:\SLC\_Public-Transp\09365400X\_Astro Way - Millcreek\CADD\PlanSheets\FRONT SHEETS.dwg



MILLCREEK  
SALT LAKE COUNTY, UTAH  
ASTRO WAY STORM DRAIN IMPROVEMENTS

OWNER

MILLCREEK  
JOHN MILLER  
3330 S 1300 E  
MILLCREEK, UT 84106  
PHONE: (801) 214-2700  
JMILLER@MILLCREEKUT.GOV

ENGINEER

KIMLEY-HORN & ASSOCIATES, INC.  
DERRICK TURNER, P.E.  
111 E BROADWAY  
SALT LAKE CITY, UT 84111  
PHONE: 385-237-5884  
DERRICK.TURNER@KIMLEY-HORN.COM

APPROVAL

DISCLAIMER:

THE CITY APPROVES THESE PLANS FOR CONCEPT ONLY AND ACCEPTS NO LIABILITY FOR ERRORS AND OMMISIONS.

BY: \_\_\_\_\_ DATE \_\_\_\_\_  
JOHN MILLER,  
MILLCREEK PUBLIC WORKS DIRECTOR/CITY  
ENGINEER

DRAWN BY: TET  
DESIGNED BY: EAP  
CHECKED BY: DWT



UTILITY CONTACTS				
Name	Phone	Contact Name	E-mail	Description
COMCAST	385-229-2252	NELSON MARTINEZ	NELSON_MARTINEZ3@CABLE.COMCAST.COM	CATV & FIBER
LUMEN/CENTURYLINK	(801) 974-8232	DAVID SLOAN	DAVID.SLOAN2@LUMEN.COM	CATV & FIBER
GOOGLE FIBER	801-503-8245	JEFF MCKAY	JEFFREYMCKAY@GOOGLE.COM	CATV & FIBER
GOOGLE FIBER	(801) 382-7634	STEVE BLOSCH	BLOSCH@XWF.GOOGLE.COM	CATV & FIBER
MT OLYMPUS IMPROVMENT DISTRICT	(801) 513-1080	DEAN AYALA	DEAN@MTOID.ORG	SEWER
ENBRIDGE GAS UTAH	(801) 391 1595	COLBY SPRATT	COLBY.SPRATT@DOMINIONENERGY.COM	GAS
ROCKY MOUNTAIN POWER	801-886-7007	KEVIN HILL	RMPPLANNINGANDDESIGNREQUESTS@PACIFICORP.COM	ELECTRIC
SALT LAKE CITY PUBLIC UTILITIES - ENGINEER	(801) 483-6783	GARY KOBZEFF	GARY.KOBZEFF@SLC.GOV	WATER
SALT LAKE CITY PUBLIC UTILITIES - INSPECTOR	(801) 577-5243	CORY LAURENCE	CORY.LAWRENCE@SLCGOV.COM	WATER

SHEET INDEX	
SUBSET	SHEETS
TITLE	1A
GENERAL NOTES	1B
CROSS REFERENCE	CR-01
ROADWAY	RDDT-01, RD-01 TO RD-03
STORM DRAIN	SD-01.1, SD-01.2, SD-02.1, SD-02.2, SD-03.1, SD-03.2

DERRICK TURNER, UTAH P.E. #10439635-2202  
FOR AND ON BEHALF OF KIMLEY-HORN AND ASSOCIATES, INC.

04/10/2025  
DATE

MILLCREEK, UT RECOGNIZES THE DESIGN ENGINEER AS HAVING RESPONSIBILITY FOR THE DESIGN. THE CITY HAS LIMITED ITS SCOPE OF REVIEW ACCORDINGLY. RESUBMITTAL REQUIRED IF CONSTRUCTION HAS NOT COMMENCED WITHIN 180 DAYS AFTER THE REVIEW DATE.



ASTRO WAY STORM DRAIN IMPROVEMENTS

Kimley»Horn

111 East Broadway, Suite 600 | Salt Lake City, UT 84111 | (385) 212-3176

TITLE

SHEET NUMBER

1A

GENERAL NOTES:

1. ALL WORK SHALL BE DONE IN ACCORDANCE WITH THE MILLCREEK STANDARD PLANS FOR PUBLIC WORKS CONSTRUCTION AND THE "APWA MANUAL OF STANDARD SPECIFICATIONS 2025 EDITION", INCLUDING ADDENDUM AND MODIFICATION THERETO, AND AS INSTRUCTED BY THE MILLCREEK PUBLIC WORKS DIRECTOR.
2. THE CONTRACTOR SHALL BE RESPONSIBLE FOR VERIFICATION AND PROTECTION OF ALL UTILITIES IN PLACE UNLESS OTHERWISE NOTED IN PLANS.
3. THE CONTRACTOR SHALL CONTACT THE UTILITY NOTIFICATION CENTER OF UTAH AT 811 FIVE BUSINESS DAYS IN ADVANCE OF ANY EXCAVATING OR GRADING.
4. THE CONTRACTOR SHALL PROTECT AND MAINTAIN ALL UTILITIES AND STRUCTURES AFFECTED BY THE WORK AND ANY DAMAGE SHALL BE REPAIRED AND RESTORED TO THE SATISFACTION OF MILLCREEK.
5. THE PHYSICAL FEATURES WITHIN THE LIMITS OF THE PROJECT HAVE BEEN SHOWN BASED ON THE BEST AVAILABLE INFORMATION AT THE TIME OF DESIGN. THE ENGINEER ASSUMES NO RESPONSIBILITY FOR THE ACCURACY OF THE FEATURES SHOWN. THE CONTRACTOR SHALL REVIEW AND VERIFY EXISTING PHYSICAL FEATURES AND INFORM HIMSELF OF THE CONDITIONS TO BE ENCOUNTERED DURING CONSTRUCTION.
6. ALL WORK SHALL BE DONE TO THE ELEVATIONS SHOWN ON THE PLANS UNLESS OTHERWISE NOTED OR APPROVED BY THE ENGINEER.
7. ALL MATERIAL AND WORKMANSHIP SHALL BE SUBJECT TO INSPECTION AND APPROVAL BY THE CITY ENGINEER.
8. THE CITY ENGINEER OR DESIGNEE SHALL BE NOTIFIED 48-HOURS PRIOR TO THE COMMENCEMENT OF ANY CONSTRUCTION.
9. THE CONTRACTOR SHALL LIMIT CONSTRUCTION ACTIVITIES TO THOSE AREAS WITHIN THE EXISTING RIGHT-OF-WAY AND THE TEMPORARY AND PERMANENT EASEMENT SHOWN ON THE PLANS. CONSTRUCTION ACTIVITIES IN ADDITION TO THE NORMAL CONSTRUCTION PROCEDURES SHALL INCLUDE THE PARKING OF VEHICLES OR EQUIPMENT, DISPOSAL OF LITTER AND ANY OTHER ACTION WHICH WOULD ALTER EXISTING CONDITIONS.
10. SEE SECTION 01 55 26 IN THE PROJECT MANUAL FOR TRAFFIC CONTROL PLAN REQUIREMENTS.
11. THE PHYSICAL FEATURES REQUIRING REMOVAL OR OBLITERATION WITHIN THE PROJECT SHALL BECOME THE PROPERTY OF THE CONTRACTOR AND SHALL BE LEGALLY DISPOSED OF OFF-SITE. THE EXCEPTION IS TRAFFIC CONTROL DEVICES, WHICH SHALL BE RETURNED TO THE BARRICADE COMPANY.
12. THE CONTRACTOR SHALL RESTORE ANY DAMAGED LANDSCAPING OR PRESSURIZED IRRIGATION SYSTEMS RESULTING FROM CONSTRUCTION ACTIVITIES.
13. THE CONTRACTOR SHALL HAVE A COPY OF APPLICABLE STANDARDS ON SITE FOR THE DURATION OF THIS PROJECT INCLUDING THE MANUAL ON UNIFORM TRAFFIC CONTROL DEVICES (MUTCD).
14. EXISTING AND PROPOSED JUNCTION BOX LIDS, WATER VALVES, SANITARY SEWER, OR STORM SEWER MANHOLE LIDS SHALL BE ADJUSTED TO MATCH PROPOSED ELEVATIONS.
15. BEFORE EXCAVATING, CONTRACTOR SHALL VERIFY LOCATION AND DEPTH OF ALL UNDERGROUND UTILITIES IN THE PROJECT AREA.
16. CONTRACTOR SHALL BE RESPONSIBLE FOR ANY MONUMENTATION AND/OR BENCHMARKS WHICH WILL BE DISTURBED OR DESTROYED BY CONSTRUCTION. SUCH POINTS SHALL BE REFERENCED AND REPLACED WITH APPROPRIATE MONUMENTATION BY A REGISTERED PROFESSIONAL LAND SURVEYOR AUTHORIZED TO PRACTICE LAND SURVEYING AT NO COST TO THE PROJECT. CONTRACTOR SHALL BE RESPONSIBLE FOR ANY PERMITS REQUIRED BY THE COUNTY SURVEYOR.
17. APPROVAL OF THESE PLANS BY THE CITY ENGINEER DOES NOT AUTHORIZE ANY WORK TO BE PERFORMED UNTIL A PERMIT HAS BEEN ISSUED.

18. THE APPROVAL OF THESE PLANS OR ISSUANCE OF PERMIT BY MILLCREEK DOES NOT AUTHORIZE THE OWNER OR CONTRACTOR TO VIOLATE FEDERAL, STATE OR CITY LAWS, ORDINANCES, REGULATIONS, OR POLICIES.
19. THE CONTRACTOR SHALL OBTAIN AN EXCAVATION PERMIT FROM MILLCREEK PRIOR TO STARTING CONSTRUCTION.
20. THE CONTRACTOR SHALL PROVIDE AND RECEIVE APPROVAL FROM MILLCREEK FOR A SWPPP PLAN PRIOR TO DISTURBING ANY VEGETATION OR MOVING ANY SOIL GREATER THAN 1 FOOT IN DEPTH OR AREAS OVER 1-ACRE.
21. CONTRACTOR SHALL CUT ALL EXISTING SIDEWALK, CURB & GUTTER, AND CONCRETE FLATWORK TO THE NEAREST JOINT IF SAWCUT CALLOUT IN PLANS IS WITHIN 4 FT OF EXISTING JOINT.
22. THE CONTRACTOR SHALL OBTAIN A TRAFFIC CONTROL PLAN AND SUBMIT TO THE FIELD INSPECTOR / CONSTRUCTION MANAGER MINIMUM 5 DAYS PRIOR TO BEGINNING WORK.
23. CONTRACTOR SHALL PROVIDE AND DISTRIBUTE APPROVED WRITTEN NOTICE OF CONSTRUCTION TO ALL RESIDENTS LOCATED IN THE CONSTRUCTION AREA AT LEAST 72 - HOURS PRIOR TO CONSTRUCTION. WRITTEN NOTICE TO BE APPROVED BY THE CITY PUBLIC WORKS.
24. CONTRACTOR SHALL NOTIFY RESIDENTS BEFORE DISCONNECTING SEWER AND WATER SERVICE CONNECTIONS AND PROVIDE A MEANS TO COLLECT AND DISPOSE OF ANY WASTEWATER DISCHARGE FROM SERVICE CONNECTIONS DURING CONSTRUCTION. CONTRACTOR SHALL ALSO NOTIFY RESIDENTS AT LEAST 48 HOURS BEFORE VEHICLE ACCESS TO THEIR PROPERTY MAY BE RESTRICTED. CONTRACTOR SHALL ALLOW RESIDENTS OVERNIGHT ACCESS TO DRIVEWAYS.
25. CONTRACTOR SHALL ADJUST GRADE OF NEW MANHOLE RIMS, NEW CLEAN OUT RIMS AND INLET GRATES TO MATCH ELEVATIONS OF EXISTING ROADWAY OR GUTTER.
26. CONTRACTOR SHALL CONSTRUCT BERMS AND/OR DRAINAGE DITCHES AS NEEDED TO KEEP STORM RUNOFF AND IRRIGATION FLOWS FROM ENTERING CONSTRUCTION EXCAVATIONS OR INTERFERING WITH CONSTRUCTION EFFORTS.
27. CONTRACTOR SHALL COMPLY WITH SAFETY REQUIREMENTS AS REQUIRED FOR OPERATING CONSTRUCTION EQUIPMENT BENEATH OVERHEAD POWER LINES.

EROSION CONTROL GENERAL NOTES:











28. THE CONTRACTOR MUST SUBMIT AND RECEIVE AN APPROVED SWPPP PLAN PRIOR TO STARTING CONSTRUCTION.
29. THE CONTRACTOR AND/OR THEIR AUTHORIZED REPRESENTATIVE SHALL REMOVE ALL SEDIMENT, MUD AND CONSTRUCTION DEBRIS THAT MAY ACCUMULATE IN THE FLOW LINES AND PUBLIC RIGHT OF WAYS AS A RESULT OF THE CONSTRUCTION PROJECT. SAID REMOVAL SHALL BE CONDUCTED IN A TIMELY MANNER AT NO COST TO THE PROJECT.
30. THE CONTRACTOR SHALL PREVENT SEDIMENT, DEBRIS AND ALL OTHER POLLUTANTS FROM ENTERING THE STORM SEWER DURING ALL DEMOLITION, EXCAVATION, TRENCHING, BORING, GRADING AND/OR OTHER CONSTRUCTION OPERATIONS THAT ARE A PART OF THIS PROJECT.
31. THE CLEANING OF CONCRETE TRUCK DELIVERY CHUTES IS PROHIBITED AT THE JOB SITE. THE DISCHARGE OF WATER CONTAINING WASTE CONCRETE TO THE STORM SEWER SYSTEM IS PROHIBITED.

32. THE CONTRACTOR SHALL PROTECT ALL STORM SEWER FACILITIES ADJACENT TO ANY LOCATION WHERE PAVEMENT CUTTING OPERATIONS, INVOLVING WHEEL CUTTING, SAW CUTTING OR ABRASIVE WATER JET CUTTING ARE TO TAKE PLACE. THE CONTRACTOR SHALL REMOVE AND PROPERLY DISPOSE OF ALL WASTE PRODUCTIONS GENERATED BY SAID CUTTING OPERATIONS ON A DAILY BASIS. THE DISCHARGE OF ANY WATER CONTAMINATED BY WASTE PRODUCTS FROM CUTTING OPERATIONS TO THE STORM SEWER SYSTEM IS PROHIBITED.
33. THE CONTRACTOR MUST KEEP ALL POLLUTANTS, INCLUDING TRENCH BACK FILL MATERIAL, FROM WASHING INTO THE STORM SEWER SYSTEM.
34. EROSION LOGS SHALL BE STOCKPILED SO THAT THEY MAY BE DEPLOYED FOR EROSION PROTECTION WITHIN TWO HOURS OF NOTICE BY THE ENGINEER.
35. THE CONTRACTORS SHALL BE RESPONSIBLE FOR TEMPORARY EROSION CONTROL MEASURES THROUGHOUT THE CONSTRUCTION DURATION AND WILL BE IN COMPLIANCE WITH THE STORM WATER DISCHARGE PERMIT REQUIREMENTS.

**ABBREVIATIONS:**

AC	ASPHALT CONCRETE
ASTM	AMERICAN SOCIETY OF TESTING AND MATERIALS
APPROX	APPROXIMATE OR APPROXIMATELY
BP OR BOP	BEGINNING OF PROJECT
CB	CATCH BASIN
CL	CENTERLINE
DR	DRIVE
EA	EACH
ELEV OR EL	ELEVATION
EX	EXISTING
FL	FLOWLINE
FT	FOOT/FEET
HMA	HOT MIX ASPHALT
HCL	HORIZONTAL CONTROL LINE
MAX	MAXIMUM
MH	MANHOLE
MIN	MINIMUM
MUTCD	MANUAL OF UNIFORM TRAFFIC CONTROL DEVICES
NTS	NOT TO SCALE
P/L	PROPERTY LINE
RCP	REINFORCED CONCRETE PIPE
ROW	RIGHT-OF-WAY
STA	STATION
STD	CITY OF MILLCREEK STANDARD SPECIFICATION
SW OR S/W	SIDEWALK
TBC	TOP BACK OF CURB
TYP	TYPICAL
EOP	EDGE OF PAVEMENT

**EXISTING UTILITY LEGEND: (SEE NOTE A BELOW)**

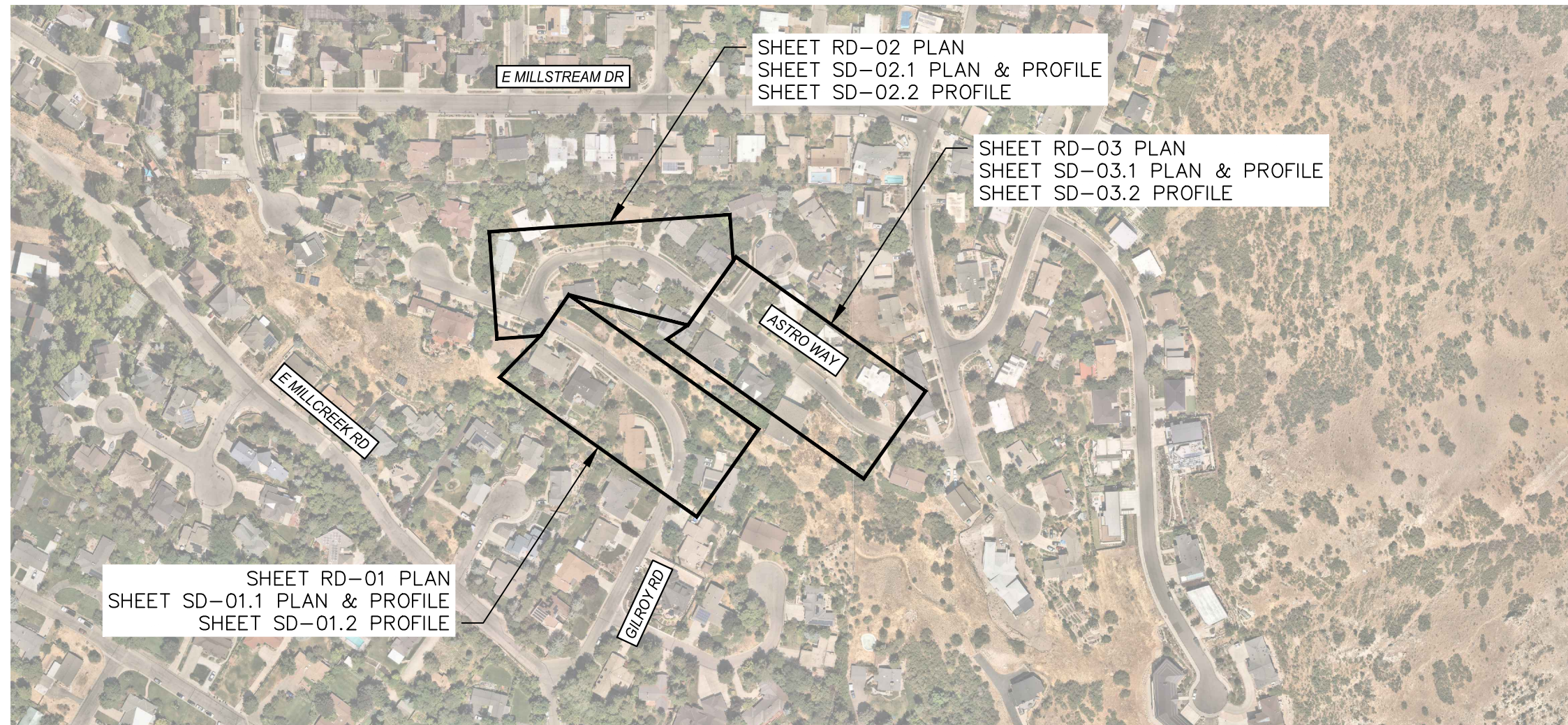
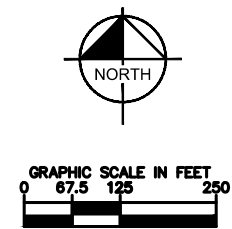
	EXISTING WATER LINE – QLD
	EXISTING SANITARY SEWER – QLD
	EXISTING GAS – QLD
	EXISTING FIBER OPTIC – QLD
	EXISTING STORM DRAIN – QLD
	EXISTING CABLE TV – QLD
	EXISTING ELECTRIC – QLD
	EXISTING OVERHEAD CABLE TV
	EXISTING TELEPHONE – QLD
	EXISTING OVERHEAD ELECTRIC

A) ALL OF THE SUBSURFACE UTILITIES ARE DEPICTED AT QUALITY LEVEL D (QLD), DEFINED IN CI/ASCE 38-02. UTILITY FACILITIES DEPICTED IN THIS FILE ARE THE RESULT OF THE PLOTTING OF RECORDS COLLECTED FROM REQUESTS SENT TO THOSE UTILITY OPERATORS THAT POTENTIALLY HAVE UNDERGROUND FACILITIES WITHIN THE PROJECT LIMITS BASED ON THE SUBMITTED BLUE STAKES PLAN & DESIGN TICKET. ENGINEERING JUDGMENT WAS APPLIED IN ORDER TO DEPICT UTILITIES USING THE INFORMATION COLLECTED. NO FIELD INVESTIGATION WAS CONDUCTED.



ASTRO WAY STORM DRAIN IMPROVEMENTS									
DRAWN BY: JEB									
DESIGNED BY: EAP									
CHECKED BY: DWT									
NO.									
BY									
DATE									
REVISIONS									
 111 East Broadway, Suite 600   Salt Lake City, UT 84111   (385) 212-3176									
GENERAL NOTES									
SHEET NUMBER									
1B									





**SURVEY CONTROL NOTES:**

BASIS OF BEARING:

UTAH STATE PLANE CENTRAL NAD83 US SURVEY FOOT GEODETIC BEARINGS

BENCHMARK:

THE BENCHMARK FOR THIS PROJECT IS A SET MAG AND WASHER IN GILROY ROAD WITH A MEASURED NAVD88 GEOID 18 ELEVATION OF 4984.29'. ELEVATION WAS MEASURED USING RTK GPS MEASUREMENTS BASED ON UTAH AGRC VRS NETWORK.

THE SURVEY WAS COMPLETED JANUARY 28, 2025.

COORDINATE SYSTEM AND PROJECTION INFORMATION:

GEODETIC DATUM = NAD83

VERTICAL DATUM = NAVD88

COORDINATE SYSTEM = UTAH STATE PLANE, CENTRAL ZONE

GEOID MODEL = GEOID 18

UNITS = US SURVEY FOOT

FALSE NORTHING OFFSET= 7421218.50'

FALE EASTING OFFSET = 1559661.44'

COMBINED SCALE FACTOR = 1.00001091970644

CONVERGENCE ANGLE= -000°11'11.54"

THE COMBINED SCALE FACTOR AND CONVERGENCE ANGLE FOR THIS PROJECT WERE DERIVED FROM THE FOLLOWING VALUES:

PROJECT LATITUDE = N 040°41'33.93"

PROJECT LONGITUDE= W 111°47'28.34"

PROJECT HEIGHT = 5000.00'

COORDINATE DATUM (US SURVEY FOOT):

PROJECT COORDINATES ARE NAD83 UTAH CENTRAL ZONE COORDINATES  
PROJECTED TO GROUND. THE STATE PLANE COORDINATE VALUES ARE  
SCALED BY THE COMBINED SCALE FACTOR (FROM COORDINATE  
7421218.50', 1559661.44').

## ASTRO WAY STORM DRAIN IMPROVEMENTS

**Kimley»»Horn**  
111 East Broadway, Suite 600 | Salt Lake City, UT 84111 | (385) 212-3176

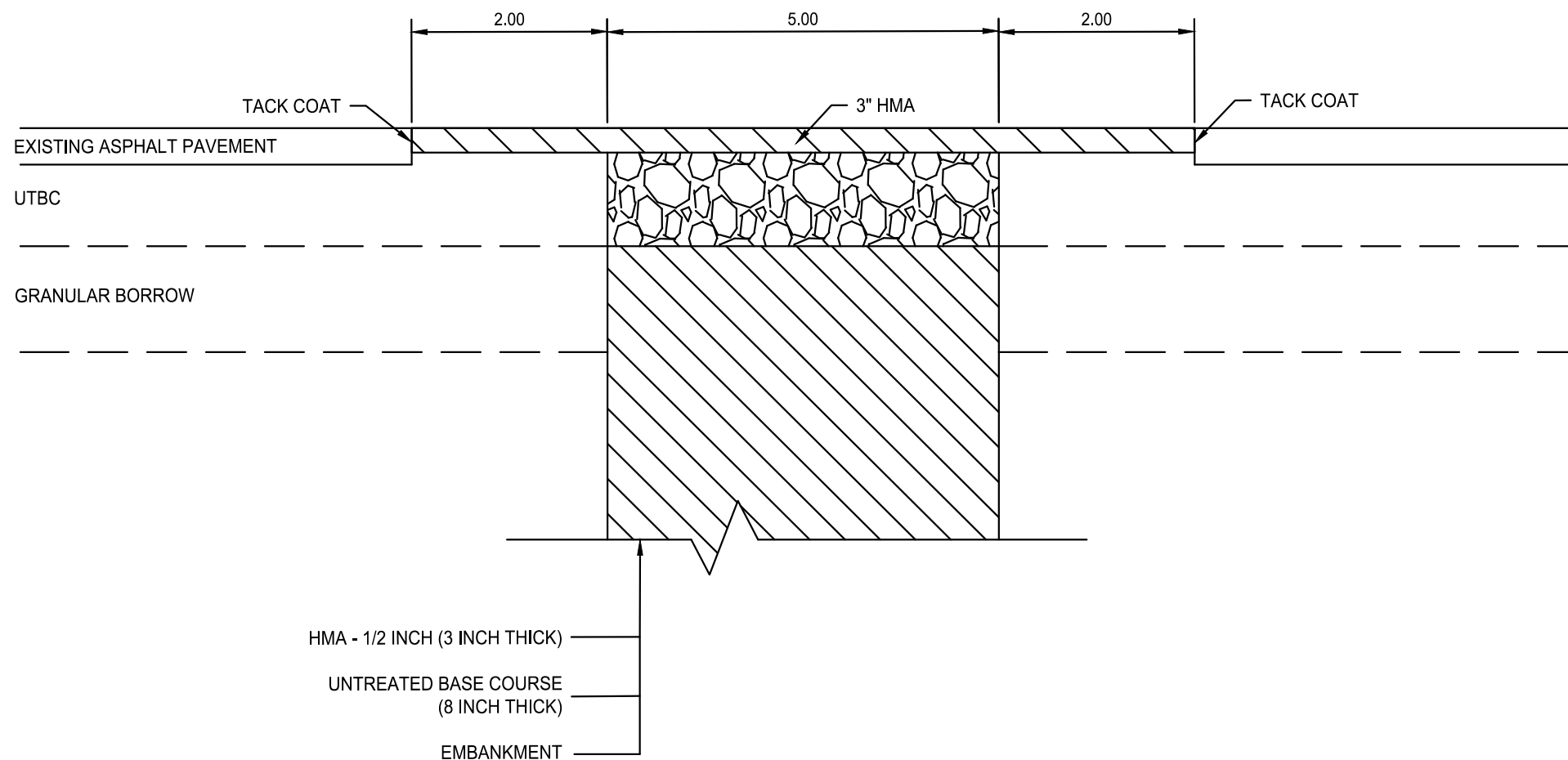
## CROSS REFERENCE

SHEET NUMBER

CR-01







## ASPHALT T-PATCH DETAIL

NOTES:

1. COMPACT PIPE BEDDING MATERIAL AROUND THE STORM DRAIN PIPE PER SPECIFICATION 33 05 20.
2. TRENCH EXCAVATION, PIPE BEDDING, AND BACKFILL ARE INCLUDED IN DRAINAGE PIPE PAY ITEM.



## ASTRO WAY STORM DRAIN IMPROVEMENTS

**Kimley»»Horn**  
111 East Broadway, Suite 600 | Salt Lake City, UT 84111 | (385) 212-3176

## DETAIL

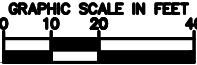
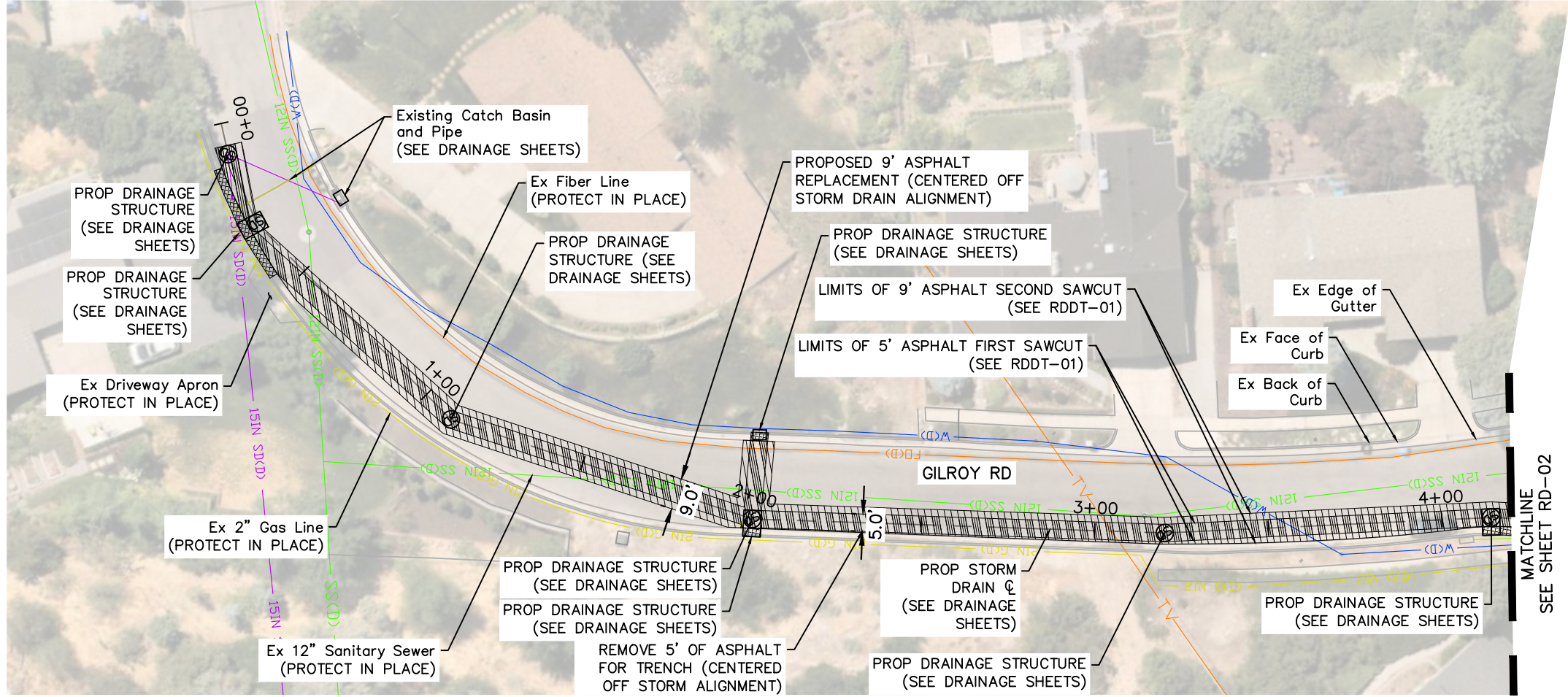
SHEET NUMBER

**RDDT-01**




[illegible]

DRAWN BY: TT
DESIGNED BY: TG
CHECKED BY: JRW

PLAN VIEW



### LEGEND

- |   |  |
|---|--|
|  | ASPHALT REMOVAL AND REPLACEMENT<br>(FIRST SAWCUT) (SEE RDDT-01)  |
|  | ASPHALT REMOVAL AND REPLACEMENT<br>(SECOND SAWCUT) (SEE RDDT-01)   |
|  | CURB AND GUTTER REMOVAL AND<br>REPLACEMENT (SEE APWA PLAN 205.1,<br>MATCH EXISTING CURB AND GUTTER TYPE) |

NOTES:

1. CONTRACTOR TO REPLACE PROP ASPHALT AND PROP CURB AND GUTTER AT EXISTING ELEVATION.
2. CONTRACTOR TO REPLACE EXISTING CROSSWALK MARKINGS AT INTERSECTIONS WITHIN ASPHALT REPLACEMENT LIMITS

## ASTRO WAY STORM DRAIN IMPROVEMENTS

# Kimley»»Horn

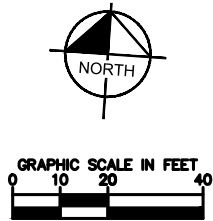
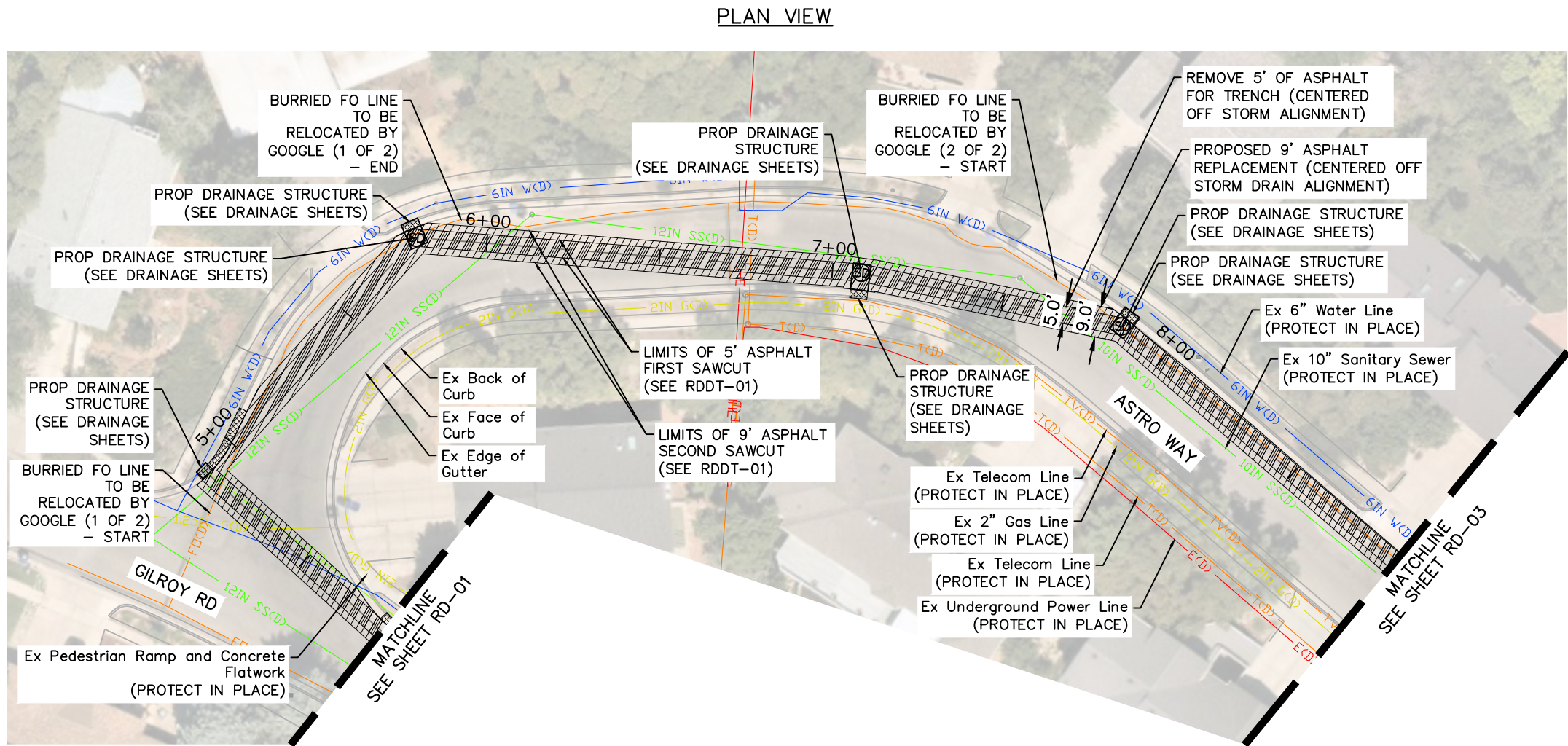
## PLAN

SHEET NUMBER

RD-01







LEGEND

- ASPHALT REMOVAL AND REPLACEMENT (FIRST SAWCUT) (SEE RDDT-01)
- ASPHALT REMOVAL AND REPLACEMENT (SECOND SAWCUT) (SEE RDDT-01)
- CURB AND GUTTER REMOVAL AND REPLACEMENT (SEE APWA PLAN 205.1, MATCH EXISTING CURB AND GUTTER TYPE)

- NOTES:
- CONTRACTOR TO REPLACE PROP ASPHALT AND PROP CURB AND GUTTER AT EXISTING ELEVATION.

NO.	DATE	BY	REVISIONS

DRAWN BY: TET  
DESIGNED BY: EAP  
CHECKED BY: DWT

ASTRO WAY STORM DRAIN IMPROVEMENTS

**Kimley»Horn**  
111 East Broadway, Suite 600 | Salt Lake City, UT 84111 | (385) 212-3776

PLAN

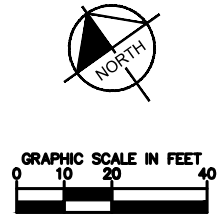
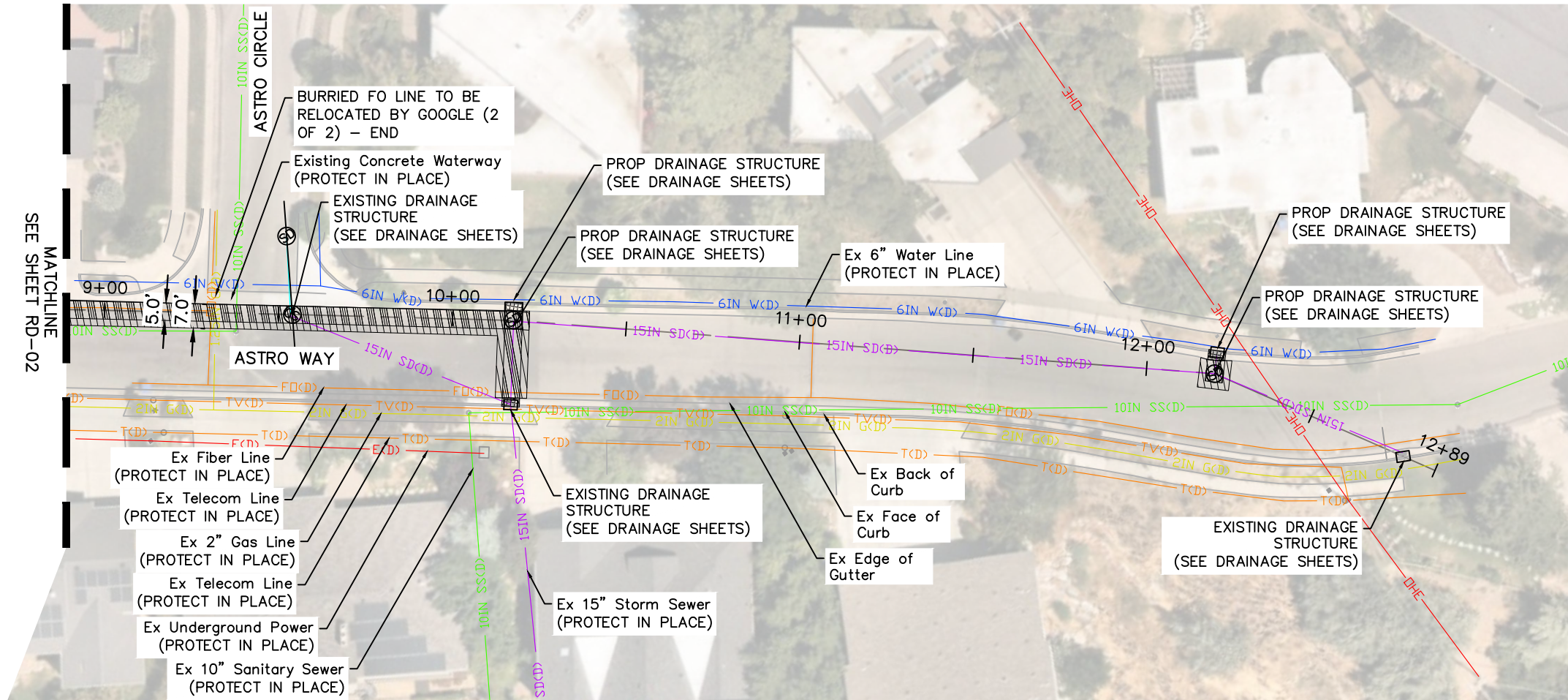
SHEET NUMBER

RD-02





PLAN VIEW



LEGEND

- ASPHALT REMOVAL AND REPLACEMENT (FIRST SAWCUT) (SEE RDDT-01)
- ASPHALT REMOVAL AND REPLACEMENT (SECOND SAWCUT) (SEE RDDT-01)
- CURB AND GUTTER REMOVAL AND REPLACEMENT (SEE APWA PLAN 205.1, MATCH EXISTING CURB AND GUTTER TYPE)

- NOTES:
- CONTRACTOR TO REPLACE PROP ASPHALT AND PROP CURB AND GUTTER AT EXISTING ELEVATION.

ASTRO WAY STORM DRAIN IMPROVEMENTS

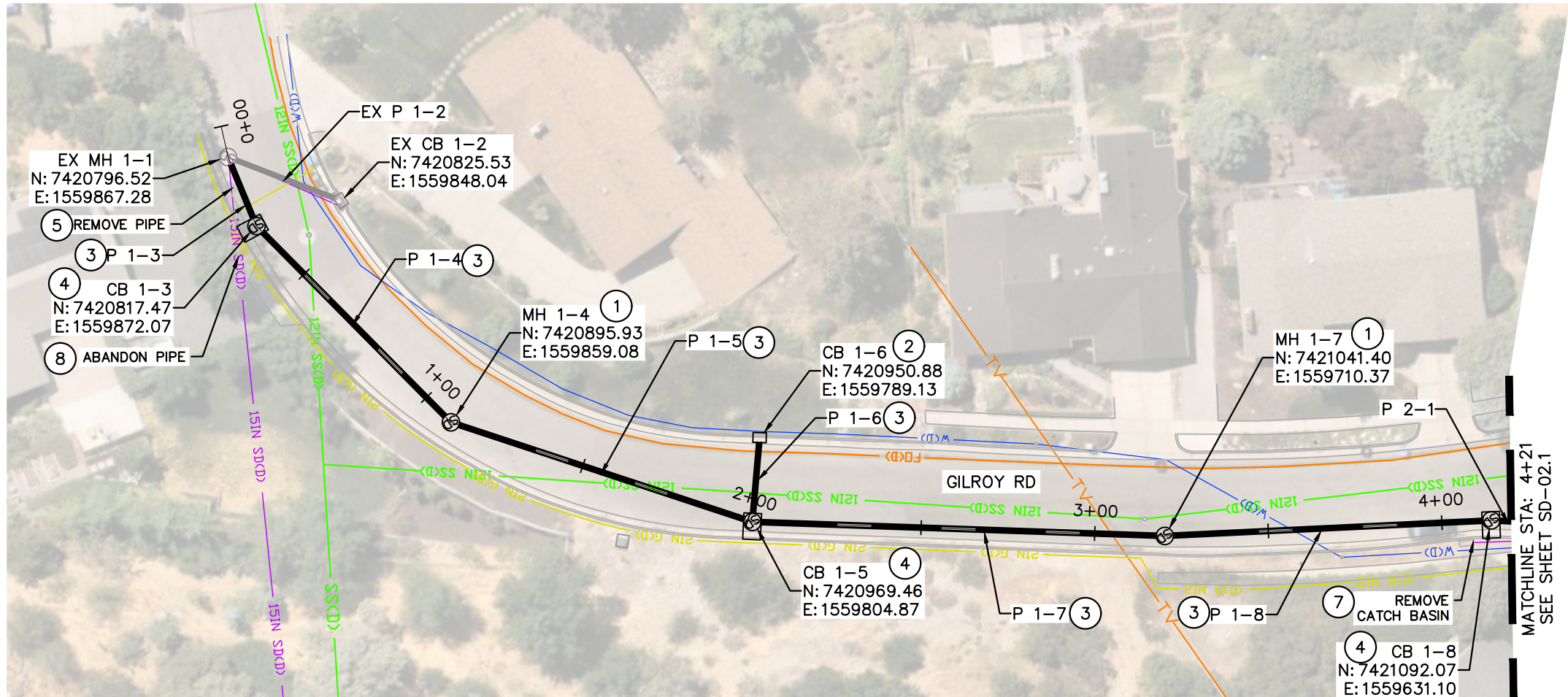
**Kimley»Horn**  
111 East Broadway, Suite 600 | Salt Lake City, UT 84111 | (385) 212-3776

PLAN

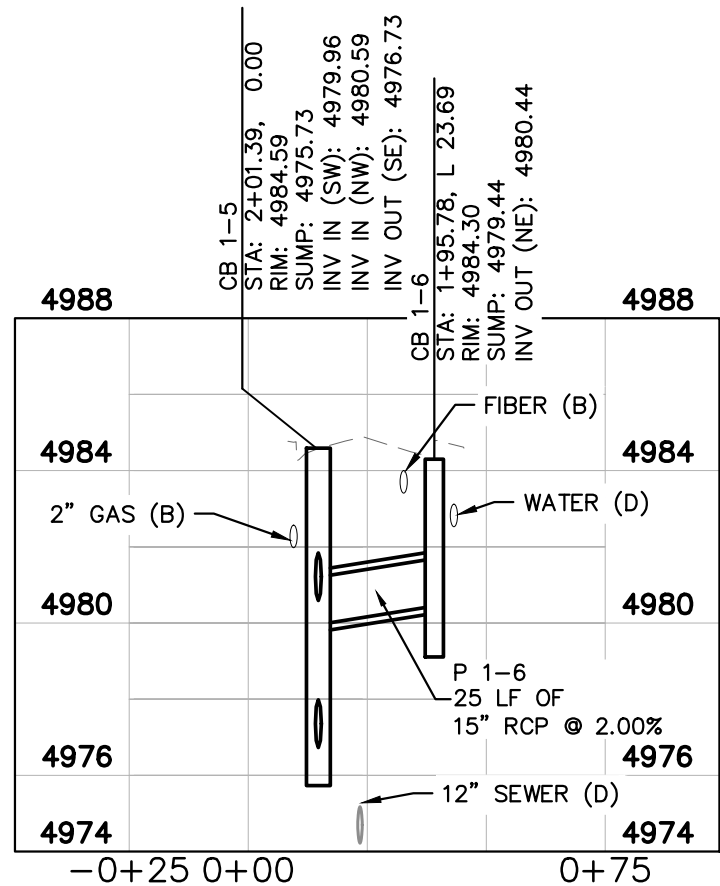
SHEET NUMBER  
RD-03







PLAN VIEW

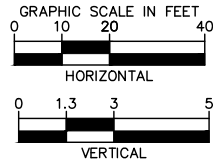


PROFILE VIEW

- 1 PRECAST MANHOLE STYLE B PER APWA STANDARD PLAN 341  
[MH 1-7]  
[MH 1-4]
- 2 CATCH BASIN PER APWA STANDARD PLAN 315.1  
[CB 1-6]
- 3 15" REINFORCED CONCRETE PIPE  
[P 1-3] CB 1-3 TO EX MH 1-1 22 LF  
[P 1-4] MH 1-4 TO CB 1-3 80 LF  
[P 1-5] CB 1-5 TO MH 1-4 91 LF  
[P 1-6] CB 1-6 TO CB 1-5 24 LF  
[P 1-7] MH 1-7 TO CB 1-5 119 LF  
[P 1-8] CB 1-8 TO MH 1-7 94 LF
- 4 COMBINATION CATCH BASIN AND CLEANOUT BOX PER APWA STANDARD PLAN 316  
[CB 1-3]  
[CB 1-5]  
[CB 1-8]
- 5 REMOVE PIPE  
N: 7420798.57 E: 1559867.25 TO  
N: 7420817.20 E: 1559876.54 23 LF
- 7 REMOVE CATCH BASIN  
N: 7421093.35 E: 1559640.52
- 8 ABANDON PIPE  
N: 7420817.20 E: 1559876.54 10 LF

NOTES:

- 1) MANHOLE LOCATIONS ARE CALLED OUT FROM CENTER OF STRUCTURE. CATCH BASIN LOCATIONS ARE CALLED OUT FROM THE CENTER OF THE GRATE EDGE ALONG THE FLOW LINE. COMBINATION CATCH BASIN AND CLEANOUT BOX LOCATIONS ARE CALLED OUT FROM THE CENTER OF THE ROUND FRAME AND COVER.
- 2) UTILITY LOCATIONS ARE APPROXIMATE AND BASED ON THE BEST AVAILABLE INFORMATION. CONTRACTOR IS RESPONSIBLE FOR LOCATING ALL UTILITIES PRIOR TO EXCAVATION.
- 3) CONTRACTOR TO COORDINATE AND LOOP EXISTING SERVICE LATERALS (GAS, COMM, WATER, ETC.) AS NEEDED FOR CONSTRUCTION. PROTECT IN PLACE ALL OTHER UTILITIES AND EXISTING DRAINAGE FEATURES NOT BEING RELOCATED UNLESS OTHERWISE NOTED.
- 4) PROFILES AND CROSS-SECTIONS ARE PROVIDED FOR INFORMATION ONLY TO ASSIST IN PIPE INSTALLATION.
- 5) MAINTAIN AND KEEP STORM DRAINAGE FEATURES OPERATIONAL AS NEEDED TO CONVEY DRAINAGE DURING CONSTRUCTION.
- 6) UNLESS OTHERWISE STATED, ALL STORM INFRASTRUCTURE IS TO CONFORM WITH APWA STANDARDS AND SPECIFICATIONS.
- 7) ALL PROPOSED APWA STRUCTURES REFERENCE THE APWA UTAH CHAPTER 2025 MANUAL OF STANDARD SPECIFICATIONS. CONTRACTOR TO USE MOST UPDATED APWA STANDARDS AT TIME OF CONSTRUCTION.



ASTRO WAY STORM DRAIN  
IMPROVEMENTS

**Kimley»Horn**  
111 East Broadway, Suite 600 | Salt Lake City, UT 84111 | (385) 212-3776

PLAN AND  
PROFILE

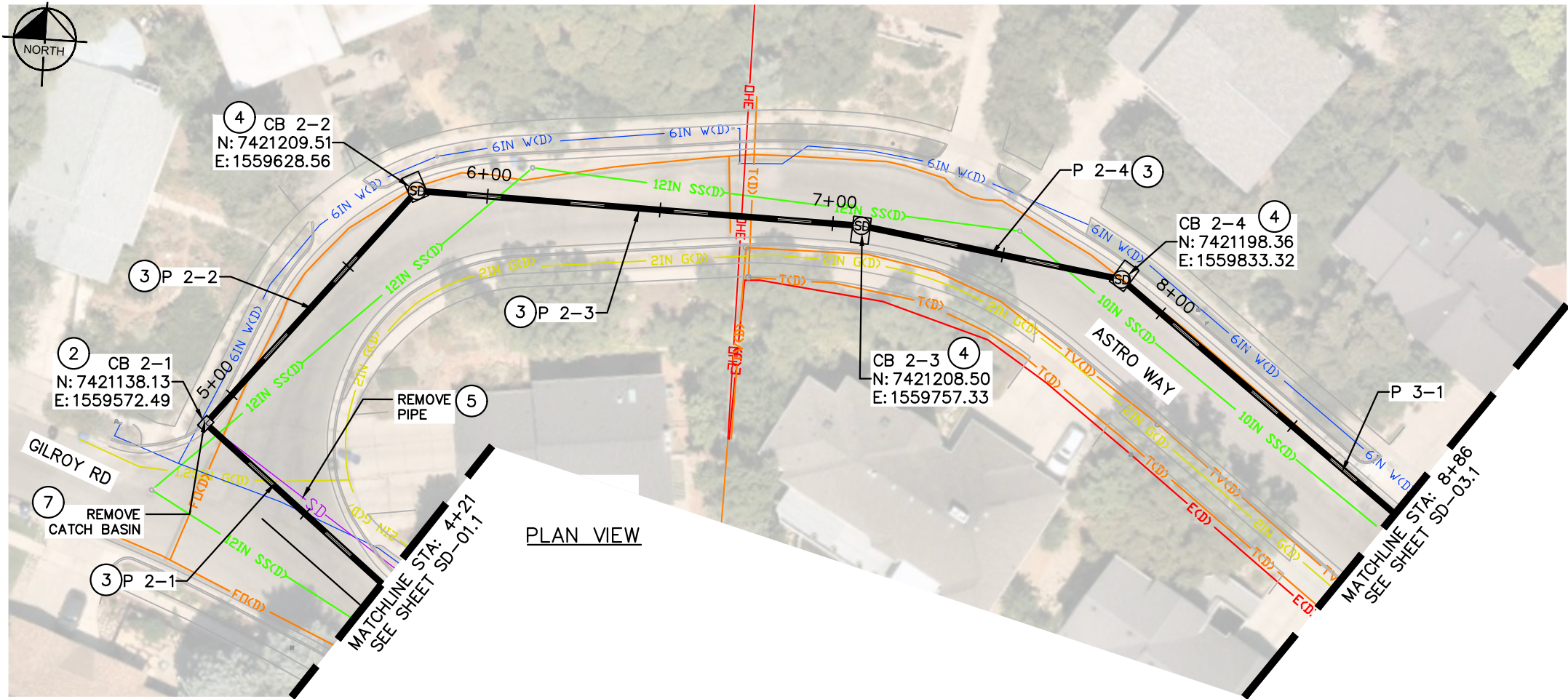
SHEET NUMBER  
SD-01.1

- PROFILE NOTES:
- (A) SURVEYED UTILITY
  - (B) ELEVATION UNKNOWN, PROTECT IN PLACE
  - (C) ELEVATION VERIFIED BY TEST HOLE
  - (D) ELEVATION ASSUMED FROM NEARBY TEST HOLE OR SURVEY









PLAN VIEW

- 2 CATCH BASIN PER APWA STANDARD PLAN 315.1 [CB 2-1]
- 3 15" REINFORCED CONCRETE PIPE [P 2-1] CB 2-1 TO CB 1-8 75 LF [P 2-2] CB 2-2 TO CB 2-1 91 LF [P 2-3] CB 2-3 TO CB 2-2 129 LF [P 2-4] CB 2-4 TO CB 2-3 77 LF
- 4 COMBINATION CATCH BASIN AND CLEANOUT BOX PER APWA STANDARD PLAN 316 [CB 2-2] [CB 2-3] [CB 2-4]
- 5 REMOVE PIPE N: 7421094.34 E: 1559638.93 TO N: 7421138.32 E: 1559572.552 82 LF
- 7 REMOVE CATCH BASIN N: 7421138.32 E: 1559572.552

DRAWN BY: EMH  
DESIGNED BY: EAP  
CHECKED BY: DWT

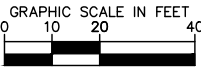
ASTRO WAY STORM DRAIN  
IMPROVEMENTS

**Kimley»Horn**  
111 East Broadway, Suite 600 | Salt Lake City, UT 84111 | (385) 212-3776

PLAN AND  
PROFILE

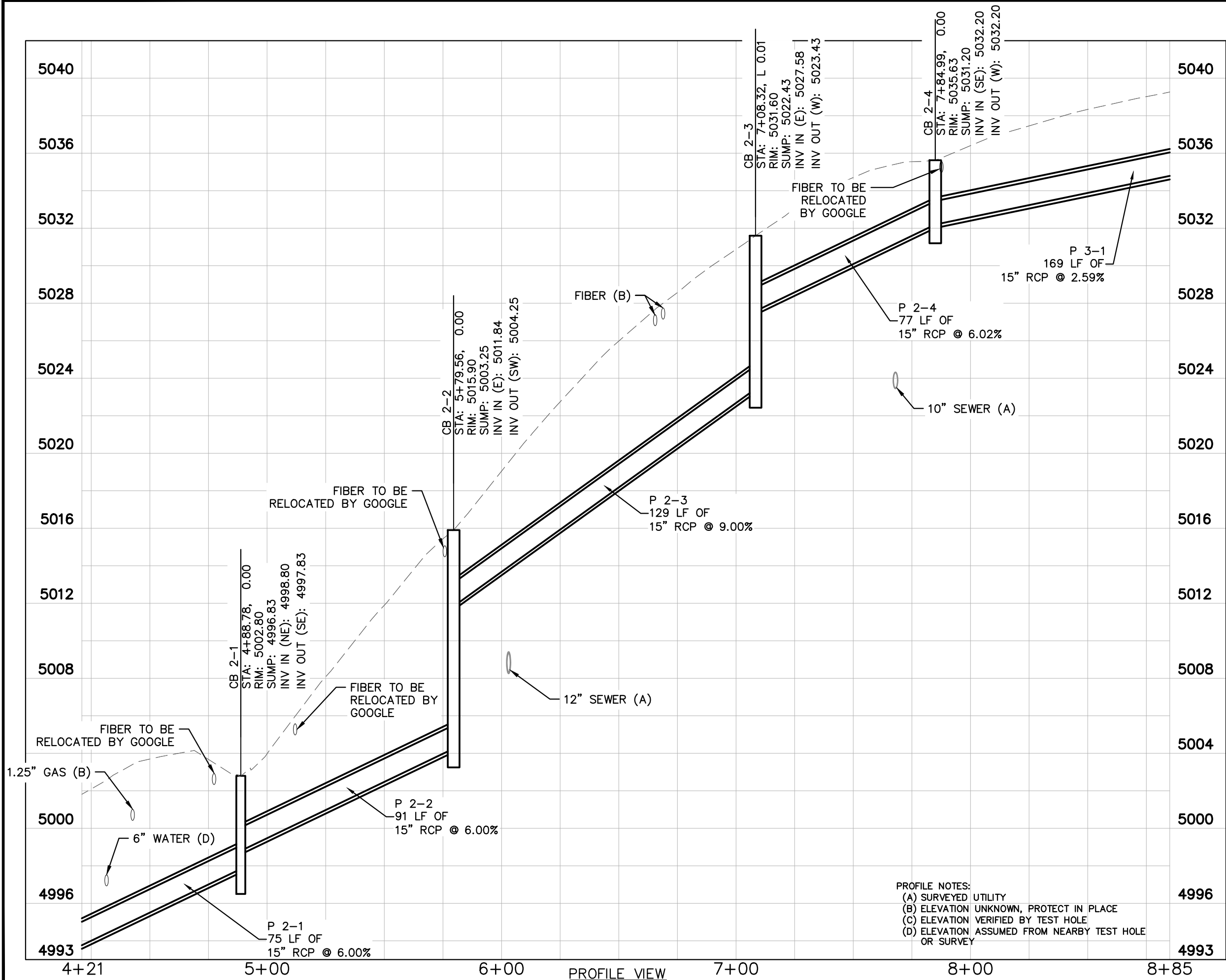
SHEET NUMBER  
SD-02.1

- NOTES:
- 1) MANHOLE LOCATIONS ARE CALLED OUT FROM CENTER OF STRUCTURE. CATCH BASIN LOCATIONS ARE CALLED OUT FROM THE CENTER OF THE GRATE EDGE ALONG THE FLOW LINE. COMBINATION CATCH BASIN AND CLEANOUT BOX LOCATIONS ARE CALLED OUT FROM THE CENTER OF THE ROUND FRAME AND COVER.
  - 2) UTILITY LOCATIONS ARE APPROXIMATE AND BASED ON THE BEST AVAILABLE INFORMATION. CONTRACTOR IS RESPONSIBLE FOR LOCATING ALL UTILITIES PRIOR TO EXCAVATION.
  - 3) CONTRACTOR TO COORDINATE AND LOOP EXISTING SERVICE LATERALS (GAS, COMM, WATER, ETC.) AS NEEDED FOR CONSTRUCTION. PROTECT IN PLACE ALL OTHER UTILITIES AND EXISTING DRAINAGE FEATURES NOT BEING RELOCATED UNLESS OTHERWISE NOTED.
  - 4) PROFILES AND CROSS-SECTIONS ARE PROVIDED FOR INFORMATION ONLY TO ASSIST IN PIPE INSTALLATION.
  - 5) MAINTAIN AND KEEP STORM DRAINAGE FEATURES OPERATIONAL AS NEEDED TO CONVEY DRAINAGE DURING CONSTRUCTION.
  - 6) UNLESS OTHERWISE STATED, ALL STORM INFRASTRUCTURE IS TO CONFORM WITH APWA STANDARDS AND SPECIFICATIONS.
  - 7) ALL PROPOSED APWA STRUCTURES REFERENCE THE APWA UTAH CHAPTER 2025 MANUAL OF STANDARD SPECIFICATIONS. CONTRACTOR TO USE MOST UPDATED APWA STANDARDS AT TIME OF CONSTRUCTION.





Date: 4/10/2025 4:32 PM User: BLAUSCK, JUSTIN  
Path: K:\SCL-FINAL-TRANS\ASTRO WAY - MILLER\DWG\PLAN\ASTRO WAY.DWG  
This document, together with the drawings, is the property of Kimley-Horn and Associates, Inc. and is loaned to the client for the specific purpose and use for which it was prepared. It is not to be reproduced, stored in a retrieval system, or transmitted in any form or by any means, electronic, mechanical, photocopying, recording, or by any information storage and retrieval system, without the prior written permission of Kimley-Horn and Associates, Inc.



NOTES:

- 1) MANHOLE LOCATIONS ARE CALLED OUT FROM CENTER OF STRUCTURE. CATCH BASIN LOCATIONS ARE CALLED OUT FROM THE CENTER OF THE GRATE EDGE ALONG THE FLOW LINE. COMBINATION CATCH BASIN AND CLEANOUT BOX LOCATIONS ARE CALLED OUT FROM THE CENTER OF THE ROUND FRAME AND COVER.
- 2) UTILITY LOCATIONS ARE APPROXIMATE AND BASED ON THE BEST AVAILABLE INFORMATION. CONTRACTOR IS RESPONSIBLE FOR LOCATING ALL UTILITIES PRIOR TO EXCAVATION.
- 3) CONTRACTOR TO COORDINATE AND LOOP EXISTING SERVICE LATERALS (GAS, COMM, WATER, ETC.) AS NEEDED FOR CONSTRUCTION. PROTECT IN PLACE ALL OTHER UTILITIES AND EXISTING DRAINAGE FEATURES NOT BEING RELOCATED UNLESS OTHERWISE NOTED.
- 4) PROFILES AND CROSS-SECTIONS ARE PROVIDED FOR INFORMATION ONLY TO ASSIST IN PIPE INSTALLATION.
- 5) MAINTAIN AND KEEP STORM DRAINAGE FEATURES OPERATIONAL AS NEEDED TO CONVEY DRAINAGE DURING CONSTRUCTION.
- 6) UNLESS OTHERWISE STATED, ALL STORM INFRASTRUCTURE IS TO CONFORM WITH APWA STANDARDS AND SPECIFICATIONS.
- 7) ALL PROPOSED APWA STRUCTURES REFERENCE THE APWA UTAH CHAPTER 2025 MANUAL OF STANDARD SPECIFICATIONS. CONTRACTOR TO USE MOST UPDATED APWA STANDARDS AT TIME OF CONSTRUCTION.

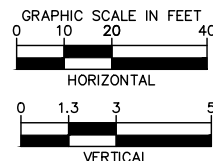
DRAWN BY: EMH  
DESIGNED BY: EAP  
CHECKED BY: DWT

ASTRO WAY STORM DRAIN  
IMPROVEMENTS

**Kimley»Horn**  
111 East Broadway, Suite 600 | Salt Lake City, UT 84111 | (385) 212-3776

PLAN AND  
PROFILE

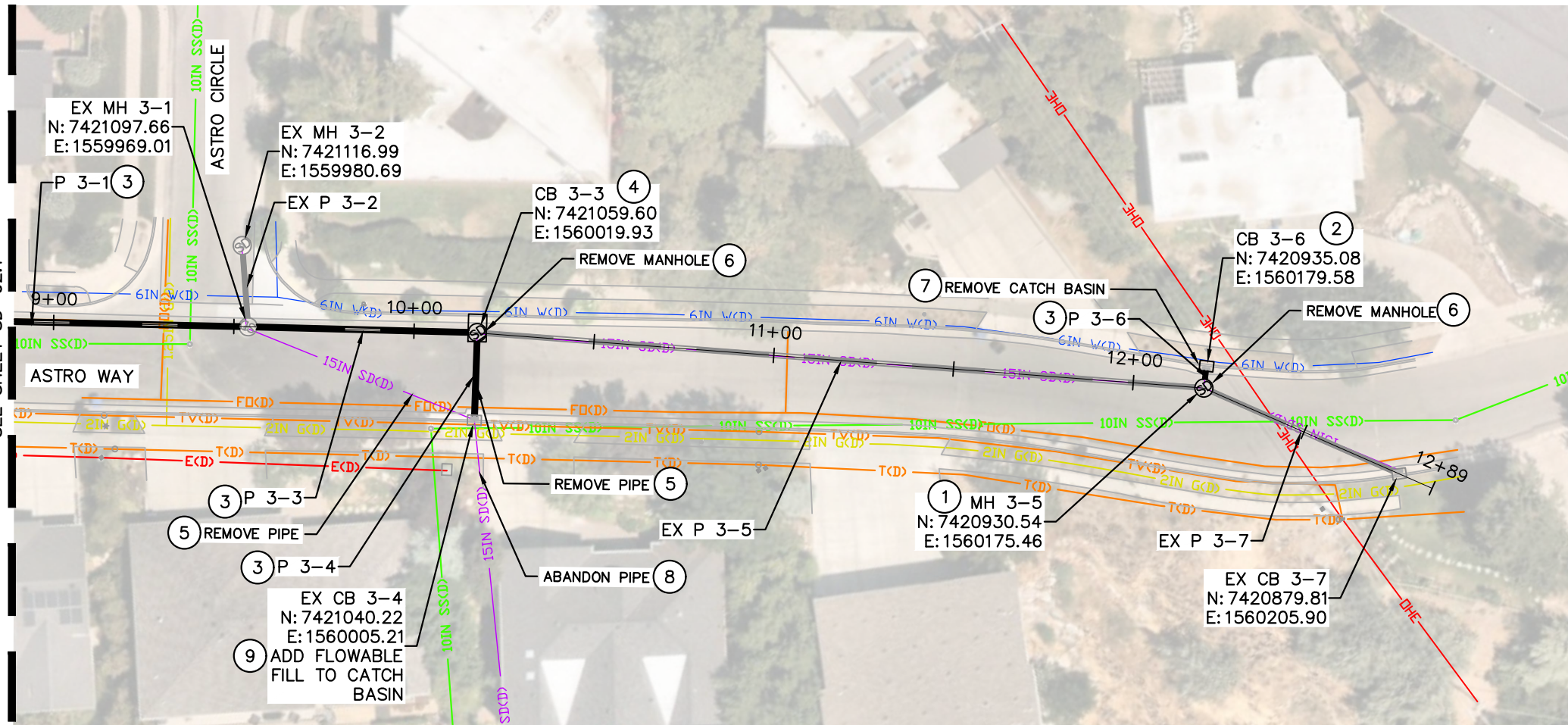
SHEET NUMBER  
SD-02.2



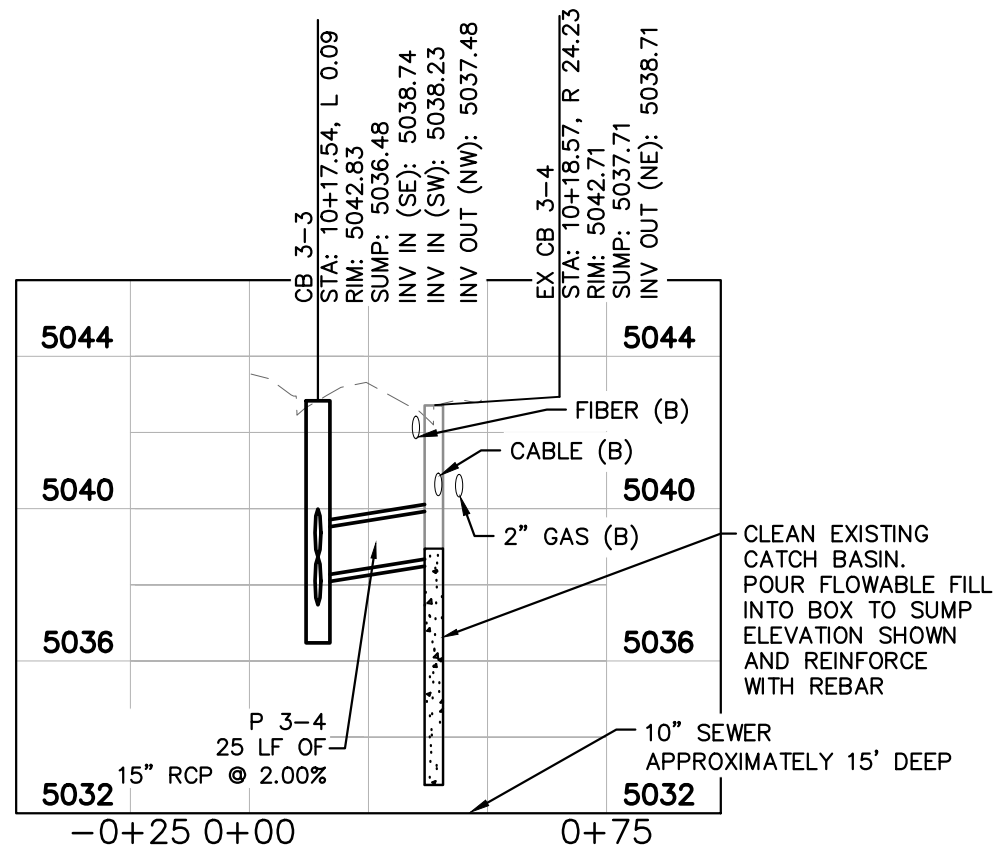




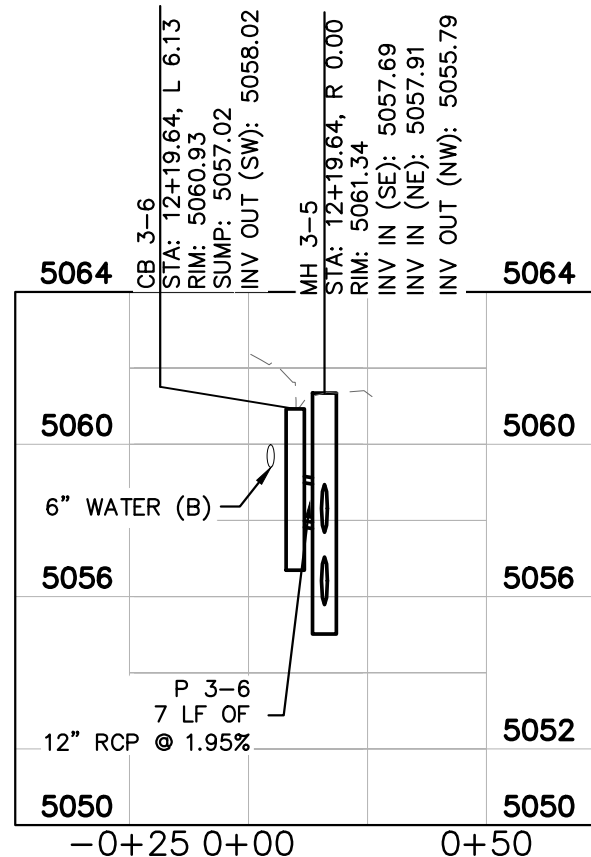
MATCHLINE STA: 8+86  
SEE SHEET SD-02.1



PLAN VIEW

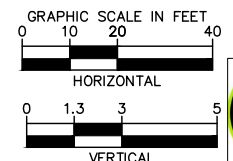


PROFILE VIEW



PROFILE NOTES:

- (A) SURVEYED UTILITY  
(B) ELEVATION UNKNOWN, PROTECT IN PLACE  
(C) ELEVATION VERIFIED BY TEST HOLE  
(D) ELEVATION ASSUMED FROM NEARBY TEST HOLE OR SURVEY



- 1) PRECAST MANHOLE STYLE B PER APWA STANDARD PLAN 341 [MH 3-5]
- 2) CATCH BASIN PER APWA STANDARD PLAN 315.1 [CB 3-6]
- 3) 15" REINFORCED CONCRETE PIPE [P 3-1] EX MH 3-1 TO CB 2-4 169 LF [P 3-3] CB 3-3 TO EX MH 3-1 64 LF [P 3-4] EX CB 3-4 CB 3-3 24 LF [P 3-6] CB 3-6 TO MH 3-5 6 LF
- 4) COMBINATION CATCH BASIN AND CLEANOUT BOX PER APWA STANDARD PLAN 316 [CB 3-3]
- 5) REMOVE PIPE N: 7421040.30 E: 1560005.25 TO N: 7421097.66 E: 1559968.38 69 LF N: 7421059.33 E: 1560019.78 TO N: 7421040.30 E: 1560005.25 25 LF
- 6) REMOVE MANHOLE N: 7421059.33 E: 1560019.78 N: 7420930.54 E: 1560175.46
- 7) REMOVE CATCH BASIN N: 7420931.72 E: 1560176.50
- 8) ABANDON PIPE N: 7421040.30 E: 1560005.25 10 LF
- 9) FLOWABLE FILL WITH REINFORCEMENT

NOTES:

- 1) MANHOLE LOCATIONS ARE CALLED OUT FROM CENTER OF STRUCTURE. CATCH BASIN LOCATIONS ARE CALLED OUT FROM THE CENTER OF THE GRATE EDGE ALONG THE FLOW LINE. COMBINATION CATCH BASIN AND CLEANOUT BOX LOCATIONS ARE CALLED OUT FROM THE CENTER OF THE ROUND FRAME AND COVER.
- 2) UTILITY LOCATIONS ARE APPROXIMATE AND BASED ON THE BEST AVAILABLE INFORMATION. CONTRACTOR IS RESPONSIBLE FOR LOCATING ALL UTILITIES PRIOR TO EXCAVATION.
- 3) CONTRACTOR TO COORDINATE AND LOOP EXISTING SERVICE LATERALS (GAS, COMM, WATER, ETC.) AS NEEDED FOR CONSTRUCTION. PROTECT IN PLACE ALL OTHER UTILITIES AND EXISTING DRAINAGE FEATURES NOT BEING RELOCATED UNLESS OTHERWISE NOTED.
- 4) PROFILES AND CROSS-SECTIONS ARE PROVIDED FOR INFORMATION ONLY TO ASSIST IN PIPE INSTALLATION.
- 5) MAINTAIN AND KEEP STORM DRAINAGE FEATURES OPERATIONAL AS NEEDED TO CONVEY DRAINAGE DURING CONSTRUCTION.
- 6) UNLESS OTHERWISE STATED, ALL STORM INFRASTRUCTURE IS TO CONFORM WITH APWA STANDARDS AND SPECIFICATIONS.
- 7) ALL PROPOSED APWA STRUCTURES REFERENCE THE APWA UTAH CHAPTER 2025 MANUAL OF STANDARD SPECIFICATIONS. CONTRACTOR TO USE MOST UPDATED APWA STANDARDS AT TIME OF CONSTRUCTION.

ASTRO WAY STORM DRAIN  
IMPROVEMENTS

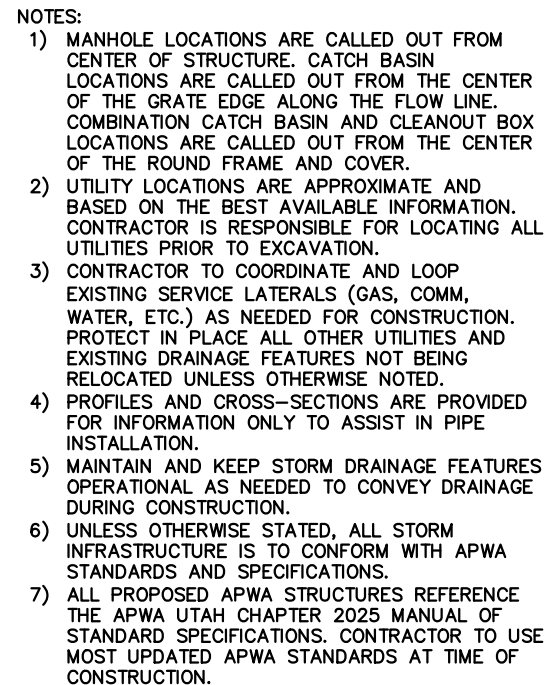
**Kimley»Horn**  
111 East Broadway, Suite 600 | Salt Lake City, UT 84111 | (385) 212-3776

PLAN AND  
PROFILE

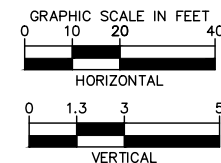
SHEET NUMBER

SD-03.1





### PROFILE VIEW



## ASTRO WAY STORM DRAIN IMPROVEMENTS

**Kimley»»Horn**

## PLAN AND PROFILE

SHEET NUMBER

**SD-03.2**

[illegible]

DRAWN BY:	EMH
DESIGNED BY:	EAP
CHECKED BY:	DWT