

## NOTICE AND AGENDA

Notice is hereby given that the Millville City Council will hold its regularly scheduled Council Meeting on Thursday, May 8, 2025, at the Millville City Office, 510 East 300 South in Millville, Utah, at 7:00 p.m.

1. Call to Order / Roll Call – Mayor Hair
2. Opening Remarks / Pledge of Allegiance – Councilmember Wilker
3. Approval of agenda
4. Approval of minutes of the last City Council Meeting – April 10, 2025
5. Agenda Items—
  - A. Public comment period (2 min/person)
  - B. PUBLIC HEARING – as close as possible to 7:15 p.m.
    - i. Global Industries Boundary Line Adjustment
  - C. Consideration of ordinance accepting the Global Industries Boundary Line Adjustment – Mayor Hair
  - D. Consideration of resolution to accept interlocal agreement with Cache County for administration of 2025 municipal election – Recorder Twedt
  - E. Consideration for a resolution accepting the Eames Annexation Petition – Recorder Twedt
  - F. County-wide indoor recreation study – Mayor Hair
  - G. Budget review for FY25 and FY26 – Recorder Twedt
  - H. Adoption of tentative FY26 Budget – Mayor Hair
  - I. City Reports: Roads, Parks, Water – Public Works Director Kendrick
  - J. Councilmember reports and other items for future agendas
6. Adjournment.

In compliance with the Americans with Disabilities Act, individuals needing special accommodations (including auxiliary communicative aids and services) during public meetings should notify Corey Twedt at (435) 881-2669 at least three days prior to the meeting.

This agenda was posted on May 6, 2025, to the City posting locations, the City Website, and the Utah Public Meeting Notices Website.

  
\_\_\_\_\_  
Corey Twedt, Recorder

**MILLVILLE CITY COUNCIL MEETING**  
**City Hall – 510 East 300 South – Millville, Utah**  
**April 10, 2025**

**PRESENT:** David Hair, Daniel Grange, Clay Wilker, Pamela June, Ryan Zollinger, Chad Kendrick, Corey Twedt, Maddie Soto, Nathan Lower, Kristi Walker, Bryan Low, Jeff Simmons

**Call to order/Roll call**

Mayor David Hair called the City Council Meeting to order for April 10, 2025, at 7:00 p.m. The roll call indicated Mayor David Hair and Councilmembers Pamela June, Daniel Grange, Clay Wilker, and Ryan Zollinger in attendance, with Councilmember Jeremy Ward excused.

**Opening remarks/Pledge of Allegiance**

Councilmember Grange welcomed everyone to the Council Meeting and led all present in the Pledge of Allegiance. He then offered a word of prayer.

**Approval of agenda**

The agenda for the meeting was reviewed. **Councilmember Wilker motioned to approve the agenda for April 10, 2025.** Councilmember June seconded. Councilmembers Wilker, Grange, June, and Zollinger voted yes, with Councilmember Ward excused. (A copy of the agenda is included as Attachment “A”.)

**Approval of minutes of the previous meeting**

The Council reviewed the minutes of the City Council Meeting on March 13, 2025.

**Councilmember Zollinger motioned to approve the minutes for March 13, 2025.**

Councilmember Grange seconded. Councilmembers Wilker, Grange, June, and Zollinger voted yes, with Councilmember Ward excused.

**Public comment period**

Nathan Lower signed up for the public comment portion of the meeting. He lives on 300 South and is concerned about the dust from the sewer construction. Mayor Hair and Councilmember Zollinger had been discussing the dust issue before the meeting and how the water truck would be here on Monday to help mitigate the issue. Nathan said that this answered his question.

Nathan said he is concerned about cars speeding on 300 South as well. He said that he has small kids and is worried about their safety. Nathan suggested that speed bumps may help with this concern. Mayor Hair addressed some of the issues with speed bumps and said

that the City has a policy clarifying why speed bumps won't be used on residential roads in Millville. Nathan asked about the possibility of adding a speed limit sign. Public Works Director Chad Kendrick said that some of the speed limit signs have still not been reinstalled with the ongoing sewer project, but that they will be back up soon.

### **911 Dispatch Service Agreement discussion**

911 Director Kristi Walker, Police Chief Jeff Simmons, and Brian Low from Logan City discussed the existing agreement and the need for an increase in the monthly rate. Kristi discussed where the initial rate came from. She said that they need twenty full-time employees to properly run the Dispatch Center. They are currently short and are trying to fill five open positions. She said that one of the reasons they are understaffed is the wages and competition with dispatch jobs from neighboring communities. She explained that it is difficult to find the right employees, as it is tough work and the training is intense.

The volume of calls was briefly discussed. The Dispatch Center is now receiving 20,000 more calls per year than it did in 2011.

Kristi said that the Dispatch Center is a separate enterprise fund for Logan City, and they pay for themselves. The revenue comes from this fee that is charged to all homes and businesses in the valley and from the small fee that is included on monthly cell phone bills.

Councilmember Zollinger discussed the new proposed rate versus the rate in 2002 when it was \$2 per home. Councilmember Wilker said that if they had kept up with the cost increases since the early 2000s, it seems like the rates would be much greater than what we are looking at with the proposed increases over the next five years. Councilmember Zollinger pointed out that the Dispatch Center staff has not increased as much as the population, which indicates that they are likely more effective.

Councilmember Zollinger and Kristi also talked through the fees that the Dispatch Center has to pay to Logan City.

Councilmember Grange asked if the rate increase was enough to be competitive in wages at the Dispatch Center. Kristi said that she thinks this will get them to where they need to be to be competitive. It was discussed that the feeling is that it is much better to be competitive with wages than to be stuck in the churn of trying to hire and train new employees all of the time. Chief Simmons said that the proposed increase would be enough to give a moderate increase to the employees.

### **Consideration of resolution updating 911 Dispatch Service Agreement and monthly 911 fee**

Mayor Hair reviewed the resolution for updating the monthly fee in Millville for 911 Dispatch Service.

**Councilmember Grange motioned to adopt Resolution 2025-7.** Councilmember Wilker seconded. Councilmembers Wilker, Grange, June, and Zollinger voted yes, with Councilmember Ward excused. (A copy of the adopted resolution is included as Attachment “B”).)

The Council thanked the representatives from Logan City for what they do for Millville and the rest of the community.

**CAPSA presentation on sexual abuse awareness**

Maddie Soto from CAPSA explained that April is Sexual Abuse Awareness Month. She read a brief message, and then she went through some of the statistics for Cache Valley that are tracked by CAPSA.

Mayor Hair thanked Maddie for coming to the meeting and providing an update to the City Council.

**800 West private water line**

Councilmember Zollinger has a conflict of interest for this agenda item. He recused himself from this item and went to sit in with the audience as is required by the Millville Conflict of Interest Policy.

Mayor Hair reviewed the status of the County project to build a trail along 800 West. A portion of the route for this trail borders Millville City near the Global Industries Zollinger property. When this all began, the Zollingers dedicated some of their property for the trail. The engineers on this project have now moved the alignment of the trail and are asking for additional property from the Zollingers. The Zollingers own a private water line that is underneath the new alignment. The Zollingers expect that at some point, they will need to make repairs to their water line. If they give up more property for the trail, the question is who should pay for repairs to the concrete trail if the Zollinger water line needs repairs in the future.

As has been the consistent message from the City Council, as this is not a project that the City has pursued, the City is not willing to assume any costs.

**Councilmember Grange motioned that Millville should contact the sponsors of this project and ask them to make arrangements or a payment to the Zollingers now to compensate them for future maintenance on the trail or to move the water line before the trail is installed. Millville City will not commit to covering the costs of future maintenance or repairs on this trail.** Councilmember Wilker seconded. Councilmembers Wilker, Grange, and June voted yes. Councilmember Zollinger abstained, and Councilmember Ward was excused. (A copy of the related staff report is included as Attachment “C”).)



**Consideration of resolution updating the Park Use Policy**

Recorder Twedt reviewed the minor updates to the Park Use Policy. The new draft adds prices for renting out the new pavilion that is under construction and clarifies that the park is not available in the spring before April.

Councilmember Wilker briefly discussed the rentals and how many are residents versus those that are non-residents.

Councilmember June pointed out a typo on the Parks Use Policy that was corrected during the meeting.

**Councilmember June motioned to adopt Resolution 2025-6.** Councilmember Zollinger seconded. Councilmembers Wilker, Grange, June, and Zollinger voted yes, with Councilmember Ward excused. (A copy of the adopted resolution is included as Attachment “D”).

**Consideration of a resolution setting sewer rates for non-residents**

Recorder Twedt reviewed the draft resolution that would set sewer rates for non-residents who are permitted to connect to the Millville sewer system.

The Council discussed concerns with payment collection for non-residents if we don’t control their water. The Council said that if the family who has received approval is going to connect to the Millville sewer system, they would need to pay for an agreement to be drafted by the City attorney so that we can ensure the City is protected. This agreement should include consideration for periodic inspections to confirm that extra water is not being pumped into the sewer pipes, as this area has a high water table.

**Councilmember Grange motioned to adopt Resolution 2025-8 with the changes made during the meeting.** Councilmember Zollinger seconded. Councilmembers Wilker, Grange, June, and Zollinger voted yes, with Councilmember Ward excused. (A copy of the adopted resolution is included as Attachment “E”).

**Law Enforcement Agreement Addendum**

Mayor Hair reviewed the addendum to the existing agreement between Millville City and the Cache County Sheriff’s Department for law enforcement services in Millville. He explained that this was the agreement based on what was discussed with Sheriff Jensen at the previous City Council meeting.

**Councilmember Zollinger motioned to approve the addendum to the agreement with the Sheriff’s Department.** Councilmember Grange seconded. Councilmembers Wilker, Grange, June, and Zollinger voted yes, with Councilmember Ward excused. (A copy of the approved agreement addendum is included as Attachment “F”).

**Review of utility adjustments for the third quarter of Fiscal Year 2025**

Recorder Twedt reviewed the utility adjustments for the last quarter. There were no concerns from the City Council with the adjustments that had been made.

**Review of budget through the third quarter of Fiscal Year 2025**

Recorder Twedt reviewed the budget for the fiscal year through the end of March.

On the revenue side, he discussed the continued high-interest rate revenue that is coming in. He reviewed the money received from the fee in lieu of water shares for the three subdivisions that have occurred this year. This revenue is really important to the City to continue to plan for needed water infrastructure.

The cost for the audit was higher this year, with the requirement for the Single Audit and dealing with all of the sewer adjustments. This will be the case next year as well.

Recorder Twedt said that he feels like the City is doing well financially and that he didn't have any major budgetary concerns. (A copy of the budget review is included with the minutes as Attachment "G".)

**City Reports**

Director of Public Works Chad Kendrick said that the parks are getting busy again. 132 soccer games will be held at Millville parks over the next six weeks. The new pavilion hasn't progressed quickly over the last couple of weeks, but it is expected to be standing by early May. As discussed previously, the roads are super dusty right now. The water truck is scheduled to be here on Monday and will be working full time to try and reduce dust in the air. There isn't too much remaining with the sewer project. There are four crews currently working on laterals. Power will be pulled into the sewer lift station over the next week or two.

**Councilmember Reports and Items for Future Agendas**

(A copy of the Councilmember Assignments List is included with the minutes as Attachment "H".)

Councilmember Wilker said that at his home, they have had some issues with the baseball field lights again. The lights have been on really late a couple of times, and the music volume seems to be kicking back up. He said that he thinks the school should fix the chain link fence between the school and the neighboring properties. Councilmember Zollinger said he would reach out to the school.

Councilmember June said that she has been coordinating with the Youth Council. They are working on their end-of-year event. They would like to invite the City Council to attend

and invite or bring additional youth who might benefit from participating in the Youth Council. The Youth Council is also planning to run a children's day camp.

Councilmember June said that she is concerned that residents are not obeying leash laws with their dogs. The Council asked Recorder Twedt to include a note about this in the next City newsletter.

Director Kendrick said that the Caspersens are unhappy with the new lights on the tennis courts. Councilmember Grange said that the lights are not an issue for him. Director Kendrick said that he is planning to see if a hood could be added to the lights or if they could be better directed to reduce the impact on the Caspersens.

### **Adjournment**

**Councilmember Zollinger moved to adjourn the meeting.** Councilmember Wilker seconded. Councilmembers Wilker, Grange, June, and Zollinger voted yes, with Councilmember Ward excused. The meeting adjourned at 8:38 p.m.



## **AGENDA REPORT: ZOLLINGER COMMERCIAL BLA**

**May 8, 2025**

---

### **Background**

Millville received a municipal boundary line adjustment (BLA) application from Lance Zollinger to adjust some of the boundaries between Millville and Logan in the Zollinger Complex. There are four parcels that are affected by the adjustment, which essentially just aligns the city boundaries with the existing parcel boundaries. The map below shows the pieces in Millville that would go to Logan (red) and the one in Logan that would go to Millville (blue).

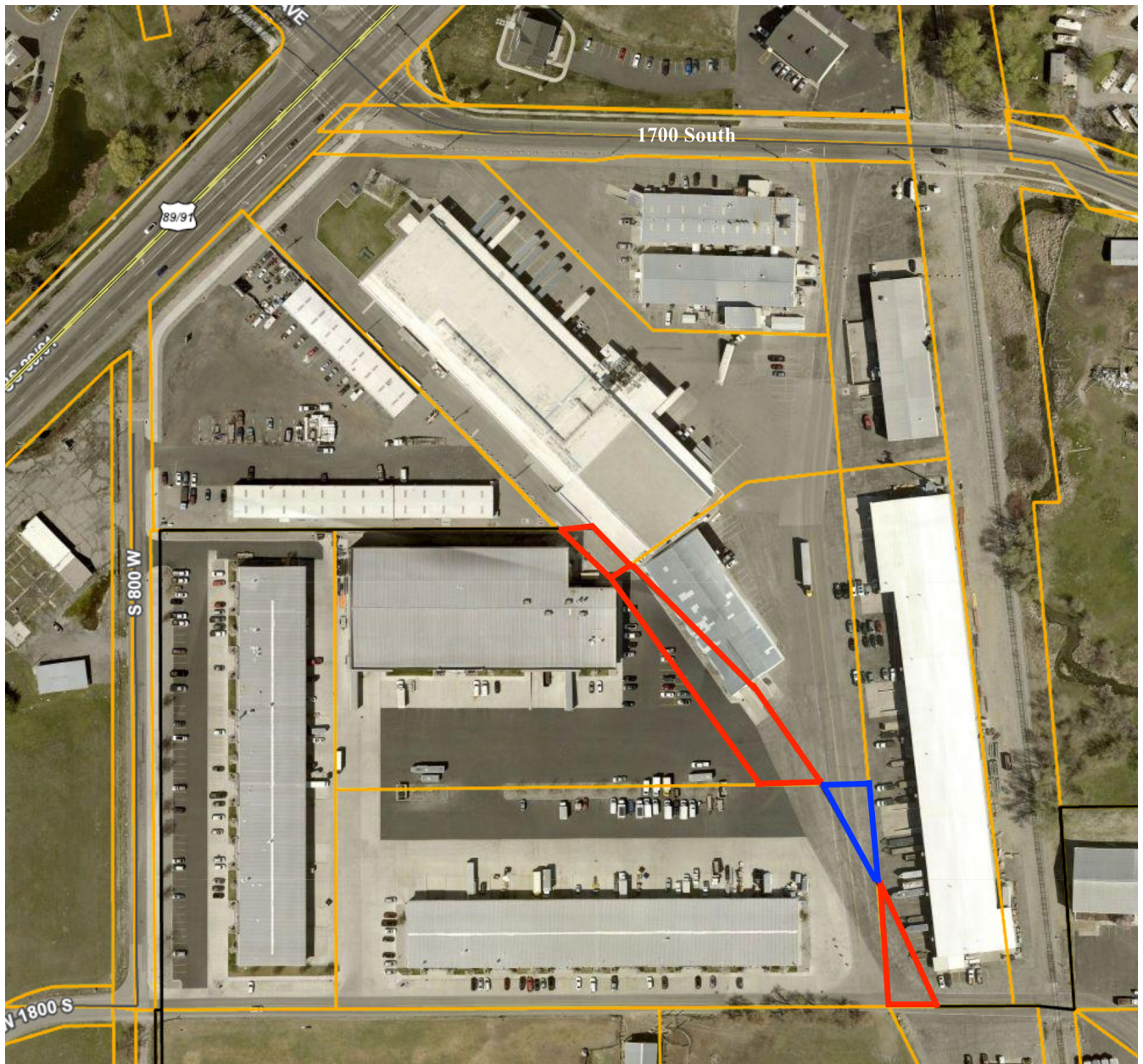
From a very high level, this is the process that occurs for a municipal boundary adjustment:

- Both cities adopt a resolution of intent to adjust boundaries
- Wait 60 days, do all the proper noticing, and then each city holds a public hearing
- After hearings, both cities adopt ordinances
- Notice is sent to the office of Lt. Governor with required documentation; Lt. Governor issues a certificate
- Recording is done with the County Recorder after receiving certificate from Lt. Governor

On February 13, 2025, the Council adopted the initial resolution of intent. Noticing has been completed by both cities in compliance with State Code. Tonight, a public hearing will be held to see if there are any concerns from the public. Then, the Council will consider an ordinance for acceptance of the boundary line adjustment.

### **Included Documents**

- Ordinance 2025-2 – Draft
- Resolution 2025-3 – previously approved
- Zollinger BLA Application



**MILLVILLE CITY  
ORDINANCE 2025-2**

**GRANTING THE BOUNDARY LINE ADJUSTMENT INVOLVING  
MILLVILLE CITY AND LOGAN CITY**

WHEREAS, UCA § 10-2-419(1) allows the legislative bodies of two or more municipalities having common boundaries to adjust their common boundaries; and

WHEREAS, the Millville City Council finds that it is in the best interest of Millville to adjust the boundary between the City of Millville and the City of Logan; and

WHEREAS, the Notice of Boundary Line Adjustment was published as required by State law; and

WHEREAS, the Millville City Council advertised and held a public hearing to review the boundary line adjustment on May 8, 2025;

NOW, THEREFORE, BE IT ORDAINED that the following boundary line adjustment is declared by the Millville City Council:

Property identified as parcels, or portions thereof, 02-089-0014, 02-089-0015, 02-089-0025, 02-089-0033, and 02-089-0041, in the parcel records of Cache County, State of Utah, located at approximately 695 East 1700 South in Logan, Utah and comprising approximately 15.86 acres, and legally described as:

An adjusted Corporate Limit Line located in Section 9, Township 11 North, Range 1 East, Salt Lake Meridian, situated in Cache County, Utah, described as follows:

Commencing at the Southwest Corner of said Section; Thence S89°48'10"E 1007.09 Feet, more or less, along the South Line of said Section to the Point of Beginning, said point also being the Southwest corner of the Property Annexed to Logan City as shown and described on the Plat filed in Entry Number 449846; Thence N89°48'10"W 58.73 Feet to the Southeast corner of Parcel 02-089-0041 as described in Entry Number 1110651; Thence N4°40'41"W 281.35 Feet along the East Line of Said Parcel to the Northeast Corner of said Parcel; Thence S89°45'51"W 137.68 Feet along the North Line of said Parcel to the Southeast corner of Parcel 02-089-0014 as described in Entry Number 1110653; Thence along the Easterly Line of said Parcel the following two courses: 1. N35°22'34"W 319.04 Feet; 2. N47°09'08"W 93.66 Feet, more or less, to the Northeast Corner of said Parcel and the Point of Terminus, said Point being on the Existing Common Corporate Limit Line of Logan City and Millville City.

This ordinance shall become effective when both Millville City and Logan City have adopted a boundary line adjustment ordinance and upon certification by the Utah Lieutenant Governor.

ADOPTED AND PASSED, by the MILLVILLE CITY COUNCIL this 8<sup>th</sup> day of May 2025.

MILLVILLE CITY

\_\_\_\_\_  
David Hair, Mayor

ATTEST:

\_\_\_\_\_  
Corey Twedt, City Recorder

COUNCILMEMBER	YES	NO	ABSENT	ABSTAIN
Jeremy Ward				
Daniel Grange				
Clay Wilker				
Pamela June				
Ryan Zollinger				

POSTED: \_\_\_\_\_

**MILLVILLE CITY  
RESOLUTION 2025-3**

**RESOLUTION STATING MILLVILLE CITY'S INTENT TO ADJUST A COMMON  
BORDER BETWEEN MILLVILLE CITY AND LOGAN CITY INVOLVING PARCELS  
02-089-0024, 02-089-0033, 02-089-0041, 02-089-0015**

WHEREAS, UCA § 10-2-419(1) allows the legislative bodies of two or more municipalities having common boundaries to adjust their common boundaries; and

WHEREAS UCA § 10-2-419(2)(a) requires each municipality intending to adjust a boundary that is common with another municipality adopt a resolution indicating the intent of the municipal body to adjust a common boundary; and

WHEREAS on January 8, 2025, Millville City received a request from Lance Zollinger to adjust a common municipal boundary line between Millville City and Logan City as shown on the included plat; and

THEREFORE, BE IT RESOLVED by the Millville City Council that:

It is the intent of the Millville City Council to adjust a common municipal boundary line with Logan City with this updated legal description:

AN ADJUSTED CORPORATE LIMIT LINE LOCATED IN SECTION 9, TOWNSHIP 11 NORTH, RANGE 1 EAST, SALT LAKE MERIDIAN, SITUATED IN CACHE COUNTY, UTAH, DESCRIBED AS FOLLOWS:

COMMENCING AT THE SOUTHWEST CORNER OF SAID SECTION;  
THENCE S89°48'10"E 1007.09 FEET, MORE OR LESS, ALONG THE SOUTH LINE OF SAID SECTION TO THE POINT OF BEGINNING, SAID POINT ALSO BEING THE SOUTHWEST CORNER OF THE PROPERTY ANNEXED TO LOGAN CITY AS SHOWN AND DESCRIBED ON THE PLAT FILED IN ENTRY NUMBER 449846;  
THENCE N89°48'10"W 58.73 FEET TO THE SOUTHEAST CORNER OF PARCEL 02-089-0041 AS DESCRIBED IN ENTRY NUMBER 1110651;  
THENCE N4°40'41"W 281.35 FEET ALONG THE EAST LINE OF SAID PARCEL TO THE NORTHEAST CORNER OF SAID PARCEL;  
THENCE S89°45'51"W 137.68 FEET ALONG THE NORTH LINE OF SAID PARCEL TO THE SOUTHEAST CORNER OF PARCEL 02-089-0014 AS DESCRIBED IN ENTRY NUMBER 1110653;  
THENCE ALONG THE EASTERLY LINE OF SAID PARCEL THE FOLLOWING TWO COURSES:

1. N35°22'34"W 319.04 FEET;
2. N47°09'08"W 93.66 FEET, MORE OR LESS, TO THE NORTHEAST CORNER OF SAID PARCEL AND THE POINT OF TERMINUS, SAID POINT BEING ON THE



EXISTING COMMON CORPORATE LIMIT LINE OF LOGAN CITY AND  
MILLVILLE CITY.

Passed and approved by the Millville City Council this 13th day of February 2025.

SIGNED:

  
\_\_\_\_\_  
David Hair, Mayor

ATTEST:

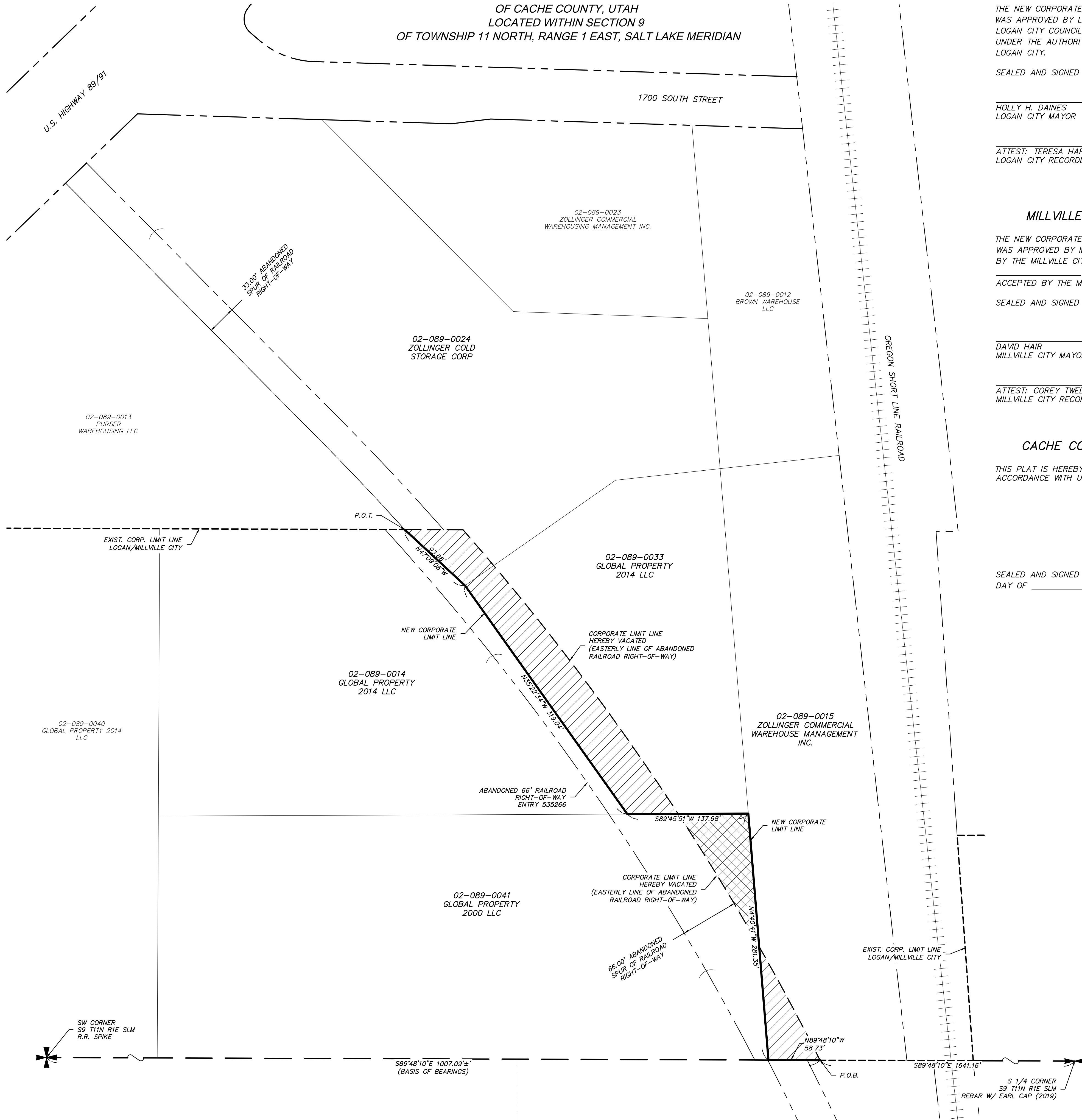
  
\_\_\_\_\_  
Corey Twedt, City Recorder



COUNCILMEMBER	YES	NO	ABSENT	ABSTAIN
Jeremy Ward	X			
Pamela June	X			
Ryan Zollinger				X
Clay G. Wilker			X	
Daniel Grange	X			

1/7/2025 4:55 PM Z:\2017 PROJECTS\17005ZOL LANCE ZOLLINGER SITE PLAN - 1950S 800W MILLVILLE, UT\ACAD\SURVEY\ANNEXATION PLAT\17005ZOL CORPORATE LIMIT LINE ADJUSTMENT (CURRENT).DWG

CORPORATE LIMIT LINE ADJUSTMENT  
BETWEEN LOGAN CITY AND MILLVILLE CITY  
OF CACHE COUNTY, UTAH  
LOCATED WITHIN SECTION 9  
OF TOWNSHIP 11 NORTH, RANGE 1 EAST, SALT LAKE MERIDIAN



LOGAN CITY APPROVAL AND ACCEPTANCE

THE NEW CORPORATE LIMITS OF LOGAN CITY SHOWN AND DESCRIBED HEREON WAS APPROVED BY LOGAN CITY ORDINANCE NUMBER \_\_\_\_\_ BY THE LOGAN CITY COUNCIL ON THE \_\_\_\_\_ DAY OF \_\_\_\_\_, 2025, AND UNDER THE AUTHORITY THEREOF, IS HEREBY ACCEPTED BY THE MAYOR OF LOGAN CITY.

SEALED AND SIGNED THIS \_\_\_\_\_ DAY OF \_\_\_\_\_, 20\_\_\_\_

HOLLY H. DAINES  
LOGAN CITY MAYOR

ATTEST: TERESA HARRIS  
LOGAN CITY RECORDER

MILLVILLE CITY APPROVAL AND ACCEPTANCE

THE NEW CORPORATE LIMITS OF MILLVILLE CITY SHOWN AND DESCRIBED HEREON WAS APPROVED BY MILLVILLE CITY ORDINANCE NUMBER \_\_\_\_\_ BY THE MILLVILLE CITY COUNCIL ON THE \_\_\_\_\_ DAY OF \_\_\_\_\_, 2025, AND UNDER THE AUTHORITY THEREOF, IS HEREBY ACCEPTED BY THE MAYOR OF MILLVILLE CITY.

SEALED AND SIGNED THIS \_\_\_\_\_ DAY OF \_\_\_\_\_, 20\_\_\_\_

DAVID HAIR  
MILLVILLE CITY MAYOR

ATTEST: COREY TWEDT  
MILLVILLE CITY RECORDER

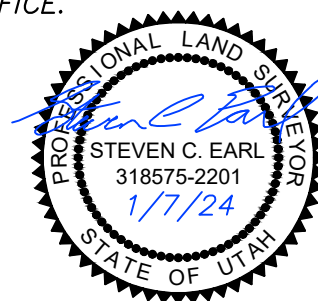
CACHE COUNTY DEPUTY SURVEYOR APPROVAL

THIS PLAT IS HEREBY APPROVED AS A FINAL LOCAL ENTITY PLAT IN ACCORDANCE WITH UTAH CODE TITLE 17, CHAPTER 23, SECTION 20.

SEALED AND SIGNED THIS \_\_\_\_\_ DAY OF \_\_\_\_\_, 20\_\_\_\_  
CACHE COUNTY DEPUTY SURVEYOR

SURVEYOR'S CERTIFICATE

I, STEVEN C. EARL, HOLDING LICENSE NUMBER 318575-2201 UTAH CODE TITLE 58, CHAPTER 22, PROFESSIONAL ENGINEERS AND LAND SURVEYORS LICENSING ACT, HAVE COMPLETED A PLAT OF ANNEXATION TO THE CORPORATE LIMITS OF PROVIDENCE CITY AND NORTH LOGAN CITY IN ACCORDANCE WITH UTAH CODE TITLE 17, CHAPTER 23, SECTION 20, SUBSECTION (4), AND HAVE ACCURATELY REPRESENTED THE TRACTS OF LAND SHOWN AND DESCRIBED HEREON BASED UPON DATA COMPILED FROM FIELD EVIDENCE AND THE RECORDS OF THE CACHE COUNTY RECORDER'S OFFICE.



CORPORATE LIMIT LINE ADJUSTMENT DESCRIPTION

AN ADJUSTED CORPORATE LIMIT LINE LOCATED IN SECTION 9, TOWNSHIP 11 NORTH, RANGE 1 EAST, SALT LAKE MERIDIAN, SITUATED IN CACHE COUNTY, UTAH, DESCRIBED AS FOLLOWS:

COMMENCING AT THE SOUTHWEST CORNER OF SAID SECTION; THENCE S89°48'10\"/>

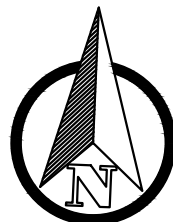
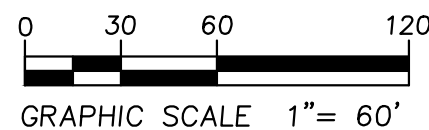
SURVEYOR'S NARRATIVE

THIS PLAT WAS ORDERED BY LANCE ZOLLINGER FOR THE PURPOSE OF RELOCATING A PORTION OF THE BOUNDARY BETWEEN THE TWO MUNICIPAL ENTITIES. THE PREVIOUS BOUNDARY LINE HAD BEEN DEFINED BY THE EASTERLY LINE OF THE OREGON SHORT LINE RAILROAD RIGHT-OF-WAY, WHICH HAS SINCE BEEN ABANDONED. THIS PLAT SERVES TO ADJUST THE BOUNDARY TO BE IN ACCORDANCE WITH THE EXISTING PARCEL BOUNDARIES FOR PARCELS 02-089-0041, 02-089-0014, 02-089-0015, 02-089-0033, AND 02-089-0024 AS THEY HAVE BEEN RECORDED IN ENTRIES 1110651, 1110652, 1110653, AND 1110655. THE BOUNDARIES OF SAID PARCELS ADJOINING THE ADJUSTED CORPORATE LIMIT LINE APPEAR TO HAVE ORIGINATED FROM RECORD OF SURVEY 2019-0161.

THE BASIS OF BEARINGS USED WAS THE UTAH STATE PLANE COORDINATE SYSTEM, NAD83, NORTH ZONE GRID.

LEGEND

- AREA HEREBY ANNEXED TO LOGAN CITY
- AREA HEREBY ANNEXED TO MILLVILLE CITY
- UNCHANGED CORPORATE LIMIT LINE
- NEW CORPORATE LIMIT LINE
- CORPORATE LIMIT LINE HEREBY VACATED
- PARCEL LINE
- RIGHT-OF-WAY LINE
- SECTION LINE



COUNTY RECORDER

COUNTY RECORDER'S NO. \_\_\_\_\_  
STATE OF UTAH, COUNTY OF CACHE,  
RECORDED AND FILED AT THE REQUEST  
OF \_\_\_\_\_  
THIS \_\_\_\_\_ DAY OF \_\_\_\_\_  
20\_\_\_\_ AT \_\_\_\_\_ IN BOOK OF PLATS  
INDEX \_\_\_\_\_ FEE \_\_\_\_\_  
COUNTY RECORDER

S9 T11N R1E SLM

CORPORATE LIMIT LINE ADJUSTMENT  
BETWEEN LOGAN CITY  
& MILLVILLE CITY



Cache • Landmark  
Engineers  
Surveyors  
Planners

95 W. Golf Course Rd.  
Suite 101  
Logan, UT 84321  
435.713.0099

DATE:  
7 JANUARY 2025

SCALE:  
1" = 60'

DRAFTED BY:  
L. HEGEMANN

CHECKED BY:  
S. EARL

APPROVED BY:  
S. EARL

PROJECT NUMBER:  
17005ZOL





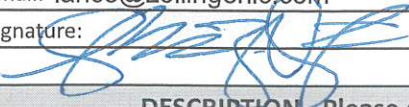
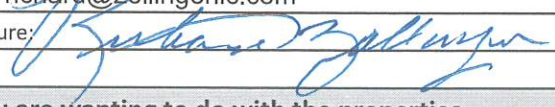
# MILLVILLE CITY

## MUNICIPAL BOUNDARY LINE ADJUSTMENT APPLICATION

### APPLICANT INFORMATION

Name of Applicant (Last, First): Zollinger, Lance	Today's Date: 1/8/25
Street Address: 695 W 1700 S, BLDG 7, Logan, UT 84321	
Mailing Address: 695 W 1700 S, BLDG 7, Logan, UT 84321	
Daytime Phone: (435)770-2450	Email: lance@zollingerllc.com

### PROPERTY INFORMATION AFFECTED BY BOUNDARY LINE ADJUSTMENT

Property Owner: Lance Zollinger	Property Owner: Richard Zollinger
Street Address: 695 W 1700 S, BLDG 7, Logan, UT 84321	Street Address: 695 W 1700 S, BLDG 7, Logan, UT 84321
Mailing Address: 695 W 1700 S, BLDG 7, Logan, UT 84321	Mailing Address: 695 W 1700 S, BLDG 7, Logan, UT 84321
Daytime Phone: (435)770-2450	Daytime Phone: (435)760-1456
Email: lance@zollingerllc.com	Email: richard@zollingerllc.com
Signature: 	Signature: 

### DESCRIPTION - Please describe in detail what you are wanting to do with the properties.

Adjust the municipal boundary line to match the existing parcel boundaries as recorded.

### Attached Documents:

- ☐ Legal Descriptions
- ☐ Drawing(s) of existing and proposed boundary lines

### Fee Payment:

- ☐ \$250 Application Fee (Resolution 2024-21)

Note: All engineering or legal associated costs (if needed), will be the responsibility of the applicant in addition to the application fee.

## **CORPORATE LIMIT LINE ADJUSTMENT LEGAL DESCRIPTION**

AN ADJUSTED CORPORATE LIMIT LINE LOCATED IN SECTION 9, TOWNSHIP 11 NORTH, RANGE 1 EAST, SALT LAKE MERIDIAN, SITUATED IN CACHE COUNTY, UTAH, DESCRIBED AS FOLLOWS:

COMMENCING AT THE SOUTHWEST CORNER OF SAID SECTION;

THENCE S89°48'10"E 1007.09 FEET, MORE OR LESS, ALONG THE SOUTH LINE OF SAID SECTION TO THE POINT OF BEGINNING, SAID POINT ALSO BEING THE SOUTHWEST CORNER OF THE PROPERTY ANNEXED TO LOGAN CITY AS SHOWN AND DESCRIBED ON THE PLAT FILED IN ENTRY NUMBER 449846;

THENCE N89°48'10"W 58.73 FEET TO THE SOUTHEAST CORNER OF PARCEL 02-089-0041 AS DESCRIBED IN ENTRY NUMBER 1110651;

THENCE N4°40'41"W 281.35 FEET ALONG THE EAST LINE OF SAID PARCEL TO THE NORTHEAST CORNER OF SAID PARCEL;

THENCE S89°45'51"W 137.68 FEET ALONG THE NORTH LINE OF SAID PARCEL TO THE SOUTHEAST CORNER OF PARCEL 02-089-0014 AS DESCRIBED IN ENTRY NUMBER 1110653;

THENCE ALONG THE EASTERLY LINE OF SAID PARCEL THE FOLLOWING TWO COURSES:

1. N35°22'34"W 319.04 FEET;
2. N47°09'08"W 93.66 FEET, MORE OR LESS, TO THE NORTHEAST CORNER OF SAID PARCEL AND THE POINT OF TERMINUS, SAID POINT BEING ON THE EXISTING COMMON CORPORATE LIMIT LINE OF LOGAN CITY AND MILLVILLE CITY.



## **AGENDA REPORT: COUNTY CONTRACT FOR 2025 ELECTION    May 8, 2025**

---

### **Background**

Almost all cities throughout the State of Utah now contract with their counties to administer the municipal elections, as Millville did for the 2021 and 2023 municipal elections. As Cache County is responsible for the elections that happen in the County, they are aware of all of the requirements and have the equipment to read ballots.

It is recommended that the City sign the interlocal agreement with the County for administration of the municipal election again this year.

### **Included Documents**

- Resolution 2025-9, including the Interlocal Agreement

**MILLVILLE CITY  
RESOLUTION 2025-9**

**APPROVING AN AGREEMENT WITH CACHE COUNTY FOR  
ADMINISTRATION OF THE 2025 MUNICIPAL ELECTION**

WHEREAS, Cache County has offered to help administer the Millville City 2025 Municipal Election; and

WHEREAS, the Millville City Council has determined that Millville City would benefit by contracting with Cache County to assist in the administration of the 2025 municipal election;

NOW THEREFORE, be it resolved by the Millville City Council that the attached contract for services between Cache County and Millville City is hereby approved.

Passed and approved by the Millville City Council this 8<sup>th</sup> day of May 2025.

SIGNED:

\_\_\_\_\_  
David Hair, Mayor

ATTEST:

\_\_\_\_\_  
Corey Twedt, City Recorder

COUNCILMEMBER	YES	NO	ABSENT	ABSTAIN
Jeremy Ward				
Daniel Grange				
Clay Wilker				
Pamela June				
Ryan Zollinger				

AMENDMENT TO THE 2025 INTERLOCAL COOPERATION AGREEMENT REGARDING  
FULL ELECTION SERVICES  
BETWEEN CACHE COUNTY AND MILLVILLE CITY

This Amendment is made and entered into this \_\_\_\_ day of \_\_\_\_\_, 2025, by and between Cache County (the “County”) and Millville City (the “Municipality”). The original Agreement having been entered into on \_\_\_\_ day of \_\_\_\_\_, 2025. The aforementioned Interlocal Agreement is hereby amended to incorporate the following exhibit regarding costs:

Exhibit A

2025 MUNICIPAL ELECTION  
Cost Breakdown Table and Election Cost Estimate

**MILLVILLE CITY**

The expenses below are associated with administering the municipal election and are not entirely inclusive of all potential costs.

Total Number of Precincts in Municipality	2
Total Number of active voters in Municipality	1,319

<b>FIXED COSTS FOR EACH BALLOT</b>		
11-14" Ballot	\$ 0.25	Per mailing to voter
Insertion	\$ 0.20	Per mailing to voter
Outgoing Envelope	\$ 0.12	Per mailing to voter
Reply Envelope	\$ 0.12	Per mailing to voter
Voter Instruction Sheet	\$ 0.10	Per mailing to voter
Postage Outgoing	\$ 0.24	Per mailing to voter
Database/ Election Setup	\$ 0.05	Per active registered voter
Site Support (ES&S)	\$ 0.07	Per active registered voter
<b>FIXED COSTS FOR EACH RETURNED BALLOT</b>		
Poll Worker / Staff Wages	\$ 0.25	Per ballot received
Election Supplies	\$ 0.03	Per ballot received
Signature Verification	\$ 0.25	Per ballot received
<b>Total</b>	<b>\$ 1.68</b>	Cost per voter at 100%
<b>SET UP COSTS</b>		Cost per precinct
Coding (MBV)	\$ 45.92	Cost per precinct
Ballot Layout	\$ 45.30	Cost per precinct

<b>VARIABLE COSTS*</b>		
Postage Incoming	\$ 0.76	Per piece mailed to clerk
Postage Undeliverable	\$ 0.76	Per piece mailed to clerk
Recount (If necessary)	\$ 480.00	Flat Fee



Estimate of Fixed Costs	\$ 2,862.23
Total Set Up Costs	\$ 182.44

Primary	\$ 3,044.67
General	\$ 3,044.67

Estimated Costs as of April 11, 2025	\$ 6,089.34
--------------------------------------	-------------

\*In addition to the fixed costs associated with election administration, there are variable costs that can impact the overall budget—specifically, the costs related to mail returned with postage due and undeliverable mail.

When vote-by-mail ballots are sent out, there is a risk that some may be returned as undeliverable or with insufficient postage. These returns generate additional expenses not accounted for in the fixed cost estimates. For example, if we assume that 10% of ballots are returned as undeliverable and with postage due, this would result in approximately **131** ballots requiring additional processing.

At a postage due rate of \$0.76 per ballot, this would result in an added cost of **\$99.56**. This cost is purely for the return postage and does not include labor or materials associated with processing the returned mail.

In the event of a recount, there would be an **additional flat-rate cost of \$480.00**. This cost would be incurred regardless of the number of ballots and represents the cost of staffing for an additional 1.5 days.

CACHE COUNTY

---

David N. Zook  
Cache County Executive

Attest:

---

Bryson J. Behm  
Cache County Clerk

Date: \_\_\_\_\_

---

MUNICIPALITY

---

Mayor

---

Date

---

Clerk

---

Date



## AGENDA REPORT: EAMES ANNEXATION

May 8, 2025

### Background

LA Zollinger & Sons (represented by Richard Zollinger) owns parcel 03-035-0027, and EBECO Properties (represented by Ezra Eames) owns parcel 03-035-0026 on the southwest side of Millville. The Zollinger property and a portion of the Eames property are in the County bordering Millville City, and they would like to annex them into Millville. The total combined property being requested for annexation is 1.29 acres. The request is for this to be annexed into Millville zoned as Residential R2.

Planning and Zoning has reviewed the annexation petition and could not approve it because of a Millville City ordinance that was passed in 2018, adding the following language to Millville City Code:

**J. Any property south of 400 South currently zoned as Agriculture (A), or any property south of 400 South annexed into city limits as Agriculture (A), that wants to be considered for a residential zone will only be considered as a Residential (R-3) Zone.**

The Planning Commission has asked that the City Council review the requested annexation and decide if it should be allowed to proceed through the approval process.

In the meeting, we will discuss the issues that staff find with this ordinance that was passed with a split vote, and the Council can determine if they want to keep it as it is or revise the code.

If the Council decides to move forward and allow the annexation, a resolution has been prepared for your consideration. As always, this is not acceptance of the actual annexation, but just a go-ahead to begin the formal annexation process with the County.

After more due diligence is done by the City and the County, review and approval are complete, the Millville City Council will hold a public hearing and then can choose if they would like to adopt the annexation by ordinance.

### Included Documents

- Resolution 2025-10 – Cold Storage Annexation
- Annexation Petition including map of area to be annexed
- Ordinance 2018-9 – Code change adding language regulating property south of 400 South

**MILLVILLE CITY  
RESOLUTION 2025-10**

**ACCEPTING THE EAMES PETITION FOR ANNEXATION OF CERTAIN REAL PROPERTY UNDER THE PROVISIONS OF SECTION 10-2-405, UTAH CODE ANNOTATED, 1953, AS AMENDED.**

WHEREAS, on April 10, 2025, the owners of certain real property (petitioners) filed a petition with the City Recorder of Millville City, Cache County, State of Utah, requesting that such property be annexed to the corporate boundaries of Millville City; and

WHEREAS, said petition contains the signatures of the owners of private real property that is: 1) located within the area proposed for annexation; 2) covers a majority of the private land area within the area proposed for annexation; and 3) is equal in value to at least one-third of the value of all the private real property within the area proposed for annexation; and

WHEREAS, the petitioners certify that said property proposed for annexation lies contiguous to the present boundaries of Millville City and does not live within the boundaries of any other incorporated municipality; and

WHEREAS, the petitioners have caused an accurate plat of real property proposed for annexation to be prepared by a licensed surveyor and have filed said plat with the city recorder; and

WHEREAS, said petition appears to comply with all of the requirements of Section 10-2-403, Utah Code Annotated, 1953, as amended;

NOW, THEREFORE, BE IT RESOLVED by the City Council of Millville City, Cache County, State of Utah, that the annexation petition, attached hereto as Exhibit "A", is hereby accepted for consideration under the provisions of Utah State annexation law and is hereby referred to the municipal attorney and city recorder for review pursuant to Section 10-2-405, Utah State Code Annotated, 1953, as amended.

BE IT FURTHER RESOLVED that this resolution shall become effective upon adoption.

ADOPTED AND PASSED by the City Council this 8<sup>th</sup> day of May 2025.

BY:

---

David Hair, Mayor

ATTEST:

---

Corey Twedt, City Recorder

<b>COUNCILMEMBER</b>	<b>YES</b>	<b>NO</b>	<b>ABSENT</b>	<b>ABSTAIN</b>
Jeremy Ward				
Pamela June				
Ryan Zollinger				
Clay Wilker				
Daniel Grange				

## PETITION FOR ANNEXATION

TO THE MAYOR AND CITY COUNCIL OF MILLVILLE CITY, CACHE COUNTY,  
STATE OF UTAH:

We, the undersigned owners of certain real property lying contiguous to the present municipal limits of Millville City hereby submit this Petition for Annexation and respectfully represent the following:

1. That this petition is made pursuant to the requirements of Section 10-2-403, Utah code Annotated, 2015, as amended (UCA);
2. That the property subject to this petition is a contiguous, unincorporated area contiguous to the boundaries of Millville City;
3. That the signatures affixed hereto are those of the owners of private real property that:
  - a. is located within the area proposed for annexation;
  - b. covers a majority of the private land area within the area proposed for annexation; and
  - c. is equal in value to at least 1/3 of the value of all private real property within the area proposed for annexation;
  - d. is described as follows:

### LEGAL DESCRIPTION

*PART OF THE SOUTHEAST QUARTER OF SECTION 22, TOWNSHIP 11 NORTH, RANGE 1 EAST, SALT LAKE MERIDIAN, LOCATED IN THE COUNTY OF CACHE, STATE OF UTAH, DESCRIBED AS FOLLOWS:*

*COMMENCING AT THE SOUTH 1/16 CORNER COMMON TO SECTIONS 22 AND 23, SAID TOWNSHIP, RANGE, AND MERIDIAN;  
THENCE N89°54'17"W 2092.00 FEET MORE OR LESS ALONG THE SOUTH 1/16 LINE OF SAID SECTION 22 TO THE POINT OF BEGINNING AT THE INTERSECTION OF SAID 1/16 LINE AND THE EAST RIGHT-OF-WAY LINE OF MILLVILLE 100 EAST STREET (COUNTY 500 EAST STREET), SAID POINT ALSO BEING ON THE EXISTING MILLVILLE CITY CORPORATE LIMIT LINE;*

*THENCE S1°13'53"W 223.18 FEET ALONG SAID EAST RIGHT-OF-WAY LINE;  
THENCE N88°46'07"W 66.00 FEET TO THE INTERSECTION OF THE WEST RIGHT-OF-WAY LINE OF SAID STREET AND THE CENTERLINE OF GARR SPRINGS CREEK (ALSO KNOWN AS GARR SPRINGS BRANCH).*

*THENCE ALONG THE CENTERLINE OF SAID CREEK THE FOLLOWING FOUR COURSES:*

- 1. N58°20'44"W 87.48 FEET;*
- 2. N49°07'42"W 131.15 FEET;*
- 3. N70°11'45"W 59.16 FEET;*
- 4. N85°40'24"W 143.00 FEET TO THE EAST BANK OF THE PROVIDENCE AND MILLVILLE DITCH;*

*THENCE ALONG THE EAST BANK OF SAID DITCH THE FOLLOWING TWO COURSES:*

- 1. N30°55'38"E 35.71 FEET;*
- 2. N15°35'01"E 30.33 FEET TO THE INTERSECTION OF THE EAST BANK OF SAID DITCH AND THE SOUTH 1/16 LINE OF SAID SECTION 22 AND EXISTING MILLVILLE CITY CORPORATE LIMIT LINE;*

*THENCE S89°54'17"E 416.16 FEET TO THE POINT OF BEGINNING;*

*CONTAINING 1.29 ACRES, MORE OR LESS.*

4. That up to five of the signers of this petition have been designated as sponsors, one of whom is designated "contact sponsor", with the mailing address of each sponsor being indicated;
5. That this petition does not propose annexation of all or a part of an area proposed for annexation in a previously filed petition that has not been denied, rejected, or granted;
6. That this petition does not propose annexation of an area that includes some or all of an area proposed to be incorporated in a request for a feasibility study under Section 10-2-103 UCA or a petition under Section 10-2-125 UCA if;
  - a. the request or petition was filed before the filing of the annexation petition; and
  - b. the request, a petition under Section 10-2-109 based on that request, or a petition under Section 10-2-125 is still pending on the date the annexation petition is filed;
7. That the petitioners have caused an accurate plat of the above-described property to be made by a competent, licensed surveyor, which plat is filed herewith; and
8. That the petitioners agree to pay the City upon request and before the annexation process is completed for all expenses it has incurred due to the annexation. The petitioners understand if payment has not been made to the City by specified dates it could delay the annexation process.
9. The petitioner hereby requests to annex this property to be zoned Millville Residential R-2.

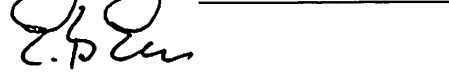
WHEREFORE, the Petitioners hereby request that this petition be considered by the governing body at its next regular meeting, or as soon thereafter as possible; that a resolution be adopted as required by law accepting this Petition for Annexation for further consideration; and that the governing body take such steps as required by law to complete the annexation herein petitioned.

DATED this 10<sup>th</sup> day of April, 2025.

Petitioner: Richard Zollinger



Phone Number \_\_\_\_\_



Sponsor, Ezra Eames

\_\_\_\_\_  
Sponsor

Address:

695 W. 1700 S. Bldg 7  
Logan, UT 84321

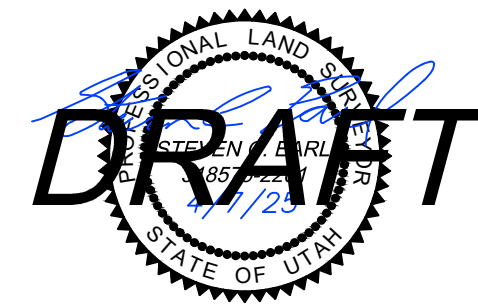
1950 E. Canyon Ridge Circle  
North Logan, UT 84341

\_\_\_\_\_  
\_\_\_\_\_  
\_\_\_\_\_

EAMES ANNEXATION  
TO MILLVILLE CITY, CACHE COUNTY, UTAH  
PART OF SECTION 22, TOWNSHIP 11 NORTH, RANGE 1 EAST  
SALT LAKE MERIDIAN

SURVEYOR'S CERTIFICATE

I, STEVEN C. EARL, HOLDING LICENSE NUMBER 318575-2201 UTAH CODE TITLE 58, CHAPTER 22, PROFESSIONAL ENGINEERS AND LAND SURVEYORS LICENSING ACT, HAVE COMPLETED A PLAT OF ANNEXATION TO THE CORPORATE LIMITS OF WELLSVILLE CITY, UTAH IN ACCORDANCE WITH UTAH CODE TITLE 17, CHAPTER 23, SECTION 20, SUBSECTION (4), AND HAVE ACCURATELY REPRESENTED THE TRACT OF LAND SHOWN AND DESCRIBED HEREON BASED UPON DATA COMPILED FROM THE RECORDS OF THE CACHE COUNTY RECORDER'S AND SURVEYOR'S OFFICES.



LEGAL DESCRIPTION

PART OF THE SOUTHEAST QUARTER OF SECTION 22, TOWNSHIP 11 NORTH, RANGE 1 EAST, SALT LAKE MERIDIAN, LOCATED IN THE COUNTY OF CACHE, STATE OF UTAH, DESCRIBED AS FOLLOWS:

COMMENCING AT THE SOUTH 1/16 CORNER COMMON TO SECTIONS 22 AND 23, SAID TOWNSHIP, RANGE, AND MERIDIAN;  
THENCE N89°54'17"W 2092.00 FEET MORE OR LESS ALONG THE SOUTH 1/16 LINE OF SAID SECTION 22 TO THE POINT OF BEGINNING AT THE INTERSECTION OF SAID 1/16 LINE AND THE EAST RIGHT-OF-WAY LINE OF MILLVILLE 100 EAST STREET (COUNTY 500 EAST STREET), SAID POINT ALSO BEING ON THE EXISTING MILLVILLE CITY CORPORATE LIMIT LINE;  
THENCE S1°13'53"W 223.18 FEET ALONG SAID EAST RIGHT-OF-WAY LINE;  
THENCE N88°46'07"W 66.00 FEET TO THE INTERSECTION OF THE WEST RIGHT-OF-WAY LINE OF SAID STREET AND THE CENTERLINE OF GARR SPRINGS CREEK (ALSO KNOWN AS GARR SPRINGS BRANCH).  
THENCE ALONG THE CENTERLINE OF SAID CREEK THE FOLLOWING FOUR COURSES:  
1. N58°20'44"W 87.48 FEET;  
2. N49°07'42"W 131.15 FEET;  
3. N70°11'45"W 59.16 FEET;  
4. N85°40'24"W 143.00 FEET TO THE EAST BANK OF THE PROVIDENCE AND MILLVILLE DITCH;  
THENCE ALONG THE EAST BANK OF SAID DITCH THE FOLLOWING TWO COURSES:  
1. N30°55'38"E 35.71 FEET;  
2. N15°35'01"E 30.33 FEET TO THE INTERSECTION OF THE EAST BANK OF SAID DITCH AND THE SOUTH 1/16 LINE OF SAID SECTION 22 AND EXISTING MILLVILLE CITY CORPORATE LIMIT LINE;  
THENCE S89°54'17"E 416.16 FEET TO THE POINT OF BEGINNING;  
CONTAINING 1.29 ACRES, MORE OR LESS.

MILLVILLE CITY APPROVAL AND ACCEPTANCE

THIS IS TO CERTIFY THAT WE, THE MILLVILLE CITY COUNCIL, HAVE RECEIVED A PETITION SIGNED BY A MAJORITY OF THE OWNERS OF THE TRACT SHOWN HEREON REQUESTING THAT SAID TRACT BE ANNEXED TO MILLVILLE CITY, AND THAT A COPY OF THE ORDINANCE HAS BEEN PREPARED FOR FILING HERewith AND THAT WE HAVE EXAMINED AND DO HEREBY APPROVE AND ACCEPT THE ANNEXATION OF THE TRACT AS SHOWN AS A PART OF SAID CITY.

WITNESS MY HAND AND OFFICIAL SEAL THIS \_\_\_\_ DAY OF \_\_\_\_\_, 2025.

MILLVILLE CITY MAYOR

ATTEST

MILLVILLE CITY RECORDER

DEPUTY CACHE COUNTY SURVEYOR APPROVAL

THIS PLAT IS HEREBY APPROVED AS A FINAL LOCAL ENTITY PLAT IN ACCORDANCE WITH UTAH CODE TITLE 17, CHAPTER 23, SECTION 20.

SEALED AND SIGNED THIS \_\_\_\_ DAY OF \_\_\_\_\_, 2025 DEPUTY COUNTY SURVEYOR

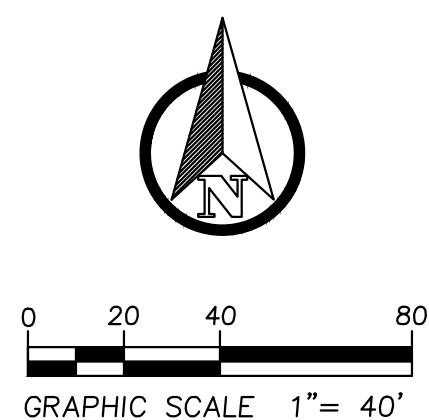
COUNTY RECORDER

COUNTY RECORDER'S NO. \_\_\_\_\_  
STATE OF UTAH, COUNTY OF CACHE,  
RECORDED AND FILED AT THE REQUEST  
OF \_\_\_\_\_  
THIS \_\_\_\_ DAY OF \_\_\_\_\_  
20\_\_ AT \_\_\_\_\_ IN BOOK OF PLATS  
INDEX \_\_\_\_\_  
FEE \_\_\_\_\_  
COUNTY RECORDER

LEGEND

- AREA HEREBY ANNEXED TO MILLVILLE CITY
- EXISTING CORPORATE LIMIT LINE
- ANNEXATION BOUNDARY
- PARCEL LINE
- RIGHT-OF-WAY LINE
- SECTION LINE
- 1/16 SECTION LINE
- 1/4 SECTION LINE

- SECTION CORNERS
- 1/16 SECTION CORNER
- SET REBAR W/ STEVEN C EARL CAP
- SCE
- BARE REBAR



Cache • Landmark  
Engineers  
Surveyors  
Planners

95 Golf Course Rd.  
Suite 101  
Logan, UT 84321  
435.713.0099

DATE: 7 APRIL 2025

SCALE: 1" = 40'

DRAFTED BY: L HEGEMANN

CHECKED BY: S.EARL

APPROVED BY: S.EARL

PROJECT NUMBER: 845-2501



**MILLVILLE CITY  
ORDINANCE 2018-9**

**AN ORDINANCE SETTING RESTRICTIONS FOR RESIDENTIAL  
ZONING**

WHEREAS, Millville Planning and Zoning Commission recognized the need to add restrictions on rezones from Agricultural Zones to Residential Zones; and

WHEREAS, the Millville Planning Commission reviewed the ordinance and held a public hearing to receive input on June 21, 2018; and

WHEREAS, the Millville City Council reviewed the ordinance at the City Council meeting held June 28, 2018 and July 12, 2018;

NOW, THEREFORE, BE IT ORDAINED, by the Millville City Council, Cache County, State of Utah, as follows:

**Add to Millville City Code Section 17.12.20: Determination of Zoning District Boundaries:**

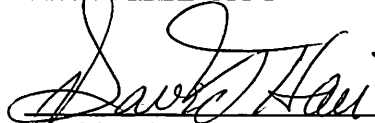
**ADOPT:**

**J. Any property south of 400 South currently zoned as Agriculture (A), or any property south of 400 South annexed into city limits as Agriculture (A), that wants to be considered for a residential zone will only be considered as a Residential (R-3) Zone.**

This ordinance shall become effective immediately upon publication or posting as set forth by State Law.

ADOPTED AND PASSED, by the MILLVILLE CITY COUNCIL this 12th day of July, 2018.

MILLVILLE CITY

  
\_\_\_\_\_  
David Hair, Mayor

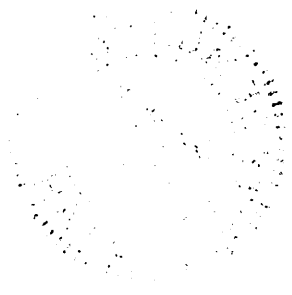
ATTEST:

  
\_\_\_\_\_  
Corey Twedt, City Recorder



COUNCILMEMBER	YES	NO	ABSENT	ABSTAIN
Michael Callahan		X		
Cindy Cummings	X			
Mark Williams	X			
Clay G. Wilker	X			
Daniel Grange		X		

POSTED: 7/12/18





## **AGENDA REPORT: COUNTY INDOOR RECREATION SURVEY    May 8, 2025**

---

### **Background**

In 2024, there was a heightened focus from some cities in Cache Valley for a desire to provide indoor recreation facilities for their residents. During the 2024 RAPZ Grant funding cycle, the County awarded an initial grant of \$75,000 for a County-wide feasibility study with indications that more RAPZ funding would be available for the study if or when it is needed. The County has hired a consultant and is now ready to move forward with the survey that will cover the entire County.

I have included the email that came from the County Planner. He has been told that if approval is given, Millville will put notice in our newsletter, on the posting boards, on the City website, and through our email/text notification system.

As soon as we have a link to the survey, it will be provided to the City Council by email.

### **Included Documents**

- Email from Brandon Bell, the County Planner



Corey Twedt <corey@millvilleut.gov>

---

## Cache County Recreation Center Feasibility Study - Request to Share Survey Link, Text & Materials

---

**Brandon Bell** <brandon.bell@cachecounty.gov>

Wed, Apr 23, 2025 at 5:19 PM

To: wood.dp1@hotmail.com, clarkstonmayor@clarkstonutah.org, clarkstontown@clarkstonutah.org, bryan.c@hydeparkcity.org, Marcus Alton <marcus.a@hydeparkcity.org>, jeff@halldairy.com, ewniels@gmail.com, holly.daines@loganutah.org, mike.desimone@loganutah.org, mikebenson13@gmail.com, newtontown@comcast.net, "Lyndsay@northlogancity.gov" <Lyndsay@northlogancity.gov>, Scott Perkes <sperkes@northlogancity.gov>, cornishmayor@gmail.com, cornishtownhall@gmail.com, leebblack71@live.com, perickson@cachevalleybank.com, kmonson@smithfieldcity.org, trentontown@hotmail.com, paynelg44@gmail.com, Marcus Allton <marcus.a@hpcutah.gov>, jbergeson@lewiston-ut.org, cbarr@lewiston-ut.org, Holly Daines <holly.daines@loganutah.gov>, Mike Desimone <mike.desimone@loganutah.gov>, david@millvilleut.gov, Corey Twedt <corey@millvilleut.gov>, Kris Monson <kmonson@smithfieldutah.gov>

Cache County Local Leaders & Staff,

Cache County is kicking off an Indoor Recreation Feasibility Study by reaching out to residents to understand their interest in indoor, year-round recreation within Cache County. We are preparing to share a survey to provide residents with an opportunity to give feedback on where the gaps in indoor recreation might exist within the county and their priorities for indoor recreation. This online survey will be available through a web link and a QR code. We would love your city to share this survey with your residents to ensure we get effective feedback from all of our communities. (A few communities are not being asked to participate in this survey, simply because they have recently participated in a very similar survey, which will be merged with the results of this survey). We are excited to gather the information from this survey, from County residents, about their recreation needs, interests, and preferences. **In order to receive a successful, high response rate for this survey, however, we need your help!**

**We are asking the cities within Cache County to share the survey introduction and a link through whichever means works best for them. At the same time, VCBO's experience has shown certain methods, that provide the best response rates, and we would like to invite you to share a link to the survey and the text in blue below, introducing the survey, by the following methods, at minimum, if possible:**

- 1) Share the link to the survey and the text in blue below, introducing the survey, on the homepage of your city website (on the homepage, to make it as visible as possible!)**
- 2) Share the link, and the text in blue below, on all of your social media accounts. These social media accounts are often robust for many cities, so please share them there!**
- 3) Sharing a link, the text in blue below, and/or the QR Code in utility billing emails/mailers.**
- 4) If your community has a mass-texting service that you send to residents, we invite and request that you share the link and the text in blue below, through text message as well. You can put the**

You are also welcome to share the survey by other means. Please let us know if you find another method that works well! Please keep in mind, that the needs and interests of those in your community will be best reflected in the final survey results for the County, the more widely and effectively you share this survey with your residents, so we hope you will share this by every reasonable means, including those listed above.

We anticipate having the survey summary and link ready to go by early May (once the Steering Committee has approved the survey and agreed upon a survey timeline). We are providing this email now, so that all cities and towns asked to share this survey, can prepare, and be ready to share the survey, by as many of the above methods, as possible. If you are not the person who can coordinate or execute sharing the survey by the above methods, or other methods, will you please forward them this email, as soon as possible, and request that they respond to this email with their email address, so I can communicate with them. moving forward. I have included elected leaders and staff in this email so that there is as much likelihood that this will reach the best person at your city or town.

At the time the survey is ready, we will have a PDF that we will provide that can be printed as a mailer to include in any utility billing mail you send out in your city or town. The survey is anticipated to be open for responses for approximately 6-8 weeks. We are trying to get each city or town to put this on their website during the same 6-8 week period. We are sending this email now, in order to enable to you to have a bit of time to prepare to distribute the survey by the above methods, so we can have a high number of responses to inform this survey. The more participation we get, the higher the amount of survey responses we will receive, and the better information we will have to guide this important decision. For this survey, we have crafted the following text to share with your community:

### ***Indoor Recreation Survey***

*Cache County is exploring the need for indoor, year-round recreation. The following survey has been created to determine if there is interest in supporting one or more indoor recreation facilities within the County. This survey will also provide an opportunity for you to share what programs and amenities, if any, might be a valuable addition to the community and help us more fully understand your level of interest and support.*

### ***Where to take it:***

*This survey has been created as a web-based survey, is easiest if taken on a computer, and may take up to 10 minutes to complete. However, it can be completed by phone (insert phone number here), and hard copies of the survey are available at City Hall.*

*(a web link and QR code will be provided in a future email)*

Please note that this is mainly similar to the recent South Cache Valley survey. If you have already shared that survey with your community, you do not need to share this survey as we have had a strong response from South Valley residents.

**We will send you the link and information, within 1 to 2.5 weeks, in the meantime, we ask that you prepare to share the survey by the above methods, and any other means, you feel best.**

Warmth,

**Brandon Bell, CNU-A**

**Countywide Planner**

Development Services  
179 North Main, Suite 305  
Logan, UT 84321  
Main (435) 755-1640  
Direct (435) 755-1659

[brandon.bell@cachecounty.gov](mailto:brandon.bell@cachecounty.gov)





## **AGENDA REPORT: BUDGET REVIEW**

**May 8, 2025**

---

### **Background**

At the end of each fiscal year, the Council reviews the yearly budget and adopts a new final budget – with adjustments – for the current year. Additionally, the Council must adopt the new fiscal year budget in June of each year. If a tax rate increase is planned, a preliminary budget is adopted in June and the final budget is adopted in August.

At this meeting, the Council will review the budgets and discuss if they want to adjust the Millville property tax rate for 2025 or stick with the certified rate which is intended to result in the same revenue as the previous year. The FY26 budget shown in this packet does not include a property tax rate increase although it is something you should consider and discuss.

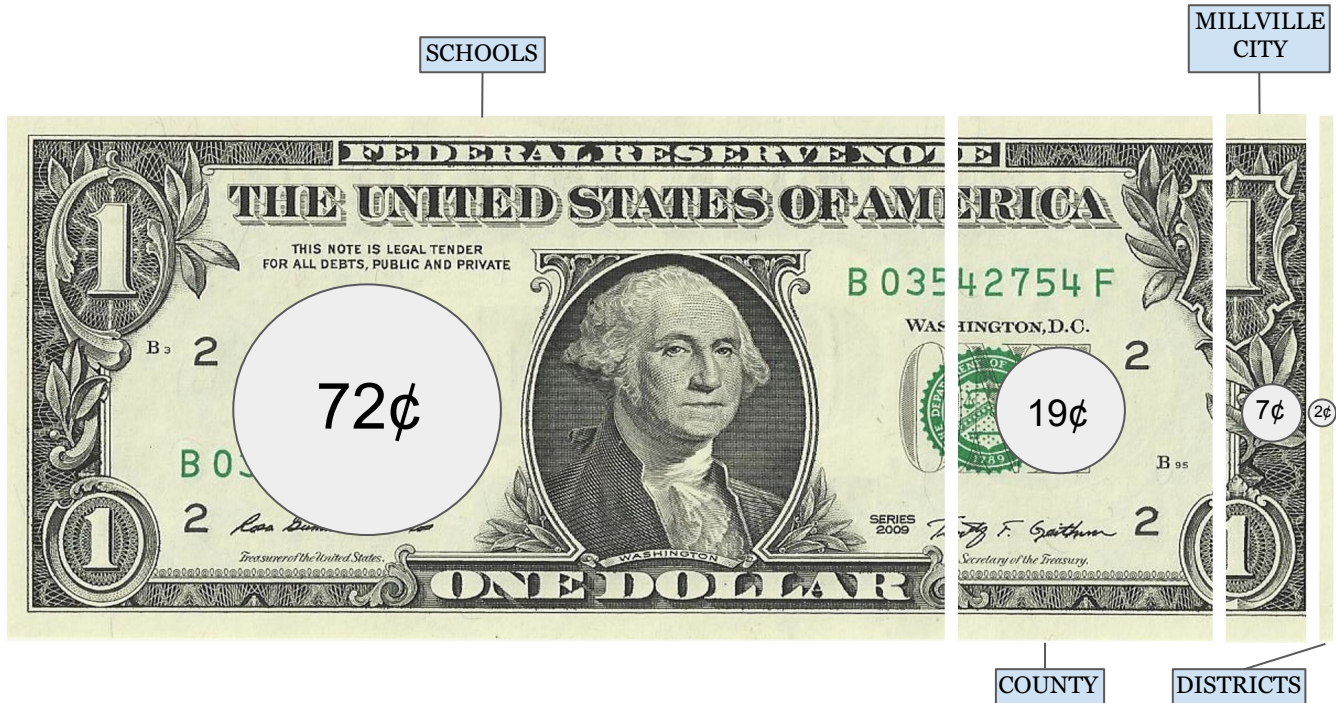
### **Budget adoption schedule:**

- 5/8/25: Budgets reviewed in City Council Meeting. Property tax rates discussed. Adopt preliminary FY26 Budget.
- 6/12/25: Hold budget public hearing at 7:30 p.m. Make budget adjustments as desired. Adopt final revised FY25 Budget. Adopt FY26 Budget OR decide to increase tax rate and adopt updated preliminary FY26 Budget.
- 8/14/25: (If Tax Rate increase is planned) Public Hearing (7:30 p.m.). Adopt final FY26 Budget.



# PROPERTY TAX

This is an illustration of how your 2024 property tax dollar was distributed. Approximately 7% went to Millville City.



## 2024 ENTITY PROPERTY TAX RATE COMPARISON

ENTITY NAME	TAX RATE	MULTIPLE OF MILLVILLE RATE	ENTITY RECEIVED \$600K HOME	ENTITY RECEIVED \$800K HOME
AMALGA TOWN	0.000413	0.79	\$248	\$330
TRENTON TOWN	0.000461	0.89	\$277	\$369
RIVER HEIGHTS CITY	0.000489	0.94	\$293	\$391
PARADISE TOWN	0.000501	0.96	\$301	\$401
<b>MILLVILLE CITY</b>	<b>0.000520</b>	<b>1.00</b>	<b>\$312</b>	<b>\$416</b>
NEWTON TOWN	0.000755	1.45	\$453	\$604
WELLSVILLE CITY	0.000810	1.56	\$486	\$648
HYRUM CITY	0.000847	1.63	\$508	\$678
LOGAN CITY	0.000965	1.86	\$579	\$772
PROVIDENCE CITY	0.001055	2.03	\$633	\$844
NORTH LOGAN CITY	0.001066	2.05	\$640	\$853
HYDE PARK CITY	0.001101	2.12	\$661	\$881
RICHMOND CITY	0.001110	2.13	\$666	\$888
CLARKSTON TOWN	0.001330	2.56	\$798	\$1,064
SMITHFIELD CITY	0.001352	2.60	\$811	\$1,082
NIBLEY CITY	0.001378	2.65	\$827	\$1,102
MENDON CITY	0.001453	2.79	\$872	\$1,162
CORNISH TOWN	0.001567	3.01	\$940	\$1,254
LEWISTON CITY	0.001765	3.39	\$1,059	\$1,412

\*yellow highlighted cells are cities that raised property tax rates in 2024



MILLVILLE CITY BUDGET - REVENUE		ACTUAL	ACTUAL	ORIGINAL	FINAL	ORIGINAL
Account Description		FY23 Actual	FY24 Actual	FY25 Budget	FY25 Budget	FY26 Budget
GENERAL	Property Tax	\$159,204	\$161,128	\$163,300	\$165,800	\$166,000
	Sales Tax	\$429,631	\$431,318	\$400,000	\$439,000	\$400,000
	Motor Tax	\$881	\$1,004	\$900	\$900	\$900
	In Lieu Fees - UTV Recreation Fees	\$9,750	\$10,977	\$10,000	\$8,400	\$8,400
	Comcast Franchise	\$10,256	\$9,612	\$9,400	\$8,800	\$8,700
	Energy Sales and Use Tax	\$195,996	\$199,353	\$190,000	\$191,000	\$190,000
	Animal Licenses	\$4,851	\$4,546	\$4,400	\$4,200	\$4,200
	Ambulance / EMS	\$45,952	\$45,904	\$45,600	\$45,600	\$45,600
	Fines / Court	\$1,986	\$437	\$400	\$1,000	\$400
	Business Licenses	\$2,638	\$3,254	\$2,700	\$3,900	\$3,500
	Sanitation	\$228,435	\$205,702	\$214,000	\$205,000	\$205,000
	9-1-1 Service	\$26,121	\$26,306	\$27,000	\$27,000	\$29,500
	Class "C" Roads	\$138,420	\$245,213	\$140,000	\$204,000	\$200,000
	Appro. Fund Bal. Class "C" Rd	\$0	\$0	\$0	\$0	\$0
	Appropriated Fund Balance	\$0	\$0	\$0	\$0	\$0
	<a href="#">Park Impact Fee</a>	\$45,900	\$21,320	\$21,300	\$21,300	\$26,600
	Park Impact Appropriated FB	\$0	\$0	\$2,700	\$2,700	\$0
	<a href="#">Road Impact Fee</a>	\$17,600	\$7,040	\$7,000	\$7,000	\$8,800
	Road Impact Appropriated FB	\$0	\$0	\$0	\$10,800	\$41,200
	Restaurant/RAPZ Tax Awarded	\$96,887	\$7,061	\$227,200	\$220,200	\$0
	Youth Council	\$560	\$1,655	\$800	\$0	\$800
	Park Rentals	\$13,406	\$14,399	\$10,000	\$10,000	\$10,000
	Building Permits	\$11,789	\$10,737	\$6,500	\$3,000	\$5,000
	Development Review Fees	\$5,560	\$3,702	\$2,500	\$3,200	\$3,000
	Reimbursed Fees; Eng. & Dev.	\$9,702	\$9,114	\$5,000	\$13,900	\$5,000
	Interest	\$47,411	\$83,168	\$40,000	\$86,000	\$50,000
	COG Grant (reimbursment)	\$92,000	\$114,710	\$183,100	\$127,600	\$174,800
	Misc. Revenue	\$13,651	\$10,176	\$500	\$8,900	\$500
	Mass Transit Sales Tax/CVTD	\$34,961	\$36,021	\$41,000	\$41,000	\$44,000
	<b>TOTAL GENERAL</b>			<b>\$1,755,300</b>	<b>\$1,860,200</b>	<b>\$1,631,900</b>

STORM WATER	Charges for Stormwater	\$33,877	\$33,872	\$34,100	\$34,000	\$34,000
	Stormwater Construction Fees	\$2,475	\$2,913	\$2,900	\$1,000	\$1,500
	Interest	\$2,551	\$5,066	\$2,000	\$5,500	\$3,000
	Transfer from General Fund	\$0	\$0	\$0	\$0	\$0
	Appropriated Fund Balance	\$0	\$0	\$0	\$0	\$0
	<b>TOTAL STORMWATER</b>			<b>\$39,000</b>	<b>\$40,500</b>	<b>\$38,500</b>

CPT PROJ.	Interest	\$39,673	\$74,911	\$35,000	\$84,400	\$60,000
	Appropriated Fund Balance	\$0	\$0	\$0	\$0	\$0
	Transfer from General Fund	\$305,000	\$350,000	\$153,800	\$262,300	\$70,600
	<b>TOTAL CAPITAL PROJECT</b>			<b>\$188,800</b>	<b>\$346,700</b>	<b>\$130,600</b>

MILLVILLE CITY BUDGET - REVENUE		ACTUAL	ACTUAL	ORIGINAL	FINAL	ORIGINAL
Account Description		FY23 Actual	FY24 Actual	FY25 Budget	FY25 Budget	FY26 Budget
WATER & SEWER	Charges for Water Service ...	\$497,456	\$484,441	\$478,000	\$550,000	\$550,000
	Miscellaneous Income	\$7,153	\$9,459	\$14,500	\$19,900	\$2,500
	Interest Income (Water)	\$43,360	\$71,840	\$35,000	\$63,000	\$40,000
	Interest Income (Sewer)	\$408,379	\$256,334	\$0	\$120,000	\$20,000
	Water Impact Fee	\$30,500	\$12,200	\$12,200	\$12,200	\$15,200
	Water Connection Fees	\$1,900	\$1,550	\$1,000	\$300	\$500
	Charges for Sewer Service	\$22,734	\$442,520	\$420,000	\$550,000	\$694,000
	Sewer Impact Fee	\$26,280	\$35,040	\$35,000	\$35,000	\$43,800
	Grant Proceeds (Sewer)	\$0	\$4,604,000	\$10,641,000	\$10,500,000	\$1,813,600
	Transfer from General Fund	\$127,200	\$0	\$0	\$0	\$0
	Transfer from Capital Project Fund	\$0	\$0	\$0	\$0	\$0
	Appropriated Fund Balance	\$0	\$0	\$729,100	\$0	\$0
TOTAL WATER AND SEWER				\$12,365,800	\$11,850,400	\$3,179,600
TOTAL				\$14,348,900	\$14,097,800	\$4,980,600

MILLVILLE CITY BUDGET - EXPENSES		ACTUAL	ACTUAL	ORIGINAL	FINAL	ORIGINAL
Account Description		FY23 Actual	FY24 Actual	FY25 Budget	FY25 Budget	FY26 Budget
GENERAL	General Government	\$39,576	\$28,797	\$44,500	\$44,500	\$44,500
	Auditor (General) ...	\$14,736	\$13,956	\$16,000	\$17,500	\$17,000
	Financial Consulting & IT (General) ...	\$8,835	\$12,130	\$14,000	\$14,000	\$14,500
	Insurance (General)	\$19,257	\$17,759	\$21,000	\$21,000	\$22,000
	Elected Officials (General)	\$20,790	\$21,500	\$21,500	\$21,500	\$21,500
	General Non-Category Payroll	\$78,105	\$91,662	\$113,200	\$113,200	\$122,300
	P&Z ...	\$7,497	\$9,354	\$9,900	\$9,900	\$9,900
	Legal (General) ...	\$8,643	\$3,715	\$14,000	\$10,000	\$14,000
	Engineering (General) ...	\$23,906	\$10,378	\$30,000	\$26,000	\$30,000
	Building (General) ...	\$11,894	\$10,353	\$14,300	\$14,300	\$14,300
	Law Enforcement	\$26,175	\$28,792	\$33,100	\$33,100	\$35,400
	Animal Control ...	\$3,776	\$3,776	\$4,100	\$4,100	\$4,500
	Fire	\$26,749	\$28,992	\$32,000	\$31,000	\$33,800
	First Responders and EMS	\$43,137	\$44,207	\$46,000	\$47,100	\$48,000
	Elections ...	\$0	\$0	\$500	\$300	\$6,700
	Roads - General ...	\$123,715	\$128,926	\$137,500	\$137,500	\$142,600
	Roads Class "C" Regular ...	\$8,781	\$7,756	\$46,000	\$46,000	\$46,000
	Roads Class "C" Capital Outlay	\$0	\$0	\$0	\$0	\$10,000
	Class "C" Designated Future Use	\$0	\$0	\$94,000	\$158,000	\$190,000
	COG Road Project (Reimbursable)	\$91,507	\$113,639	\$183,100	\$127,600	\$174,800
	Road Impact Fee Capital Outlay	\$66,350	\$10,197	\$7,000	\$17,800	\$50,000
	Road Impact Fee Designated Future	\$0	\$0	\$0	\$0	\$0
	Parks (General) ...	\$124,202	\$149,223	\$161,000	\$161,000	\$174,000
	Parks/Recreation - Other ...	\$3,584	\$12,082	\$11,500	\$11,500	\$11,500
	Park Capital Improv. RAPZ (Reimbursable)	\$107,970	\$0	\$228,900	\$228,900	\$7,000
	Park Impact Fees ...	\$68,260	\$0	\$24,000	\$24,000	\$0
	Park Impact Fees - Designated Future	\$0	\$0	\$0	\$0	\$26,600
	Sanitation	\$210,499	\$200,805	\$210,000	\$194,000	\$202,000
	9-1-1 Service	\$25,701	\$26,770	\$27,000	\$27,100	\$29,900
	Disaster Relief	\$3,881	\$0	\$4,000	\$4,000	\$4,000
	Public Safety/Emergency Preparedness ...	\$4,470	\$3,799	\$6,000	\$6,000	\$6,000
	Youth Council ...	\$3,721	\$3,635	\$6,400	\$6,000	\$4,500
	Designated for Future Use	\$0	\$0	\$0	\$0	\$0
	Mass Transit Tax Distribution/CVTD	\$34,961	\$36,021	\$41,000	\$41,000	\$44,000
	Transfer to Capital Project Fund	\$305,000	\$350,000	\$153,800	\$262,300	\$70,600
	Transfer to Water-Sewer Fund	\$127,200	\$0	\$0	\$0	\$0
	<b>TOTAL GENERAL</b>			<b>\$1,755,300</b>	<b>\$1,860,200</b>	<b>\$1,631,900</b>

STORM WATER	Salaries/Benefits	\$19,587	\$20,572	\$22,100	\$22,100	\$23,500
	Special Dept. Supplies (SW) ...	\$5,906	\$6,904	\$9,000	\$9,000	\$9,000
	Capital Outlay	\$14,495	\$0	\$7,900	\$0	\$5,000
	Appropriated for Future Use	\$0	\$0	\$0	\$9,400	\$1,000
	<b>TOTAL STORMWATER</b>			<b>\$39,000</b>	<b>\$40,500</b>	<b>\$38,500</b>

MILLVILLE CITY BUDGET - EXPENSES		ACTUAL	ACTUAL	ORIGINAL	FINAL	ORIGINAL
Account Description		FY23 Actual	FY24 Actual	FY25 Budget	FY25 Budget	FY26 Budget
CPT PROJECT	Capital Outlay - Gen Government	\$4,969	\$12,237	\$115,000	\$115,000	\$115,000
	Capital Projects	\$0	\$0	\$0	\$0	\$0
	Transfer to Water-Sewer Fund	\$0	\$0	\$0	\$0	\$0
	Designated Future Use	\$0	\$0	\$73,800	\$231,700	\$15,600
	<b>TOTAL CAPITAL PROJECT</b>			<b>\$188,800</b>	<b>\$346,700</b>	<b>\$130,600</b>
WATER & SEWER	General (Water) ...	\$59,739	\$59,464	\$65,000	\$65,000	\$65,000
	Salary/Benefit (Water) ...	\$146,205	\$156,759	\$166,400	\$166,000	\$176,300
	Legal (Water) ...	\$4,933	\$2,606	\$10,000	\$4,000	\$10,000
	Engineering (Water)	\$1,930	\$2,313	\$11,000	\$11,000	\$15,000
	Auditor (Water) ...	\$12,014	\$12,000	\$12,000	\$12,000	\$15,000
	Financial Consulting & IT (Water) ...	\$6,389	\$2,706	\$8,500	\$8,500	\$9,000
	Insurance (Water)	\$5,983	\$8,295	\$9,000	\$8,000	\$9,000
	Special Department Supplies - Water ...	\$43,934	\$58,259	\$55,000	\$55,000	\$50,000
	Special Department Supplies - Sewer	\$1,168	\$209	\$1,800	\$1,800	\$15,000
	City Sewer - Nibley/Hyrum	\$10,058	\$9,930	\$12,000	\$12,000	\$200,000
	Capital Outlay (Water)	\$0	\$0	\$0	\$21,600	\$0
	Sewer Capital Projects	\$8,036,115	\$11,645,476	\$11,495,000	\$10,000,000	\$1,500,000
	Water Bond (2006) - Water Storage Tank	\$91,130	\$91,502	\$92,000	\$92,000	\$93,000
	Bond (2000) - Parker Well	\$44,760	\$44,760	\$44,800	\$44,800	\$44,800
	USDA Sewer Rev Bond	\$496,130	\$24,053,336	\$338,300	\$338,300	\$338,300
	Cap. Facility Rplcmnt Fund Reserve	\$0	\$0	\$45,000	\$45,000	\$45,000
	Designated for Future Use - Sewer	\$0	\$0	\$0	\$965,400	\$594,200
	<b>TOTAL WATER AND SEWER</b>			<b>\$12,365,800</b>	<b>\$11,850,400</b>	<b>\$3,179,600</b>
<b>TOTAL</b>				<b>\$14,348,900</b>	<b>\$14,097,800</b>	<b>\$4,980,600</b>

# **Councilmember Assignments 2025**

## **Councilmember Daniel Grange**

- Car Show for City Celebration
- Parks

## **Councilmember Ryan Zollinger**

- Sewer
- School District

## **Councilmember Clay Wilker**

- Ordinance Enforcement
- Fire/EMS/Emergency Preparedness
- Law Enforcement/Animal Control

## **Councilmember Pamela June**

- P&Z
- Youth Council
- Wildfire

## **Councilmember Jeremy Ward**

- City Celebration/Parade
- Trails