

SCALE

075'150'

1" = 150'

PARCEL AREA (ACRES)	20
BUILDING AREA (SQ. FT.)	14,040
PARKING AREA (SQ. FT.)	10,175
NUMBER OF STALLS REQ'D	12
NUMBER OF STALLS PROVIDED	14

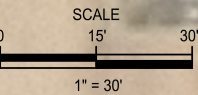
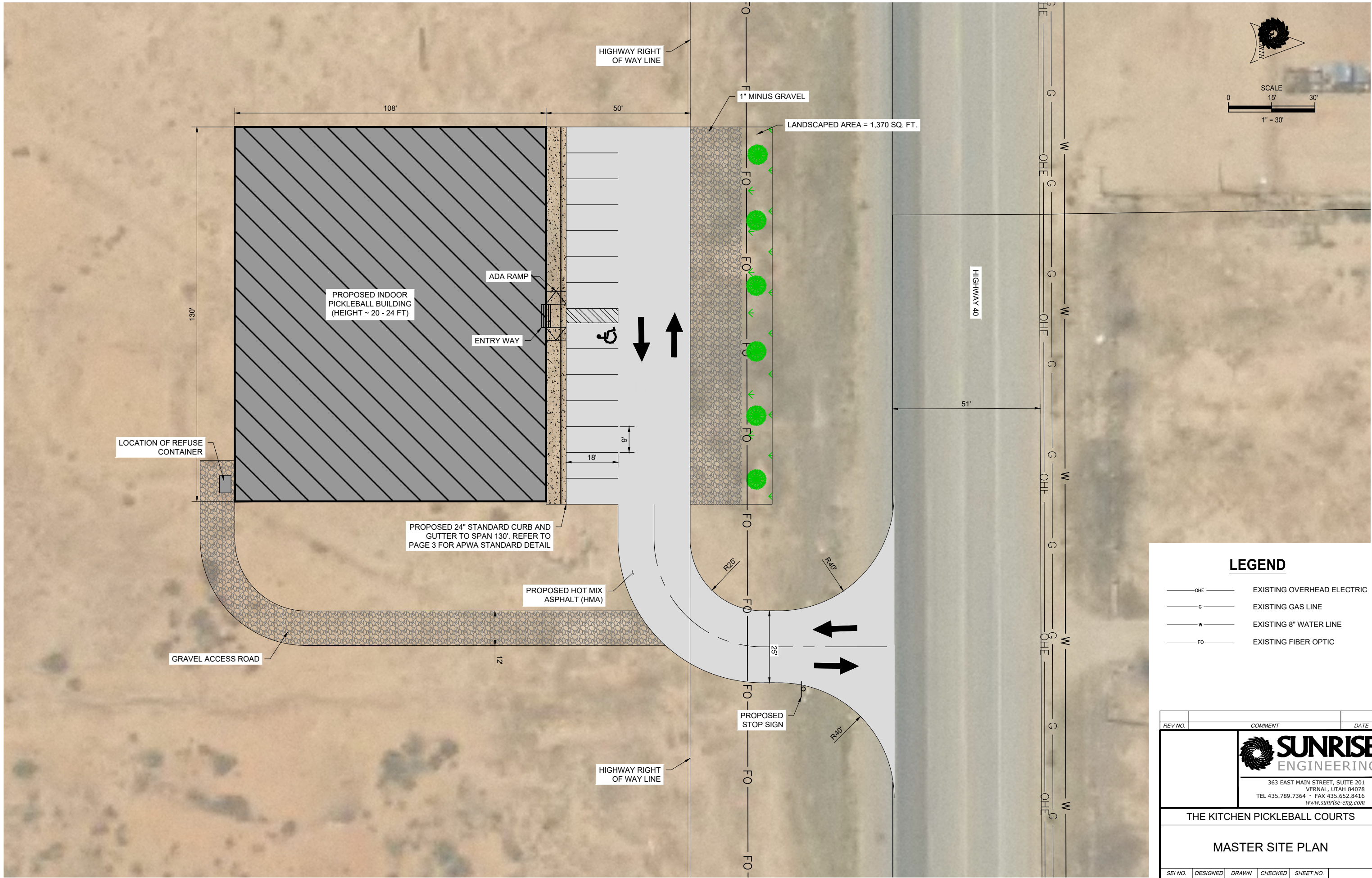
LANDSCAPED AREA (SQ. FT.)	1,370
NUMBER OF TREES REQ'D	6
NUMBER OF TREES PROVIDED	6
PERCENT PARKING LOT LANDSCAPED REQ'D	5
PERCENT PARKING LOT LANDSCAPED PROVIDED	13

LEGEND

	EXISTING OVERHEAD ELECTRIC
	EXISTING FIBER OPTIC
	EXISTING GAS LINE
	EXISTING 8" WATER LINE
	EXISTING FENCE
	EXISTING IRRIGATION LINE
	EXISTING UTILITY POLE


REV NO.	COMMENT	DATE		
<div><div></div><div><div>SUNRISE</div><div>ENGINEERING</div><div>363 EAST MAIN STREET, SUITE 201 VERNAL, UTAH 84078 TEL 435.789.7364 • FAX 435.652.8416 www.sunrise-eng.com</div></div></div>				
THE KITCHEN PICKLEBALL COURTS				
PROJECT AREA				
SEI NO.	DESIGNED	DRAWN	CHECKED	SHEET NO.
12565	JMI	JMI	AA	1 of 7



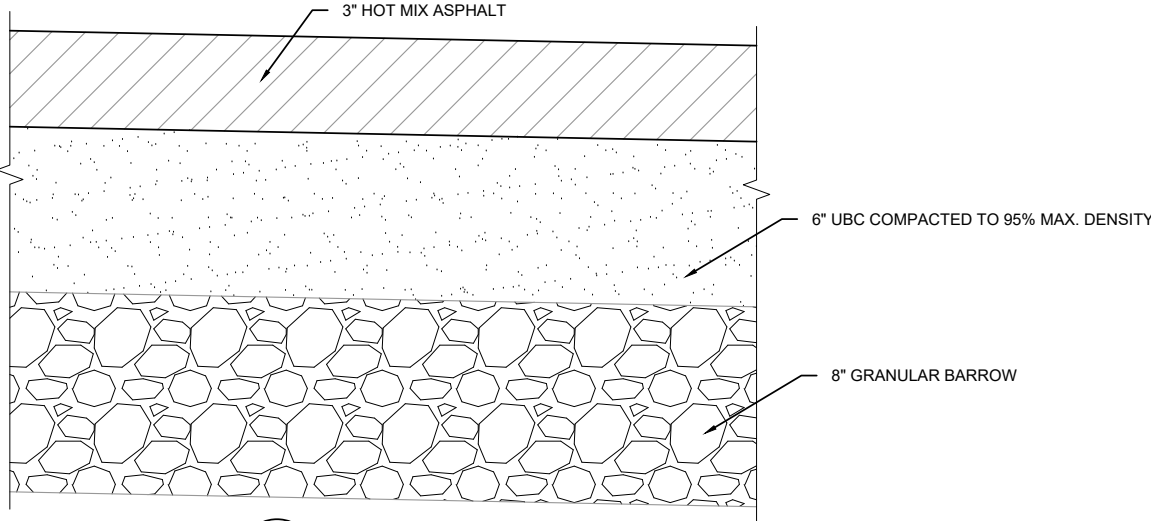


**LEGEND**

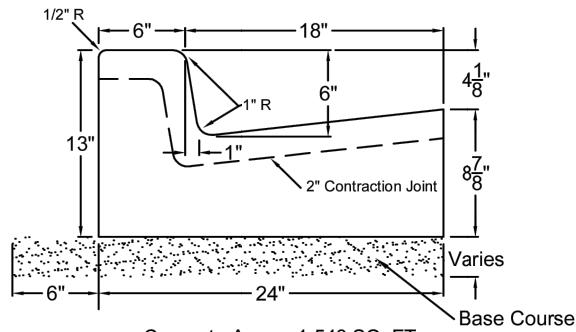
- OHE— EXISTING OVERHEAD ELECTRIC
- G— EXISTING GAS LINE
- W— EXISTING 8" WATER LINE
- FO— EXISTING FIBER OPTIC

REV NO.	COMMENT				DATE
<div><b>SUNRISE</b> ENGINEERING</div> <div>363 EAST MAIN STREET, SUITE 201 VERNAL, UTAH 84078 TEL 435.789.7364 • FAX 435.652.8416 www.sunrise-eng.com</div>					
THE KITCHEN PICKLEBALL COURTS					
MASTER SITE PLAN					
SEI NO. XXXX	DESIGNED JMI	DRAWN JMI	CHECKED AA	SHEET NO. 2 of 7	





**A**  
TYP  
DETAIL - ASPHALT  
NOT TO SCALE

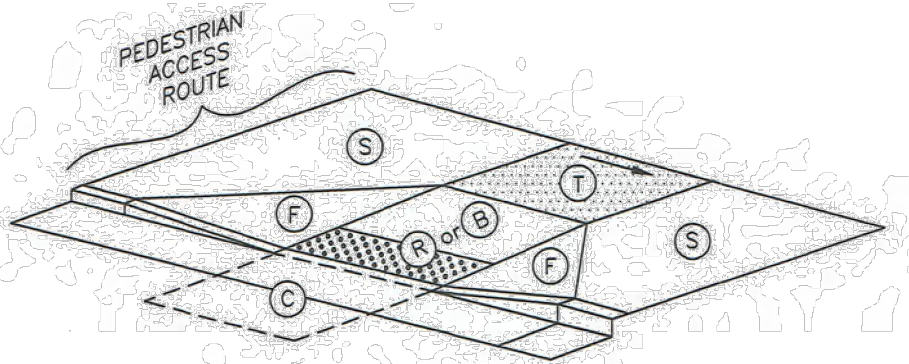


Concrete Area = 1.548 SQ. FT.  
Cubic Yard per Foot = 0.057

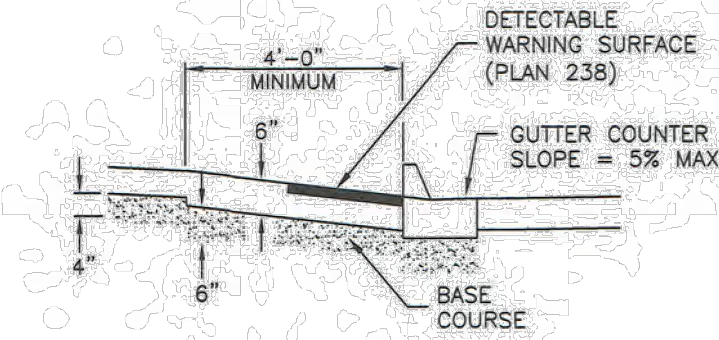
**Type A - 24" Standard**

**B**  
TYP  
APWA 2025 - PLAN 205.1  
NOT TO SCALE

THE LOCATION OF THE PEDESTRIAN ACCESS ROUTE AFFECTS FLARE SLOPE CONSTRUCTION



**EXAMPLE 1**




**MATERIALS**

		RUNNING SLOPE (%) MAXIMUM	CROSS SLOPE (%) MAXIMUM
TURNING SPACE	(T)	STREET GRADE	2
CURB RAMP	(R)	8.33	2 (c)
BLENDED TRANSITION	(B)	5	2 (c)
CLEAR SPACE	(C)	5	2 (c)
SIDEWALK	(S)	STREET GRADE	2
FLARE	(F)	10	--

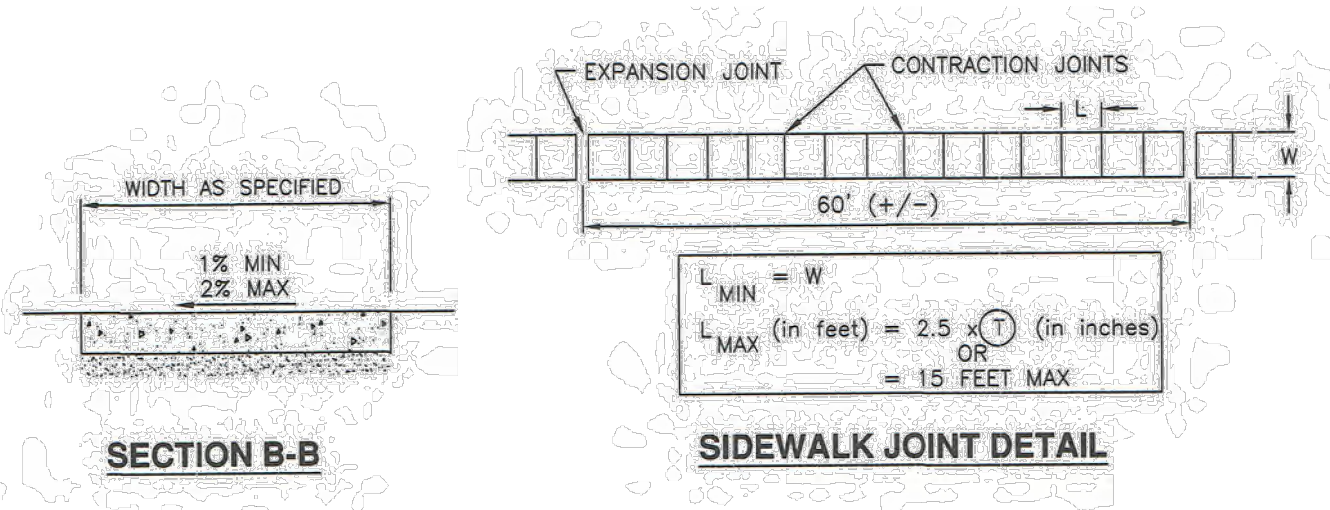
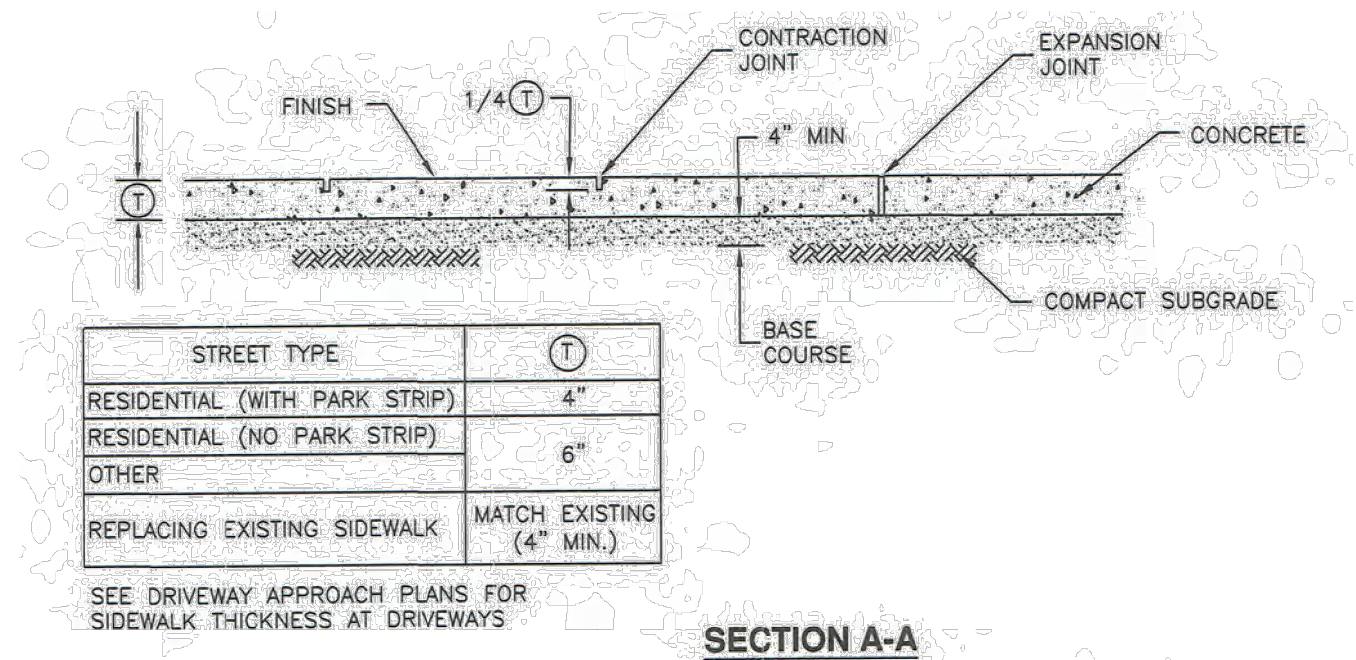
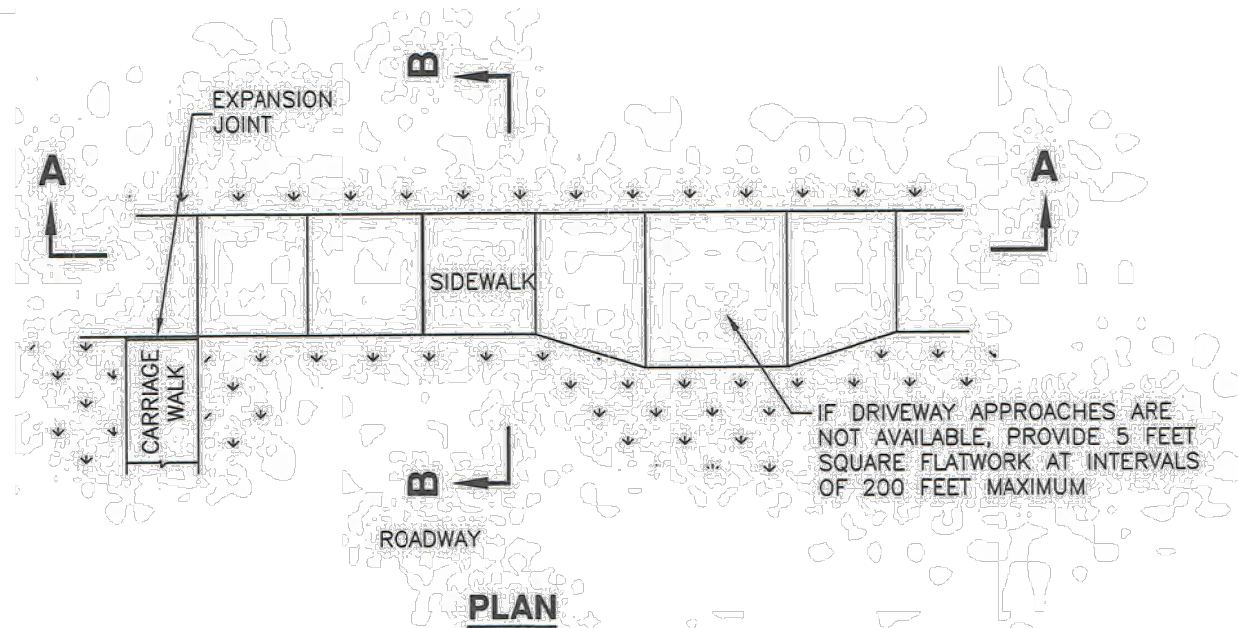
- (a) RUNNING SLOPE IS IN THE DIRECTION OF PEDESTRIAN TRAVEL. RUNNING SLOPE OF FLARE IS PARALLEL TO BACK OF CURB  
(b) CROSS SLOPE IS PERPENDICULAR TO DIRECTION OF PEDESTRIAN TRAVEL

**SLOPE TABLE**

**C**  
TYP  
APWA 2025 - PLAN 236.1  
NOT TO SCALE

REV NO.	COMMENT	DATE
 <b>SUNRISE ENGINEERING</b> 363 EAST MAIN STREET, SUITE 201 VERNAL, UTAH 84078 TEL 435.789.7364 • FAX 435.652.8416 www.sunrise-eng.com		
THE KITCHEN PICKLEBALL COURTS		
ASPHALT, CURB, ADA ACCESS DETAILS		
SEI NO. XXXX	DESIGNED JMI	DRAWN JMI
CHECKED AA	SHEET NO. 3 of 7	

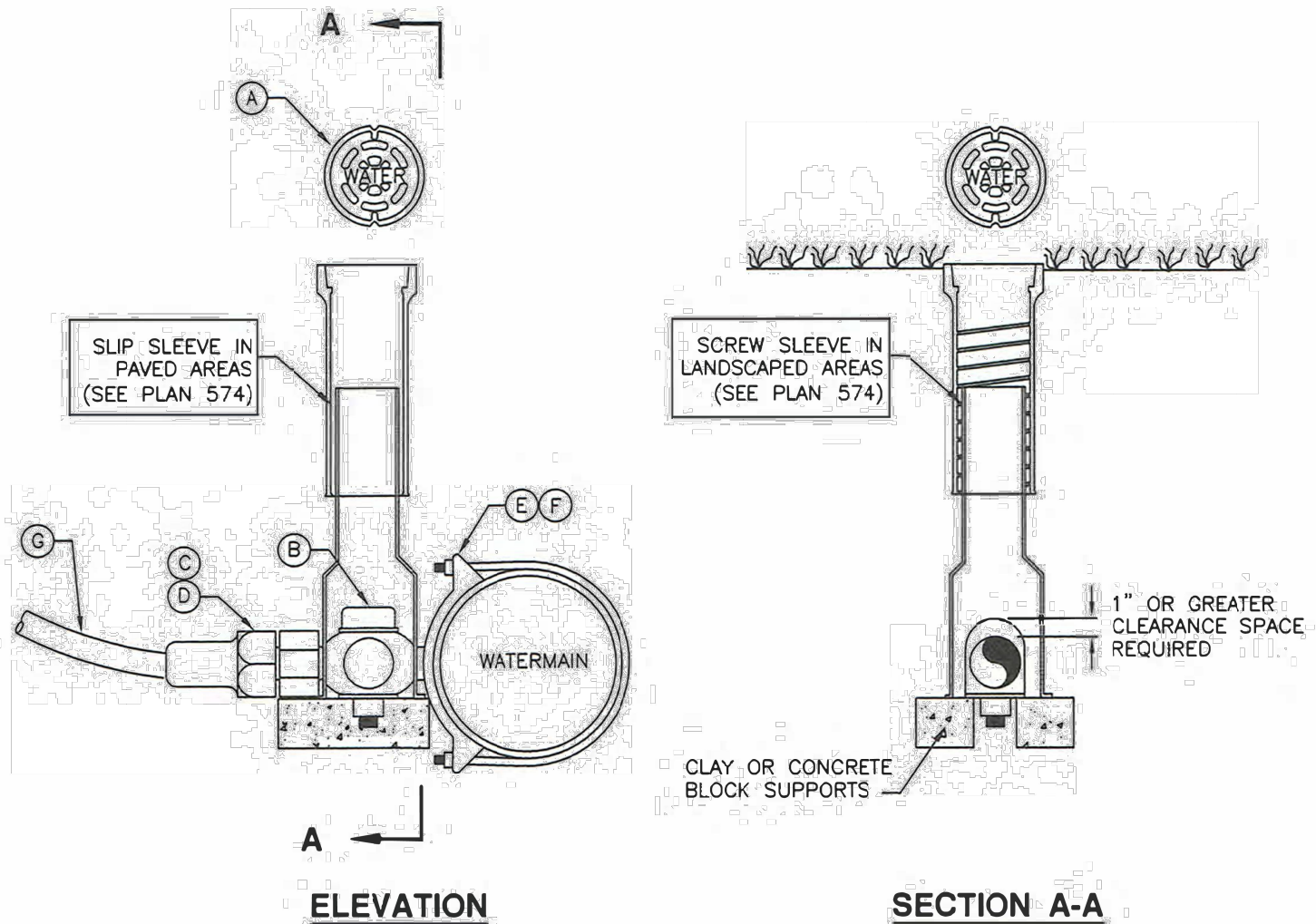




D  
TYP APWA 2025 - PLAN 231  
NOT TO SCALE

REV NO.	COMMENT	DATE
<div> <div> <b>SUNRISE</b> ENGINEERING                 </div> </div> <div>                     363 EAST MAIN STREET, SUITE 201                      VERNAL, UTAH 84078                      TEL 435.789.7364 • FAX 435.652.8416  <a href="http://www.sunrise-eng.com">www.sunrise-eng.com</a> </div>		
THE KITCHEN PICKLEBALL COURTS		
SIDEWALK DETAILS		
SEI NO. XXXX	DESIGNED JMI	DRAWN JMI
CHECKED AA	SHEET NO. 4 of 7	






LEGEND			
No.	*	ITEM	DESCRIPTION
(A)		VALVE BOX WITH LID	2 PIECE CAST IRON
(B)		CORPORATION STOP	BRASS
(C)		COPPER ADAPTER	
(D)		FLARE OR PACK JOINT COPPER ADAPTER	
(E)		SERVICE SADDLE CLAMP	D.I., A.C., C.I.
(F)		SERVICE SADDLE CLAMP	P.V.C.
(G)		COPPER PIPE (SERVICE LINE)	TYPE K (SOFT)

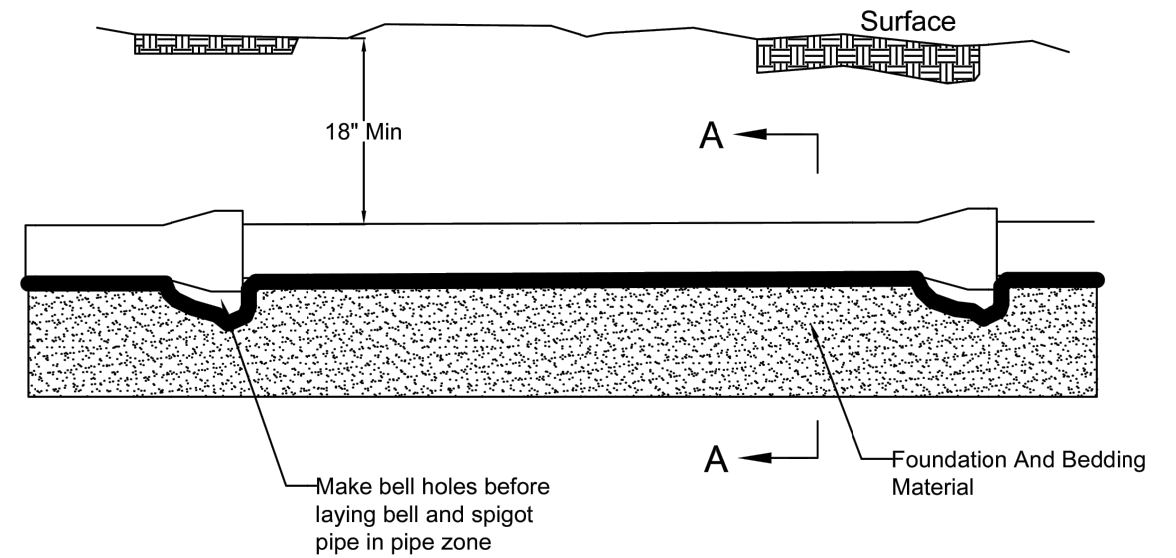
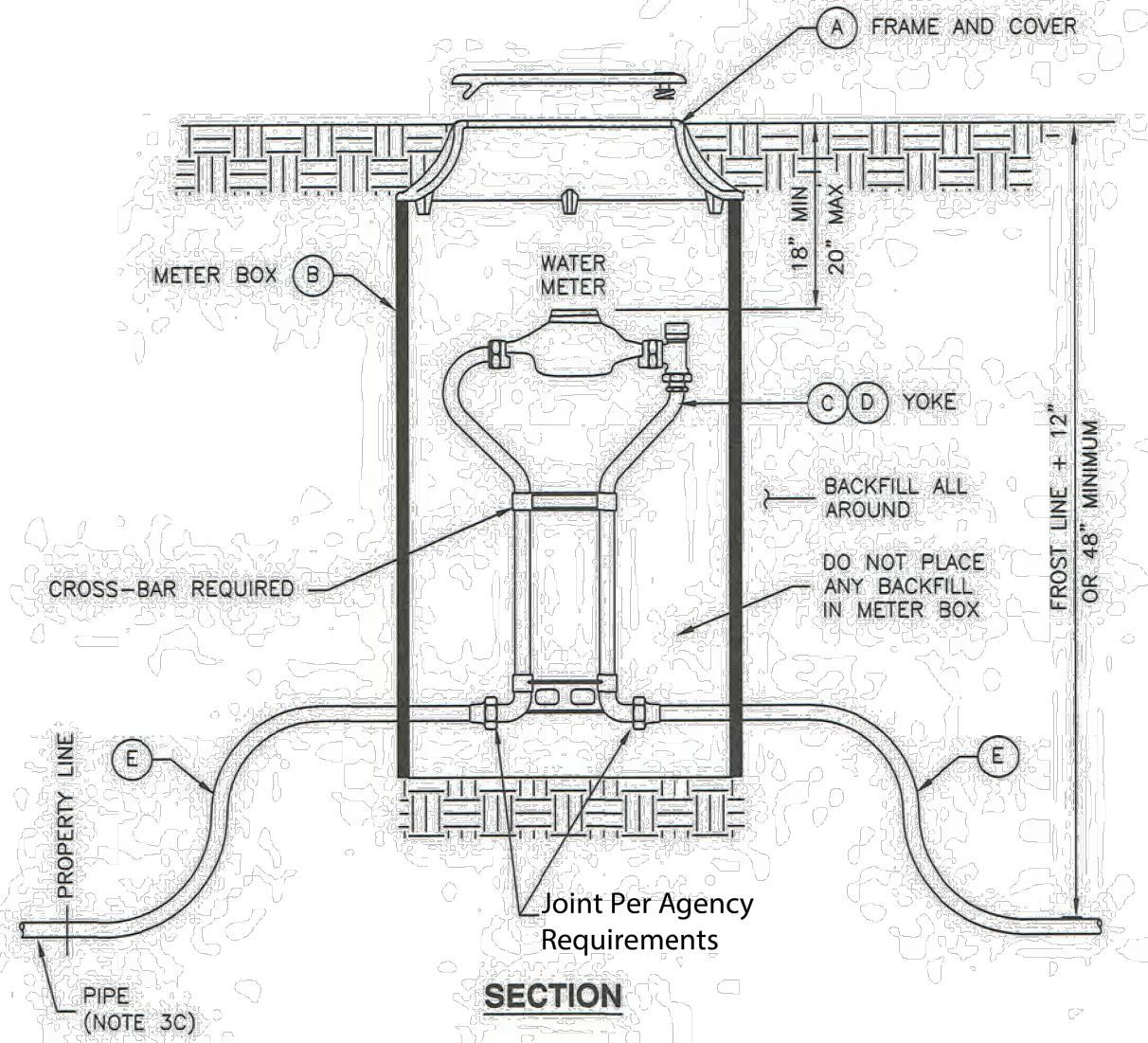
\* FURNISHED BY UTILITY AGENCY

1 1/2" and 2" Service taps

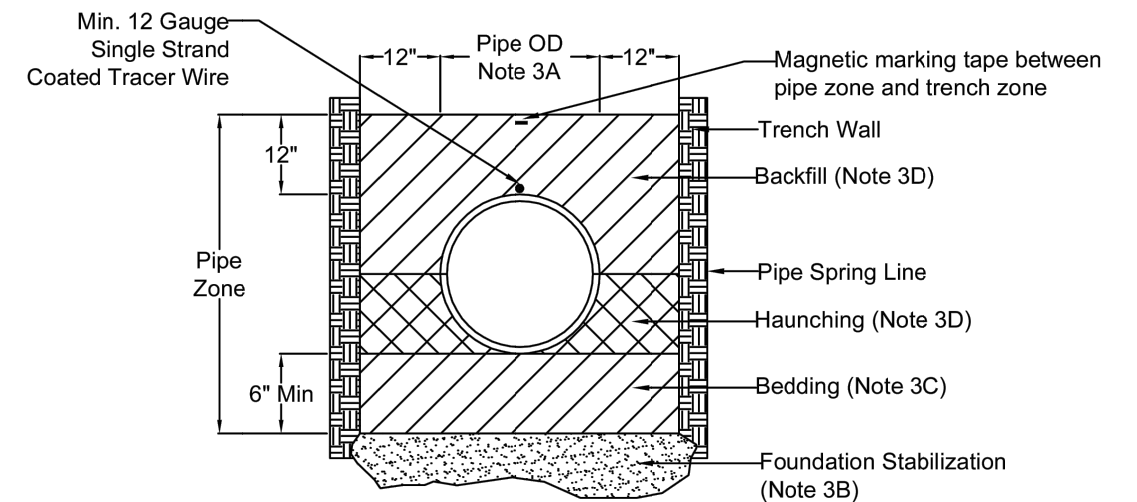
E	APWA 2025 - PLAN 552
	TYP NOT TO SCALE

REV NO.		COMMENT		DATE	
		<div><div></div><div><b>SUNRISE</b> ENGINEERING</div></div> <div>363 EAST MAIN STREET, SUITE 201 VERNAL, UTAH 84078 TEL 435.789.7364 • FAX 435.652.8416 <a href="http://www.sunrise-eng.com">www.sunrise-eng.com</a></div>			
THE KITCHEN PICKLEBALL COURTS					
WATER SERVICE DETAILS					
SEI NO.	DESIGNED	DRAWN	CHECKED	SHEET NO.	
XXXX	JMI	JMI	AA	5 of 7	





Elevation View




Section A-A

LEGEND			
No.	*	ITEM	DESCRIPTION
(A)		FRAME AND COVER	CAST IRON COVER
(B)		METER BOX (18" TO 21" DIAMETER) (30" TO 36" DEEP)	CORRUGATED PE, PVC, CMP OR MATERIAL ACCEPTABLE TO AGENCY
(C)		3/4" METER YOKE	OPTIONAL BACKFLOW PROTECTION PER AGENCY REQUIREMENTS
(D)		1" METER YOKE	OPTIONAL BACKFLOW PROTECTION PER AGENCY REQUIREMENTS
(E)		COPPER PIPE	TYPE K (SOFT)

\* FURNISHED BY UTILITY AGENCY

F  
TYP APWA 2025 - PLAN 521  
NOT TO SCALE

REV NO.	COMMENT	DATE
 <b>SUNRISE</b> ENGINEERING 363 EAST MAIN STREET, SUITE 201 VERNAL, UTAH 84078 TEL 435.789.7364 • FAX 435.652.8416 www.sunrise-eng.com		
THE KITCHEN PICKLEBALL COURTS		
WATER METER, BACKFILL DETAILS		
SEI NO. XXXX	DESIGNED JMI	DRAWN JMI
CHECKED AA	SHEET NO. 6 of 7	







Concrete Pipe: Follow ASTM C 1479  
"Standard Practice For Installation Of Precast Concrete Sewer, Storm Drain, And Culvert Pipe Using  
Standard Installations

Plastic Pipe: Follow ASTM D 2321  
"Standard Practice For Underground Installation Of Thermoplastic Pipe For Sewers And Other Gravity-flow Applications"

Corrugated Metal Pipe: Follow ASTM A 798  
"Standard Practice For Installing Factory-made Corrugated Steel Pipe For Sewers And Other Applications"


 APWA 2025 - PLAN 382  
 NOT TO SCALE

REV NO.	COMMENT			DATE
 <div> <h1>SUNRISE</h1> <h2>ENGINEERING</h2> </div>		363 EAST MAIN STREET, SUITE 201 VERNAL, UTAH 84078 TEL 435.789.7364 • FAX 435.652.8416 <a href="http://www.sunrise-eng.com">www.sunrise-eng.com</a>		
		<h3>THE KITCHEN PICKLEBALL COURTS</h3>		
<h2>SEPTIC PIPE BACKFILL DETAILS</h2>				
SEI NO.	DESIGNED	DRAWN	CHECKED	SHEET NO.
XXXX	JMI	JMI	AA	7 of 7