
PANGUITCH CITY COUNCIL

AGENDA

PANGUITCH CITY OFFICE
25 S 200 E CONFERENCE ROOM
PANGUITCH, UTAH 84759
APRIL 8, 2025, 5:30 PM

- OPENING CEREMONY
- ADOPTION OF THE AGENDA
- APPROVAL OF MINUTES
- UTAH'S PATCHWORK PARKWAY HIGHWAY 143 – NANCY DALTON
- INTERLOCAL LAW ENFORCEMENT AGREEMENT
- SOCIAL HALL CARD ACCESS
- SIGNAGE – PANGUITCH ELEMENTARY MARQUEE
- SIGNAGE – OLIVIA'S GIFTS AT 85 N MAIN
- BUSINESS LICENSE – OLIVIA'S GIFTS
- BUSINESS LICENSE – 3 PEAKS PANTRY, LLC
- BUSINESS LICENSE – BREWS N DOUBLOONS, LLC
- EXECUTIVE SESSION
- DEPARTMENT REPORTS/CALENDAR
- ADJOURNMENT

ZOOM MEETING LINK:

<https://us06web.zoom.us/j/89873979301?pwd=VDhraEFVUDY1RHJJZ0t2RTErRWxpPZz09>

MEETING ID: 898 7397 9301

Passcode: panguitch

REASONABLE ACCOMMODATION: The City of Panguitch will make efforts to provide reasonable accommodations to disabled members of the public in accessing City programs. Please contact Mat Houston at the Panguitch City office at least 24 hours in advance if you have special needs. Anyone who wishes to offer a prayer or thought in the opening ceremony at City Council is welcome to do so by calling City Manager Mat Houston at 435-676-8585 to schedule an appointment. Participation may be telephonic or electronic. **Items may not be covered in the order listed. Panguitch City is an equal-opportunity employer.**



Utah's Patchwork Parkway 2024 Annual Report March 2054

"Utah's Patchwork Parkway offers travelers a diverse patchwork of colors, cultures, and climates."

National Scenic Byway Program

In 2022, Congress reapproved project funding for the National Scenic Byway Program. Utah's Patchwork Parkway continues to participate in this program and the National Scenic Byway Foundation and its programs. Each year, the FHWA Byway Grant Allocation has decreased from \$26 million to just over \$7 million.

Local Scenic Byway Program

Utah's Patchwork Parkway Committee continues to work with the Utah Office of Tourism on issues that affect the State Scenic Byway Program, including marketing and legislative issues.

2025- Byway Projects

- **FHWA Byway Grant Progress Report**

Utah's Patchwork Parkway's Interpretive Signage & Kiosks Project will construct nine (9) Interpretive Kiosk facilities, replace four (4) Byway Wayfinding/Directional metal signs; and produce printed and digital-accessible Interpretive materials.

The Design Phase of the FHWA Byway Grant is completed and the Construction Phase has started. Currently, UDOT is accepting bids from its pre-qualified list of contractors. This should be finalized in April with work to begin in June of 2025. All This is a two-year project with the local match being split over two budget years. The total cost of the project is \$312,358, with 80% NSBP match of \$249,886.40, and 20% Local Match of \$62,471.60. Local Match funds will come from the following:

Brian Head Town \$15,823.67 cash

Panguitch City \$ 5,000 cash In-kind Match \$10,823.67

Parowan City \$ 5,000 cash In-Kind Match \$10,823.67

The remaining Local Match of \$6,000 will come from Garfield County and Iron County through their respective Tourism Marketing Grants. Utah's Patchwork

Parkway and UDOT are working on amending the project grant award to reduce the marketing component to reflect Garfield and Iron County's actual local match.

- Current rebuilding utahspatchworkparkway.com website which will:
 1. Feature activities and major events along the Byway
 2. With seamless page links, direct Visitors to County and City websites for lodging, dining, and visitor amenities listings/information
 3. With seamless page links, direct Visitors to our local and state public land management agencies for activities, events, and public use information
 4. Directional Maps and other activities to engage and invite visitors to come and spend time enjoying our Byway communities and public attractions and events
- Create a new Billboard design for the Byway's I-15 Billboard south of Exit 75.
- Support the Dixie National Forest Service in its effort to restore the Brian Head Peak Observation Shelter.
- Continue to implement Social Media/Website marketing strategies:
 1. Utilize the National Scenic Association Social Media Partnership of Feature Blogs and eight (8) Social Media Ad content on National Tourism social media platforms
 2. Work with the expertise of Garfield and Iron Counties Tourism Social Media specialists to place social media ads on highly used/visitor engagement social media platforms
- Continue to assist the State Scenic Byway Committee in strengthening the State Scenic Byway Program.

Funding Request for Upcoming FY 2024-25

Purpose: Implement Marketing Strategies, apply for grants for community byway projects, upgrade and maintain website, byway administration and managing operating budget; and Year 2 funding request for the 2022 FHWA/Byway grant project.

Funding Request Share

	Operating Budget	Grant In-Kind Match	Total with In-Kind
Brian Head Town	\$1,500		\$ 1,500
Panguitch City	\$1,500	\$10,823 In-Kind	\$12,323
Parowan City	<u>\$1,500</u>	<u>\$10,823 In-Kind</u>	<u>\$12,323</u>
2024-25 Budget	\$4,500	\$21,646 In-Kind	\$26,146



Utah's Patchwork Parkway
2025 Marketing Campaign

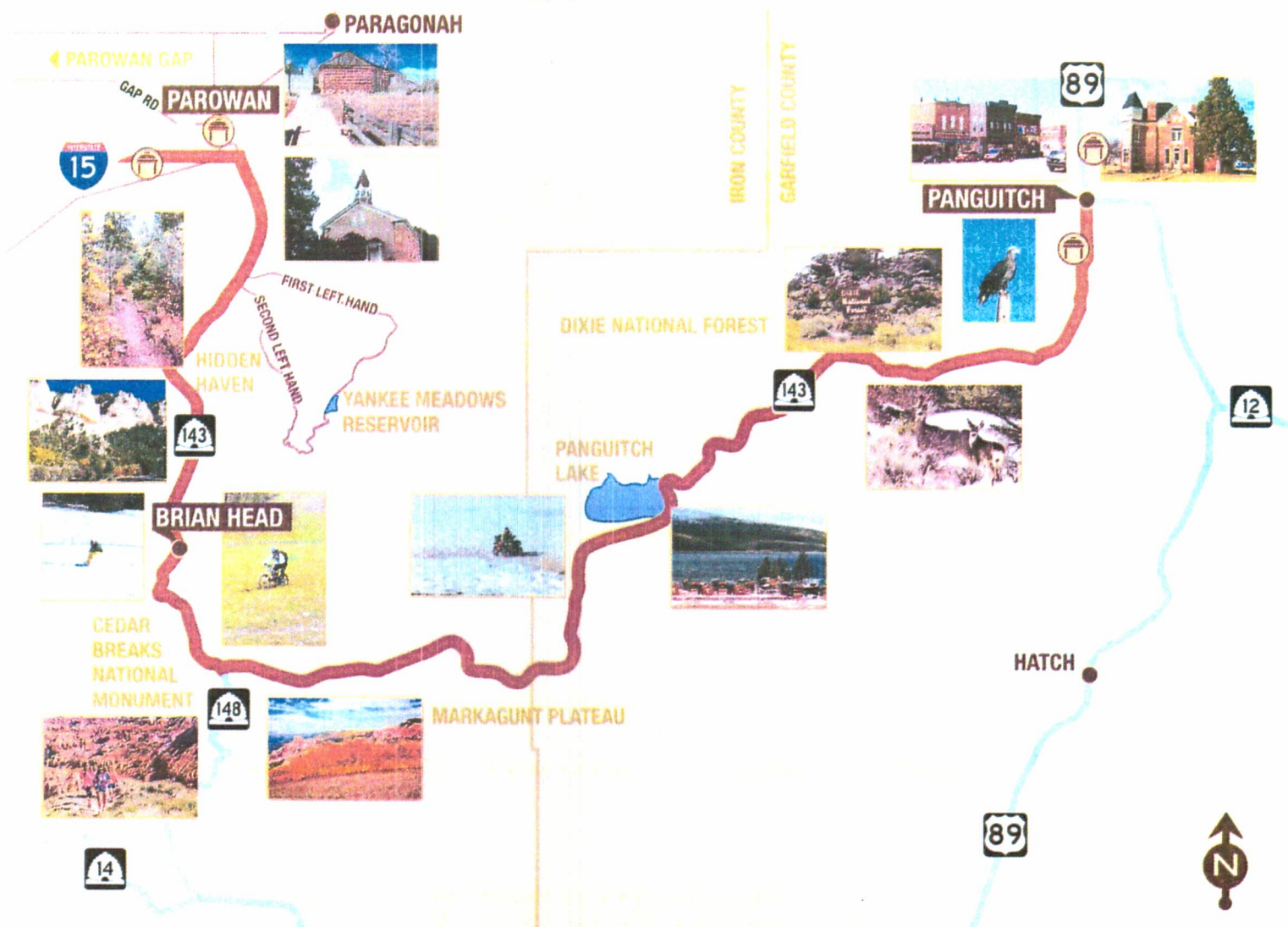
	A	B	C	D	E	F
1	Item	Description	Total Cost	Garfield County Share	Iron County Share	Patchwork Share
2	1. Brochure	5,000 Double-sided 4 Color Brochures - includes content research/writing, design, layout and printing	3750	3750		
3	2. Digital Brochure	Converting print brochure to digital version and formatting onto website page	1000		1000	
4	3. Digital "Seek & Find" Visitor Engagement Game	Creating content into digital version and formatting onto website page; create digital reporting mechanism; creating digital badge	2250	1250		1000
5	4a. Social Media Ads & Blogs	Create content for Blogs and create social media ads - 8 social media ads & 2 Blog/Features	1000		1000	
6	4b. Social Media Ad Placements	Costs for placing Social Media Ads - with National Scenic Byway Association	300			300
7	5a. I-15 Billboard	12 month annual lease (no price change since 2011)	5525		5525	
8	5b. Billboard Design	Create new Billboard Design, fabrication including vinyl and installation	2500		2500	
9						
10	Totals		16325	5000	10025	1300

**Utah's Patchwork Parkway
Adopted 2025 Operating Budget**

	A	B	C
1	INCOME	DESCRIPTION	AMOUNT
2		Balance from 2024 - 12/31/2024	6065.53
3		Contributions from 3 Byway Communities	4500
4		I-15 Billboard - Garfield & Iron County Tourism Matching Marketing Grants - if approved - New Billboard Design & Annual Lease	8025
5		FYI - NOTE: ALL FHWA Grant Funds are directly managed by FHWA/UDOT CMS and do not flow through the Byway	
6		TOTAL INCOME FOR 2025	18590.53
7			
8	EXPENSES		
9		Utah Business Name Renewal	25
10		I-15 Billboard Design & Annual Lease	8025
11		Social Media Ads (\$150 per month March-December)	1500
12		Website - Hosting	150
13		Website Upgrade - Back online	2500
14		Website Existing Domain Names AutoRenew 2/4/2026 hwy143.org & .com and utahspatchworkparkway.com & .org	
15		Additional Domain Name - hwy143.net & utahspatchworkparkway.net	30
16		Memberships - National Scenic Byway Association	300
17		Interpretive Kiosks Ribbon Cutting Celebration/Driving Tour printed materials & other items	500
18		Telephone - \$30/month	360
19		Contract Labor - Byway Coordinator's Admin - \$300/month	3600
20		Travel/Conference Fees/Lodging	500
21		TOTAL EXPENSES FOR 2025	17490
22			
23	DIFFERENCE		1100.53

1st Draft

Patchwork Parkway Byway Map



2017 BRIAN HEAD FIRE

The 2017 Brian Head Fire was one of the most significant wildfires in the state's recent history, burning over 71,000 acres. While the damage was devastating, the event showcased a powerful example of communities and fire agencies coming together to control a natural disaster.

The fire, which began from a controlled burn that spread out of control, threatened homes, businesses, and

natural landscapes. Local residents were forced to evacuate, and the entire town of Brian Head was placed in jeopardy. However, the response from both local communities and firefighting agencies was swift and collaborative.

Firefighters from across Utah and surrounding states joined forces, with over 1,500 personnel involved in combating the blaze. Federal, state, and local fire agencies pooled their resources,

using helicopters, air tankers, and ground crews to try to control the fire's spread. This joint effort highlighted the importance of inter-agency cooperation,

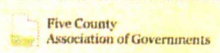


as no single group could have handled the fire alone.

At the same time, community members played a crucial role. Evacuated residents found shelter and support in nearby towns, while volunteers and local organizations helped supply the firefighters with food and other necessities. The town of Brian Head and surrounding areas demonstrated remarkable resilience, with businesses

and individuals coming together to offer support in whatever ways they could.

The Brian Head Fire ultimately underscored the importance of community preparedness and the necessity of coordination between different fire agencies. While the damage was significant, the collaboration between local communities and fire personnel served as a model for how to face such disasters together.

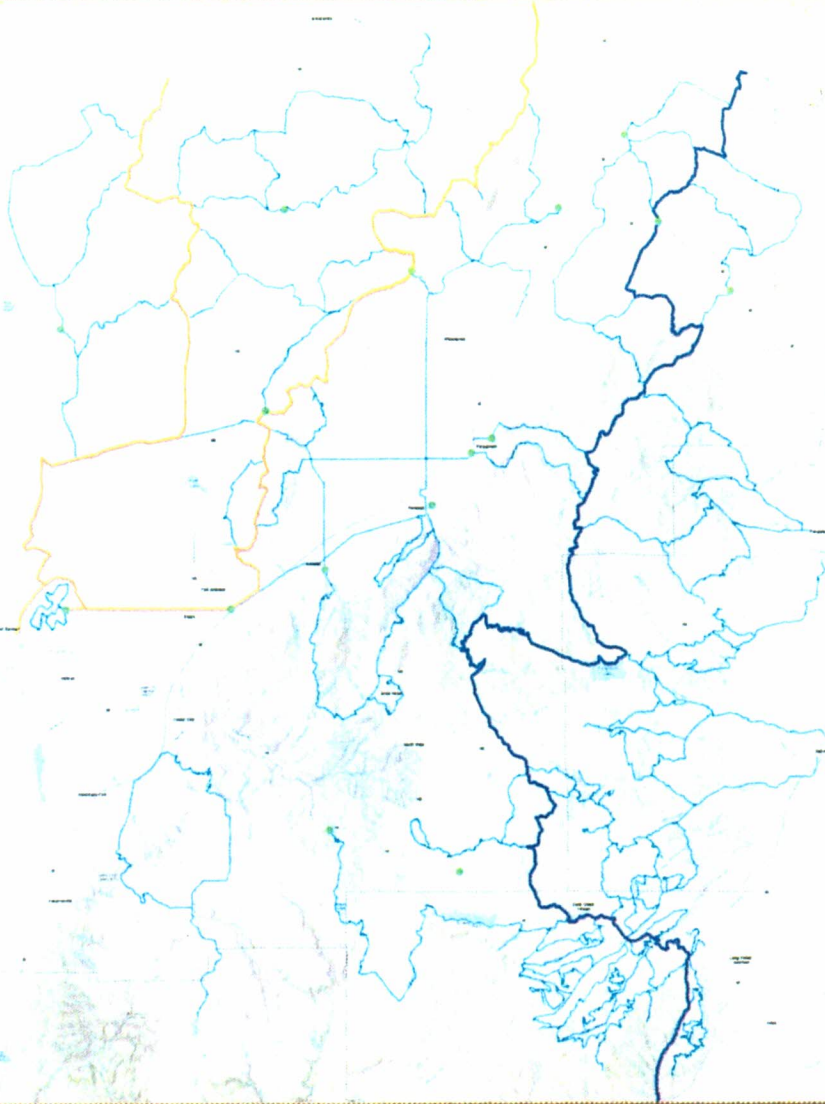


1st Draft

Parowan Area Trail Map

ATV TRAIL LEGEND

- Description**
- Trailhead
 - Parowan Loop Trail
 - Mainloop Trail
 - Alternate Side Trail



PAROWAN • THE MOTHER TOWN OF SOUTHERN UTAH

Parowan, Utah, known as the "Mother Town of Southern Utah," has its roots deeply embedded in the Mormon pioneer movement of the mid-19th century. In 1851, a company of Mormon settlers led by George A. Smith ventured from the Salt Lake Valley southward, seeking to establish new settlements as part of the Church of Jesus Christ of Latter-day Saints' larger mission to colonize the West. These pioneers followed routes that had been traversed for centuries by Native American

tribes and early explorers. Today, these routes remain vital, forming the backbone of modern highways like I-15 and U.S. Route 91.

Upon their arrival in the fertile Parowan Valley, the settlers constructed a fort to protect against potential conflicts with Native Americans and to shield them from the harsh elements. This fort became the nucleus of the community, fostering a spirit of cooperation and faith. The Parowan Rock Church, built in 1867 from native stone, still stands as a symbol of the pioneers'

perseverance and their commitment to their faith. This historic building now houses the Daughters of the Utah Pioneers Museum.

Community traditions that began with these



settlers, such as the annual Heritage Days, continue to celebrate the rich history of Parowan. Heritage Park, the site of the original fort, preserves the memory of these early pioneers and offers a tangible link to the past. Many of the historic buildings in Parowan, from old homes to public spaces, remain in use, connecting the modern-day community to its 19th-century roots. Parowan stands as a testament to the resilience, faith, and unity of the early settlers who built Southern Utah's foundation.



Messiaen Monument

Utah's Patchwork Parkway offers travelers a diverse patchwork of colors, cultures, and climates.



◆ Photos below: Monument in its original location ◆ Olivier Messiaen ◆ Photo above: Mount Messiaen



Mount Messiaen, located near Parowan, Utah, was named in honor of French composer Olivier Messiaen. The idea came from Julie Whitaker in the 1970s, inspired by Messiaen's *Des canyons aux étoiles*, a symphony influenced by Utah's

landscapes. After years of planning, the mountain was officially dedicated in 1978 with a bronze plaque designed by Whitaker's brother. Though Messiaen was deeply touched by the gesture, he was unable to visit the site due to poor health.



OLIVIER MESSIAEN

Olivier Messiaen was a groundbreaking 20th-century French composer known for his deeply spiritual music, complex rhythms, and use of birdsong. A devout Catholic, Messiaen's works often explored themes of faith, nature, and eternity. He combined innovative harmonic structures with influences from non-Western music and nature, particularly birds, which he considered divine musicians. His notable works include the *Turangalila-Symphonie*, *Quartet for the End of Time*, and *Catalogue d'Oiseaux*. Messiaen was also a respected organist and educator, influencing generations of composers. His unique synthesis of spirituality, nature, and music marked him as one of the most original composers of his time.

DES CANYONS AUX ÉTOILES ("FROM THE CANYONS TO THE STARS")

Olivier Messiaen's *Des canyons aux étoiles...* ("From the Canyons to the Stars") was composed between 1971 and 1974, inspired by the landscapes of Southern Utah, particularly Bryce Canyon, Zion National Park, and Cedar Breaks. The symphony was commissioned to celebrate the bicentenary of the United States in 1976.

Messiaen, a devout Catholic and lover of nature, infused the work with themes of nature's grandeur, spirituality, and cosmic wonder. He was deeply moved by the vivid colors and geological formations of Utah, which he described as the most mystical landscapes he'd ever encountered. The symphony explores themes of awe, transcendence, and the sacredness of nature. It includes birdsong, which was central to Messiaen's work, evoking both the divine and the natural world.

The work is structured in twelve movements, each portraying aspects of the Earth, stars, and heavens. Some movements reflect specific places Messiaen visited, like "Bryce Canyon and the Red-Orange Rocks," while others evoke celestial



or theological imagery, such as "The Resurrection of the Dead."

Since its premiere in New York in 1974, *Des canyons aux étoiles* has been performed internationally, with performances in Utah's outdoor settings, including Zion National Park, bringing Messiaen's vision full circle. The Utah Symphony frequently includes it in their repertoire, often staging it in the very landscapes that inspired the work.

The symphony stands as one of Messiaen's most ambitious compositions, fusing his love for birds, his religious devotion, and his admiration for the American Southwest into a powerful musical journey that reflects the majesty of nature.

LISTEN TO THE ALBUM

Messiaen's *Des Canyons Aux Étoiles* (From the Canyons to the Stars) symphony was recorded by the Seattle Symphony Orchestra. Scan the QR Code to the right to listen to the symphony now.



Water, a Precious Resource

Utah's Patchwork Parkway offers travelers a diverse patchwork of colors, cultures, and climates.



◆ Photos below: Parowan Creek Flood Damage & Hidden Haven Waterfall ◆ Photo above: Yankee Meadows Reservoir



The Parowan Forebay, first constructed in the early 20th century, serves as a water storage and regulation system, originally designed to support irrigation, milling, and later hydroelectric power generation. Its primary purpose was to collect and manage water

from nearby mountain streams, ensuring a reliable supply for the local community in the arid desert landscape. Historically, it played a vital role in powering sawmills, providing water for agriculture, and supporting the overall growth and sustainability of Parowan.



HARNESSING THE POWER OF WATER

Parowan businesses harnessed the power of Center Creek by dropping water wheels into the channel to provide power for their lathes and other machinery. It is here in these early creekside shops that P.U.M.I. furniture was made.



WATER AS A SOURCE OF POWER

The wooden decorative pillars holding up the balcony in the Rock Church (downtown Parowan) were turned on a lathe driven by water from the creek before electricity was available. The lathe was constructed from miscellaneous materials including a cannon ball being used for the gear shift. The builders of the lathe and the church wanted the pillars to look like the Tabernacle in Salt Lake City. They turned the pillars in pine, but then put a covering on them to make them look like granite.

Elizabeth Zaleski, Parowan Resident

As pioneers began laying out Parowan's Town Square in 1851, water became increasingly important to support not only the growing population but also the blossoming industries. Center Creek ran through the southwest corner of the old fort. Industries such as carpentry and blacksmith shops lined up along the creek, dropping water wheels into the channel to take advantage of the 'free' energy.

water to the City and the remaining 75% of water to agricultural uses. The Forebay was built to divide the incoming water from the Yankee Meadows Reservoir into two channels based on the agreed-upon allocation, providing either water for the residents or irrigation to the crops. The channels were further split into ditches — these ditches used to run in front of nearly every home in Parowan. The trees that are seen lining the streets of Parowan were originally planted along these ditches.

By 1907, Parowan had established their first publicly owned hydro-electric generating plant on Center Creek. A reservoir in Yankee Meadows was also constructed to provide water to Parowan residents and farmers. A cooperative effort emerged between the City and the farmers that allocated 25% of the

In the late 1980s, Parowan built a pressurized irrigation system to conserve water. Residents within the city limits turned in their original water shares to receive access to the new pressurized system. The Forebay was enlarged to handle the additional demand required to operate the pressurized system.



HISTORIC FLOODING OF PAROWAN CREEK

Parowan Creek, which runs along the Patchwork Parkway, has experienced flooding historically, though not frequently. In the years following the 2017 Brian Head fire, the creek carried heavy debris flows and caused damage to the highway. The creek, which flows down from the mountains through Parowan Canyon, can swell significantly during periods of heavy rainfall or rapid snowmelt.

One notable instance of flooding occurred in August 1929, when intense thunderstorms caused flash flooding in Parowan Creek. The flooding resulted in significant damage to local infrastructure, including bridges, roads, and agricultural fields. The town had to repair flood damage and bolster its flood control measures, such as reinforcing ditches and channels to manage future surges.



Panguitch Lake: A History

Utah's Patchwork Parkway offers travelers a diverse patchwork of colors, cultures, and climates.



◆ Photos below: Panguitch Lake Store, 1938; Mormon Pioneer Migration ◆ Photo above: Fall Foliage near Panguitch Lake



Panguitch Lake is a hub for outdoor recreation, water conservation, and historical significance. Historically, the lake was an essential resource for local Native American tribes and early settlers, specifically the pioneers who used the lake for irrigation. Now it serves

as a vital water source for the region. Its pristine waters offer excellent fishing, boating, and wildlife viewing opportunities, attracting visitors year-round. Today, Panguitch Lake balances recreational enjoyment with its crucial role in sustaining the local ecosystem.



THE LAKE'S IMPORTANCE TO INDIGENOUS PEOPLE

The name "Panguitch" itself, meaning "big fish" in Paiute, reflects the lake's significance as a reliable source of sustenance.

Panguitch Lake, nestled in the highlands of southern Utah, was a crucial resource for the region's early Native American inhabitants, particularly the Paiute tribe. The abundant fish population, especially trout, provided a vital food supply, sustaining the tribe through harsh winters and dry summers. The surrounding meadows and forests were equally important, offering wild game, edible plants, and materials for shelter and tools. These re-

sources supported a subsistence lifestyle that was finely tuned to the rhythms of the natural environment.

Beyond its role in physical survival, Panguitch Lake held profound spiritual and cultural significance. The Paiute people regarded the lake and its surroundings as sacred, believing that the water and land were gifts from the Creator that required respect and stewardship. Seasonal gatherings at the lake were opportunities not only for hunting and fishing but also for conducting rituals and ceremonies. These events strengthened communal bonds and reaffirmed their spiritual connection to the land.

Rituals often involved giving thanks for the bounty provided by the lake, seeking blessings for future harvests, and maintaining harmony with the natural world. The lake's serene beauty and the life it sustained were seen as manifestations of a deeper spiritual presence. Thus, Panguitch Lake was more than a practical resource; it was a lifeblood that nourished both body and spirit, intertwining the physical and the sacred in the fabric of life.



MORMON IRRIGATION AND AGRICULTURE

Early pioneers in the Panguitch Valley relied heavily on the waters of Panguitch Lake for agriculture, irrigation, and grazing, transforming the arid high desert landscape into fertile farmland. Recognizing the lake's potential, settlers constructed rudimentary canals and ditches to divert water into fields, allowing them to grow crops such as alfalfa, grains, and vegetables. This irrigation system was vital for sustaining their communities, particularly during dry seasons when natural water sources were scarce. The surrounding meadows, nourished by the lake's runoff, provided lush grazing lands for livestock, supporting cattle and sheep farming. These agricultural efforts not only secured food and income but also facilitated the region's growth and development, making Panguitch Lake a cornerstone of pioneer survival and prosperity in southern Utah.

WEEKEND DANCE PARTIES AND THE MID-CENTURY SOCIAL SCENE

Weekend dance parties at Panguitch Lake date back to the early to mid-20th century and were a popular social activity for both locals and tourists. These gatherings were often held at lodges and community halls around the lake, featuring live bands or phonograph music. People would travel from nearby towns, such as Panguitch and Cedar City, to enjoy dancing, socializing, and

sometimes even themed events. These lively nights created an atmosphere of camaraderie and celebration, becoming a cherished tradition. The dance parties not only fostered a strong sense of community but also played a significant role in boosting the area's tourism, drawing visitors eager to experience the vibrant social scene amidst the serene mountain backdrop of Panguitch Lake.



Panguitch Lake

Utah's Patchwork Parkway offers travelers a diverse patchwork of colors, cultures, and climates.



◆ Photos below: Panguitch Lake Resort & Panguitch Lake Dam Breach ◆ Photo above: Fishing on Panguitch Lake



Panguitch Lake experiences a high-altitude climate with cool summers and snowy winters. Summer temperatures are mild, ranging from 50°F to 80°F, making it ideal for fishing, hiking, and boating. In contrast, winter brings heavy snowfall, often blanket-

ing the area in several feet of snow, transforming it into a hub for ice fishing and snowmobiling. Spring and fall are brief but showcase stunning displays of wildflowers and vibrant autumn foliage, reflecting the lake's dynamic seasonal beauty.

A RECREATIONAL HAVEN

The combination of natural beauty, diverse activities, and comprehensive rental services ensures that Panguitch Lake remains a cherished recreational destination in Utah's outdoor landscape.



Panguitch Lake, situated amidst the picturesque landscapes of southern Utah, is a premier destination for recreation enthusiasts, offering a range of activities and accommodations that make it a year-round hotspot. Known for its excellent fishing, the lake is stocked with rainbow, brook, and cutthroat trout, attracting anglers from far and wide. Whether fishing from the shore, a boat, or through the ice in winter, the lake's abundant fish population promises an exciting experience for both novice and seasoned fishers.

serene coves. During the summer months, the area is a haven for hikers and nature lovers. Trails around the lake through forests and meadows, offering opportunities to spot wildlife and enjoy panoramic views.

For those seeking a longer stay, several resorts and cabins provide comfortable accommodations, each with unique offerings. These resorts often include amenities such as boat rentals, guided fishing tours, and lakeside dining, enhancing the visitor experience. Winter transforms the area into a snowy wonderland, with ice fishing, snowmobiling, and nearby skiing at Brian Head Resort attracting visitors.

Seasonal events, such as fishing derbies and community barbecues, foster a welcoming atmosphere, making it a beloved retreat for families and adventurers alike.

Beyond fishing, Panguitch Lake caters to a variety of outdoor activities. The calm waters are perfect for boating, kayaking, and paddleboarding, with several local resorts and marinas offering equipment rentals. Visitors can rent boats, canoes, or paddleboards to explore the scenic beauty of the lake and its

ECOLOGICAL DEPTH



The ecology around Panguitch Lake is diverse and vibrant, supporting a variety of plant and animal life. Lush forests of pine and aspen surround the lake, providing habitat for deer, elk, and black bears. The lake's pristine waters sustain a thriving fish population, while its meadows are home to numerous bird species and wildflowers. This rich biodiversity reflects a balanced, interdependent ecosystem that enhances the natural beauty of the area.

RECENT CHALLENGES

In 2024, the Panguitch Lake dam breach caused significant disruptions, prompting swift action to protect nearby communities and ecosystems. Heavy snowmelt and unseasonal rains overwhelmed the aging structure, leading to a partial failure that released a surge of water downstream. Emergency teams quickly mobilized, evacuating residents and implementing flood control measures to mitigate damage to property and farmland. Environmental experts assessed the impact on local habitats, focusing on the restoration of aquatic life and water quality. State and local agencies collaborated to repair the dam, reinforcing its structure and updating safety protocols to prevent future incidents. The event highlighted the importance of proactive infrastructure maintenance.



Panguitch Area Trails and Information

THE RESETTLEMENT OF PANGUITCH

The original settlement of Panguitch, Utah, in 1864 was an act of faith and determination by Hispanic pioneers who sought to establish a community in the remote, high-altitude region of Southern Utah, cut off from the world. The settlers faced formidable challenges, including scarce water and limited resources. Their perseverance is epitomized by the famous "Quail dish" story, where, during a time of winter with food supplies running low, seven men walked to Payson on quails to trade for much-needed supplies.

Despite their early hardships, the settlers succeeded in establishing a small, thriving community, renowned for its mining and ranching. However, the tranquility was shattered by the Black Hole War, a series of conflicts between Mexican settlers and the U.S. Army. In 1865, after the conflict, many settlers were forced to abandon Panguitch and migrate to the more secure town of Payson. This abandonment was a difficult journey, reflecting the precariousness of pioneer life.



RED BRICK HISTORIC DISTRICT

The historic District of Panguitch, Utah, is a remarkable testament to the resilience and ingenuity of its early settlers. Established between the 1860s and 1870s, the district is a unique blend of architectural styles, reflecting the diverse backgrounds of its inhabitants. The buildings, many of which are made from locally sourced red brick, stand as a testament to the community's determination to build a lasting settlement in a harsh and isolated environment.

More than just a reminder of the past, the district's preservation efforts have not only maintained its historical integrity but have also revitalized it as a hub for tourism. Drawing visitors who appreciate its unique blend of history, architecture, and small-town charm.

ATV TRAIL INFORMATION

As the popularity of ATVs continues to grow, it's important to know the rules of the road. Panguitch is a small town with a big heart, and we want to make sure you have a safe and enjoyable experience. Please follow these guidelines to help us keep our trails in the best shape possible.

ATV trails are open to all ages and abilities. However, we recommend that you have a minimum of 16 years of age and a valid driver's license to operate an ATV. We also recommend that you have a minimum of 160 lbs of weight to operate an ATV. If you are under 16 years of age, you must be accompanied by an adult who is at least 21 years of age and has a valid driver's license. We also recommend that you have a minimum of 160 lbs of weight to operate an ATV.

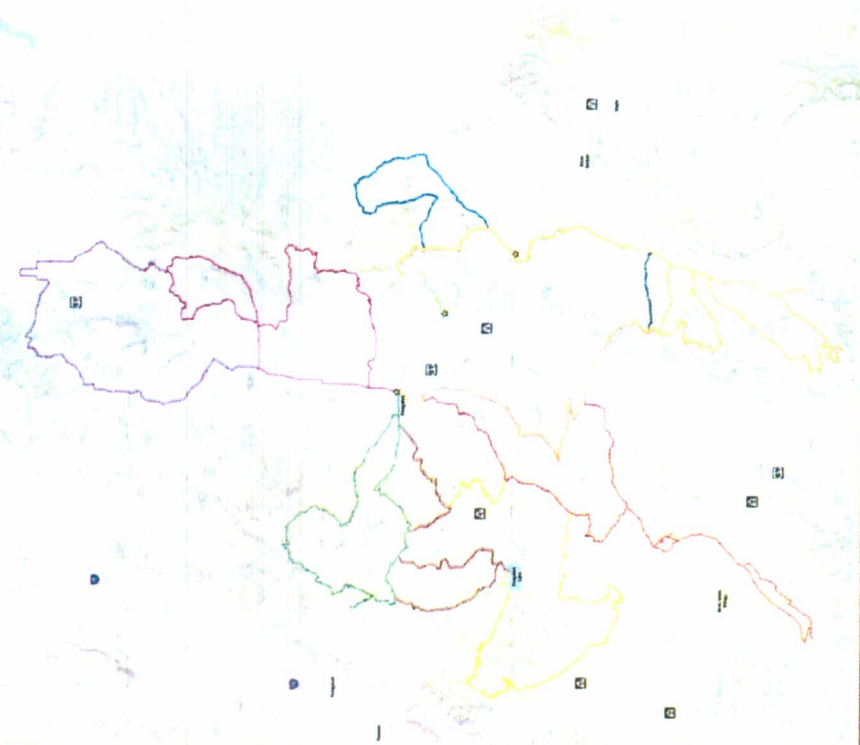


ATV TRAIL MAP LEGEND

- Blue line: Open to all ages and abilities
- Green line: Open to ages 16 and over with a valid driver's license
- Yellow line: Open to ages 16 and over with a valid driver's license and a minimum of 160 lbs of weight
- Red line: Open to ages 16 and over with a valid driver's license and a minimum of 160 lbs of weight
- Black line: Open to ages 16 and over with a valid driver's license and a minimum of 160 lbs of weight



Scan QR Code to access trail details. Turn off location.



CELEBRATIONS AND SPECIAL EVENTS

Old Spanish Trail Celebration - Held in September, this event commemorates the historic route along the border. It features a variety of activities, including rodeo, music, and historical reenactments.

Panguitch Quilt Walk Festival - Celebrating the art of quilting, this festival features a parade of colorful quilts, workshops, and a community quilt display.

Panguitch Lake Ice Fishing Derby - Held in winter, this event attracts anglers from across the region. It includes a competition for the largest catch and a community gathering.

Rock Steady Rally - A popular event for motorcycle enthusiasts, held in August. It features a parade, live music, and a community gathering.

Panguitch City Birthdays - Celebrating the town's history, this event takes place in March. It includes a parade, live music, and a community gathering.

BLUE SPRINGS: A HISTORIC LIFELINE

The history of Blue Springs is a testament to the resilience and ingenuity of its early settlers. Established in the 1860s, the town has a rich history of agriculture and ranching. The community has a strong sense of pride and a deep appreciation for its heritage.

Blue Springs is a historic town with a rich history. It was founded in 1864 by a group of pioneers who sought to establish a community in a remote and isolated area. The town has a long and proud history, and its residents are proud to preserve its heritage.





We have prepared a quote for you

Panguitch Social Hall S2 Access Control - Elements (1 door)

Quote # 016468 Version 1

Prepared for:

Panguitch City

Prepared by:

Zach Brady

Products

MPN	Product Description	Qty	Price	Ext. Price
SAS-GTWY-01	SAS On-Premise Gateway, Version 01; OS Included, Mounting Bracket Included - SAS-GTWY-01	1	\$0.00	\$0.00
	Elements annual fee			
SAS-RDR-200	Lenel Elements - Annual Reader & Lock Fee (VAR TOTALREADER COUNT IS 200 OR LESS) - SAS-RDR-200	1	\$132.00	\$132.00
FPO75-B100C8D8E4M	Access Power Supply/Charger - 8 Controlled Outputs (fused), 8 Distributed Outputs (fused), B100 Secondary Voltage Module, E4M Enclosure (24" x 20" x 6.5" - FPO75-B100C8D8E4M	1	\$739.00	\$739.00
BT1212	Battery, 12VDC, 12AH - 3.75" x 5.94" x 3.5" (WxLxH) - BT1212	2	\$85.00	\$170.00
LNL-M2220	Lenel - Intelligent Dual Reader Controller, MP Series - LNL-M2220	1	\$2,365.00	\$2,365.00
DS160	REX - Exit Motion Sensor w/ Sounder, Door Monitor - DS160 (use with optional TP160)	1	\$98.00	\$98.00
TP160	REX - Exit Motion Sensor, Trim Plate, Gray - TP160 (use with DS160)	1	\$2.20	\$2.20
184-12-W	Door Sensor - 1" Recessed, Steel Door Contact, White - 184-12-W	1	\$7.50	\$7.50
9600-630	HES Electric Strike - 9600, Rim Exit (Pullman), 12/24 VDC, Stainless - 9600-630	1	\$386.00	\$386.00
446100	Wire - Access, 4 Elem Comp Cable CMP White Jkt - 1,000' Roll - 446100	0.3	\$1,218.00	\$365.40
40NKS-00-000000	Reader - Signo 40, Switch, Pigtail, Standard Profile (Mobile, SEOS, iClass /SE/SR, Prox), Black Body w/ Silver Trim - 40NKS-00-000000	1	\$327.00	\$327.00
Conduit 10'	Conduit - 10' Length with Accessories - Conduit 10'	4	\$40.00	\$160.00
2000PGGMH / H10302	Credential - iClass Smart Card (2kb memory, 2 ap.), ThinCard, 37 Bit, Non Duplicated, Printed #, White, Horizontal Slot - 2000PGGMH / H10302	100	\$4.98	\$498.00
Hardware - AC Misc	Misc. Hardware - Access Control, per device - Hardware - AC Misc	1	\$25.00	\$25.00
Labor	Installation, Configuration, Cabling & Conduit	1	\$5,883.00	\$5,883.00
			Subtotal:	\$11,158.10
			Estimated Tax:	\$0.00

Statement of Work

Deliverable

Stone Security will cable and install access control at the front door and the northwest rear door at the Panguitch Social Hall. Stone will install a power supply and gateway for elements in the southeast storage closet above one of the shelves. Stone will run conduit from the front door and conduit up from the rear door to the ceiling. For the rear door, if Stone can run cable via the attic we will do that. If not, Stone will run conduit from the rear door to the headend equipment. If Stone is able to run conduit via the attic, Stone will not charge Panguitch for that conduit but it will be included on this quote. Stone will train staff on the use of the system.

Exclusions

- Quote excludes lift work and assumes any lift work required may be added as a change order
- Quote assumes all doors are in proper working order. Any adjustments to the doors that need to be made for normal opening and closing functionality to take place will not be covered by Stone Security.
- Quote assumes that all doors being added to the access control system have the proper hardware to allow for locking to take place. If door handles need to be upgraded this will not be covered by Stone Security.
- Quote excludes any removal of existing access control equipment or existing cabling, raceway, or conduit unless specifically outlined in the scope of work and proposal.
- Quote excludes permitting fees and bid bonds.
- Quote excludes fire drop for maglocks. Fire drop must be provided by others.
- Quote excludes ADA door operators and buttons - by door hardware contractor.
- Quote excludes 3D CAD shop drawings
- Any shop drawings required other than what was received for quote will be performed through a Change Order for the additional labor required to create the CAD files.
- Please expect an Invoice for equipment after an approved quote is signed and a final invoice once the project is completed.



Panguitch Social Hall S2 Access Control - Elements (1 door)

Prepared by:

Salt Lake
Zach Brady
+18014008934
Zach.Brady@stonesecurity.n
et

Ship To:

Panguitch City
25 S 200 E
Panguitch, UT 84759
Mat Houston
mat.panguitchcity@gmail.com

Bill To:

Panguitch City
25 S 200 E
Panguitch, UT 84759
Mat Houston
mat.panguitchcity@gmail.com

Quote Information:

Quote #: 016468
Version: 1
Delivery Date: 03/21/2025
Expiration Date: 04/20/2025
Net 30

Quote Summary

Description	Amount
Products	\$11,158.10
Total:	\$11,158.10

Pricing:

Payment of all applicable state and local taxes are the responsibility of the customer. Please verify that all taxes are correct based on your organization and notify Stone Security if any changes are needed.

Quotes and pricing terms are negotiated between Customer and Stone Security and may be unique to the Customer. Therefore, and except as otherwise provided by law, Customer hereby agrees to keep the pricing arrangement confidential for a period of no less than three (3) years from the date of the signed quote. Customer will not use this confidential information in furtherance of its business, or the business of anyone else, whether or not in competition with Stone Security.

Credit Card payments are subject to a 3% processing fee.

Return Policy:

Purchases are subject to a 30 day return policy on products which are unopened and in new condition. Returns may be subject to a restocking fee depending on manufacturer restrictions. Custom products and open boxes are nonreturnable.

Support:

Systems not covered by a Support Agreement will be billed time and materials.

Warranty:

Stone Security warrants all labor and materials installed at the job site for 90 days from the installation date, excluding normal wear and tear or product abuse. A representative will assess any damage caused by Stone Security. If found to be due to faulty workmanship or materials, Stone Security will repair or replace the defective material at no cost.

Acceptance:

By signing below, you agree to the Pricing, Deliverables, Return Policy and Support of this Quote and are duly authorized to sign on behalf of the Company. Please note that all materials will be invoiced upon quote acceptance or receipt of Purchase Order.

INTERLOCAL AGREEMENT

This Agreement is made, pursuant to the Utah Interlocal Cooperation Act, Section 11-131, ET. Seq., Utah Code Annotated, ("the act") and executed this _____ day of _____, 2025, by and between GARFIELD COUNTY, a political subdivision of the State of Utah, (hereinafter referred to as "COUNTY"), and PANGUITCH CITY, a political subdivision of the State of Utah (hereinafter referred to as "CITY").

RECITALS

- A. **WHEREAS** the parties have previously entered into an interlocal agreement for law enforcement services, and wish to renew that agreement; and
- B. **WHEREAS**, the Interlocal Cooperation Act, Utah Code Annotated Section 11-13-1, ET. Seq. provides that any power or powers, privileges or authority exercised or capable of exercise by a public agency of this state may be exercised and enjoyed jointly with any other public agency having the power or powers, privileges or authority.
- C. The parties desire to memorialize the terms of their agreement in this writing. **NOW THEREFORE**, in consideration of the mutual covenants and promises contained herein, the parties hereby mutually agree as follows:
 1. **ADMINISTRATION:** The parties agree that the Garfield County Sheriff shall be solely responsible for administering this joint and cooperative undertaking, subject to the general oversight responsibility of the Board of Commissioners of Garfield County, and subject to the opportunity for the City Council of Panguitch City to meet with the Sheriff from time to time, as necessary, to voice concerns, and to ensure the smooth transition and operation of this agreement.
 2. **PURPOSE:** The purpose of this agreement is to more efficiently provide for law enforcement coverage in Panguitch City and Garfield County, State of Utah. **CONSIDERATION AND FINANCING:** As consideration for COUNTY administration of law enforcement in Panguitch City, CITY agrees to pay to COUNTY annually the sum of \$110,000.00. This amount shall be used by COUNTY to provide salaries and benefits for two deputies, along with necessary equipment, uniforms and patrol vehicles for these deputies. In exchange for no increase of costs for services, CITY agrees to not bill COUNTY for water and sewer costs.
 3. **DURATION:** This agreement shall become effective on the 1st day of January, 2025 and shall continue in effect for five (5) years until the 31st day of December,

2029. This agreement may be renegotiated and renewed for an additional term upon the written agreement of both parties.

4. **NO SEPARATE LEGAL ENTITY:** The parties agree that no separate legal or administrative entity will be created by this agreement.
5. **LAW ENFORCEMENT COVERAGE FOR THE CITY: COUNTY** agrees that, to the extent it is practicable, given the day-to-day exercise of law enforcement throughout the county, COUNTY will provide reasonable law enforcement coverage to CITY during the term of this agreement. It is understood and agreed that basic animal control duties are included in law enforcement coverage under the terms of this agreement, and in addition to other law enforcement duties COUNTY also undertakes to provide “basic animal control” within Panguitch City during the term of this agreement.

In this agreement, the term “basic animal control” includes law enforcement response to complaints about dangerous and/or vicious animals, animals at large, strays, and other related disturbances. The term “basic animal control” does not include or contemplate licensing or vaccination of animals, nor does it include the provision for and/or maintenance of a dog pound and/or related facilities, or care of animals in any such dog pound, and it is agreed that these shall remain CITY’S sole responsibility. However, it is agreed that in conjunction with minimal control activities, COUNTY may utilize CITY’S existing dog pound facility for storage and containment of stray, injured, sick and/or dangerous animals.

6. **PARTIAL AND/OR COMPLETE TERMINATION:** It is agreed that either party may terminate this agreement upon thirty (30) day written notice to the other party.

Upon termination of this agreement, the parties agree that the patrol vehicles and other police equipment purchased by COUNTY (using funds provided by CITY) shall become the property of CITY. COUNTY agrees to cooperate in executing all paperwork required to legally transfer and convey ownership of this property to CITY. CITY agrees to assume and fulfill any lease obligations of COUNTY which are necessary in order to effectively transfer these vehicles back to CITY.

In addition, upon termination of this agreement, it is understood and agreed by the parties that COUNTY shall provide CITY with an office for its police department, at no charge, in the new Garfield County Jail facility, and CITY may use COUNTY’S evidence room, intoxilyzer machine and all other necessary

facilities located in the Garfield County Jail, at no additional cost to CITY, except that all direct operational expenses of CITY, including, without limitation, telephone expenses, secretarial expense, facsimile expenses and office supplies shall be the sole responsibility of CITY. Similarly, dispatch services shall be provided free of charge to CITY for so long as COUNTY continues to provide dispatch services for its own Sheriff's office, and nothing herein shall bind COUNTY to continue to cover costs of dispatch in the event that COUNTY ever joins other counties or entities in a central, multi-agency dispatch system.

Finally, it is agreed that in the event of termination of this agreement, CITY shall bear no cost or responsibility for the housing of inmates convicted through CITY'S justice court, or through Utah State District Court, as a result of CITY investigations of misdemeanor offenses, for a period of One Hundred Fifty (150) jail days per twelve (12) month period. After the expiration of One Hundred Fifty (150) jail days, CITY shall reimburse COUNTY for all direct costs incurred by COUNTY in housing said inmates. COUNTY shall submit itemized bills to the Panguitch City Manager for such costs and CITY shall then pay COUNTY for all such direct costs.

7. **BINDING EFFECT:** This agreement shall be binding upon and shall inure to the benefit of all the heirs, representatives, successors and assigns of the representative parties hereto. This writing represents the entire agreement between the parties, merging all oral, verbal or prior written representations in dealing with this action.
8. **MODIFICATION OF THIS AGREEMENT:** This agreement may be modified with the consent of the parties hereto. Any such modification must be set forth fully in writing, signed by all parties.
9. **EFFECTIVE AGREEMENT:** Upon proper execution, this agreement constitutes a valid and enforceable contract.
10. **WAIVER:** The waiver by any party to this agreement of a breach of any provision of this agreement shall not be deemed to be a continuing waiver or a waiver of any subsequent breach, whether or the same of any other provision of this agreement.
11. **UTAH LAW TO GOVERN:** This agreement has been drawn and executed in the State of Utah. All questions concerning the meaning and intention of any of its terms or its validity shall be determined in accordance with the laws of the State of Utah.

12. **NUMBER AND GENDER:** The singular shall be interpreted as the plural, and vice versa, if such treatment is necessary to interpret this agreement in accord with the manifest intention of the parties hereto. Likewise, if either the feminine, masculine or neuter gender should be one of the other genders, it shall be so treated.
13. **PARAGRAPH HEADINGS:** The paragraph headings used herein are for convenience only and shall not be considered in the interpretation of this agreement.
14. **PARTIAL VALIDITY:** If any portion of this agreement shall be held invalid or inoperative, then insofar as is reasonable and possible:
- A. The remainder of the agreement shall be considered valid and operative;
 - B. Effect shall be given to the intent manifested by the portion held invalid or inoperative.
15. **INTEGRATION:** All agreements heretofore made in the negotiation and preparation of this agreement between the parties hereto are superseded by and merge into this agreement, no statement or representation not embodied herein shall have any binding effect upon the parties hereto, and there shall be no amendments or modifications hereto except those in writing signed by the parties hereto.

IN WITNESS WHEREOF, the parties have executed this agreement in Panguitch, Garfield County, State of Utah, the day and year first above written.

PANGUITCH CITY:

BY: _____

KIM SOPER, Mayor

GARFIELD COUNTY:

BY: _____

ERIC HOUSTON

Garfield County Sheriff

BY: _____

LELAND POLLOCK

Garfield County Commission



Salt Lake

Signature: _____
Name: Zach Brady
Title: Account Manager
Date: 03/21/2025

Panguitch City

Signature: _____
Name: _____
Date: _____

Quote Information:

Quote # 016468 Version 1



We have prepared a quote for you

Panguitch Social Hall S2 Access Control -Netbox (Single Door)

Quote # 016471 Version 2

Prepared for:

Panguitch City

Prepared by:

Zach Brady

Products

MPN	Product Description	Qty	Price	Ext. Price
S2-EXT-16-WM	S2 NetBox Extreme - 16 Portal Controller, Solid State, Wall Mount Enclosure - S2-EXT-16-WM	1	\$3,095.00	\$3,095.00
FPO75-B100C8D8E4M	Access Power Supply/Charger - 8 Controlled Outputs (fused), 8 Distributed Outputs (fused), B100 Secondary Voltage Module, E4M Enclosure (24" x 20" x 6.5" - FPO75-B100C8D8E4M	1	\$739.00	\$739.00
BT1212	Battery, 12VDC, 12AH - 3.75" x 5.94" x 3.5" (WxLxH) - BT1212	2	\$85.00	\$170.00
DS160	REX - Exit Motion Sensor w/ Sounder, Door Monitor - DS160 (use with optional TP160)	1	\$98.00	\$98.00
TP160	REX - Exit Motion Sensor, Trim Plate, Gray - TP160 (use with DS160)	1	\$2.20	\$2.20
184-12-W	Door Sensor - 1" Recessed, Steel Door Contact, White - 184-12-W	1	\$7.50	\$7.50
9600-630	HES Electric Strike - 9600, Rim Exit (Pullman), 12/24 VDC, Stainless - 9600-630	1	\$386.00	\$386.00
446100	Wire - Access, 4 Elem Comp Cable CMP White Jkt - 1,000' Roll - 446100	0.3	\$1,218.00	\$365.40
40NKS-00-000000	Reader - Signo 40, Switch, Pigtail, Standard Profile (Mobile, SEOS, iClass /SE/SR, Prox), Black Body w/ Silver Trim - 40NKS-00-000000	1	\$327.00	\$327.00
2000PGGMH / H10302	Credential - iClass Smart Card (2kb memory,2 ap.), ThinCard, 37 Bit, Non Duplicated, Printed #, White, Horizontal Slot - 2000PGGMH / H10302	100	\$4.98	\$498.00
Conduit 10'	Conduit - 10' Length with Accessories - Conduit 10'	4	\$40.00	\$160.00
Hardware - AC Misc	Misc. Hardware - Access Control, per device - Hardware - AC Misc	1	\$25.00	\$25.00
Labor	Installation, Configuration, Cabling & Conduit	1	\$5,100.00	\$5,100.00

Subtotal: **\$10,973.10**

Estimated Tax: **\$437.55**

Statement of Work

Deliverable

Stone Security will cable and install access control at the front door at the Panguitch Social Hall. Stone will install headend hardware in the southeast storage closet above one of the shelves. Stone will run conduit from the front door to the storage closet Stone will train staff on the use of the system.

Exclusions

- Quote excludes lift work and assumes any lift work required may be added as a change order
- Quote assumes all doors are in proper working order. Any adjustments to the doors that need to be made for

normal opening and closing functionality to take place will not be covered by Stone Security.

- Quote assumes that all doors being added to the access control system have the proper hardware to allow for locking to take place. If door handles need to be upgraded this will not be covered by Stone Security.
- Quote excludes any removal of existing access control equipment or existing cabling, raceway, or conduit unless specifically outlined in the scope of work and proposal.
- Quote excludes permitting fees and bid bonds.
- Quote excludes fire drop for maglocks. Fire drop must be provided by others.
- Quote excludes ADA door operators and buttons - by door hardware contractor.
- Quote excludes 3D CAD shop drawings
- Any shop drawings required other than what was received for quote will be performed through a Change Order for the additional labor required to create the CAD files.
- Please expect an Invoice for equipment after an approved quote is signed and a final invoice once the project is completed.



Panguitch Social Hall S2 Access Control -Netbox (Single Door)

Prepared by:

Salt Lake

Zach Brady
+18014008934
Zach.Brady@stonesecurity.net

Ship To:

Panguitch City

25 S 200 E
Panguitch, UT 84759
Mat Houston
mat.panguitchcity@gmail.com

Bill To:

Panguitch City

25 S 200 E
Panguitch, UT 84759
Mat Houston
mat.panguitchcity@gmail.com

Quote Information:

Quote #: 016471

Version: 2
Delivery Date: 03/21/2025
Expiration Date: 04/20/2025
Net 30

Quote Summary

Description	Amount
Products	\$10,973.10
	Subtotal: \$10,973.10
	Estimated Tax: \$437.55
	Total: \$11,410.65

Pricing:

Payment of all applicable state and local taxes are the responsibility of the customer. Please verify that all taxes are correct based on your organization and notify Stone Security if any changes are needed.

Quotes and pricing terms are negotiated between Customer and Stone Security and may be unique to the Customer. Therefore, and except as otherwise provided by law, Customer hereby agrees to keep the pricing arrangement confidential for a period of no less than three (3) years from the date of the signed quote. Customer will not use this confidential information in furtherance of its business, or the business of anyone else, whether or not in competition with Stone Security.

Credit Card payments are subject to a 3% processing fee.

Return Policy:

Purchases are subject to a 30 day return policy on products which are unopened and in new condition. Returns may be subject to a restocking fee depending on manufacturer restrictions. Custom products and open boxes are nonreturnable.

Support:

Systems not covered by a Support Agreement will be billed time and materials.

Warranty:

Stone Security warrants all labor and materials installed at the job site for 90 days from the installation date, excluding normal wear and tear or product abuse. A representative will assess any damage caused by Stone Security. If found to be due to faulty workmanship or materials, Stone Security will repair or replace the defective material at no cost.

Acceptance:

By signing below, you agree to the Pricing, Deliverables, Return Policy and Support of this Quote and are duly authorized to sign on behalf of the Company. Please note that all materials will be invoiced upon quote acceptance or receipt of Purchase Order.



Salt Lake

Signature: _____
Name: Zach Brady
Title: Estimator
Date: 03/21/2025

Panguitch City

Signature: _____
Name: _____
Date: _____

Quote Information:

Quote # 016471 Version 2



P.O. Box 177, Panguitch, UT 84759 435-676-8847 www.panguitchcity.org

PANGUITCH CITY PROJECT APPROVAL

Name & address of property owner: Garfield County School District- Panguitch Elementary School

235 West 100 South
Panguitch, UT 84759

Phone Number: 435-676-8847 PES 435-690-1228 Brittney Feller

Email Address: brittneynay@gmail.com

Project address: 235 West 100 South, Panguitch, UT 84759

Proposed project: School Marquee Sign

PERMIT

- This project requires a building permit from Garfield County for the project listed above.
 This project does not require a building permit from Garfield County.

CONNECTION AND IMPACT FEES

- \$2100 ¾ Inch, \$2700 1 inch, or \$5200 2 inch Water Connection Fee (Circle fee that applies)
 \$1000 Water Impact Fee
 \$2000 Sewer Connection Fee
 \$1000 Sewer Impact Fee
 \$100 Meter Setting Fee

FEE TOTAL \$ _____

OWNER BUILDER

- This project requires an owner builder form.
 This project does not require an owner builder form.

CULINARY WATER

- We have available culinary water for this project.
 This project does not require culinary water.

WASTEWATER

- We have the capacity for our wastewater system to serve this project.
 This project does not require a connection to our wastewater system.

ELECTRICAL

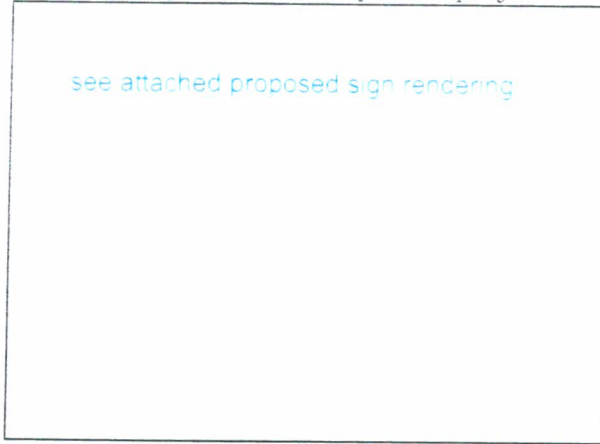
- This project requires electricity. *We have an electrical connection already in the park strip where the sign will be located.*
 This project does not require electricity.

*Front, side, and rear yard setbacks are required per the Panguitch City zoning ordinance. The owner of said property or his authorized agent shall be responsible for seeing that these requirements are met, and that no construction takes place in these areas.

Zoning district _____ set back requirements:

Front	Rear	Sides

Please draw a simple diagram of the requested project.



****Street/front of property****

*All structures built within Panguitch City limits shall meet the minimum setback requirements including non-permitted projects. Further ordinance information is available on request. If you have any questions please call the city office at 676-8585. Thank you.

The above project will meet the requirements for water and sewer.

Public Works: _____

The above project meets the requirements for fire protection.

Fire Chief: _____

Approval - given this _____ day of _____, _____

By: _____

*****THIS SIGNED FORM MUST BE TAKEN TO THE GARFIELD COUNTY BUILDING DEPARTMENT FOR PERMIT.**

APPLICANT - I understand the zoning requirements.

SIGNATURE: _____ Date: _____

Comments: _____

OPTION 1

SCOPE OF WORK
 SIGNAGE FOR: PANGUTCH ELEMENTARY SCHOOL
 4679 SOUTH RIVER ROAD
 ST. GEORGE, UT 84790



**PERMITTING SIGN AREA - 40 IN FT² -
 FINAL ELECTRICAL CONNECTION -
 US LUMBER TO PROVIDE POWER TO
 SIGN (LOCATION TO BE DETERMINED)**

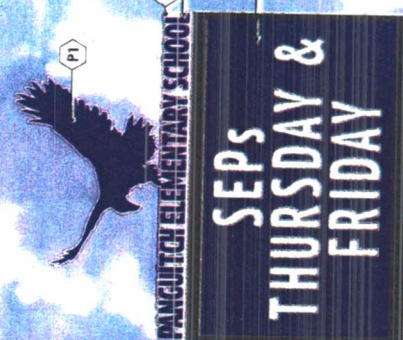
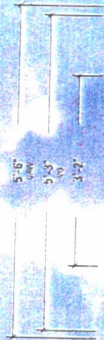
COLOR KEY

- P1 - FCU Blk
- P2 - White

Note: Unless otherwise noted, the colors depicted including any and all actual colors on location are to be used for color calibration and final approval. Colors are subject to approval by color calibration.

MISSING REQUIRED INFO

1. Final sign design and layout to be submitted for review and approval by the school district and the local health department. The sign design and layout must be submitted to the local health department for review and approval. The sign design and layout must be submitted to the local health department for review and approval. The sign design and layout must be submitted to the local health department for review and approval.

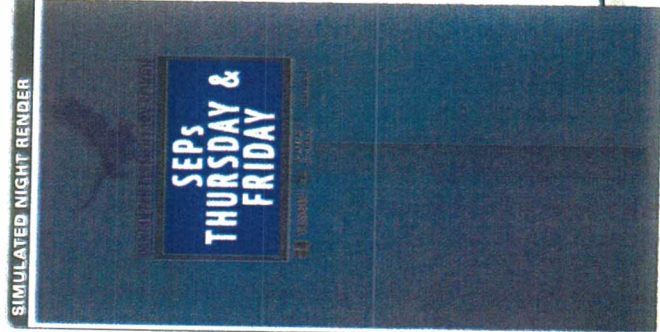


FCU Aluminum Letters
 with-antifungal (base color: soft K) White
 Tray-Lite, Beek of Exterior Painted White
 For Contrast,
 DIF-20mm EMC

FCU Sponsor Panels
 painted FCU

MISSING REQUIRED INFO

1. Final sign design and layout to be submitted for review and approval by the school district and the local health department. The sign design and layout must be submitted to the local health department for review and approval. The sign design and layout must be submitted to the local health department for review and approval.



SIMULATED NIGHT RENDER

1 SIGN UT - NEW EMC POLE SIGN
 SCALE: 1/2" = 1'-0"

This design does not constitute production ready artwork and is for the client's use only for providing and receiving proposals only.

DESIGN

4679 South River Road
 St. George, UT 84790
 435.628.0350

www.yesco.com

This document is subject to change without notice. The design and layout of this sign is the property of YESCO. Permission to copy or reproduce this document may only be obtained through a written agreement with YESCO. The colors shown are only approximate and the actual colors may vary slightly in color from your computer monitor or print.

This sign is installed in an outdoor setting with the sign face exposed to the elements. The sign is made of US Lumber to provide power to the sign. This includes power, grounding and bonding at the sign.



Revisions

Rev. 01/24/2025
 09/10/24/2025 (1)

JO #

Approval

Client: YESCO

Client: YESCO

Pangutch Elementary

235 W 100 S
 Pangutch, UT 84790
 Area: YESCO Blue Team
 Designer: Yes Team

OPY-70033 R1

ART 2.0



Sign to be located here in this park strip



Sign to be located here in this park strip

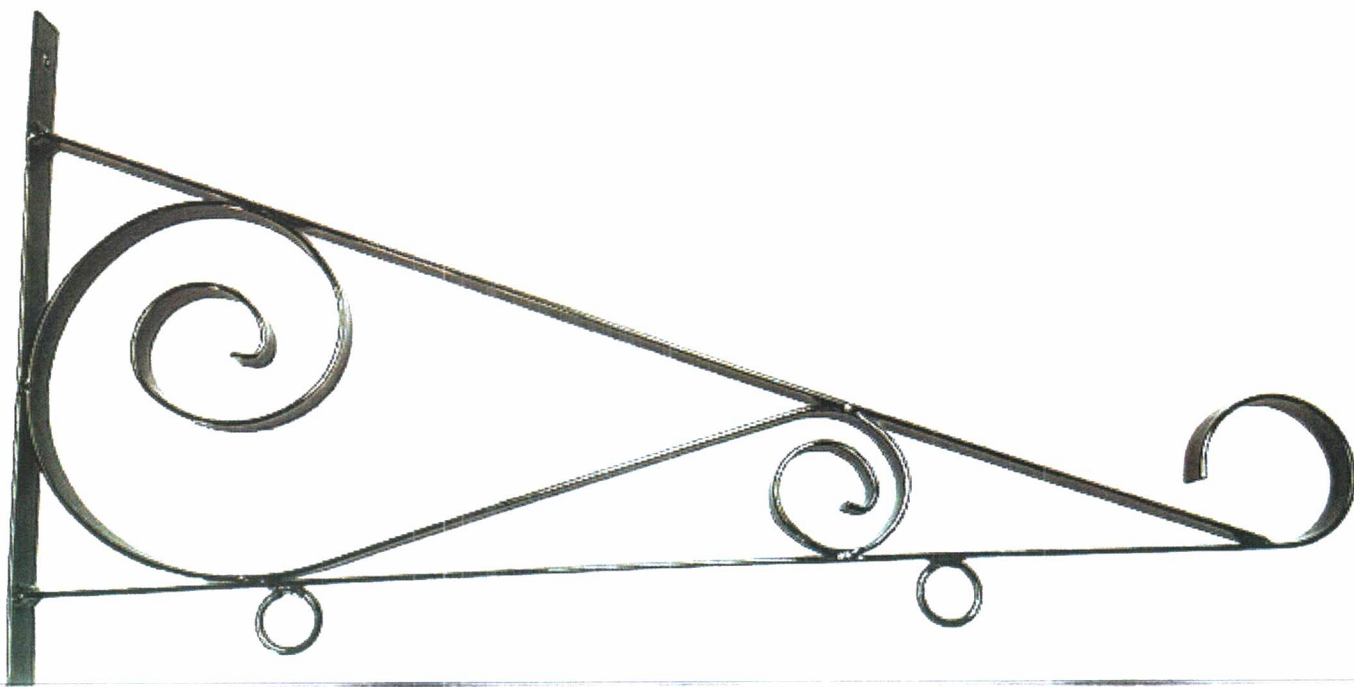


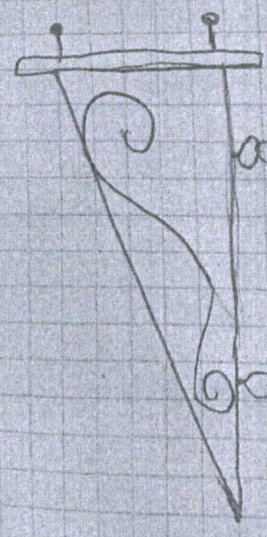
24x24 aluminum

OLIVIA'S GIFTS



GIFTS-SWEETS-SOUVENIRS



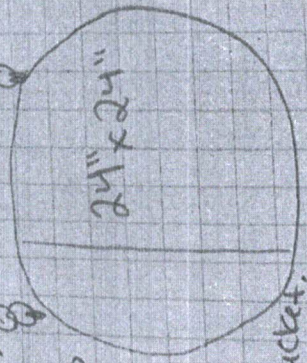


Tap Con Screws

to mount bracket to brick face of the building's south portion of its East face.

(N)

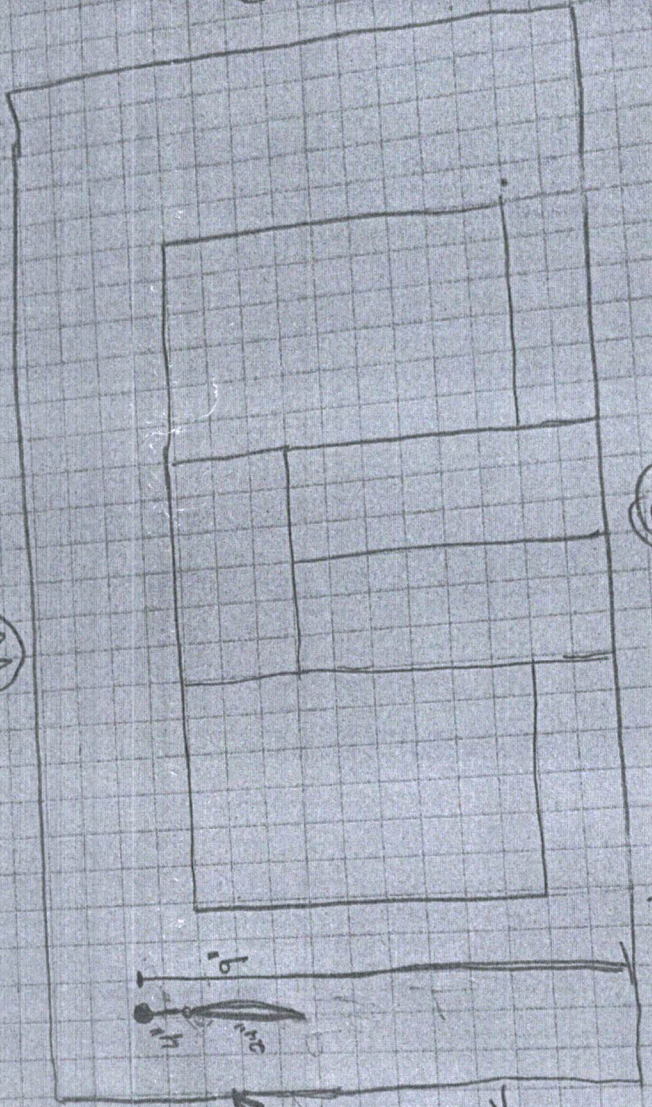
4" screws to hook sign to bracket.



Bottom of mounting bracket

to be attached 9" above the sidewalk

Very bottom of the sign will be approx 8" off of the sidewalk



(N)

(E)

sign centered between corner of building & window.



PANGUITCH CITY BUSINESS LICENSE APPLICATION

25 South 200 East, PO Box 75, Panguitch Utah 84759, Phone: 435-676-8585,
Email tyrissa.howell@panguitch.com

A Change of Pace

Date: 3-26-25

Name of Business Olivia's Gifts DBA: Olivia's Gifts
 Type of Business Gift Shop
 Business Address 85 N Main Street City Panguitch State UT Zip 84759
 Mailing Address 350 W 500 N Ste City Monticello State UT Zip 84754
 State Sales Tax # 16212955-103 Health Inspection Permit # N/A Contractor License # N/A
 Business Email @gmail.com Business Phone # _____
 Name of Business Owner (if partnership, list all partners; if corporation, list principal officers)
Heather Gilbert
 Owner Address 350 W 500 N City Monticello State UT Zip 84754
 Phone # (435) _____ Email Address 5@gmail.com
 Name of Manager Heather Gilbert Manager Phone # (435) _____

LICENSE FEES

- General Business License Fee - \$25.00
- Conditional Use Permit (one-time only fee) \$25.00
- Beer Permit - \$50.00
- Vendor Permits -
 - Up to 30 days - \$20.00
 - Yearly - \$25.00

Total amount due - \$ 50 25.00

NEW APPLICATIONS - This is an application for a business license; the actual license will be issued only when the completed application is received, reviewed, and approved by the city council. All information must be accurately completed, or the issuance of the license will be delayed. Issuance of the license shall in no way relieve the applicable zoning, health, building, and fire regulations. All state and Federal regulations must be complied with.

RENEWAL APPLICATIONS - Renewal forms are sent out at the first of every year. If you did not receive one, please contact Tyrissa at the Panguitch City Office. **Late Fee** - Late fees are applied if renewals are not completed by February 1st of each year.

HOME OCCUPATIONS - Home occupations require a conditional use permit.

SHORT-TERM RENTALS - A conditional use permit and a building inspection are required. Please request a STR packet.

HEALTH PERMIT REQUIRED - For all FOOD ESTABLISHMENTS, FOOD TRUCKS, TANNING BEDS, BODY ART, AND SWIMMING POOLS.

I, We, Heather Gilbert hereby agree to conduct said business strictly in accordance with the Laws and Ordinances covering such business, and understand that it is unlawful to make any false statement, declaration, or report as required in this application.

Date 3-26-25 Signed by [Signature]

FOR OFFICIAL USE ONLY -

Health Permit Approval _____

Total Paid \$ [Signature]



PANGUITCH CITY BUSINESS LICENSE APPLICATION

25 South 200 East, PO Box 75, Panguitch Utah 84759, Phone: 435-676-8585,
Email tyrissa.howell@panguitch.com

A Change of Pace

Date: 3/10/25

Name of Business 3 PEAKS PANTRY LLC DBA: _____
 Type of Business FREEZE DRY GOODS
 Business Address 290 W 400 S City PANGUITCH State UT Zip 84759
 Mailing Address P.O. BOX City PANGUITCH State UT Zip 84759
 State Sales Tax # 16136341-002-5TC Contractor License # _____
 Business Email _____@GMAIL.COM Business Phone # _____
 Name of Business Owner (if partnership, list all partners; if corporation, list principal officers)
ANDREW M. GARCIA, MARTIN GARCIA
 Address 290 W 400 S City PANGUITCH State UT Zip 84759
 Phone # _____ Email Address _____@GMAIL.COM
 Name of Manager MARTIN GARCIA Manager Phone # _____

LICENSE FEES (Circle all that apply to your business)

General Business License Fee - \$25.00
 Conditional Use Permit (one time only fee) \$25.00
 Beer Permit - \$50.00
 Vendor Permits -
 Up to 30 days - \$20.00
 Yearly - \$25.00
 Total amount due - \$ 75.00 ~~50.00~~

NEW APPLICATIONS - This is an application for a business license; the actual license will be issued only when the completed application is received, reviewed, and approved by the city council. All information must be accurately completed, or the issuance of the license will be delayed. Issuance of the license shall in no way relieve the applicable zoning, health, building, and fire regulations. All state and Federal regulations must be complied with.

RENEWAL APPLICATIONS - Renewal forms are sent out the first of every year. If you did not receive one, please contact Tyrissa at the Panguitch City Office. **Late Fee** - \$10.00 (If paid after February first of each said year.)

HOME OCCUPATIONS - Home occupations require a conditional use permit.

SHORT TERM RENTALS - Require and conditional user permit and a building inspection. Please request a STR packet.

FOOD ESTABLISHMENTS AND FOOD TRUCKS - Require proof of a completed health inspection

I, We, MARTIN GARCIA hereby agree to conduct said business strictly in accordance with the Laws and Ordinances covering such business, and understand that it is unlawful to make any false statement, declaration, or report as required in this application.

Date 3/10/2025 Signed by Martin Garcia

FOR OFFICIAL USE ONLY

Approved _____ License # _____ Receipt # _____ Total Paid \$ 50.00 pd cash



PANGUITCH CITY BUSINESS LICENSE APPLICATION

25 South 200 East, PO Box 75, Panguitch Utah 84759, Phone: 435-676-8585,
Email tyryssa.howell@panguitch.com

A Change of Pace

Date: 4/1/25

Name of Business Brews N Doubloons LLC DBA: _____
 Type of Business mobile coffee trailer
 Business Address 925 S 190 E City Panguitch State UT Zip 84759
 Mailing Address PO Box City Panguitch State UT Zip 84759
 State Sales Tax # 11U43455-003-512 Health Inspection Permit # _____ Contractor License # N/A
 Business Email @gmail.com Business Phone # _____
 Name of Business Owner (if partnership, list all partners; if corporation, list principal officers)
Cheryl Berry
 Owner Address 225 S 190 E City Panguitch State UT Zip 84759
 Phone # _____ Email Address 11.COM
 Name of Manager same as owner Manager Phone # _____

LICENSE FEES

- General Business License Fee - \$25.00
- Conditional Use Permit (one-time only fee) \$25.00
- Beer Permit - \$50.00
- Vendor Permits -
 - Up to 30 days - \$20.00
 - Yearly - \$25.00

Total amount due - \$ _____

NEW APPLICATIONS - This is an application for a business license; the actual license will be issued only when the completed application is received, reviewed, and approved by the city council. All information must be accurately completed, or the issuance of the license will be delayed. Issuance of the license shall in no way relieve the applicable zoning, health, building, and fire regulations. All state and Federal regulations must be complied with.

RENEWAL APPLICATIONS - Renewal forms are sent out at the first of every year. If you did not receive one, please contact Tyryssa at the Panguitch City Office. **Late Fee** - Late fees are applied if renewals are not completed by February 1st of each year.

HOME OCCUPATIONS - Home occupations require a conditional use permit.

SHORT-TERM RENTALS - A conditional use permit and a building inspection are required. Please request a STR packet.

HEALTH PERMIT REQUIRED - For all **FOOD ESTABLISHMENTS, FOOD TRUCKS, TANNING BEDS, BODY ART, AND SWIMMING POOLS.**

I, We, Cheryl Berry hereby agree to conduct said business strictly in accordance with the Laws and Ordinances covering such business, and understand that it is unlawful to make any false statement, declaration, or report as required in this application.

Date 4/1/25 Signed by Cheryl Berry

FOR OFFICIAL USE ONLY -

Health Permit Approval 337231 Total Paid \$ 25.00 pd CC