

# Salt Lake County Household Hazardous Waste



# Environmental Health

- ▶ Salt Lake County
  - ▶ Health Department
    - ▶ Environmental Health
      - ▶ Air Quality
      - ▶ Food Protection
      - ▶ Sanitation and Safety
      - ▶ Water Quality Bureau





# What is household hazardous waste?

- ▶ The Environmental Protection Agency defines it as corrosive, toxic, or flammable products that can react or explode when mixed with other substances.
- ▶ The goal of the program is to reduce the amount of household hazardous waste (HHW) in homes and the environment.

# What is not HHW?



- ▶ Dried latex paint
- ▶ Empty containers
- ▶ Alkaline batteries
- ▶ Paper, Plastic, Glass, Metal

Why?

# New Jersey village told to prepare for evacuation as EPA deals with mystery chemicals

By Rich Calder

April 22, 2023 | 8:46pm | Updated



- ▶ Soil
- ▶ Water
- ▶ Air
  - ▶ Incinerate
  - ▶ Adverse health outcomes for humans, and animals



# Operations - Facilities

## Facilities

- ▶ One full-time at the Salt Lake Valley Landfill
- ▶ Partnership at the Trans-Jordan Landfill
- ▶ Murray ABOP (has been discontinued)
- ▶ Sandy HHW (opened July 2024)

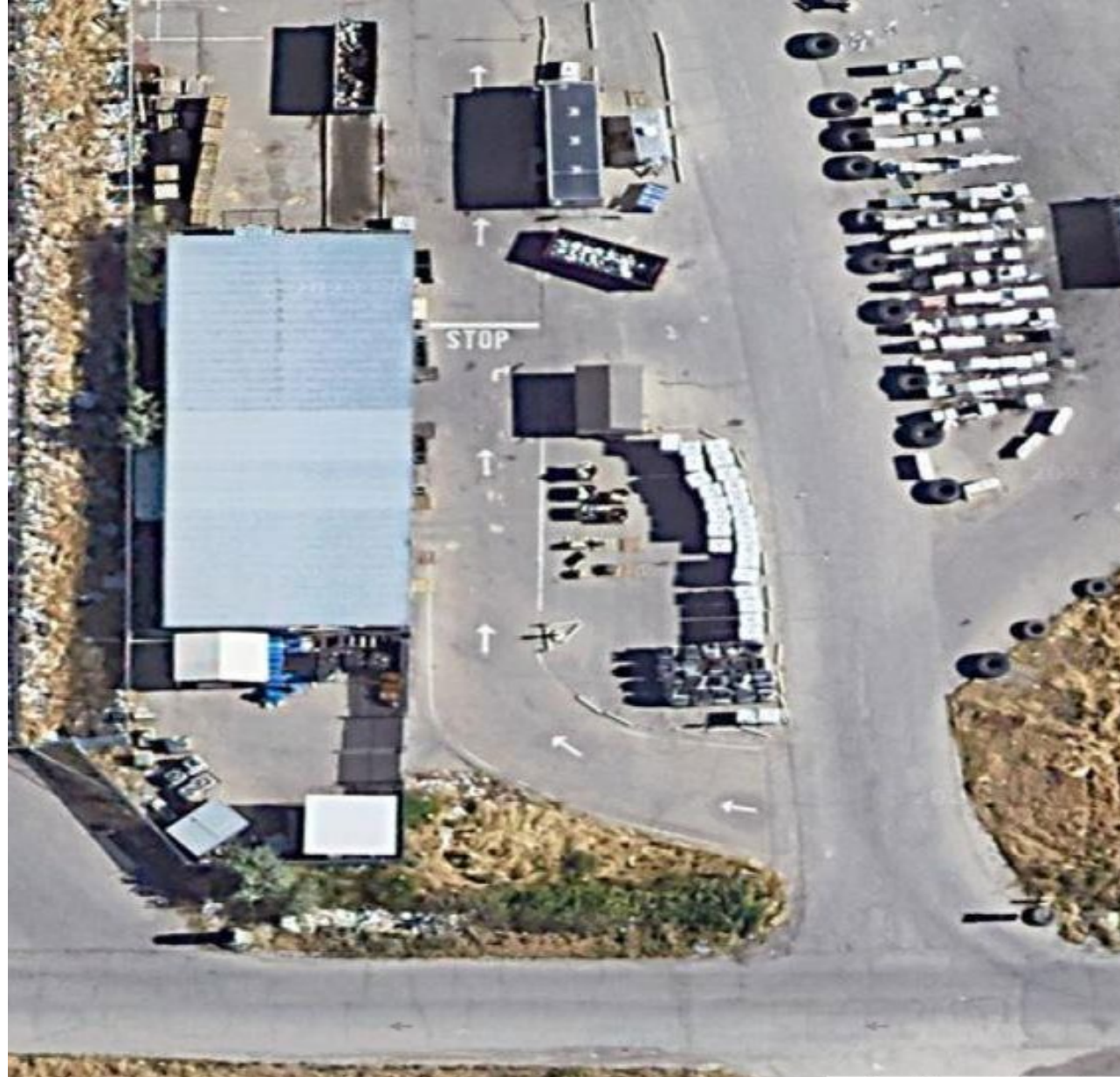


# HHW SLV Facility

Top is north

Scale house to  
the east.

PCC to the West





# Trans-Jordan landfill

- ▶ Interlocal Govt Entity owned by 7 cities
- ▶ They supply the labor
- ▶ We supply materials and pay for disposal costs
- ▶ They subtract their costs from tonnage fees
- ▶ E- waste





# Sandy HHW

- ▶ Location is approximately 9000 s and 700 W in Sandy
  - ▶ By Sandy Public Works
- ▶ Groundbreaking March 2023
- ▶ Opened July 2024
- ▶ Storage issues
  - ▶ Middle of city







# Operations - Staff

- ▶ Staff
  - ▶ Supervisor
    - ▶ Jose
  - ▶ One chemist
    - ▶ Ed
  - ▶ Five technicians
    - ▶ Aaron, Chris, David, Scott, Maeve
  - ▶ Occasional temporary employees
    - ▶ Brooklyn
    - ▶ Two more to be staffed for summer season

# Unusual Waste

- ▶ Specimens in bottles
- ▶ C4
- ▶ Sodium
- ▶ Old Lab Chemicals
- ▶ Antique Thermometers and Fire Extinguishers
- ▶ Homemade Gadgets
- ▶ Mystery Bottles





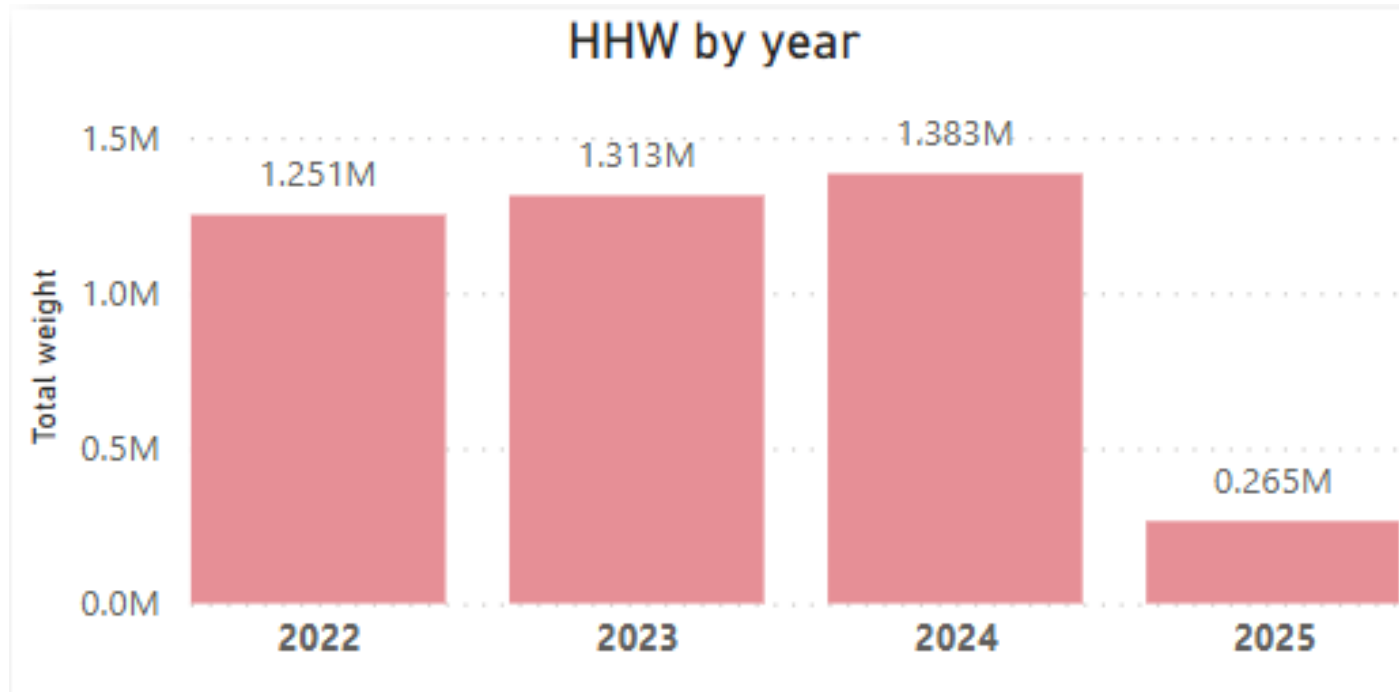
# Disposal amounts in 2023 and 2022

## 2023

- ▶ 772,000 pounds of paint
- ▶ 17,238 pounds of lab pack chemicals
- ▶ 70,900 pounds of used oil
- ▶ 36,108 pounds of antifreeze
- ▶ 132,880 pounds of fuel
- ▶ 59,012 pounds of fertilizer, herbicides, and pesticides
- ▶ 44,507 pounds of aerosols
- ▶ 56,205 pounds of t-Ox chemicals
- ▶ 118,339 pounds of electronics
- ▶ 3,633 pounds of florescent light bulbs

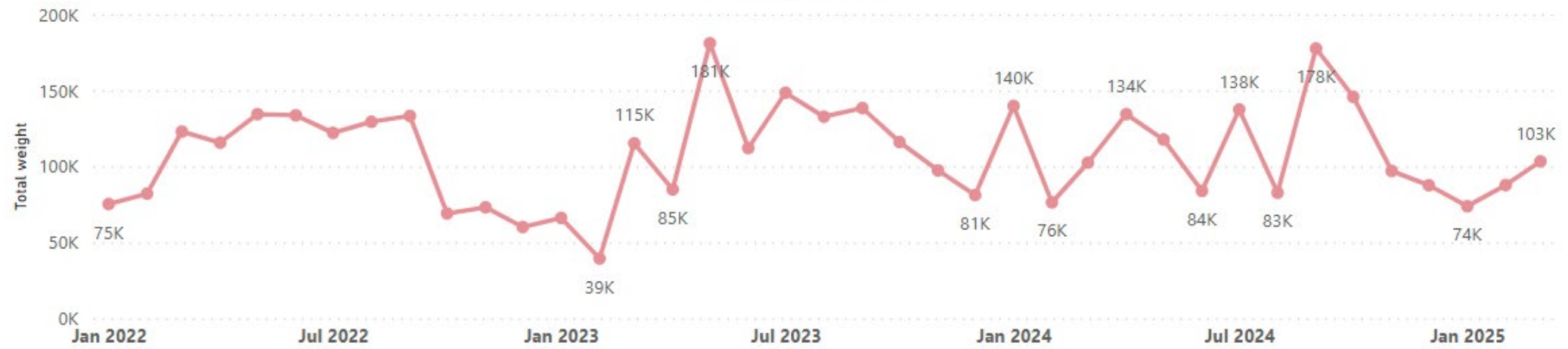
## 2024

- ▶ 779,037 pounds of paint
- ▶ 25,492 pounds of lab pack chemicals
- ▶ 60,309 pounds of used oil
- ▶ 43,841 pounds of antifreeze
- ▶ 104,501 pounds of fuel
- ▶ 60,935 pounds of fertilizer, herbicides, and pesticides
- ▶ 38,200 pounds of aerosols
- ▶ 94,926 pounds of t-Ox chemicals
- ▶ 315,850 pounds of electronics
- ▶ 5,838 pounds of florescent light bulbs



# History

HHW by month





# Disposal reduction

- ▶ Re-use shed
  - ▶ (Most surprising)
- ▶ This year kept the Re-use shed at SLV open for Winter season
- ▶ Please come take a look to see what we have!



# Community Partners



Roughly 140,000 Pounds of material diverted to reuse shed for community

# What do we do with waste?

- ▶ Clean Harbors
  - ▶ Aragonite incinerator
  - ▶ Clive
  - ▶ Other facilities throughout the country
- ▶ Rock Canyon Oil
  - ▶ Oil
  - ▶ Anti-freeze
- ▶ Battery Solutions
- ▶ METech
  - ▶ Electronics
- ▶ Prepaid boxes for light bulbs
- ▶ Veolia



# Challenges

## Expensive

- One propane tank costs \$96 dollars to dispose.

## No great outlet

- Propane
- Electronics

As fuel and labor prices increase, our disposal company increases prices

Success has consequences

# Overall challenges

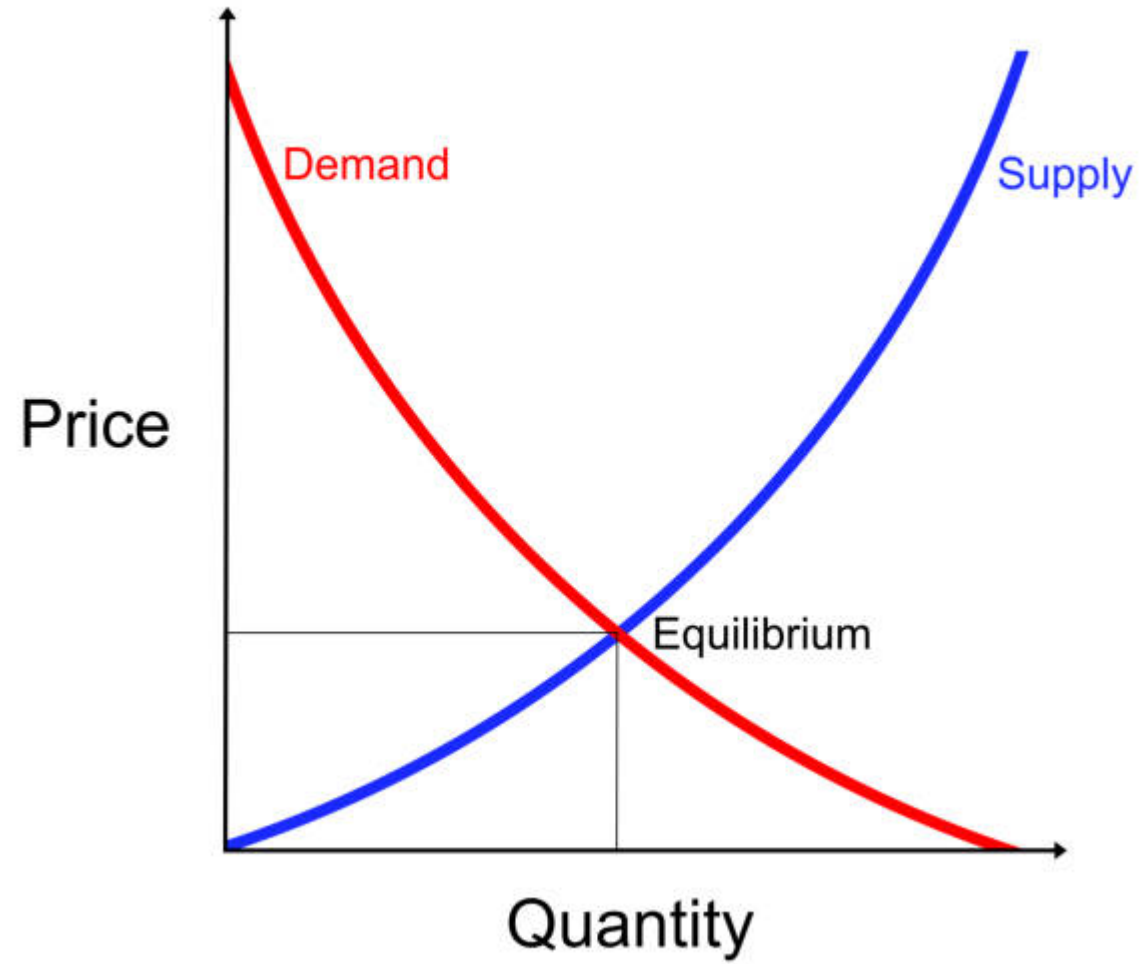
- ▶ Business waste VS Residential waste
  - ▶ Service is free for residents of Salt Lake County
  - ▶ How do we determine if it's business or residential?
    - ▶ What happens to the waste if we reject a load?



Sep 4, 2022 at 11:31  
332 N Oak  
Salt Lake City UT  
United States

# Unknowns

- ▶ Demand
- ▶ Operating costs
- ▶ Staffing
- ▶ Maintaining relationships
- ▶ with existing partners
  - ▶ Tonnage fees





# Take aways



**Proper Disposal Protects Health  
and the Environment**



**Many Common Items Are  
Hazardous**



**Participation Prevents Pollution  
It's Easy to Participate**

Questions?

