

# MOAB UMTRA PROJECT

## URANIUM MILL TAILINGS REMEDIAL ACTION

### MOAB, UTAH



*Panoramic view of Moab UMTRA Site (January 2025)*



Prepared by:

**Jessica Thacker**

UMTRA Liaison/Technical Inspector

**MTPSC Status Update**

**04.22.2025**

# INTRODUCTION & PURPOSE

The UMTRA Liaison/Technical Inspector position, as established by Grand County Resolution 3198 and located within the Grand County Planning and Zoning (P&Z) serves as an independent and neutral figure regarding activities utilizing a conditional use permit (CUP) through Grand County.

The UMTRA Liaison/Technical Inspector provides observations, reports, and other applicable duties to the following sites:

- The Moab UMTRA Site and associated Crescent Junction Disposal Site
- Oilfield Water Logistics at Danish Flats (*company defunct*)
- IACX Helium Processing Plant at Harley Dome

The UMTRA Liaison/Technical Inspector works with a variety of entities and committees to ensure full transparency and accurate reporting. This position is currently funded through Grant DE-EM0005196 and has a period of performance through February 4, 2026.

# UMTRA SITE MAP



Google Maps – Image not to scale

## OBSERVATION POINT #1



## OBSERVATION POINT #2

JAN 2025

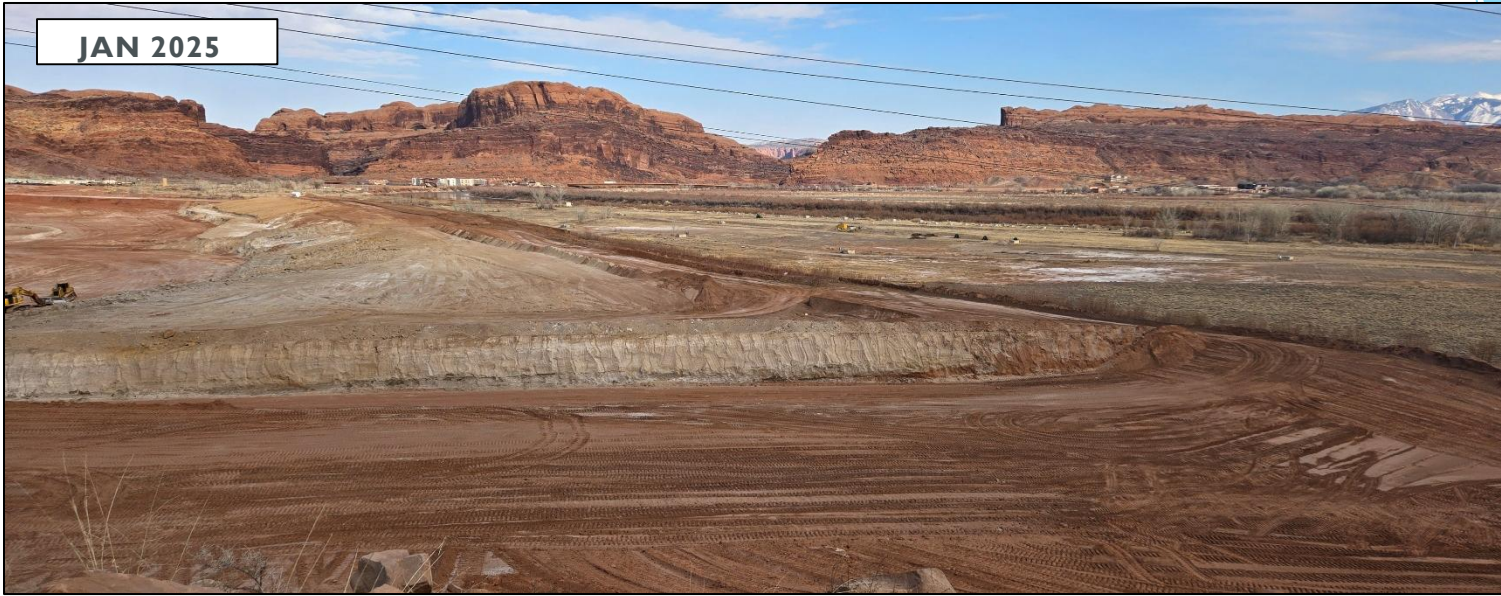


MARCH 2025



## OBSERVATION POINT #4

JAN 2025



MARCH 2025

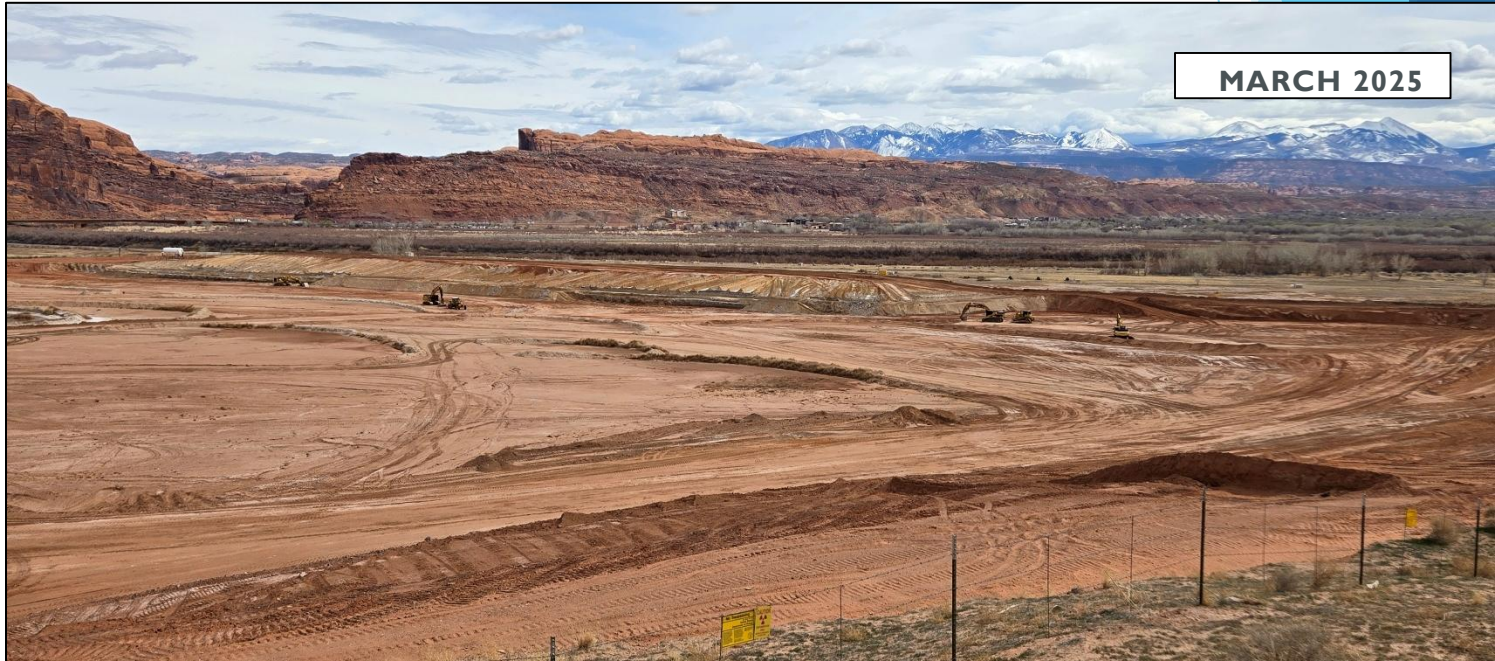


## OBSERVATION POINT #5

JAN 2025



MARCH 2025



## OBSERVATION POINT #6

JAN 2025

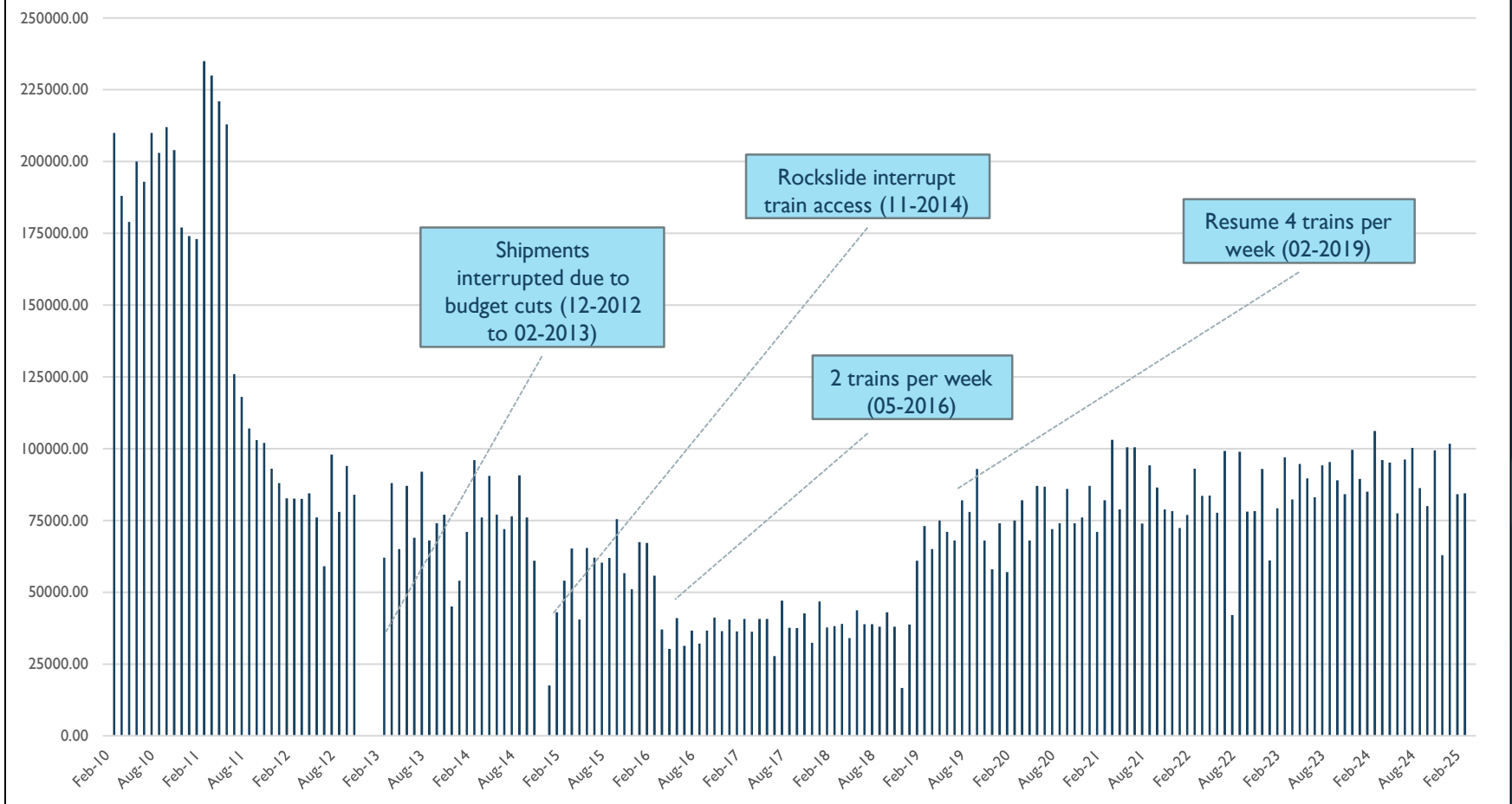


MARCH 2025



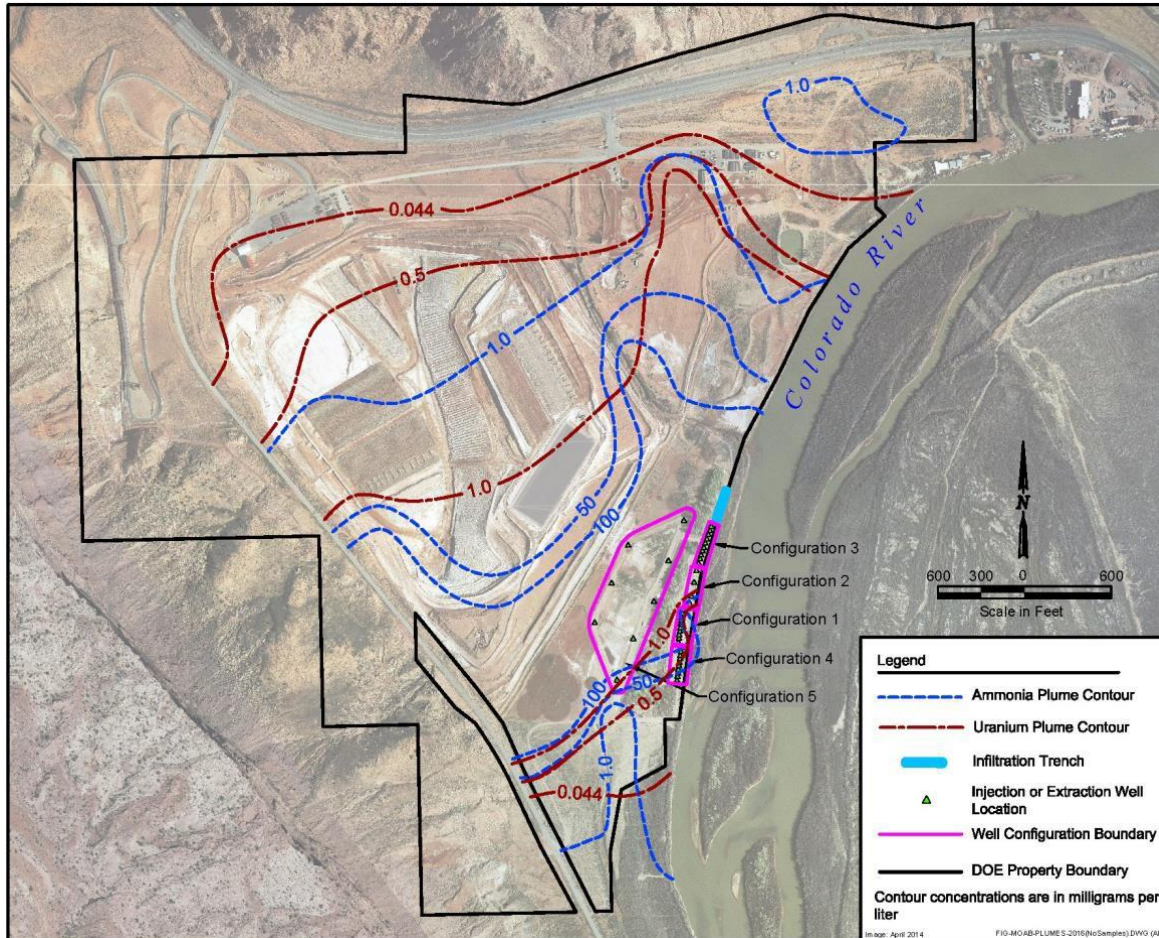
# TAILINGS SUMMARY - OVERALL

Tailings moved (in tons) from March 2010 - March 2025



- At the end of March 2025, approximately 15.4 million tons of tailings and mill debris has been shipped to the Crescent Junction site for disposal. Approximately 84,415 tons of tailings and mill debris were moved in March 2025 (end of 1Q25).
- Indicates that 96.3% of the estimated 16 million total tonnage contained at the Moab UMTRA site has been removed since the beginning of the project.
- The Moab UMTRA Project continues to operate on a regular schedule of four (4) trains per week.

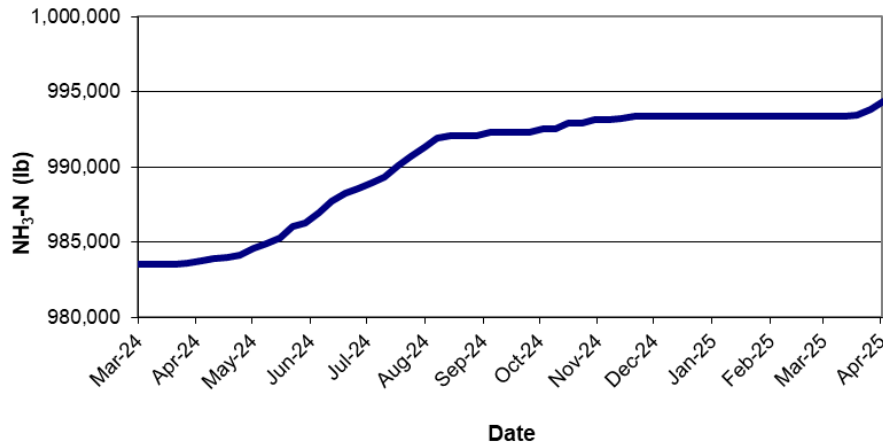
# GROUNDWATER REMEDIATION



- In 2003, DOE implemented an interim action system at the Moab site to address concerns regarding elevated ammonia and uranium concentrations in groundwater discharging to the Colorado River. A total of five well configurations are used to reduce the amount of ammonia and uranium that discharges to the river.
- Groundwater extraction is through Configuration 5 wells, which are located closer to the tailings pile.

# GROUNDWATER REMEDIATION

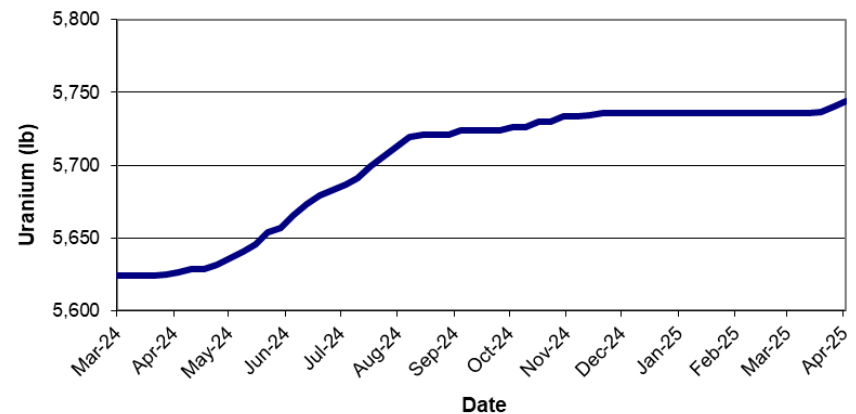
Interim Action Groundwater System  
Cumulative Mass of Ammonia Extracted



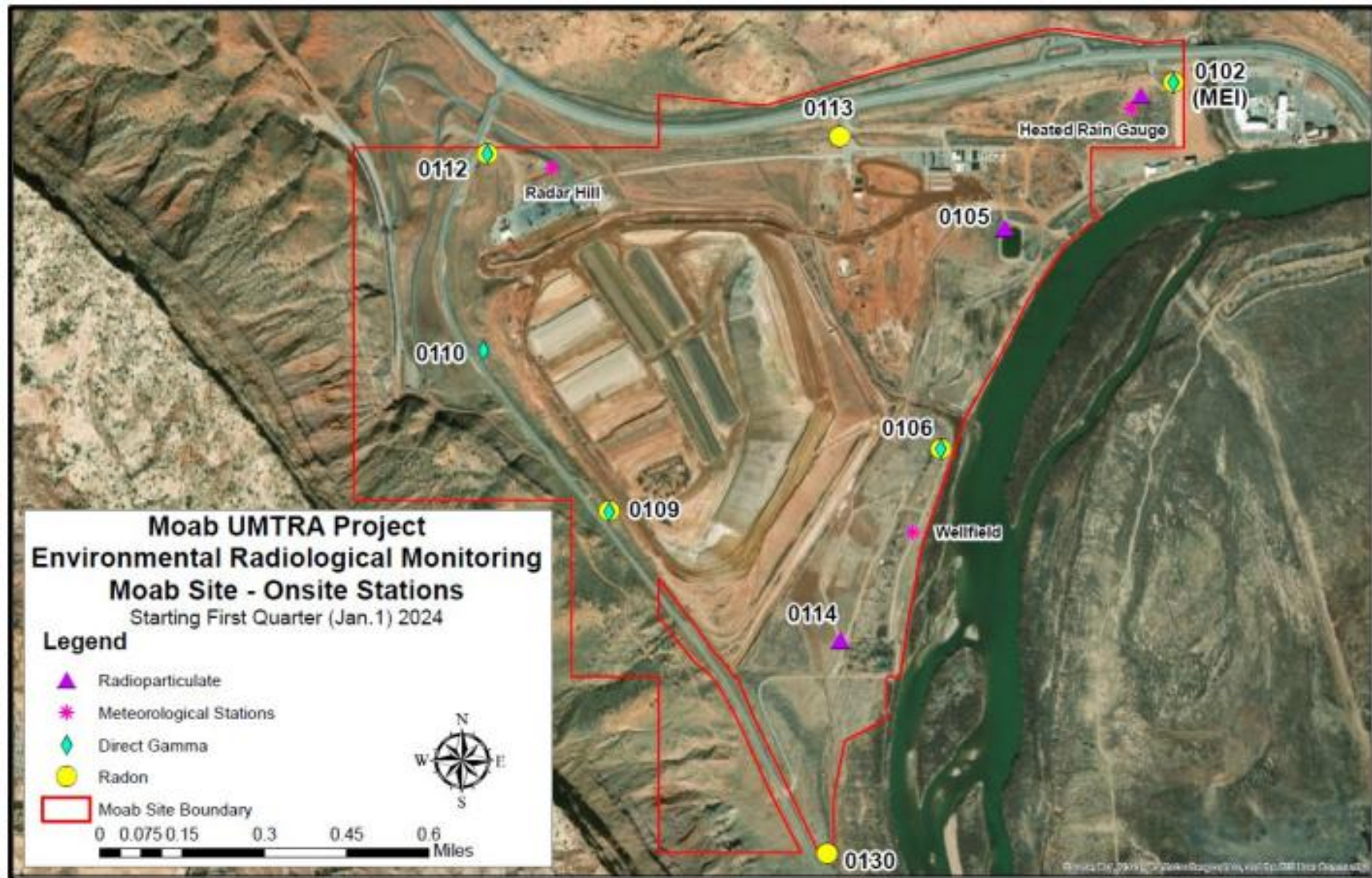
Over the life of the Project, extraction has prevented 994,324 pounds of ammonia and 5,744 pounds of uranium from reaching the river.

Freshwater (diverted river water) is injected through wells in Configuration 4 as an additional way of minimizing the discharge of ammonia to the Colorado River. So far in 2025, more than 2.3 million gallons of water has been injected.

Interim Action Groundwater System  
Cumulative Mass of Uranium Extracted



# AIR MONITORING MAPS - MOAB SITE



**Moab UMTRA Project  
Environmental Radiological Monitoring  
Crescent Junction Site**  
Starting First Quarter (Jan. 1) 2024

**Legend**

- Radon
- Direct Gamma
- Radioparticulate
- Meteorological Station
- Site Boundary
- Property Boundary

0 0.25 0.5 1 1.5 2 Miles

# AIR MONITORING & GROUNDWATER REMEDIATION DATA SUMMARY 2Q24 VS. 3Q24

Ammonia Extraction (in lbs)	APR-24	MAY-24	JUNE-24	JULY-24	AUG-24	SEPT-24	OCT-24	NOV-24	DEC-24	JAN-25	FEB-25	MAR-25
	984568	984568	988591	991299	992070	992522	993177	993397	993397	993397	993397	994324
Difference (in lbs)	984568	0	4023	2708	771	452	655	220	0	0	0	927

Uranium Extraction (in lbs)	APR-24	MAY-24	JUNE-24	JULY-24	AUG-24	SEPT-24	OCT-24	NOV-24	DEC-24	JAN-25	FEB-25	MAR-25
	5636	5636	5683	5713	5721	5726	5733	5736	5736	5736	5736	5744
Difference (in lbs)	5636	0	47	30	8	5	7	3	0	0	0	8

Moab Site - Radioparticulates (mrem)			
Station No.	2Q24	3Q24	Diff
0102 (MEI)	0.2	0.31	0.11
0105	0.46	0.45	-0.01
0114	0.56	0.7	0.14
0117	0.17	0.08	-0.09
0118	0.41	0.33	-0.08
0119	0.24	0.25	0.01
0122	0.17	0.11	-0.06
0123	0.16	0.28	0.12
0129	0.98	0.61	-0.37

Moab Site - Radon (pCi/L)			
Station No.	2Q24	3Q24	Diff
0102 (MEI)	0.59	0.73	0.14
0130	0.89	0.97	0.08
0109	1.1	1.1	0
0112	0.81	1.2	0.39
0113	0.76	1.2	0.44
0106	1.4	1.4	0

Crescent Junction Site - Radioparticulates (mrem)			
Station No.	2Q24	3Q24	Diff
0306	Station Eliminated		
0307	0.17	0.18	0.01
0308	0.23	0.3	0.07
0309	0.37	0.44	0.07

Crescent Junction Site - Radon (pCi/L)			
Station No.	2Q24	3Q24	Diff
0301	0.22	0.38	0.16
0311	0.19	0.38	0.19
0312	0.32	0.46	0.14
0313	0.65	0.84	0.19
0314 (MEI)	0.43	0.97	0.54
0315	0.46	0.51	0.05

# RESOURCES

## Online

- <https://www.energy.gov/em/moab/moab-umtra-homepage>
- <https://www.grandcountyutah.net/257/Moab-UMTRA-Project>
- <https://www.grandcountyutah.net/206/Moab-Tailings-Project-Site-Futures-Commi>
- Moab UMTRA Project Five-Year Site Plan FY's 2022-2026 (DOE): <https://www.gjem.energy.gov/documents/Five-YearSitePlan22.pdf>
- Moab UMTRA Project Surface Water and Groundwater Project Documents <https://www.energy.gov/em/moab/surface-water-and-groundwater>
- **Public meetings**
- *Moab Tailings Project Steering Committee, quarterly (July 22 and October 28)*
- *Site Futures Committee: 2013, 2018, and 2023*
- **UMTRA Reading Room (Library)**
- **Contact Grand County's UMTRA Liaison at** [jthacker@grandcountyutah.net](mailto:jthacker@grandcountyutah.net)

The background features abstract, overlapping geometric shapes in various shades of blue, ranging from light sky blue to deep navy blue, creating a modern, dynamic feel.

QUESTIONS?