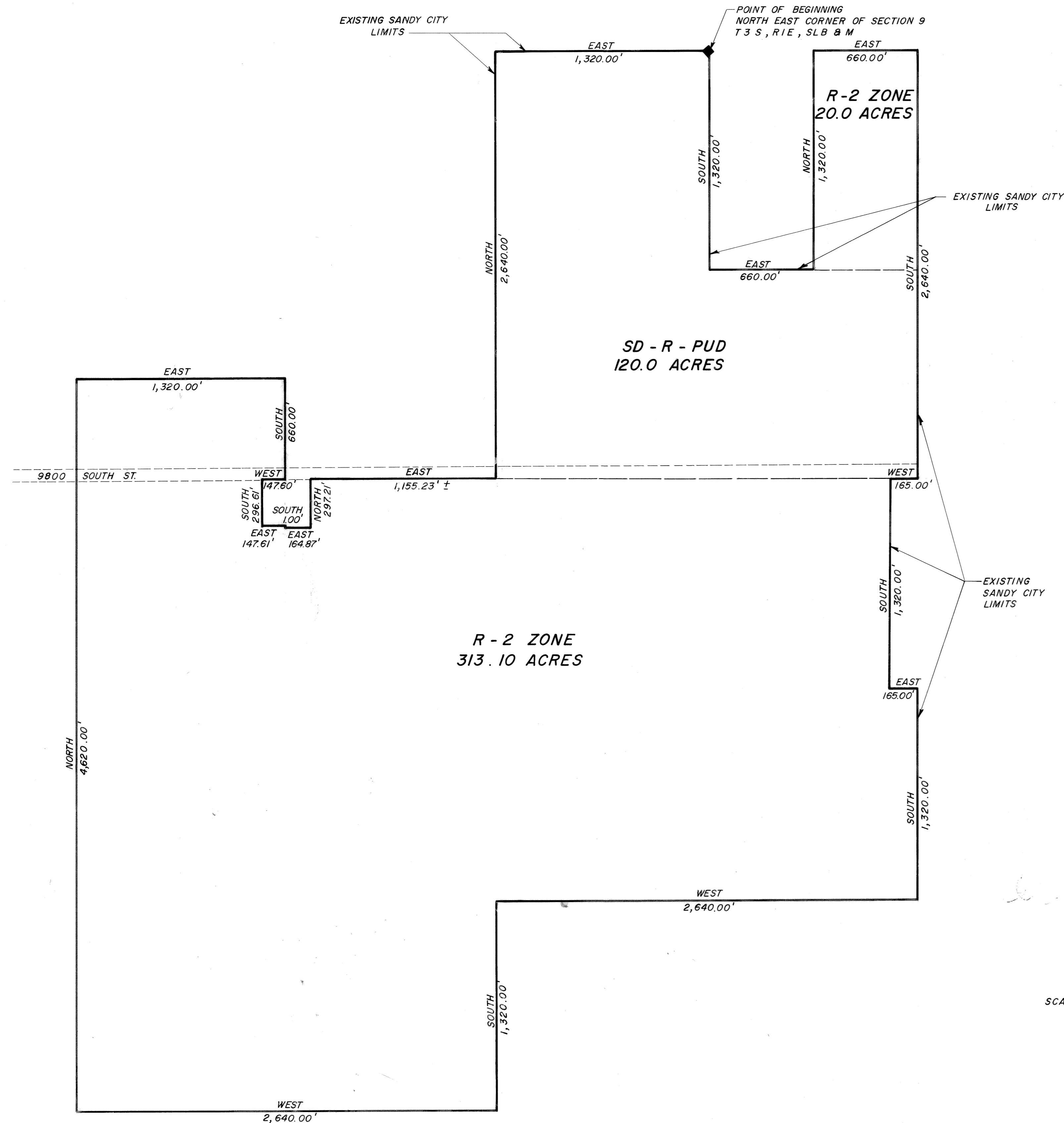


EXTENSION OF SANDY CITY LIMITS



LEGAL DESCRIPTION

BEGINNING AT THE NORTH EAST CORNER OF SECTION 9, TOWNSHIP 3 SOUTH, RANGE 1 EAST, SALT LAKE BASE AND MERIDIAN, AND RUNNING THENCE SOUTH 1,320 FEET, THENCE EAST 660 FEET, THENCE THENCE NORTH 1,320 FEET, THENCE EAST 660 FEET, THENCE SOUTH 2,640 FEET, THENCE WEST 165 FEET, AND RUNNING THENCE SOUTH 1,320 FEET, THENCE EAST 165 FEET, THENCE SOUTH 1,320 FEET, THENCE WEST 2,640 FEET, THENCE SOUTH 1,320 FEET, THENCE WEST 2,640 FEET, THENCE NORTH 4,620 FEET, THENCE EAST 1,320 FEET, AND RUNNING THENCE SOUTH 660 FEET, THENCE WEST 147.60 FEET, THENCE SOUTH 296.61 FEET, THENCE EAST 147.61 FEET, THENCE SOUTH 1 FOOT, THENCE EAST 164.87 FEET, AND RUNNING THENCE NORTH 297.21 FEET, THENCE EAST 1,155.23 FEET, MORE OR LESS, THENCE NORTH 2,640 FEET, THENCE EAST 1,320 FEET TO THE POINT OF BEGINNING.

ENGINEER'S CERTIFICATE

I HERE-BY CERTIFY THAT THIS IS A TRUE AND CORRECT MAP OF THAT AREA TO BE ANNEXED TO THE CORPORATE LIMITS OF SANDY CITY, UTAH.

MAR. 16, 1977
DATE

Philip L. Palmer
PHILIP L. PALMER - CERT. # 3603

SANDY CITY APPROVAL

APPROVED THIS 9th DAY OF February A.D., 1977
BY THE SANDY CITY COUNCIL.

Charles H. H.
SANDY CITY RECORDER

Philip L. Palmer
SANDY CITY MAYOR

R. J. Gunn
SANDY CITY ATTORNEY

RECORDED # 2722273
STATE OF UTAH, COUNTY OF SALT LAKE, RECORDED AND FILED AT THE REQUEST OF
DATE March 22, 1977 TIME 5:00 p.m. BOOK 17-3 PAGE 80
FEE \$ No Fee
SALT LAKE COUNTY RECORDER

PETERSEN / JARDINE / WHITE ANNEXATION

NE NE, SE NE, NE SE, SE SE } 9 3516
SE NW, NE SW, SE SW, NW SE, SW SE }
W/4 NW, W/4 SW, 10 35 16 35 16
NW NE NE NW 16 35 16

17-3-80

17-3-80