

JORDANELLE SPECIAL SERVICE DISTRICT

REQUEST FOR PROPOSALS

Cover Sheet

| General Information | |
|---|---|
| Project Name | Metal Building Materials for Shop Building |
| Project Description | The Jordanelle Special Service District ("JSSD") desires to construct a Shop Building. This proposal includes fabricating, supplying and delivering the metal building materials to site. |
| Contract Type | – Lump Sum (See Price Form) |
| Contract Administrator | Max Covey 5360 Old Hwy 40 Heber City, Utah 84032 mcovey@jssd.us |
| Project Manager | Tavis Timothy, PE BT Engineering tavis@t-b-eng.com |
| <i>All communications regarding this solicitation must be through the Contract Administrator <u>and</u> copied to the Project Manager.</i> | |
| RFP Schedule | |
| • JSSD Issues Request for Proposals | March 17, 2025 |
| • Deadline to submit Questions | March 27, 2025 @ 5:00 p.m. |
| • Deadline to submit Proposals | April 1, 2025 @ 3:00 p.m. |
| Evaluation Factors | |
| JSSD will select the supplier whose proposal offers the best value to JSSD. This means that JSSD might not select the proposal with the lowest price, and might not select the supplier with the most experience. Rather, JSSD will select the proposal that offers the best value, based on a combination of price and experience/quality factors listed below. | |
| Proposal Contents | |
| <p>To be considered for this Project, you must submit your proposal <i>in two separate parts</i>:</p> <ol style="list-style-type: none"> 1. Quality Proposal. Please complete the Quality Proposal Information Form included in Part D of this RFP. Be sure to address the following, which will be used in the evaluation of your Proposal: <ol style="list-style-type: none"> a. Experience. Describe other projects you have completed that are similar to this project. b. References. List the names and contact information for at least 2 people for each project listed (Owner & Engineer). | |

- c. Plan. Describe how you will approach the project to ensure that it is successfully completed and on schedule
2. **Price Proposal.** Please submit the Price Form included in Part D of this RFP. ***This must be in a separate file from the Quality Proposal.*** JSSD will not open the Price Proposals until it has evaluated the Quality Proposals.

Email your Quality Proposal and Price Proposal to the JSSD Contract Administrator listed above and Project Manager at tavis@b-t-eng.com , before the Deadline listed above.

Included as part of this RFP

Part A – Project Information

The following documents will accompany the Request for Proposal:

- Epic Engineering Preliminary Plans for Shop Building

Part B – Standard Terms of Solicitation

Part C – JSSD Standard Contract Terms

Part D – Forms

- Price Form
- Quality Proposal Information

JORDANELLE SPECIAL SERVICE DISTRICT

Request for Proposals

Part A – Project Information

1. The Special Service District

The Jordanelle Special Service District (“JSSD”) is a special service district organized pursuant to Utah Code Ann. § 17D-1-101 *et seq.* JSSD provides culinary water and sanitary sewer services in portions of Wasatch County, Utah. The Wasatch County Council serves as the governing body of JSSD, which is managed by a General Manager.

2. The Project

This project includes supplying the metal building portion of the proposed JSSD Shop.

3. Schedule

JSSD Issues Request for Proposals: March 17, 2025
(Location – JSSD Offices - 5388 N. Old Hwy 40, Heber City, Utah 84032)
Deadline to Submit Questions March 27, 2025, @ 5:00 p.m.
Proposals Due..... April 1, 2025, @ 3:00 p.m.
Recommendation for Award at JSSD Board Meeting: April 8, 2025
Notice of Award April 10, 2025
Notice to Proceed..... April 17, 2025
Preliminary Anchor Bolt Reaction Calculations Completed..... May 9, 2025
Shop Drawings Submitted By May 12, 2025
Final Delivery (after approval of design & submittals) 10 Weeks

4. Project Information

The project has the following components:

- Supply metal building with dimensions as shown on the drawings. Exterior walls to be R-23 4” Insulated Metal Panels (IMP). Roof to be 24 gauge standing seam metal. Price also includes R-30 Insulation for roof. Building supplier will supply preliminary anchor bolt reactions and base plate layout, as well as final stamped construction drawings and calculations. Price to include delivery fees to site. Price also to include insulated overhead metal doors as shown on the drawings.

REQUEST FOR PROPOSALS

Part B – Standard Terms of Solicitation

1. INSTRUCTIONS TO PROPOSERS

A. Submission of Proposals.

Proposals will be received by the Contract Administrator ***via email*** at mcovey@jssd.us **AND** to Project Manager at tavis@b-t-eng.com , or as otherwise arranged between the Proposers and the Contract Administrator. The Contract Administrator will log the date and time of each Proposal received. Any Proposal received after the Deadline to Submit Proposals listed on the RFP Cover Sheet will be considered non-responsive. It is the responsibility of the Proposer to ensure that its Proposal is received by the Contract Administrator by the specified time.

B. Minimum Standards.

This RFP sets forth the minimum requirements that all Proposals must meet. Failure to submit Proposals in accordance with this RFP may render the Proposal unacceptable or non-responsive. JSSD may, in its sole discretion, waive minor irregularities in a Proposal that do not alter the quality or quantity of the information provided.

C. Confidential, Protected, and Public Information

In accordance with Utah Code Section 63G-2-305(6) of the Government Records Access and Management Act ("GRAMA"), information related to this procurement will not be made public until after execution of the contract with the successful Proposer. Procurement information includes the Proposals submitted by Proposers in response to this RFP and any accompanying documentation, as well as records maintained by JSSD during the procurement process.

JSSD will maintain a process to ensure confidentiality for the duration of this procurement. If the Proposer submits information in its Proposal that it believes is "trade secret," the Proposer must follow the procedure set forth in Section 63G-2-309 of GRAMA.

Additionally, for ease of Proposal evaluation, JSSD requests that each Proposer also follow the steps identified below:

- 1) Clearly mark all trade secret information as such in its Proposal at the time the Proposal is submitted, and state in a cover letter that the "DOCUMENT CONTAINS TRADE SECRET INFORMATION," and identifying each section and page which has been so marked;
- 2) Include a statement with its Proposal justifying the Proposer's determination that certain records are trade secret information for each record so defined;

3) In addition to the Proposal copies submitted in accordance with the Submittal Instructions on the RFP Cover Sheet, submit one electronic copy of the Proposal that has all the trade secret information deleted from the Proposal and label such copy of the Proposal "Public Copy." If a Proposer submits a Proposal containing no trade secret information, no "Public Copy" need be submitted. However, any Proposer that submits a Proposal containing no trade secret information must so certify in a cover letter to its Proposal; and

4) Defend any action seeking release of the records it believes to be trade secret information and indemnify, defend, and hold harmless JSSD and its agents and employees from any judgments awarded against JSSD or its agents and employees in favor of the party requesting the records, including any and all costs connected with that defense. This indemnification survives JSSD's cancellation or termination of this procurement or award and subsequent execution of the contract. In submitting a Proposal, the Proposer agrees that this indemnification survives as long as the trade secret information is in possession of JSSD.

All records pertaining to this procurement will become public information after execution of the Contract, unless such records are identified as trade secret information as specified above. No liability will attach to JSSD or its agents for the errant release of trade secret information by JSSD or its agents under any circumstances.

D. Submitting Questions to JSSD

Questions and Requests for changes to the RFP must be submitted via email. All questions must be directed to the Contract Administrator and to the Project Manager identified on the RFP Cover Sheet. Questions must be received no later than the Deadline to submit Questions listed on the RFP Cover Sheet.

JSSD's answers to timely questions will be issued by the Contract Administrator. Answers, if pertinent and without identifying the party who posed the question, may be provided via addenda.

E. Requests for Approved Equals or Changes

Whenever a brand, manufacturer, or product name is indicated in this RFP, they are included only for the purpose of establishing identification and a general description of the item. Wherever such names appear, the term "or approved equal" is considered to follow.

Requests for Approved Equals must be submitted to the Contract Administrator and Project Manager via email, no later than the Deadline to Submit Questions.

Any request for an approved equal must be fully supported with technical data, test results, or other pertinent information as evidence that the substitute offered is equal or better than the RFP requirement.

It should be understood that specifying a brand name, components, and/or equipment in this RFP will not relieve the Proposer from its responsibility to provide the product in accordance with the performance specifications, warranty, and contractual

requirements. The Proposer shall notify JSSD of any inappropriate brand name, component, and/or equipment that may be called for in this RFP and shall propose a suitable substitute for consideration.

F. Multiple or Alternative Proposals

Submission of multiple or alternative Proposals, except as specifically called for in the RFP, may render all such Proposals non-responsive and may cause the rejection of some or all of such Proposals.

G. Withdrawal of Proposals

A Proposer may withdraw its Proposal before the Proposal due date without prejudice to itself by submitting a written request for its withdrawal to the Contracts Administrator. If a Proposer withdraws its Proposal prior to the Deadline to Submit Proposals, JSSD will return the Proposal to the Proposer.

H. Cost of Proposals

JSSD is not liable for any costs incurred by Proposers in the preparation of Proposals submitted in response to this RFP.

I. Examination of Request for Proposals

The submission of a Proposal constitutes an acknowledgment upon which JSSD may rely that the Proposer: (i) has thoroughly examined and is familiar with the RFP, including any contractual terms included in the RFP, (ii) is familiar with any work site identified in the RFP, and (iii) has reviewed and inspected all applicable statutes, regulations, ordinances, and resolutions addressing or relating to the goods and services to be provided hereunder. The failure or neglect of a Proposer to receive or examine such documents, work sites, statutes, regulations, ordinances, or resolutions will in no way relieve the Proposer from any obligations with respect to the Proposer's Proposal or to any contract awarded pursuant to this RFP. No reduction or modification in the Proposer's obligations will be allowed based upon a lack of knowledge or misunderstanding of this RFP, work sites, statutes, regulations, ordinances, or resolutions.

J. Firm Offer

Unless otherwise stated in this RFP, submission of a Proposal constitutes an offer to provide the goods or services described in the RFP, for the price set forth in the Proposal. Such offer must be good and firm for a period of ninety (90) days after the Deadline to Submit Proposals.

K. No Collusion

By submitting a Proposal, the Proposer represents and warrants that its Proposal is genuine and not a sham, and that the Proposer has not colluded with any other parties regarding this procurement process. If JSSD learns that the Proposal is not genuine, or that the Proposer did collude with other parties, or engaged in any anti-competitive or fraudulent practices in connection with this procurement process, JSSD may immediately terminate any resulting contract and seek any remedies available in equity or at law.

2. SELECTION PROCESS

A. Changes to the RFP Schedule

JSSD may make changes to the RFP Schedule in its sole discretion. Deadlines shown on the RFP Cover Sheet that apply to JSSD are estimates only, and may be adjusted by JSSD in its sole discretion.

B. Addenda to the Request for Proposals

JSSD may make changes to the RFP, by issuing a written addendum to the RFP. Addenda will be posted on the JSSD website. Suppliers are responsible for checking for addenda on the JSSD website throughout the proposal process. It is also the responsibility of the Supplier to acknowledge all addendums on the submitted Price Form.

C. JSSD's Procurement Options

Based on submitted information, JSSD may do or take any of the following actions, without limitation:

- select a Proposer based solely on the written Proposals, with or without subsequent negotiations;
- ask for more information or Clarifications before making a selection;
- determine a Short List, conduct Discussions, and/or request Best and Final Offers ("BAFOs") before making a selection;
- if a material error in the RFP is discovered during the evaluation process, JSSD may issue an addendum to all Proposers that have submitted Proposals requesting revised Proposals based upon the corrected RFP.
- decline to accept any Proposal;
- re-advertise;
- cancel the RFP without awarding a contract;
- cancel the RFP and award the contract on a sole source basis;
- elect to otherwise procure the needed services in accordance with JSSD policy and procedures.

JSSD reserves the right to negotiate price, scope, schedule, and other contract terms with the preferred Proposer after a selection is made.

D. Responsiveness

Proposals that are conditional, that attempt to modify the RFP requirements, that contain additional terms or conditions, or that fail to conform to the requirements or specifications of the RFP may be considered non-responsive.

E. Responsibility

JSSD will not select a Proposer who is deemed by JSSD, in its sole discretion, to lack the ability or responsibility to perform successfully under the terms of the contract. Such determination of responsibility may encompass management, technical, legal, and financial matters.

F. Checking References

JSSD reserves the right to contact any reference specifically named by the Proposer in its Proposal or any other additional references as deemed appropriate by JSSD, including references suggested by the Proposer's named references or references known to JSSD through its own knowledge of the industry.

G. Requests for Clarification

The Proposer shall provide accurate and complete information to JSSD. If information is incomplete, appears to include a clerical error, or is otherwise unclear, JSSD may either (i) declare the Proposal non-responsive, (ii) evaluate the Proposal as submitted, or (iii) issue a Request for Clarifications to the Proposer stating the information needed and a date and time by which the information must be provided. If the Proposer does not respond to the Request for Clarifications in a timely manner, or if the Proposer's response is deemed to be insufficient by JSSD, in its sole discretion, then JSSD may declare the Proposal non-responsive.

H. Short Listing

JSSD may declare a Short List including only those Proposers that have a reasonable chance of being selected. JSSD will declare a Short List, if it chooses to do so, after a careful analysis of the Proposals. JSSD may declare a Short List of only one Proposer. JSSD will not be required to announce how many Proposers are on the Short List.

I. Discussions

JSSD may, at its sole discretion, conduct written and/or verbal Discussions with any of the Proposers on the Short List regarding the content of their Proposal. If Discussions are held, they will be held with all Proposers on the Short List.

J. Best and Final Offers

Although JSSD reserves the right to issue a request for Proposal revisions (including Best and Final Offers), JSSD is under no obligation to do so. JSSD may make its selection and award based on the initial Proposals submitted.

If JSSD requests Proposal revisions and/or BAFOs, Proposers on the Short List may be informed of and requested and/or allowed to revise their Proposals, including correction of any weaknesses, minor irregularities, errors, and/or deficiencies identified to the Proposers by JSSD following initial evaluation of the Proposals. The request for Proposal revisions and/or BAFOs will allow adequate time for the Proposers to revise their Proposals. Upon receipt of the Proposal revisions and/or BAFOs, the process of evaluation will be repeated. The process will consider the revised information and re-

evaluate and revise ratings as appropriate. Although this RFP allows for Proposal revisions and/or BAFOs, all efforts will be made to make a selection based on initial Proposals. If Discussions are held, JSSD will attempt to limit the selection process to a single BAFO following Discussions. If a Proposal revision and/or BAFO is requested of a Proposer, and that Proposer opts to not submit a Proposal revision and/or BAFO, that Proposer's original Proposal or most recent Proposal revision, as appropriate, will be treated as its BAFO.

K. Best Value Determination

JSSD will select the supplier whose proposal offers the **best value** to JSSD. This means that JSSD might not select the proposal with the lowest price, and might not select the supplier with the most experience. Rather, JSSD will select the proposal that offers the best value, based on a **combination** of price and experience/quality factors.

L. Negotiations

After selection but prior to award of the Contract, JSSD may, at its sole discretion, either conduct negotiations with the successful Proposer or JSSD may choose to not conduct negotiations with the successful Proposer and award the Contract to the successful Proposer based on its written Proposal and any additional information received during Discussions and Proposal revisions and/or BAFOs, if conducted.

If JSSD and the selected Proposer are unable to reach a meeting of the minds on the scope, contractual terms, and/or price of the Contract, then JSSD may, in its sole discretion, negotiate with the next most advantageous Proposer or choose to terminate the procurement in its entirety.

If JSSD receives only one responsive Proposal, JSSD reserves the right to negotiate all elements of the Proposal and the Contract with the sole responsive Proposer, including, but not limited to, profit.

M. Board Approval

Execution of a contract with the selected proposer may be subject to the approval of the JSSD Governing Body.

JORDANELLE SPECIAL SERVICE DISTRICT

Request for Proposals

Part C – Contract Terms



INVITATION FOR BIDS

Part D – Standard Contract Terms

1. **CONTRACT JURISDICTION, CHOICE OF LAW, AND VENUE:** Utah law governs this contract. The parties shall submit to the jurisdiction of the courts of the State of Utah for any dispute arising out of this Contract. Venue is in Fourth Judicial District Court for Wasatch County.
2. **LAWS AND REGULATIONS:** The Supplier and any and all supplies furnished by Supplier under this contract will comply fully with all applicable Federal and State laws and regulations, including applicable licensure and certification requirements, labor laws, non-discrimination laws, and environmental laws. Supplier is responsible to know what laws apply to its sale of the supplies. The omission of any applicable law in this paragraph will not relieve Supplier from its contractual obligation to JSSD to comply with such laws.
3. **RECORDS ADMINISTRATION:** The Supplier shall maintain all records necessary to properly account for the payments made to the Supplier for costs authorized by this contract. Supplier shall retain those records for at least one year after the contract terminates, or until all audits initiated within the one year have been completed, whichever is later. The Supplier shall allow JSSD, State, and Federal auditors, and JSSD agency staff, access to all the records relating to this contract, for audit, inspection, and monitoring of services. Such access must be during normal business hours, or by appointment and will be at JSSD's sole cost and expense and conducted in a manner not materially disruptive to Supplier's business.
4. **CONFLICT OF INTEREST:** Supplier states that it has not offered or given any gift or compensation prohibited by the laws of the State of Utah to any officer or employee of JSSD to secure favorable treatment with respect to being awarded this contract.
5. **INDEPENDENT CONTRACTOR:** Supplier is an independent contractor, and as such has no authorization, express or implied, to bind JSSD to any agreements, settlements, liability or understanding whatsoever, and shall not perform any acts as agent for JSSD, except as expressly set forth in this Contract. Compensation stated in this Contract is the total amount payable to the Supplier by JSSD. The Supplier is responsible for the payment of all income tax and social security tax due as a result of payments received from JSSD for these contract goods or services. Persons employed by JSSD and acting under the direction of JSSD will not be deemed to be employees or agents of the Supplier.
6. **STANDARD OF CARE:** Supplier shall perform any services to be provided under this Contract in a good and workmanlike manner, using at least that standard of care, skill and judgment which can reasonably be expected from similarly situated suppliers.

7. TERMINATION:

- a. **Termination for Convenience.** JSSD may terminate this contract, in whole or in part, at any time by written notice to the Supplier when it is in JSSD's best interest. JSSD shall pay Supplier its costs, including contract close-out costs, and profit on work performed, in production (including raw materials) or in transit up to the time of termination, including any other costs incurred by Supplier prior to its receipt of notice. To be paid those costs, the Supplier must promptly submit its termination claim to JSSD. If the Supplier has any property in its possession belonging to the JSSD, the Supplier shall account for the same, and dispose or deliver it in the manner the JSSD directs.
- b. **Termination for Default.** If the Supplier does not deliver supplies in accordance with the contract delivery schedule, or, if the contract is for services, the Supplier fails to perform in the manner called for in the contract, or if the Supplier fails to comply with any other provisions of the contract, the JSSD may terminate this contract for default. To terminate for default, JSSD must serve a notice of termination on the Supplier describing the nature of the Supplier's default. The Supplier will only be paid the contract price for supplies delivered and accepted, or services performed in accordance with the manner of performance set forth in the contract.

If it is later determined by JSSD that the Supplier had an excusable reason for not performing, such as a strike, fire, or flood, events which are not the fault of or are beyond the control of the Supplier, JSSD, after setting up a new delivery of performance schedule, may allow the Supplier to continue work, or treat the termination as a termination for convenience.

- c. **Opportunity to Cure.** JSSD may, in the case of a termination for default, allow the Supplier a period of time, to be determined by JSSD (but, in no event shall such time be less than five (5) days), to cure the default (that period of time, the "Cure Period"). In such case, the notice of termination will state the time period in which cure is permitted and other conditions deemed appropriate by JSSD.

If Supplier fails to remedy the default to JSSD's satisfaction within the Cure Period, JSSD may immediately terminate the Contract for default. Termination for default will not preclude JSSD from also pursuing all available remedies against Supplier and its sureties for the default.

- 8. **SALES TAX:** Supplier shall pass through any applicable sales tax. Sales taxes must be itemized on Supplier's invoices to JSSD.

- 9. **MOST FAVORED CUSTOMER:** Not Used

- 10. **DELIVERY:** Unless otherwise specified in this Contract, all deliveries will be F.O.B. destination with all transportation and handling charges paid by the Supplier. Responsibility and liability for loss or damage remains with Supplier until final inspection and acceptance, when responsibility will pass to JSSD, except as to latent defects, fraud, and Supplier's warranty obligations.

- 11. **INSPECTIONS:** Goods furnished under this contract will be subject to inspection and testing by the JSSD at times and places determined by the JSSD, as may be more specifically set forth in the contract

of which these Standard Contract Terms are a part. If the goods furnished are not in compliance with bid/proposal specifications, JSSD may reject the goods and require Supplier to either correct them without charge or deliver them at a reduced price which is equitable under the circumstances. If Supplier is unable or refuses to correct such goods within a time deemed reasonable by JSSD, then JSSD may cancel the order in whole or in part. The goods will be accepted or will be deemed to have been accepted by the JSSD no later than ten (10) days after delivery unless the JSSD notifies Supplier, in writing, to the contrary during said period stating how the goods are not in compliance with the Contract ("Acceptance"). After Acceptance, Supplier's sole liability and the JSSD's exclusive remedy for defective goods shall be Article 13 (Warranty).

12. INVOICING AND PAYMENT: The Supplier shall submit itemized invoices to JSSD within 60 days of delivery of goods or services. The JSSD contract number and/or purchase order number, along with the contract item number, must be listed on all invoices, freight tickets, and correspondence relating to the contract. Invoices for services or construction must indicate the time period covered by the invoice. The prices paid by JSSD will be those prices listed in the contract. JSSD may adjust or return any invoice reflecting incorrect pricing. Unless otherwise specified, payment terms are Net 30 days following receipt of invoice.

13. WARRANTY: Supplier warrants, represents and conveys full ownership, and clear title, free of all liens and encumbrances to the Goods delivered to JSSD under this Contract, conditioned upon receipt of payment in full when due hereunder. Supplier warrants for a period of one (1) year from shipment that: (i) the Goods perform according to all specific claims that Supplier made in its response to the solicitation; (ii) the Goods are suitable for the ordinary purposes for which such Goods are sold, (iii) the Goods are manufactured in a commercially reasonable manner; (iv) the Goods are manufactured and in all other respects create no harm to persons or property; and (v) the Goods are free of material defects. Unless otherwise specified in the Contract, all Goods provided shall be new and unused. If separate manufacturer's warranties are available for the Goods, execution of this Contract will be deemed an assignment of those warranties to JSSD, but will not limit Supplier's warranties hereunder.

Remedies available to JSSD include the following: Supplier will repair or replace Goods (at no charge to JSSD) within ten (10) days of any written notification demonstrating to Supplier that the Goods are in breach of the above warranty. If the repaired and/or replaced Goods prove to be in breach of the above warranty, Supplier will refund the full amount of any payments that have been made. There are no implied warranties, including any implied warranty of merchantability or fitness for a particular purpose.

14. INDEMNIFICATION: To the extent allowed by law, Supplier shall indemnify and hold harmless JSSD, and its officers and employees (the "Indemnitee(s)), and defend the affected Indemnitee(s), and any and all of its/their boards, officers, agents, representatives, employees, assigns and successors-in-interest, from and against any and all suits and causes of action, claims, charges, damages, demands, judgments, civil fines and penalties, or losses suffered by the Indemnitee(s) and any and all of its/their boards, officers, agents, representatives, employees, assigns and successors-in-interest as a result of a claim for death or bodily injury or personal injury to any person, including Supplier's employees, or physical damage or destruction to any tangible property, to the extent caused by the negligent performance of this contract on the part of the Supplier, except to the extent any such harm or damages caused by the negligence or willful misconduct of the affected Indemnitees(s).

- 15. PATENTS, COPYRIGHTS, ETC.:** Supplier shall indemnify and hold harmless JSSD and its officers and employees (the "Indemnitee(s)), and, at the option of the affected Indemnitee(s), defend the affected Indemnitee(s), and any and all of its/their boards, officers, agents, representatives, employees, assigns and successors-in-interest, from and against any and all suits and causes of action, claims, charges, damages, demands, judgments, civil fines and penalties, or losses of any kind or nature arising from the Supplier's use of any copyrighted or un-copyrighted composition, trade secret, patented or un-patented invention, article or appliance furnished or used in the performance of this contract. Supplier shall have no obligation hereunder and this provision shall not apply to: (i) any other equipment or processes, including goods provided by Supplier, which have been modified or combined with other equipment or process not supplied by Supplier or (ii) any action settled or otherwise terminated without the prior written consent of Supplier. If, in any such action, the goods are held to constitute an infringement, Supplier shall, at its option and its own expense, procure for JSSD the right to continue using said goods; or modify or replace it with non-infringing equipment. THE FOREGOING PARAGRAPHS STATE THE ENTIRE LIABILITY OF SUPPLIER AND EQUIPMENT MANUFACTURER FOR CLAIMS OF INFRINGEMENT.
- 16. HAZARDOUS MATERIALS:** The Supplier shall provide one set of the appropriate safety data sheet(s) (SDS) and container label(s) upon delivery of a hazardous material to JSSD.
- 17. PUBLIC INFORMATION:** Supplier acknowledges that the contract and related materials (invoices, orders, etc.) will be public documents under the Utah Government Records Access and Management Act (GRAMA). Supplier's response to the solicitation for this contract will also be a public document subject to GRAMA, except for legitimate trade secrets, so long as such trade secrets were properly designated in accordance with terms of the solicitation.
- 18. SEVERABILITY:** If any provision of this contract is declared by a court to be illegal or in conflict with any law, the validity of the remaining terms and provisions will not be affected; and the rights and obligations of the parties will be construed and enforced as if the contract did not contain the particular provision held to be invalid.
- 19. WRITTEN AMENDMENTS:** This contract may be amended, modified, or supplemented only by written amendment to the contract, executed by authorized persons of the parties hereto.
- 20. ASSIGNMENT:** Supplier shall not assign, sell, or transfer any interest in this Contract without the express written consent of JSSD, provided, however, that this shall not apply to a general pledge of assets to Supplier's customers.
- 21. FORCE MAJEURE:** Neither party to this contract will be held responsible for delay or default caused by fire, riot, acts of God and/or war which are beyond that party's reasonable control.
- 22. WAIVER:** Any waiver by a party of any breach of any kind or character whatsoever by the other party, whether such be direct or implied, will not be a continuing waiver of or consent to any subsequent breach of this Contract.
- 23. ENTIRE AGREEMENT:** The Contract of which these JSSD Standard Contract Terms are a part, constitutes the entire agreement between the parties with respect to the subject matter, and supersedes any and all other prior and contemporaneous agreements and understandings between the parties, whether oral or written. The terms of the Contract supersede any additional or conflicting terms or provisions that may be set forth or printed on the Supplier's work plans, cost

estimate forms, receiving tickets, invoices, or any other related standard forms or documents of the Supplier that may subsequently be used to implement, record, or invoice services hereunder from time to time, even if such standard forms or documents have been signed or initialed by a representative of JSSD. The terms of this Contract prevail in any dispute between the terms of this Contract and the terms printed on any such standard forms or documents, and such standard forms or documents will not be considered written amendments of this Contract.

- 24. LIMITATION OF LIABILITY:** In no event shall Supplier be liable for any special, incidental, indirect or consequential damages of any kind, whether in contract, warranty, tort, negligence, strict liability or otherwise. Supplier's maximum aggregate liability for any and all claims whether in contract, warranty, tort, negligence, strict liability, or otherwise for any loss or damage arising from or related to this Contract shall not exceed the 100% of the Contract price. The foregoing limitations on the types and amounts of liability will not apply to third party indemnity claims or to losses resulting directly or indirectly from Supplier's intentional misconduct.

JORDANELLE SPECIAL SERVICE DISTRICT

Request for Proposals

Part D – Forms

PRICE PROPOSAL FORM
Metal Building Material for Shop Building

Price Schedule – Metal Building Material for Shop Building

| Item No. | Description | Qty | Units | Unit Price | Total Price |
|---------------------------------------|--|-----|-------|------------|-------------|
| 1 | Supply metal building with dimensions as shown on the drawings. Exterior walls to be R-23 4" Insulated Metal Panels (IMP). Roof to be 24 gauge standing seam metal. Price also to includes R-30 Insulation for roof. Building supplier will supply preliminary anchor bolt reactions and base plate layout, as well as final stamped construction drawings and calculations. Preliminary anchor bolt reactions to be completed within 3 weeks after receiving the Notice to Proceed. Price to include delivery fees to site. Price also to include insulated overhead metal doors as shown on the drawings | 1 | LS | | \$ |
| Subtotal Price Schedule Amount | | | | | \$ |

Company Name:_____

Authorized Signature:_____

Date:_____

Addendum #1 _____

Addendum #2 _____

Addendum #3 _____

Jordanelle Special Service District
RFP – Metal Building Material for Shop Building

QUALITY PROPOSAL INFORMATION
Metal Building Material for Shop Building

The PROPOSER shall furnish the following information on the following form. Failure to comply with this requirement, misrepresent or provide inaccurate information will render the Proposal informal and may cause its rejection. Additional sheets shall be attached as required.

- (1) Suppliers' name and address:

- (2) Supplier's telephone number: _____.

- (3) Number of years as a supplier of this type of project under the present firm name:
_____ years.

- (4) Complete this form by listing all construction contracts completed by the Supplier during the last 3 years involving work of similar type (+10,000 sf) and comparable value.

- **Name of project:** _____

- Names and telephone number of the owner:

- Name and telephone number of the engineer:

- Location of project: _____

- Contract amount: _____

- Change order amount: _____

- Brief description of the work involved and if it was on schedule: _____

QUALITY PROPOSAL INFORMATION
Metal Building Material for Shop Building

- **Name of project:** _____

- Names and telephone number of the owner:

- Name and telephone number of the engineer:

- Location of project: _____

- Contract amount: _____

- Change order amount: _____

- Brief description of the work involved and if it was on schedule: _____

- **Name of project:** _____

- Names and telephone number of the owner:

- Name and telephone number of the engineer or architect:

- Location of project: _____

- Contract amount: _____

- Change order amount: _____

- Brief description of the work involved and if it was on schedule: _____

QUALITY PROPOSAL INFORMATION
Metal Building Material for Shop Building

- (7) Describe company approach to supplying materials for the project to ensure that it is successfully completed and on schedule, along with any special in-house control/quality processes, use additional sheets if needed.

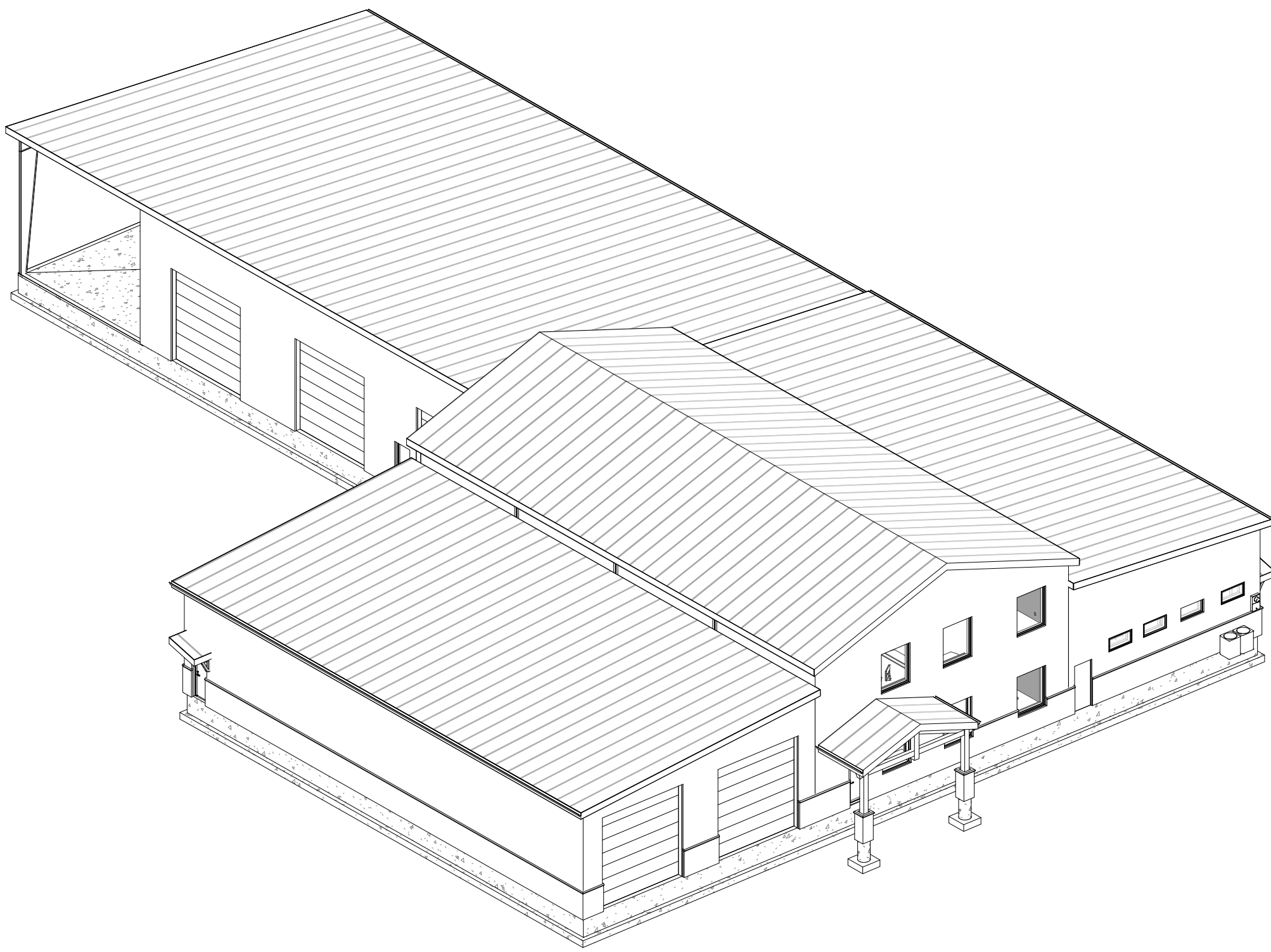
This image shows a blank sheet of white paper with horizontal ruling lines. The lines are evenly spaced and extend across the width of the page. There are no margins, text, or other markings on the paper.

JSSD OFFICE

OLD HWY 40, HEBER CITY UTAH



PROJECT VICINITY MAP
NTS



CODE ANALYSIS

| CODE CATEGORY | CODE REFERENCE | CODE REQUIREMENTS | ACTUAL BUILDING DESIGN |
|---|-----------------------------|---|---|
| APPLICABLE BUILDING CODES | | 2021 INTERNATIONAL BUILDING CODE 2021 INTERNATIONAL MECHANICAL CODE 2021 INTERNATIONAL FUEL GAS CODE 2021 INTERNATIONAL PLUMBING CODE 2021 INTERNATIONAL FIRE CODE 2021 INTERNATIONAL ENERGY CONSERVATION CODE 2020 NATIONAL ELECTRICAL CODE 2021 UNIFORM CODE FOR BUILDING CONSERVATION 2021 INTERNATIONAL FIRE CODE | 2021 INTERNATIONAL BUILDING CODE 2021 INTERNATIONAL MECHANICAL CODE 2021 INTERNATIONAL FUEL GAS CODE 2021 INTERNATIONAL PLUMBING CODE 2021 INTERNATIONAL FIRE CODE 2021 INTERNATIONAL ENERGY CONSERVATION CODE 2020 NATIONAL ELECTRICAL CODE 2021 UNIFORM CODE FOR BUILDING CONSERVATION 2021 INTERNATIONAL FIRE CODE |
| OCCUPANCY | 304.1, 306.2 | B, BUSINESS, S-1, STORAGE | B, BUSINESS/LOCKER ROOM; S-1, STORAGE |
| OCCUPANCY SEPARATION | TABLE 508.4 | SEPARATION REQUIRED | B, BUSINESS; S-1-STORAGE |
| CONSTRUCTION TYPE | CHAPTER 6 | TYPE II B | TYPE II B |
| ALLOWABLE FLOOR AREA | TABLE 506.2 | B 92,000 SF ALLOWABLE; S-1 170,000 SF ALLOWABLE | B 5579 SF; S-1 2,426 SF; B LOCKER 553 SF |
| AREA MODIFICATIONS | SECTION 506 EQUATION 5-3 | Aa = (At x If) + (At X Is)] | AREA MODIFICATIONS NOT NEEDED |
| MAXIMUM HEIGHT | TABLE 504.3 | B, S-1: 55' MAX | BUILDING HEIGHT: 31' - 5 7/8" |
| MAXIMUM STORIES | TABLE 504.4 | B, 4 STORIES MAX; S-1: 2 STORIES MAX | BUILDING: 2 STORIES |
| OCCUPANT LOAD | TABLE 1004.5 | B, S-1 | OCCUPANT LOAD 45 |
| ROOF COVERING | TABLE 1505.1 | CLASS C FIRE-RESISTANCE | METAL ROOF-CLASS A MOST RESTRICTIVE |
| DRAFT STOPS | SECTION 717.4 | NOT REQ'D | NOT REQ'D |
| FIRE-PROTECTION SYSTEMS | SECTION 903.2.1.4 | AUTOMATIC FIRE SPRINKLING SYSTEM REQUIRED | NFPA 13 FIRE SPRINKLING SYSTEM PROVIDED |
| EXITS | TABLE 1006.2.1 | 2 MIN REQ. EXITS PER OCCUPANT LOAD 1-500 | TWO ACCESSIBLE EXITS PROVIDED |
| MAXIMUM COMMON PATH OF EGRESS TRAVEL DISTANCE | TABLE 1006.2.1 | OCCUPANT LOAD MAX 49.75' MAX WITH AUTOMATIC FIRE SPRINKLING SYSTEM | COMMON PATH OF EGRESS TRAVEL DISTANCE <75' |
| FACILITY ACCESSIBILITY | SECTION 1104 | LEVEL 1 ACCESSIBILITY REQUIRED; LEVEL 2 ACCESSIBILITY NOT REQUIRED | LEVEL 1 ACCESSIBILITY PROVIDED; LEVEL 2 ACCESSIBILITY NOT PROVIDED |
| PLUMBING FIXTURES | TABLE 2902.1 | B: W.C. MALE & FEMALE 1/25 FOR THE FIRST 50; LAVS MALE & FEMALE 1/40 FOR THE FIRST 80; 1/200 D.F.; 1 SERVICE SINK 1. | PROVIDED: W.C. MALE 2 & WC FEMALE 2; 4 LAVS M & F; 1 D.F.; 1 S.S. |

PROJECT CONTACTS

CIVIL
JACKSON ENGINEERING
STEVE JACKSON
801-558-5293

STRUCTURAL
EPIC ENGINEERING
50 EAST 100 SOUTH
HEBER CITY, UTAH 84032
(435) 654-6600
ADAM HUFF

MECHANICAL & PLUMBING
EPIC ENGINEERING
50 EAST 100 SOUTH
HEBER CITY, UTAH 84032
(435) 654-6600
DILLON FUGATE

ELECTRICAL
EPIC ENGINEERING
50 EAST 100 SOUTH
HEBER CITY, UTAH 84032
(435) 654-6600
KYLE CARLSON

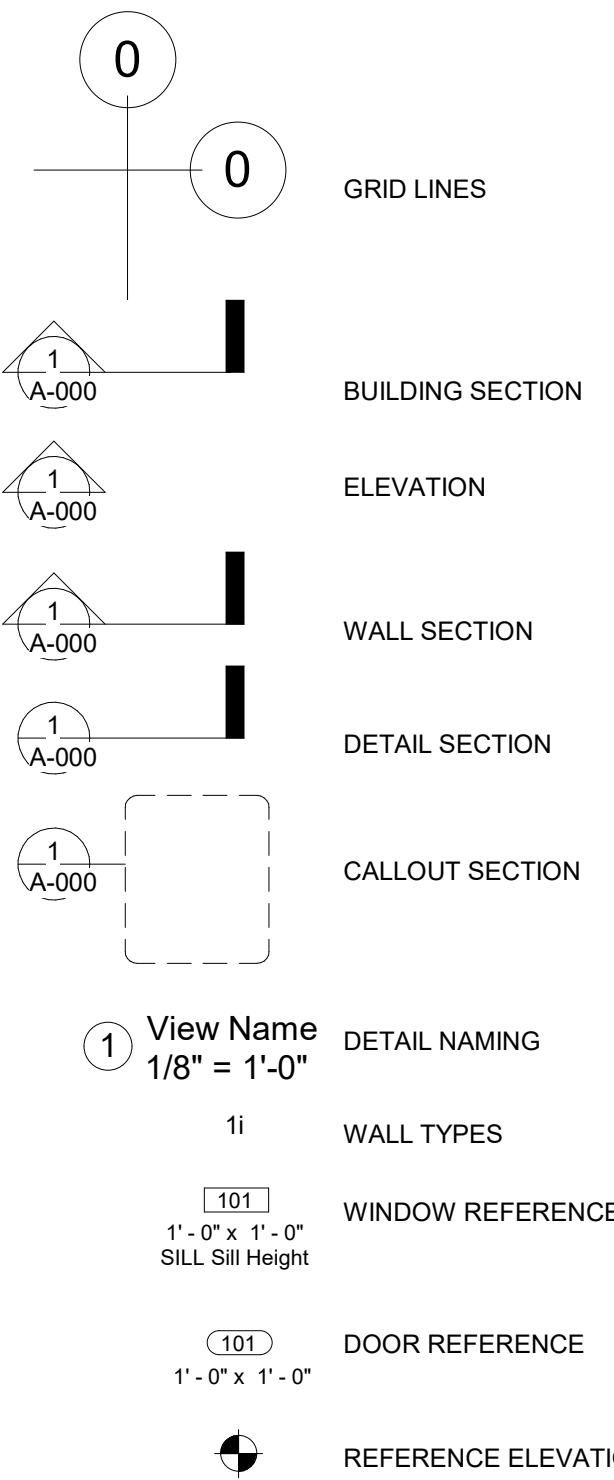
DEFERRED SUBMITTALS:

EPIC ENGINEERING

SCOPE OF WORK:

EPIC ENGINEERING

SYMBOL LEGEND



ABBREVIATIONS

| | | | |
|--|---|---|--|
| ALUM. APPROX. B.U. B.W. BLDG. BLK. C.J. C.M.U. CLG. COL. CONC. CONST. CONT. D.F. DIA. DN. DWG. DTL. EA. E.F. E.I.F.S. E.J. ELEC. ELEV. EQ. EXIST. EXT. F.D. FDN. FIN. FLR. F.R. FTG. G GAS G.I. GA. GALV. G.W.B. G.L.B. H.B. HD. H.M. HOR. HW. | ALUMINUM APPROXIMATE BUILT UP BOTH WAYS BUILDING BLOCK CONTROL JOINT CONCRETE MASONRY UNIT CEILING COLUMN CONCRETE CONSTRUCTION CONTINUOUS DRINKING FOUNTAIN DIAMETER DOWN DRAWING DETAIL EACH EXHAUST FAN EXT. INSUL. FINISH SYSTEM EXPANSION JOINT ELECTRIC/ELECTRICAL ELEVATION EQUAL EXISTING EXTERIOR FLOOR DRAIN FOUNDATION FINISH FLOOR FIRE RATED FOOTING GAS GALVANIZED IRON GAUGE GALVANIZED GYPSUM WALL BOARD GLU-LAM BEAM HOSE BIBB HEAD HOLLOW METAL HORIZONTAL HALLWAY | INT. INSUL. MAX. MECH. MIN. MTL. N.I.C. N.T.S. O.C. O.D. P PLYWD. PNTD. R.D. REG. R.S. REQ'D REV. RM. R.O. S.C. SCHED. SHT. SIM. SPEC. STD. STL. STRUCT. SYS. T&B T&G T.O. T.O.F. T.O.P. T.O.W. TYP. T.S. U.N.O. U.P. VERT. V.T.R. VCT W WD. WC. W/ WP. W.R. W.W.M. | INTERIOR INSULATION MAXIMUM MECHANICAL MINIMUM METAL NOT IN CONTRACT NOT TO SCALE ON CENTER OUTSIDE DIAMETER POWER PLYWOOD PAINTED ROOF DRAIN REGULAR ROUGH SAWN REQUIRED REVISED ROOM ROUGH OPENING SOLID CORE SCHEDULE SHEET SIMILAR SPECIFICATION STANDARD STEEL STRUCTURAL SYSTEM TOP AND BOTTOM TONGUE AND GROVE TOP OF TOP OF FOOTING TOP OF PIER TOP OF WALL TYPICAL TUBULAR STEEL COLUMN UNLESS NOTED OTHERWISE UNDER GROUND POWER VERTICAL VENT THRU ROOF VINYL COMPOSITE TILE WATER WOOD WATER CLOSET WITH WATERPROOF WELDED WIRE FABRIC WOVEN WIRE MESH |
|--|---|---|--|



18. AN EXPANSION TANK IS TO BE INSTALLED ON THE SUPPLY LINE TO THE WATER HEATER

G0.2

Indicate required Special inspections for project by checking the appropriate boxes and provide specific instructions as to the inspection requirements and the expectations of the architect, engineer and owner:

| | |
|--|----------------------------------|
| <input type="checkbox"/> Approved Fabricator | Fabricators Name: |
| <input type="checkbox"/> Unapproved Fabricator | Fabricators Name: |
| In-plant inspections | |
| <input type="checkbox"/> Steel Construction | <input type="checkbox"/> Welding |
| | <input type="checkbox"/> Details |

| Item | Detailed Instructions and Frequencies | |
|---|--|-----------------------------------|
| High Strength Bolting (1704.3.3) | <input type="checkbox"/> Continuous | <input type="checkbox"/> Periodic |
| WELDING (1704.3.1) | | |
| Details (1704.3.2) | | |
| Complete & partial penetration groove welds | <input checked="" type="checkbox"/> Continuous | <input type="checkbox"/> Periodic |
| Multipass fillet welds | <input type="checkbox"/> Continuous | <input type="checkbox"/> Periodic |
| Single-pass fillet welds > 5/16" | <input type="checkbox"/> Continuous | <input type="checkbox"/> Periodic |
| Single-pass fillet welds ≤ 5/16" | <input type="checkbox"/> Continuous | <input type="checkbox"/> Periodic |
| Floor & roof deck welds | <input type="checkbox"/> Continuous | <input type="checkbox"/> Periodic |
| REINFORCEMENT STEEL | <input type="checkbox"/> Continuous | |
| Verification of weldability | <input type="checkbox"/> Continuous | <input type="checkbox"/> Periodic |
| Shear wall and shear reinforcement | <input type="checkbox"/> Continuous | <input type="checkbox"/> Periodic |
| Other reinforcement | <input type="checkbox"/> Continuous | <input type="checkbox"/> Periodic |
| Steel frame joint details | <input type="checkbox"/> Continuous | <input type="checkbox"/> Periodic |

| Item | Detailed Instructions and Frequencies | |
|--|---------------------------------------|-----------------------------------|
| Materials (1704.4.1) | <input type="checkbox"/> Continuous | <input type="checkbox"/> Periodic |
| Steel placement | <input type="checkbox"/> Continuous | <input type="checkbox"/> Periodic |
| Steel welding | <input type="checkbox"/> Continuous | <input type="checkbox"/> Periodic |
| Bolts prior & during placement | <input type="checkbox"/> Continuous | <input type="checkbox"/> Periodic |
| Use of required design mix | <input type="checkbox"/> Continuous | <input type="checkbox"/> Periodic |
| Concrete sampling for strength test, slump, air content, and temperature of concrete | <input type="checkbox"/> Continuous | <input type="checkbox"/> Periodic |
| Concrete & shotcrete placement | <input type="checkbox"/> Continuous | <input type="checkbox"/> Periodic |
| Curing temperature and techniques | <input type="checkbox"/> Continuous | <input type="checkbox"/> Periodic |
| Pre-stressed concrete | <input type="checkbox"/> Continuous | <input type="checkbox"/> Periodic |
| Pre-cast concrete | <input type="checkbox"/> Continuous | <input type="checkbox"/> Periodic |
| Posttensioned concrete | <input type="checkbox"/> Continuous | <input type="checkbox"/> Periodic |
| Form work | <input type="checkbox"/> Continuous | <input type="checkbox"/> Periodic |

| Item | Detailed Instructions and Frequencies | |
|---|---------------------------------------|-----------------------------------|
| As masonry construction begins: | | |
| Site prepared mortar | <input type="checkbox"/> Continuous | <input type="checkbox"/> Periodic |
| Construction of mortar joints | <input type="checkbox"/> Continuous | <input type="checkbox"/> Periodic |
| Location of reinforcement, connectors, pre-stressing tendons and anchorages | <input type="checkbox"/> Continuous | <input type="checkbox"/> Periodic |
| Pre-stressing technique | <input type="checkbox"/> Continuous | <input type="checkbox"/> Periodic |
| Grade and size of pre-stressing tendons and anchorages | <input type="checkbox"/> Continuous | <input type="checkbox"/> Periodic |
| Inspection program verify: | | |
| Size and location of structural elements | <input type="checkbox"/> Continuous | <input type="checkbox"/> Periodic |
| Type, size and location of anchors | <input type="checkbox"/> Continuous | <input type="checkbox"/> Periodic |
| Size, grade and type of reinforcement | <input type="checkbox"/> Continuous | <input type="checkbox"/> Periodic |
| Welding of reinforcement | <input type="checkbox"/> Continuous | <input type="checkbox"/> Periodic |
| Cold and hot weather protection | <input type="checkbox"/> Continuous | <input type="checkbox"/> Periodic |
| Application and measurement of pre-stressing force | <input type="checkbox"/> Continuous | <input type="checkbox"/> Periodic |
| Prior to grouting verify | | |
| Clean grout space | <input type="checkbox"/> Continuous | <input type="checkbox"/> Periodic |
| Placement of reinforcement | <input type="checkbox"/> Continuous | <input type="checkbox"/> Periodic |
| Grout mix | <input type="checkbox"/> Continuous | <input type="checkbox"/> Periodic |
| Mortar joints | <input type="checkbox"/> Continuous | <input type="checkbox"/> Periodic |
| Grout placement | <input type="checkbox"/> Continuous | <input type="checkbox"/> Periodic |
| Grout and mortar specimens and prisms | <input type="checkbox"/> Continuous | <input type="checkbox"/> Periodic |
| Construction and submittal compliance verification | <input type="checkbox"/> Continuous | <input type="checkbox"/> Periodic |
| Empirical masonry – Cat. I-III (1708.1.1) | <input type="checkbox"/> Continuous | <input type="checkbox"/> Periodic |
| Empirical masonry – Cat. IV (1708.1.1) | <input type="checkbox"/> Continuous | <input type="checkbox"/> Periodic |
| Engineered masonry – Cat. I-III (1708.1.1) | <input type="checkbox"/> Continuous | <input type="checkbox"/> Periodic |
| Engineered masonry – Cat. IV (1708.1.1) | <input type="checkbox"/> Continuous | <input type="checkbox"/> Periodic |
| Engineering & pre-stressing steel (1708.3) | <input type="checkbox"/> Continuous | <input type="checkbox"/> Periodic |
| Structural steel (1708.4) | <input type="checkbox"/> Continuous | <input type="checkbox"/> Periodic |
| Qualification of mechanical & electrical equipment (1708.5) | <input type="checkbox"/> Continuous | <input type="checkbox"/> Periodic |
| Seismically isolated structures (1708.6) | <input type="checkbox"/> Continuous | <input type="checkbox"/> Periodic |
| Testing for seismic resistance is | <input type="checkbox"/> Continuous | <input type="checkbox"/> Periodic |

| WOOD CONSTRUCTION (IBC 1704.6) | | | |
|-----------------------------------|---------------------------------------|-----------------------------------|--|
| Item | Detailed Instructions and Frequencies | | |
| Prefabricated elements & assembly | <input type="checkbox"/> Continuous | <input type="checkbox"/> Periodic | |

| Item | Detailed Instructions and Frequencies | |
|--------------------------------|---------------------------------------|-----------------------------------|
| Site preparation | <input type="checkbox"/> Continuous | <input type="checkbox"/> Periodic |
| Structural fill material | <input type="checkbox"/> Continuous | <input type="checkbox"/> Periodic |
| Structural fill lift thickness | <input type="checkbox"/> Continuous | <input type="checkbox"/> Periodic |
| Structural fill soil densities | <input type="checkbox"/> Continuous | <input type="checkbox"/> Periodic |
| Backfill soils materials | <input type="checkbox"/> Continuous | <input type="checkbox"/> Periodic |
| Backfill soil densities | <input type="checkbox"/> Continuous | <input type="checkbox"/> Periodic |

| Item | Detailed Instructions and Frequencies | |
|---|---------------------------------------|-----------------------------------|
| Observe driving operation and reporting | <input type="checkbox"/> Continuous | <input type="checkbox"/> Periodic |
| Verify placement & installation data | <input type="checkbox"/> Continuous | <input type="checkbox"/> Periodic |

| Item | Detailed Instructions and Frequencies | |
|--|---------------------------------------|-----------------------------------|
| Observe drilling operation and reporting | <input type="checkbox"/> Continuous | <input type="checkbox"/> Periodic |
| Verify placement & installation data | <input type="checkbox"/> Continuous | <input type="checkbox"/> Periodic |

| Item | Detailed Instructions and Frequencies | |
|--------------------------------------|---------------------------------------|-----------------------------------|
| Structural member surface conditions | <input type="checkbox"/> Continuous | <input type="checkbox"/> Periodic |
| Material application | <input type="checkbox"/> Continuous | <input type="checkbox"/> Periodic |
| Material thickness | <input type="checkbox"/> Continuous | <input type="checkbox"/> Periodic |
| Material density | <input type="checkbox"/> Continuous | <input type="checkbox"/> Periodic |
| Bonding strength | <input type="checkbox"/> Continuous | <input type="checkbox"/> Periodic |

| Item | Detailed Instructions and Frequencies | |
|---------------------------|---------------------------------------|-----------------------------------|
| Material and installation | <input type="checkbox"/> Continuous | <input type="checkbox"/> Periodic |

| Item | Detailed Instructions and Frequencies | |
|---------------------------|---------------------------------------|-----------------------------------|
| Material and installation | <input type="checkbox"/> Continuous | <input type="checkbox"/> Periodic |

| Item | Detailed Instructions and Frequencies | |
|---------------------------|---------------------------------------|-----------------------------------|
| Material and installation | <input type="checkbox"/> Continuous | <input type="checkbox"/> Periodic |

| Item | Detailed Instructions and Frequencies | |
|---|---------------------------------------|-----------------------------------|
| Material and installation (specify locations) | <input type="checkbox"/> Continuous | <input type="checkbox"/> Periodic |

| Item | Detailed Instructions and Frequencies | |
|----------|---------------------------------------|-----------------------------------|
| Material | <input type="checkbox"/> Continuous | <input type="checkbox"/> Periodic |

| | | |
|--------------|-------------------------------------|-----------------------------------|
| Installation | <input type="checkbox"/> Continuous | <input type="checkbox"/> Periodic |
|--------------|-------------------------------------|-----------------------------------|

| Item | Detailed Instructions and Frequencies | |
|--|---------------------------------------|-----------------------------------|
| Structural Steel (1707.2) | <input type="checkbox"/> Continuous | <input type="checkbox"/> Periodic |
| Structural Wood (1707.3) | <input type="checkbox"/> Continuous | <input type="checkbox"/> Periodic |
| Cold-formed steel framing (1707.4) | <input type="checkbox"/> Continuous | <input type="checkbox"/> Periodic |
| Pier foundations (1707.5) | <input type="checkbox"/> Continuous | <input type="checkbox"/> Periodic |
| Storage racks & access floors (1707.6) | <input type="checkbox"/> Continuous | <input type="checkbox"/> Periodic |
| Architectural components (1707.7) | <input type="checkbox"/> Continuous | <input type="checkbox"/> Periodic |
| Mechanical & electrical items (1707.8) | <input type="checkbox"/> Continuous | <input type="checkbox"/> Periodic |
| Designated systems verification (1707.9) | <input type="checkbox"/> Continuous | <input type="checkbox"/> Periodic |
| Seismic isolation systems (1707.10) | <input type="checkbox"/> Continuous | <input type="checkbox"/> Periodic |

| These inspections are recommended by the Architect/Engineer and approved by DFCM. | | | |
|---|-------------------------------------|-----------------------------------|--|
| Suspended Ceiling Grid Clips | <input type="checkbox"/> Continuous | <input type="checkbox"/> Periodic | |
| Suspended Ceiling wire spacing (Seismic) | <input type="checkbox"/> Continuous | <input type="checkbox"/> Periodic | |
| Soils backfill (specify locations and frequency) | <input type="checkbox"/> Continuous | <input type="checkbox"/> Periodic | |
| Soils for curb and gutter (specify locations and frequency) | <input type="checkbox"/> Continuous | <input type="checkbox"/> Periodic | |
| Soils for parking lots (specify locations and frequency) | <input type="checkbox"/> Continuous | <input type="checkbox"/> Periodic | |
| Soils for utility trench backfill | <input type="checkbox"/> Continuous | <input type="checkbox"/> Periodic | |
| Reinforcement for slab on grade sidewalks and drive approaches (specify locations and frequency) | <input type="checkbox"/> Continuous | <input type="checkbox"/> Periodic | |
| Reinforcement for interior slab on grade (specify locations and frequency) | <input type="checkbox"/> Continuous | <input type="checkbox"/> Periodic | |
| Concrete testing for slab on grade sidewalks and drive approaches (specify locations and frequency) | <input type="checkbox"/> Continuous | <input type="checkbox"/> Periodic | |
| Concrete testing for interior slab on grade (specify locations and frequency) | <input type="checkbox"/> Continuous | <input type="checkbox"/> Periodic | |
| Masonry Veneer (specify locations and frequency) | <input type="checkbox"/> Continuous | <input type="checkbox"/> Periodic | |
| Asphalt inspection (specify locations and frequency) | <input type="checkbox"/> Continuous | <input type="checkbox"/> Periodic | |
| Asphalt testing (specify locations and frequency) | <input type="checkbox"/> Continuous | <input type="checkbox"/> Periodic | |
| Inspection of seismic resistance (specify locations and frequency) | <input type="checkbox"/> Continuous | <input type="checkbox"/> Periodic | |
| Steam and water line welding (specify locations and frequency) | <input type="checkbox"/> Continuous | <input type="checkbox"/> Periodic | |
| Seismic supports for duct work and sealing of joints for duct work | <input type="checkbox"/> Continuous | <input type="checkbox"/> Periodic | |

| | | | |
|---|-------------------------------------|-----------------------------------|--|
| (specify locations and frequency) | <input type="checkbox"/> Continuous | <input type="checkbox"/> Periodic | |
| Steam and water line welding (specify locations and frequency) | <input type="checkbox"/> Continuous | <input type="checkbox"/> Periodic | |
| Seismic supports for duct work and sealing of joints for duct | <input type="checkbox"/> Continuous | <input type="checkbox"/> Periodic | |

[illegible]

Special Inspectors Shall:

- Be approved by the Building Official prior to performing any duties;
- Provide proof of licensure as a special inspector by the State of Utah for each type of inspection;
- Inspection reports are to meet the requirements of IBC 1704.1.2 and DFCM standards;
- Inspection reports are to be submitted to the code consultant, architect, DFCM project manager, and the State of Utah Building Official within 48 hrs of inspections;
- A final inspection report shall be submitted following completion of the project documenting the types of special inspections performed and a statement indicating that the structure is in compliance with the drawings, specifications and applicable codes. IBC 1704.1.2

Updated October 8, 2009



MIRRORS-
BOTTOM EDGE OF REFLECTIVE SURFACE SHOULD BE MOUNTED NO HIGHER THAN 40" (1015MM) ABOVE THE FINISH FLOOR. A SINGLE FULL-LENGTH MIRROR IS RECOMMENDED IN EACH WASHROOM. IF IT IS UNIVERSALLY USABLE.

TOILET PAPER HOLDERS-
FOR UNIVERSAL ACCESS, ROLL DISPENSERS WITHOUT CONTROLLED RELEASE ARE PREFERRED. FOLDED-TISSUE DISPENSERS ARE NOT RECOMMENDED BECAUSE THEY REQUIRE A FINGER PINCHING ACTION. STANDARD TOILET TISSUE ROLLS SHOULD BE MOUNTED WITH THEIR FORWARD EDGE NO MORE THAN 36" (915MM) FROM THE BACK WALL AND THEIR HORIZONTAL CENTERLINE AT 48" (1219MM) ABOVE THE FINISH FLOOR.

SOAP DISPENSERS-
PUSH BUTTONS AND PISTONS SHOULD BE OPERABLE WITH ONE HAND AND WITHOUT TIGHT GRASPING, PINCHING, OR TWISTING OF THE WRIST. TOILET TISSUE DISPENSERS SHOULD NOT REQUIRE MORE THAN 5 POUNDS OF FORCE (22.2 N). IF WALL-MOUNTED UNITS ARE PLACED OVER LAVATORIES OR COUNTERTOPS, THEN THEIR PUSH BUTTONS SHOULD BE LOCATED 44" (1120MM) MAXIMUM ABOVE THE FINISH FLOOR.

ACCESS TOWEL DISPENSERS-
ACCESS TO PAPER TOWELS SHOULD BE 15" TO 48" (380-1220MM) ABOVE THE FINISH FLOOR TO ALLOW FORWARD AND SIDE REACH BY PEOPLE IN WHEELCHAIRS.

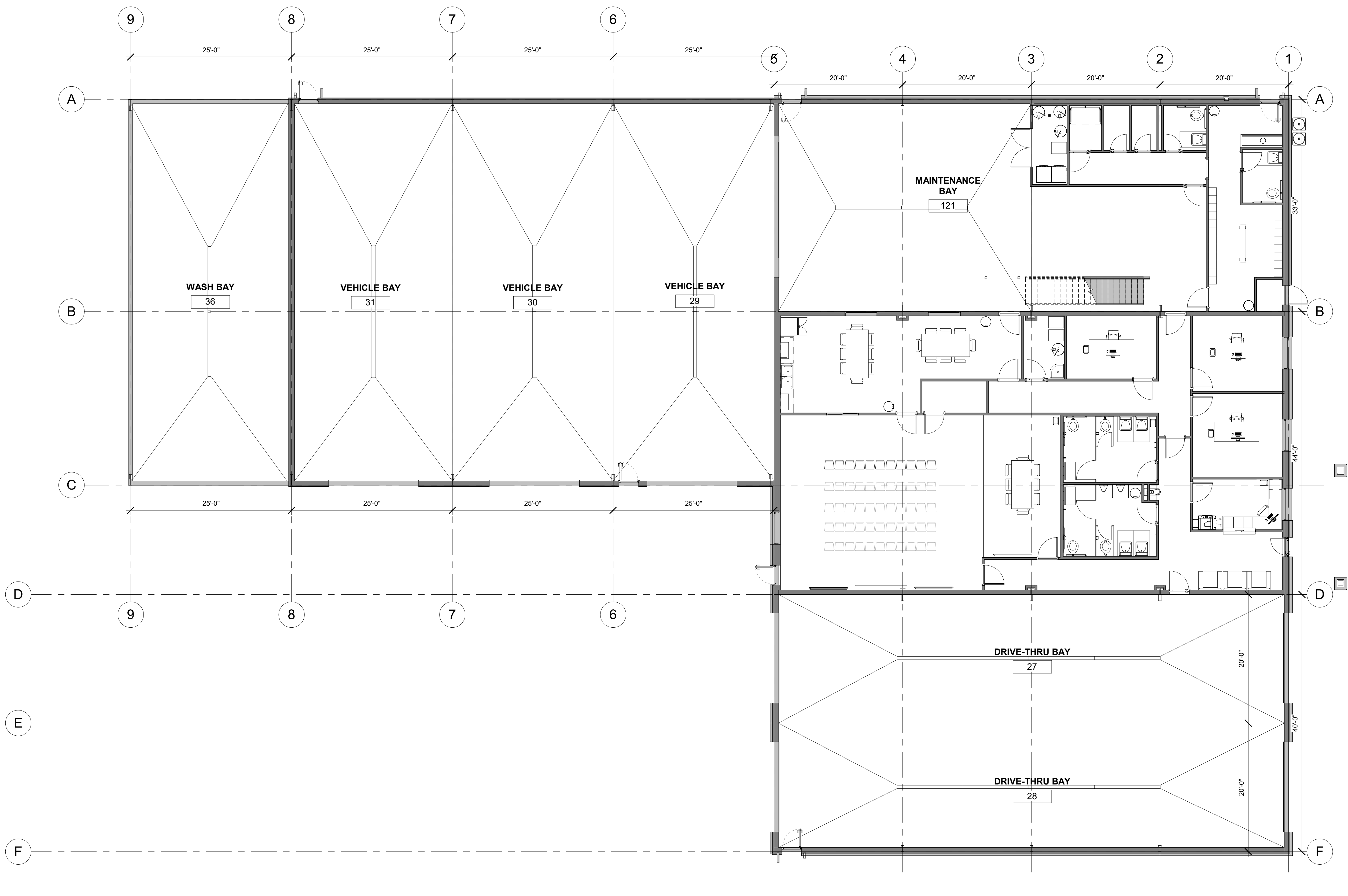
WASTE RECEPTACLES-
ACCESS TO RECYCLEABLE OPENINGS SHOULD BE 15" TO 48" (380-1220MM) ABOVE THE FINISH FLOOR TO ALLOW FORWARD AND SIDE REACH BY PEOPLE IN WHEELCHAIRS. HINGED PANELS COVERING WASTE RECEPTACLE OPENINGS SHOULD NOT REQUIRE MORE THAN 5 POUNDS OF FORCE (22.2N) TO OPEN. IT IS NOT RECOMMENDED THAT UNITS PROTRUDING MORE THAN 100MM (4") FROM THE WALL BE LOCATED IN CORNERS, ALCOVES, OR BETWEEN OTHER PROTRUDING STRUCTURAL ELEMENTS SO AS NOT TO BE A HAZARD TO BLIND PEOPLE OR INTERFERE WITH REQUIRED ACCESS AISLES AND THE 60" (1525MM) MINIMUM DIAMETER TURNING SPACES FOR WHEELCHAIRS.

GRAB BARS-
ALL ACCESSIBLE BATHING FACILITIES REQUIRE GRAB BARS INSTALLED TO MEET ADA SPECIFICATIONS. DIAMETER OF GRAB BARS SHOULD BE 1 1/4" (30-40MM) WITH 1/2" (12MM) CLEARANCE FROM THE WALL. GRAB BARS SHOULD NOT ROTATE IN THE HANDINGS. THE REQUIRED MOUNTING HEIGHT IS USUALLY 33" TO 36" (840-915MM) FROM THE CENTERLINE OF THE GRAB BAR TO THE FINISH FLOOR. STRUCTURAL STRENGTH OF GRAB BARS AND THEIR MOUNTING DEVICES SHOULD WITHSTAND NO MORE THAN 250 POUNDS OF FORCE (1112 N).

SIGNAGE-
ADA SIGNAGE TO CONFORM TO IBC 2982.5

26. AREA OF REFUGE TO HAVE TWO-WAY COMMUNICATION SYSTEM.

A0.1



1 FLOOR PLAN - OVERALL
1/8" = 1'-0"

CONSTRUCTION NOTES

DATE

3/10/2025 4:55:38 PM



REVISIONS

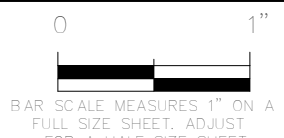
| MARK | DATE | DESCRIPTION |
|------|------|-------------|
| | | |
| | | |
| | | |

DRAWN: RED
DESIGNER: EPIC
REVIEWED: AJH

PROJECT #
25SM3932.16

SCALES

1/8" = 1'-0"



PROJECT NAME:

JSSD OFFICE

PROJECT LOCATION:

OLD HWY 40, HEBER
CITY UTAH

SHEET TITLE:

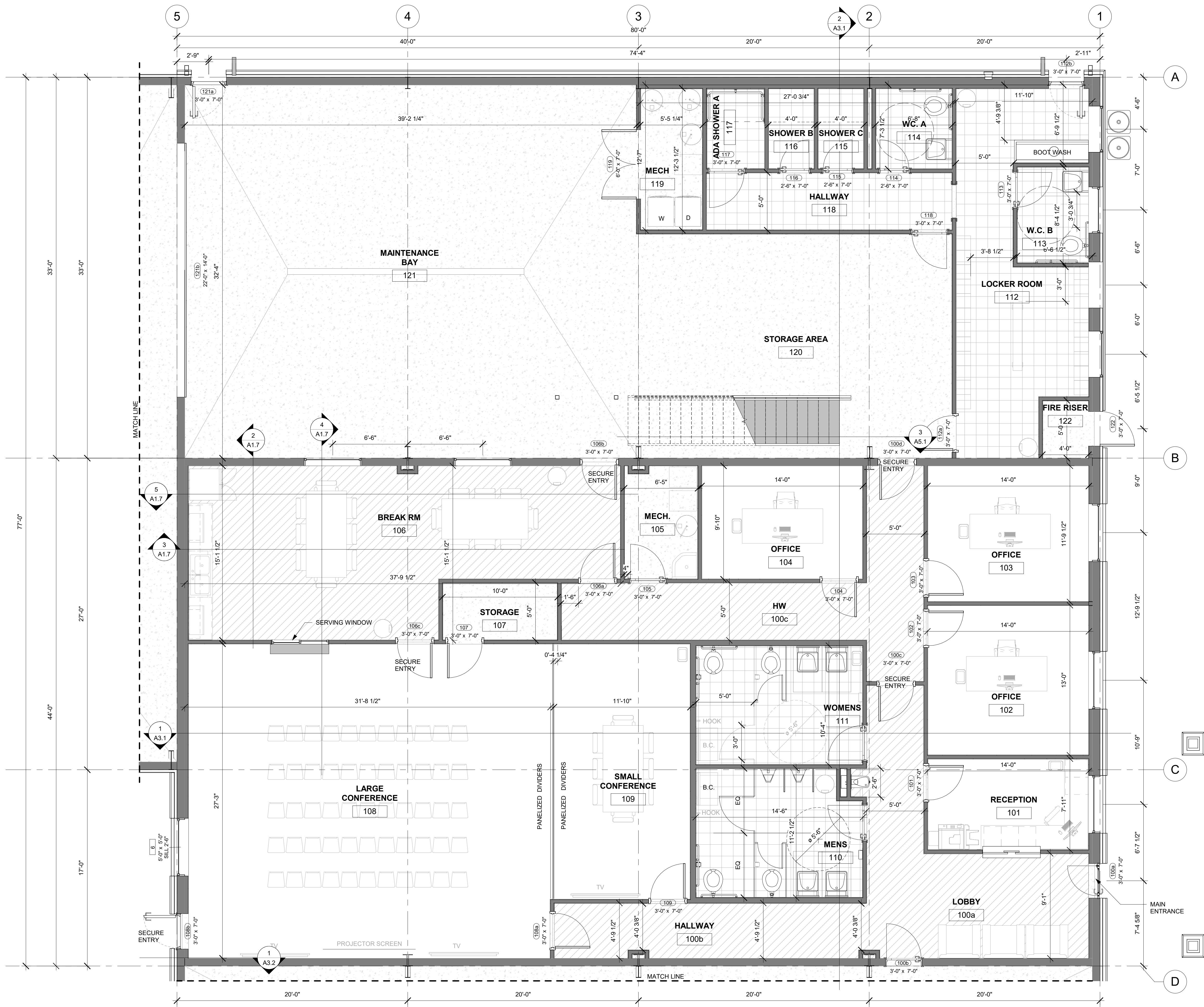
FLOOR PLAN -
OVERALL

PLAN SET:

BID SET

SHEET

A1.2



1 FLOOR PLAN - LEVEL 1
1/4" = 1'-0"

| LEVEL 1 ROOM INTERIOR SCHEDULE | |
|--------------------------------|----------|
| NAME | AREA |
| BREAK RM | 480 SF |
| OFFICE | 163 SF |
| OFFICE | 180 SF |
| RECEPTION | 109 SF |
| LOBBY | 254 SF |
| HALLWAY | 120 SF |
| MENS | 154 SF |
| WOMENS | 148 SF |
| SMALL CONFERENCE | 261 SF |
| LARGE CONFERENCE | 858 SF |
| LOCKER ROOM | 284 SF |
| HALLWAY | 104 SF |
| MAINTENANCE BAY | 1269 SF |
| WC. A | 46 SF |
| W.C. B | 51 SF |
| DRIVE-THRU BAY | 1573 SF |
| DRIVE-THRU BAY | 1521 SF |
| VEHICLE BAY | 1467 SF |
| VEHICLE BAY | 1467 SF |
| VEHICLE BAY | 1440 SF |
| WASH BAY | 1495 SF |
| STORAGE AREA | 527 SF |
| STORAGE | 49 SF |
| FIRE RISER | 20 SF |
| OFFICE | 136 SF |
| MECH. | 60 SF |
| ADA SHOWER A | 35 SF |
| SHOWER B | 27 SF |
| SHOWER C | 27 SF |
| MECH | 65 SF |
| HW | 222 SF |
| | 14613 SF |

CONSTRUCTION NOTES

DATE

3/10/2025 4:55:39 PM



REVISIONS

MARK DATE DESCRIPTION

DRAWN: RED
DESIGNER: EPIC
REVIEWED: AJH

PROJECT #
25SM3932.16

SCALES

As indicated



PROJECT NAME:

JSSD OFFICE

PROJECT LOCATION:

OLD HWY 40, HEBER
CITY UTAH

SHEET TITLE:

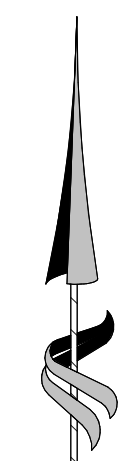
FLOOR PLAN - LEVEL 1

PLAN SET:

BID SET

SHEET

A1.3

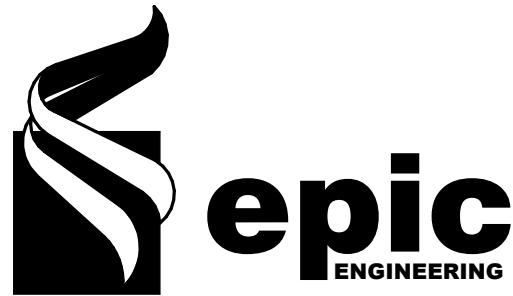


| LEVEL 2 ROOM SCHEDULE | |
|-------------------------|---------|
| NAME | AREA |
| OFFICE AREA | 2998 SF |
| PLASTIC PIPE / FITTINGS | 2544 SF |
| OFFICE SUPPLY | 129 SF |
| MECH. | 49 SF |
| IT / STORAGE | 149 SF |

CONSTRUCTION NOTES

DATE _____

3/10/2025 4:55:40 PM



| REVISONS | | |
|--|------|-------------|
| MARK | DATE | DESCRIPTION |
| | | |
| DRAWN: RED DESIGNER: EPIC REVIEWED: AJH | | |
| PROJECT # | | |
| 25SM3932.16 | | |

PROJECT NAME:

JSSD OFFICE

PROJECT LOCATION:

**OLD HWY 40, HEBER
CITY UTAH**

SHEET TITLE:

FLOOR PLAN - LEVEL 2

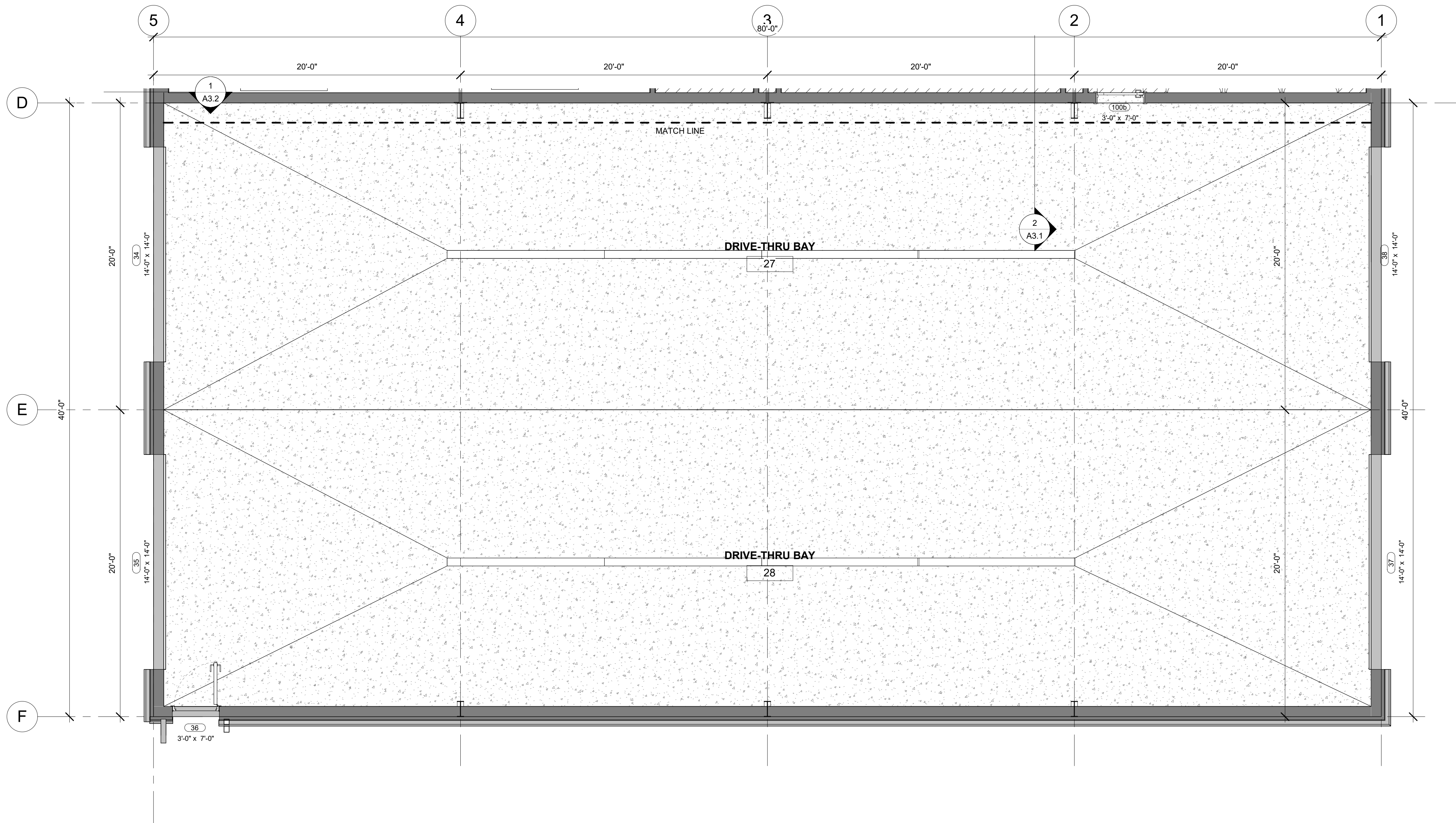
PLAN SET:

BID SET

SHEET

A1.4

1 FLOOR PLAN - LEVEL 2
1/4" = 1'-0"



② FLOOR PLAN - DRIVE-THRU BAYS
1/4" = 1'-0"

CONSTRUCTION NOTES

DATE

3/10/2025 4:55:40 PM



REVISIONS

| MARK | DATE | DESCRIPTION |
|------|------|-------------|
| | | |
| | | |
| | | |

DRAWN: RED
DESIGNER: EPIC
REVIEWED: AJH

PROJECT #
25SM3932.16

SCALES



PROJECT NAME:

JSSD OFFICE

PROJECT LOCATION:

OLD HWY 40, HEBER
CITY UTAH

SHEET TITLE:

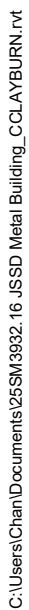
DRIVE-THRU BAYS

PLAN SET:

BID SET

SHEET

A1.5



3/10/2025 4:55:40 PM



1/4" = 1'-0"

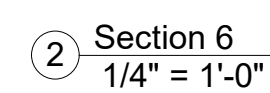
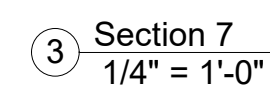
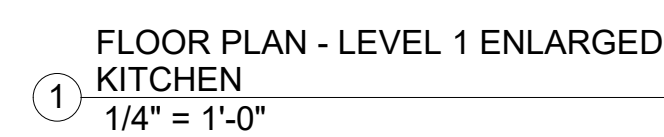
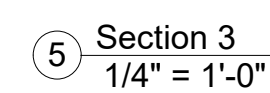
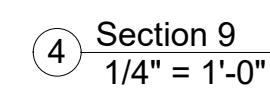


OLD HWY 40, HEBER
CITY UTAH

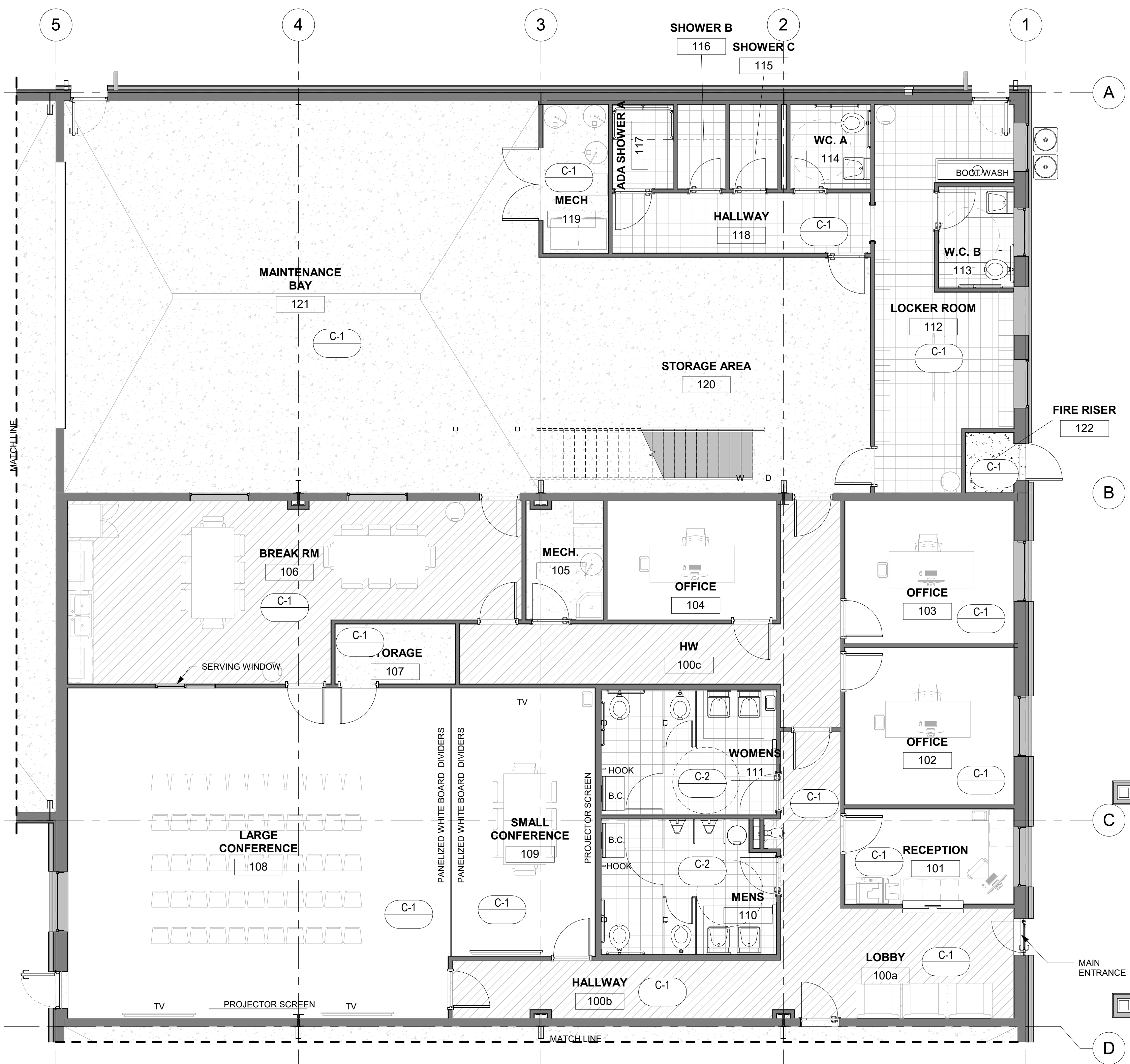
VEHICLE BAYS

BID SET

A1.6



A1.7



1 FLOOR PLAN - LEVEL 1 ROOM FINISHES
3/16" = 1'-0"

| ROOM FINISH SCHEDULE LEVEL 1 | | | | | | |
|------------------------------|------------------|---------|--------------|-------------|----------------|-------------|
| NO. | ROOM NAME | AREA | FLOOR FINISH | BASE FINISH | CEILING FINISH | WALL FINISH |
| 27 | DRIVE-THRU BAY | 1573 SF | CONCRETE | | | PAINT |
| 28 | DRIVE-THRU BAY | 1521 SF | CONCRETE | | | PAINT |
| 29 | VEHICLE BAY | 1467 SF | CONCRETE | | | PAINT |
| 30 | VEHICLE BAY | 1467 SF | CONCRETE | | | PAINT |
| 31 | VEHICLE BAY | 1440 SF | CONCRETE | | | PAINT |
| 36 | WASH BAY | 1495 SF | CONCRETE | | | PAINT |
| 100a | LOBBY | 254 SF | LAMINATE | | | PAINT |
| 100b | HALLWAY | 120 SF | LAMINATE | | | PAINT |
| 100c | HW | 222 SF | CARPET | | | PAINT |
| 101 | RECEPTION | 109 SF | CARPET | | | PAINT |
| 102 | OFFICE | 180 SF | CARPET | | | PAINT |
| 103 | OFFICE | 163 SF | CARPET | | | PAINT |
| 104 | OFFICE | 136 SF | CARPET | | | PAINT |
| 105 | MECH. | 60 SF | CONCRETE | | | PAINT |
| 106 | BREAK RM | 480 SF | LAMINATE | | | PAINT |
| 107 | STORAGE | 49 SF | CONCRETE | | | PAINT |
| 108 | LARGE CONFERENCE | 858 SF | CARPET | | | PAINT |
| 109 | SMALL CONFERENCE | 261 SF | CARPET | | | PAINT |
| 110 | MENS | 154 SF | TILE | | | PAINT |
| 111 | WOMENS | 148 SF | TILE | | | PAINT |
| 112 | LOCKER ROOM | 284 SF | TILE | | | PAINT |
| 113 | W.C. B | 51 SF | TILE | | | PAINT |
| 114 | WC. A | 46 SF | TILE | | | PAINT |
| 115 | SHOWER C | 27 SF | TILE | | | PAINT |
| 116 | SHOWER B | 27 SF | TILE | | | PAINT |
| 117 | ADA SHOWER A | 35 SF | TILE | | | PAINT |
| 118 | HALLWAY | 104 SF | LAMINATE | | | PAINT |
| 119 | MECH | 65 SF | CONCRETE | | | PAINT |
| 120 | STORAGE AREA | 527 SF | CONCRETE | | | PAINT |
| 121 | MAINTENANCE BAY | 1269 SF | CONCRETE | | | PAINT |
| 122 | FIRE RISER | 20 SF | CONCRETE | | | PAINT |

CONSTRUCTION NOTES

DATE

3/10/2025 4:55:41 PM



REVISIONS

| MARK | DATE | DESCRIPTION |
|------|------|-------------|
|------|------|-------------|

DRAWN: RED
DESIGNER: Designer
REVIEWED: AJH

PROJECT #
25SM3932.16

SCALES

3/16" = 1'-0"



PROJECT NAME:

JSSD OFFICE

PROJECT LOCATION:

OLD HWY 40, HEBER
CITY UTAH

SHEET TITLE:

LEVEL 1 ROOM
FINISHES

PLAN SET:

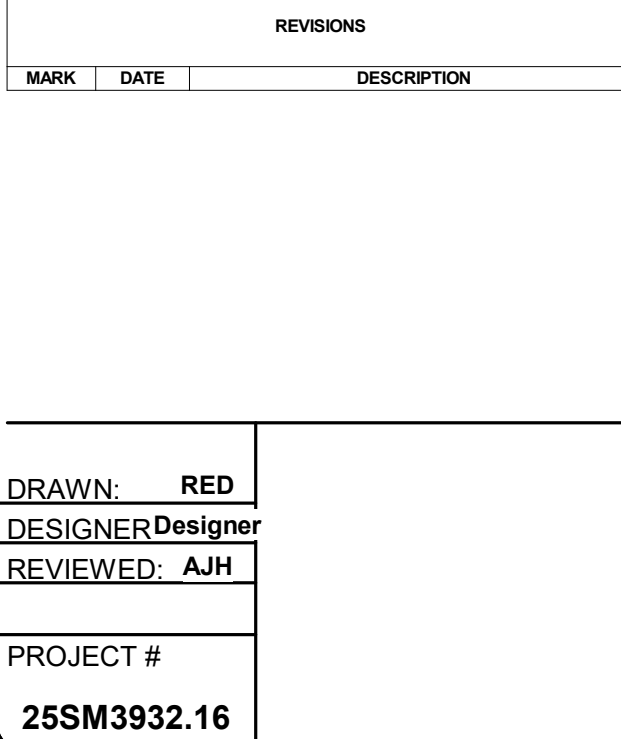
BID SET

SHEET

A1.8

ROOM FINISH SCHEDULE LEVEL 2

/10/2025 4:55:42 PM


$$3/16'' = 1'-0''$$

BAR SCALE MEASURES 1" ON A
FULL SIZE SHEET. ADJUST

PROJECT NAME:

JSSD OFFICE

PROJECT LOCATION:

**OLD HWY 40, HEBER
CITY UTAH**

SHEET TITLE:

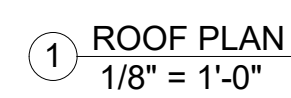
LEVEL 2 ROOM FINISHES

PLAN SET:

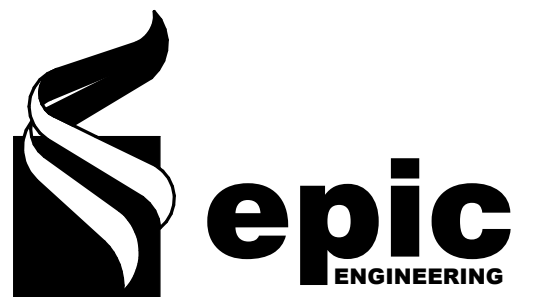
BID SET

SHEET

A1.9



3/10/2025 4:55:42 PM



| REVISIONS | | |
|-----------------------|------|-------------|
| MARK | DATE | DESCRIPTION |
| | | |
| DRAWN: RED | | |
| DESIGNER: EPIC | | |
| REVIEWED: AJH | | |
| PROJECT # | | |
| 25SM3932.16 | | |

JSSD OFFICE

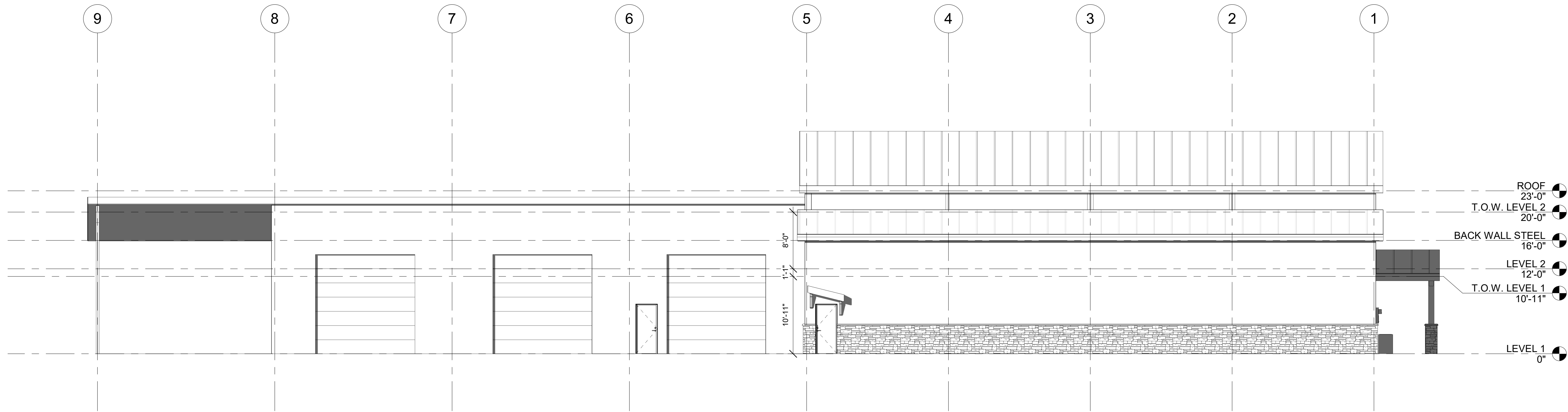
OLD HWY 40, HEBER
CITY UTAH

ROOF PLAN

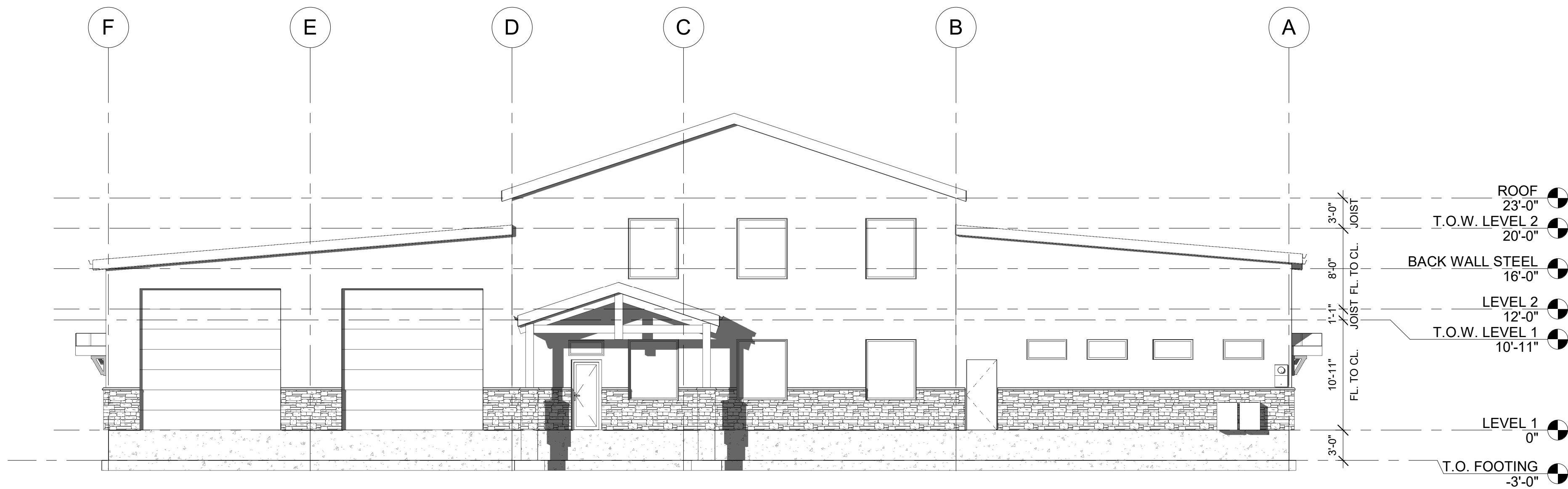
BID SET

A1.10

3/10/2025 4:55:46 PM



② SOUTH
1/8" = 1'-0"



③ EAST
1/8" = 1'-0"

CONSTRUCTION NOTES

DATE

3/10/2025 4:55:46 PM



REVISIONS

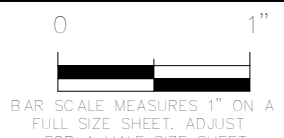
| MARK | DATE | DESCRIPTION |
|------|------|-------------|
| | | |
| | | |
| | | |

DRAWN: RED
DESIGNER: EPIC
REVIEWED: AJH

PROJECT #
25SM3932.16

SCALES

1/8" = 1'-0"



PROJECT NAME:

JSSD OFFICE

PROJECT LOCATION:

OLD HWY 40, HEBER
CITY UTAH

SHEET TITLE:

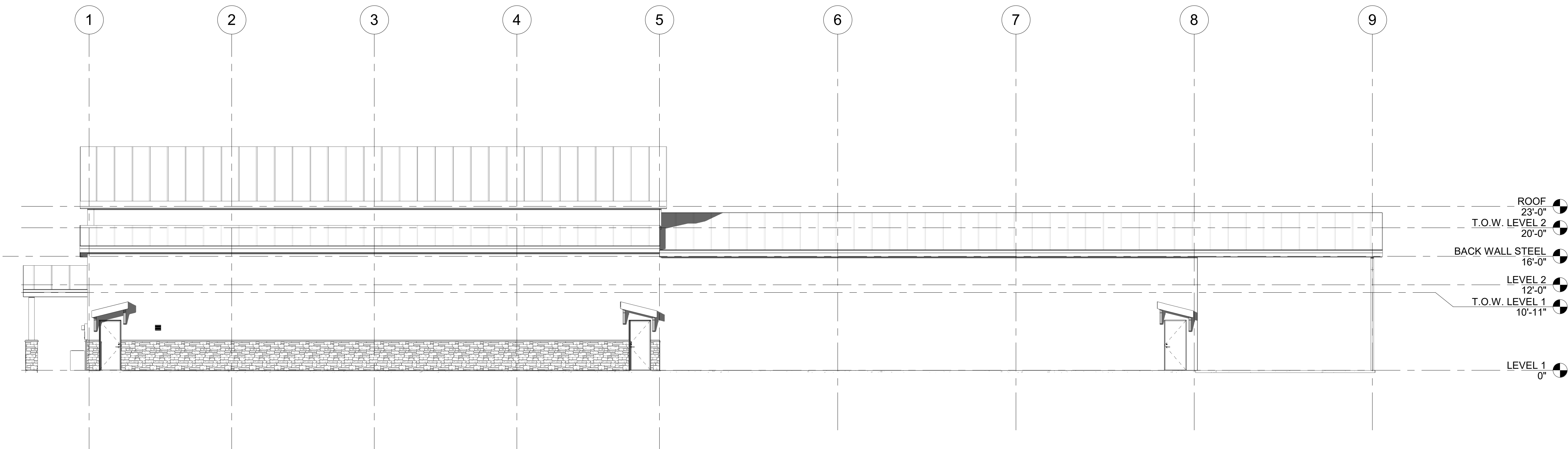
ELEVATIONS

PLAN SET:

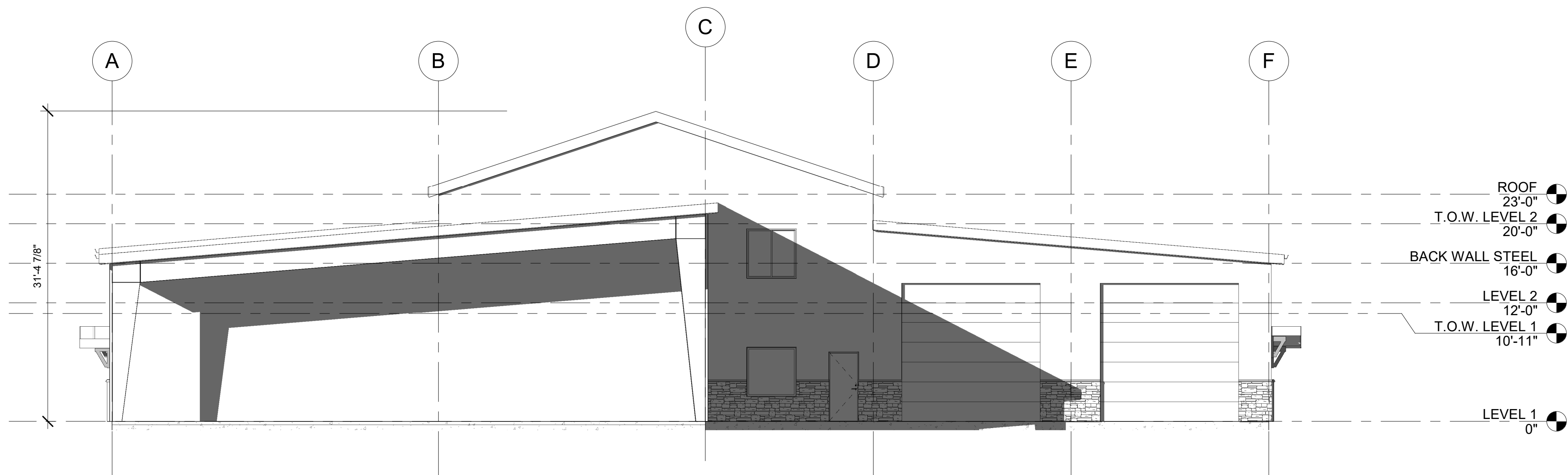
BID SET

SHEET

A2.1



1 NORTH
1/8" = 1'-0"



2 WEST
1/8" = 1'-0"

CONSTRUCTION NOTES

DATE

3/10/2025 4:55:50 PM



REVISIONS

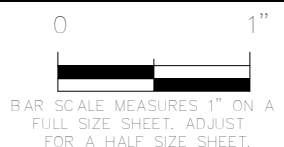
| MARK | DATE | DESCRIPTION |
|------|------|-------------|
| | | |
| | | |
| | | |

DRAWN: RED
DESIGNER: EPIC
REVIEWED: AJH

PROJECT #
25SM3932.16

SCALES

1/8" = 1'-0"



PROJECT NAME:

JSSD OFFICE

PROJECT LOCATION:

OLD HWY 40, HEBER
CITY UTAH

SHEET TITLE:

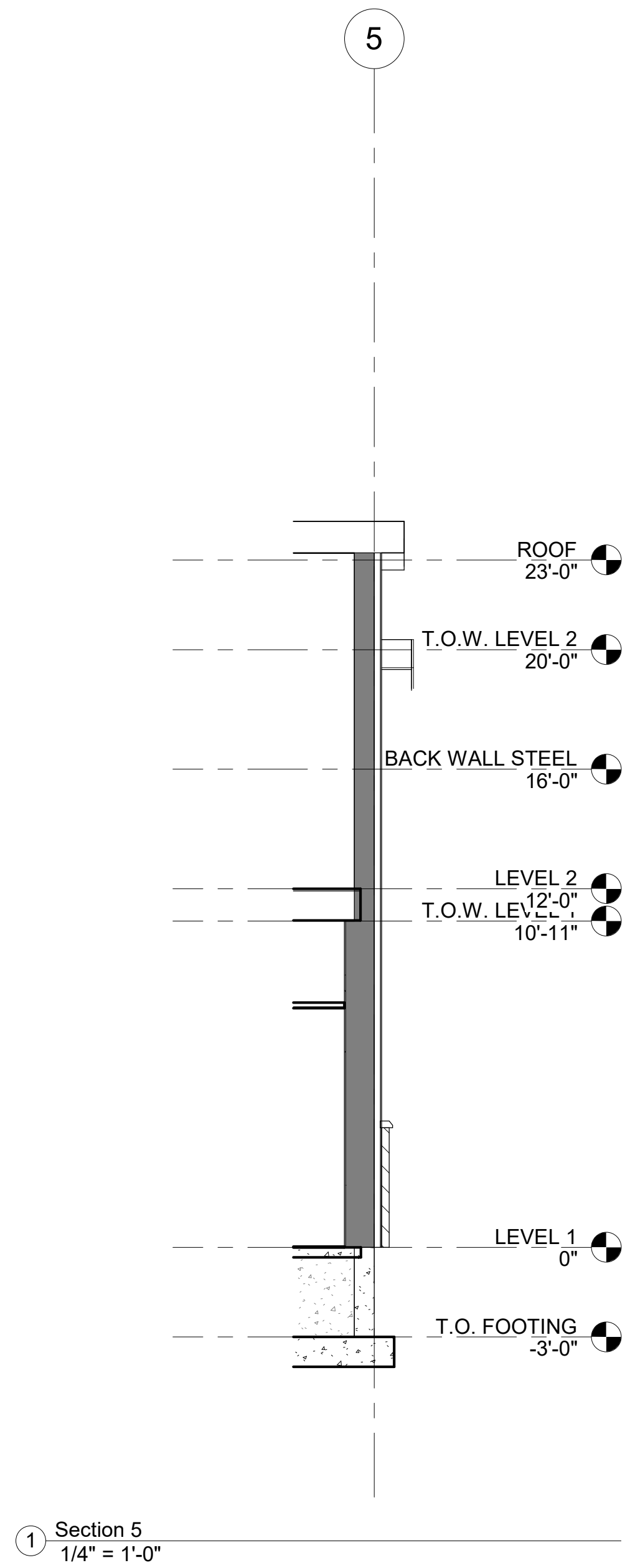
ELEVATIONS

PLAN SET:

BID SET

SHEET

A2.2




CONSTRUCTION NOTES

DATE _____

3/10/2025 4:55:50 PM



| REVISIONS | | |
|---|------|-------------|
| MARK | DATE | DESCRIPTION |
| | | |
| DRAWN: <u>Author</u> DESIGNER: <u>Designer</u> REVIEWED: <u>Checker</u> | | |
| PROJECT # | | |
| 25SM3932.16 | | |

| SCALES | |
|------------------------|--|
| $\frac{1}{4}" = 1'-0"$ |  <p>BAR SCALE MEASURES 1" ON A FULL SIZE SHEET. ADJUST FOR A HALF SIZE SHEET.</p> |

PROJECT NAME:

JSSD OFFICE

PROJECT LOCATION:

**OLD HWY 40, HEBER
CITY UTAH**

SHEET TITLE:

WALL SECTIONS

PLAN SET:**BID SET**

SHEET

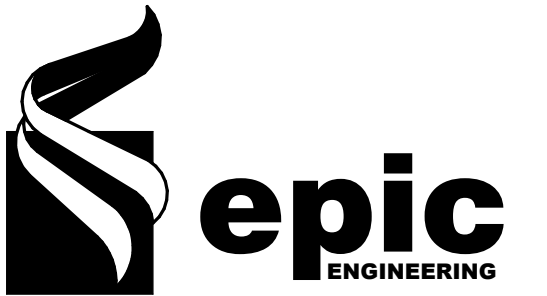
A3.2



CONSTRUCTION NOTES

DATE

3/10/2025 4:55:50 PM



REVISIONS

| MARK | DATE | DESCRIPTION |
|------|------|-------------|
|------|------|-------------|

DRAWN: Author
DESIGNER: Designer
REVIEWED: Checker

PROJECT #
25SM3932.16

SCALES

1/8" = 1'-0"

0 1'

BAR SCALE MEASURES 1" ON A FULL SIZE SHEET. ADJUST FULL SIZE SHEET. ADJUST

PROJECT NAME:

JSSD OFFICE

PROJECT LOCATION:

OLD HWY 40, HEBER CITY UTAH

SHEET TITLE:

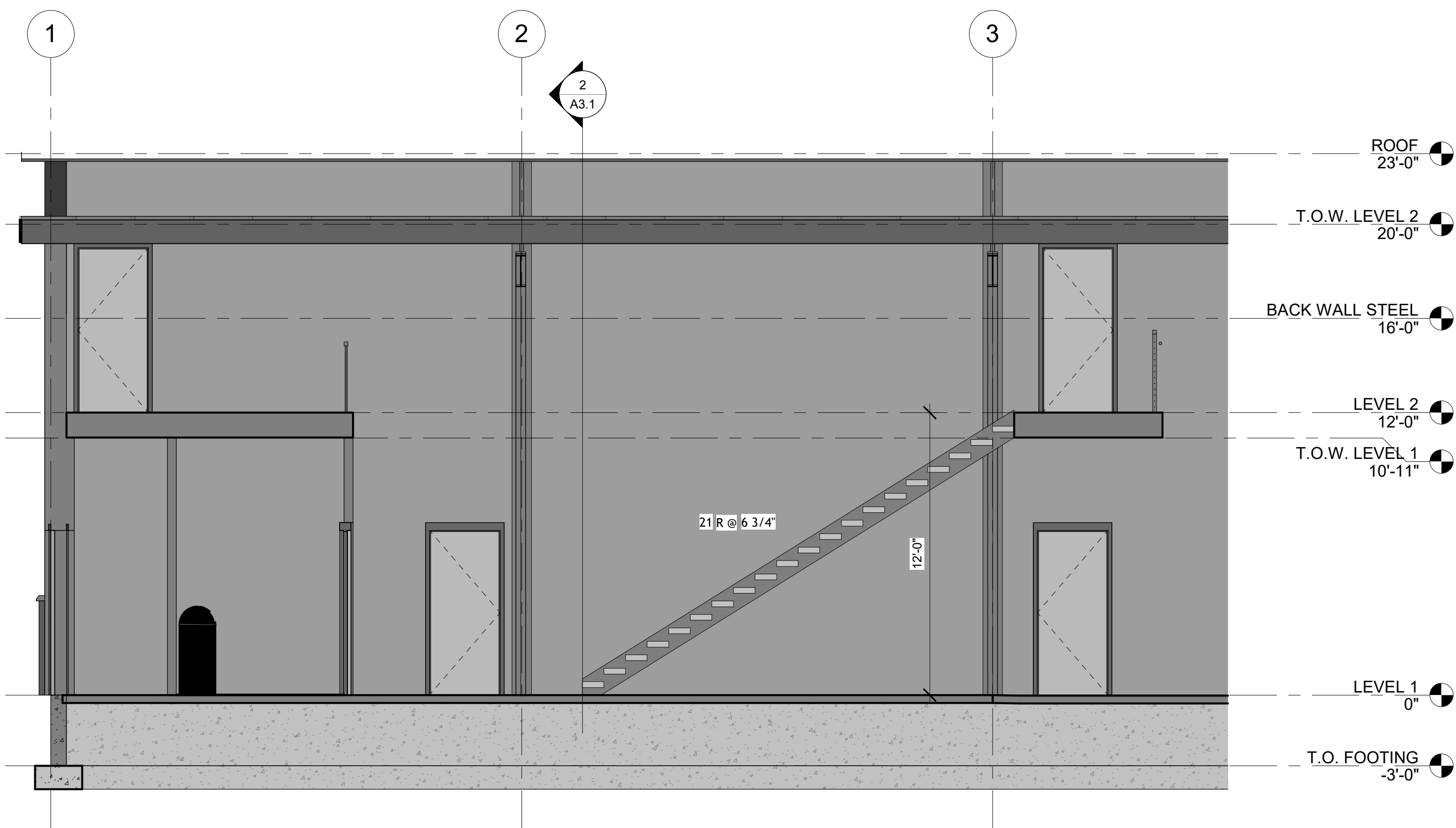
REFLECTED CEILING PLAN

PLAN SET:

BID SET

SHEET

A4.1



③ Section 4
1/4" = 1'-0"

CONSTRUCTION NOTES

DATE

3/10/2025 4:55:50 PM



REVISIONS

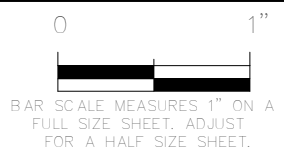
| MARK | DATE | DESCRIPTION |
|------|------|-------------|
| | | |
| | | |
| | | |

DRAWN: RED
DESIGNER: EPIC
REVIEWED: AJH

PROJECT #
25SM3932.16

SCALES

1/4" = 1'-0"



PROJECT NAME:

JSSD OFFICE

PROJECT LOCATION:

OLD HWY 40, HEBER
CITY UTAH

SHEET TITLE:

STAIRS AND RAILING
DETAILS

PLAN SET:

BID SET

SHEET

A5.1

| DOOR SCHEDULE | | | | | | | | | | | |
|---------------|------|------|-----------|----------|--------|--------|-----------|----------------|-------------|----------|--|
| LEVEL | MARK | ROOM | DOOR | | | | | HARDWARE GROUP | FIRE RATING | COMMENTS | |
| | | | DOOR TYPE | MATERIAL | WIDTH | HEIGHT | THICKNESS | | | | |
| LEVEL 1 | 29 | | 113 | | 3'-0" | 7'-0" | 2 1/2" | | EI30 | | |
| LEVEL 1 | 31 | | 113 | | 3'-0" | 7'-0" | 2 1/2" | | EI30 | | |
| LEVEL 1 | 32 | | | | 3'-0" | 7'-0" | | | | | |
| LEVEL 1 | 34 | | 69 | | 14'-0" | 14'-0" | 1 1/2" | | | | |
| LEVEL 1 | 35 | | 69 | | 14'-0" | 14'-0" | 1 1/2" | | | | |
| LEVEL 1 | 36 | | 113 | | 3'-0" | 7'-0" | 2 1/2" | | EI30 | | |
| LEVEL 1 | 37 | | 69 | | 14'-0" | 14'-0" | 1 1/2" | | | | |
| LEVEL 1 | 38 | | 69 | | 14'-0" | 14'-0" | 1 1/2" | | | | |
| LEVEL 1 | 48 | | 69 | | 14'-0" | 14'-0" | 1 1/2" | | | | |
| LEVEL 1 | 49 | | 69 | | 14'-0" | 14'-0" | 1 1/2" | | | | |
| LEVEL 1 | 50 | | 69 | | 14'-0" | 14'-0" | 1 1/2" | | | | |
| LEVEL 1 | 67 | | 59 | | 3'-0" | 7'-0" | 1 3/4" | | | | |
| LEVEL 1 | 68 | | 59 | | 3'-0" | 7'-0" | 1 3/4" | | | | |
| LEVEL 1 | 100a | | 148 | | 3'-0" | 7'-0" | | | | | |
| LEVEL 1 | 100b | | 58 | | 3'-0" | 7'-0" | 1 3/4" | | | | |
| LEVEL 1 | 100c | | 71 | | 3'-0" | 7'-0" | 1 3/4" | | | | |
| LEVEL 1 | 100d | | 68 | | 3'-0" | 7'-0" | 1 3/4" | | | | |
| LEVEL 1 | 101 | | 71 | | 3'-0" | 7'-0" | 1 3/4" | | | | |
| LEVEL 1 | 102 | | 71 | | 3'-0" | 7'-0" | 1 3/4" | | | | |
| LEVEL 1 | 103 | | 71 | | 3'-0" | 7'-0" | 1 3/4" | | | | |
| LEVEL 1 | 104 | | 71 | | 3'-0" | 7'-0" | 1 3/4" | | | | |
| LEVEL 1 | 105 | | 59 | | 3'-0" | 7'-0" | 1 3/4" | | | | |
| LEVEL 1 | 106a | | 71 | | 3'-0" | 7'-0" | 1 3/4" | | | | |
| LEVEL 1 | 106b | | 68 | | 3'-0" | 7'-0" | 1 3/4" | | | | |
| LEVEL 1 | 106c | | 68 | | 3'-0" | 7'-0" | 1 3/4" | | | | |
| LEVEL 1 | 107 | | 68 | | 3'-0" | 7'-0" | 1 3/4" | | | | |
| LEVEL 1 | 108a | | 71 | | 3'-0" | 7'-0" | 1 3/4" | | | | |
| LEVEL 1 | 108b | | 113 | | 3'-0" | 7'-0" | 2 1/2" | | EI30 | | |
| LEVEL 1 | 109 | | 71 | | 3'-0" | 7'-0" | 1 3/4" | | | | |
| LEVEL 1 | 112a | | 68 | | 3'-0" | 7'-0" | 1 3/4" | | | | |
| LEVEL 1 | 112b | | 113 | | 3'-0" | 7'-0" | 2 1/2" | | EI30 | | |
| LEVEL 1 | 113 | | 59 | | 3'-0" | 7'-0" | 1 3/4" | | | | |
| LEVEL 1 | 114 | | 59 | | 2'-6" | 7'-0" | 1 3/4" | | | | |
| LEVEL 1 | 115 | | 59 | | 2'-6" | 7'-0" | 1 3/4" | | | | |
| LEVEL 1 | 116 | | 59 | | 2'-6" | 7'-0" | 1 3/4" | | | | |
| LEVEL 1 | 117 | | 62 | | 3'-0" | 7'-0" | 1 3/4" | | | | |
| LEVEL 1 | 118 | | 59 | | 3'-0" | 7'-0" | 1 3/4" | | | | |
| LEVEL 1 | 119 | | 15 | | 6'-0" | 7'-0" | 2" | | | | |
| LEVEL 1 | 121a | | 113 | | 3'-0" | 7'-0" | 2 1/2" | | EI30 | | |
| LEVEL 1 | 121b | | 70 | | 22'-0" | 14'-0" | 1 1/2" | | | | |
| LEVEL 1 | 122 | | 1 | | 3'-0" | 7'-0" | 2" | | | | |
| LEVEL 2 | D201 | | 68 | | 3'-0" | 7'-0" | 1 3/4" | | | | |
| LEVEL 2 | D202 | | 5 | | 2'-6" | 6'-8" | 2" | | | | |
| LEVEL 2 | D203 | | 5 | | 2'-6" | 6'-8" | 2" | | | | |
| LEVEL 2 | D204 | | 5 | | 2'-6" | 6'-8" | 2" | | | | |
| LEVEL 2 | D206 | | 68 | | 3'-0" | 7'-0" | 1 3/4" | | | | |

| Door Handle |
|------------------------|
| Key Name |
| CRASH BAR / DOOR LEVER |
| DOOR LEVER |
| GATE LATCH |
| PULL AND PUSH PLATES |

CONSTRUCTION NOTES

DATE

3/10/2025 4:55:51 PM



REVISIONS

| MARK | DATE | DESCRIPTION |
|------|------|-------------|
| | | |
| | | |
| | | |
| | | |

DRAWN: EPIC

DESIGNER: EPIC

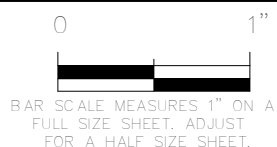
REVIEWED: EPIC

PROJECT #

25SM3932.16

SCALES

As indicated



PROJECT NAME:

JSSD OFFICE

PROJECT LOCATION:

OLD HWY 40, HEBER CITY UTAH

SHEET TITLE:

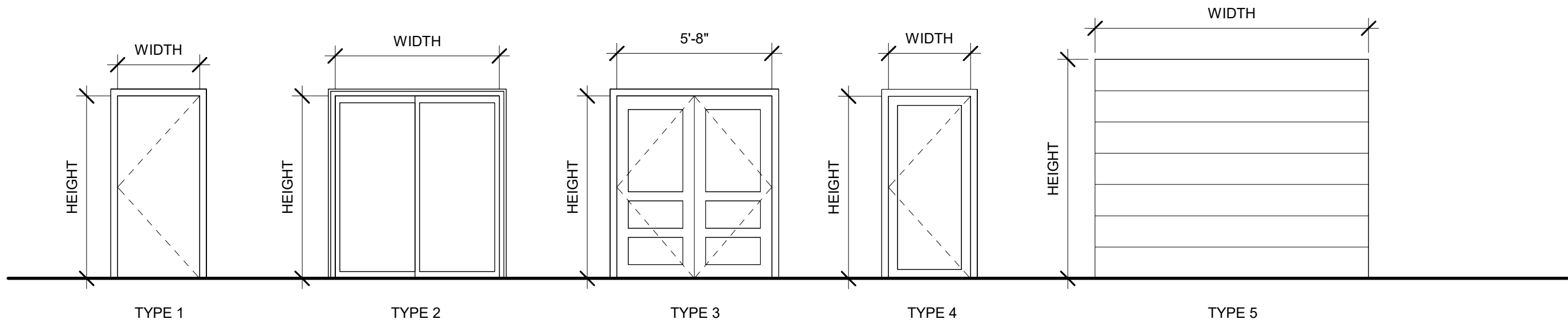
ARCHITECTURAL SCHEDULES

PLAN SET:

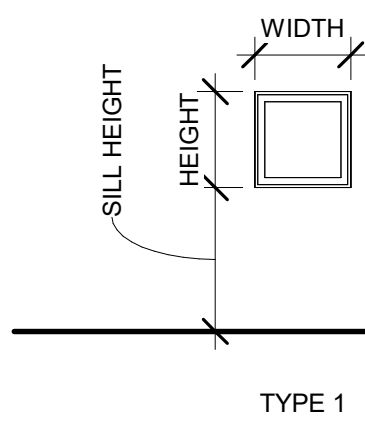
BID SET

SHEET

A7.1



| WINDOW SCHEDULE | | | | | | | | | |
|-----------------|-------|------|--------|-------|-------------|----------|--------|---------|---------|
| MARK | COUNT | TYPE | HEIGHT | WIDTH | SILL HEIGHT | FRAMES | | GENERAL | REMARKS |
| | | | | | | MATERIAL | FINISH | | |



CEILING TYPES

- C-1 5/8" GYP. BD. ATTACHED TO UNDERSIDE OF FRAMING
- C-2 24" X 48" ACCOUSTICAL CEILING TILES
- C-3 24" X 24" ACCOUSTICAL CEILING TILES

CEILING TYPES
N.T.S.

Door Key

| Key Name | Door Key Explanation |
|------------------|---|
| CLASSROOM LOCK | DEADLOCKING LATCH BOLT BY LEVERS. OUTSIDE LEVER IS LOCKED BY KEY IN OUTSIDE LEVER. INSIDE LEVER IS ALWAYS FREE. |
| CORRIDOR LOCK | DEADLOCKING LATCH BOLT BY LEVERS EXCEPT WHEN LOCKED BY PUSH BUTTON IN INSIDE LEVER. KEY IN OUTSIDE LEVER LOCKS OR UNLOCKS OUTSIDE LEVER AND RELEASES BUTTON. CLOSING DOOR RELEASES PUSH BUTTON. INSIDE LEVER ALWAYS FREE. |
| DUMMY TRIM | SINGLE TRIM-SURFACE MOUNTED RIGID LEVER. |
| ENTRY LOCK | PUSH BUTTON LOCKING. BUTTON ON INSIDE LOCKS OUTSIDE LEVER UNTIL UNLOCKED BY KEY OR BY ROTATING INSIDE LEVER. INSIDE LEVER ALWAYS FREE. DEADLOCKING LATCH BOLT. |
| KEYED | |
| N/A | |
| OFFICE LOCK | TURN/PUSH BUTTON LOCKING. PUSHING AND TURNING BUTTON LOCKS OUTSIDE LEVER REQUIRING USE OF KEY UNTIL BUTTON IS MANUALLY UNLOCKED. INSIDE LEVER ALWAYS FREE. DEADLOCKING LATCH BOLT. |
| PASSAGE | LATCH BOLT BY LEVERS AT ALL TIMES. |
| PRIVACY | LATCH BOLT BY LEVERS. OUTSIDE LEVER LOCKED BY PUSH BUTTON IN INSIDE LEVER. ROTATING INSIDE LEVER OR CLOSING DOOR RELEASES PUSH BUTTON. EMERGENCY RELEASE IN OUTSIDE LEVER UNLOCKS DOOR. |
| RFID CARD READER | |
| STOREROOM LOCK | DEADLOCKING LATCH BOLT BY LEVER INSIDE OR KEY OUTSIDE. OUTSIDE LEVER IS INOPERABLE. INSIDE LEVER ALWAYS FREE. |

SIGN SCHEDULE

| MARK | COUNT | TEXT | WIDTH | HEIGHT | MOUNT | REMARKS |
|------|-------|-------------|--------|--------|-------|---------|
| 1 | 1 | | 9" | 9" | 1 | |
| 2 | 1 | RESTROOM | 9" | 9" | 1 | |
| 3 | 1 | RESTROOM | 9" | 9" | 1 | |
| 4 | 1 | RESTROOM | 9" | 9" | 1 | |
| 5 | 1 | MEN | 6" | 9" | 1 | |
| 6 | 1 | MEN | 6" | 9" | 1 | |
| 7 | 1 | WOMEN | 6" | 9" | 1 | |
| 8 | 1 | WOMEN | 6" | 9" | 1 | |
| 9 | 1 | ROOM NUMBER | VARIES | 4" | 1 | |
| 10 | 1 | ROOM NAME | VARIES | 4" | 1 | |

- 1
- 2
- 3
- 4
- 5
- 6
- 7
- 8
- 9
- 10

