

Bigwater, Utah Annexation Policy Plan

Introduction

This Annexation Policy Plan has been prepared in accordance with UCA 10-4-401.5 (2024), ensuring that all future annexation petitions are evaluated and processed in a manner that is consistent with the requirements of state law. The plan serves as a guiding document for the municipality's decision-making process concerning annexation requests, aiming to promote orderly growth and development that aligns with the community's values and long-term vision.

Development of Annexation Policy Plan

In developing, considering, and adopting this Annexation Policy Plan, the planning commission and town council considered the following:

1. Reviewing of gaps or overlaps within the expansion area with other jurisdictions
2. Consideration of population growth of the town for the next 20 years
3. Anticipation of current and future projected costs of infrastructure, urban services, and public facilities
4. Elements of Bigwater's General Plan
5. Consideration of adjacent recreation, state and federal lands
6. And, the elements outlined in *Guiding Criteria for Annexation*

Proposed Annexation Area

The Town of Bigwater will consider all future annexations if they are included within the boundaries of the accompanying Annexation Policy Map (Exhibit A). This map defines the limits of the land considered for annexation. It is important to note that this plan will not affect any areas identified within the map that are not subject to annexation by municipalities under state or federal law. These exempt areas will remain outside the jurisdiction of the Town of Bigwater, in compliance with all relevant legal restrictions.

Justification for Exclusions

In developing this annexation plan, certain areas containing urban development, or not subject to annexation by state or federal law may be excluded from the proposed expansion area. These exclusions are justified by the need to prevent overlapping jurisdictions; to avoid the potential for conflicts with existing urban developments that may already be under the service provisions of special districts or other governmental entities; or the lack of allowable jurisdiction. This careful consideration ensures that annexation will not disrupt existing service

arrangements or impose unnecessary administrative burdens on the Town of Bigwater, thereby maintaining an orderly and manageable expansion process.

Guiding Criteria for Annexation

The decision to grant or deny future annexation petitions will be guided by specific criteria designed to ensure that annexations benefit the community. These criteria include:

1. **Character of the Community**

The municipality will consider whether the proposed annexation aligns with the community's existing character, including land use patterns, zoning ordinances, and the overall aesthetic and cultural identity of the area. Annexations should contribute positively to the community's unique character and not disrupt the established way of life.

2. **Need for Municipal Services**

The need for municipal services in both developed and undeveloped unincorporated areas will be a crucial consideration. The municipality will assess whether the area proposed for annexation requires essential services such as water, sewer, public safety, and road maintenance and whether the municipality is equipped to provide these services efficiently and effectively.

3. **Municipal Plans for Extension of Services**

The municipality's plans for extending municipal services will be reviewed to determine the feasibility of doing so in the annexed area. This includes evaluating existing infrastructure, capacity, and the municipality's ability to expand services without negatively impacting current residents.

4. **Financing of Services**

The plan will include assessing how the extension of services to the annexed area will be financed. This may involve reviewing potential funding sources, such as taxes, fees, or bonds, and ensuring that the financial burden is distributed fairly among new and existing residents.

5. **Estimate of Tax Consequences**

An estimate of the tax consequences for residents currently within the municipal boundaries and those in the proposed expansion area will be provided. This includes evaluating potential changes in property taxes, service fees, and other financial impacts that annexation may have on all residents.

6. **Interests of All Affected Entities**

The interests of all affected entities, including neighboring municipalities, special service districts, and other government agencies, will be considered. The municipality will seek to ensure that annexation decisions do not negatively impact these entities and that cooperative solutions are explored when conflicts arise.

By adhering to these guiding criteria, the municipality aims to make annexation decisions that foster growth, enhance residents' quality of life, and preserve the integrity of the community.

Statement to Affected Entities

[to be added after hearing process]

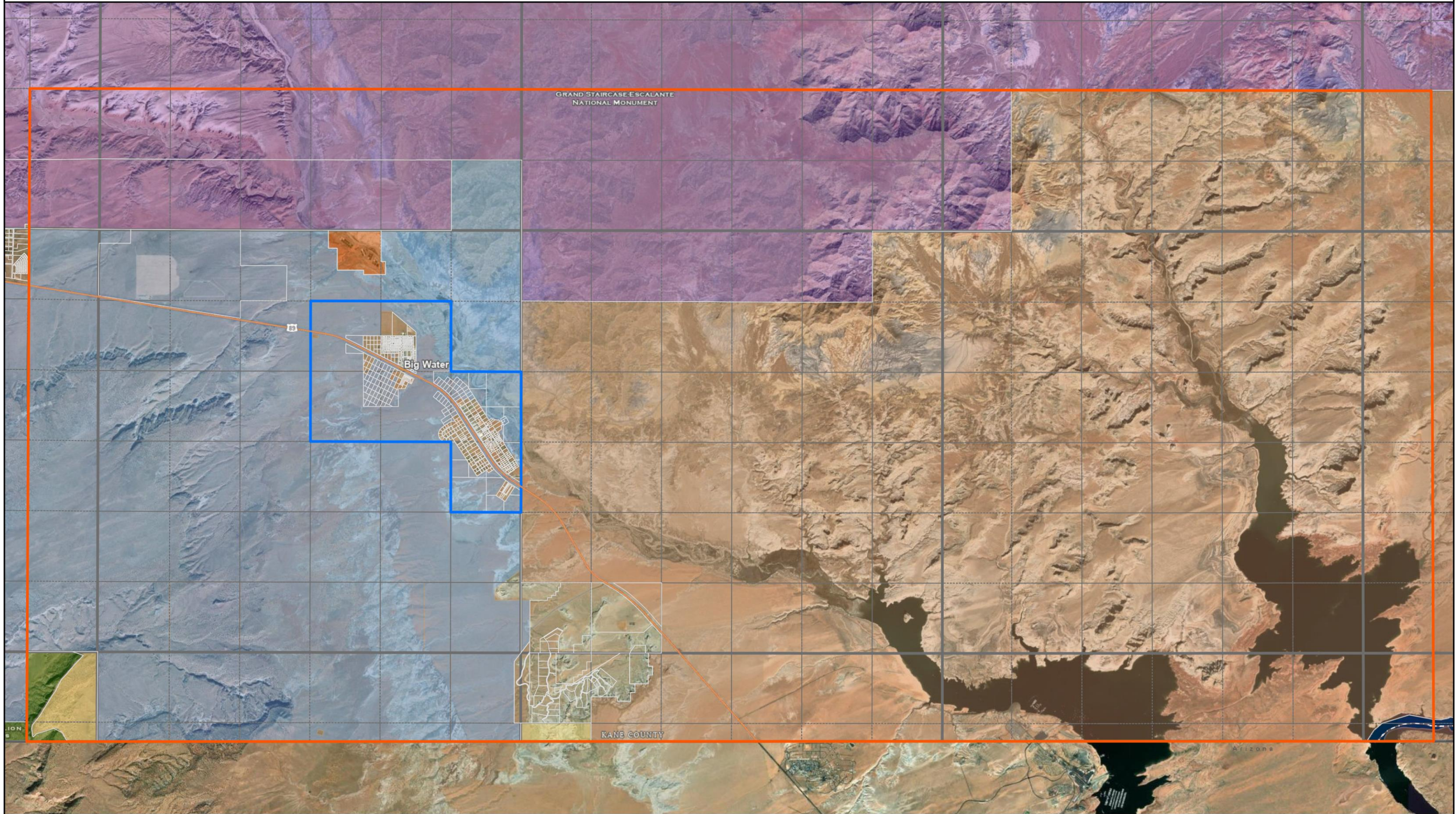
Annexation Petition Process

[to be added]

Exhibit A Annexation Plan

Policy Map

Big Water Town Annexation Policy Plan Map



- | | | | | |
|-------------------------------|---------------------------|--------------------------|----------------------------------------|-----------------|
| Kane County Parcels | Private | National Monument | State Trust Lands | PLSS Sections |
| Big Water Municipality | Tribal Lands | National Recreation Area | State Sovereign Land | PLSS Townships |
| Big Water Annexation Boundary | Bureau of Land Management | National Wilderness Area | State Wildlife Reserve/Management Area | Date: 8/12/2024 |

