

FY 24 Surface Group Update

September 19, 2024
Trust Lands Board of Trustees



1

Surface Revenue Summary

- Strong sales & telecom revenues
- Other leasing programs holding steady with modest growth
- Easements & ROEs are highly variable year to year, depends on what comes through the door
- Grazing revenues are collected toward end of FY, revenue will vary depending on timing of payment receipts
- Timber sales indicative of poor market conditions, looking up for FY25

	FY 23	FY 24	Change
Sales	\$4,211,373	\$7,565,737	80%
Telecom Leasing	\$1,265,111	\$1,588,247	26%
Easements	\$332,923	\$414,872	25%
Governmental Leasing	\$574,190	\$637,828	11%
Commercial Leasing	\$2,419,246	\$2,663,749	10%
Agricultural Leasing	\$157,516	\$162,621	3%
Residential Leasing	\$78,899	\$81,337	3%
Industrial Leasing	\$2,835,992	\$2,818,722	(1%)
Grazing	\$1,416,372	\$1,331,093	(6%)
Right of Entry	\$320,178	\$213,348	(33%)
Timber Sales	\$57,422	\$12,897	(78%)
TOTAL	\$13,669,222	\$17,490,452	28%

2

Land Sales



North Kolob Parcel

- Sale properties carefully vetted by all business groups
- Three online auctions
 - 13 properties sold
 - 1,868.45 acres
- Anderson Hollow (Duchesne) – 31 bids
 - \$325,000 minimum price
 - \$605,000 sale price
- Co-op Creek (Iron) – 6 bids
 - \$2,000,000 minimum price
 - \$2,510,000 sale price
- North Kolob (Washington) – 27 bids
 - \$350,000 minimum price
 - \$620,000 sale price

3

Telecom Leasing

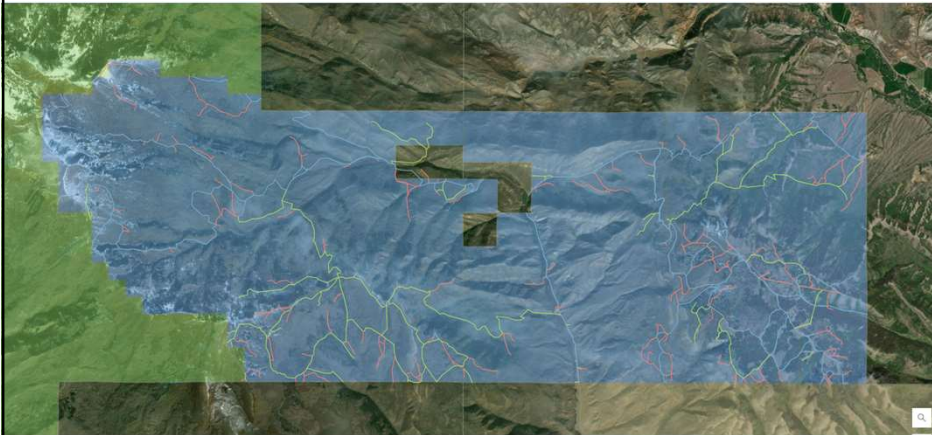
- Focus on identifying co-locators and making sure sublease rents are being paid
- Engaged audit group to assist
- Identified 8 leases with unpaid sublease/base rentals – some going back several years
- Recovered **\$161,570** in unpaid rents

Thanks to Russ Cazier and the Audit Group!



4

Tabby Mountain Travel Management



- Route inventory (2023)
- Standardized route evaluation rationale
- Route designation categories
 - Open, Closed, Limited
- Internal route evaluations (2023-24)
- Review/coordination with DWR and Duchesne/Wasatch Counties
- Plan implementation (2024-25)



5



Plan Implementation

- Utilization of Dedicated Hunter Program volunteers
- Donation of time & equipment (trucks, trailers, UTVs, skid loader, hand tools, power tools, etc.)
- Built 14 structures to date, installed several signs
- Closed about 10 roads so far, lots more to do...
- *Thanks to Ethan Hallows for spearheading this effort!*

6

Law Enforcement Overtime Shifts

Program Summary

- Weekend overtime shifts
- July 1 – October 30
- Targeted enforcement locations
- Tabby Mtn, Lake Mtn, La Sal Mtns, Phil Pico, Book Cliffs, Moab area, Bluff, Warner Valley, Tonaquint, Wildland seed areas
- Provided informational flyers, vehicle decals

Overall Results

- 119 shifts
- 1,842 contacts
- 67 citations
- OHV violations, 14-day camping notices
- Many issues report to TLA law enforcement
- Program cost: **\$69,772**
- Paid from Stewardship & OHV Funds



Division of State Parks

- 34 shifts
- 811 contacts
- 38 citations



Division of Wildlife Resources

- 50 shifts
- 901 contacts
- 29 citations



Office of the Attorney General

- 35 shifts
- 130 contacts
- 0 citations

Thanks to Brent Kasza for administering the program!

7

Dingell Exchange Status Report

- Base property appraisals have been completed, reviewed, and approved by BLM/TLA
- Value equalization appraisals underway
- Timing of appraisals/Phase 1 ESAs has been tricky
- BLM decision package under review in Washington D.C.
- Record of Decision to be signed upon completion of equalization appraisals
- 45 day protest period
- Closing anticipated around beginning of 2025



8