



**Public Safety Bond**  
**[slco.to/bond](http://slco.to/bond)**

# Public Safety Bond

A product of extensive countywide collaboration, bipartisan input, and a critical element of the County's Systemic Reform Plan.

- **Balances** public safety and human services needs.
- **Realigns** and sets the Salt Lake County Jail and Human Services systems for success.
- **Creates** structured and secure environments to reduce repeat offenses and put people on a path towards self-reliance.
- **Funds** a critical missing element of the broader system.
- **Replaces** outdated infrastructure and treatment programs.



# Quick Overview: Human Services, Homelessness, and Criminal Justice Action Plan

**Bi-partisan partnerships** between Governor Cox, key legislators, the business community, municipal leaders, and others in Salt Lake County are at an **all time high**.

We are collectively moving forward with **PURPOSE + PARTNERSHIP + URGENCY**

To achieve a shared vision:

***That homelessness is brief, rare, and non-recurring.***

Systems were mapped, service gaps and barriers identified, other successes evaluated, and costs analyzed.



# System Gaps & Barriers



## Supportive Housing Needs

An estimated 1,000 people are living unsheltered in Salt Lake County at any given time, requiring varying levels of intervention and a stable living environment to put them on the path towards self-reliance.

**300** Intensive | **300** Moderate | **400** Light



## Criminal Justice and Law Enforcement Challenges

America's drug crisis has led to increased substance use and criminal activity on our streets.

Jail is the largest mental health and substance use treatment facility in the County- at great expense to taxpayers. 50+ inmates are unhoused and have a severe mental illness. Jail stays are 3.5x longer for people experiencing homelessness.

**\$136** daily cost per inmate

**25%** inmates unhoused

**1,200** unstably housed on probation & pre-trial



## Systemic Gaps

**Workforce** | Insufficient behavioral healthcare workforce.

**Health and Wellness Care** | Insufficient coordinated healthcare system for unsheltered population.

**Mental Health Services** | Insufficient mental health capacity for unsheltered in the community and in the jail.

**Integrated Data System** | To better serve clients and evaluate system outcomes.

# Salt Lake County Action Plan

## Solutions:



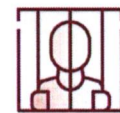
**Expand Housing Unit  
Availability**



**Build Justice & Accountability  
Center**



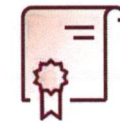
**Enforcement and  
Criminal Justice  
Reform**



**Expand and Improve County  
Jail Mental Health Access**



**Address Systemic  
Gaps**



**Support Drug  
Enforcement (DEA)  
Task Force**



# Public Safety Bond

## Addresses Vital Parts of the Action Plan



Address Systemic Gaps



Expand Housing Units



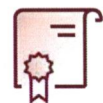
**Build Justice & Accountability Center**



Enforcement and Criminal Justice Reform



**Improve & Expand Jail + Mental Health Unit**



Support Drug Enforcement (DEA) Task Force

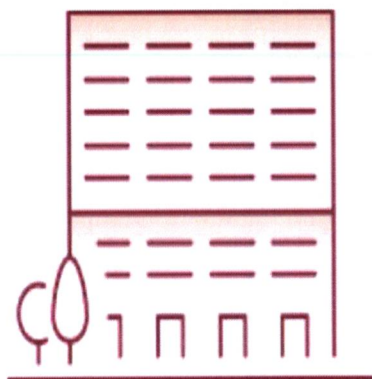


**Public Safety Bond is a catalyst for essential parts of the systemic plan:**

- Justice and Accountability Center; including structured space for:
  - Mental Health and Substance Use Services
  - Job Training & Employment Resources
  - Connection to Housing Opportunities
- Combine Two County Jails; including:
  - Updated and Increased Mental Health Units

# Justice & Accountability Center

Supervised and secure alternative for low-level offenders with resources to reduce repeat offenses and support people's path to self-reliance.



## Wrap-Around Stabilization Units

- Dedicated Case Workers
- Job Training and Employment Services
- Mental Health and Substance Use Disorder Treatment
- Connection to Housing Options

## Behavioral Health Stabilization Units

Intensive mental health/substance use treatment unit to prepare people to transition to the Wrap-Around space.

**Approximately \$75/day (per occupant)**

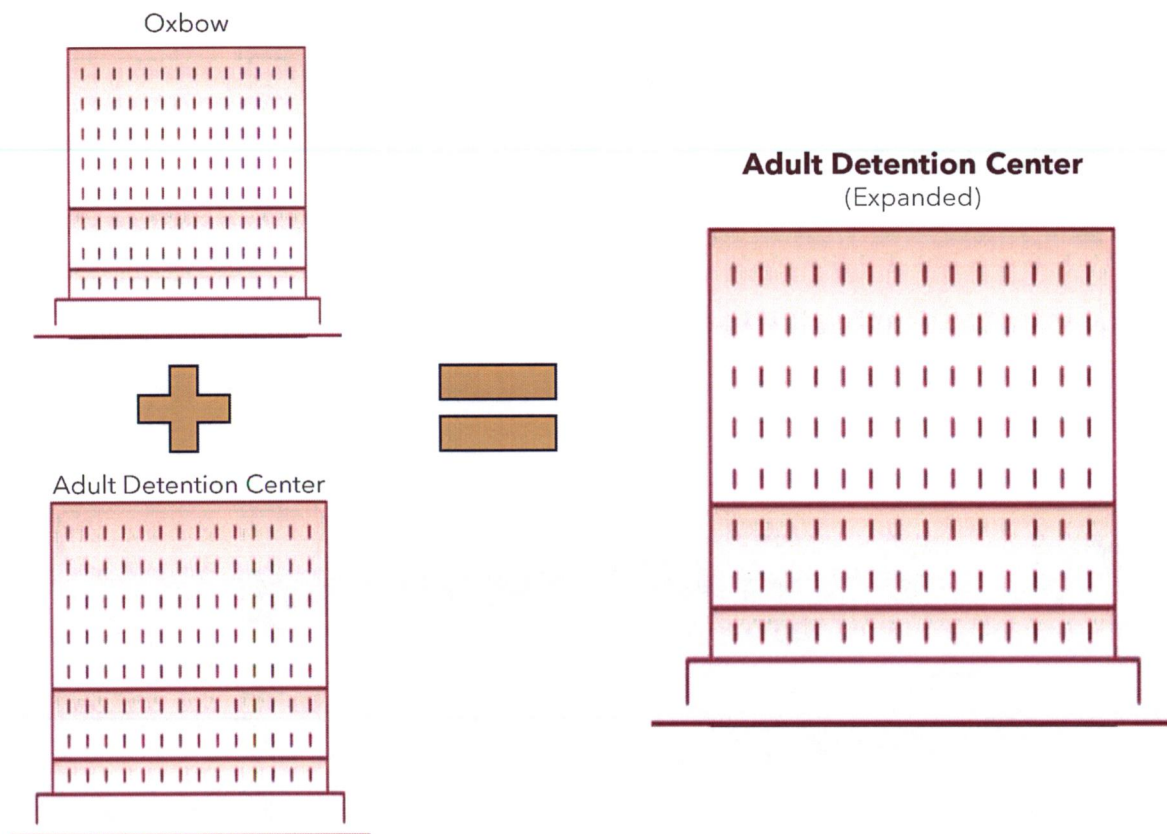
**\$60/day less than jail**

**\$22,500/yr less than jail**

**\$6.8M less per year than jail at full capacity**

# County Jail System Revamp

Combine the two county jails; increase capacity, expand mental health unit, and build stepdown unit



## **General Population (Includes SUD Treatment Unit)**

Increased general population; built for future growth as well as improved substance use disorder treatment unit.

## **Mental Health Unit**

Expanded and modernized behavioral health unit to better serve population.

## **Community Reentry Stepdown Unit**

Transitional unit to help prepare inmates to rejoin society on a path towards self-reliance.

## **Total Newly Constructed Beds = 812**

Rebuild Oxbow Capacity (552 beds)  
Renovate and enhance mental health pod (160 beds)  
Build Reentry Stepdown Unit (100 beds)



# Public Safety Bond

## Quick FAQs

### Justice & Accountability Center

Cost-reducing diversionary and stabilization space for low-level offenders and those exiting the jail in need of a structured environment with resources to put them on a path towards self-reliance

- Connected to the Criminal Justice System
- 25% exiting jail lack stable environment
- 1,200 on probation or pretrial lack stable environment
- Supervised and secure treatment facility
- Drug-free environment
- Resources to reduce repeat offenses
- Approximately \$75/day (per occupant)
  - \$60/day less than jail
  - \$22,500/yr less than jail
  - \$6.8M less per year than jail at full capacity

### County Jail System Revamp

Combine two county jails to improve efficiencies and reduce operational costs. Build additional capacity, including expanded mental health space and a transition to prepare those exiting jail to reenter the community

- Oxbow near end of lifespan (half-century old)
- \$90M+ would only extend life a maximum of 10 – 15 years
- No additional capacity constructed since 2001, while population has grown by more than 300,000
- Population growth requires additional space
- Jail system stricken with logistical and operational challenges
- Construction of Community Reentry Stepdown Unit
- Transition back to community on a path towards self-reliance
- Additional Law Enforcement and Public Safety Capital Investments
- Adult Detention Center maintenance and improvements
- Sheriff's Office Bureau maintenance and improvements



# Total Capital Cost

General Obligation Bond

FACILITY	COST
Maintenance & Improvements ADC/SOB	90,000,000
Jail Expansion + Improvements	427,000,000
Justice & Accountability Center	100,000,000
Sale of Oxbow Property	(20,000,000)
Oxbow Demolition	10,000,000
County Set Aside	(100,000,000)
<b>TOTAL BOND</b>	<b>507,000,000</b>

IMPACT	MONTHLY	ANNUAL
Residence	<b>\$4.91</b>	\$58.94
Business	<b>\$8.93</b>	\$107.16

*Based on Avg. Property Value of \$602,000*

## BOND LANGUAGE

Shall Salt Lake County, Utah, be authorized to issue general obligation bonds in an amount not to exceed \$507,000,000 and to mature in no more than twenty-one (21) years from the date or dates of issuance of such bonds for the purpose of financing:

- 1) **Acquiring and constructing a Justice and Accountability Center** primarily for people who have had multiple encounters with law enforcement and who need a supervised and structured environment with resources to reduce repeat offenses, including for mental health and substance abuse treatment, job related services, and connection to housing opportunities;
- 2) **Combining the two county jails into one and increasing capacity, including an expanded mental health unit and a transitional unit to prepare those exiting the jail to reenter the community;**
- 3) **Completing necessary capital maintenance on existing correctional facilities; and**
- 4) **Acquiring, constructing, expanding, equipping, renovating and remodeling related County public safety facilities and ancillary buildings** under the charge of Salt Lake County, Utah; and, to the extent necessary, for providing moneys for the refunding, at or prior to the maturity thereof, of general obligation bonds of the County authorized hereunder or heretofore issued and now outstanding?





# Questions?

More info: [slco.to/bond](https://slco.to/bond)

Additional info/follow up:

**Brad Townley**

385.202.6067

[btownley@saltlakecounty.gov](mailto:btownley@saltlakecounty.gov)



**Thank you!**