



South Salt Lake City Council Work Meeting Agenda

Public notice is hereby given that the **South Salt Lake City Council** will hold a Work Meeting on **Wednesday, July 31, 2024** in the City Council Chambers, 220 East Morris Avenue, Suite 200, commencing at **6:15 p.m.**, or as soon thereafter as possible.

To watch the meeting live click the link below to join:

<https://zoom.us/j/93438486912>

Watch recorded City Council meetings at: [youtube.com/@SouthSaltLakeCity](https://www.youtube.com/@SouthSaltLakeCity)

Conducting: Council Chair Bynum

CITY COUNCIL

MEMBERS:

LEANNE HUFF
COREY THOMAS
SHARLA BYNUM
NICK MITCHELL
PAUL SANCHEZ
NATALIE PINKNEY
CLARISSA WILLIAMS

Matters for Discussion:

1. Parks Master Plan Presentation Anthony Biamont
2. An Ordinance of the South Salt Lake City Council Amending Sections 15.01.200 and 15.01.210 of the South Salt Lake City Municipal Code to Modify Fees Relating to the City's Culinary Water Impact Fee and Calculation in South Salt Lake City Hansen, Allen & Luce
3. An Ordinance of the South Salt Lake City Council Amending Section 3.11.040(B) of the South Salt Lake City Municipal Code to Modify Fees Relating to Culinary Impact Fees in South Salt Lake City Hansen, Allen & Luce

Adjourn

Posted July 26, 2024

Those needing auxiliary communicative aids or other services for this meeting should contact Ariel Andrus at 801-483-6019, giving at least 24 hours' notice.

In accordance with State Statute and Council Policy, one or more Council Members may be connected electronically.

Have a question or concern? Call the connect line 801-464-6757 or email connect@sslc.gov

ARIEL ANDRUS
CITY RECORDER
220 E MORRIS AVE
SUITE 200
SOUTH SALT LAKE
UTAH
84115
P 801.483.6019
F 801.464.6770
SSLC.GOV

**CITY OF SOUTH SALT LAKE
CITY COUNCIL WORK MEETING**

COUNCIL MEETING Wednesday July 31, 2024
6:15 p.m.

CITY OFFICES 220 East Morris Avenue
South Salt Lake, Utah 84115

PRESIDING: Council Chair Sharla Bynum

CONDUCTING: Council Chair Sharla Bynum

COUNCIL MEMBERS PRESENT:
Sharla Bynum, LeAnne Huff, Corey Thomas, Nick Mitchell,
Paul Sanchez (Zoom), Clarissa Williams, and Natalie Pinkney

COUNCIL MEMBERS EXCUSED:
None

STAFF PRESENT:
Mayor Cherie Wood
Josh Collins, City Attorney
Danielle Croyle, Police Chief
Terry Addison, Fire Chief
Jonathan Weidenhamer, Community & Economic Development Director
Ariel Andrus, City Recorder
Sara Ramirez, Deputy City Recorder
Jason Taylor, Water Division Manager
Anthony Biamont, Parks Project Manager
Jared Christensen, Deputy Fire Chief

Matters for Discussion

1. Parks Master Plan Presentation

Parks Project Manager, Anthony Biamont, spoke about the City's Parks Master Plan and where the process will go from this point.

Currently, the newest Kaboom playground is being built over at the South Salt Lake Community Center in partnership with Utah Community Action and Discover Financial Group.

Mr. Biamont reviewed the City's vision and values when it comes to parks and green spaces, and the recommendations that the Master Plan gives. They have compiled all the content from the survey, community feedback at pop-up events throughout the City, the advisory committee, and have settled on the City's priorities. The finalization will come in August and the final draft will be adopted by the Council.

The purpose of the City's Parks Plan is to create a decades' long-term vision for the City's parks

system. Staff want to prioritize what people want, how people use parks, and how the plan can accommodate the changing needs and trends over time.

There are also important issues like accessibility, inclusivity, sustainability, and potential partnerships with community organizations and stakeholders.

The priority programs that the City wants to make happen are regular community events, food truck rallies, movie nights, art and cultural events, bike rides, outdoor wellness and fitness classes, gardening, etc.

New amenities also come under the priority projects and include things like splash pads, skate park, volleyball, pavilions, etc.

The proposed Parks Plan identifies the target areas on a map that shows areas in the City where they want to improve access to parks by using a 10-minute walking radius as a standard.

The plan also identifies potential funding sources that range from the City's own General Fund, Park Impact Fees, funds from the HTRZ (Housing and Transit Reinvestment Zone), to grants, County funds, and bonds.

As noted earlier, the next steps are for the Council to adopt the final Parks Plan in late summer of 2024, and prepare for a Parks Impact Fee study (charged to new developers, not current residents), investigate property acquisition and agreements, and oversee park design and construction.

Residents can review the plan on the 'How We Grow Matters' tab on the City's website: [sslc.gov](https://www.sslc.gov)

A copy of the presentation is attached and incorporated by this reference.

2. An Ordinance of the South Salt Lake City Council Amending Sections 15.01.200 and 15.01.210 of the South Salt Lake City Municipal Code to Modify Fees Relating to the City's Culinary Water Impact Fee and Calculation in South Salt Lake City.

Hansen, Allen & Luce CEO and Project Manager, Steven Jones and Kai Krieger, reviewed the matter that was discussed at a previous meeting. Items 2 and 3 correlate with each other and provide the calculation for the impact fees, and the updating of the impact fees.

Mr. Krieger noted that some modifications were made since the last meeting by impact fees attorney, Jodi Hoffman, to lower the growth projections, move a few projects out of the ten-year window, and prevent any potential issues for the City with incoming developers.

Council Member Williams wanted to know what would happen if the City ended up having higher growth projections and how it would affect the impact fees that were in place.

Mr. Krieger and Mr. Jones explained that if growth happens faster, then projects would be triggered sooner because of more funding coming to the City through new developments and the City could then update its impact fees like its doing now.

This matter is to be considered for final action at the Regular Meeting that follows.

A copy of the Ordinance is attached and incorporated by this reference.

3. An Ordinance of the South Salt Lake City Council Amending Section 3.11.040(B) of the South Salt Lake City Municipal Code to Modify Fees Relating to Culinary Impact Fees in South Salt Lake City.

Hansen, Allen & Luce CEO and Project Manager, Steven Jones and Kai Krieger, reviewed the matter that was discussed at a previous meeting. Items 2 and 3 correlate with each other and provide the calculation for the impact fees, and the updating of the impact fees.

Council Member Mitchell asked if the impact fee would be charged multiple times and to who.

Mr. Krieger said that the impact fee is a one-time fee charged to new development and the calculations that's determined by the meter sizes would determine how much the impact fee is. He also added that what their firm does is to look at the projects that are necessary to serve the incoming growth. This includes things like a new well and considering how much water, storage, and source would be required for a new connection.

There was discussion to clarify that impact fees are already being charged to current developments in the City, and that these Ordinances are to amend those impact fees, as well as their calculations, and are based on the City's projection of growth over the next several years.

Council Member Sanchez asked what the estimated cost was to begin the project like the well, new lines, etc.

Mr. Jones said that each project is triggered when the existing capacity runs out. The new well has already been started because the City is at its capacity and has bonded for it.

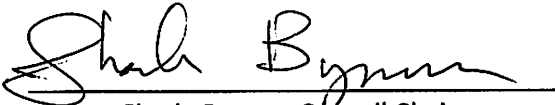
City Attorney, Josh Collins, said that the amount that the City is getting from the State of Utah Board of Water Quality is around 8.5 million dollars which the City will pay back at around 1% interest rate over 30 years.

There was also clarification made that the new impact fees wouldn't be collected until this Ordinance was approved and a period of 90 days passed when the City could begin collecting the new impact fees.


This matter is to be considered for final action at the Regular Meeting that follows.

A copy of the Ordinance is attached and incorporated by this reference.

The meeting adjourned at 6:57 p.m.



Sharla Bynum, Council Chair



Ariel Andrus, City Recorder

South Salt Lake Parks Plan

A vision for the future of our parks, trails, and open space





Table of Contents

01

Background

02

**How to Use
the Parks Plan**

03

**Values, Vision
& Big Ideas**

04

Recommendations



01

Background



Introduction

Purpose

- To create a comprehensive, long-term vision for our city's park system that aligns with the community's evolving needs, values, and aspirations.
- To serve as a guiding document for the development, management, and preservation of parkland and recreation facilities.



Introduction

Scope

- Assessment of our current park system within the context of current and projected demographics and recreational needs and trends.
- Prioritized recommendations based on community input, feasibility, and anticipated resources.
- Discussion of issues like park accessibility, environmental sustainability, and potential partnerships with community stakeholders and organizations.



Accomplishments of the 2015 Plan

- West Fitts Park Expansion
- Bickley Park
- Promise Park
- Oakland Ave Dog Park
- Central Park Basketball and Pickleball
- Kaleidoscope Park Renovation
- Community Center Renovations





02 How to Use the Parks Plan

How to Use the Parks Plan

Decision-Making

Over the next decade, city officials and staff can ensure that future actions align with the needs and preferences of our residents and stakeholders.

Public Education

Inform the public about the park system and its goals while creating excitement and buy-in from residents to build support for future projects and programming.

Prioritization

The plan establishes a step by step course for achieving the objectives of this plan. It helps city officials know where to begin in improving our parks.

Funding

Most revenue sources require some degree of planning. The Plan allows the City to assess development fees and declare our preparedness and eligibility for outside funding sources.

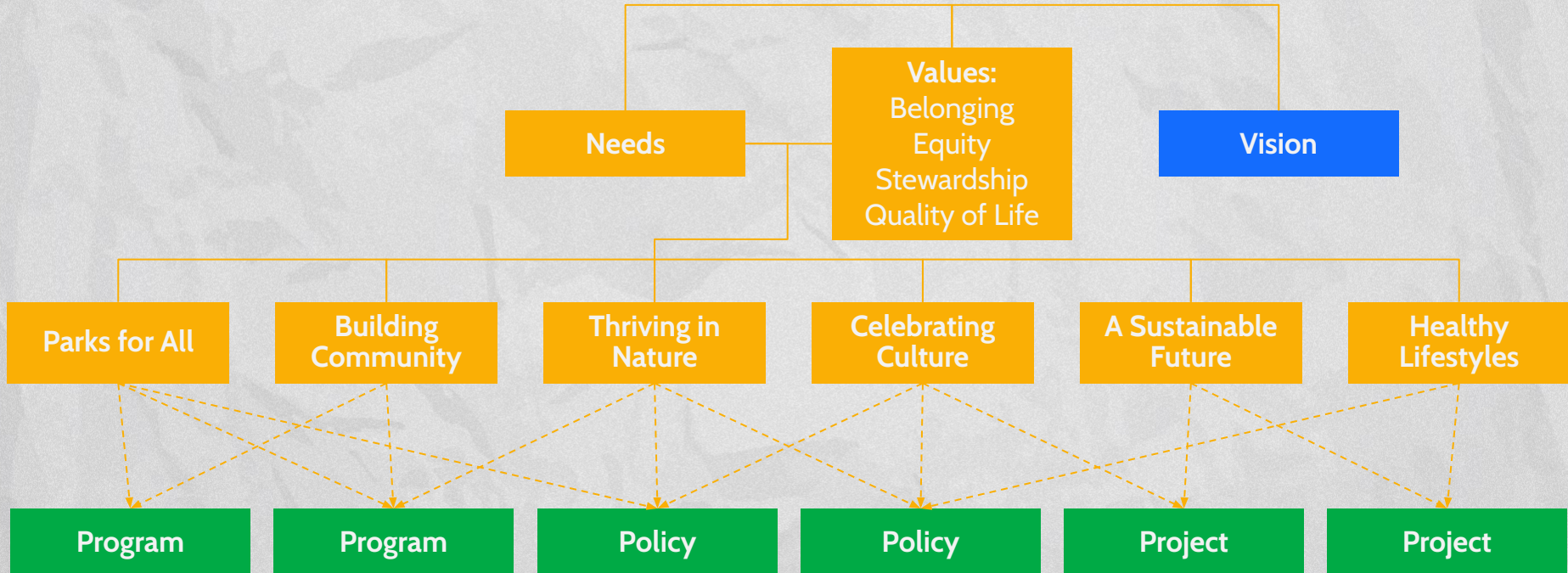
Partnership Development

The plan allows us to enhance and pursue new partnerships with community organizations, businesses, and other stakeholders.

Evaluation & Progress Checks

We can use this plan to track our implementation and hold ourselves accountable to the vision and objectives it establishes.

Plan Organization





03 Values, Vision & Big Ideas



What is a value?

Values are foundational principles that guide our decisions.

They define what's important to us and are the motivations behind our actions.

In the context of this plan, core values are the **Why?**

Plan Values



Belonging

- Everyone should feel like they are safe and welcome in our parks. Everyone should feel valued and like they matter.
- Our shared spaces should instill a sense of pride.



Equity

- The plan should be implemented in ways that include a diverse collection of South Salt Lake voices.
- Our parks should serve residents equally regardless of where they live or who they are.



Stewardship

- We believe in caring for the people and places around us. This includes taking care of what we have.
- We strive to maintain and preserve our natural assets while improving the health of wildlife and the environment.



Quality of Life

- Parks should continue to contribute to making our city a pleasant, safe, and healthy place to live and thrive.
- Access to nature can enhance and improve the quality of life in our city.

What is a vision statement?

A vision statement presents the City and Committee's ambition for the future. It clearly describes the long-term goals, dreams, and aspirations for the city and its parks, neighborhoods and communities.



Parks Plan Vision Statement

Focus: Core Values & Park Experience

Parks are a vital part of the quality of life in our city. South Salt Lake parks are inclusive hubs, where people of all ages, abilities, and backgrounds can thrive in nature, connect with their community, and celebrate culture. We are stewards of our environment, ensuring parks are safe, welcoming oases that promote wellness and a sustainable future for generations to come.





What is a big idea?

A big idea is a thematic goal that we want our park system to fulfill.

Big ideas are overarching themes and more broad than specific implementation strategies or recommendations.

The programs, policies, and projects we eventually come up with will tie into one or more big idea.

Parks Plan Big Ideas



Parks for All



**Building
Community**



**Thriving in
Nature**



**Celebrating
Culture**



**A Sustainable
Future**



**Healthy
Lifestyles**





Parks for All

Inclusive Access: Ensuring parks cater to all ages, backgrounds, and abilities, by removing access barriers.

Neighborhood Hubs: Parks as the heart of every community, conveniently located and accessible by foot to serve diverse needs.

All Kinds of Fun: Offering a wide range of accessible recreational options that spark joy and encourage lifestyle and activity variety.



Building Community

Memories in the Making: Fostering spaces where friends, families, and neighbors gather and bond to create lasting memories.

Belonging and Pride: Promoting social connections that build a strong sense of community and shared ownership.

Actively Engaged: Create opportunities that promote stewardship, education, volunteerism, and coaching.



Thriving in Nature

Reconnect and Recharge: Parks and open space are sanctuaries from urban stress, offering opportunities to connect with the natural world.

Learn and Appreciate: Fostering environmental education and appreciation through first-hand experiences with the wonders of our surrounding.

Meaningful Engagement: Creating immersive experiences that cultivate a sense of wonder and respect for nature.



Celebrating Culture

Diversity on Display: Showcase the artistic vibrancy and cultural richness of our community within parks through artistic and cultural programming.

Expression Unleashed: Create spaces and programs that ignite creative expression and celebrate cultural heritage.

Make Your Mark: Art installations that tell our community's stories.



A Sustainable Future

Protectors of Nature: Foster environmental stewardship by protecting wildlife habitats and promoting biodiversity.

Thriving Together: Maintain and enhance water, air, and land quality for a healthy environment for all.

Green Practices: Commit to sustainable solutions and responsible park management.



Healthy Lifestyles

Active Mind and Body: Provide various fitness amenities and programs to encourage healthy lifestyles.

Active Connections: Develop safe and accessible pathways that connect parks and encourage active transportation.

A Welcoming Oasis: Ensure parks are clean, safe, and inclusive spaces for everyone to enjoy.



04 Recommendations



What is a recommendation?

Recommendations are the Programs, Policies, and Projects that help us achieve our Big Ideas.

These are all the different way we can improve our parks system to meet our needs, goals, and vision.

While we will include every idea we've heard in the appendix, we want to highlight some key priority projects based on common demand and need.

Parks Plan Recommendations



Programs

Programs are the activities, events, and initiatives that we might host in the park.

These could include sports leagues and social clubs or special community events.



Policies

Policies are the collection of the ways we run and operate our parks.

These include rules, regulations, schedules, and other standards of operation.



Projects

Projects are the physical improvements that we could build.

This includes enhancing our existing parks or even constructing new parks and facilities.



Priority Programs

- Regular community events, including open streets, food truck rallies, and movie nights
- Regular performing art and cultural events in parks
- Organized bike rides
- Outdoor wellness and fitness classes
- Gardening and nature classes/walks
- Park ranger program to help maintain a more regular presence in our parks
- Urban Forestry initiatives
- Stewardship and volunteerism



Priority Policies

- Off-leash days at parks
- Development ordinances: open space requirements; adjacent frontage design
- Regular accessibility audits at each park
- Later open hours
- Update ordinances related to special events, business activities (food trucks), and alcohol
- Enhanced trail maintenance, potentially in partnership with other jurisdictions
- Increased operations and maintenance staff and budget targets. (ex. Within a percentage of our peers or in relation to park acreage.)
- Creative space usage: utilizing streets, schoolyards, other jurisdictions, nonprofits, churches and major landowners

Priority Projects: Park Improvements

- Accessible Parking
- Walking Paths: McCall Park, Central Park
- Safety Lighting and cameras
- Sport Court and Field Lighting Improvements
- Art Installations: murals, park gateways, graffiti walls
- Dog Park Improvements
- Educational and interpretive signage and installations
- Wayfinding/Identity Signage



Priority Projects: New Amenities

- Splash Pad
- Skate Park
- Volleyball
- Futsal
- Basketball
- Disc golf
- BMX/pump track
- Pickleball
- Additional dog parks
- Nature play
- Playgrounds
- Stage/Bandshell
- Pavilions



Priority Projects: New Parks & Facilities



Nighborhood Park Target Areas

- NP1 Downtown Park
- NP2 Water Tower Park
- NP3 Southgate Park
- NP4 Millcreek Station Park
- NP5 Riverfront-Meadowbrook Place Park
- NP6 Southeast Park



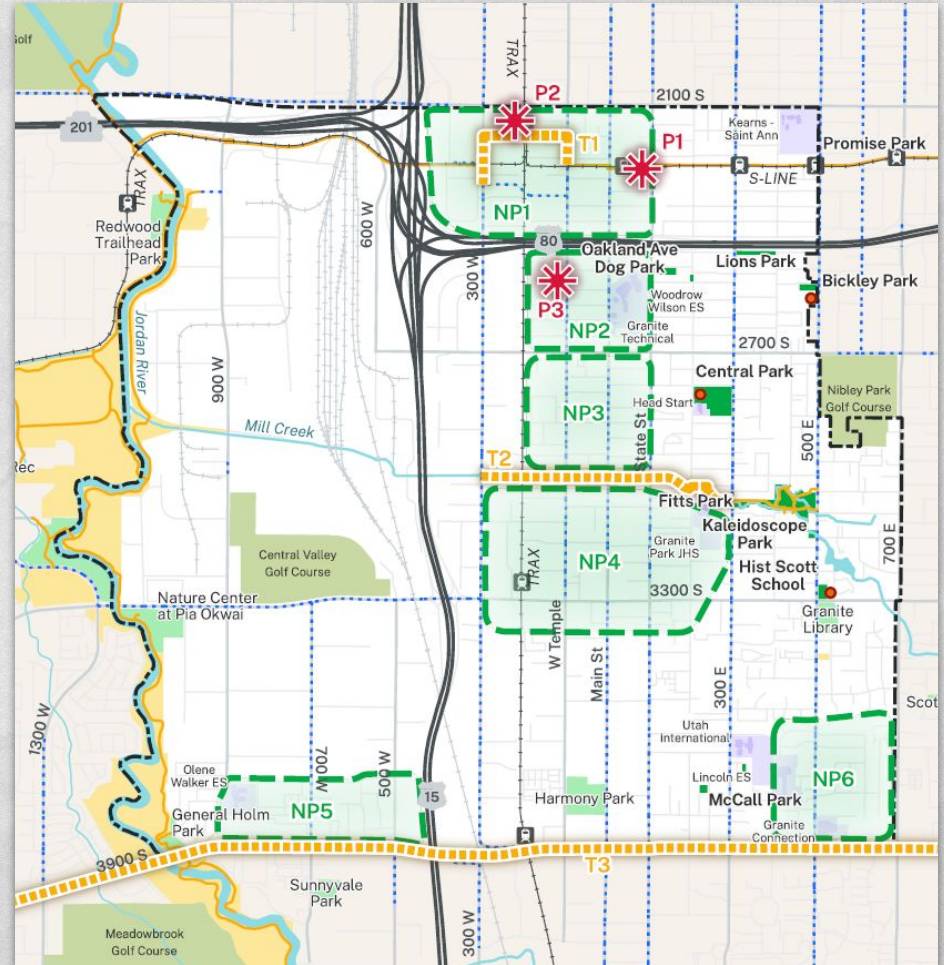
Trails & Greenways

- T1 Parley's Trail Downtown Route
- T2 Mill Creek Trail
- T3 3900 S Shared Use Path



Plazas & Other Open Space

- P1 Streetcar Gateway Plaza
- P2 Central Pointe Transit Plaza
- P3 Water Tower Plaza



Potential Funding Sources

General Fund

The main pot of money used by the city to fund operations and regular capital improvements.

Grants & Earmarks

Funds awarded by federal, state, and county government agencies (ZAP 2025), non-profits, or foundations for specific capital projects.

Park Impact Fees

Fees developers pay to offset the impact their projects (new residents) have on parks and park service levels.

County Funds

Salt Lake County regularly allocates funds from their budget to support park projects within different cities.

HTRZ

Increased property tax revenue in our downtown can be used to finance improvements in within downtown.

Bonds

A voter-approved loan funded by property taxes to pay for expensive park projects upfront, spreading the cost out over time

Next Steps

Winter 2024	Spring 2024	Summer 2024	2024 & Beyond
Advisory Committee Launch Promise SSL Youth Workshops	Community Open Houses Develop Draft Plan City Council & Planning Commission Presentations	Final Plan Prepare Plan for Adoption Parks Plan Launch	Parks Impact Fee Study Capital Improvements Plan Property Acquisition & Agreements Park Design & Construction



Thanks!

Parks Plan Website



Anthony Biamont
abiamont@sslc.gov
801 464 6782

Sharen Hauri
shauri@sslc.gov
801 464 6771

Jed Shum
jshum@sslc.gov
801 483 6010

Eliza Ungricht
eungricht@sslc.gov
801 483 6013



ORDINANCE NO. 2024-_____

AN ORDINANCE OF THE SOUTH SALT LAKE CITY COUNCIL AMENDING SECTIONS 15.01.200 AND 15.01.210 OF THE SOUTH SALT LAKE CITY MUNICIPAL CODE TO MODIFY FEES RELATING TO THE CITY'S CULINARY WATER IMPACT FEE AND CALCULATION IN SOUTH SALT LAKE CITY.

WHEREAS, The South Salt Lake City Council (the "City Council") is authorized to enact and amend ordinances establishing regulations related to the health, safety, and welfare of the residents of the City of South Salt Lake (the "City"); and

WHEREAS, the City, with the assistance of its consultants, has researched and analyzed the factors set forth in the Utah Impact Fees Act located at Utah Code 11-36a-101 et seq. (the "Act"), and caused to be prepared a drinking water impact fee facilities plan and impact fee analysis, as part of the South Salt Lake Culinary Water Impact Fee Facilities Plan and Impact Fee Analysis for the City (the IFFP/IFA); and

WHEREAS, the City Council met in regular session and reviewed the IFFP/IFA on July 10, 2024, and held a duly noticed public hearing on July 31, 2024, to receive comment on and consider adoption of an amended IFFP/IFA; and

WHEREAS, the City Council, after the public hearing, considering all input received adopted the amended IFFP/IFA; and

WHEREAS, as a result of the adoption of that IFFP/IFA, the City's municipal code in sections 15.01.200 and 15.01.210 regarding the City's Culinary Water Impact Fee service area and the City's Culinary Water Impact Fee Calculation, should be updated to reflect the newly adopted IFFP/IFA; and

WHEREAS, the City Council hereby determines that amending sections 15.01.200 and 15.01.210 of the South Salt Lake Municipal Code to modify impact fee service area and calculation as shown in "Exhibit A," which is attached hereto and incorporated by this reference, is in the best interest of the health, safety, and welfare of the residents of South Salt Lake City.

NOW THEREFORE, BE IT ORDAINED, by the City Council of the City of South Salt Lake as follows:

SECTION 1. Enactment. Sections 15.01.200 and 15.01.210 are hereby amended, as attached hereto, and incorporated by reference in "Exhibit A."

SECTION 2. Severability. If any section, subsection, sentence, clause, phrase, or portion of this ordinance is, for any reason, held invalid or unconstitutional by any court of competent jurisdiction, such provision shall be deemed a separate, distinct, and independent provision, and such holding shall not affect the validity of the remaining portions of this ordinance.

SECTION 3. Conflict with Existing Ordinances, Resolutions, or Policies. To the extent that any ordinances, resolutions, or policies of the City of South Salt Lake conflict with the provisions of this ordinance, this ordinance shall prevail.

SECTION 4. Effective Date. This ordinance shall become effective upon Mayor’s signature and publication, or after fifteen days of transmission to the office of the Mayor if neither approved nor disapproved by the Mayor, and thereafter, publication.

DATED this _____ day of _____, 2024.

BY THE CITY COUNCIL:

Sharla Bynum, Council Chair

ATTEST:

Ariel Andrus, City Recorder

City Council Vote as Recorded:

Huff _____
Thomas _____
Bynum _____
Mitchell _____
Sanchez _____
Pinkney _____
Williams _____

Transmitted to the Mayor’s office on this _____ day of _____ 2024.

Ariel Andrus, City Recorder

MAYOR’S ACTION: _____

Dated this _____ day of _____, 2024.

Cherie Wood, Mayor

ATTEST:

Ariel Andrus, City Recorder

PART II. SPECIFIC IMPACT FEES

15.01.200 Culinary water impact fee—Service area, IFFP and IFA.

- A. Service Area. The service area for culinary water impact fees includes Pressure Zone 1 (shaded red) on the South Salt Lake City Drinking Water System Master Plan, which was previously adopted by this Council, as shown at Figure 1.

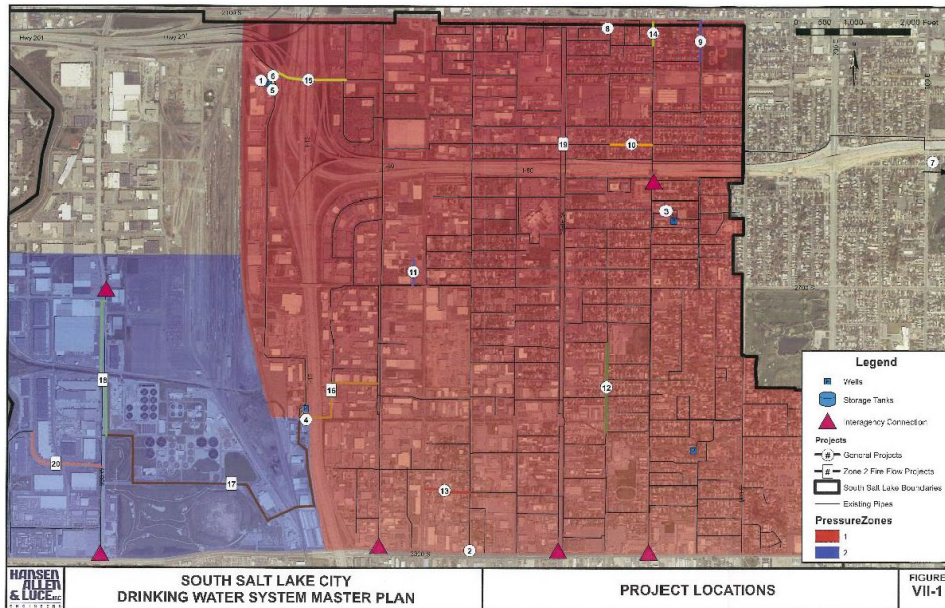


Figure 1

- B. Culinary Water Impact Fee Facilities Plan. Pursuant to Section 15.01.050 of this Chapter and Section 11-36a-302 of the Act, the City has, through its consultants, researched and analyzed the factors set forth in the Act and caused to be prepared a culinary water impact fee facilities plan, as part of the Culinary Water Impact Fee Facilities Plan and Impact Fee Analysis: City of South Salt Lake. The culinary water IFFP establishes the current and proposed level of service. The City currently maintains a system which meets the state's requirements for drinking water systems related to peak and average distribution, and future development will require the City to expand its water source, distribution and storage systems in a manner which continues to meet the state's standards for drinking water systems. The ~~Culinary South Salt Lake Drinking Water Impact Fee Facilities Plan and Impact Fee Analysis: City of South Salt Lake~~, attached as Exhibit A to Ordinance ~~2014-24~~ 2024-09, is hereby adopted in its entirety by the City in accordance with applicable provisions of this Chapter and the Act.
- C. Impact Fee Analysis. Pursuant to Section 15.01.050 of this Chapter, and Section 11-36a-303 of the Act, the City has, through its consultants, researched and analyzed the factors set forth in the Act and prepared a culinary water impact fee analysis, as part of the ~~Culinary South Salt Lake Drinking Water Impact Fee Facilities Plan and Impact Fee Analysis: City of South Salt Lake~~, which is attached as Exhibit A to Ordinance ~~2014-24~~ 2024-09, is hereby adopted in its entirety by the City in accordance with the applicable provisions of this Chapter and the Act.

15.01.210 Culinary water impact fee—Calculation.

- A. Based upon the culinary water IFA, equivalent residential connections in the City are those which connect to the City's culinary water system within the service area with a three-quarter-inch or smaller water meter.

- B. The maximum impact fee for culinary water for each equivalent residential connection is ~~seven hundred thirty-three dollars (\$733.00)~~ six thousand three hundred forty-five dollars (\$6,345).
- C. The City Council may, by amending the consolidated fee schedule, implement impact fees for development within the service area, with fees based upon the number of equivalent residential connections for a development, which fee shall be determined by the size of meter or meters installed for the development.

ORDINANCE NO. 2024-_____

AN ORDINANCE OF THE SOUTH SALT LAKE CITY COUNCIL AMENDING SECTION 3.11.040(B) OF THE SOUTH SALT LAKE CITY MUNICIPAL CODE TO MODIFY FEES RELATING TO CULINARY IMPACT FEES IN SOUTH SALT LAKE CITY.

WHEREAS, The South Salt Lake City Council (the “City Council”) is authorized to enact and amend ordinances establishing regulations related to the health, safety, and welfare of the residents of the City of South Salt Lake (the “City”); and

WHEREAS, the City, with the assistance of its consultants, has researched and analyzed the factors set forth in the Utah Impact Fees Act located at Utah Code 11-36a-101 et seq. (the “Act”), and caused to be prepared a drinking water impact fee facilities plan and impact fee analysis, as part of the Culinary Water Impact Fee Facilities Plan and Impact Fee Analysis for the City (the IFFP/IFA); and

WHEREAS, the City Council met in regular session and reviewed the IFFP/IFA on July 10, 2024, and held a duly noticed public hearing on July 31, 2024, to receive comment on and consider adoption of an amended IFFP/IFA; and

WHEREAS, the City Council, after the public hearing, considering all input received adopted the amended IFFP/IFA; and

WHEREAS, as a result of the adoption of that IFFP/IFA, the City’s consolidated fee schedule, codified in South Salt Lake Municipal Code 3.11.040(B), should be updated to reflect the newly adopted IFFP/IFA; and

WHEREAS, the City Council hereby determines that amending section 3.11.040(B) of the South Salt Lake Municipal Code to modify impact fees as shown in “Exhibit A,” which is attached hereto and incorporated by this reference, is in the best interest of the health, safety, and welfare of the residents of South Salt Lake City.

NOW THEREFORE, BE IT ORDAINED, by the City Council of the City of South Salt Lake as follows:

SECTION 1. Enactment. Section 3.11.040(B) is hereby amended, as attached hereto and incorporated by reference in “Exhibit A.”

SECTION 2. Severability. If any section, subsection, sentence, clause, phrase, or portion of this ordinance is, for any reason, held invalid or unconstitutional by any court of competent jurisdiction, such provision shall be deemed a separate, distinct, and independent provision, and such holding shall not affect the validity of the remaining portions of this ordinance.

SECTION 3. Conflict with Existing Ordinances, Resolutions, or Policies. To the extent that any ordinances, resolutions, or policies of the City of South Salt Lake conflict with the provisions of this ordinance, this ordinance shall prevail.

SECTION 4. Effective Date. This ordinance shall become effective upon Mayor’s signature and publication, or after fifteen days of transmission to the office of the Mayor if neither approved nor disapproved by the Mayor, and thereafter, publication.

(signatures appear on separate page)

DATED this _____ day of _____, 2024.

BY THE CITY COUNCIL:

Sharla Bynum, Council Chair

ATTEST:

Ariel Andrus, City Recorder

City Council Vote as Recorded:

Huff	_____
Thomas	_____
Bynum	_____
Mitchell	_____
Sanchez	_____
Pinkney	_____
Williams	_____

Transmitted to the Mayor's office on this _____ day of _____ 2024.

Ariel Andrus, City Recorder

MAYOR'S ACTION: _____

Dated this _____ day of _____, 2024.

Cherie Wood, Mayor

ATTEST:

Ariel Andrus, City Recorder

Exhibit A:

3.11.040 Building, Planning, and Zoning.

- B. Impact Fees. Impact fees are applicable if construction attributable to new growth is taking place within the specific fee's service area.

Culinary water impact fee	
¾" meter	\$733.00 \$6,345
1" meter	\$1,557.00 \$6,345
1.5" meter	\$5,690.00 \$12,690
2" meter	\$7,611.00 \$20,304
3" meter	\$16,664.00
4" meter	\$28,558.00
6" meter	\$46,676.00
Other meter connection	\$733.00/ERC, determined by director Impact fee = (water consumption, gpd)/(1,364 gpd/ERU)*(\$6,345 per ERC)

Sanitary sewer impact fee (meter size)	City multiplier	Impact fee
¾" meter	1.00	\$1,063.00
1" meter	2.12	\$2,259.00
1.5" meter	7.76	\$8,252.00
2" meter	10.38	\$11,038.00
3" meter	22.73	\$24,167.00
4" meter	38.96	\$41,417.00
6" meter	63.68	\$67,694.00

Parks impact fee	Fee per household
Single-family	\$1,677.00
Multi-Family	\$1,608.00