

Main Street City Council Work Session #1

August 22, 2024

Conсор Engineers | Spanish Fork City | UDOT

Upcoming:
Work Session #2: Sep. 17
Work Session #3: Oct. 15

1

Vision Plan

2

Safety and
Purpose & Need

3

Bus Stop
Concepts

4

Lighting
Themes

5

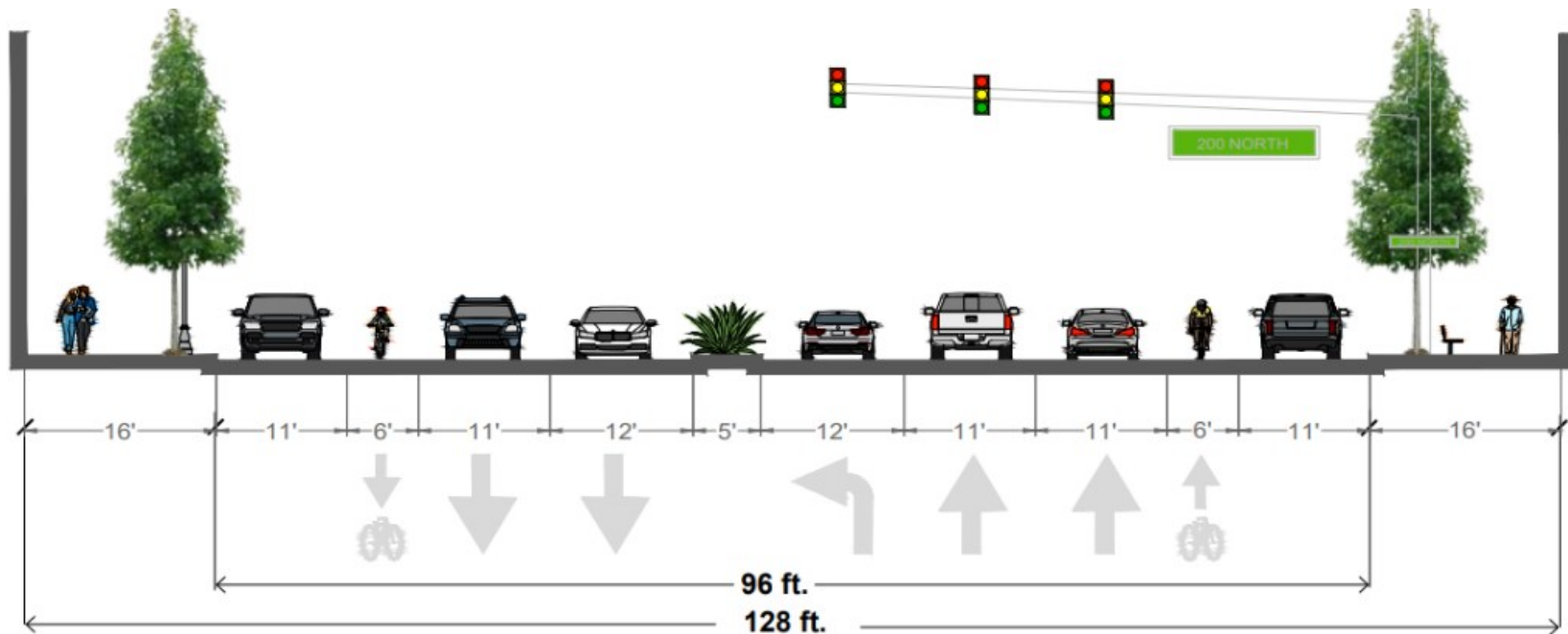
Wayfinding
Signage

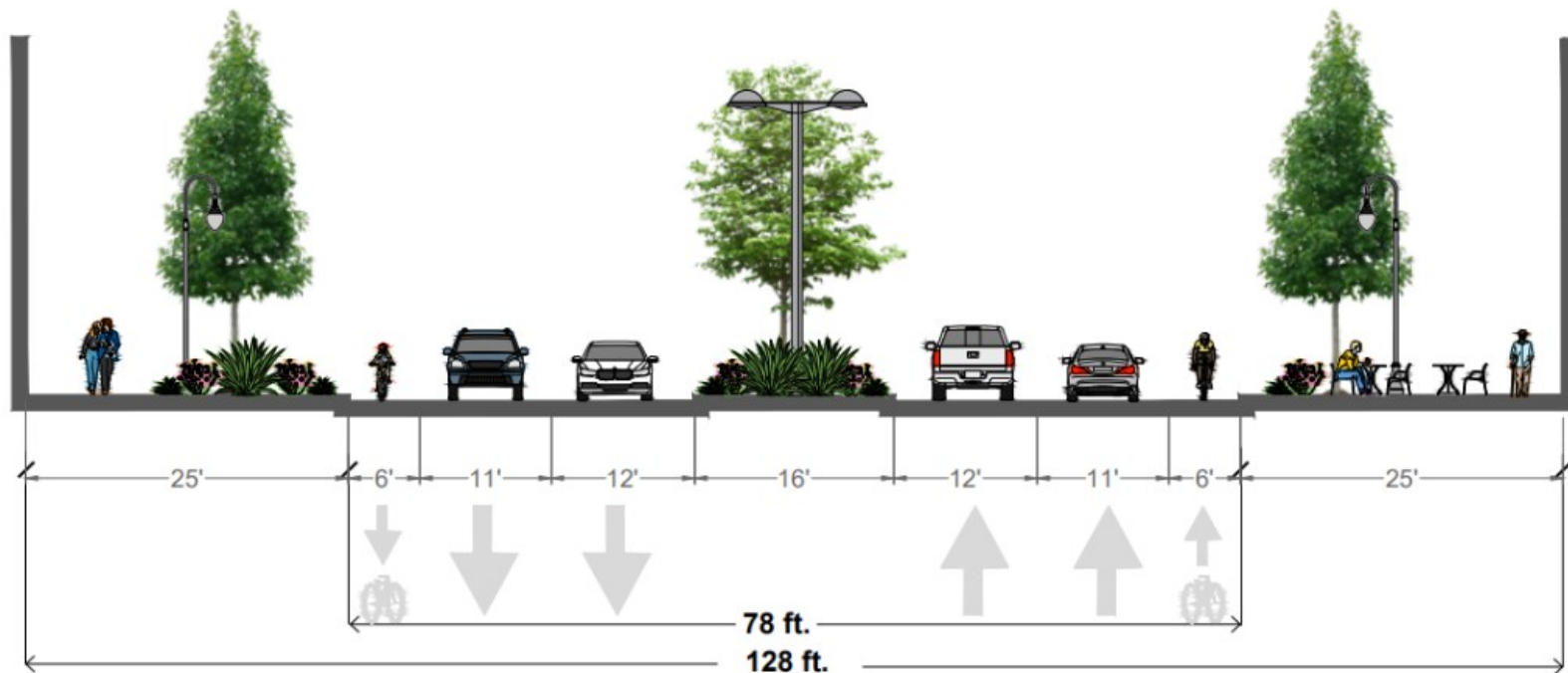


Vision Plan











2019 Vision Plan: Pedestrian Corridor

A photograph of a car accident scene. A blue sedan is on the left, with its front end heavily damaged and crumpled. A large yellow truck is on the right, partially visible, with its front end also showing signs of impact. The text "Purpose & Need" is overlaid in the center of the image.

Purpose & Need



**TOTAL
CRASHES:**
362

**INTERSECTION
RELATED:**
354

SPANISH FORK MAINSTREET CRASH SUMMARY

TOTAL CRASHES	362	100%
INTERSECTION RELATED	354	97.9%
DISTRACTED DRIVING	39	10.77%
SPEED RELATED	12	3.31%
CMV INVOLVED	11	3.04%
ROADWAY DEPARTURE	7	1.93%

MANNER OF COLLISION

ANGLE	176	48.62%
FRONT TO REAR	154	42.54%
SIDESWIBE SAME DIRECTION	14	3.87%
HEAD ON (FRONT TO FRONT)	10	2.76%

CRASH SEVERITY

NO INJURY/PDO	227	62.71%
POSSIBLE INJURY	101	27.90%
SUSPECTED MINOR INJURY	31	8.56%
SUSPECTED SERIOUS INJURY	3	0.83%
FATAL	0	0.00%

LEGEND



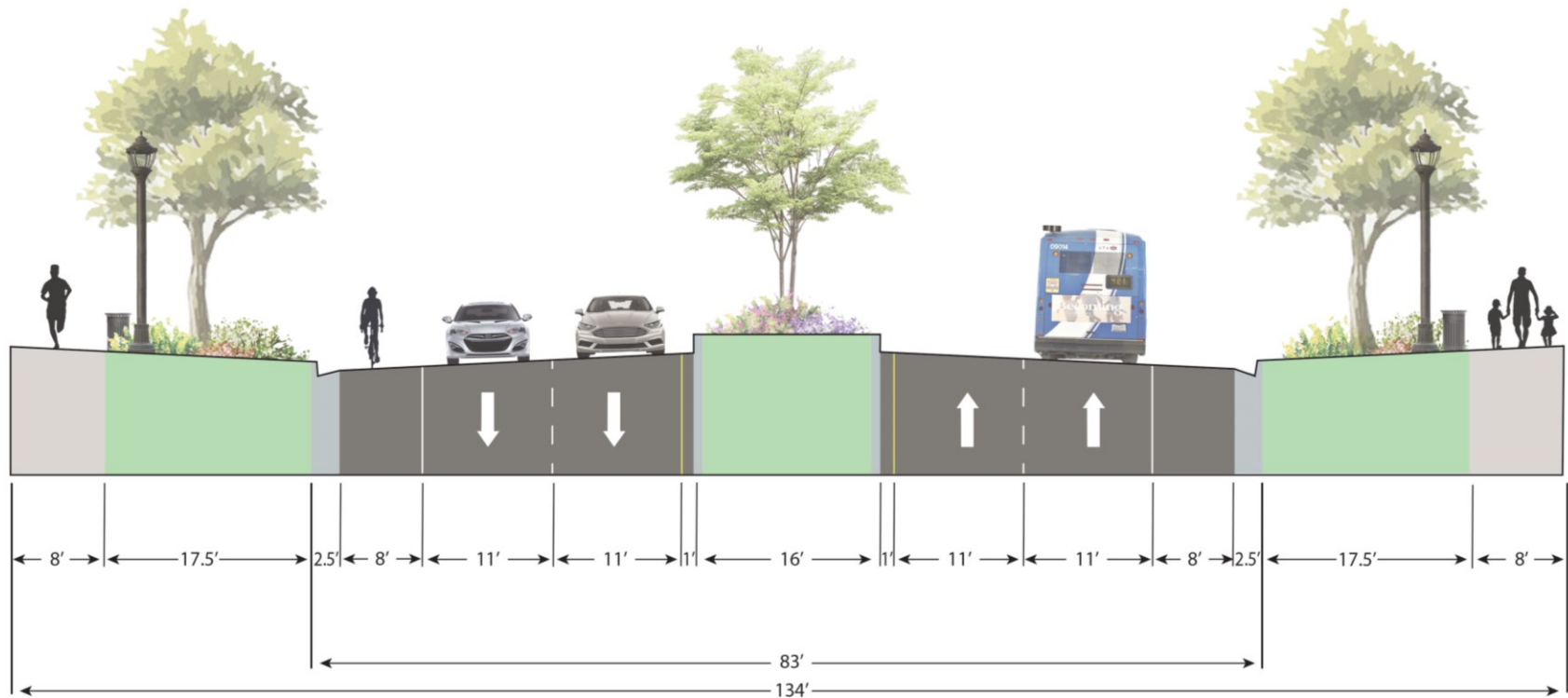
North
→

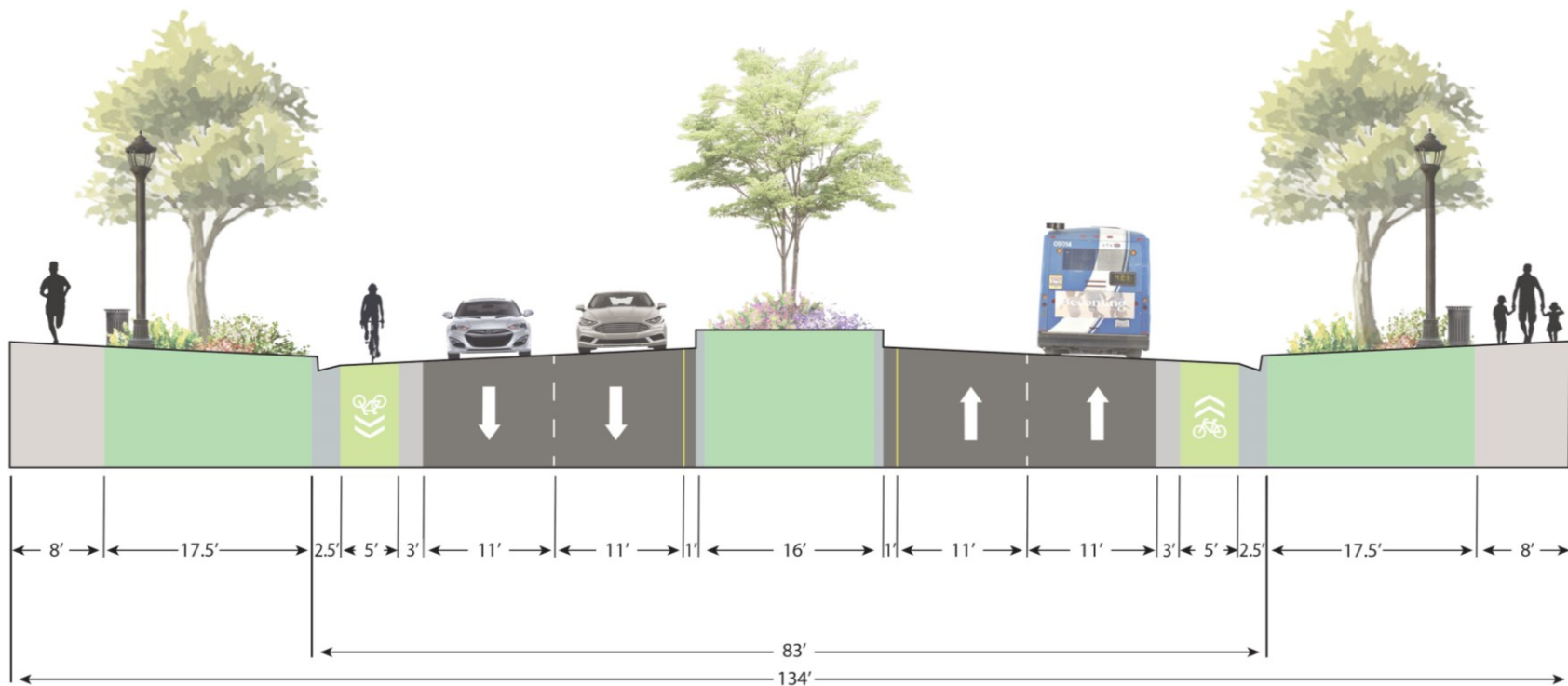
**UTAH CRASH COSTS FOR
CRASH SEVERITIES**

UNIT COST	TOTAL COST
\$18,600	\$4,222,200
\$184,900	\$18,674,900
\$368,300	\$11,417,30
\$1,704,400	\$5,113,200
\$16,090,700	-
	\$29,152,030

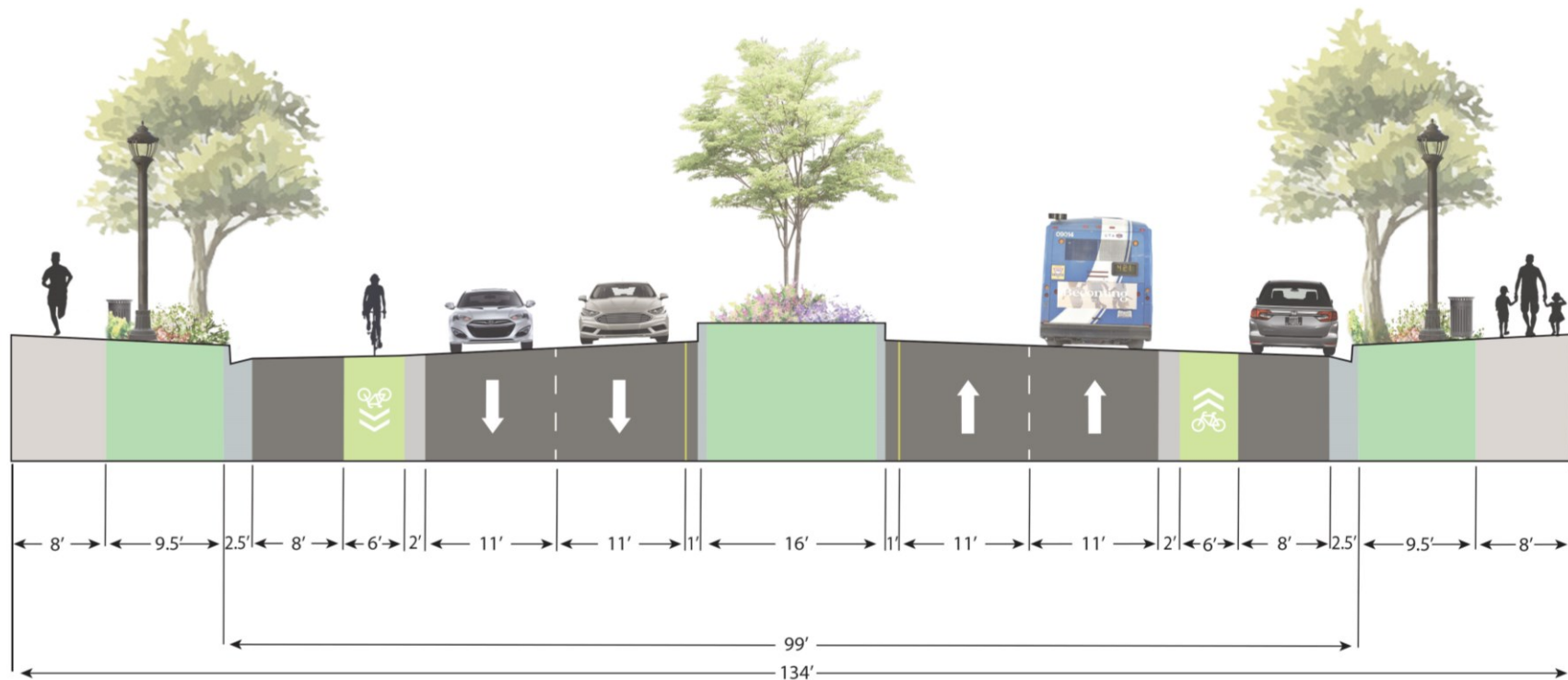
Main Street Corridor 600 N – 1000 N





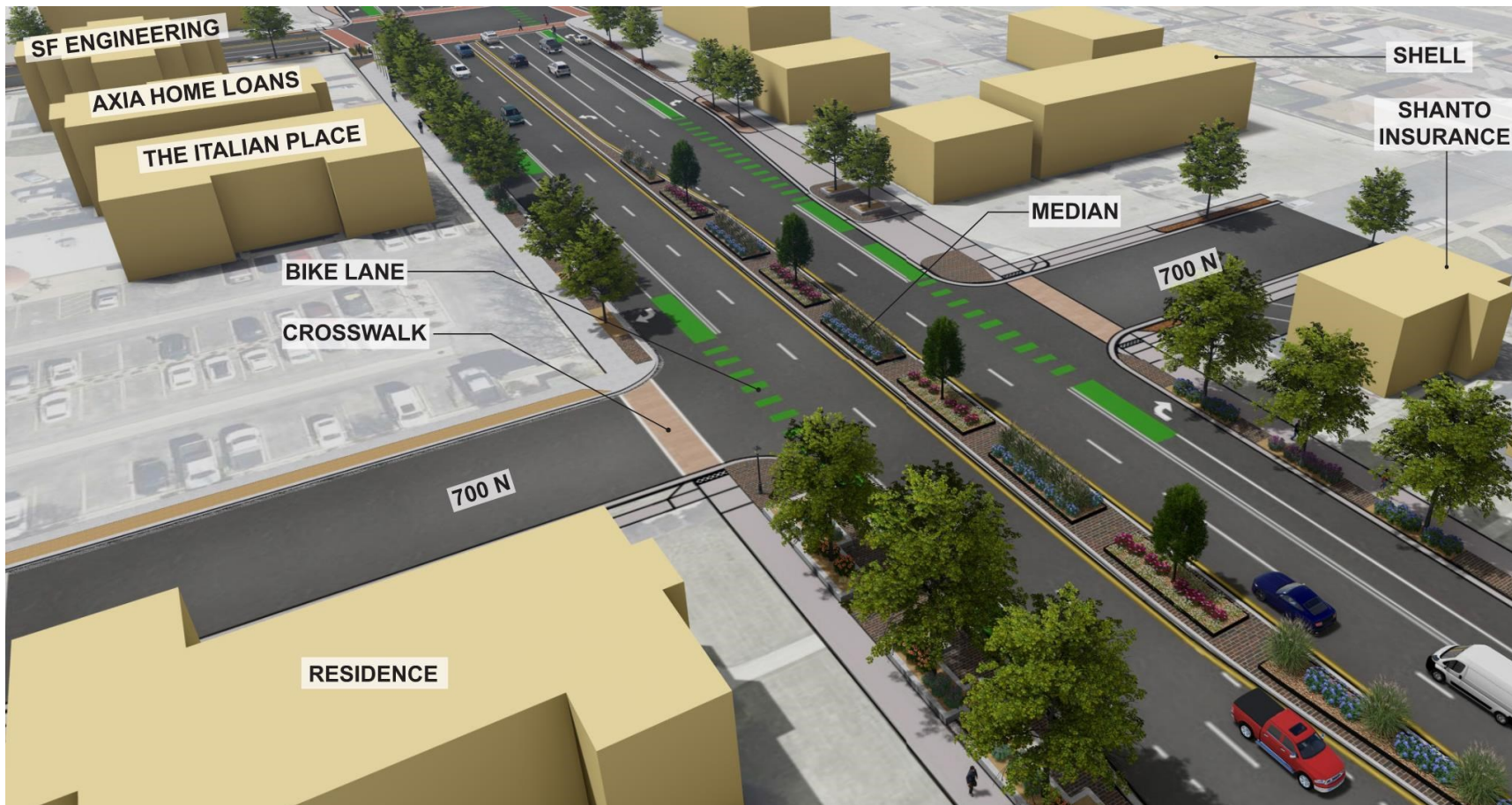


Typical Section: On Street Parking

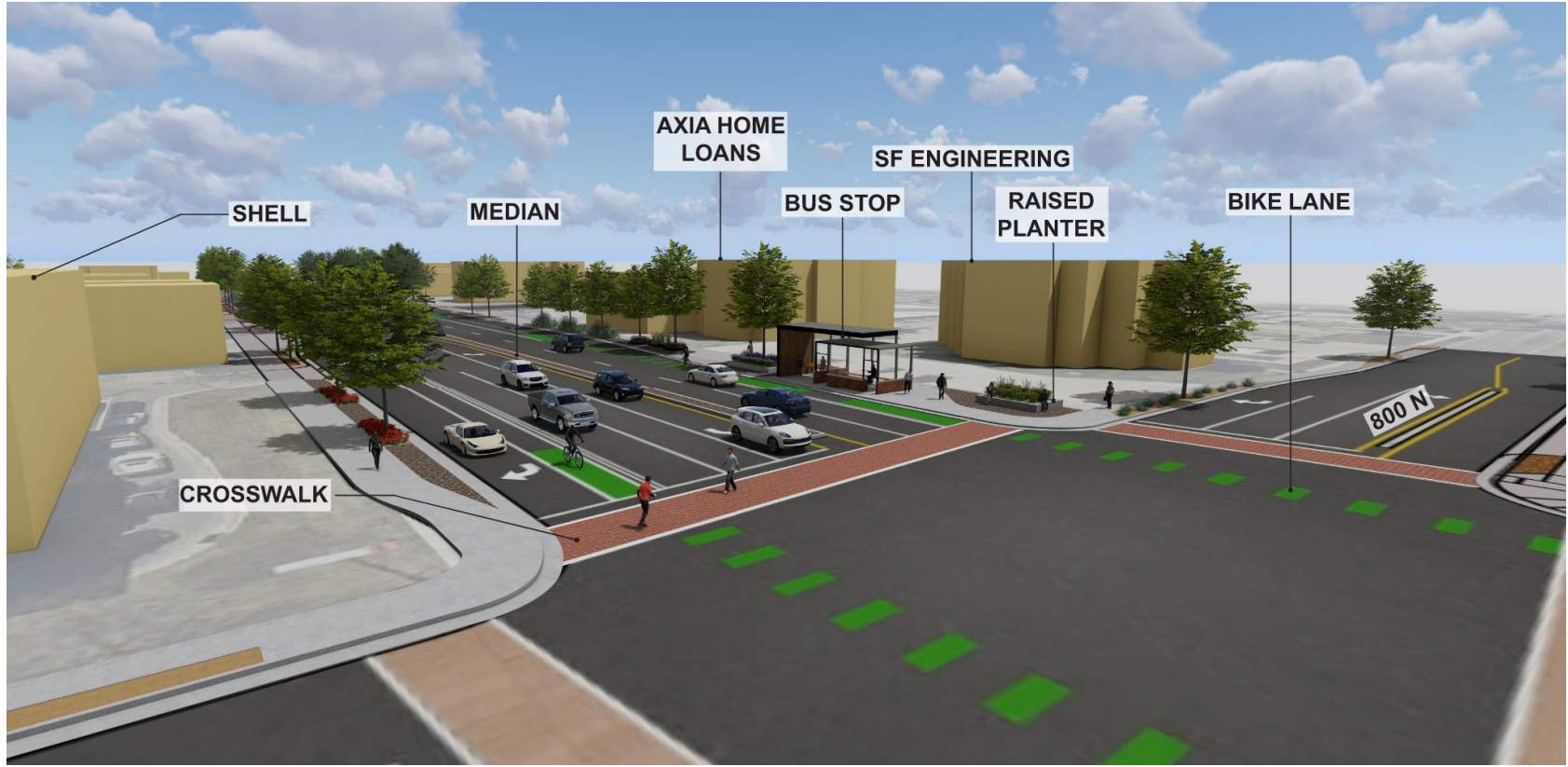




600 N to 1000 N: Corridor Plan



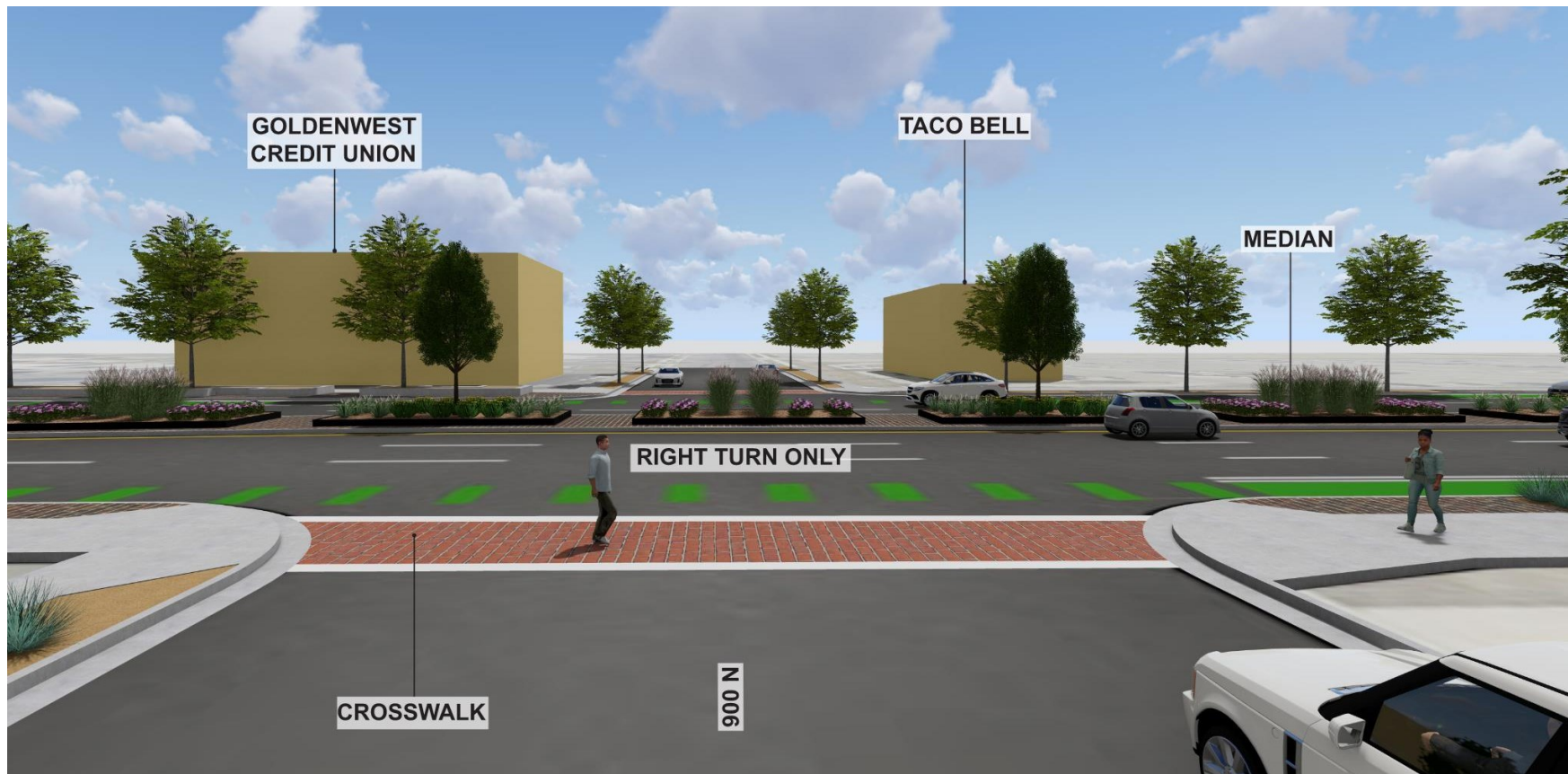
Corridor Perspective: 700 N Intersection View Northeast



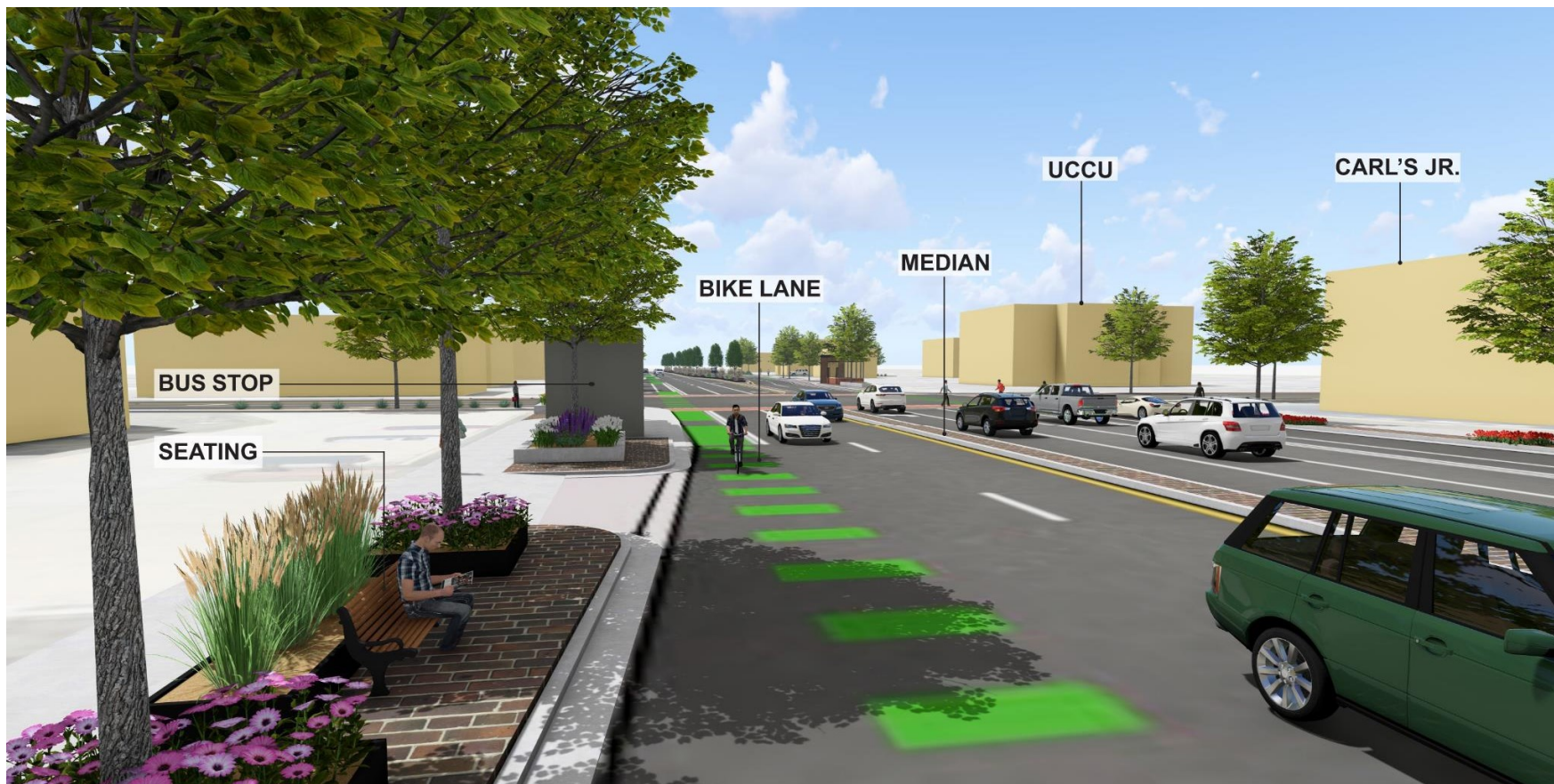
Corridor Perspective: 800 N Intersection View Southwest



Corridor Perspective: 900 N Intersection View West



Corridor Perspective: 900 N Intersection View West



Corridor Perspective: 800 N Intersection View North

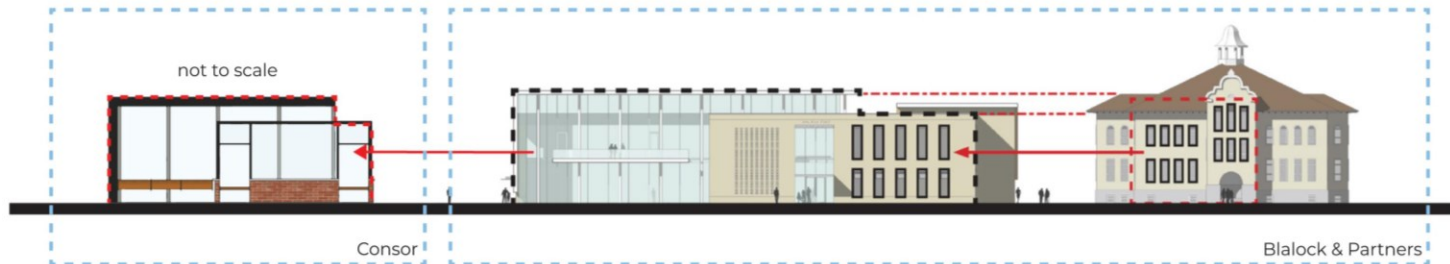


Corridor Perspective: 700 N Intersection View North

Bus Stop Concepts



CONCEPT



PERSPECTIVE RENDER



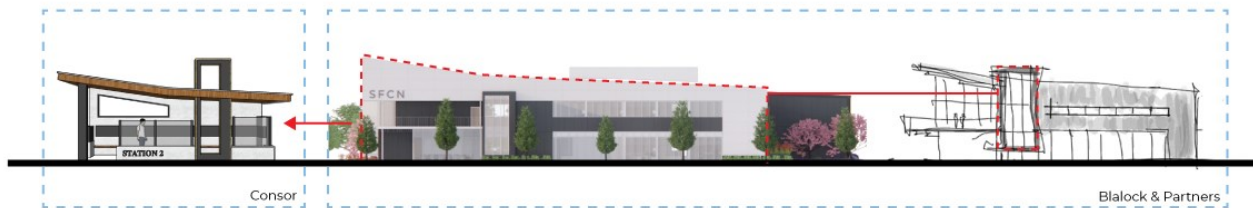
DIMENSIONS



THEME: SFCN Building

Alternative 2

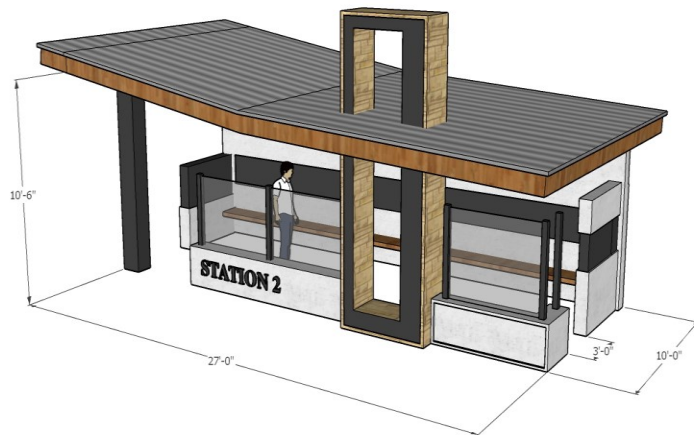
CONCEPT



PERSPECTIVE RENDER



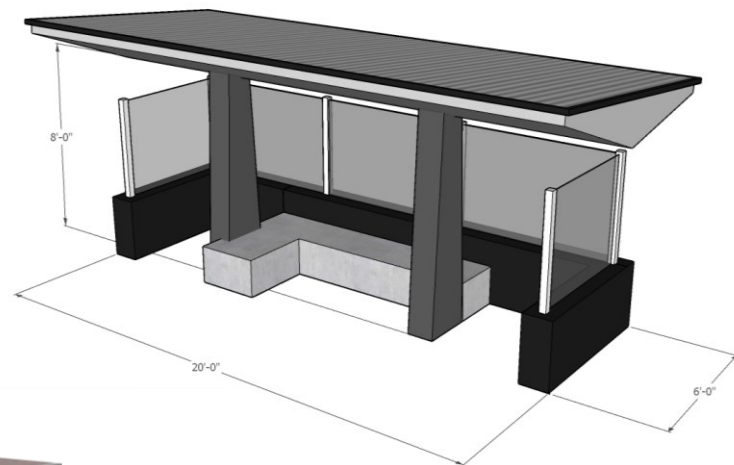
DIMENSIONS



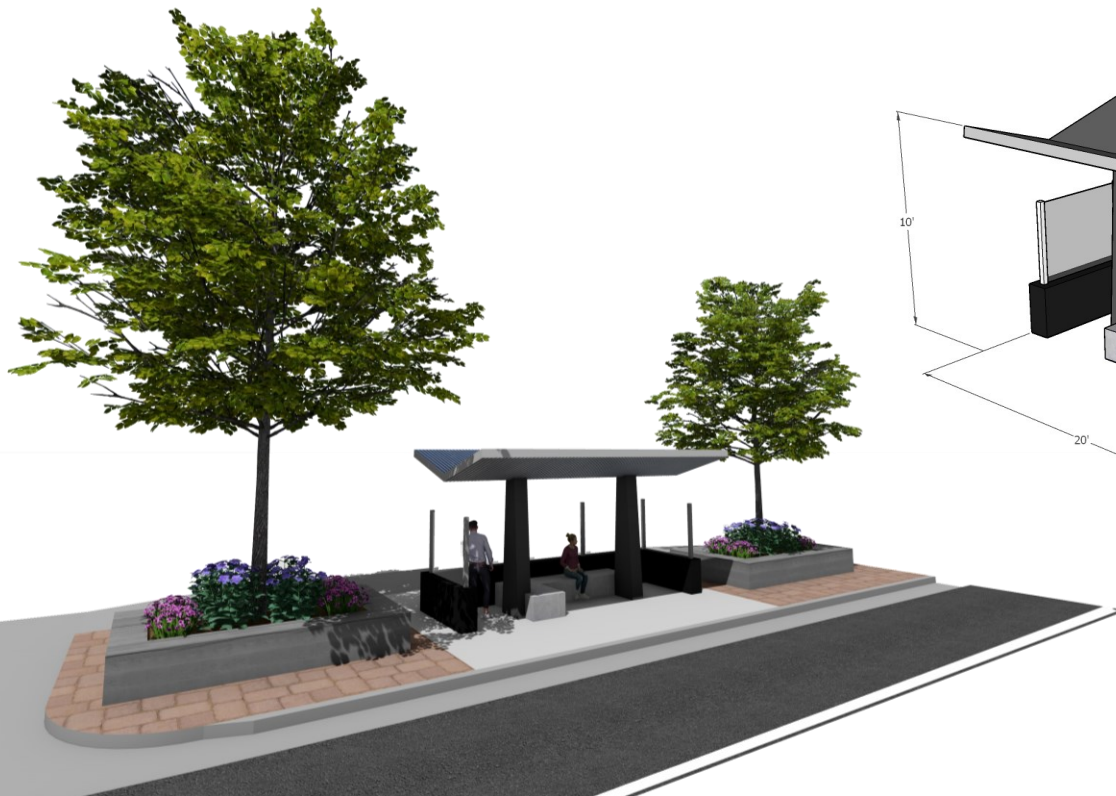
PERSPECTIVE RENDER



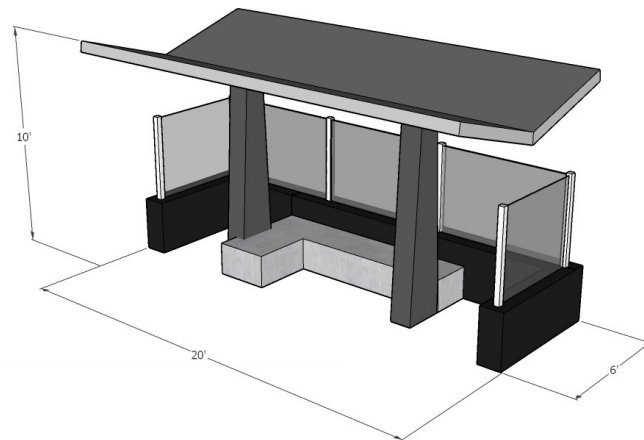
DIMENSIONS



PERSPECTIVE RENDER



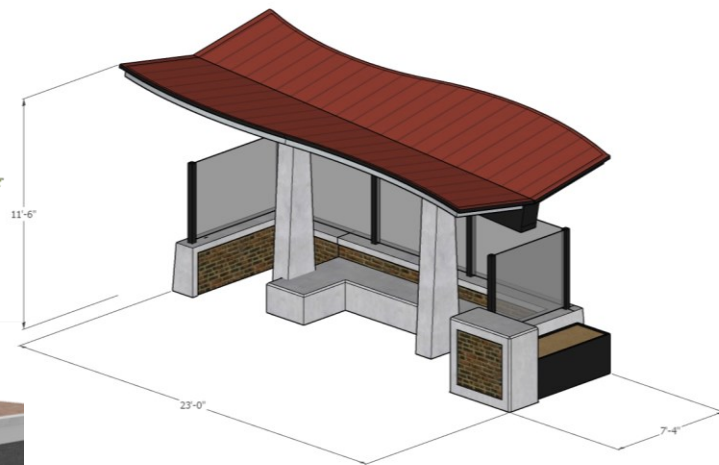
DIMENSIONS



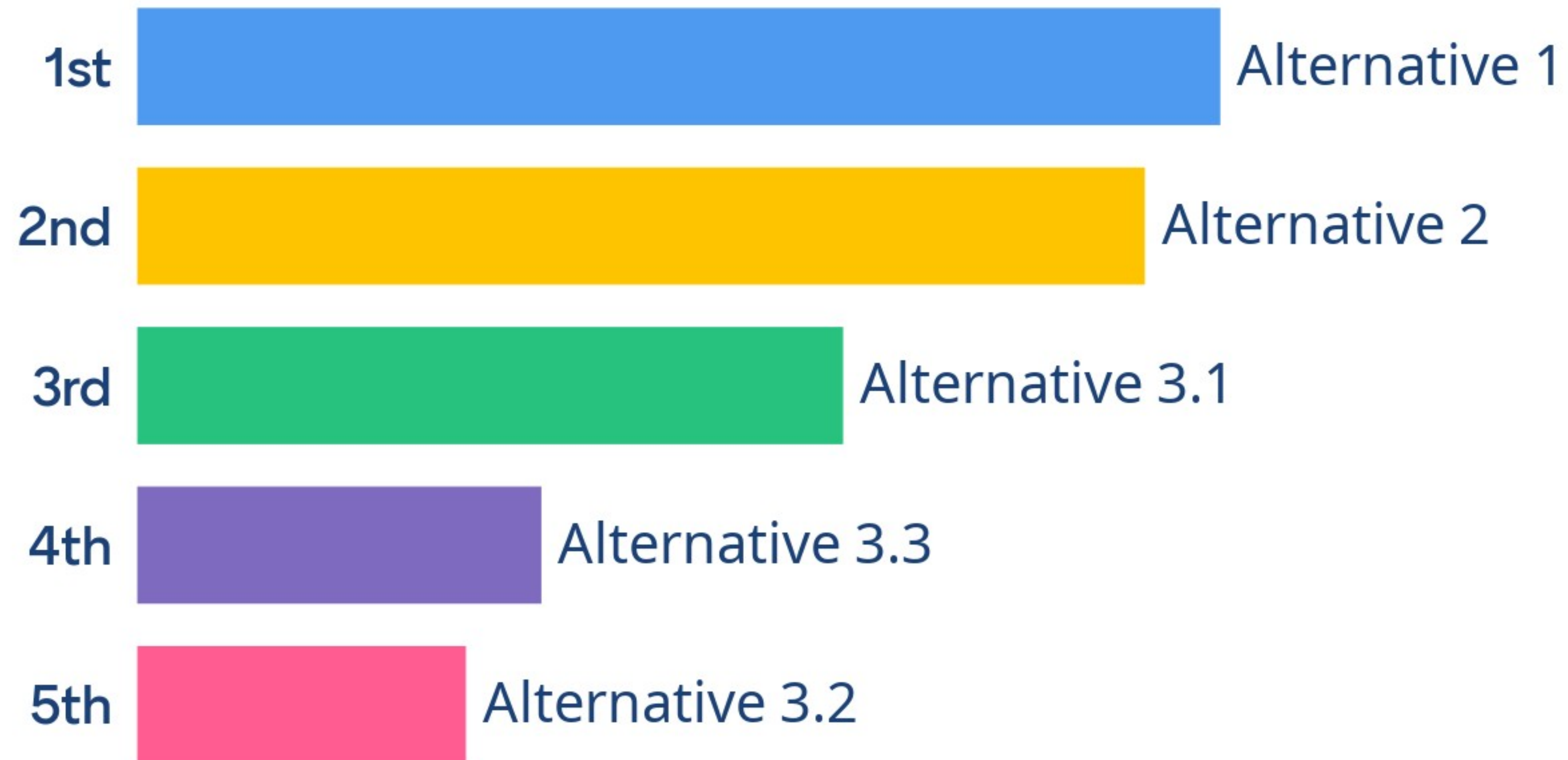
PERSPECTIVE RENDER



DIMENSIONS

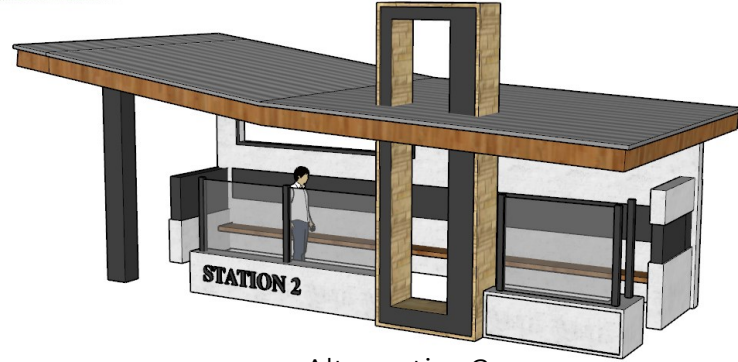


Ranking

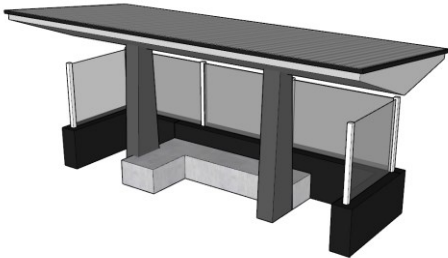




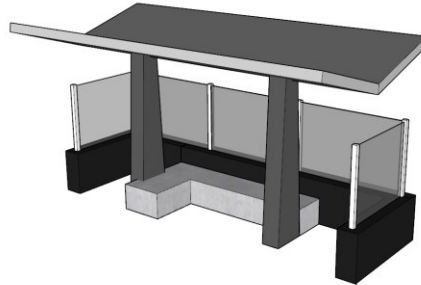
Alternative 1



Alternative 2



Alternative 3: Type 1



Alternative 3: Type 2



Alternative 3: Type 3

A photograph of a city street at dusk or dawn. A series of black street lamps with white, lantern-style shades are illuminated, creating a warm glow. The street is lined with bare trees. In the foreground, a person is walking on the sidewalk. In the background, cars are visible on the road, and a modern building with large windows is on the right. A blue emergency call station with the word "EMERGENCY" written vertically is visible on the right side of the street.

Corridor Lighting

1

Introduction &
Photometrics

2

Traditional
Theme

3

Hybrid
Theme

4

Modern
Theme





Luminaire

Hood
Cap
Lens
Cage or Yolk

Pole

Fluted
Smooth
Rail

Pole Base

Flared
Straight
Rounded/Hex/Square

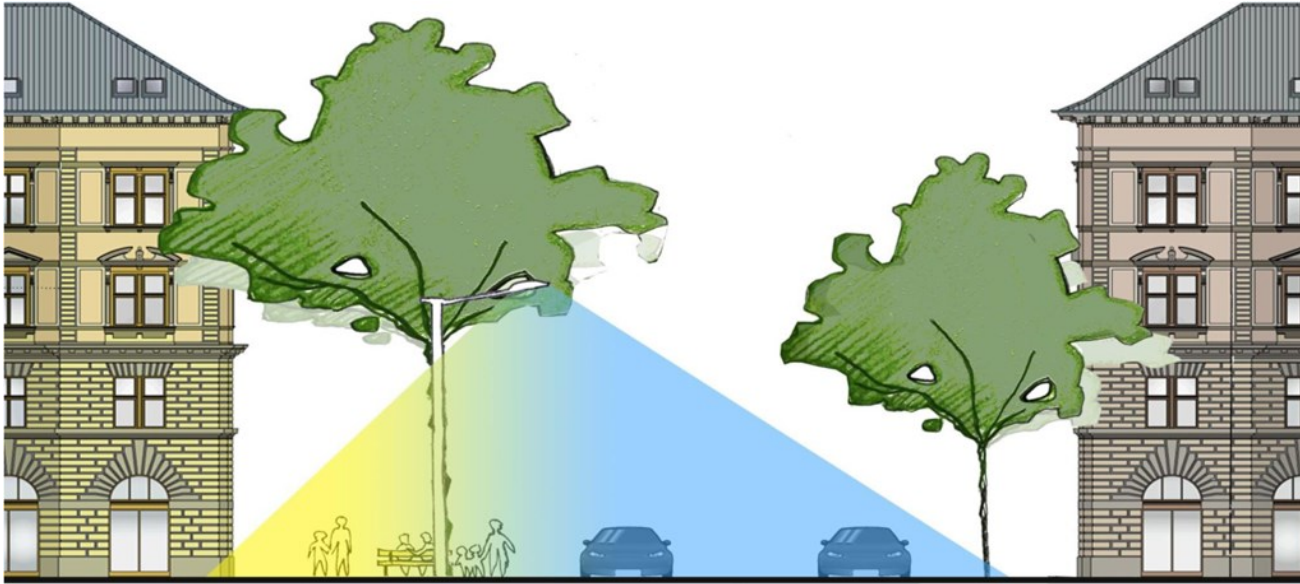
Light Pole Anatomy

- Endless options and varieties between various luminaire, pole and pole base elements
- Simplifying light assembly into three distinguishable categories
- Typical considerations between Luminaire Type, Pole Type and Pole Base

i.e Modern Luminaire will not have fluted pole or flared base. Doesn't match style.



Photometrics



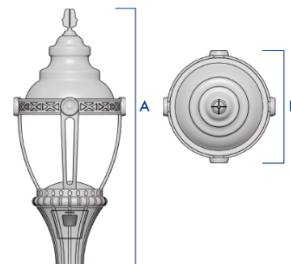
Sidewalk: 3000K

Street: 4000-4500K

3000K v. 4000K



Existing Corridor Lighting



FIXTURE	A	B
UTL	42"	18.5"

FITTER OPTIONS



FLUTED



SMOOTH

Lighting Themes



Acorn



Pendant
&
Double
Pendant



Acorn



Pendant
&
Double
Pendant



Side Mount



Traditional



Modern

Lighting Themes

Pole & Pole Base



Fluted



Smooth



Rail

Traditional



Modern

A scenic view of a park. In the foreground on the left, a tall, black, traditional-style street lamp stands on a sidewalk. The park features a large green lawn, several trees, and a playground with colorful equipment in the background. A paved path winds through the park, and there are blue handicapped parking signs. In the distance, mountains are visible under a blue sky with scattered white clouds.

Traditional Lighting

Traditional Pendant



Traditional Pendant



Traditional Pendant



Traditional Pendant



Traditional Post Mount



Traditional Post Mount



Traditional Post Mount



Traditional Post Mount



Traditional Pole Base



Traditional Pole Base



Hybrid Lighting



Hybrid Pendant



Hybrid Pendant



Hybrid Pendant



Hybrid Post Mount



Hybrid Post Mount





Modern Lighting

Modern Post Mount



Modern Post Mount



Modern Post Mount



Modern Post Mount



Modern Post Mount



**Existing
Main Street Lighting**

Menti Code: 1656 1463

Lighting Summary

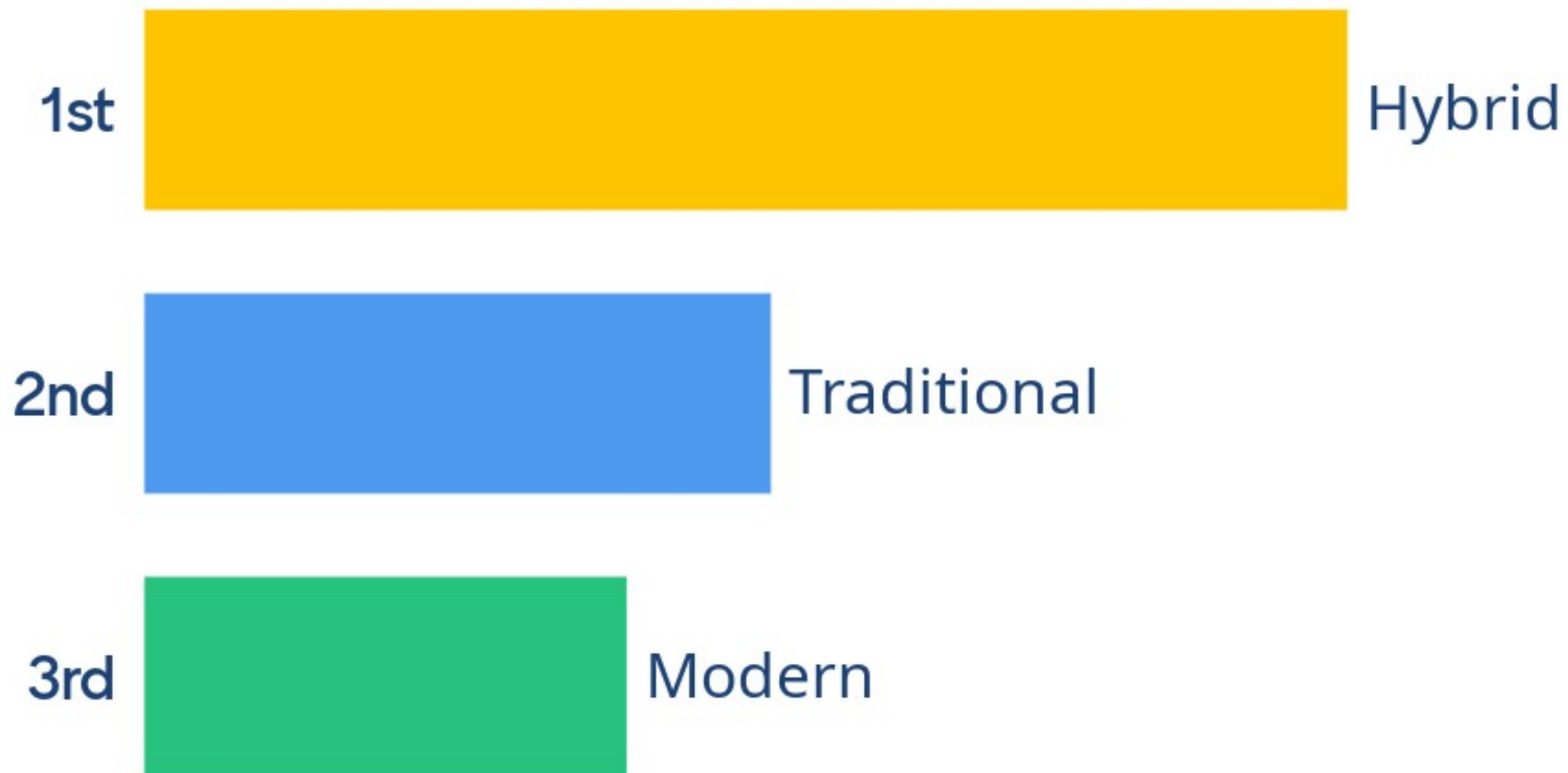


Traditional

Hybrid

Modern

Which lighting theme do you believe most aptly reflects the character and overall aesthetic vision of Spanish Fork Main Street?



Wayfinding Signage



SPANISH FORK
PRIDE & PROGRESS

Material Legend

SPANISH FORK

Shopping <

natural rusted metal

brick base

raw aluminum

precast concrete cap

Corridor Signage: Monuments




City Gateway


Downtown Gateway

Material Legend

SPANISH FORK white acrylic
Shopping <

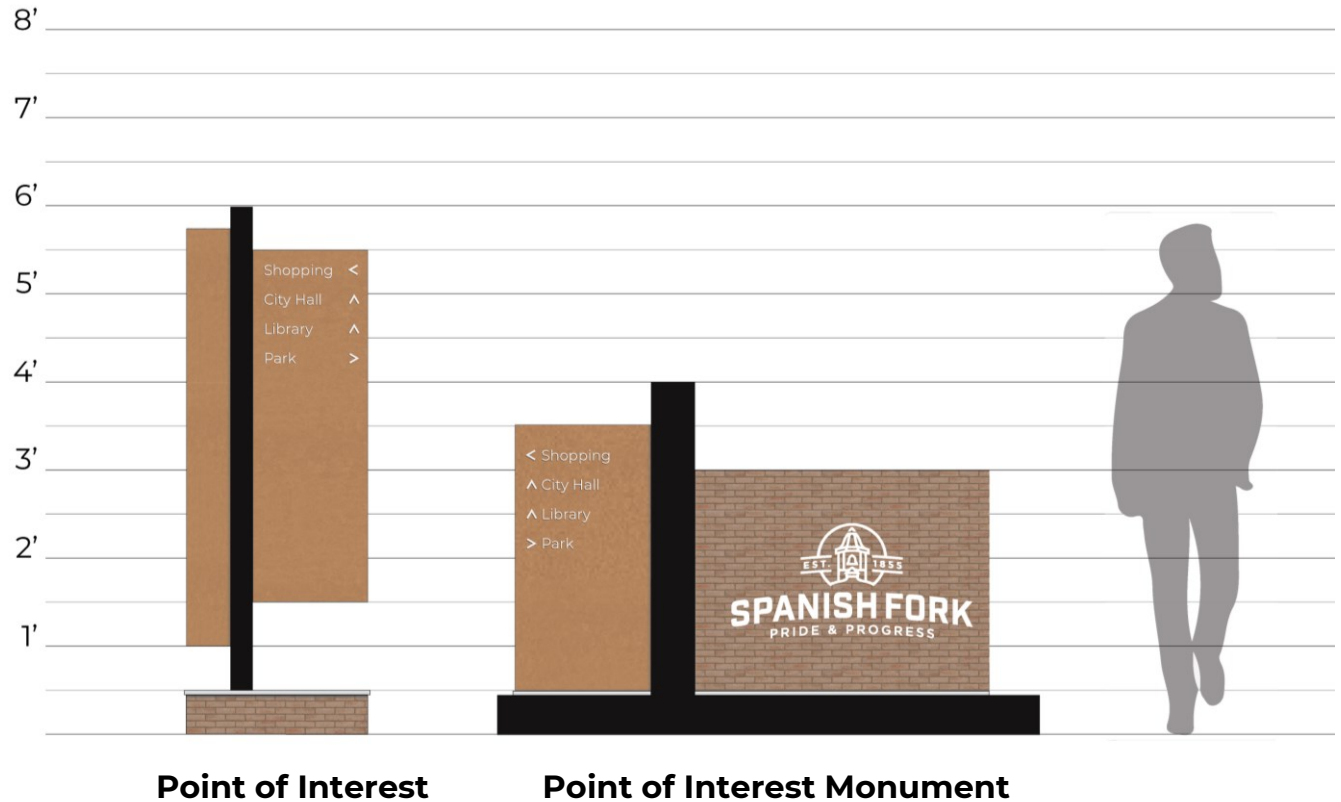
 natural rusted metal

 brick base

 raw aluminum

 precast concrete cap

Corridor Signage: Wayfinding



Material Legend

SPANISH FORK

Shopping <

natural rusted metal

brick base

raw aluminum

precast concrete cap

Off-Corridor Signage

Corridor Signage





Upcoming: Worksession #2

September 17, 2024

Agenda:

1. Roadway Design Criteria
2. Potential Tree Impacts
3. Bus Station Concept Materials
4. Detailed Lighting Options