

At Rocky Mountain Power, we're dedicated to ensuring your safety, especially during wildfire season.

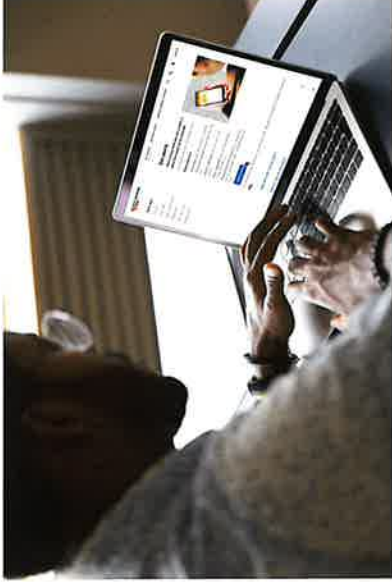
Our teams are in the field year-round, maintaining our system, managing vegetation and working to minimize risks.

Our in-house meteorology team monitors weather conditions 24/7 across our system. Using data from our extensive network of weather stations for daily forecasting and combining it with historic fire risk modeling informs our situational awareness.

This integrated approach enables us to identify risks promptly and take focused action when required, including, in certain specific situations, temporarily shutting off power in targeted areas.



Vegetation management



Wildfire Safety and Resilience



Stay alert. Stay informed. Stay safe.

- Update your contact information and sign up for alerts at RockyMountainPower.net/Alerts or call **1-888-221-7070**.
- Get outage and restoration updates at RockyMountainPower.net/Outages.
- Prepare for outages with tips at RockyMountainPower.net/Prepare.
- Consider backup power options if you have medical needs. Learn more at RockyMountainPower.net/Medical.
- Learn how de-energization can help mitigate the risk of wildfire at RockyMountainPower.net/Deenergize.



Enhanced safety settings

When fire risk is elevated, our enhanced safety settings de-energize power lines in fractions of a second when interference is detected, significantly reducing the chance of ignition.

In these situations, our crews carefully inspect and make any necessary repairs so that power can be safely restored. You can check our outage map for updated restoration times and progress.



Public Safety Power Shutoff

Under certain conditions – such as high temperatures, strong winds and the presence of dry or dead vegetation – something as simple as debris blown onto powerlines can pose a wildfire ignition risk. Public Safety Power Shutoffs are a critical part of our strategy to protect surrounding areas. Relying on real-time data, we carefully assess these factors to determine when we may have to temporarily shut off power in specific areas for a limited time to help ensure the safety of our customers and communities.

In these situations, we will give advance warning via various communication channels. Updates continue throughout the event. Once conditions improve, our field crews inspect and clear lines during daylight hours before safely restoring power.

Emergency de-energization

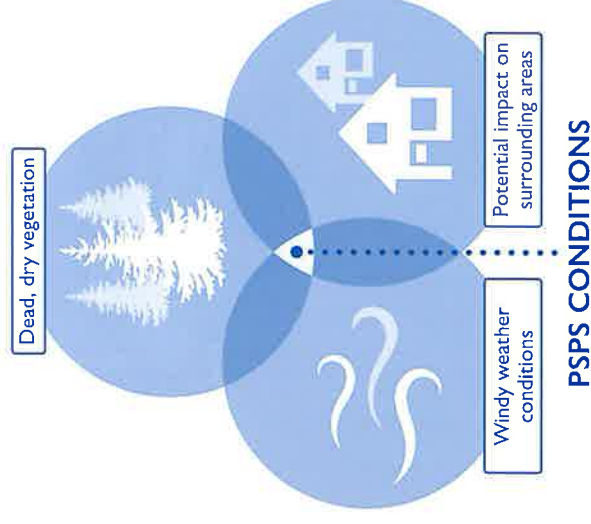
We closely monitor any wildfires burning near our infrastructure, including power lines, poles and substations. If a fire gets close to our equipment, we will take measures to safeguard against its potential impact through a targeted, emergency de-energization to prevent damage to our facilities and the surrounding environment and to protect first responders.

A GROWING NETWORK OF SENSORS

We have installed sensors on our lines to detect faults and pinpoint potential problems, using built-in cellular modems to deliver real-time updates. We've placed these devices on some circuits within our highest fire risk services areas. We continue to evaluate new areas for deployment.

REAL-TIME MONITORING

- Temperature
- Humidity
- Wind speed and direction
- Fuel sources on the ground



PSPS CONDITIONS



Advanced recloser control