

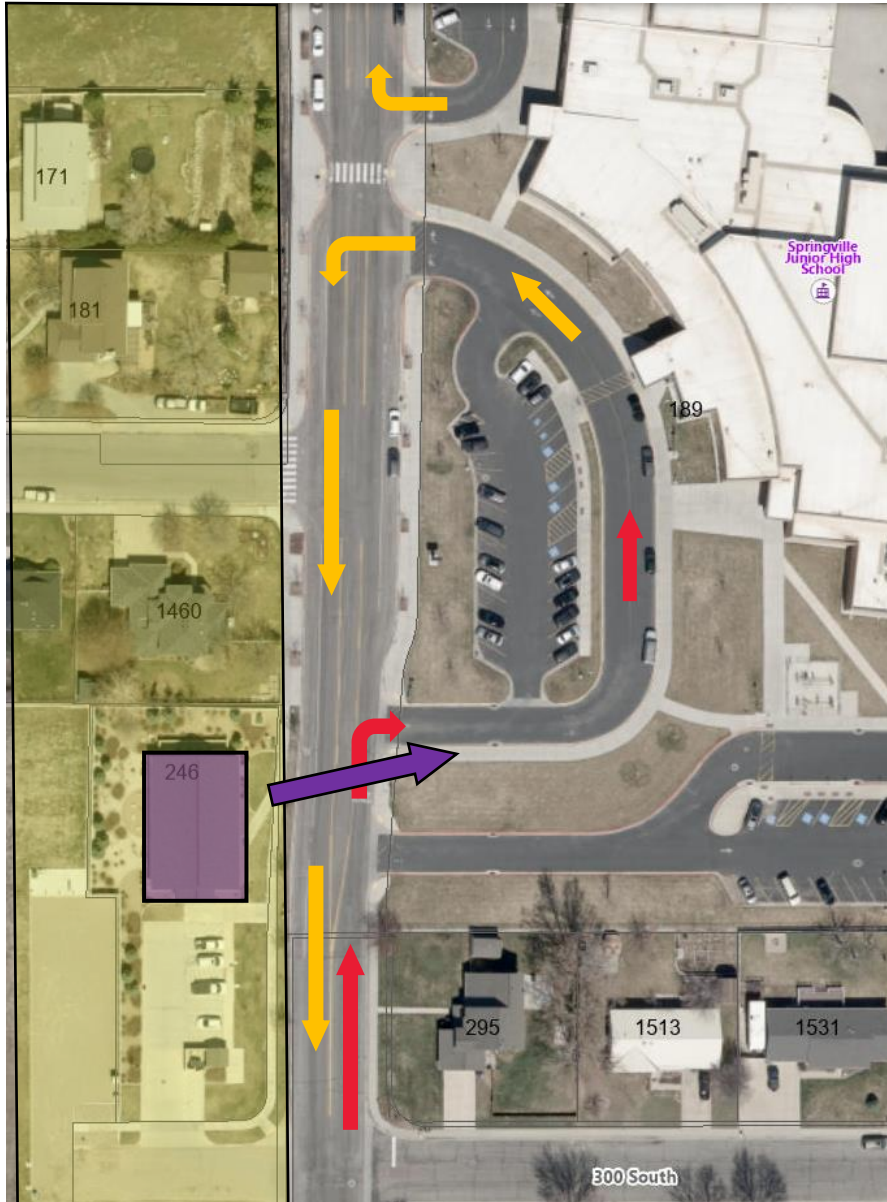
PUBLIC WORKS

PROJECT UPDATES AND
620 SOUTH & CANYON ROAD
INTERSECTION RECOMMENDATION





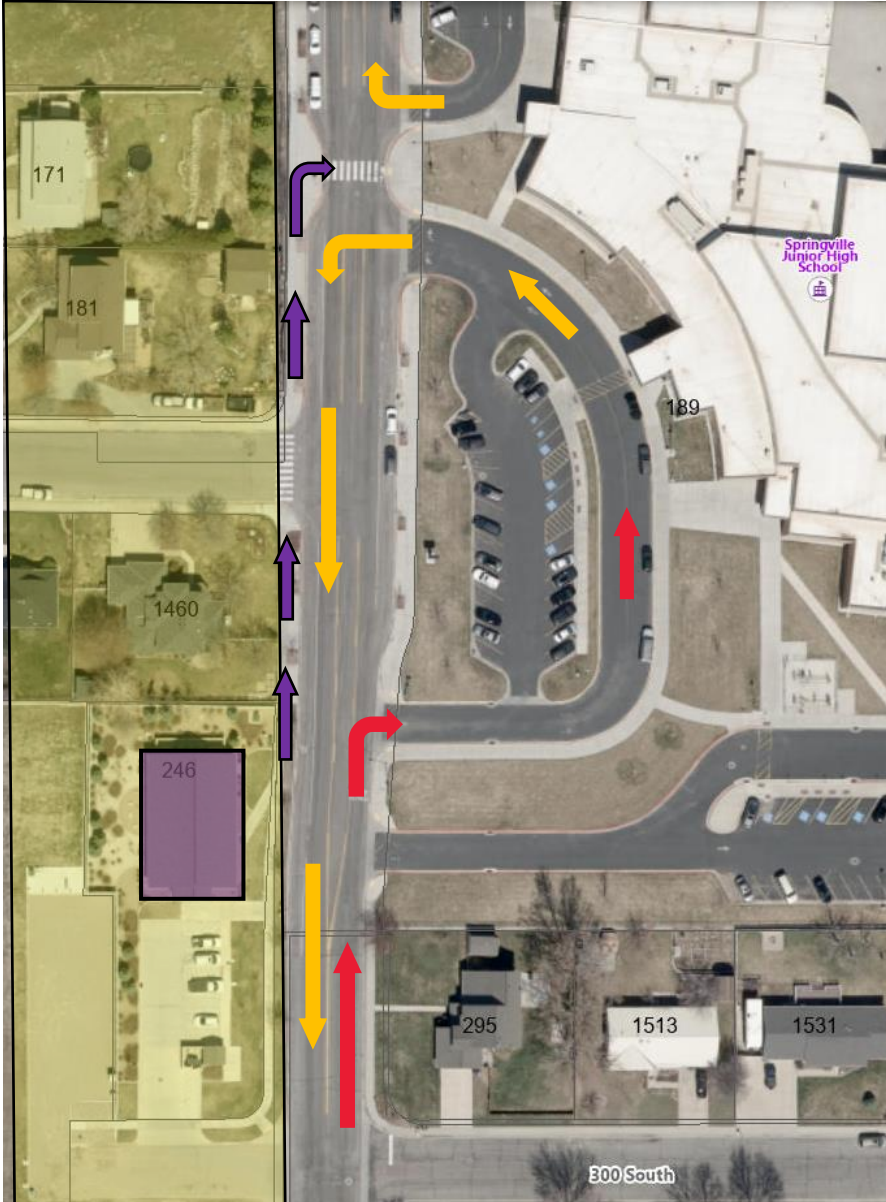
SPRINGVILLE JR. HIGH - TRAFFIC & PEDESTRIAN FLOW



- Students crossing roadway in front of seminary severely inhibits pick-up/drop-off traffic movement.
- Significant traffic back-up ensues all the way to the roundabout.
- Serious Pedestrian/Vehicle safety issue.



SPRINGVILLE JR. HIGH - TRAFFIC & PEDESTRIAN FLOW



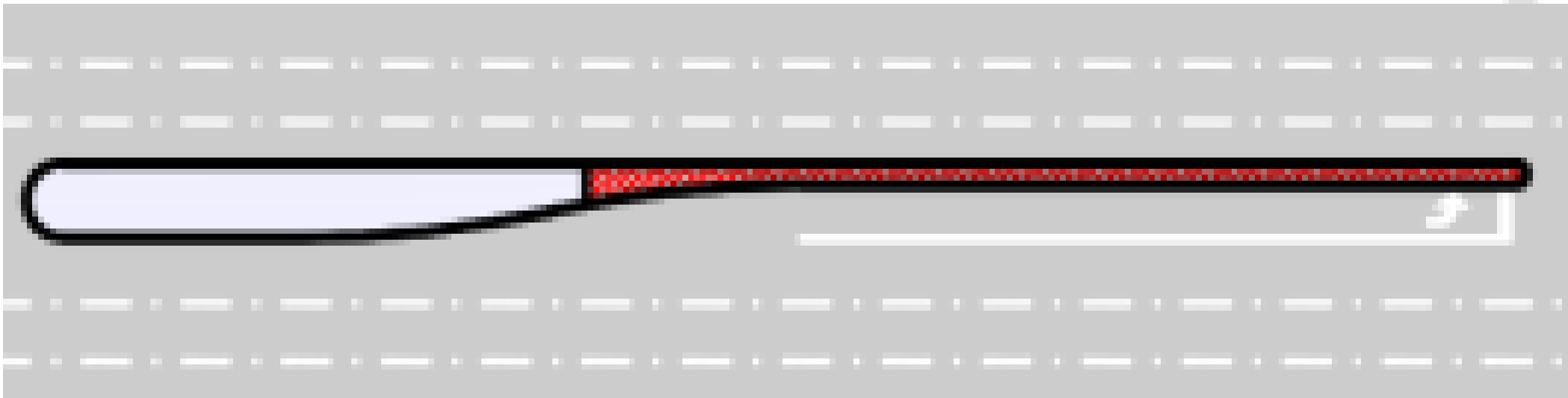
- Staff progress to remedy issue:
 - Education - Nebo School District & Seminary leadership - completed
 - Signs - “No Pedestrian Crossing” and/or “Use Crosswalk” - signs ordered
 - Fence inhibiting “jay-walking” - if necessary



400 SOUTH ALLEN'S BLOCK SAFETY MEDIAN

Raised Concrete Median Discussion

- Numerous email correspondence
- Meeting with UDOT July 10th



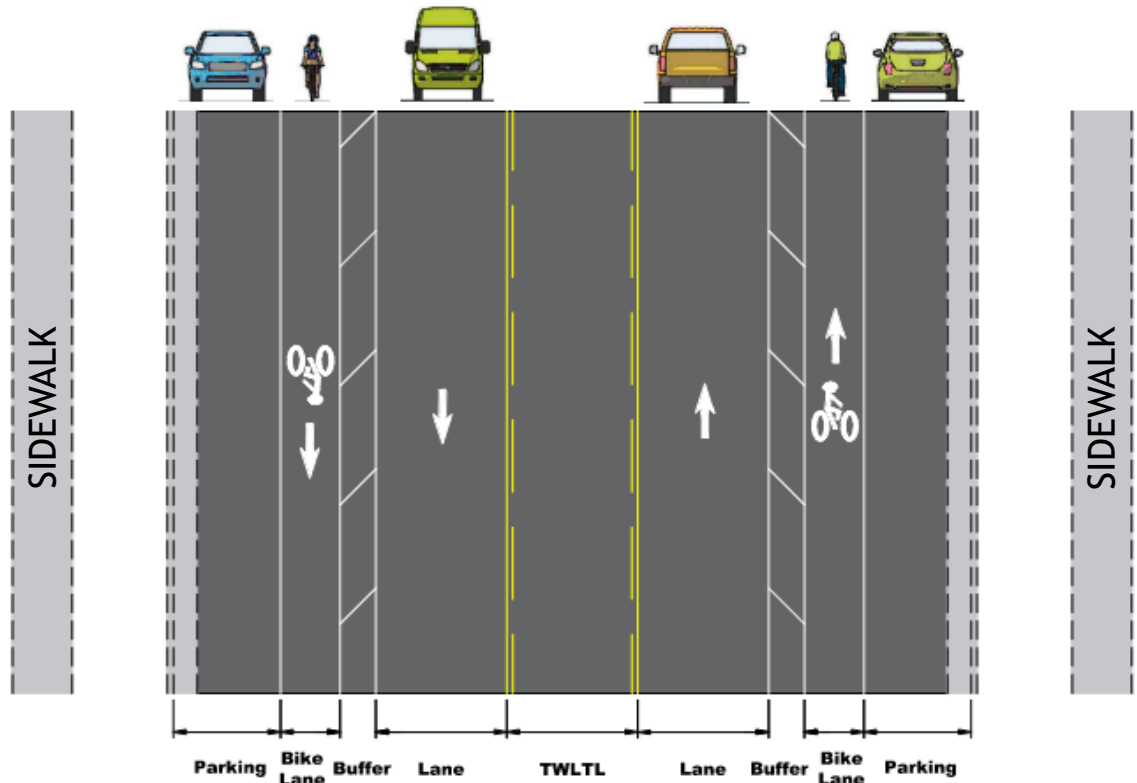


STREET MICRO-SURFACING

Micro-Surfacing paving is complete

- Paint Striping in-process
- Active Transportation component initiated
 - 1750 West
 - 400 East
- Public Open House Held June 27th - Civic Center

BUFFERED BIKE LANE CROSS-SECTION
400 EAST - 1400 North to 200 North

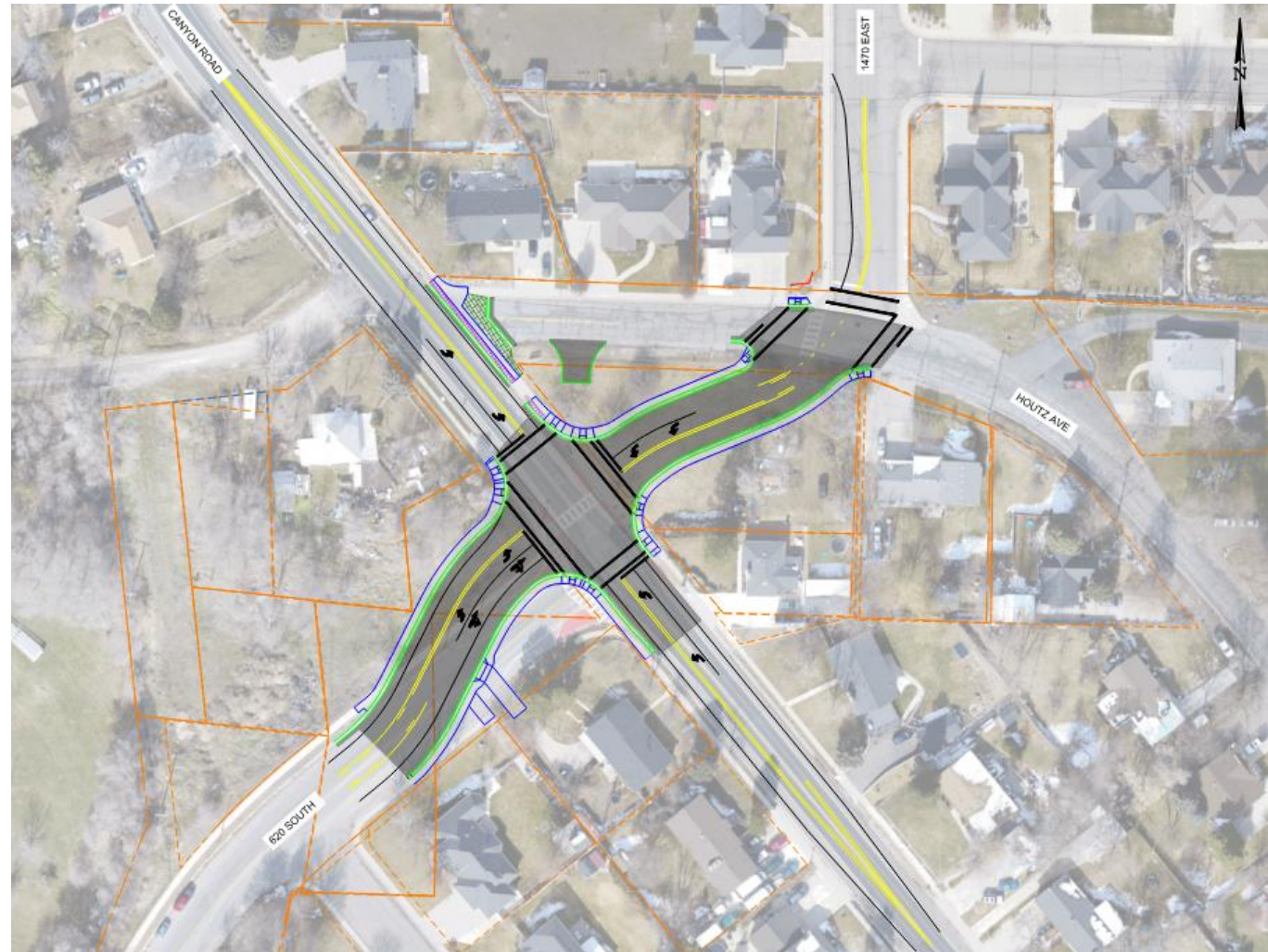




620 SOUTH & CANYON ROAD INTERSECTION

Design Options

- Roundabout
 - \$2.2M (w/o property acquisition)
 - Four separate property acquisitions
- Traditional 4-way Stop Intersection
 - \$991K
 - No property acquisition

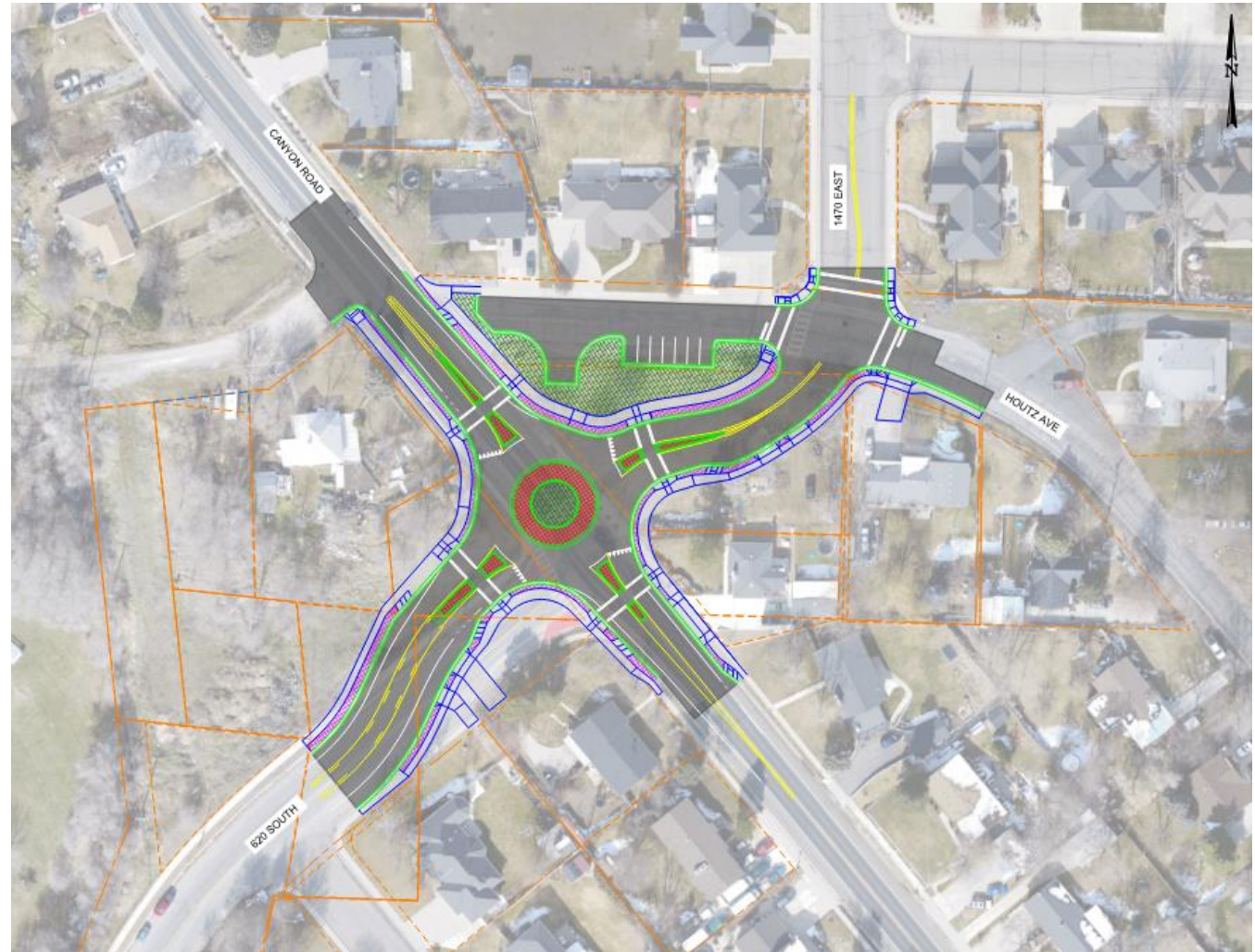




620 SOUTH & CANYON ROAD INTERSECTION

Citizen Concerns

- Roundabout
 - Impedes on to private property
 - Existing driveway access
 - Pedestrian safety - RRFB's
- Lowers property value
- Secondary driveway access
- Lower speed limit (35 mph to 30 mph)

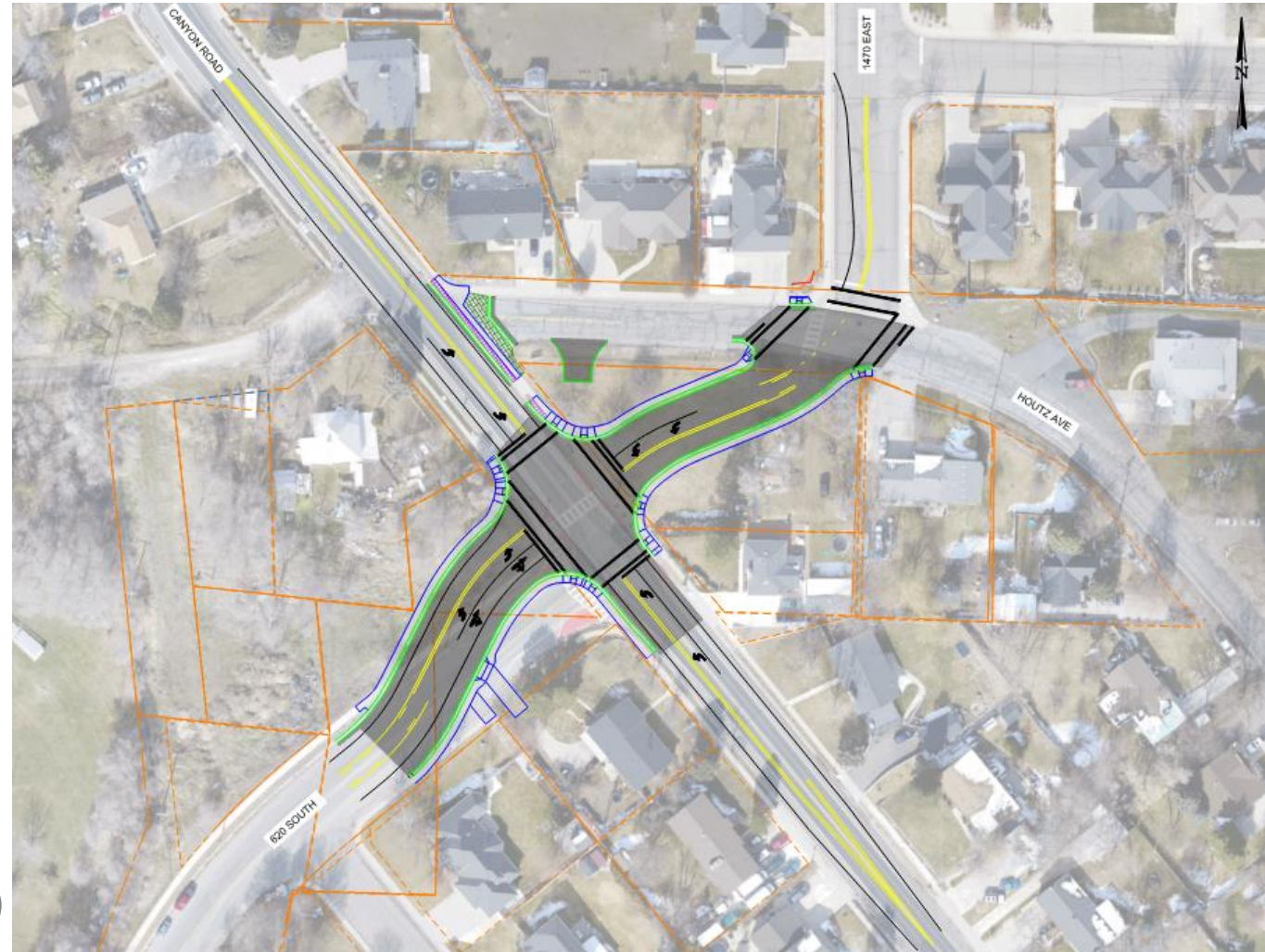


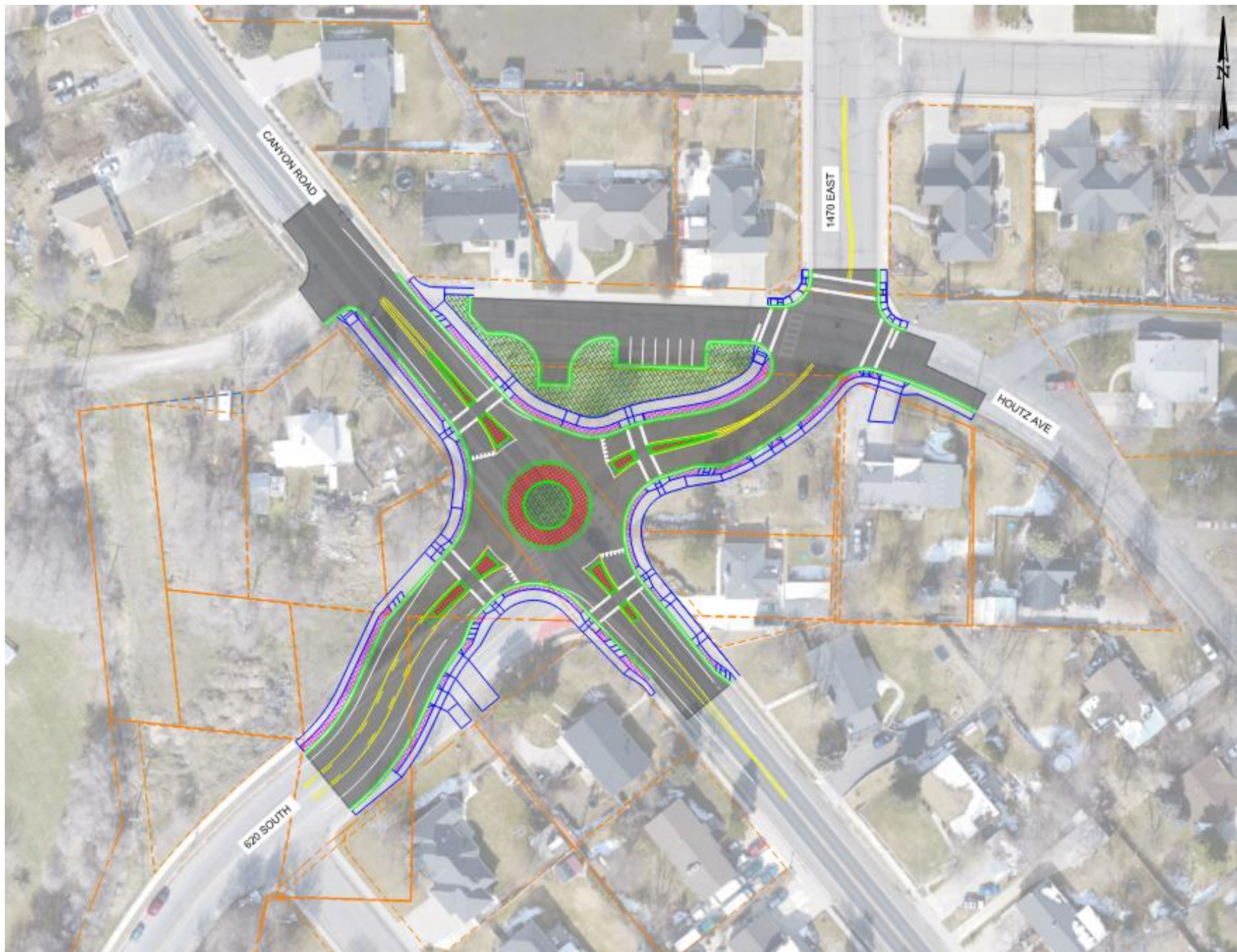


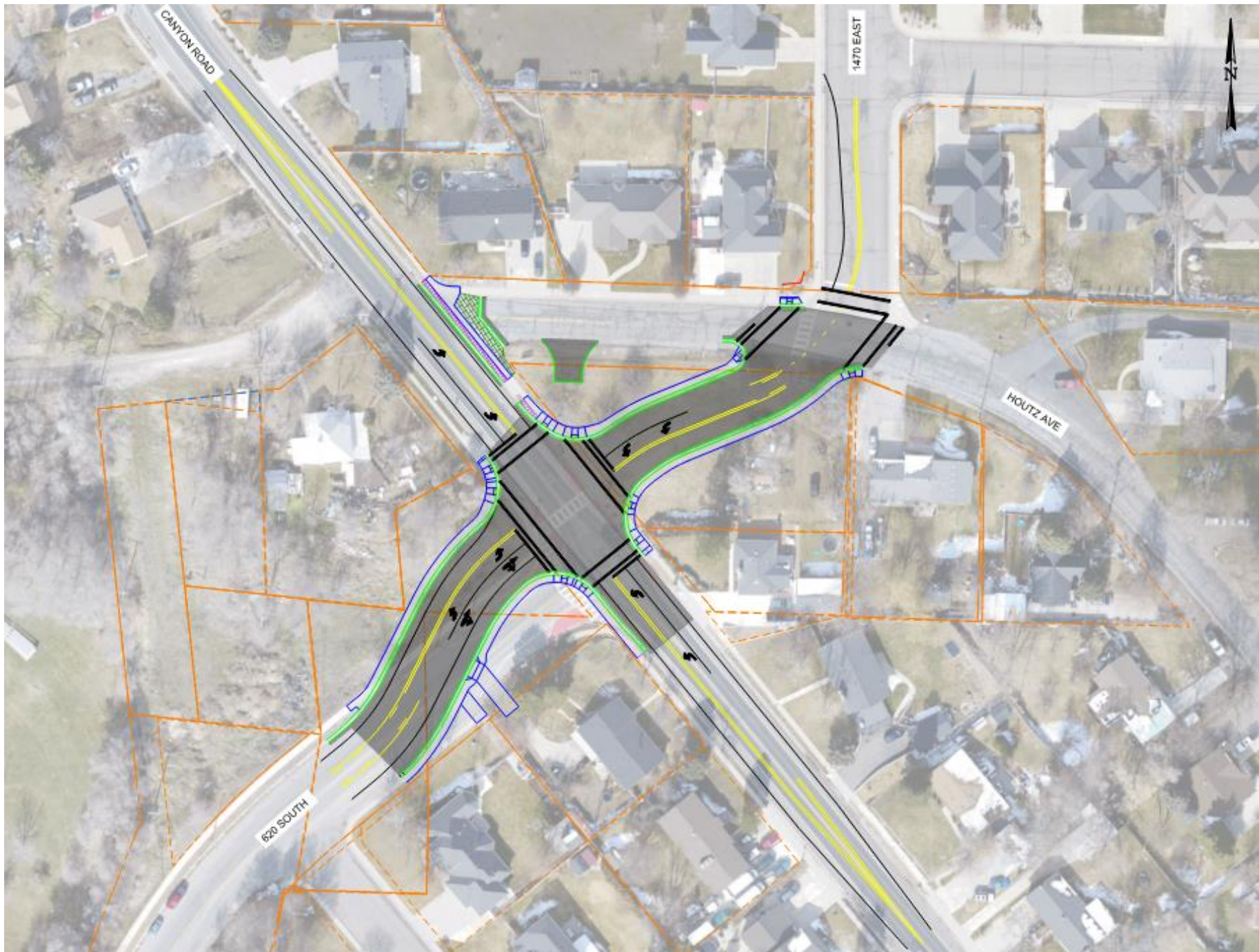
620 SOUTH & CANYON ROAD INTERSECTION

Citizen Concerns

- Traditional Intersection
 - Existing driveway access
 - Pedestrian safety
 - RRFB on Canyon Road crosswalks
 - Traffic signal
- Lowers property value
- Secondary driveway access
- Lower speed limit (35 mph to 30 mph)





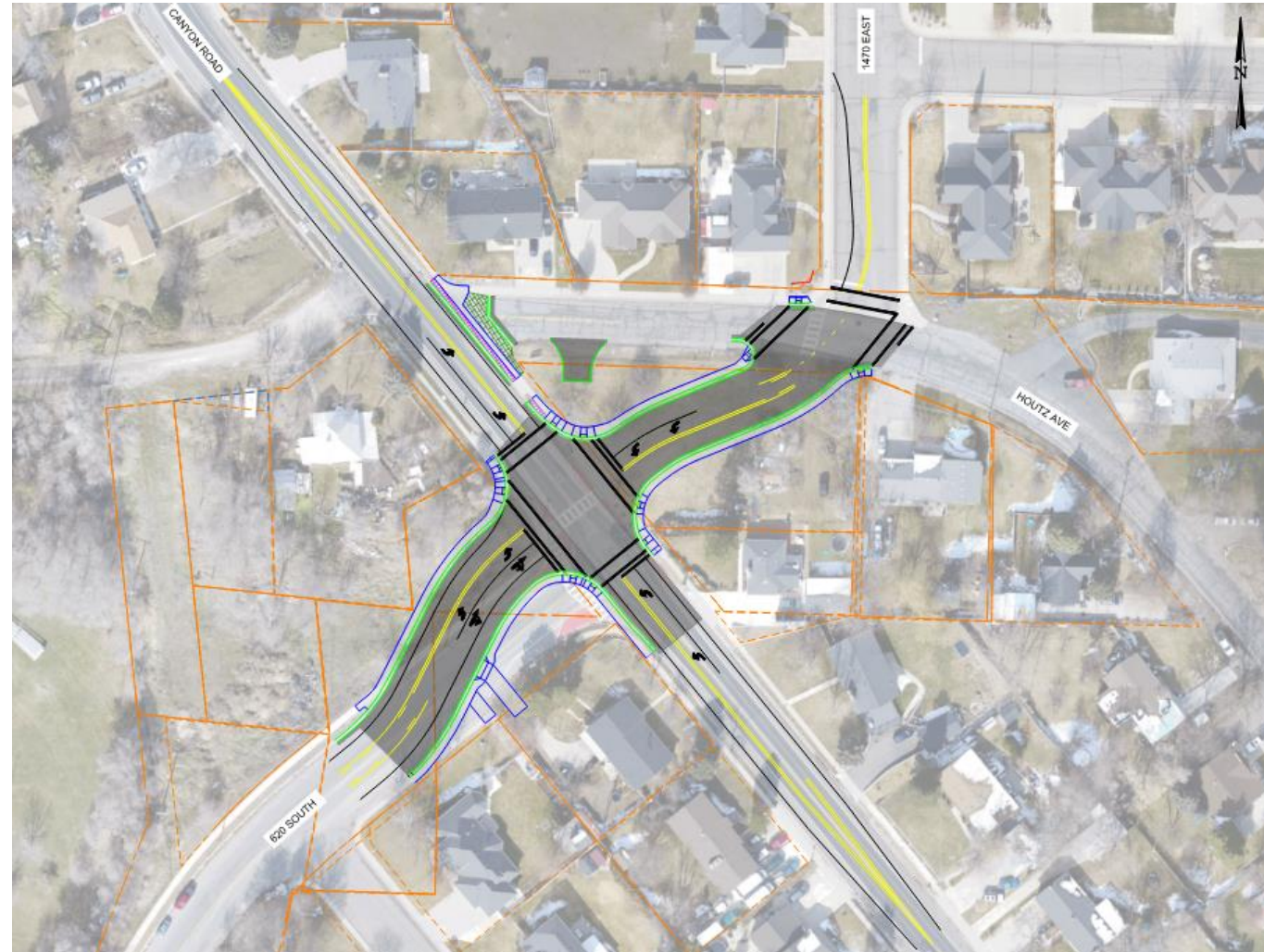




620 SOUTH & CANYON ROAD INTERSECTION

Next Steps

- Full Design
- Construct by end of October
- Additional traffic studies
 - 4-way vs 2-way on Canyon Road
 - Extended Speed Limit study
- Active Transportation component
 - West side of roadway to high school



PUBLIC WORKS

PROJECT UPDATES AND
620 SOUTH & CANYON ROAD
INTERSECTION RECOMMENDATION



QUESTIONS?