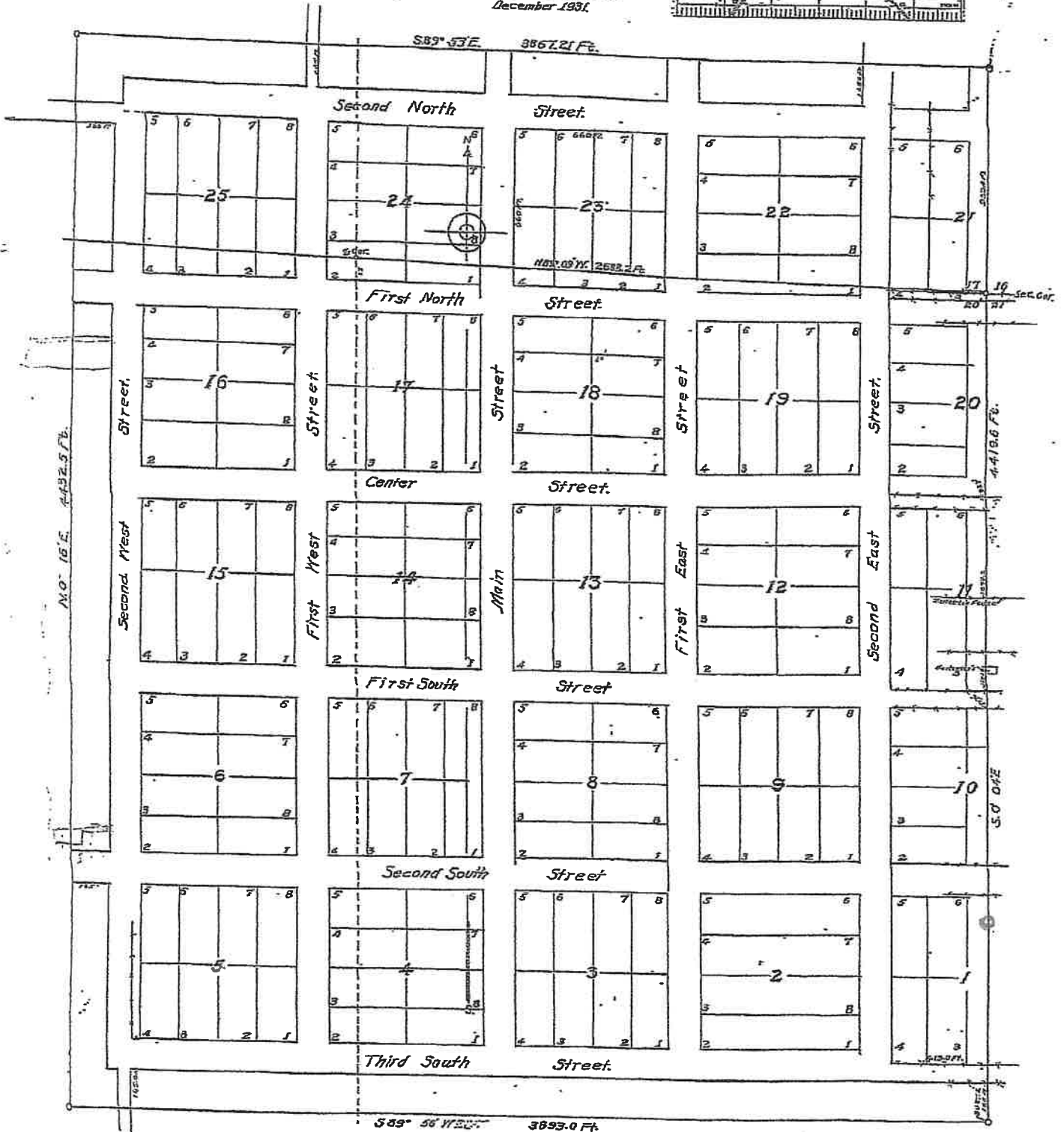
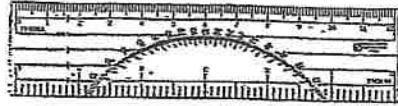


Red \circ on Each
Map is same point
and is 56 Feet
From East Fence Line
of Star Koyle.
Photo of Survey
Marker \downarrow



MAP
OF
KANOSH
SHOWING
ITS
BOUNDARY SURVEY

BY
F.M. Lyman, Jr.
County Surveyor.
Scale: 200 Feet = 1 Inch.
December 1891.

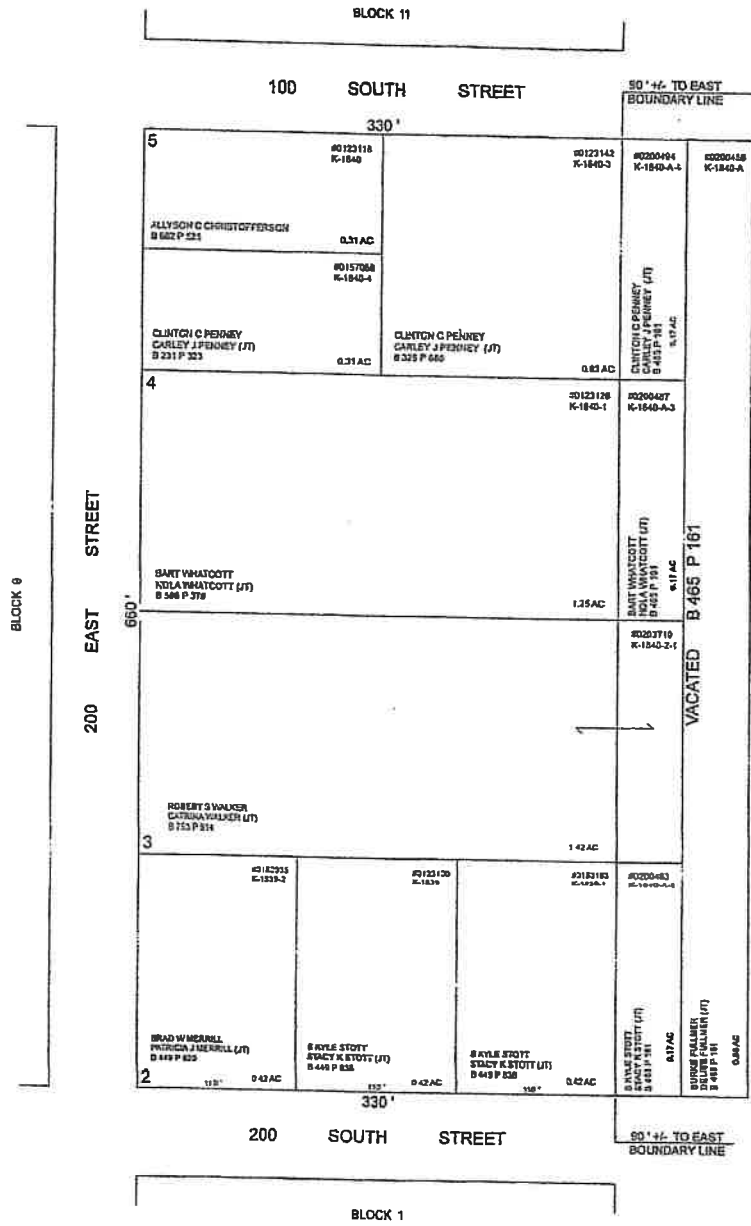


KANOSH PLAT - A BLOCK 10

(3)

BOOK 1 PAGE 139
SCALE 1"=60'
DECEMBER 28, 2023

THIS PLAT IS MADE SOLELY FOR THE PURPOSE
OF ASSISTING IN LOCATING THE LAND AND
THE RECORDER ASSUMES NO LIABILITY FOR
VARIATION IF ANY WITH AN ACTUAL SURVEY



NOTES
STREETS ARE APPROX 132 FT WIDE

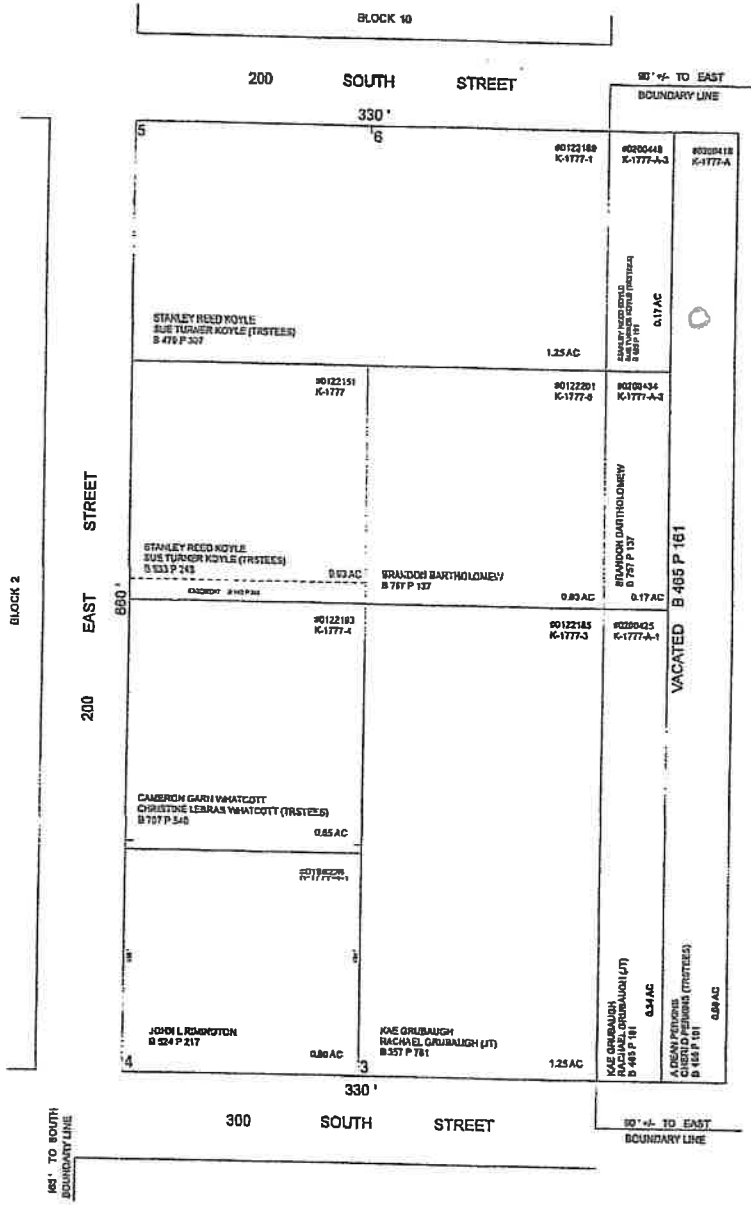
BOOK 1 PAGE 139
KANOSH, PLAT - A
BLOCK 10

KANOSH PLAT - A BLOCK 1

(3)

BOOK 1 PAGE 130
SCALE 1"=60'
APRIL 03, 2024

THIS PLAT IS MADE SOLELY FOR THE PURPOSE
OF ASSISTING IN LOCATING THE LAND AND
THE RECORDER ASSUMES NO LIABILITY FOR
VARIATION IF ANY WITH AN ACTUAL SURVEY



NOTES
STREETS ARE APPROX 132 FT WIDE

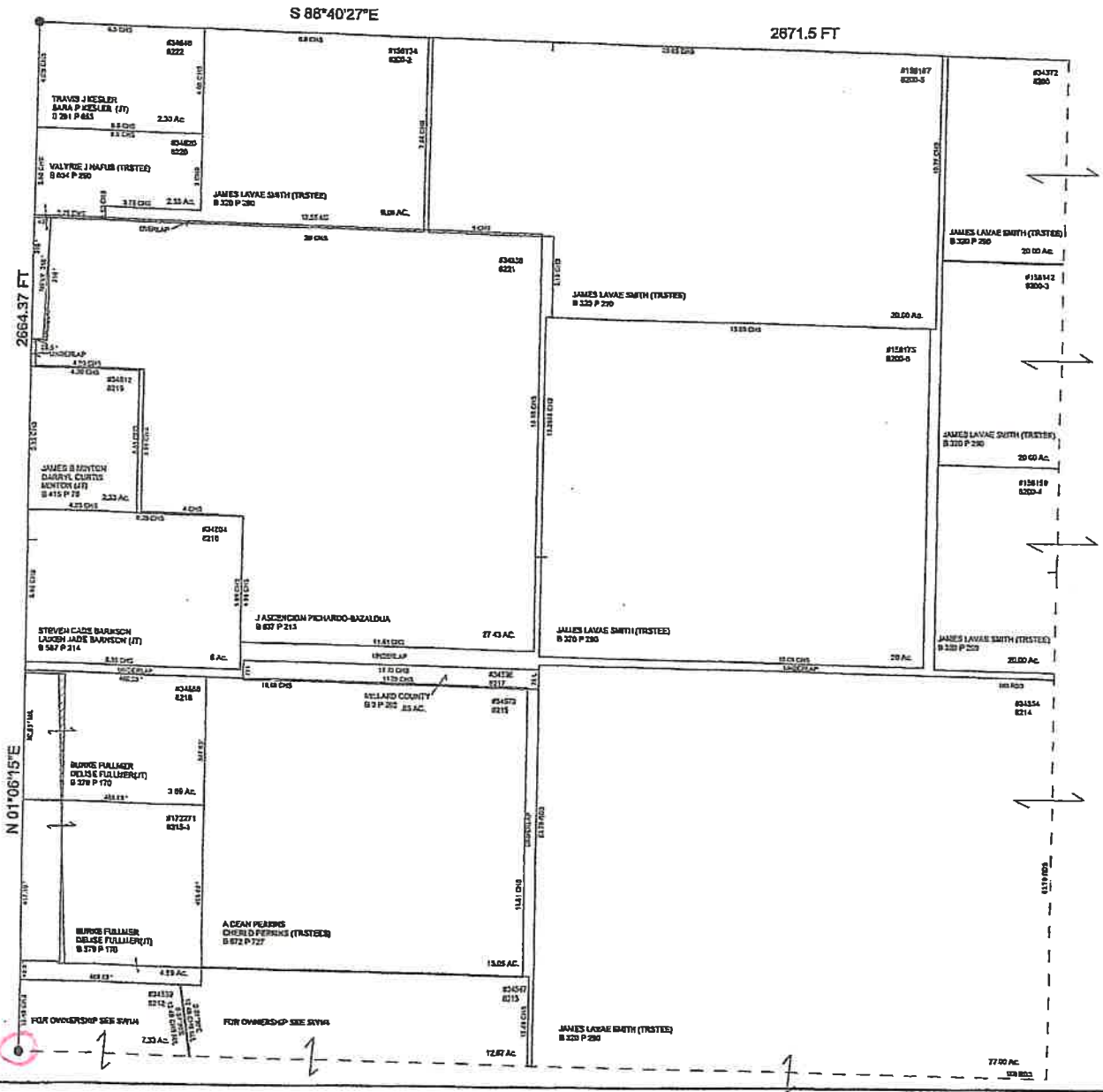
BOOK 1 PAGE 130
KANOSH, PLAT - A
BLOCK 1

NW/4 SECTION 21, T 23 S, R 5 W S.L.B. & M.

(6)

BOOK 23 PAGE 31
SCALE: 1" = 200'
FEBRUARY 24, 2021

THIS PLAT IS MADE SOLELY FOR THE PURPOSE OF ASSISTING IN LOCATING THE LAND, AND THE RECORDER ASSUMES NO LIABILITY FOR VARIATIONS, IF ANY, WITH AN ACTUAL SURVEY.



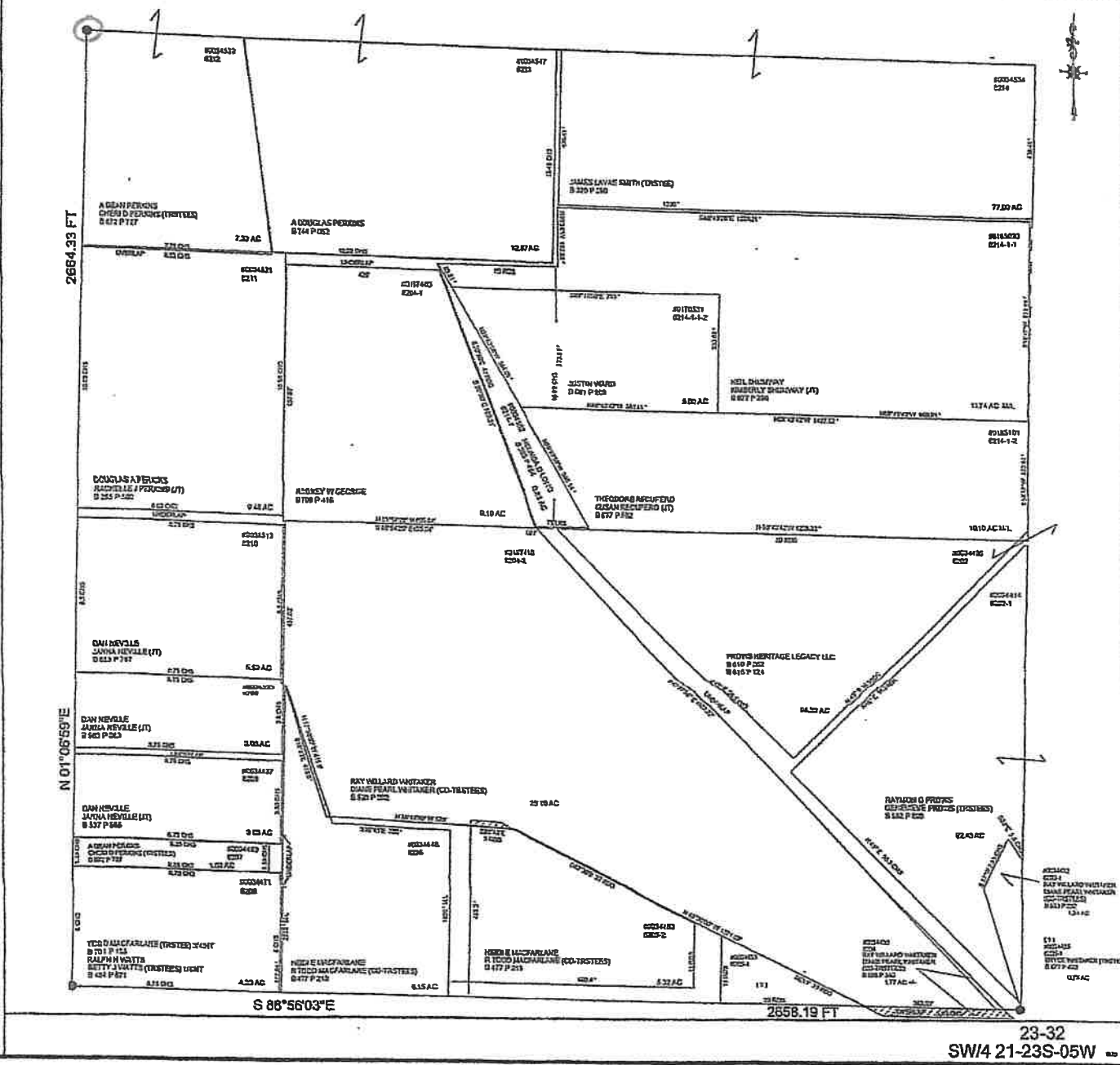
23-31
NW/4 21-23S-05W

(6)

BOOK 23 PAGE 32
SCALE: 1" = 200'
MAY 15, 2023

SW/4 SECTION 21, T 23 S, R 5 W S.L.B. & M.

THIS PLAT IS MADE SOLELY FOR THE PURPOSE
OF ASSISTING IN LOCATING THE LAND, AND
THE RECORDER ASSUMES NO LIABILITY FOR
VARIATIONS, IF ANY, WITH AN ACTUAL SURVEY.



SE/4 SECTION 20, T 23-S, R 5 W S.L.B. & M.

(3)(6)

BOOK 23 PAGE 29
SCALE: 1" = 200'
MARCH 4, 2022

THIS PLAN IS MADE SOLELY FOR THE PURPOSE
OF ASSISTING IN LOCATING THE LAND, AND
THE RECORDER ASSUMES NO LIABILITY FOR
VARIATIONS, IF ANY, WITH AN ACTUAL SURVEY.

