

Electric Vehicle & Dark Sky Updates

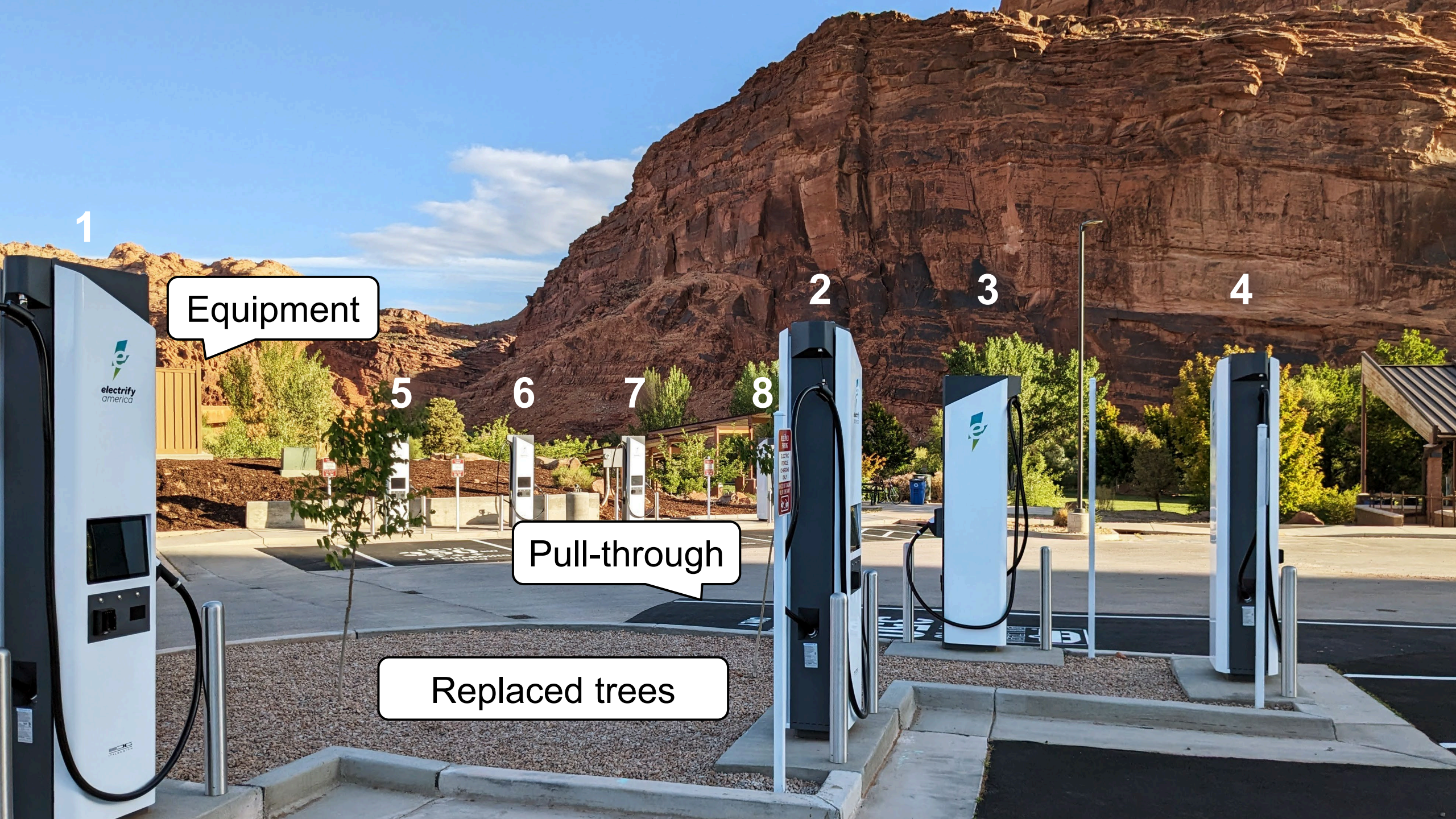
May 2024





electrify
america

EV CHARGING STATION
ELECTRIC VEHICLE CHARGING ONLY
NO OTHER VEHICLES
NO PARKING



1

Equipment

2

3

4

5

6

7

8

Pull-through

Replaced trees

Rocky Mountain Power

Electric Service Schedule No. 60

for the State of Utah

	Non-RMP Customer	RMP Customer (Moab residents, etc.)
DC Fast Charging	\$0.45 per kWh	\$0.27 per kWh
Off-Peak Credit*	-\$0.05 per kWh	
Session fee	\$1.00	
*Times that are NOT:	Cooler Months: Oct-May, inclusive 8-10:00 AM and 3-8 PM, Mon-Fri, except holidays Warmer Months: June-Sept, inclusive 3-8 PM, Mon-Fri, except holidays	



Dark Sky Community

Progress Update | May 2024



MOAB, UTAH
May 2024



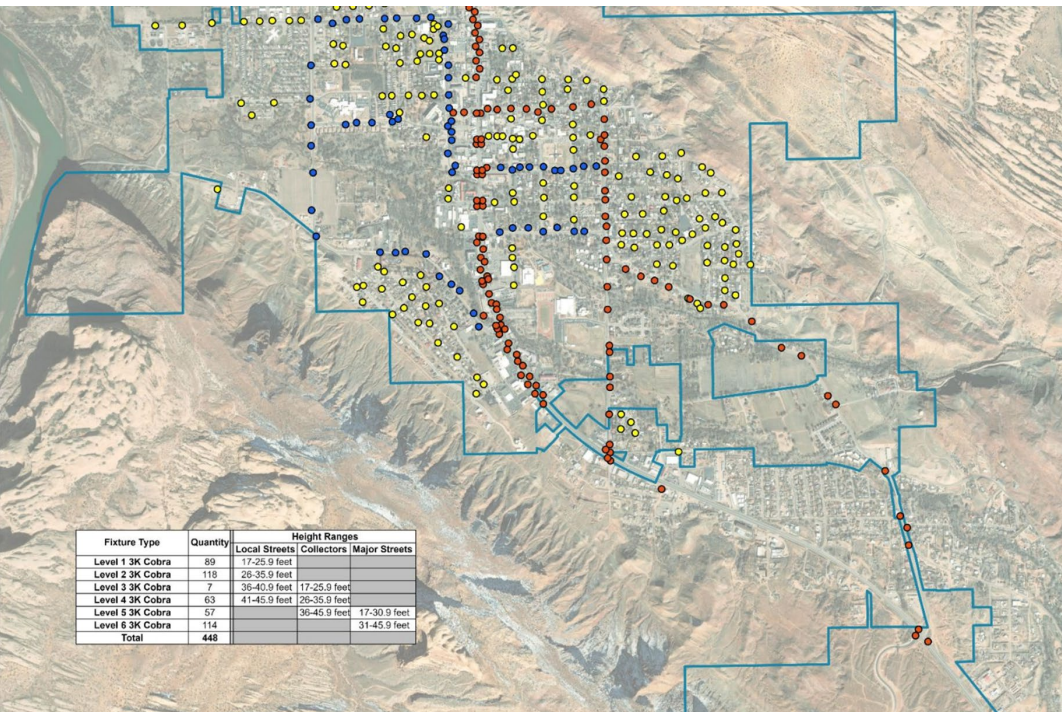
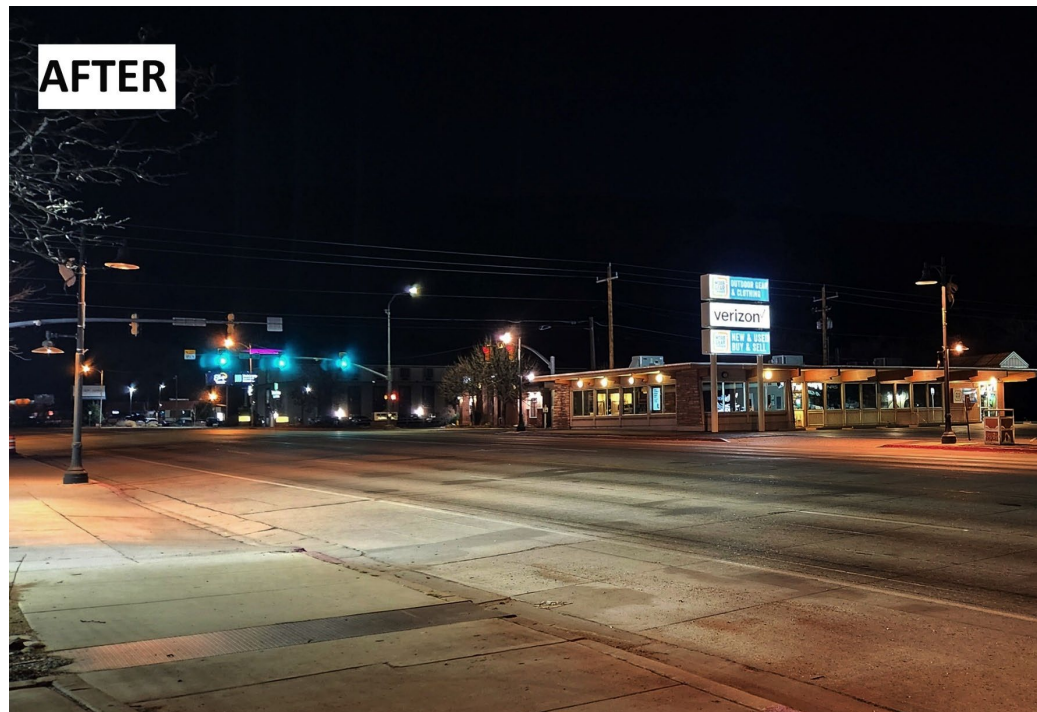
Category	Requirements
City code	<ul style="list-style-type: none"> ✓ Lighting code meets minimum requirements <ul style="list-style-type: none"> ○ 3000K max ○ Shielded ○ Amortization period ○ Addresses signs, outdoor recreation, etc.
City compliance plan	<ul style="list-style-type: none"> ✓ Streetlights <ul style="list-style-type: none"> ○ City-owned ○ Utility-owned ✓ City properties ✓ Community outreach/incentive
Community support	<ul style="list-style-type: none"> ✓ Nomination ✓ Letters of support
Education	<ul style="list-style-type: none"> ✓ Two events ✓ Photos of events ✓ Documentation of outreach
Evidence of light pollution control	<ul style="list-style-type: none"> ✓ Documentation of changes <ul style="list-style-type: none"> ○ City ○ Residential ○ Businesses
Measurement program	<ul style="list-style-type: none"> ✓ Track sky quality ✓ Volunteer program

City Compliance

BEFORE



AFTER



Fixture Type	Quantity	Height Ranges		
		Local Streets	Collectors	Major Streets
Level 1 3K Cobra	89	17-25.9 feet		
Level 2 3K Cobra	118	26-35.9 feet		
Level 3 3K Cobra	7	36-40.9 feet	17-25.9 feet	
Level 4 3K Cobra	63	41-45.9 feet	26-35.9 feet	
Level 5 3K Cobra	57		36-45.9 feet	17-30.9 feet
Level 6 3K Cobra	114			31-45.9 feet
Total	448			

City Compliance

- Nuisance Lighting
- New Construction
- Renovation
- Legal, Non-Conforming
- Amortization

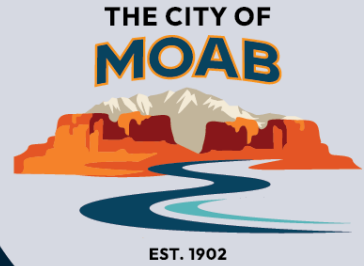


Community Compliance

- Nuisance Lighting
- New Construction
- Renovation
- Legal, Non-Conforming
- Amortization

Better Night Light

Join the City of Moab with updated lights



1 Necessity— place light where it's needed

2 Amount— choose the right brightness

3 Direction— point light downward

4 Time— turn off non-conforming lights at 10 PM
and commercial light an hour after close

5 Color— embrace a warm white glow (3000 Kelvin or less)



Visit moabcity.org/sustainability
or see Moab Municipal Code 17.09.060-17.09.069 for details.

OUTDOOR LIGHTING RETROFIT PROGRAM

IN PARTNERSHIP WITH GRAND COUNTY AND THE CITY OF MOAB



OUTDOOR LIGHTING RETROFIT ASSISTANCE PROGRAM

This program provides financial help and resources to full-time Moab City and Grand County residents so that they may acquire code-compliant exterior lighting fixtures and bulbs for their homes.

RECEIVE UP TO \$200.00 FOR DARK SKY FRIENDLY
OUTDOOR LIGHTING FIXTURES!

You must meet the following criteria to receive assistance:

- Be a full-time Moab City or Grand County resident
- Live in the home where fixtures will be installed
- Be responsible for installing fixtures (you will be reimbursed after fixtures are installed)
- Labor costs may be applied (installer must be verifiable business or sole proprietor)
- Any income level can receive up to \$100
- Households that fit into the highlighted row in the chart below can receive up to \$200

Priority will be given to those who have a greater financial need.

Celebrate

Arts & Ag

June 7, 5-8 PM

Swanny Park

+ **AstroFest**

+ June 7-9, 9:30-11:30 PM

+ Different park each night

Dark Sky-theme Skate

June 15, 6-8 PM

Sun Court



Bryan Haile