

300 W Corridor

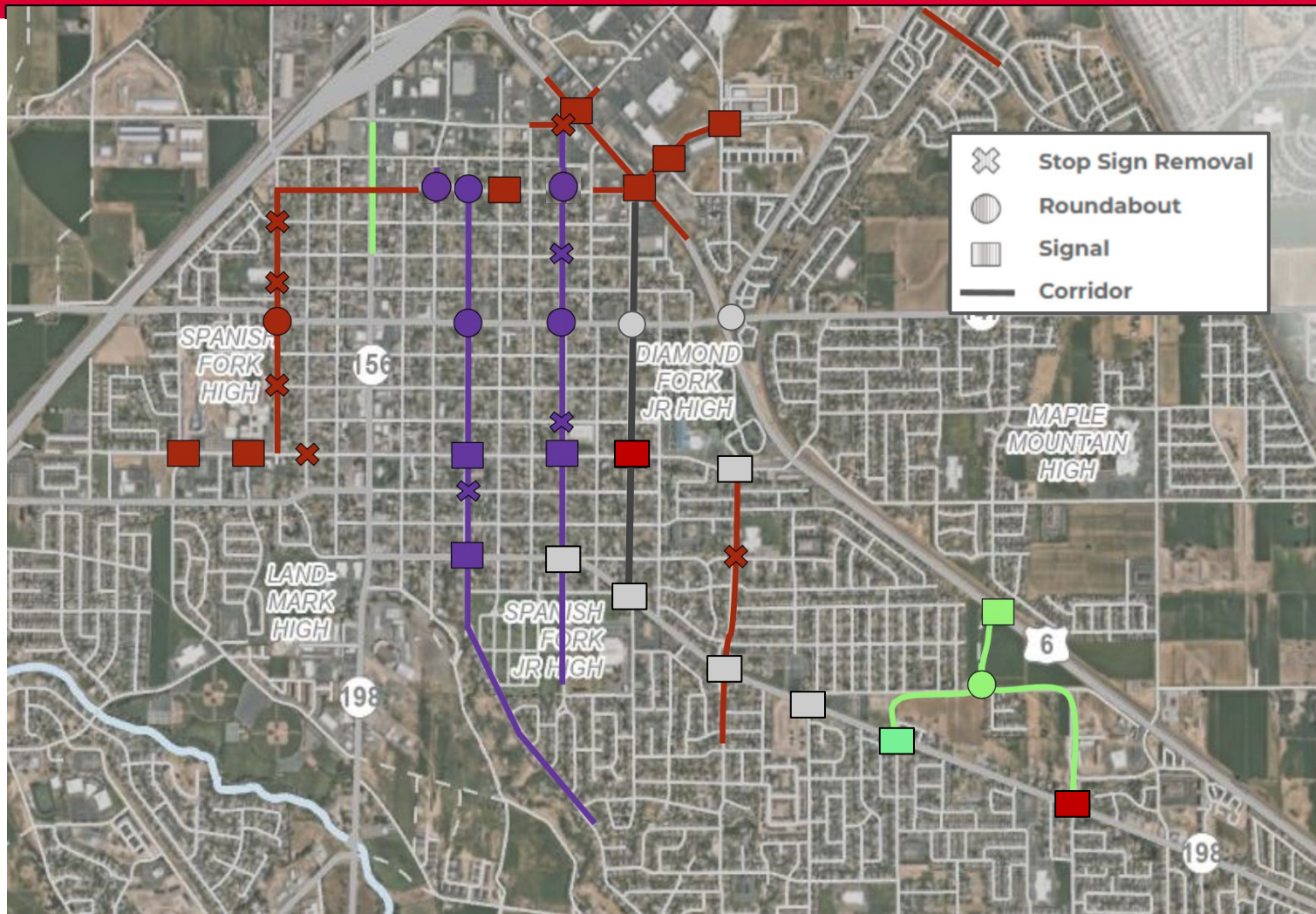
-83 ft Pavement

-Connects to
Scenic Dr

-Eventually into
River Bottoms

-3 Block Spacing

-Feeds 200 E &
400 E - Maceys,
Costco, &
Restaurant Area





DO NOT
BLOCK
INTERSECTION



800 N

800 N

300 E

500 E

600 E

Main St.

1000 N

900 N

200 E

400 E

US 6

I-45N

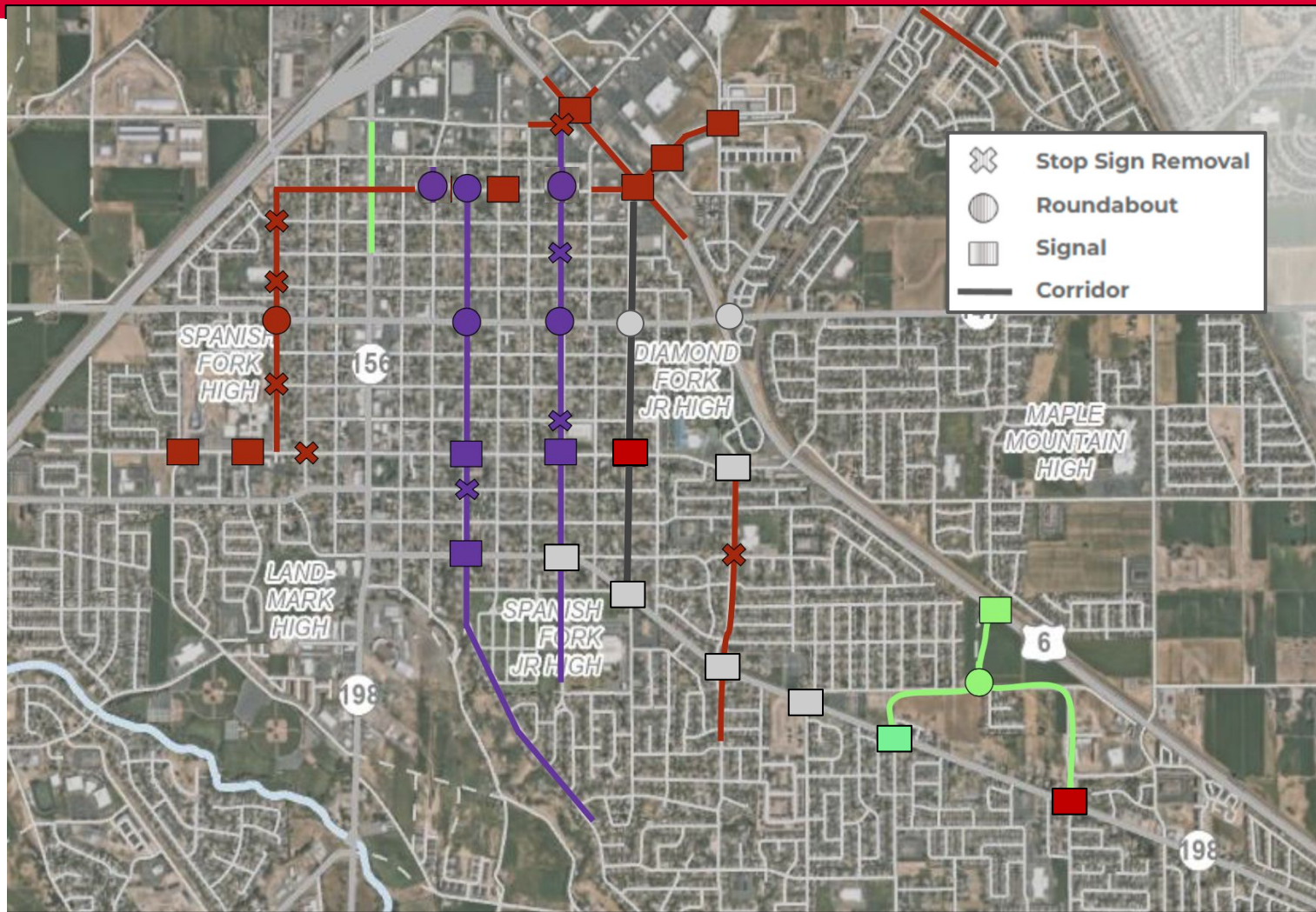
Why Roundabouts

400 N need continuous flow northbound

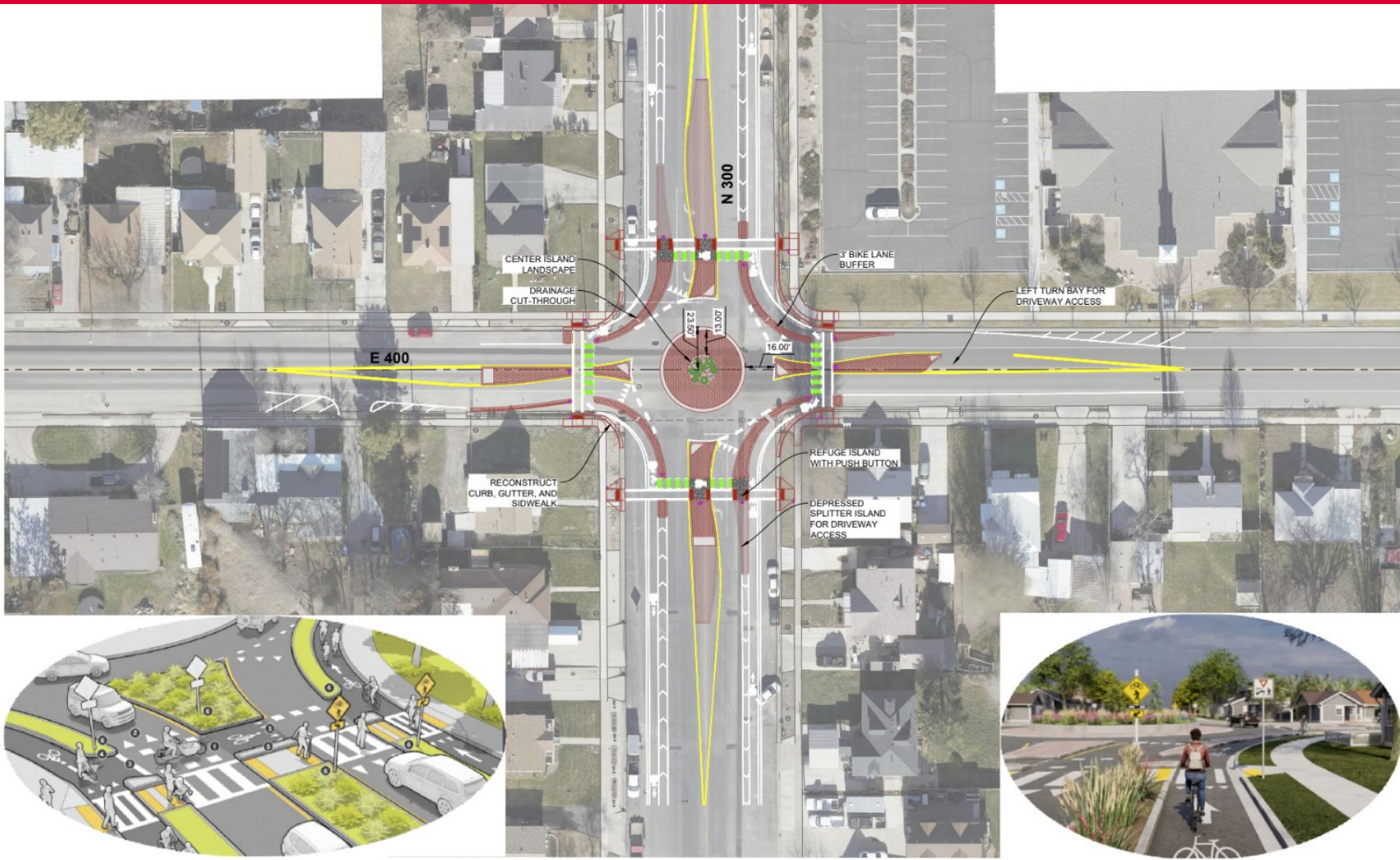
Traffic Calming

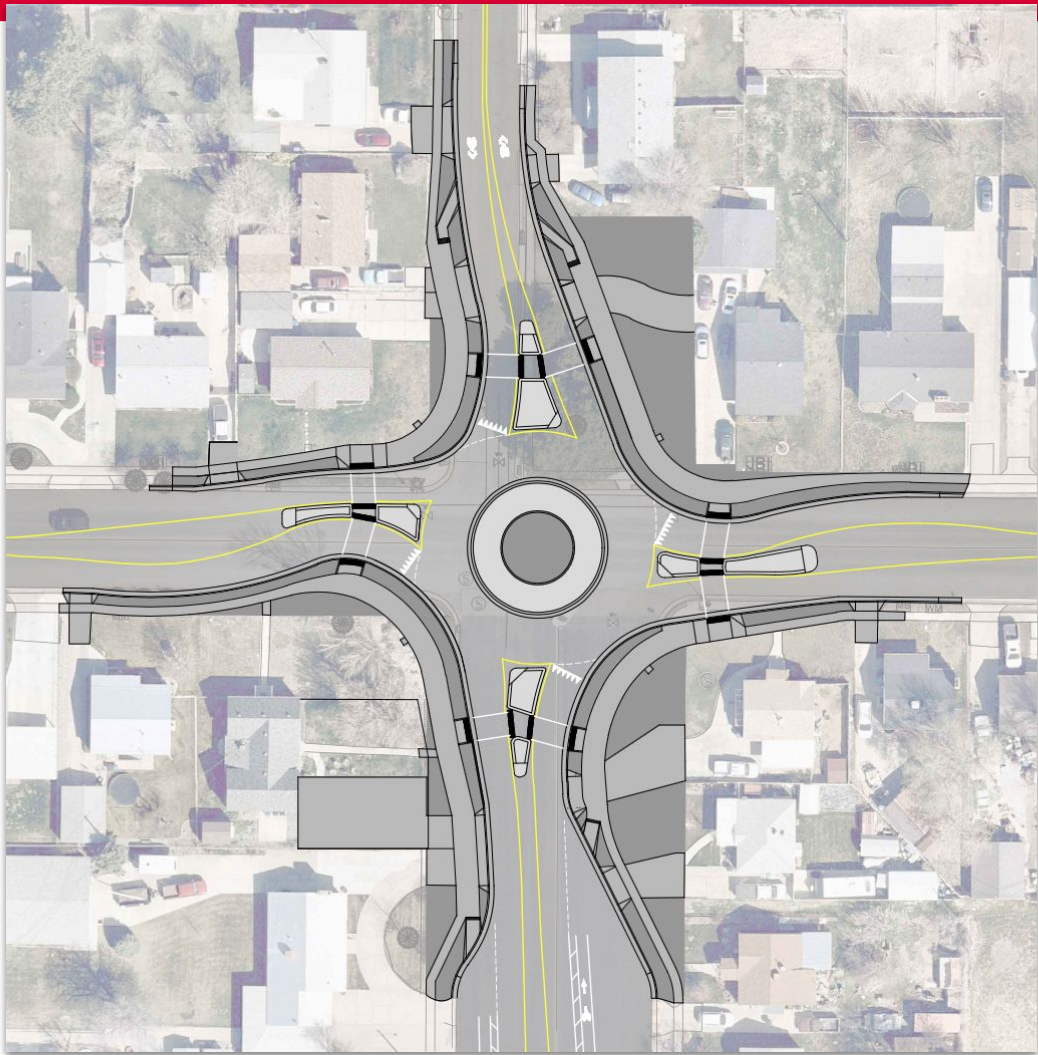
Safety

Video







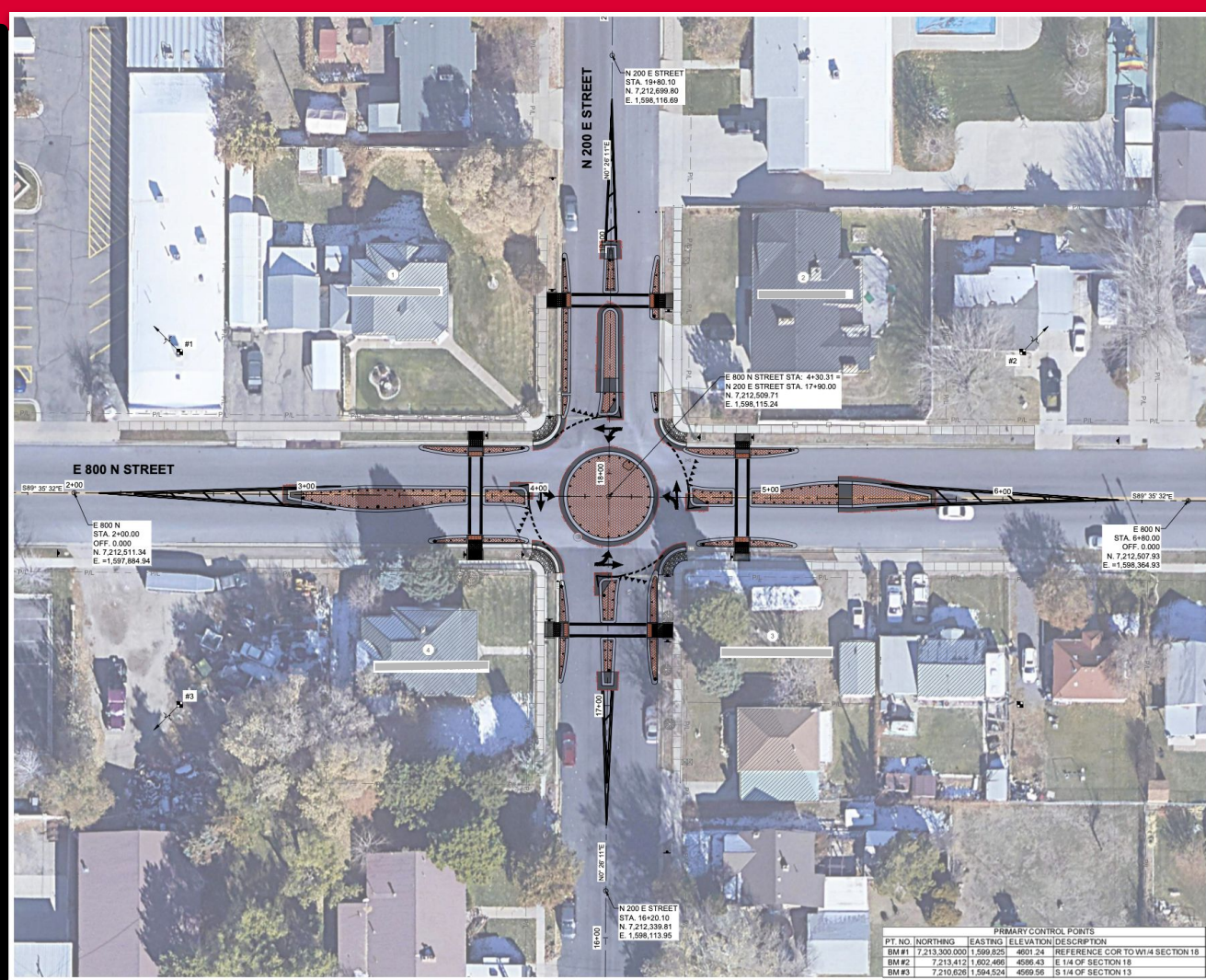


800 N 200 E Mini- Roundabout

Less Cost than a
Signal

No Additional
Right-of-Way

Mountable center
Island



U.S. Route 6

I-15 to US-89

 **IMPROVED**
by UDOT

March 5, 2024
Rotary Club Meeting
12 p.m.

KEEPING UTAH MOVING

WHAT'S HAPPENING? UDOT is improving US-6 by adding dual left turns at Expressway Lane and Canyon Creek Parkway, a third eastbound lane that extends from I-15 eastward through Expressway Lane signal upgrades, and relocating the trail along the south side of US-6. This project aims to improve traffic flow on a crucial route connecting the Wasatch Front to I-70, aligning with UDOT's commitment to keep Utah moving.



US-6 Timeline

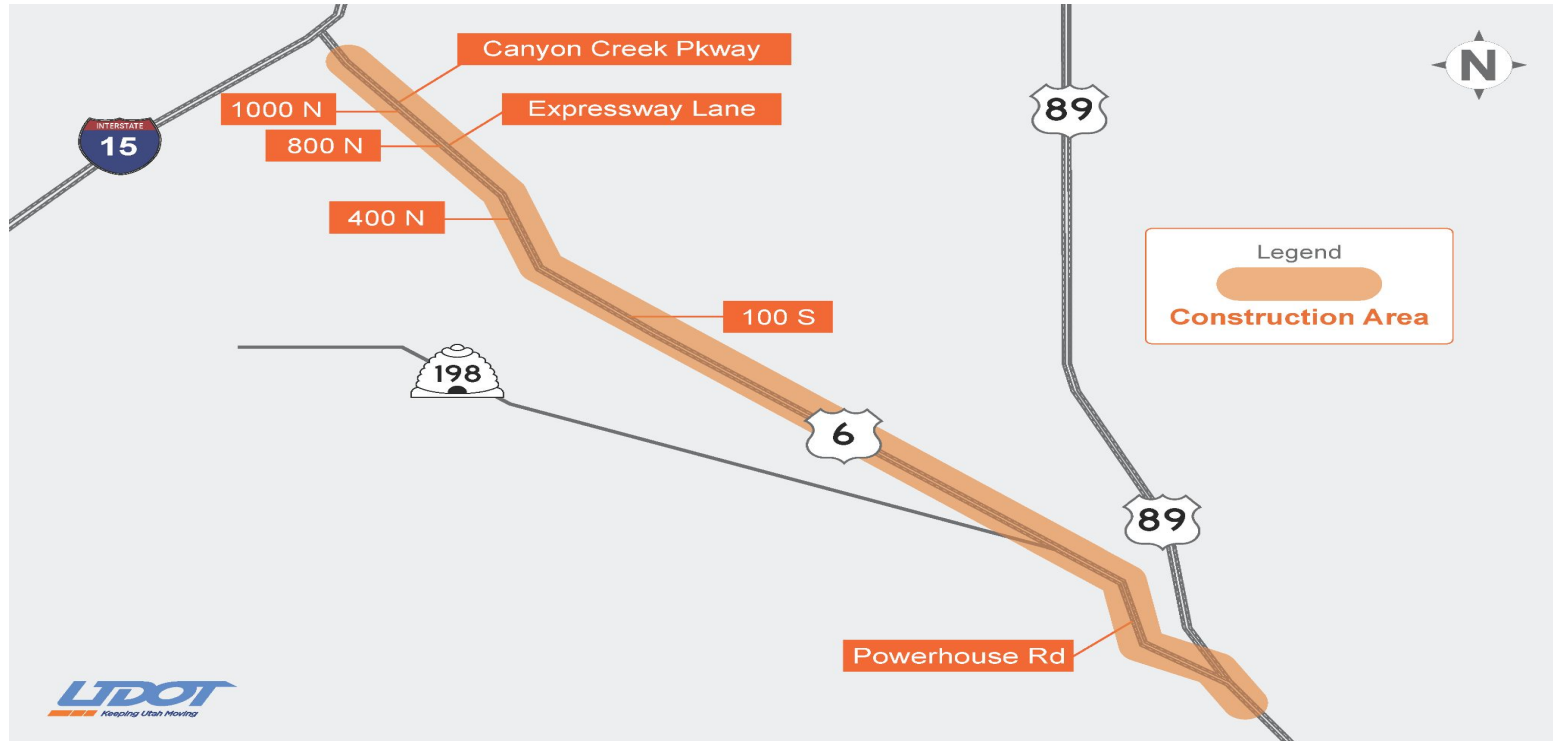
US-6 IMPROVED

Enhancements include:

- Implementing dual left turns at Expressway Lane and Canyon Creek Parkway.
- Adding a third eastbound lane, extending to the east of Expressway Lane.
- Installing new asphalt paving from I-15 to the mouth of Spanish Fork Canyon.
- Relocating the trail on the south side of US-6 to enhance safety, accessibility, and promote the use of various transportation modes.

These improvements are designed to enhance traffic flow, safety, and overall connectivity in the area.

US-6 IMPROVED



US-6 IMPROVED



US-6 IMPROVED

Schedule:

- Construction activities start as early as Wednesday, March 6.
- Majority of work during **nighttime hours to minimize congestion.**
- Nightly work **Sunday through Thursday nights.**
- Work hours: **7 p.m. to 6 a.m.**

Traffic Impacts:

- All traffic lanes will temporarily shift to the north side of US-6.
- Initial work focuses on widening the section on the south of the roadway between I-15 and Center Street.
- Business access will remain open.

SIGN-UP TO STAY INFORMED!



us6improved@utah.gov



800-292-3557



udotinput.utah.gov/us6improved

Main St

2026 Rebuild

600 N - 1000 N

- Avoid Orem State St Type
7 Lane Feel
- Limited Access
for Traffic Flow
- Beautification
- MAG Staff
Mid Rating

